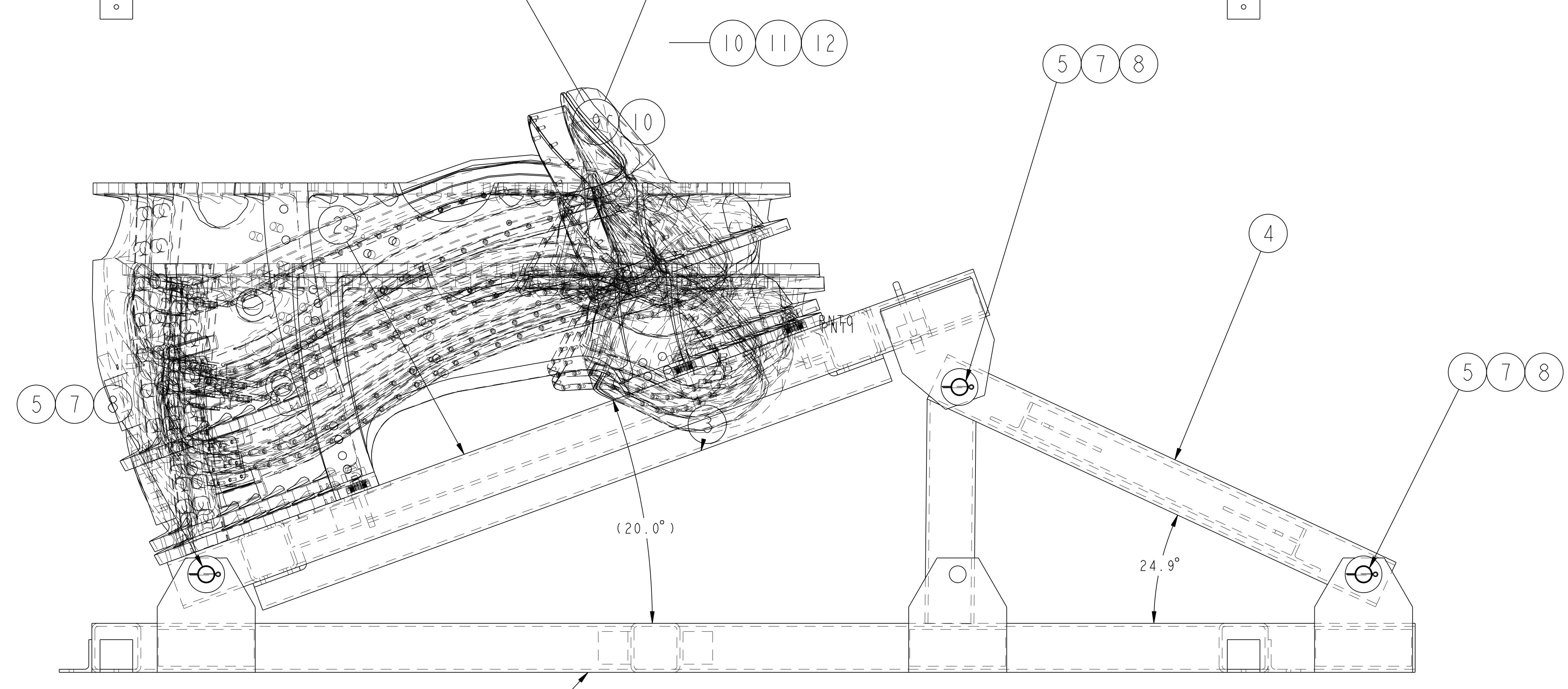


REFERENCE ISOMETRIC VIEW



01 ASSEMBLY - SHOWN AT 20° POSITION

8	12	COMM	1/2-13UNC-2B HEX NUT	C'STL - ZN PLT
8	11	COMM	1/2" SPLIT LOCK WASHER	C'STL - ZN PLT
16	10	COMM	1/2" FLAT WASHER	C'STL - ZN PLT
8	9	COMM	1/2-13UNC-2A x 7 1/2" LG HEX HD CAP SCR	C'STL - ZN PLT
12	8	COMM	COTTER PIN - Ø3/16 x 3" LG	C'STL - ZN PLT
12	7	COMM	2" FLAT WASHER	C'STL - ZN PLT
1	6	COMM	LIFTING EYE - RATED 15000#	
6	5	SE185-116-5	PIVOT PIN	SEE DWG
1	4	SE185-118-01	SUPPORT BRACE FRAME WELDMENT	SEE DWG
1	3	SE185-113-02	FRAME SUPPORT WELDMENT	SEE DWG
1	2	SE185-113-01	PIVOT FRAME WELDMENT	SEE DWG
1	1	SE185-112	BASE FRAME WELDMENT	SEE DWG
			THIS DWG	FRAME ASSEMBLY

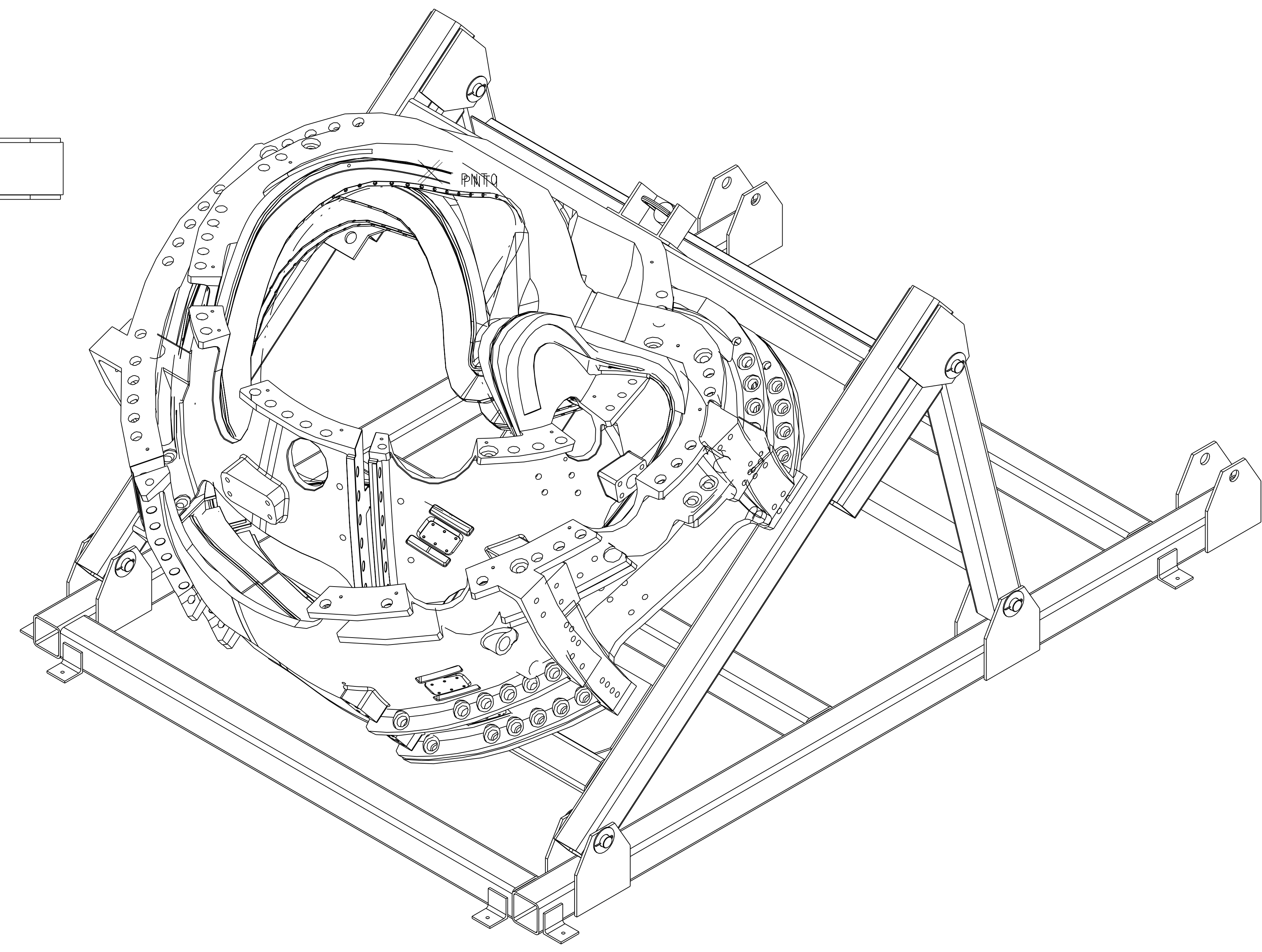
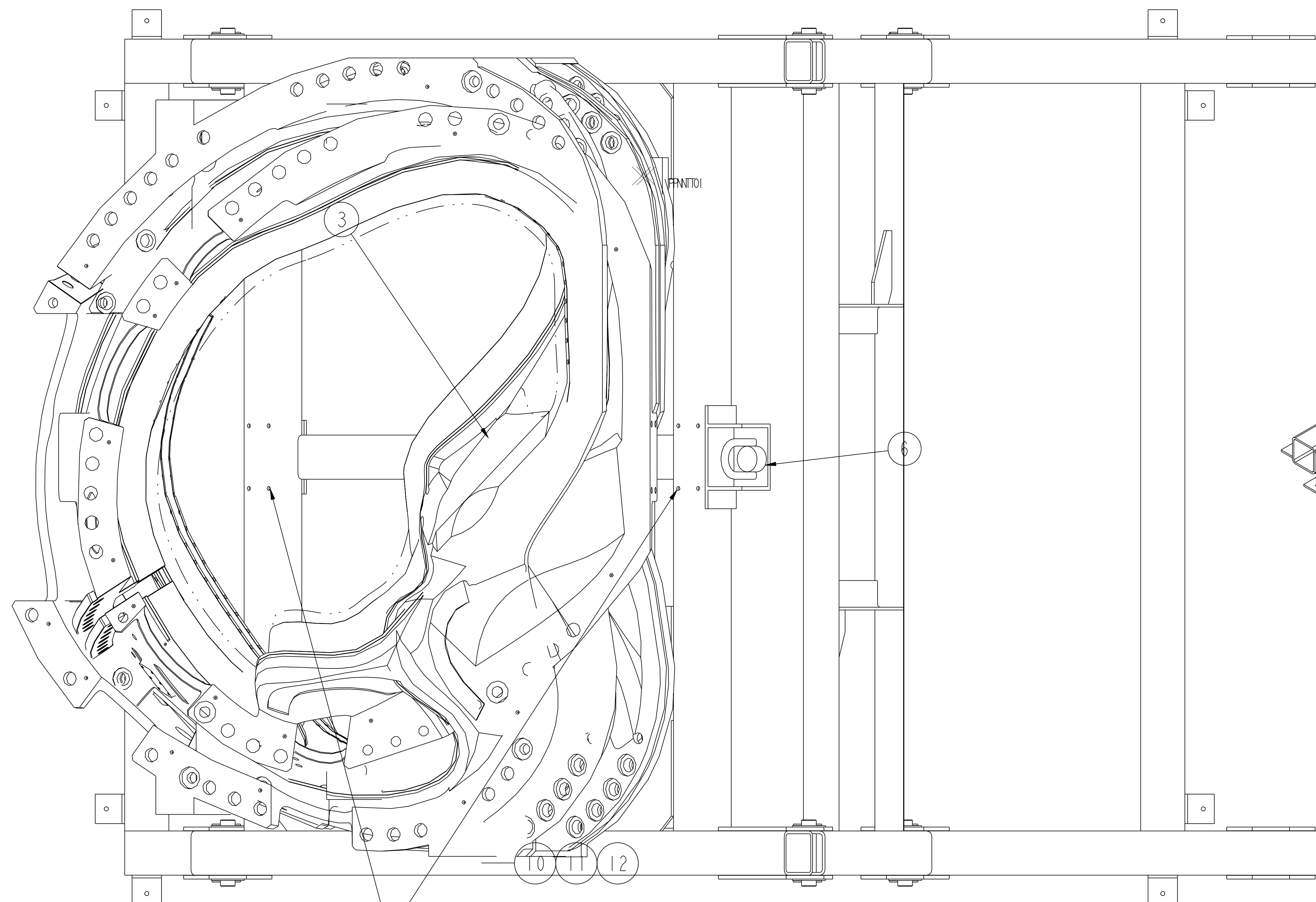
01	PART ASSY NO.	DRAWING NO.	NOMENCLATURE OR DESCRIPTION	MATERIAL	QTY REQD
----	---------------	-------------	-----------------------------	----------	----------

COMPUTER GENERATED DRAWING CHANGES NOT PERMITTED		CENTRAL FILES:	PRINCETON PLASMA PHYSICS LABORATORY	
Pro E		UNLESS OTHERWISE SPECIFIED	NATIONAL COMPACT STELLARATOR EXPERIMENT	
DO NOT VERIFY INFORMATION BY SCALING DRAWING		DIMENSIONS ARE IN INCHES MACHINE SURFACES	FIELD PERIOD ASSEMBLY MCWF ASSEMBLY FIXTURE FRAME ASSEMBLY	
NEXT ASSEMBLY		TOLERANCES NON-CUMULATIVE	DSN: L. MORRIS	DRAWING NO:
		DECIMAL - INCH FRACTIONS	CHK:	SE185-111
		.XX +/- .000	ENGR: T. BROWN	
		.XXX +/- .005	SUPV:	SHEET 1 OF 2
		ANGULAR +/- 0°-15'		REV 0

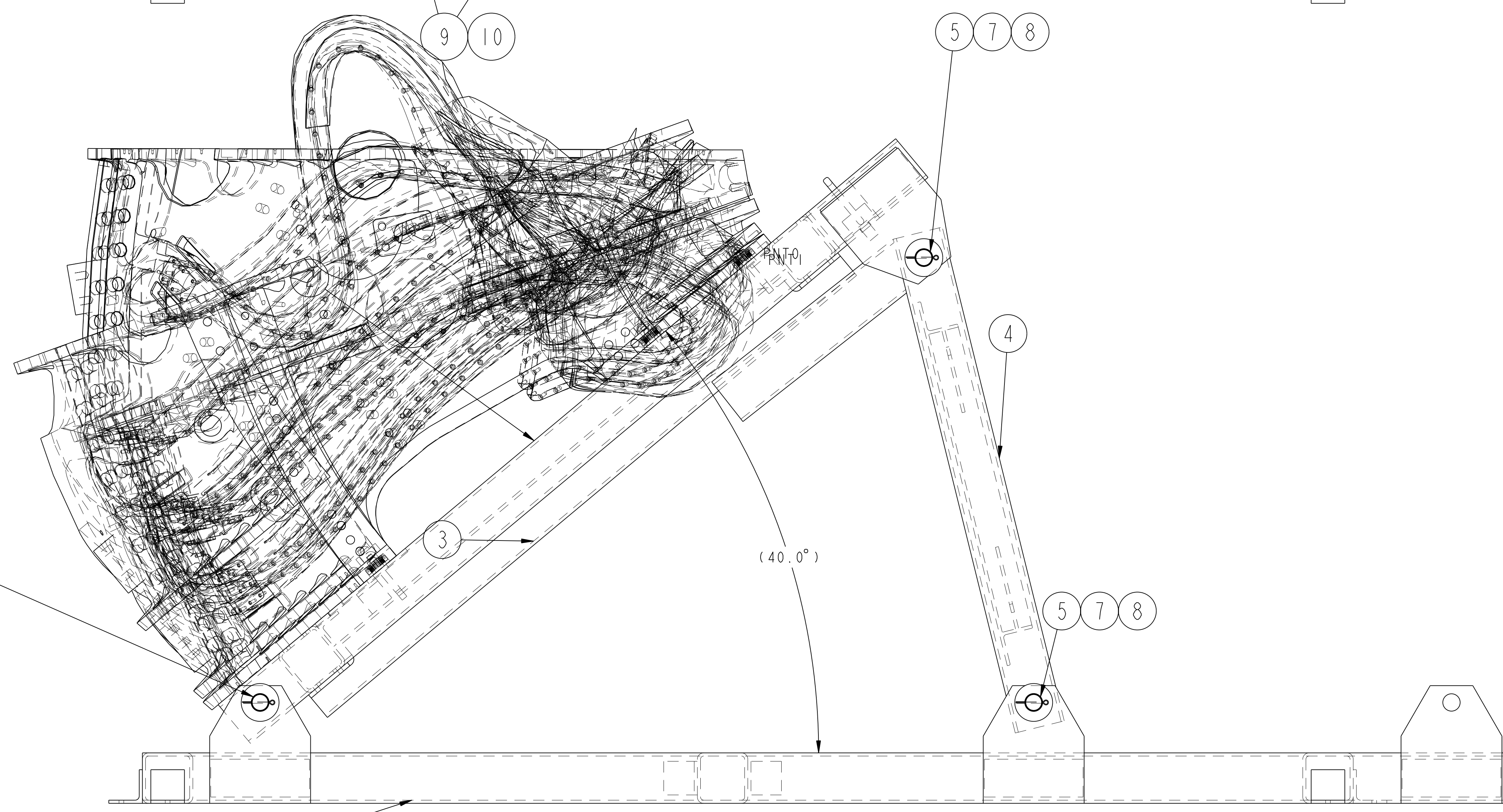
RELEASE LEVEL: WIP
DWG VERSION NO: 3

WEIGHT
32581.8 lbs
MODEL NAME
SE185-111-01
WELDING ENGINEER

NO.	REVISION	BY	CH	SUP	APPROVED	DATE



REFERENCE ISOMETRIC VIEW



01 ASSEMBLY - SHOWN AT 40° POSITION

FOR NOTES AND BILL OF MATERIAL SEE SHEET 1

RELEASE LEVEL: WIP
DWG VERSION NO: 9

WEIGHT	32581.8 lbs
MODEL NAME	SE185-111-01
WELDING ENGINEER	

COMPUTER GENERATED DRAWING MANUAL CHANGES NOT PERMITTED Pro E	CENTRAL FILES: UNLESS OTHERWISE SPECIFIED	PRINCETON PLASMA PHYSICS LABORATORY PRINCETON UNIVERSITY NATIONAL COMPACT STELLARATOR EXPERIMENT	
DO NOT VERIFY INFORMATION BY SCALING DRAWING	DIMENSIONS ARE IN INCHES MACHINE SURFACES BREAK SHARP EDGES .005/.020	FIELD PERIOD ASSEMBLY MCWF ASSEMBLY FIXTURE FRAME ASSEMBLY	
NEXT ASSEMBLY	TOLERANCES NON-CUMULATIVE DECIMAL-INCH FRACTIONS .X +/- .000 0°-120° +/- .010 .XX +/- .000 120°-120° +/- .010 .XXX +/- .005 120°-120° +/- .010 ANGULAR +/- 0°-15° OVER 120° +/- .172	DSN: L. MORRIS ENGR: T. BROWN SUPV:	DRAWING NO: SE185-111 SHEET 2 OF 2 REV 0.3

NCSX-SE185-111