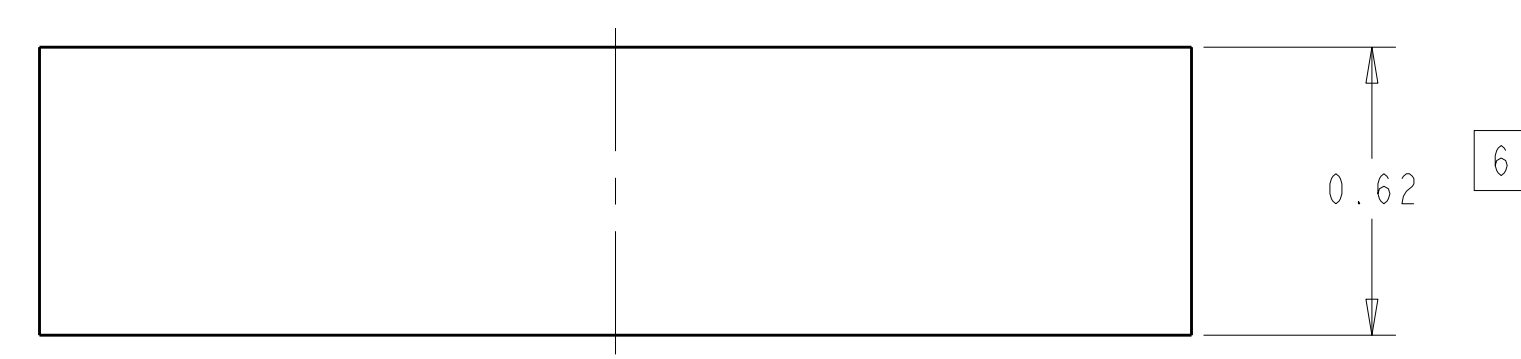
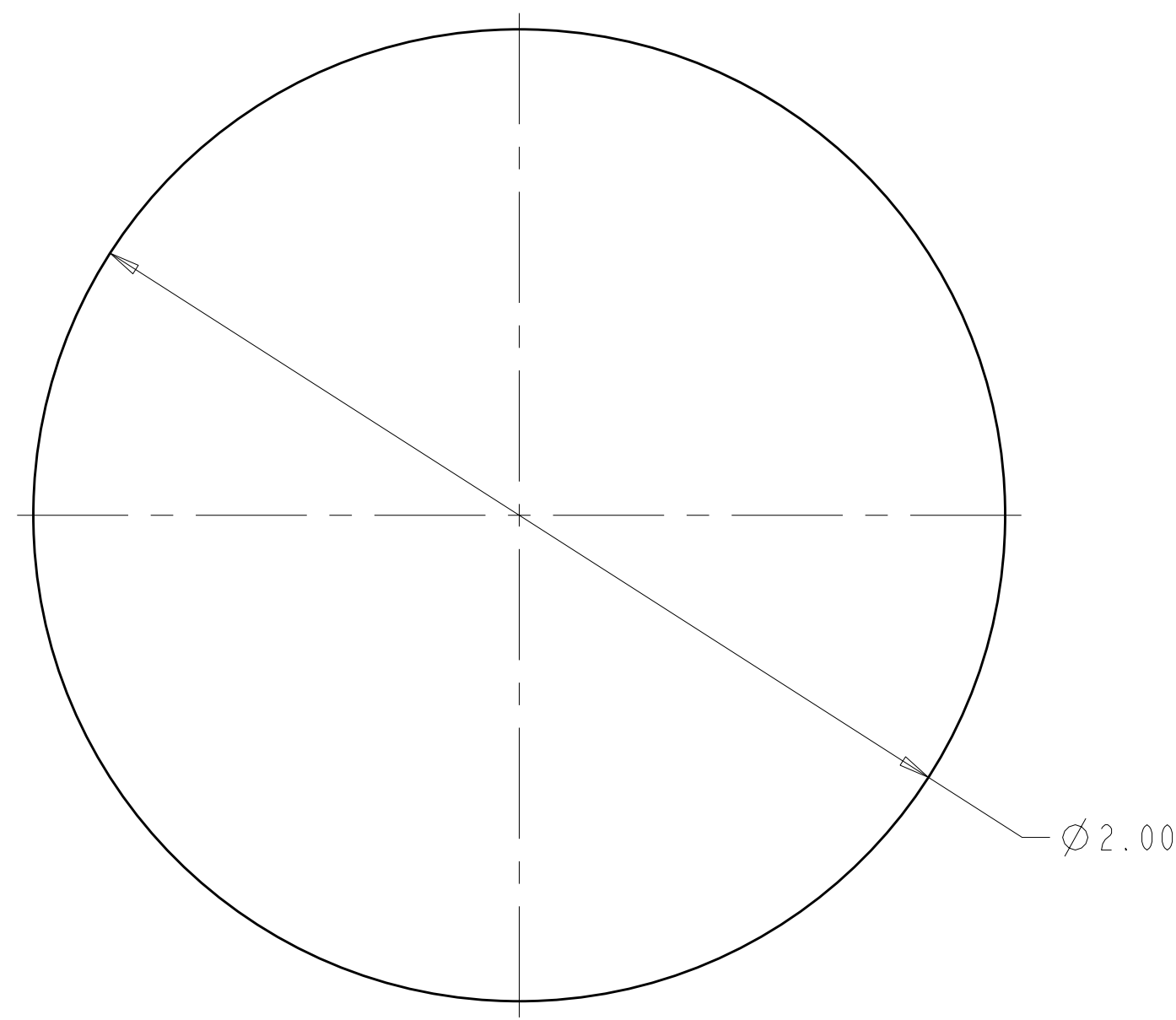
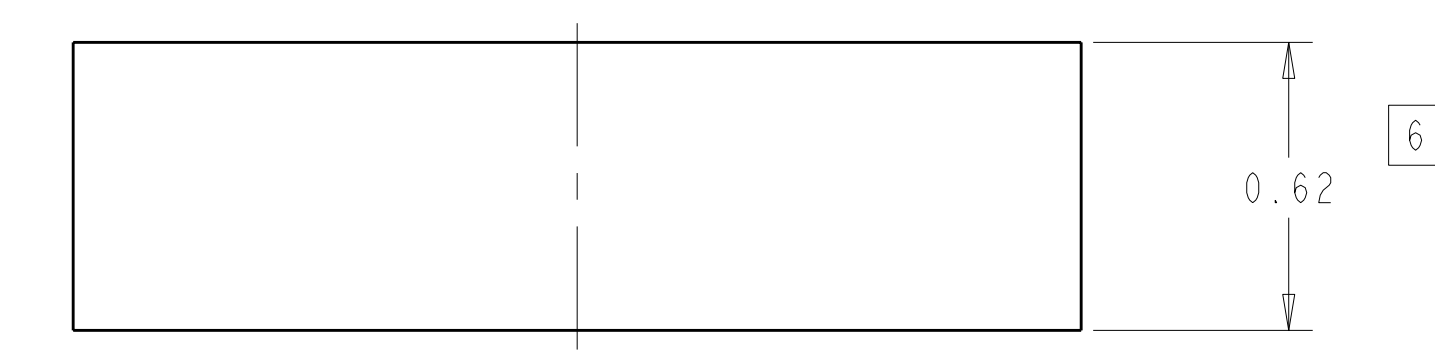
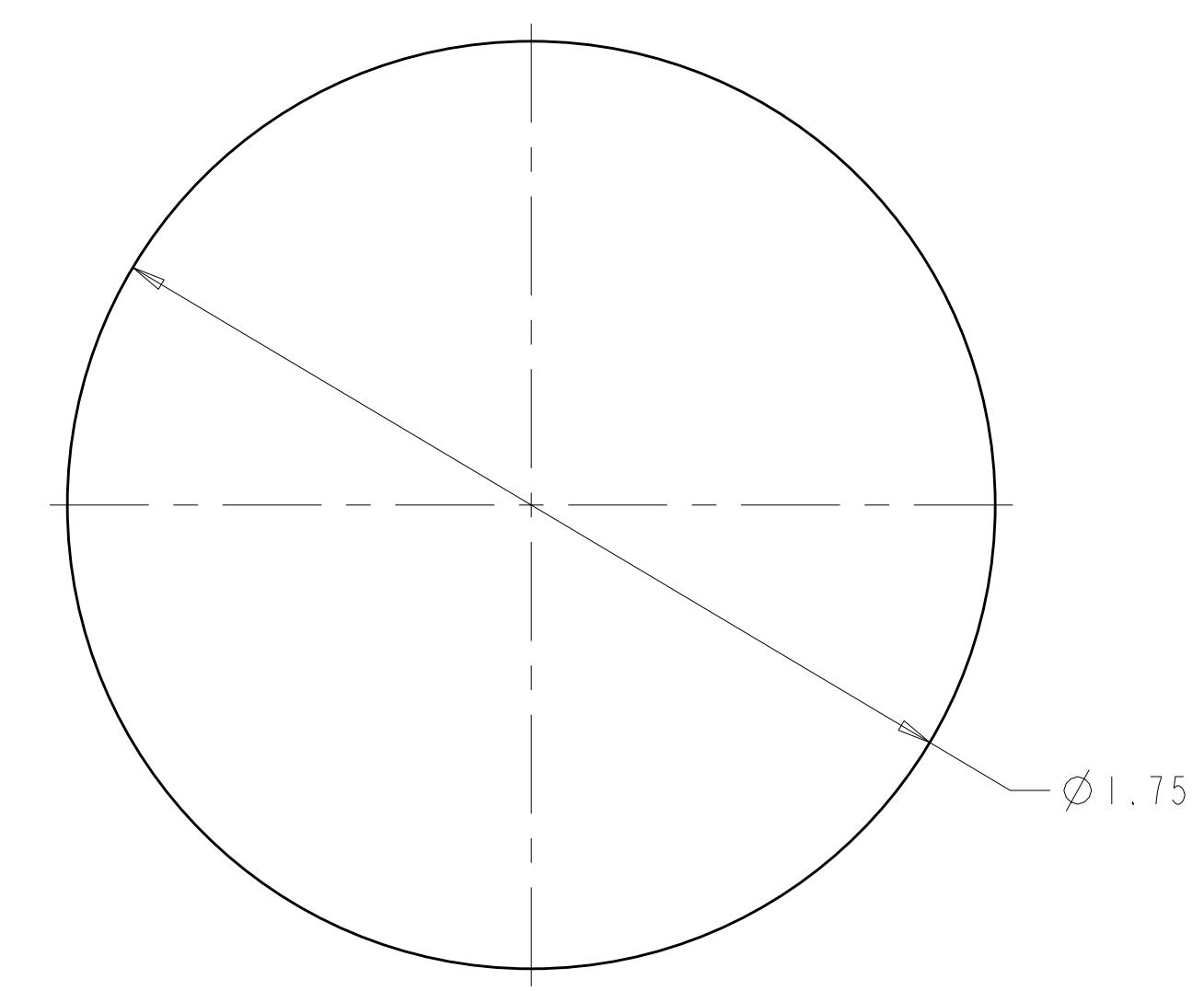


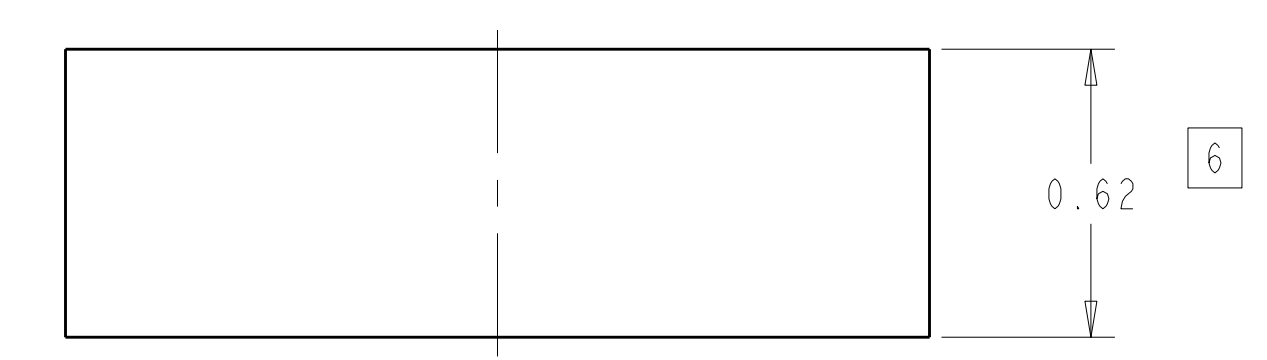
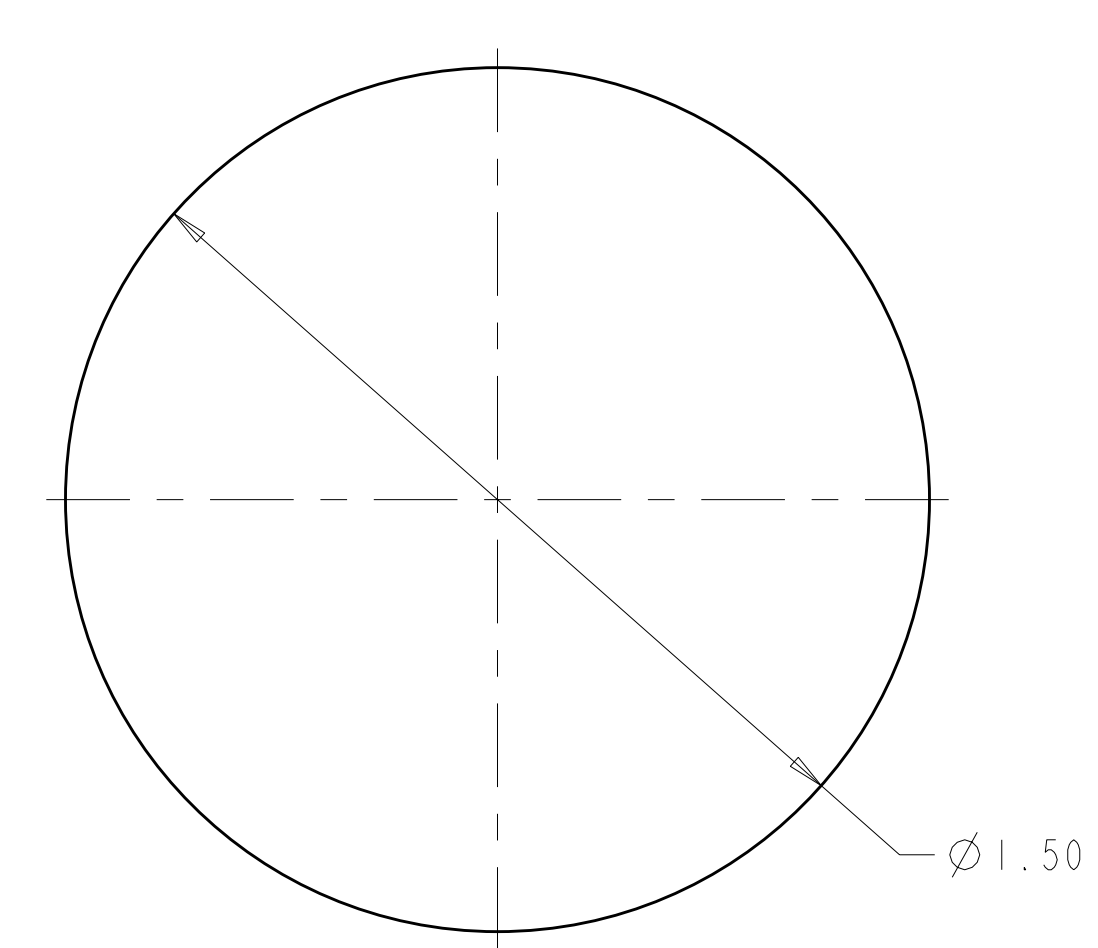
- NOTES
- DRAWING PREPARED IN ACCORDANCE WITH ASME Y14.100-2004.
 - INTERPRET DIMENSIONS AND TOLERANCES PER ASME Y14.5M-1994.
 - DIMENSIONS ARE IN INCHES
 - MAGNETIC PERMEABILITY NOT TO EXCEED 1.02 AS TESTED BY A SEVERN INDICATOR - AVAILABLE FROM:
SEVERN ENGINEERING
AUBURN, ALABAMA 36830
WWW.SEVERNENGINEERING.COM
 - SHIMS TO BE ANNEALED AFTER ALL CUTTING AND GRINDING IF PERMEABILITY SPEC IN NOTE 4 IS NOT MEET
 - GRIND THICKNESS AND MARK FOR LOCATION AS REQUIRED FOR FINAL INSTALLATION
 - OPTIONAL MATERIAL: UNS N06625 ASTM B446 ANNEALED



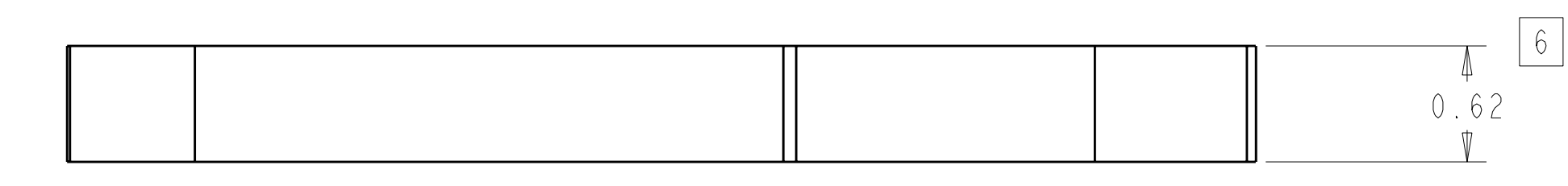
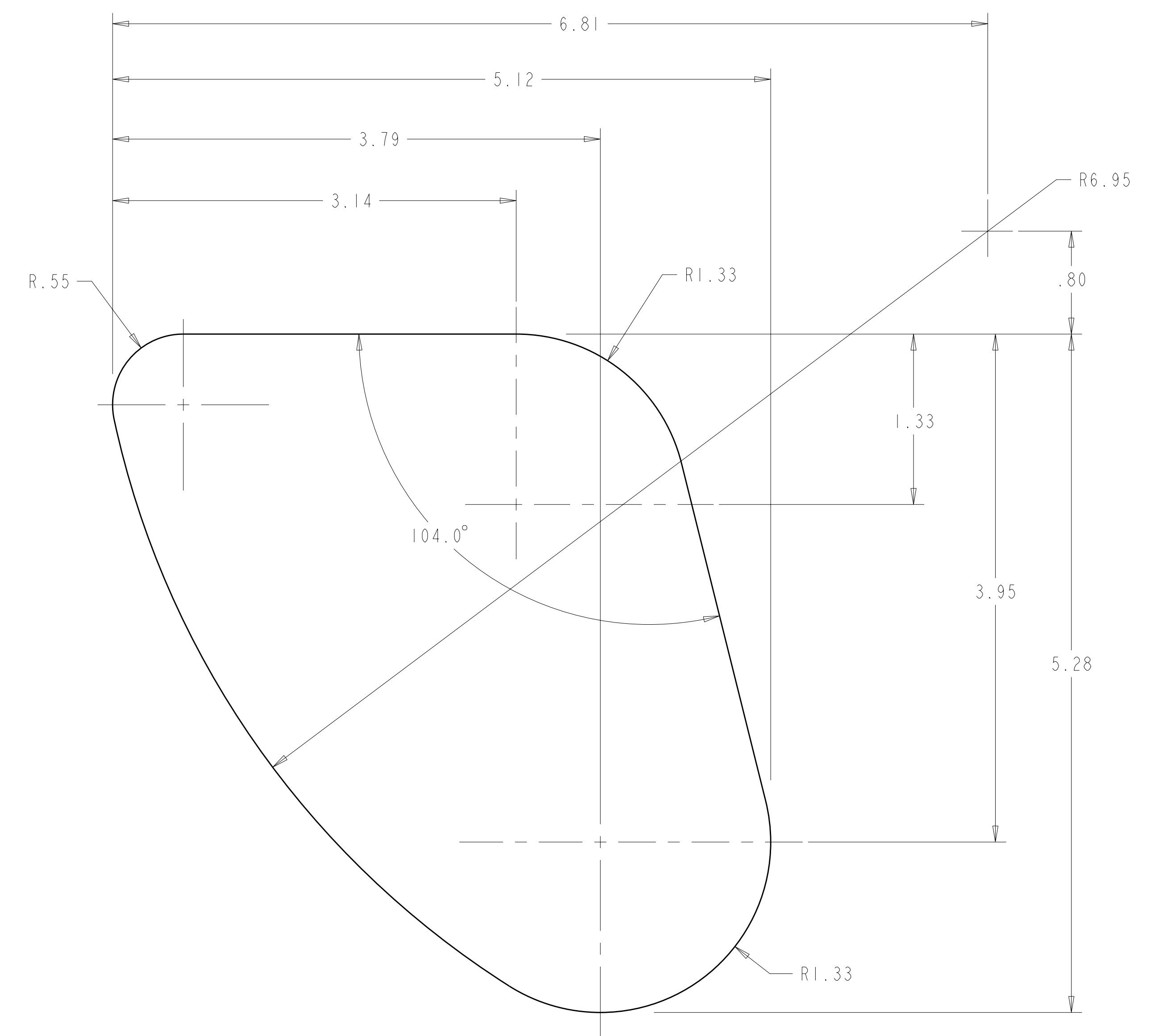
-1 - SHIM PUCK - 2.00"
SCALE 3.00



-2 - SHIM PUCK - 1.75"
SCALE 3.00



-4 - SHIM PUCK - 1.50"
SCALE 3.00



-3 - SHIM PUCK - AA
SCALE 1.50

REV	DATE	DESCRIPTION	BY	CHK	DEPT	PE	REQ	DATE	ORNL	DOE	DATE
0		ORIGINAL ISSUE	SH	01/08	MC			01/08			
REVISION OR ISSUE PURPOSE											
REVISION APPROVAL											

CAGE CODE	PART OR IDENTIFYING NO	NOMENCLATURE OR DESCRIPTION	MATERIAL	SPECIFICATION	FIND NO
SE140-056-4	SHIM PUCK - 1.50"		S31603 ANNEALED	ASTM A276	4
SE140-056-3	SHIM PUCK - AA		UNS N06625	ASTM B443	3
SE140-056-2	SHIM PUCK - 1.75"		S31603 ANNEALED	ASTM A276	2
SE140-056-1	SHIM PUCK - 2.00"				1

← NEXT ASSEMBLY

PARTS LIST

NO REPRESENTATION OR WARRANTY, EXPRESSED OR IMPLIED, IS MADE AS TO THE ACCURACY, COMPLETENESS OR USEFULNESS OF THE INFORMATION OR STATEMENTS CONTAINED IN THESE DRAWINGS, OR THAT THE USE OR DISCLOSURE OF ANY INFORMATION, APPARATUS, METHOD OR PROCESS DISCLOSED IN THESE DRAWINGS MAY NOT INFRINGE PRIVATE RIGHTS OF OTHERS. NO LIABILITY IS ASSUMED WITH RESPECT TO THE USE OF, OR FOR DAMAGES RESULTING FROM THE USE OF, ANY INFORMATION, APPARATUS, METHOD OR PROCESS DISCLOSED IN THESE DRAWINGS. DRAWINGS MADE AVAILABLE FOR INFORMATION TO BIDDER ARE NOT TO BE USED FOR OTHER PURPOSES, AND ARE TO BE RETURNED UPON REQUEST OF THE FORWARDING CONTRACTOR.

P THIS DRAWING PRODUCED ON PRO-ENGINEER

SCALE NOTED
TOLERANCES UNLESS OTHERWISE SPECIFIED
FRACTIONS ±.01
XX DECIMALS ±.01
XXX DECIMALS ±.005
ANGLES ±0'15"
BREAK SHARP EDGES OR MAX
FINISH ±.025 UNLESS OTHERWISE SPECIFIED

DESIGNED BY: D WILLIAMSON 01/2008
DRAWN BY: S HOMESCU 01/2008
CHECKED BY: M COLE 01/2008
SECT: :
DEPT: :
PE: :
CR: :
PJ: :
RD: :
PPPL DRFT J SIEGEL 01/2008
VERSION NO. 10+
PLANT ORNL
BLDG 5700
FL 3
SHT 1
OF 1
TYPE S
CLASS U
RELEASE LEVEL WIP
SE140-056
REV 0

Oak Ridge National Laboratory managed for the DEPARTMENT OF ENERGY under U.S. GOVERNMENT contract DE-AC05-00OR22725 UT-BATTELLE, LLC. Oak Ridge, Tennessee
PROJECT NAME: NATIONAL COMPACT STELLARATOR EXPERIMENT
SHIM PUCK