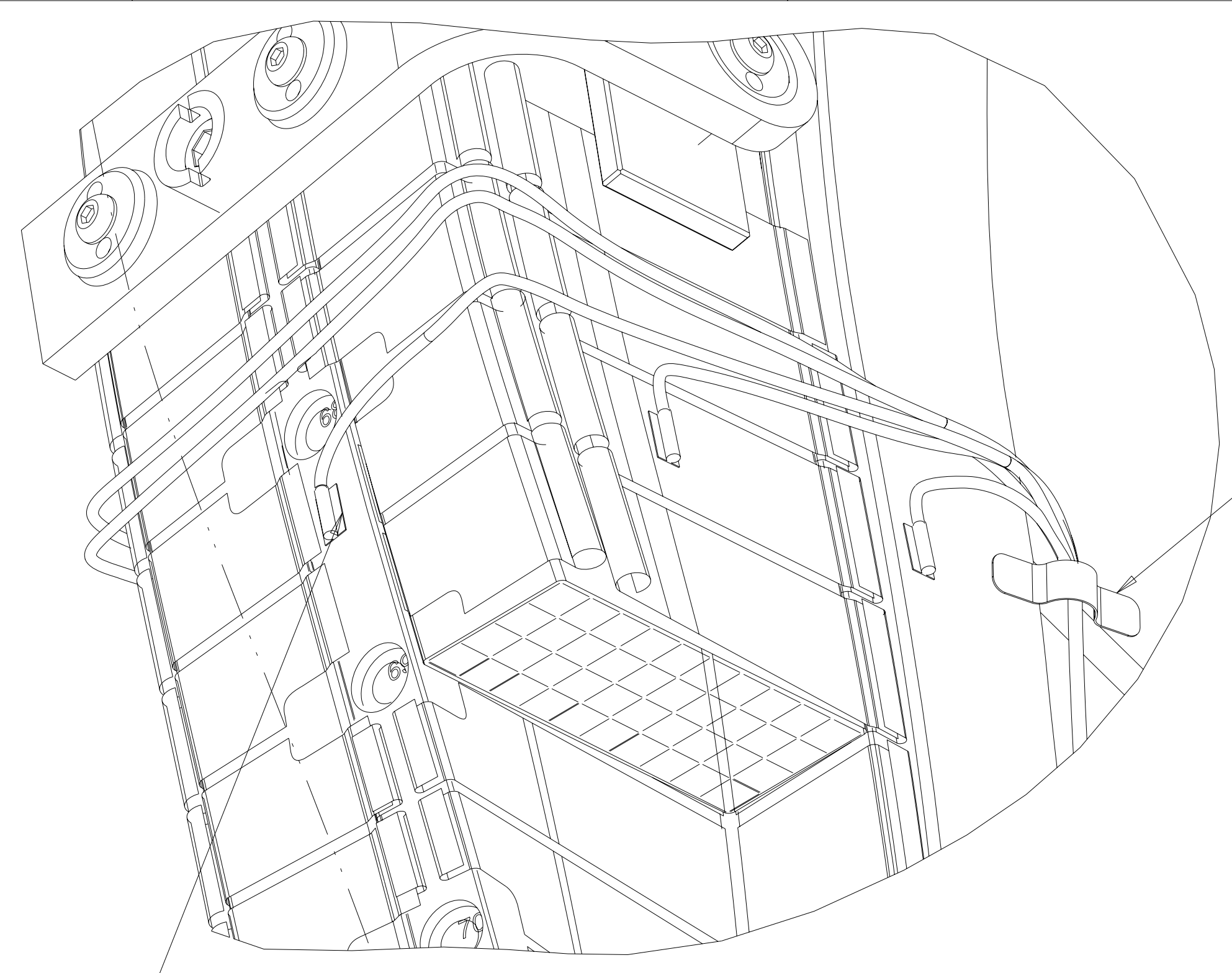


CUT-AWAY VIEW SHOWING WINDING ASSEMBLY SEQUENCE (SIDE "B")

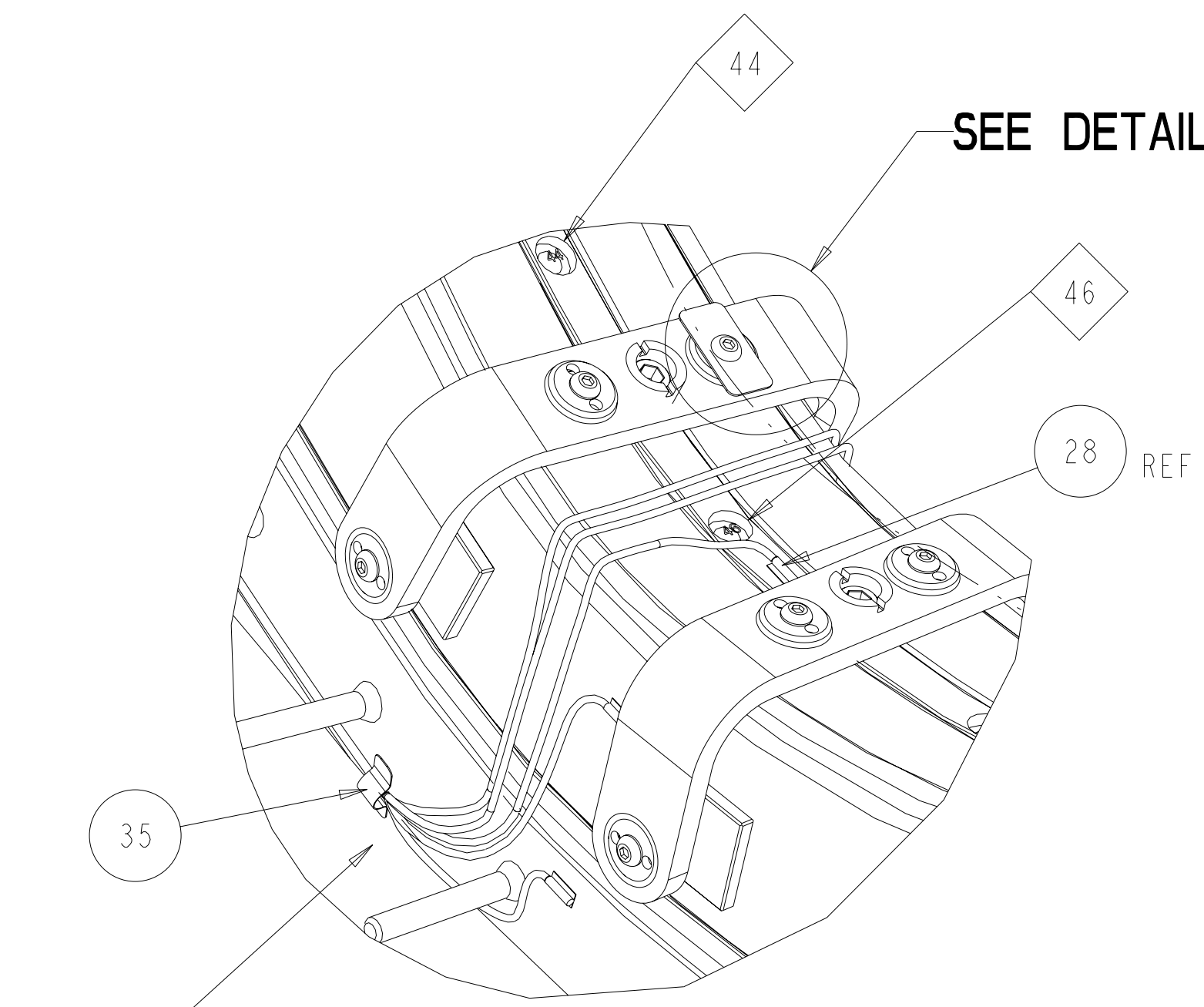
SCALE 0.50



DETAIL B
SCALE 1.00

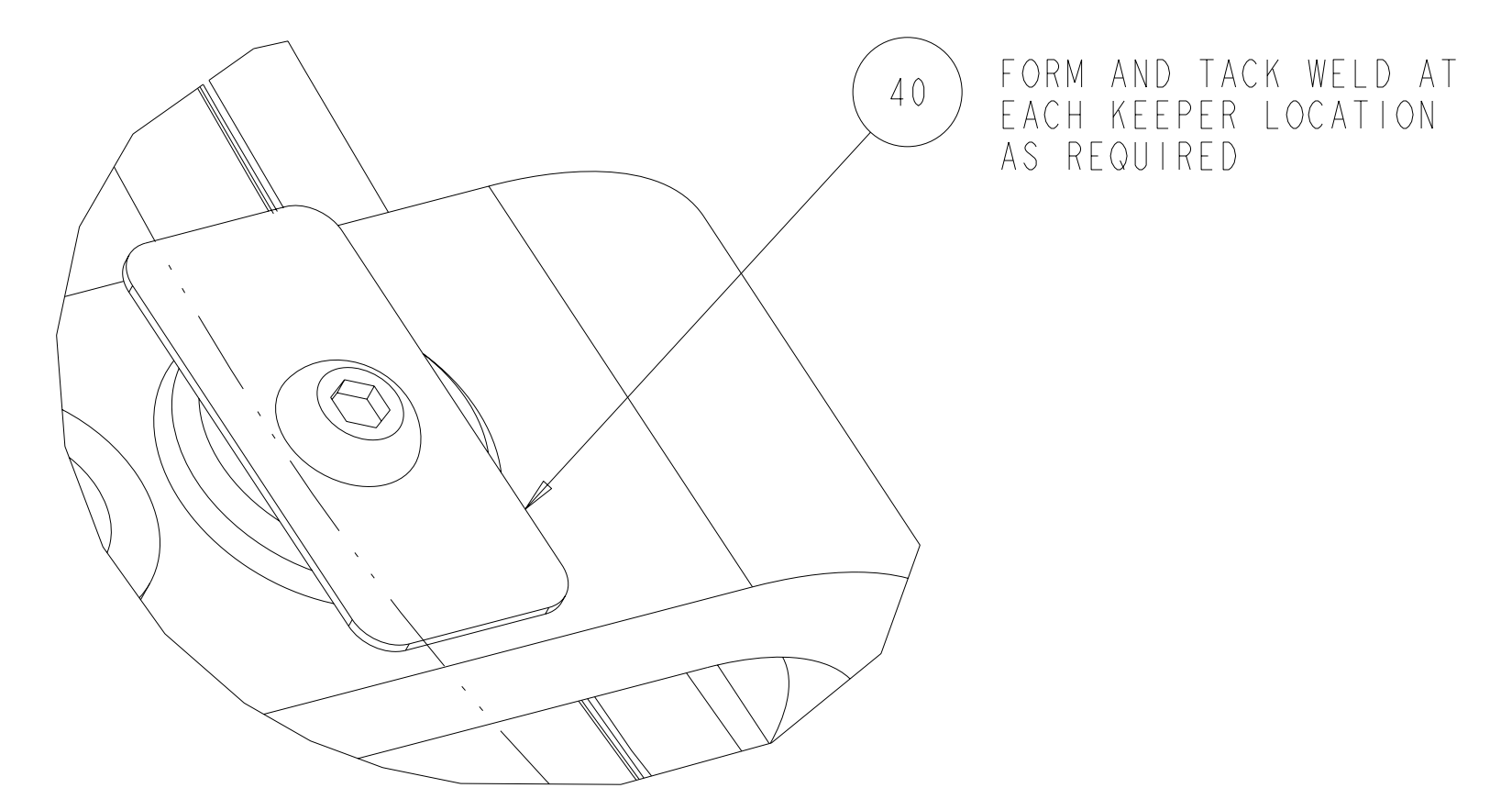
ON LAST FIELD PERIOD ASSEMBLY:
LOCATE STRAIN SENSORS AND LABEL AS SHOWN
1 EACH ON TOP OF TEE (ie 68-T-TOP)
2 EACH ON SIDE CHILL PLATE
ie (SIDE A) 68-C-A AND (SIDE B) 68-C-B
2 EACH ALONG FORM BELOW VPI GROOVE
ie (SIDE A) 68-V-A AND (SIDE B) 68-V-B

ON LAST FIELD PERIOD ASSEMBLY:
COLOR CODE OR IDENTIFY EACH CABLE WITH
HOLE NUMBER ASSOCIATED AND LOCATION
BUNDLE FIBER OPTIC STRAIN SENSOR CABLE
EXIT COIL WITH COOLING TUBES.



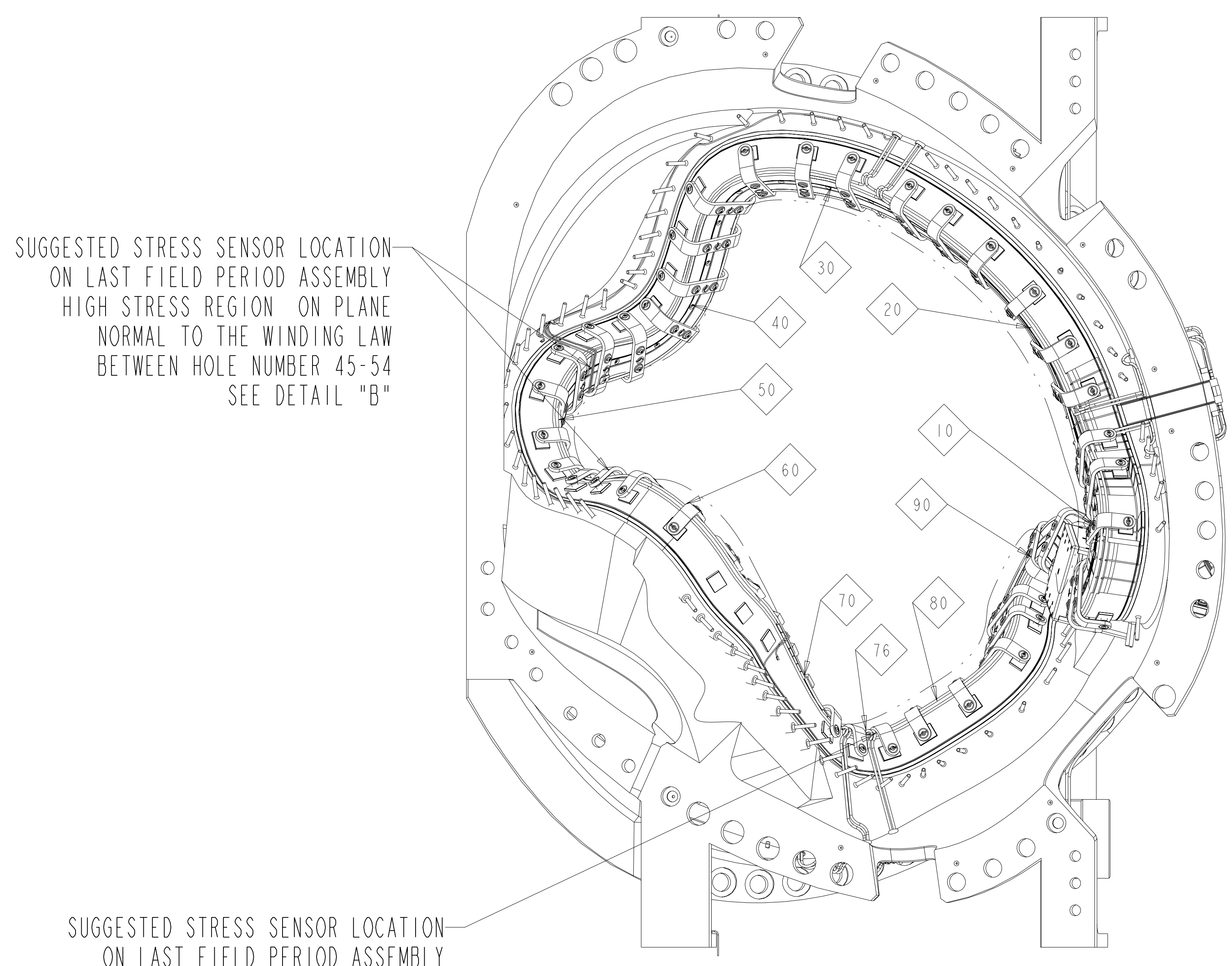
VIEW OF WINDING FORM AT HOLE 46
SCALE .50

LOCATE STRAIN SENSORS AND LABEL AS SHOWN
ON LAST FIELD PERIOD ASSEMBLY
1 EACH ON TOP OF TEE (ie 46-T-TOP)
2 EACH ON SIDE CHILL PLATE
ie (SIDE A) 46-C-A AND (SIDE B) 46-C-B
2 EACH ALONG FORM BELOW VPI GROOVE
ie (SIDE A) 46-V-A AND (SIDE B) 46-V-B



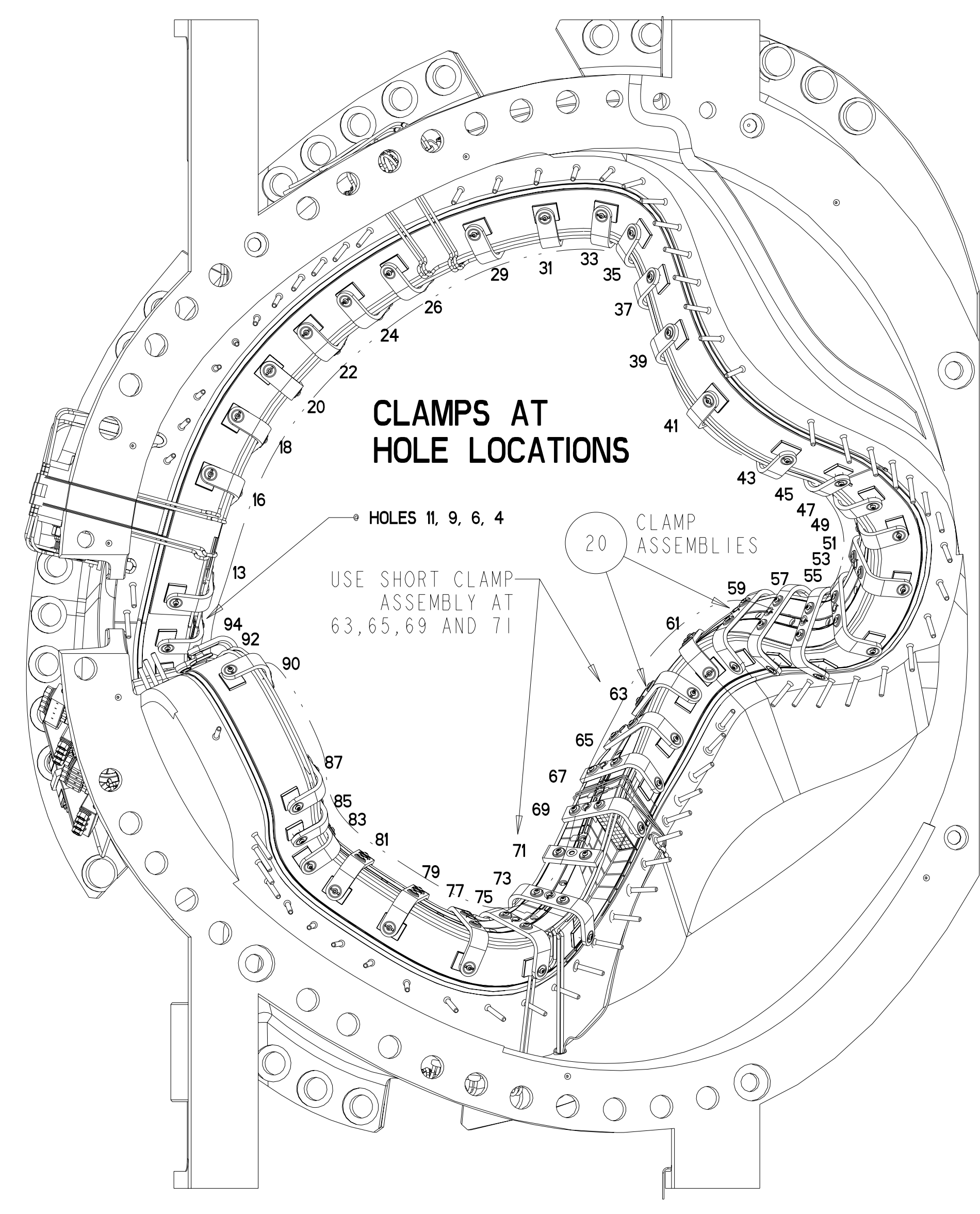
DETAIL C
SCALE 2.00

CLAMP CHART		
NO.	HOLE NO.	CLAMP ASSEMBLY
1	04	SE142C-270
2	06	SE142C-270
3	09	SE142C-270
4	11	SE142C-270
5	13	SE142C-270
6	16	SE142C-270
7	18	SE142C-270
8	20	SE142C-270
9	22	SE142C-270
10	24	SE142C-270
11	26	SE142C-270
12	29	SE142C-270
13	31	SE142C-270
14	33	SE142C-270
15	35	SE142C-270
16	37	SE142C-270
17	39	SE142C-270
18	41	SE142C-270
19	43	SE142C-270
20	45	SE142C-270
21	47	SE142C-270
22	49	SE142C-270
23	51	SE142C-270
24	53	SE142C-270
25	55	SE142C-270
26	57	SE142C-270
27	59	SE142C-270
28	61	SE142C-270
29	63	SE142C-303
30	65	SE142C-303
31	67	SE142C-270
32	69	SE142C-303
33	71	SE142C-308
34	73	SE142C-270
35	75	SE142C-270
36	77	SE142C-270
37	79	SE142C-270
38	81	SE142C-270
39	83	SE142C-270
40	85	SE142C-270
41	87	SE142C-270
42	90	SE142C-270
43	92	SE142C-270
44	94	SE142C-270



SIDE "A" VIEW
SCALE .125

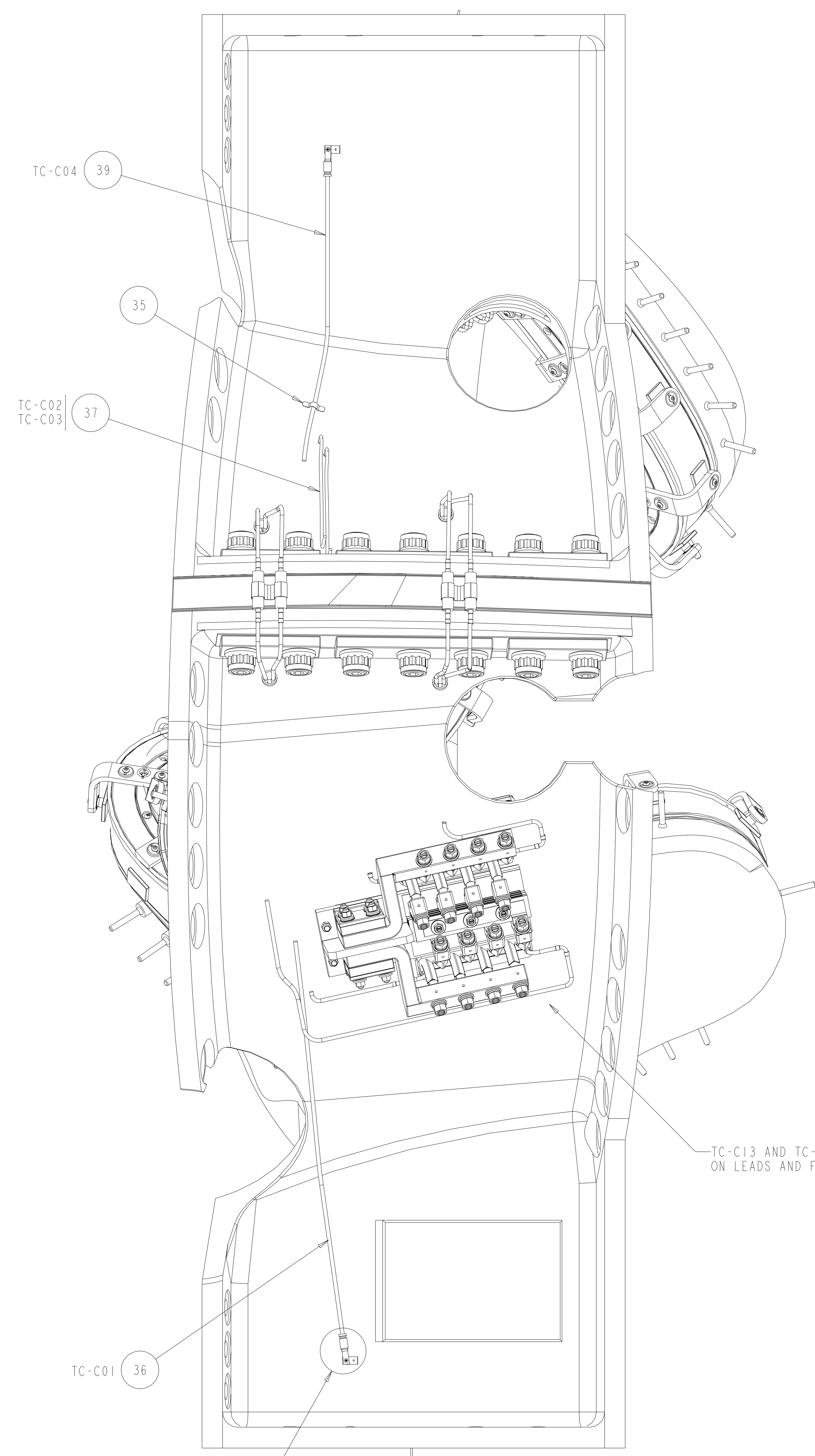
SUGGESTED STRESS SENSOR LOCATION
ON LAST FIELD PERIOD ASSEMBLY
HIGH STRESS REGION ON PLANE
NORMAL TO THE WINDING LAW
BETWEEN HOLE NUMBER 67-76
SEE DETAIL "B"



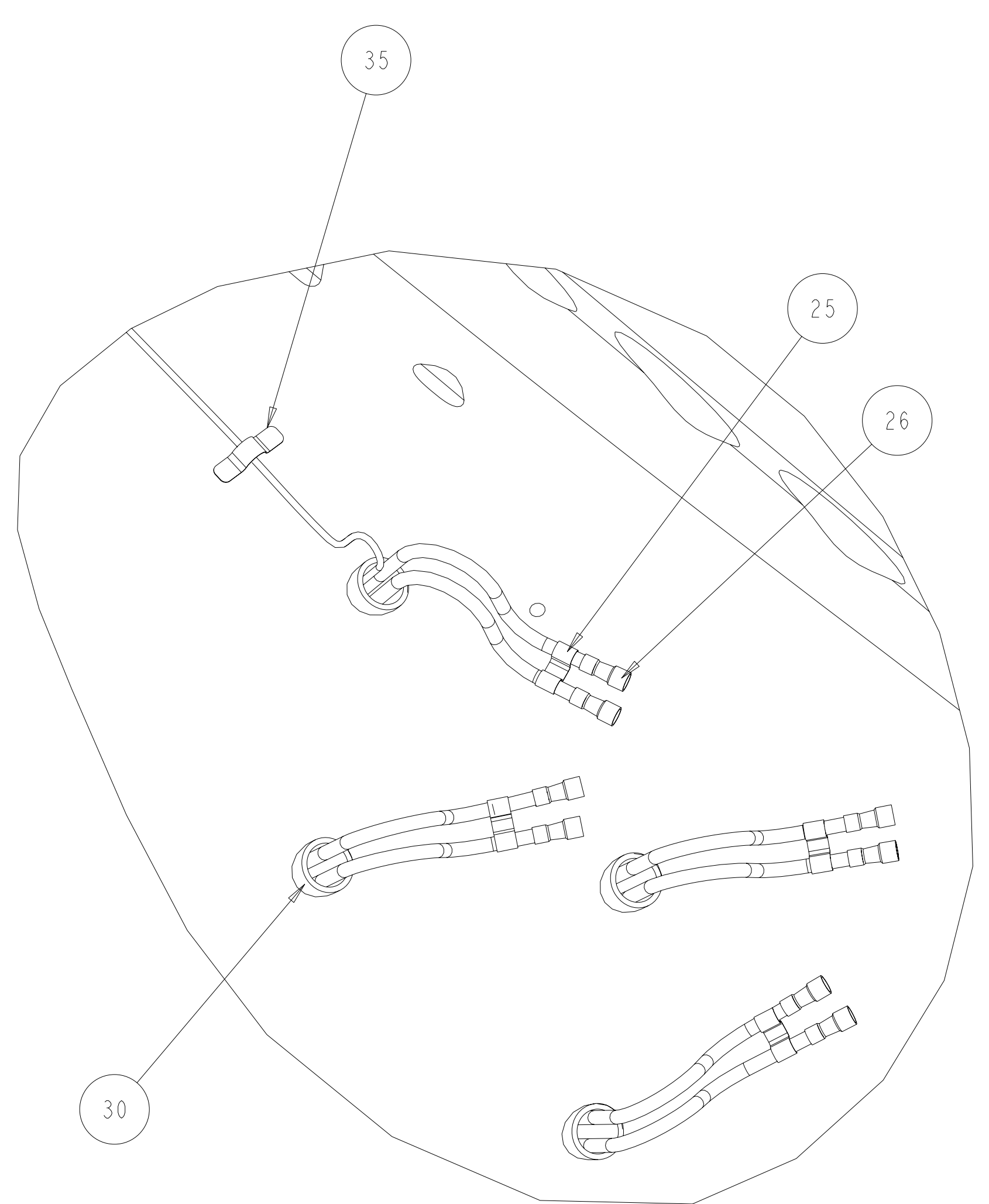
SIDE "B" VIEW
SCALE .125

Oak Ridge National Laboratory
managed for the DEPARTMENT OF ENERGY under
U.S. GOVERNMENT CONTRACT DE-AC05-00OR22725
UT-BATTELLE, LLC, Oak Ridge, Tennessee
PROJECT NAME
NATIONAL COMPACT STELLARATOR EXPERIMENT
TYPE C MCWF
FINAL COIL ASSEMBLY

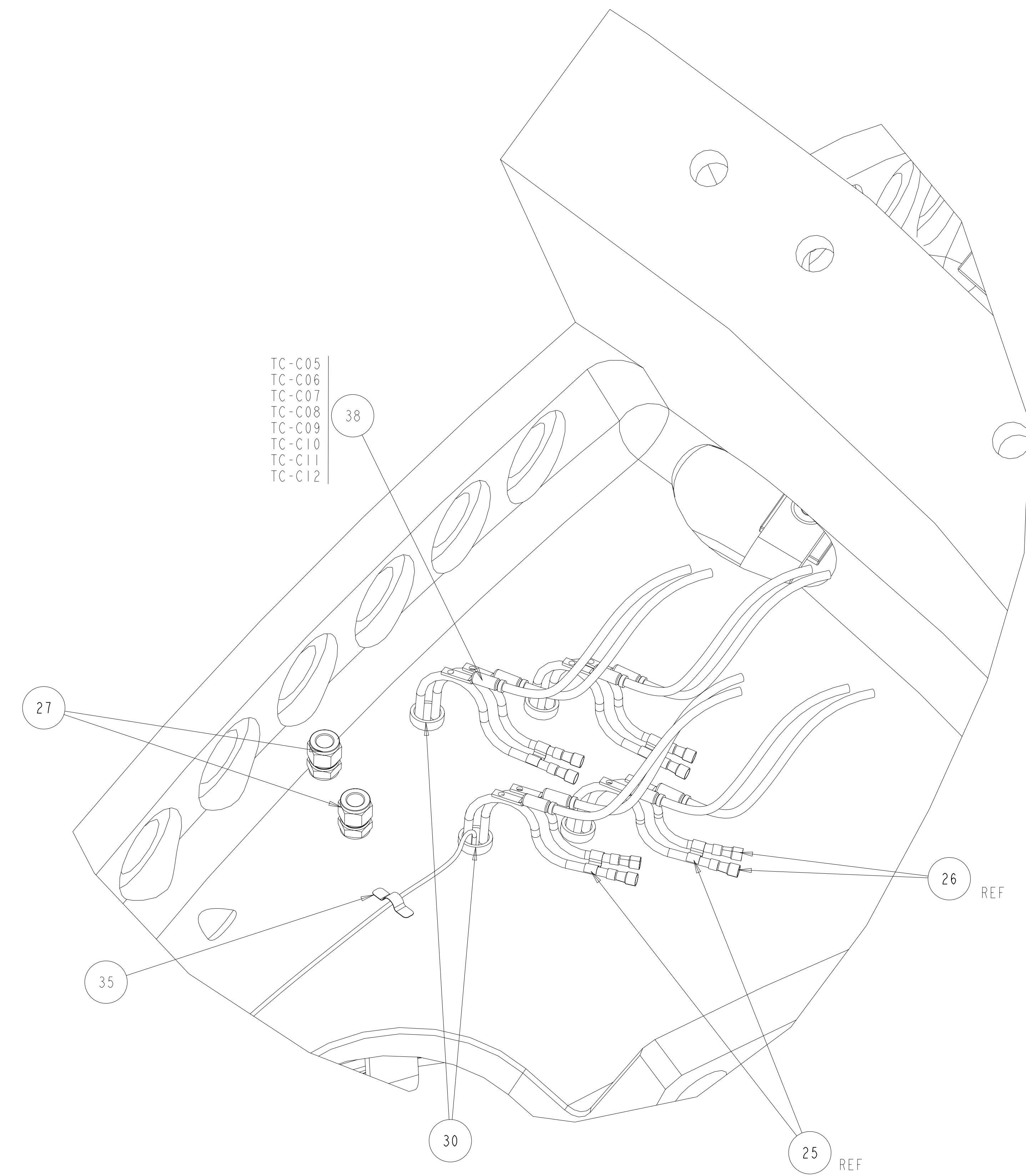
VERSION NO.	PLANT	BLDG	FL	SHT	OF	TYPE	CLASS
46	ORNL	5700	3	2	3	S	U
RELEASE LEVEL		SE140-103		WIP		REV 0	



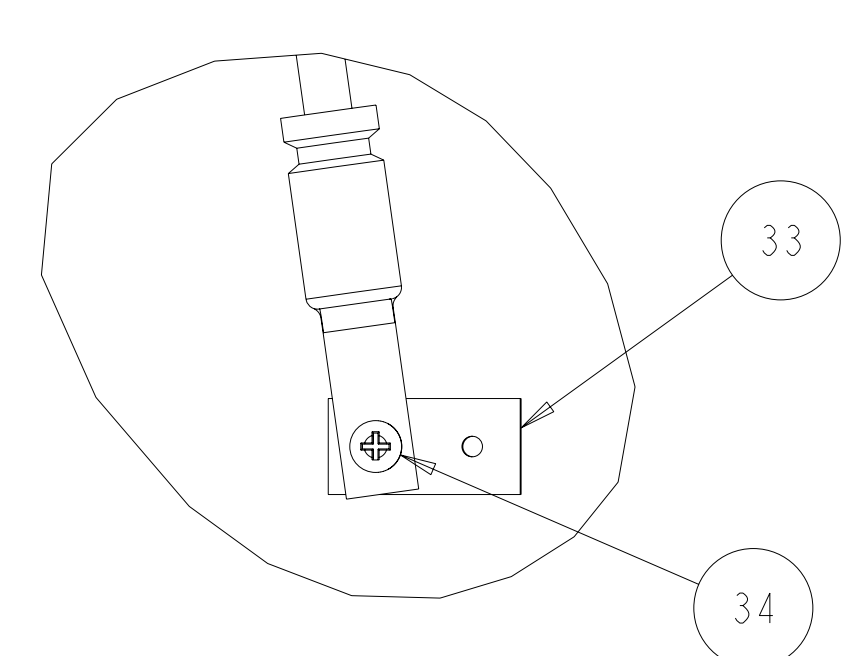
SEE DETAIL D SCALE 0.25



PARTIAL BOTTOM VIEW SCALE 0.50



PARTIAL TOP VIEW SCALE 0.50



DETAIL D TYP 2 PLACES SCALE 1.00

THERMOCOUPLE CHART			
NO.	LABEL	LOCATION	LEAD LENGTH TO BUNDLE AT "A" COIL (IN)
1	TC-C01	OUTBOARD LOWER SUPPORT	182
2	TC-C02	OUTBOARD T/C HOLE	144
3	TC-C03	OUTBOARD T/C HOLE (DUPLICATE)	144
4	TC-C04	OUTBOARD UPPER SUPPORT	164
5	TC-C05	COOLING LINE OUTLET 1	174
6	TC-C06	COOLING LINE OUTLET 2	174
7	TC-C07	COOLING LINE OUTLET 3	174
8	TC-C08	COOLING LINE OUTLET 4	174
9	TC-C09	COOLING LINE OUTLET 5	174
10	TC-C10	COOLING LINE OUTLET 6	174
11	TC-C11	COOLING LINE OUTLET 7	174
12	TC-C12	COOLING LINE OUTLET 8	174
13	TC-C13	LEADS	164
14	TC-C14	LEADS	164

Oak Ridge National Laboratory
 managed for the DEPARTMENT OF ENERGY under
 U.S. GOVERNMENT contract DE-AC05-00OR22725
 UT-BATTELLE, LLC, Oak Ridge, Tennessee
 PROJECT NAME
NATIONAL COMPACT STELLARATOR EXPERIMENT
TYPE C MCWF
FINAL COIL ASSEMBLY

VERSION NO. 46	PLANT ORNL	BLDG 5700	FL 3	SHT OF 3	TYPE S	CLASS U
RELEASE LEVEL WIP	SE140-103			REV 0		