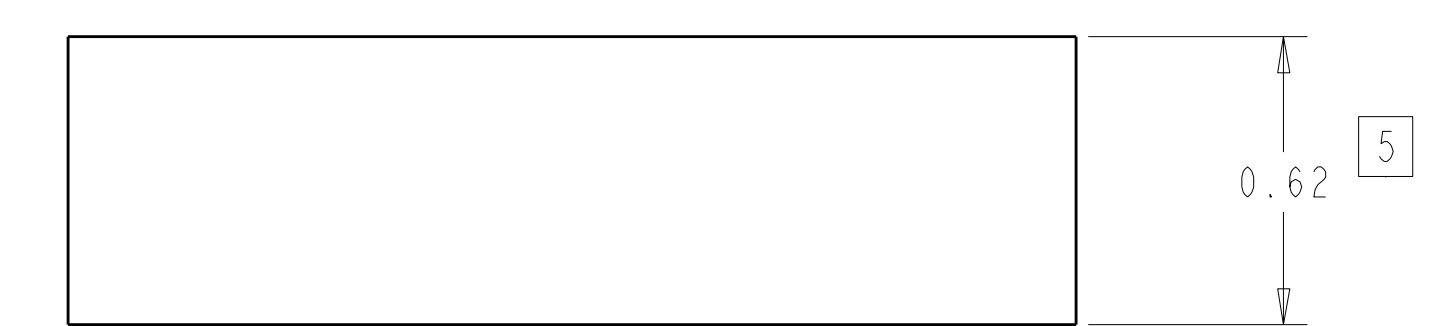
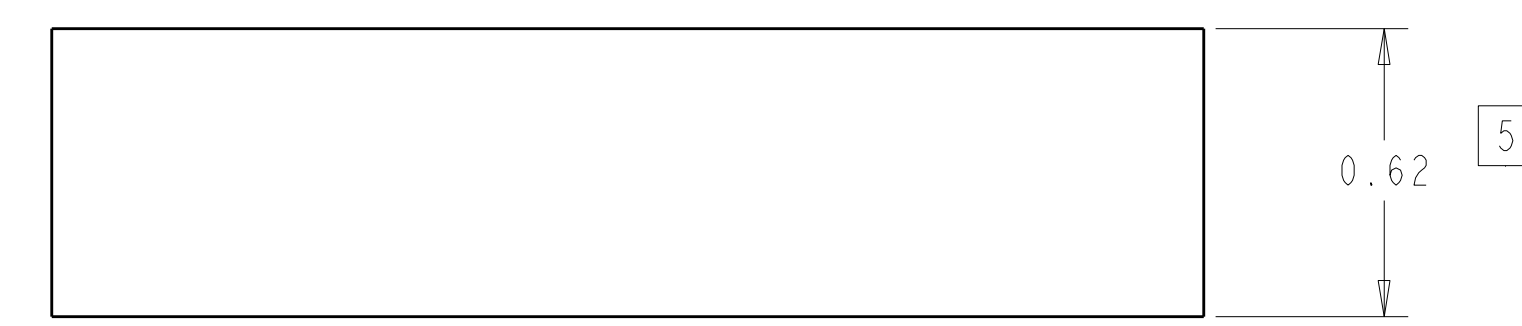
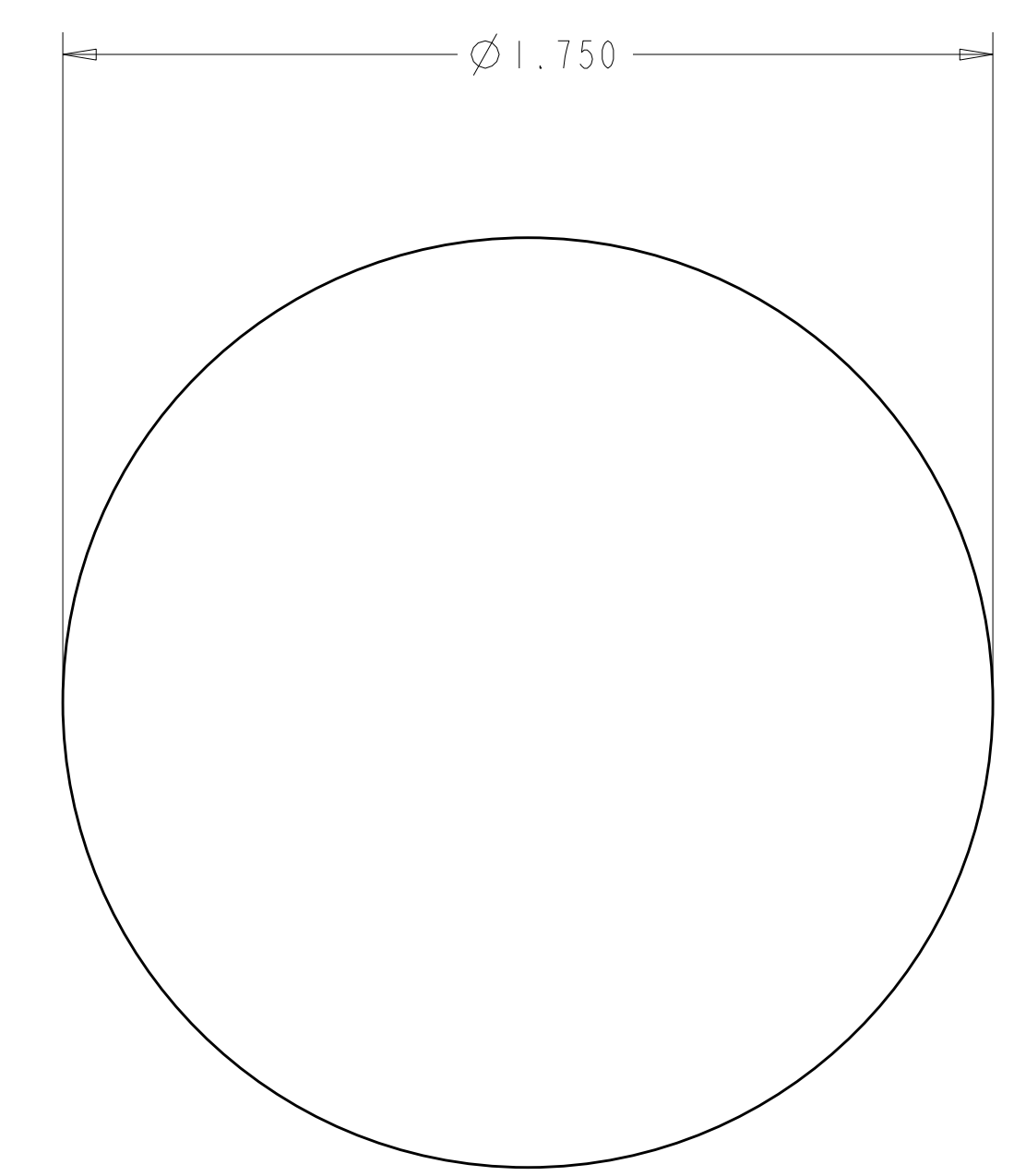
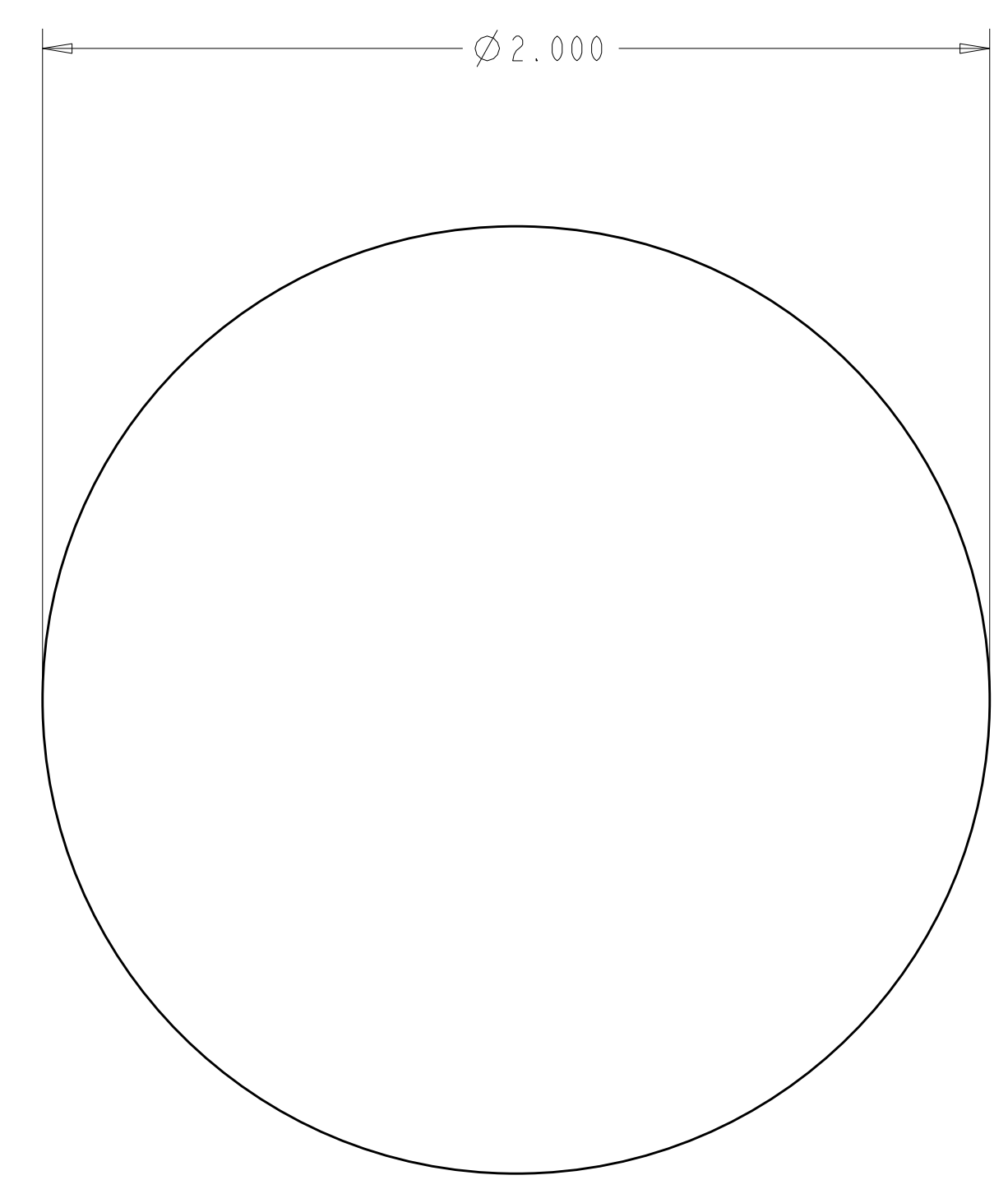


- NOTES
1. DRAWING PREPARED IN ACCORDANCE WITH ASME Y14.100-2004.
 2. INTERPRET DIMENSIONS AND TOLERANCES PER ASME Y14.5M-1994.
 3. DIMENSIONS ARE IN INCHES
 4. MAGNETIC PERMEABILITY NOT TO EXCEED 1.02 AS TESTED BY A SEVERN INDICATOR. AVAILABLE FROM:
 SEVERN ENGINEERING
 AUBURN, ALABAMA 36830
 WWW.SEVERNGINEERING.COM
 5. GRIND THICKNESS AND MARK FOR LOCATION AS REQUIRED FOR FINAL INSTALLATION



SE140-056-1 - SHIM PUCK - 2.00"
 SCALE 3 : 1

SE140-056-2 - SHIM PUCK - 1.75"
 SCALE 3 : 1

PRELIMINARY
 10-25-2007

CAGE CODE	PART OR IDENTIFYING NO	NOMENCLATURE OR DESCRIPTION	MATERIAL	SPECIFICATION	FIND NO
AR	SE140-056-2	SHIM PUCK - 1.75"	316 SST	ASTM A240	2
AR	SE140-056-1	SHIM PUCK - 2.00"	316 SST	ASTM A240	1

← NEXT ASSEMBLY

PARTS LIST

NO REPRESENTATION OR WARRANTY, EXPRESSED OR IMPLIED, IS MADE AS TO THE ACCURACY, COMPLETENESS OR USEFULNESS OF THE INFORMATION OR STATEMENTS CONTAINED IN THESE DRAWINGS, OR THAT THE USE OR DISCLOSURE OF ANY INFORMATION, APPARATUS, METHOD OR PROCESS DISCLOSED IN THESE DRAWINGS MAY NOT INFRINGE PRIVATE RIGHTS OF OTHERS. NO LIABILITY IS ASSUMED WITH RESPECT TO THE USE OF, OR FOR DAMAGES RESULTING FROM THE USE OF, ANY INFORMATION, APPARATUS, METHOD OR PROCESS DISCLOSED IN THESE DRAWINGS. DRAWINGS MADE AVAILABLE FOR INFORMATION TO BIDDER ARE NOT TO BE USED FOR OTHER PURPOSES, AND ARE TO BE RETURNED UPON REQUEST OF THE FORWARDING CONTRACTOR.

P THIS DRAWING PRODUCED ON PRO-ENGINEER

REV	DESCRIPTION	BY	DATE	CHK	DEPT	DATE	PE	REQ	DATE	ORNL	DOE	DATE
0	ORIGINAL ISSUE	SH	10/07	MC		10/07						

SCALE NOTED	DES: D WILLIAMSON 10/2007
TOLERANCES UNLESS OTHERWISE SPECIFIED	DRW: S HOMESCU 10/2007
FRACTIONS	CHK: M COLE 10/2007
XX DECIMALS ±.01	SECT: :
XXX DECIMALS ±.005	DEPT: :
ANGLES ±0°15'	PE: :
BREAK SHARP EDGES .06 MAX	CR: :
FINISH .125 UNLESS OTHERWISE SPECIFIED	PJ: :
	RED: :
	PPPL DRFT J SIEGEL 10/2007

UT-BATTELLE	Oak Ridge National Laboratory managed for the DEPARTMENT OF ENERGY under U.S. GOVERNMENT contract DE-AC05-00OR22725 UT-BATTELLE, LLC, Oak Ridge, Tennessee						
NATIONAL COMPACT STELLARATOR EXPERIMENT							
SHIM PUCK							
VERSION NO.	PLANT	BLDG	FL	SHT	OF	TYPE	CLASS
0	ORNL	5700	3	1	1	S	U
RELEASE LEVEL	SE140-056		REV 0				