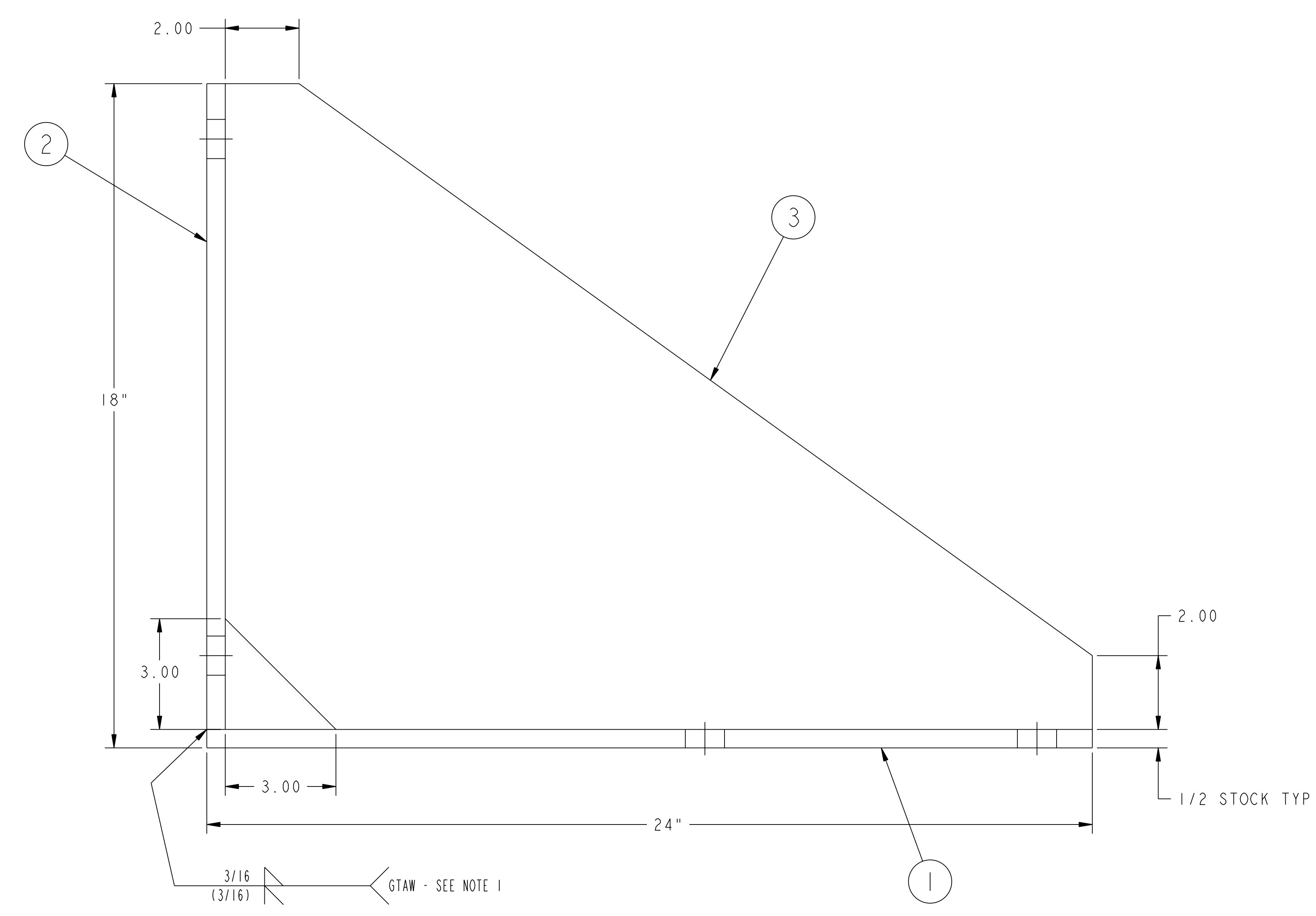
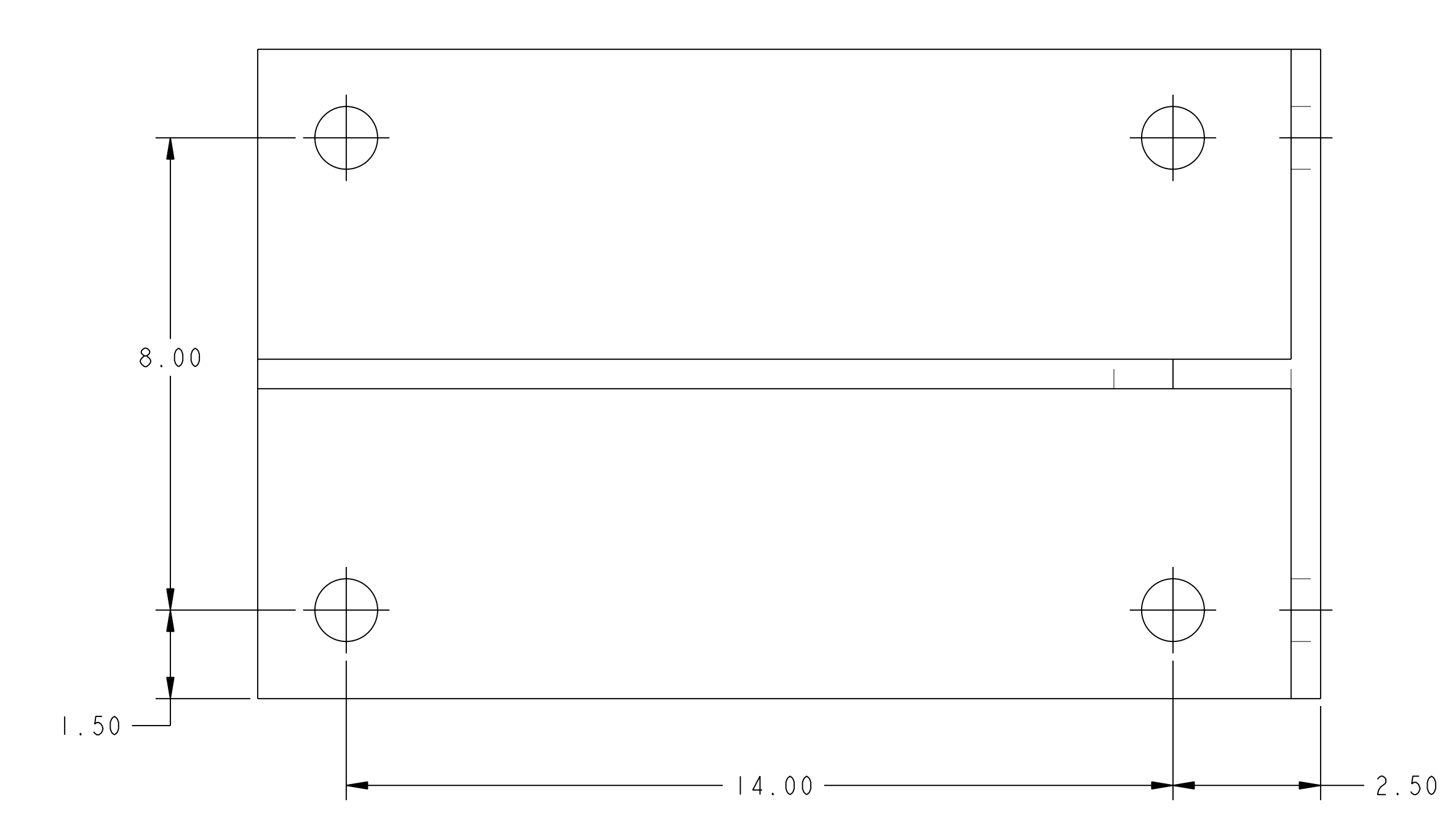
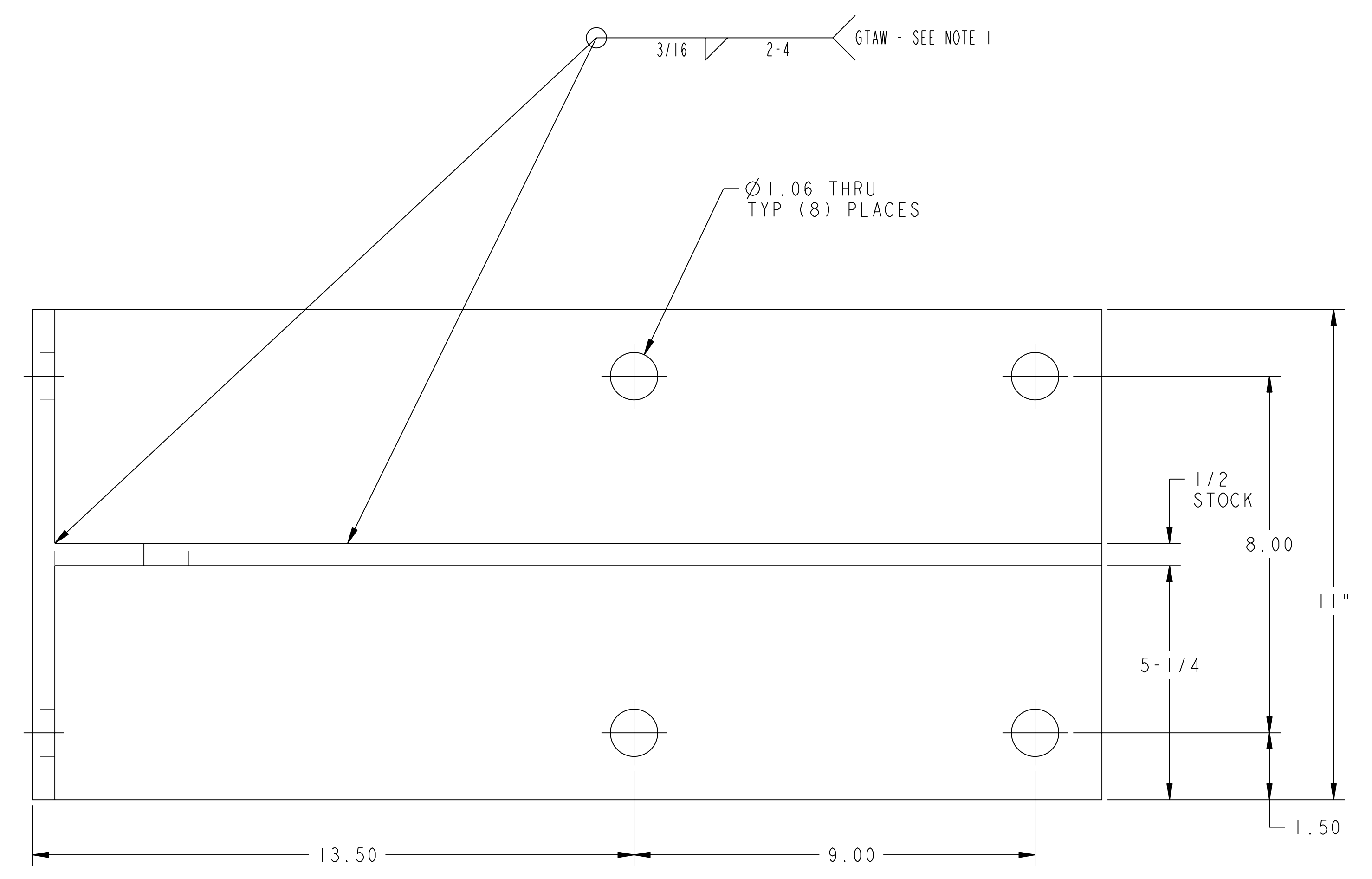


NO.	REVISION	BY	CH	SUP	APPROVED	DATE



01 ASSEMBLY
(1) REQ'D

NOTES

1. WELDING SHALL BE PERFORMED IN ACCORDANCE WITH THE REQUIREMENTS OF AWS D1.1 OR PPPL PROCEDURE ENG-037. VISUAL WELD INSPECTION SHALL BE PERFORMED IN ACCORDANCE WITH THE ACCEPTANCE CRITERIA OF AWS D1.1 Section 6.
2. ALL HOLES TO BE MACHINED AFTER ALL WELDS ARE COMPLETE.

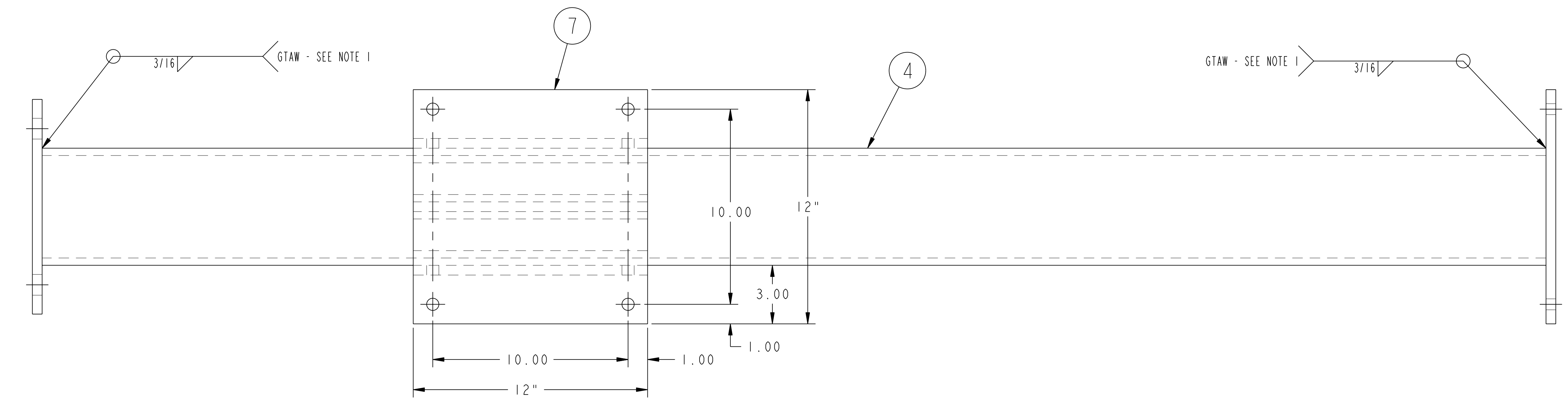
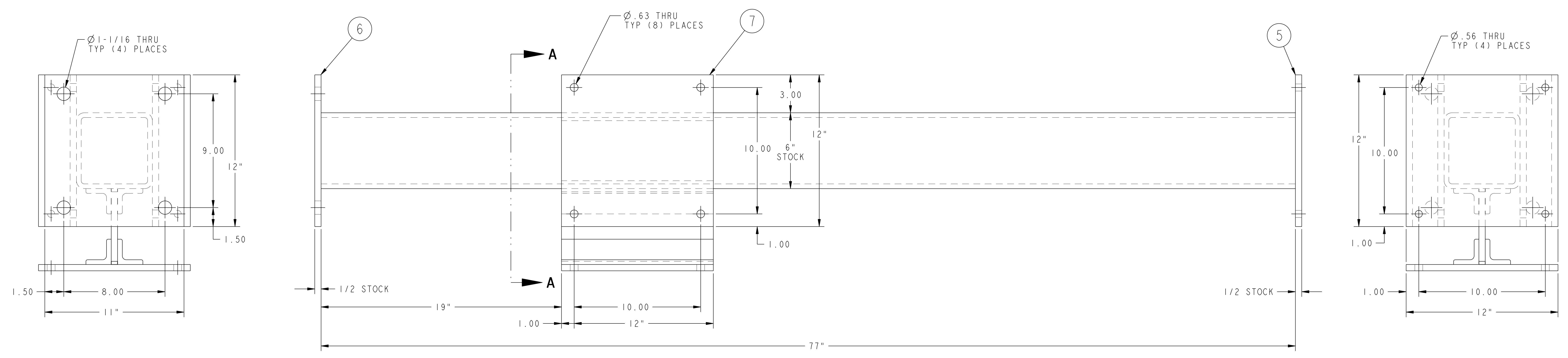
REV	NO.	DATE	DESCRIPTION	MATERIAL	QTY		
1	12		THIS DWG	OUTRIGGER TIE PLATE	ASTM A36		
1	11		THIS DWG	FOOT PLATE	ASTM A36		
1	10		THIS DWG	OUTRIGGER TUBE - 6" x 6" x 3/8 STRUCT TUBE	ASTM A36		
4	9		THIS DWG	MOUNTING CLIP ANGLE - 2 x 2 x 3/8 STRUCT ANGLE	ASTM A36		
1	8		THIS DWG	SANDWICH PLATE	ASTM A36		
2	7		THIS DWG	TIE PLATE	ASTM A36		
1	6		THIS DWG	TOP PLATE	ASTM A36		
1	5		THIS DWG	BASE PLATE	ASTM A36		
1	4		THIS DWG	VERTICAL TUBE - 6" x 6" x 3/8 STRUCT TUBE	ASTM A36		
	1	3	THIS DWG	GUSSET	ASTM A36		
	1	2	THIS DWG	VERTICAL PLATE	ASTM A36		
	1	1	THIS DWG	BASE PLATE	ASTM A36		
			THIS DWG	OUTRIGGER WELDMENT	3		
			THIS DWG	VERTICAL SUPPORT WELDMENT	1		
			THIS DWG	SUPPORT BRACKET WELDMENT	1		
03	02	01	PART NO.	DRAWING NO.	NOMENCLATURE OR DESCRIPTION	MATERIAL	QTY RECD

PARTS LIST

COMPUTER GENERATED DRAWING MANUAL CHANGES NOT PERMITTED Pro E	CENTRAL FILES: UNLESS OTHERWISE SPECIFIED DIMENSIONS ARE IN INCHES MACHINE SURFACES BREAK SHARP EDGES .005/.020	PRINCETON PLASMA PHYSICS LABORATORY NATIONAL COMPACT STELLARATOR EXPERIMENT FIELD PERIOD ASSEMBLY VACUUM VESSEL SUPPORT ASSEMBLY VERTICAL SUPPORT WELDMENTS
WEIGHT 100.0 lbs	DO NOT VERIFY INFORMATION BY SCALING DRAWING	DSN: L. MORRIS 8-2-2007 CHK: M. COLE 8-2-2007 ENGR: T. BROWN 8-2-2007 SUPV: J. SIEGEL 8-2-2007
MODEL NAME SE184-056-01	TOLERANCES NON-CUMULATIVE DECIMAL-INCH FRACTIONS .XX ±.000 .XXX ±.005 ANGULAR ±.0°-15'	DRAWING NO: SE184-056
RELEASE LEVEL: WIP DWG VERSION NO: 3	WELDING ENGINEER G. GETTELFINGER 8-2-2007	SHEET 1 OF 3 REV

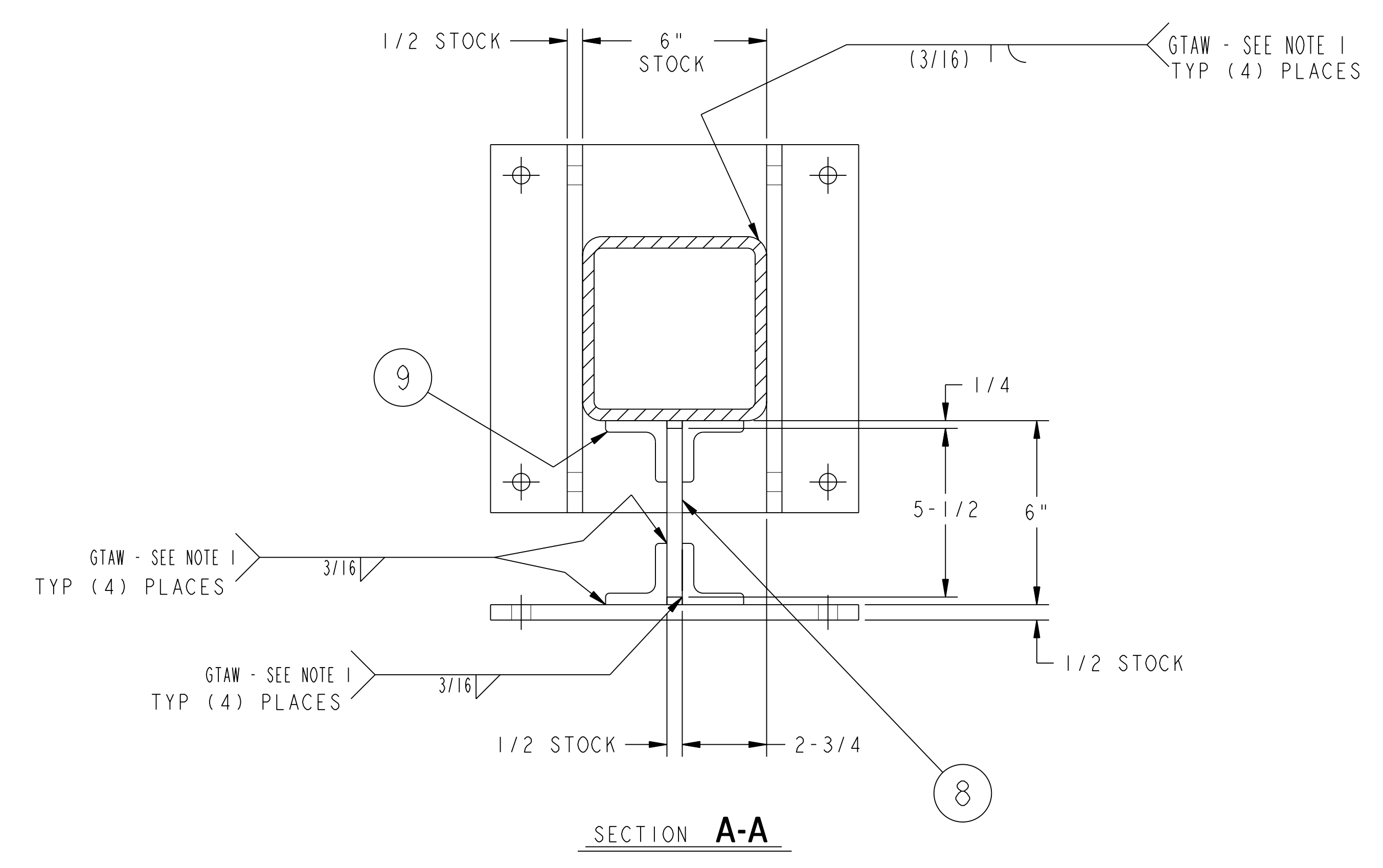
NCSX-SE184-056

NO.	REVISION	BY	CH	SUP	APPROVED	DATE



02 ASSEMBLY

(1) REQ'D

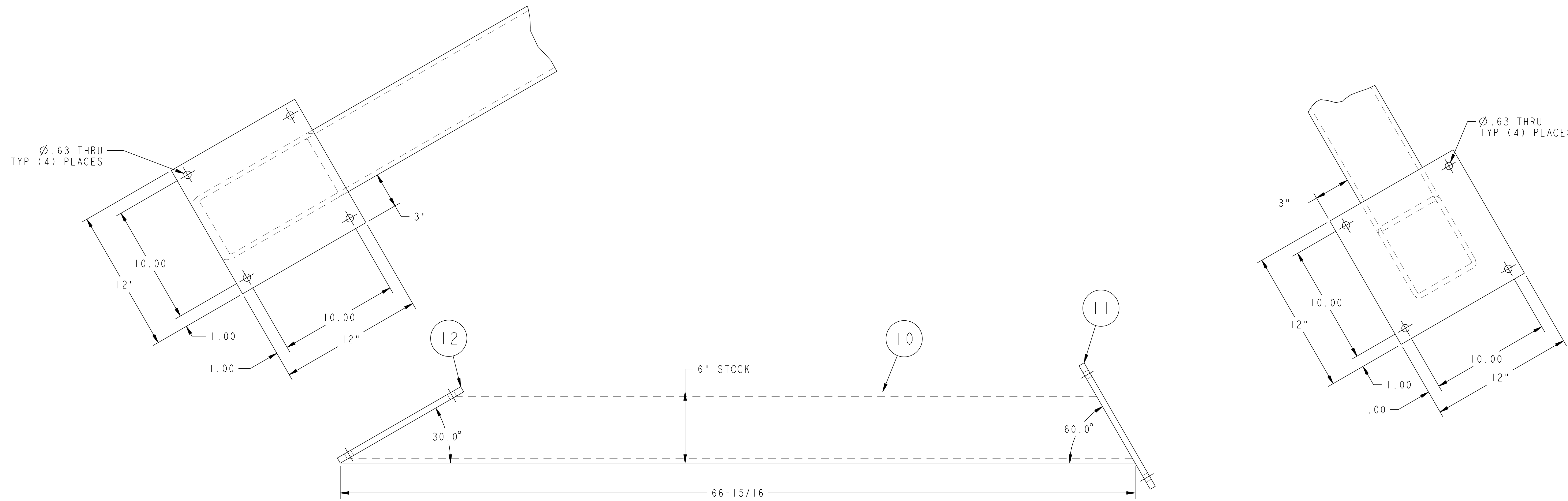


FOR NOTES AND BILL OF MATERIAL SEE SHEET 1

COMPUTER GENERATED DRAWING CHANGES NOT PERMITTED Pro E DO NOT VERIFY INFORMATION BY SCALING DRAWING	CENTRAL FILES: UNLESS OTHERWISE SPECIFIED	PRINCETON PLASMA PHYSICS LABORATORY PRINCETON UNIVERSITY NATIONAL COMPACT STELLARATOR EXPERIMENT	
	DIMENSIONS ARE IN INCHES MACHINE SURFACES BREAK SHARP EDGES .005/.020	FIELD PERIOD ASSEMBLY VACUUM VESSEL SUPPORT ASSEMBLY VERTICAL SUPPORT WELDMENTS	
WEIGHT 100.0 lbs	TOLERANCES NON-CUMULATIVE	DSN: L. MORRIS	8-2-2007 DRAWING NO:
MODEL NAME SE184-056-01	DECIMAL-INCH FRACTIONS	CHK: M. COLE	8-2-2007
WELDING ENGINEER G. GETTELFINGER 8-2-2007	XXX +/- .005 ANGULAR +/- 0°15'	ENGR: T. BROWN	8-2-2007
RELEASE LEVEL: WIP DWG VERSION NO: 3	NEXT ASSEMBLY	SUPV: J. SIEGEL	8-2-2007
			SHEET 2 OF 3
			REV 0.2

NCSX-SE184-056

NO.	REVISION	BY	CH	SUP	APPROVED	DATE



03 ASSEMBLY
(3) REQ'D

FOR NOTES AND BILL OF MATERIAL SEE SHEET 1

WEIGHT 312.3 lbs MODEL NAME SE184-056-02 WELDING ENGINEER G. GETTELFINGER 8-2-2007	COMPUTER GENERATED DRAWING MANUAL CHANGES NOT PERMITTED Pro E DO NOT VERIFY INFORMATION BY SCALING DRAWING	CENTRAL FILES: UNLESS OTHERWISE SPECIFIED DIMENSIONS ARE IN INCHES MACHINE SURFACES BREAK SHARP EDGES .005/.020	PRINCETON PLASMA PHYSICS LABORATORY NATIONAL COMPACT STELLARATOR EXPERIMENT FIELD PERIOD ASSEMBLY VACUUM VESSEL SUPPORT ASSEMBLY VERTICAL SUPPORT WELDMENTS	
	NEXT ASSEMBLY	TOLERANCES NON-CUMULATIVE DECIMAL-INCH FRACTIONS .X ±.000 0°-12° ±.010 .XX ±.030 12°-12° ±.010 .XXX ±.005 12°-120° ±.010 ANGULAR ±.0°-15° OVER 120° ±.12°	DSN: L. MORRIS CHK: M. COLE ENGR: T. BROWN SUPV: J. SIEGEL	DRAWING NO.: 8-2-2007 8-2-2007 8-2-2007 8-2-2007

RELEASE LEVEL: WIP
DWG VERSION NO: 6

NCSX-SE184-056