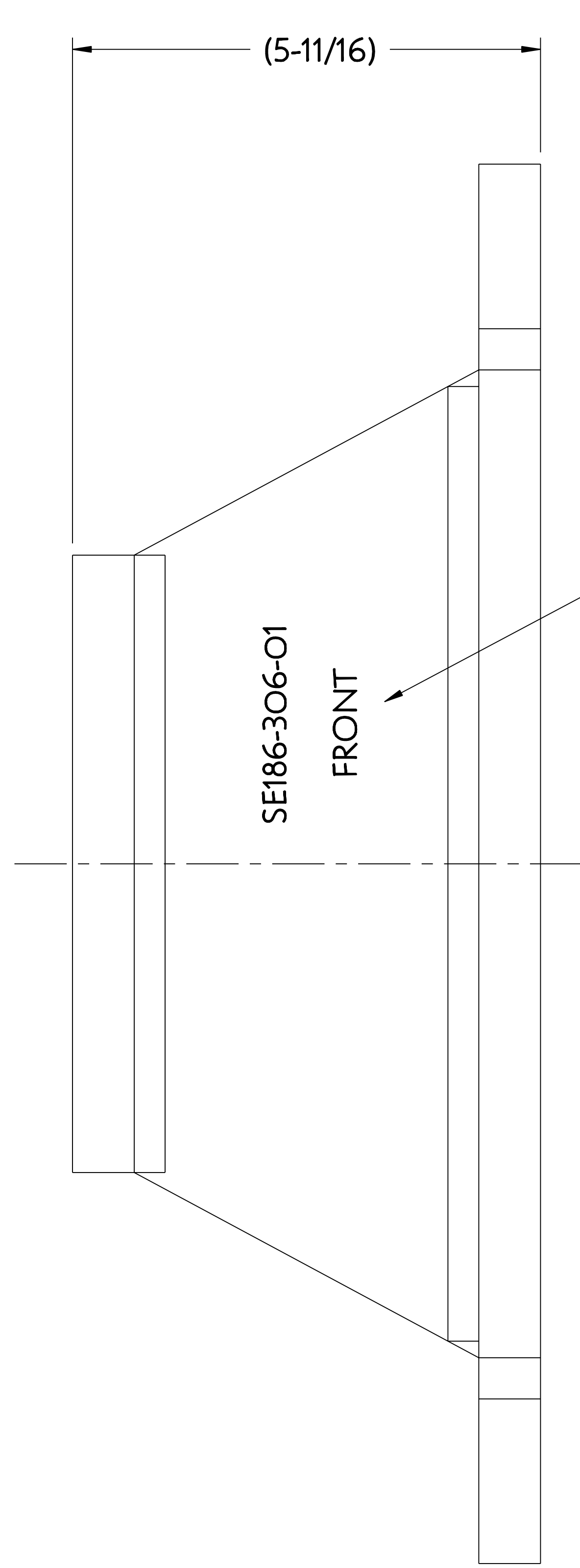
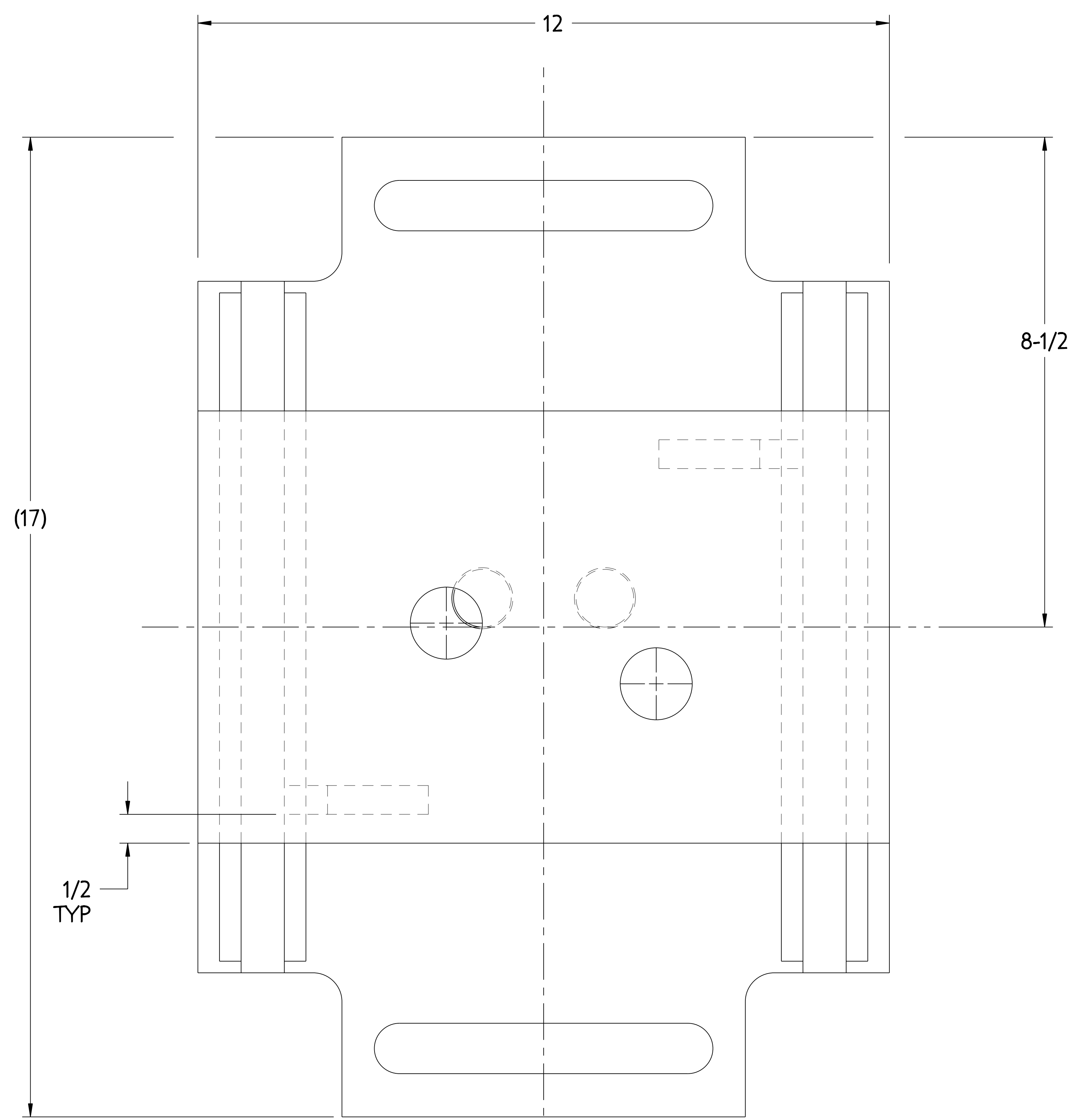
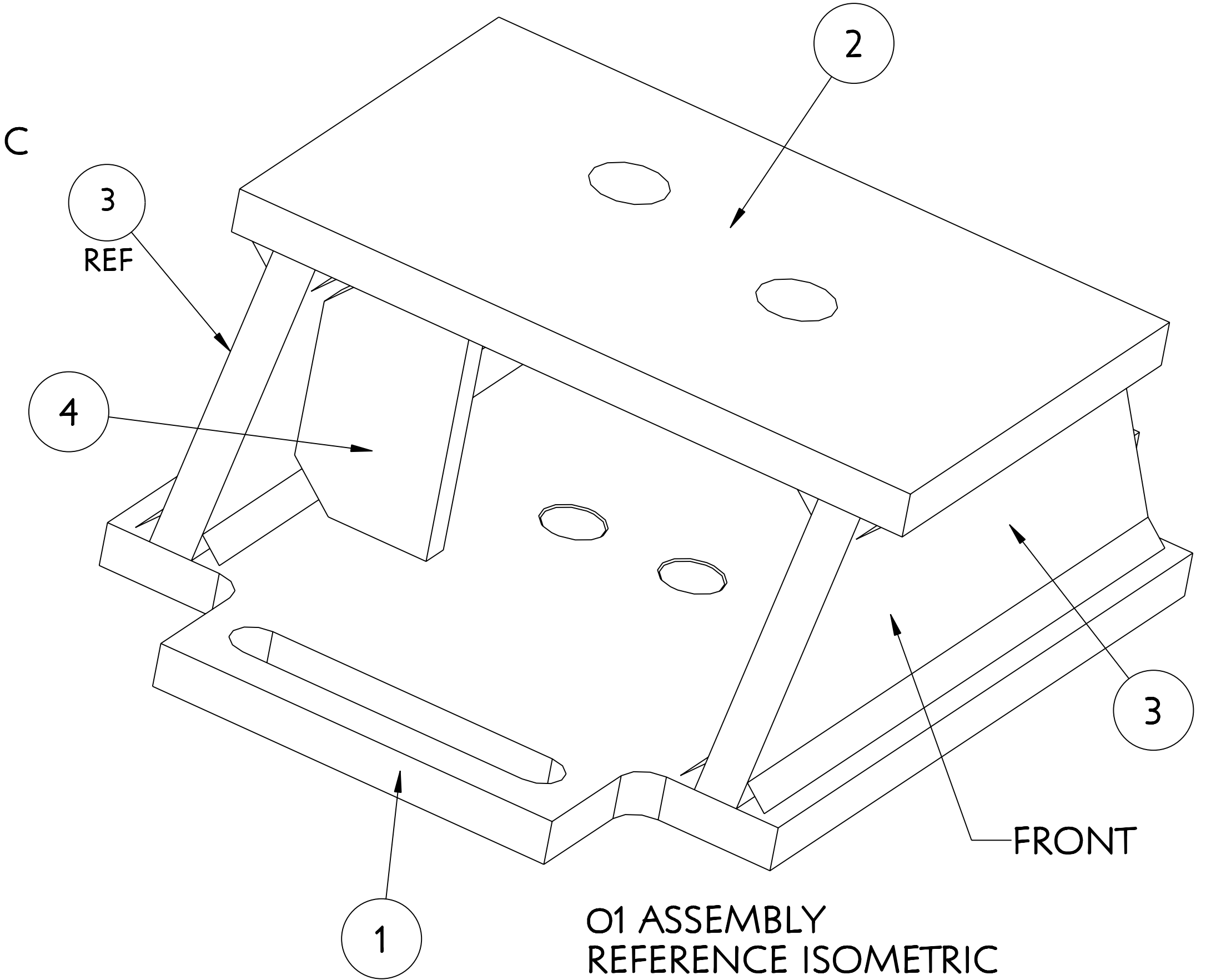
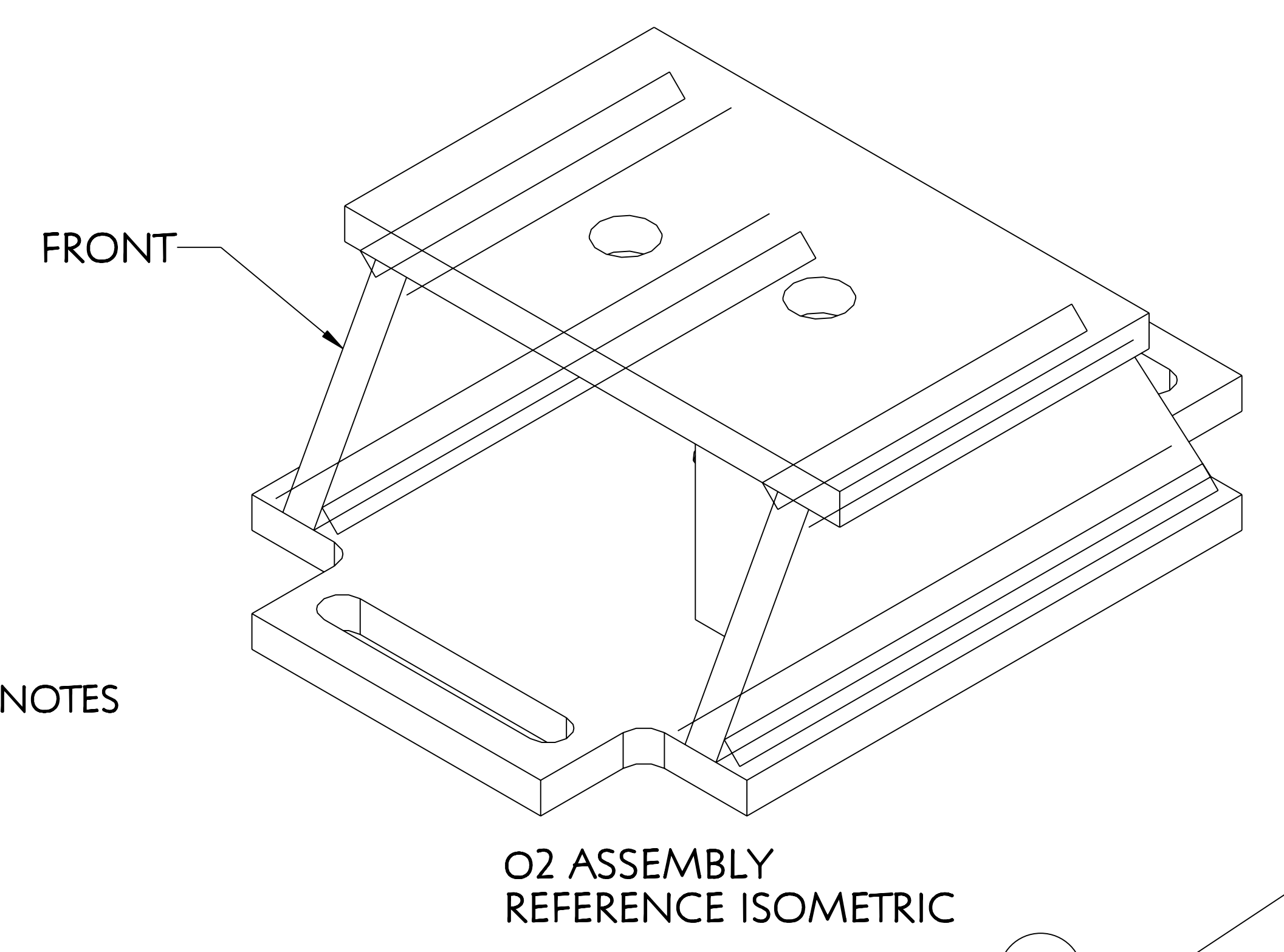
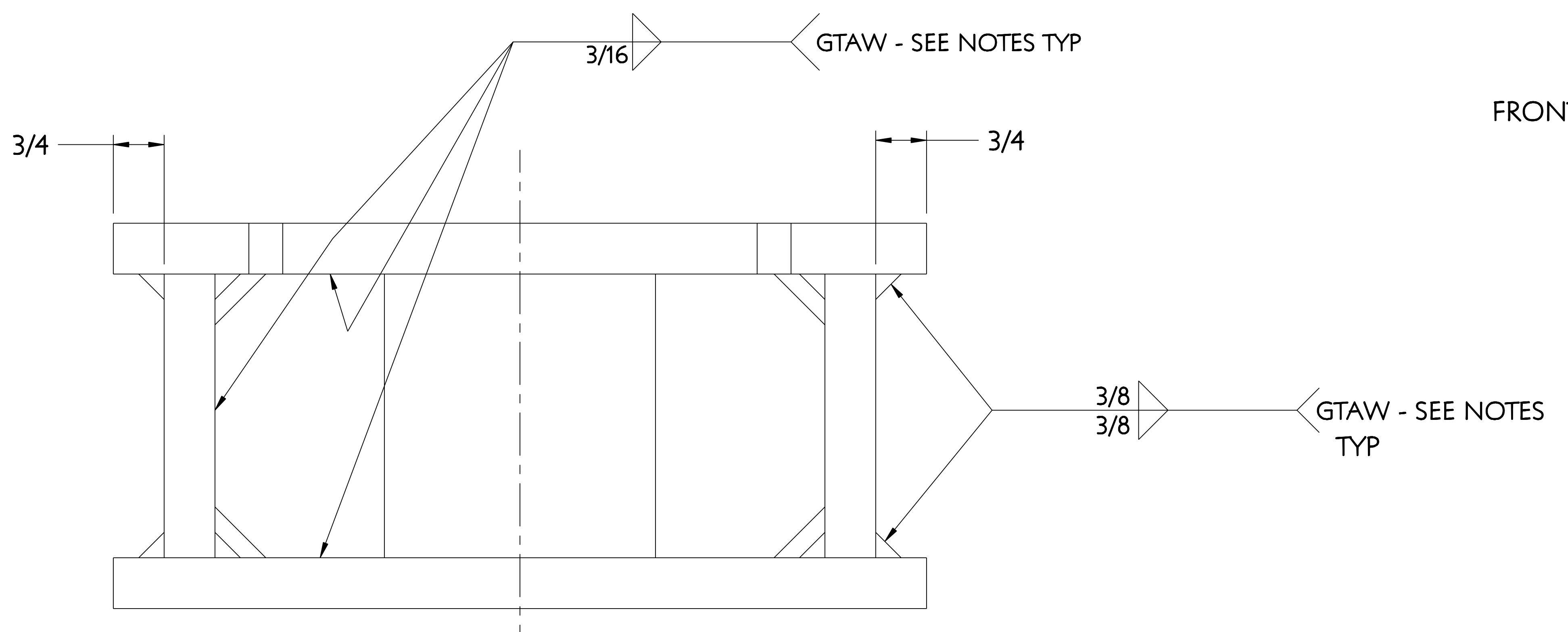


NO.	REVISION	BY	CH	SUP	APPROVED	DATE



IDENTIFIER FOR O1 ASSEMBLY AS SHOWN.
IDENTIFIER FOR O2 ASSEMBLY TO BE ON OPPOSITE SIDE.
SEE NOTES.

NOTE
WELDING SHALL BE PERFORMED IN ACCORDANCE WITH THE REQUIREMENTS OF AWS D1.1 OR PPPL PROCEDURE NO. ENG-37.
VISUAL WELD INSPECTION SHALL BE PERFORMED IN ACCORDANCE WITH THE ACCEPTANCE CRITERIA OF AWS D1.1 Section 6.
NOTE ORIENTATION OF ALL PARTS PRIOR TO WELDING.
BRACKET ASSEMBLY IS TO BE STAMPED OR PERMANENTLY MARKED WITH IDENTIFIER AS INDICATED.
SAND BLAST AND APPLY 2 COATS "SAFETY YELLOW" PAINT.

O1 ASSEMBLY - AS SHOWN - (1) REQ'D
O2 ASSEMBLY - OPPOSITE - (1) REQ'D

PART NO.	DRAWING NO	NOMENCLATURE OR DESCRIPTION	MATERIAL	QTY REQD
4	SE186-306-4	GUSSET SEGMENT "A" MCWF BRACKET	ASTM A36	2
3	SE186-306-3	SIDE PLATE SEGMENT "A" MCWF BRACKET	CARBON STEEL	2
2	SE186-306-2	TOP PLATE SEGMENT "A" MCWF BRACKET	CARBON STEEL	1
1	SE186-306-1	BASE PLATE SEGMENT "A" MCWF BRACKET	CARBON STEEL	1

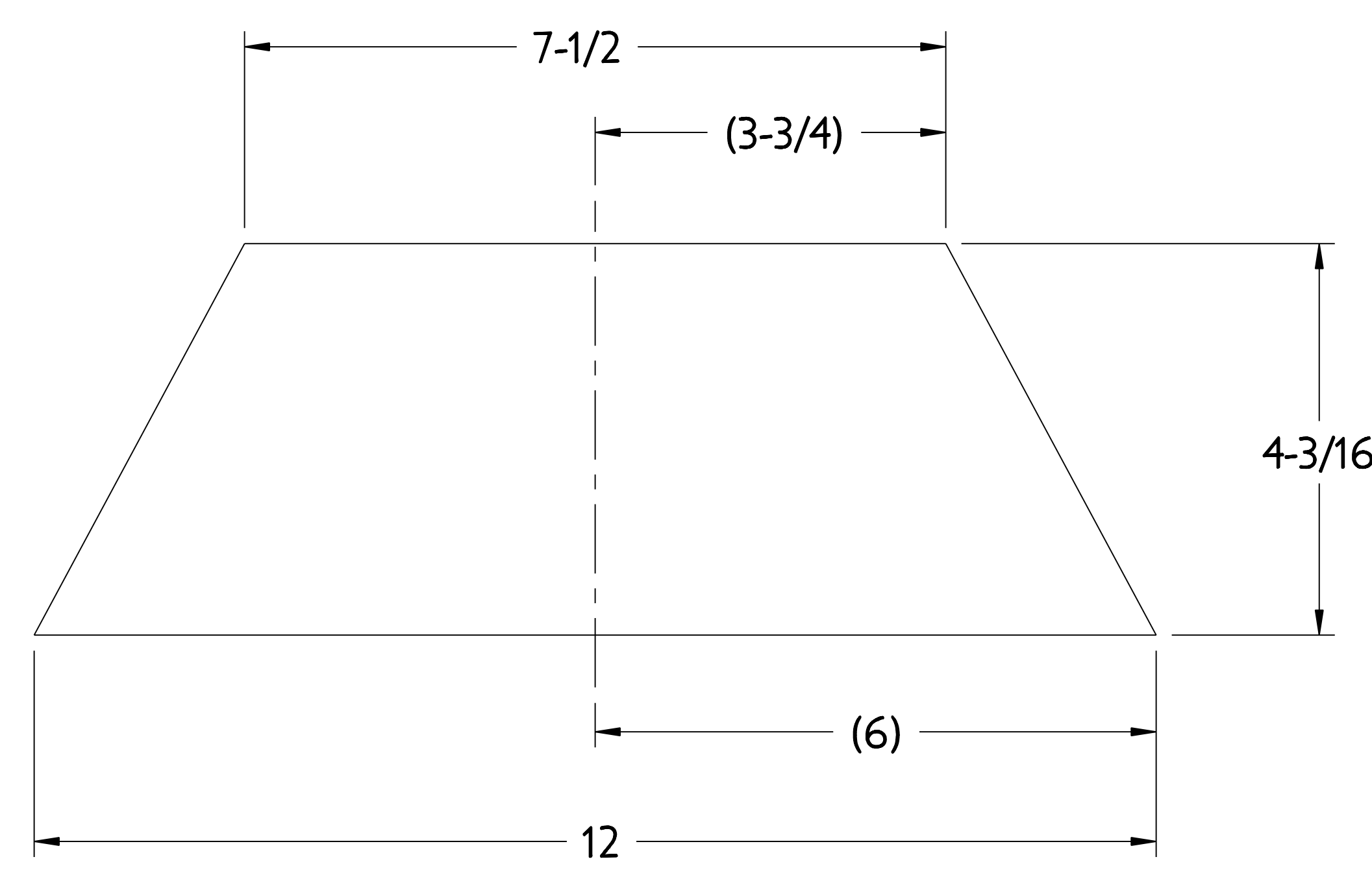
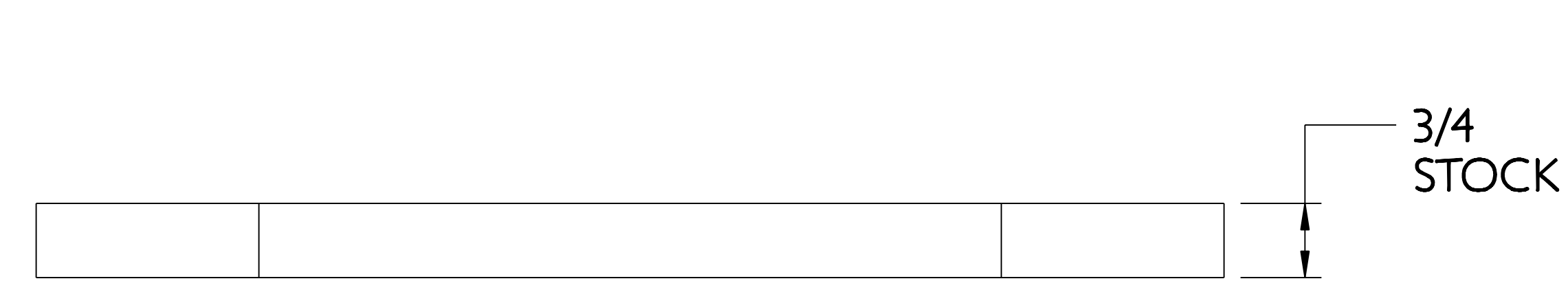
PARTS LIST

COMPUTER GENERATED DRAWING DRAWING CHANGES NOT PERMITTED	CENTRAL FILES: UNLESS OTHERWISE SPECIFIED	PRINCETON PLASMA PHYSICS LABORATORY PRINCETON UNIVERSITY NATIONAL COMPACT STELLARATOR EXPERIMENT	
DO NOT VERIFY INFORMATION BY SCALING DRAWING	Pro E	DIMENSIONS ARE IN INCHES MACHINE SURFACES UNLESS OTHERWISE SPECIFIED BREAK SHARP EDGES .005/ .020	
SCALE 0.875	TOLERANCES NON-CUMULATIVE	DSN: J. RUSHINSKI	8-2-2007
NEXT ASSEMBLY	DECIMAL-INCH FRACTIONS	CHK: M. COLE	8-2-2007
WEIGHT 76.1 lbs	MODEL NAME SE186-306-01	ENGR: T. BROWN	8-2-2007
WELDING ENGINEER G. GETTELFINGER 8-2-2007	RELEASE LEVEL: *** DWG VERSION NO: 6	SUPV: J. SIEGEL	8-2-2007

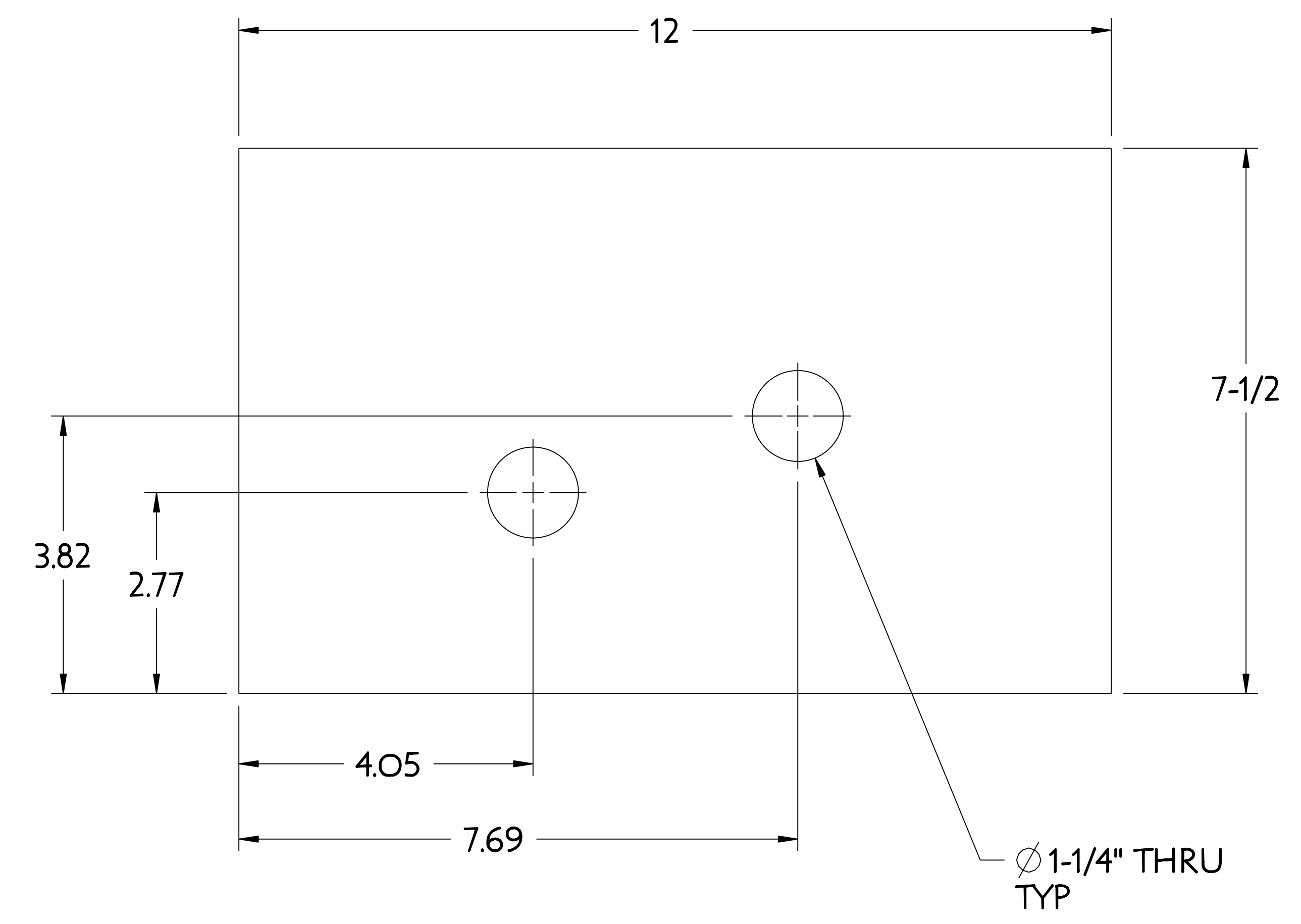
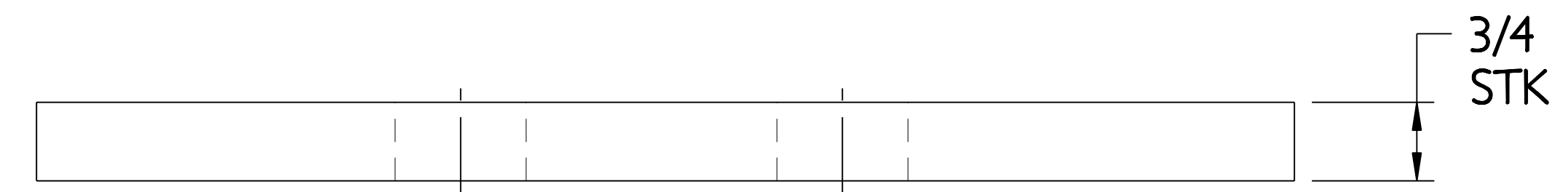
DRAWING NO: **SE186-306**
SHEET 1 OF 2 REV 0

NCSX-SE186-306

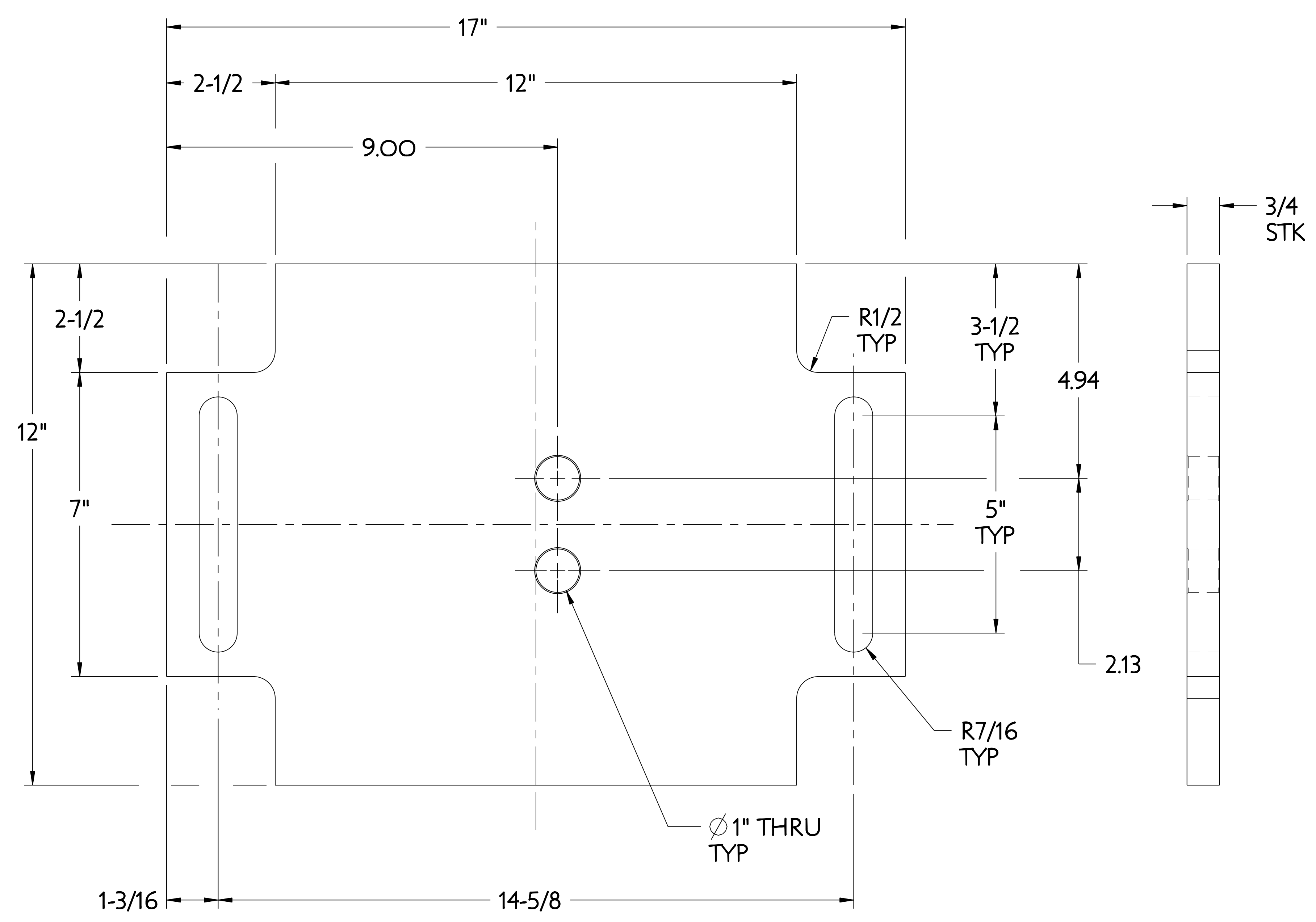
NO.	REVISION	BY	CH	SUP	APPROVED	DATE



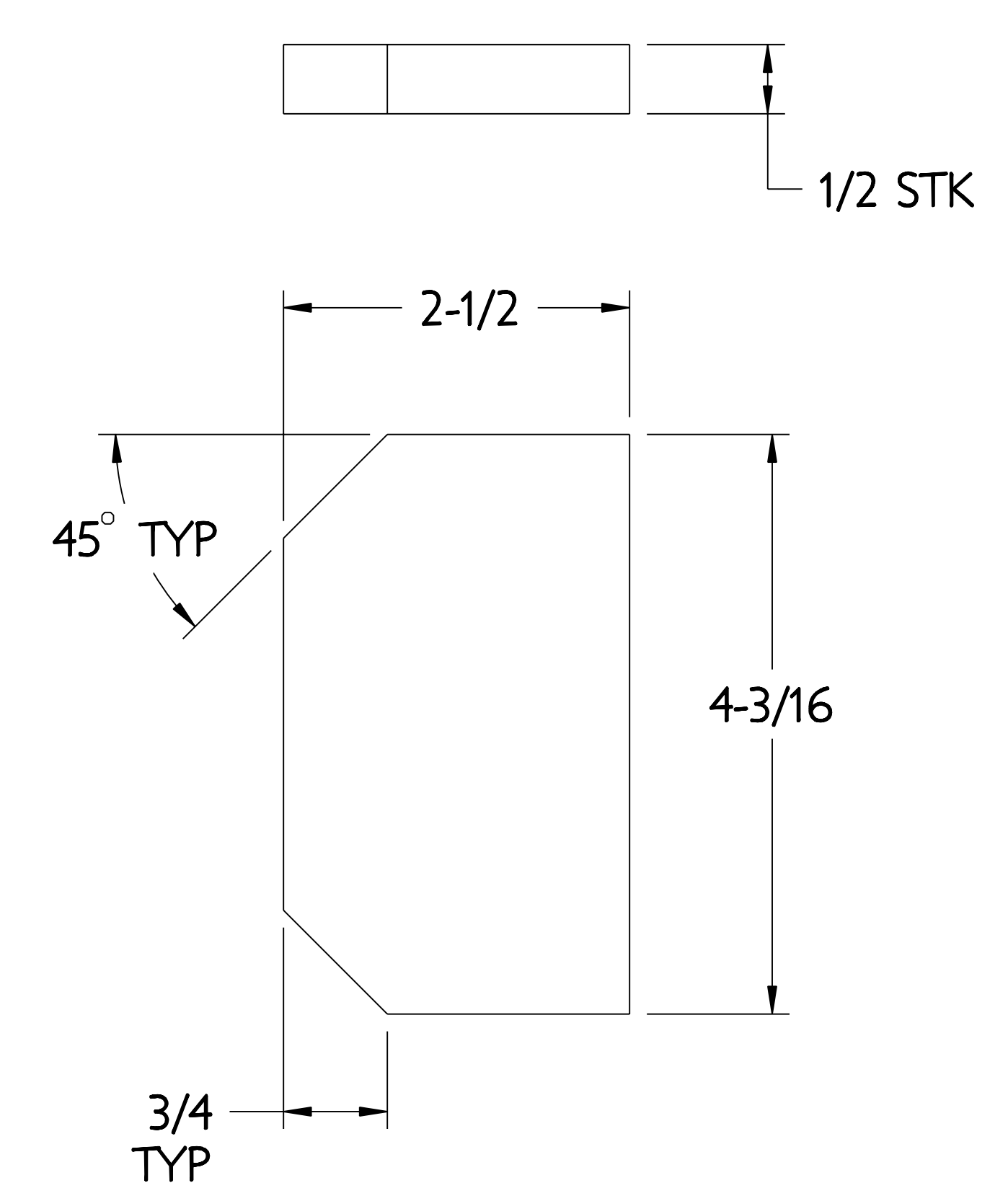
3 SIDE PLATE



2 TOP PLATE



1 BASE PLATE



4 GUSSET

FOR NOTES AND BILL OF MATERIAL SEE SHEET 1

COMPUTER GENERATED DRAWING MANUAL CHANGES NOT PERMITTED Pro E DO NOT VERIFY INFORMATION BY SCALING DRAWING	CENTRAL FILES:	PRINCETON PLASMA PHYSICS LABORATORY NATIONAL COMPACT STELLARATOR EXPERIMENT	
	UNLESS OTHERWISE SPECIFIED	STELLARATOR CORE TOOLING DESIGN & FABRICATION MCWF SEGMENT "A" SUPPORT BRACKET DETAILS	
WEIGHT 76.1 lbs	DIMENSIONS ARE IN INCHES MACHINE SURFACES BREAK SHARP EDGES .005/.020	DSN: J. RUSHINSKI 8-2-2007	DRAWING NO: SE186-306
MODEL NAME SE186-306-01	TOLERANCES NON-CUMULATIVE DECIMAL-INCH FRACTIONS .XX ±.005 ANGULAR ±.0°-15° OVER 120° ±.1°-1.2°	CHK: M. COLE ENGR: T. BROWN SUPV: J. SIEGEL	8-2-2007 8-2-2007 8-2-2007
RELEASE LEVEL: *** DWG VERSION NO: 6	WELDING ENGINEER	NEXT ASSEMBLY	SHEET 2 OF 2 REV 0.5

NCSX-SE186-306