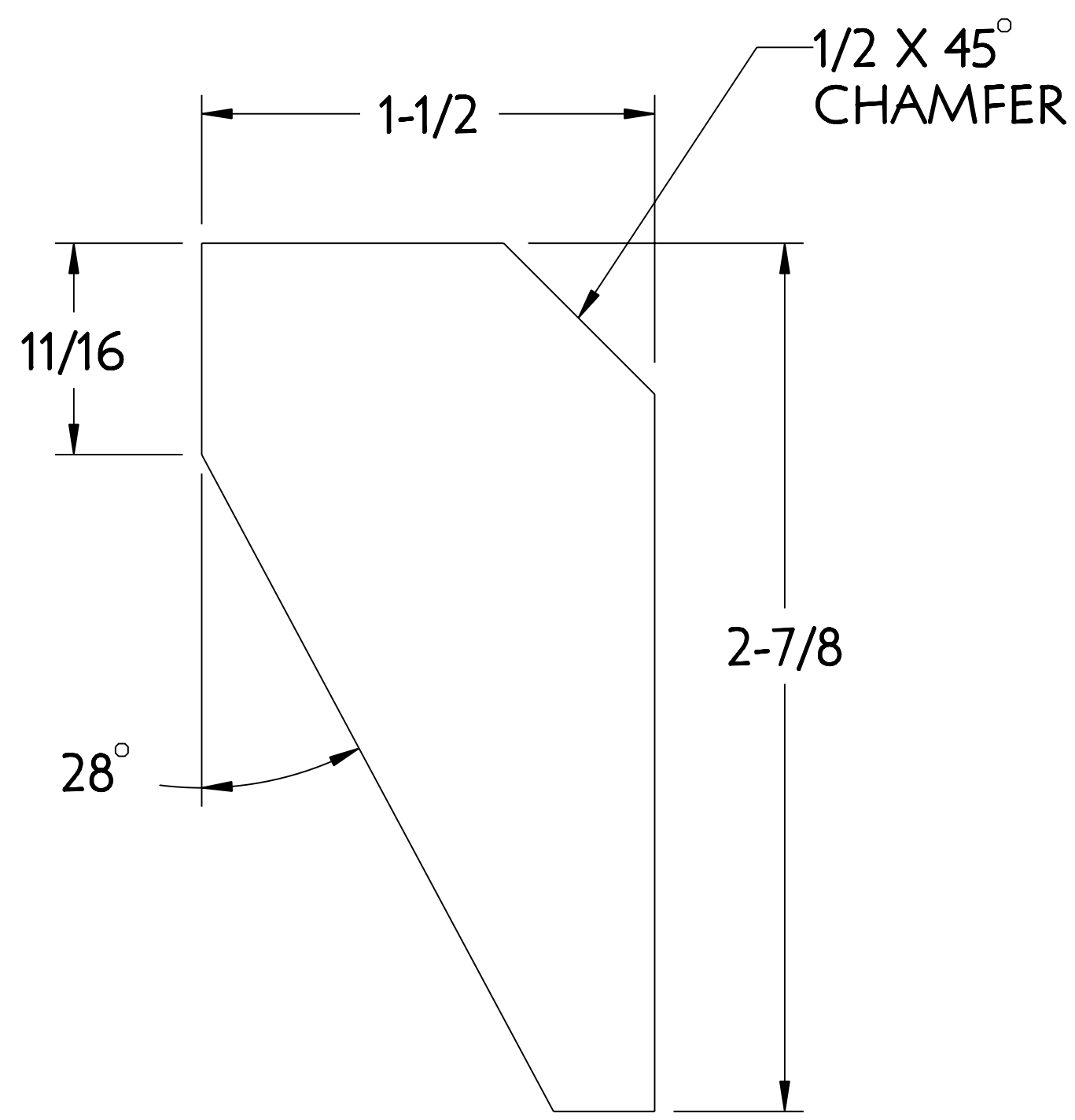
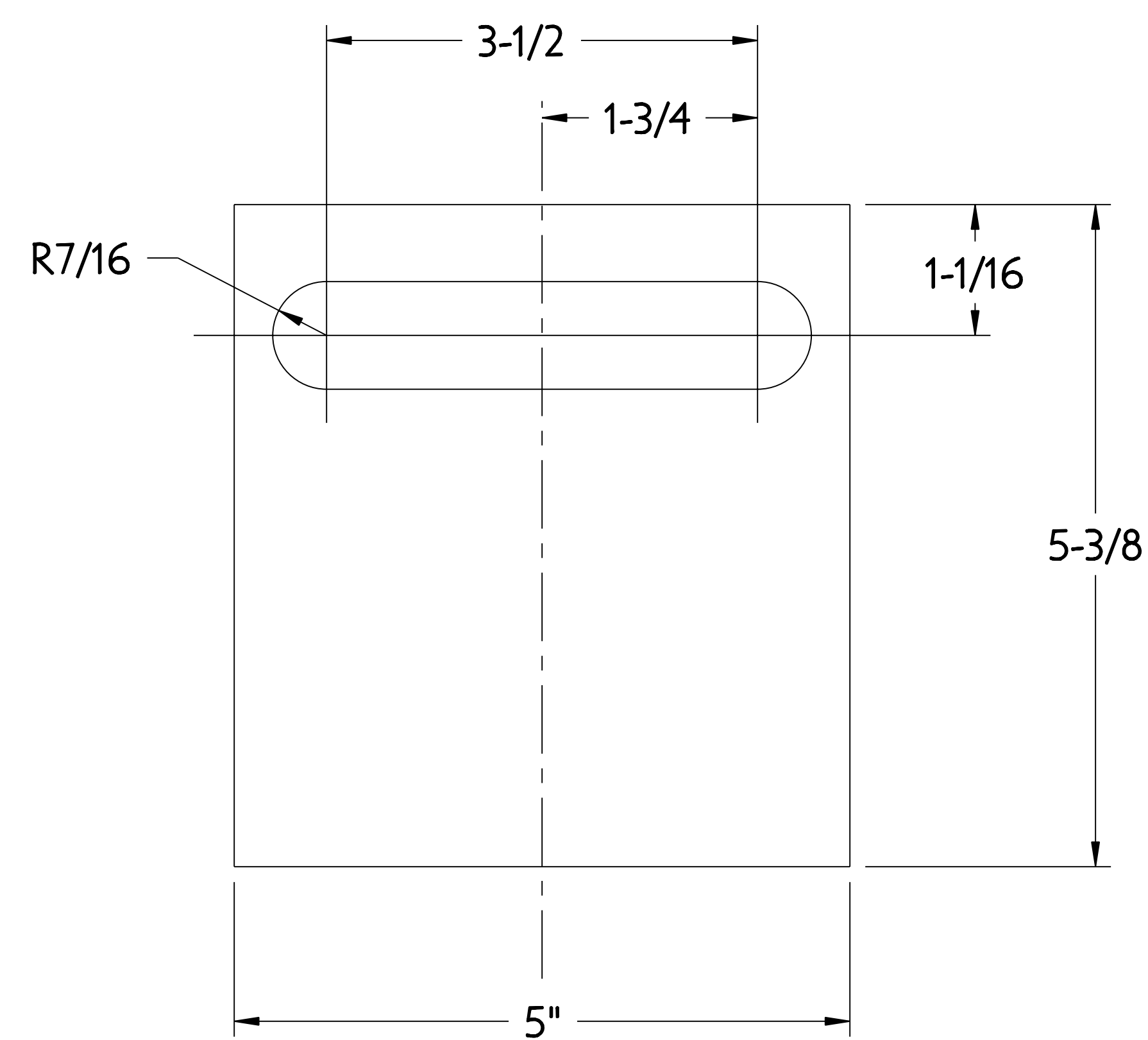


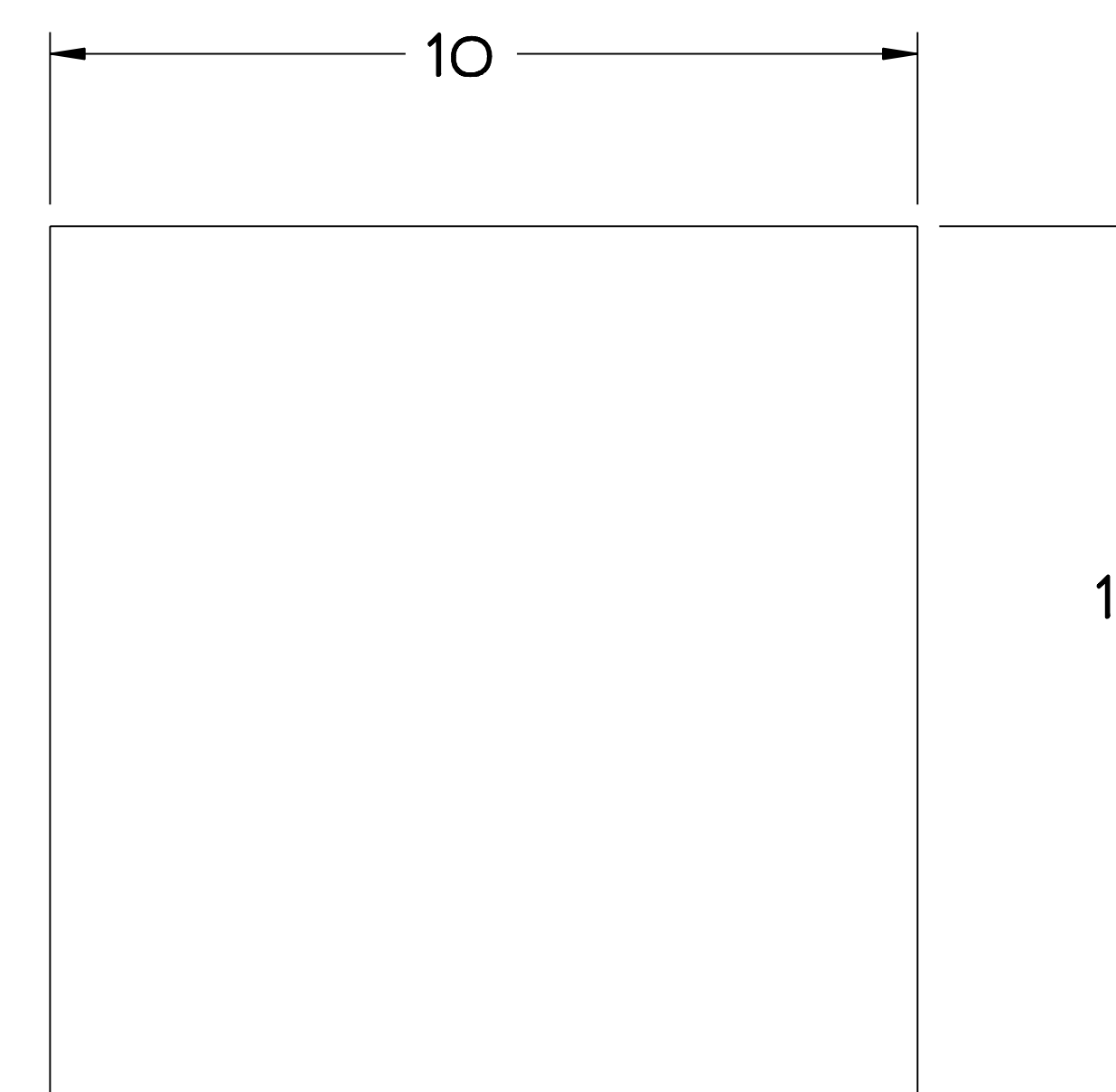
NO.	REVISION	BY	CH	SUP	APPROVED	DATE



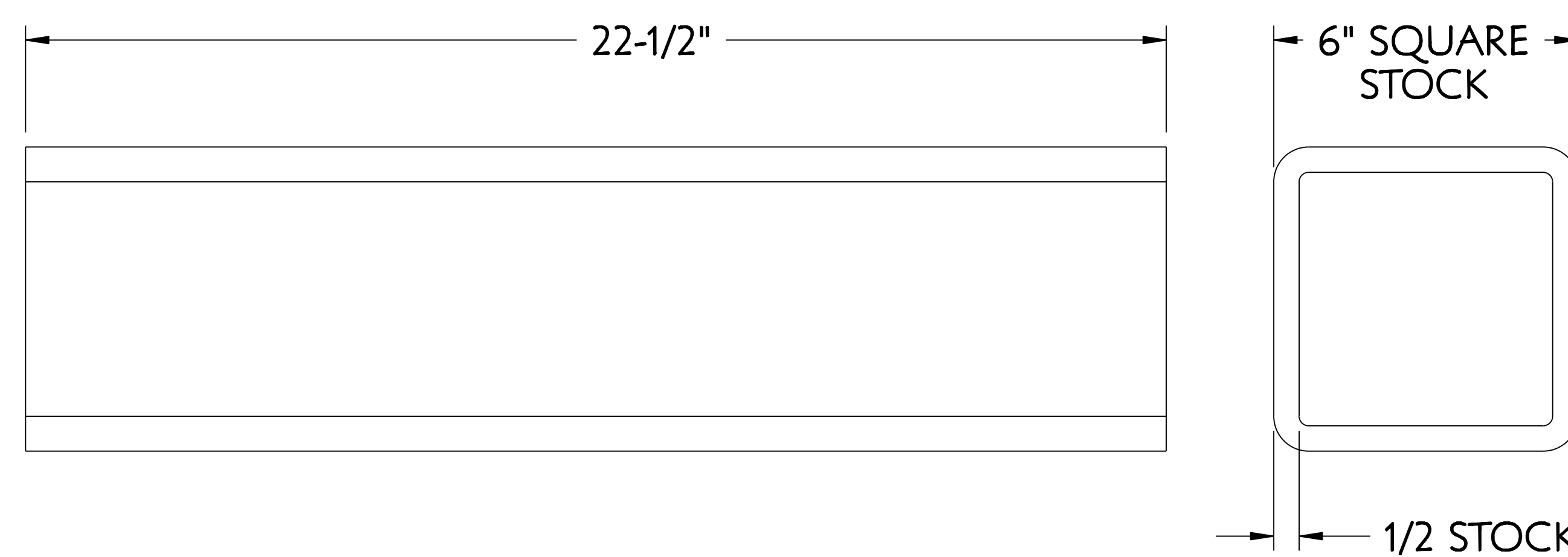
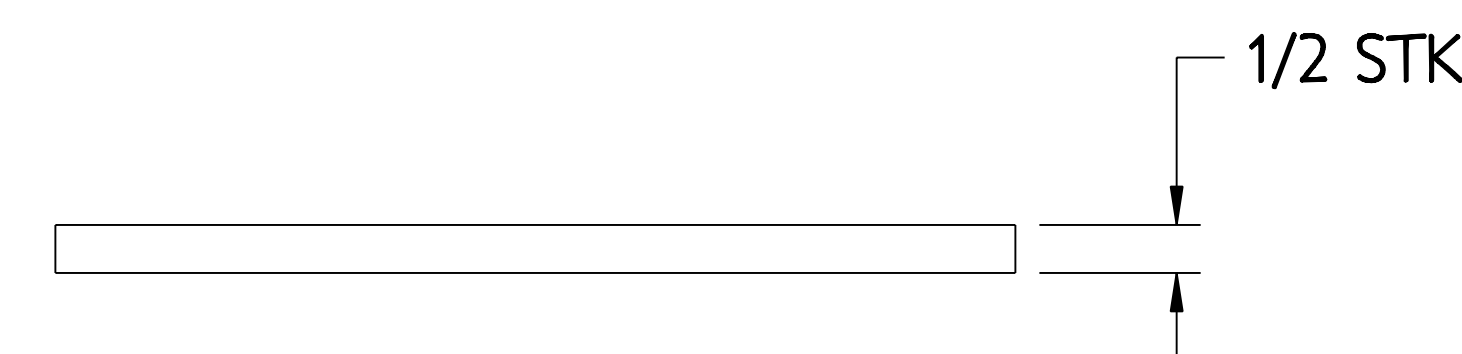
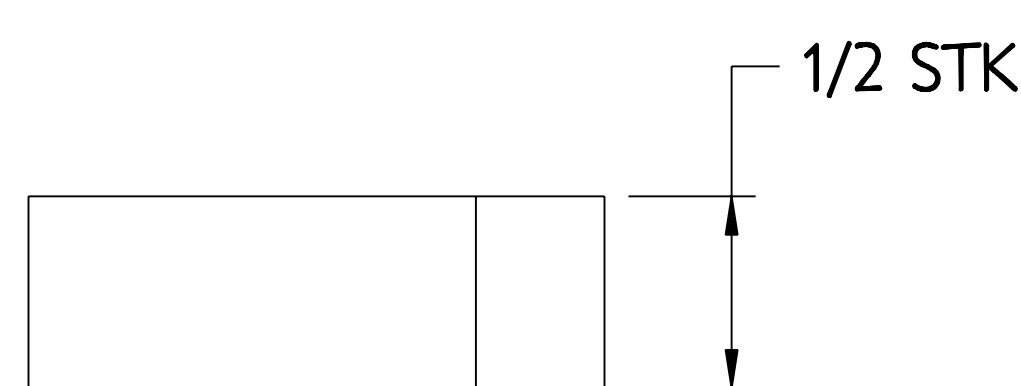
1
GUSSET
MAKE FROM 1 1/2 X 3 X 1/2 THK PLATE



2
STABILIZER PLATE
MAKE FROM 6 X 6 X 1/2 THK PLATE



3
TOP PLATE
MAKE FROM 10 X 10 X 1/2 THK PLATE



5
SUPPORT POST
MAKE FROM 6" SQUARE TUBE

PART NO.	DRAWING/MODEL NO	NOMENCLATURE OR DESCRIPTION	MATERIAL	QTY	REOD
5	SE186-328-5	SUPPORT POST	ASTM A36		
3	SE186-328-3	MCWF SEGMENT TOP PLATE LARGE	ASTM A36		
2	SE186-328-2	MCWF SEGMENT SUPPORT LOCKING PLATE	ASTM A36		
1	SE186-328-1	MCWF SEGMENT SUPPORT GUSSET PLATE	ASTM A36		

PARTS LIST

COMPUTER GENERATED DRAWING MANUAL CHANGES NOT PERMITTED	CENTRAL FILES: UNLESS OTHERWISE SPECIFIED	PRINCETON PLASMA PHYSICS LABORATORY PRINCETON UNIVERSITY NATIONAL COMPACT STELLARATOR EXPERIMENT	
PRO E	DIMENSIONS ARE IN INCHES MACHINE SURFACES	STELLARATOR CORE TOOLING DESIGN & FABRICATION MCWF SUPPORT CART SUPPORT POST DETAILS	
DO NOT VERIFY INFORMATION BY SCALING DRAWING	TOLERANCES NON-CUMULATIVE BREAK SHARP EDGES .005/.020	DSN: J. RUSHINSKI 8-2-2007	DRAWING NO: SE186-328
	DECIMAL-INCH FRACTIONS	CHK: M. COLE 8-2-2007	
	ANGULAR ±.05 OVER 120° ±.12	ENGR: T. BROWN 8-2-2007	
		SUPV: J. SIEGEL 8-2-2007	SHEET 1 OF 1 REV 0

WEIGHT	
MODEL NAME	SE186-328-1
WELDING ENGINEER	

RELEASE LEVEL: WIP
 DWG VERSION NO: 5

NCSX-SE186-328