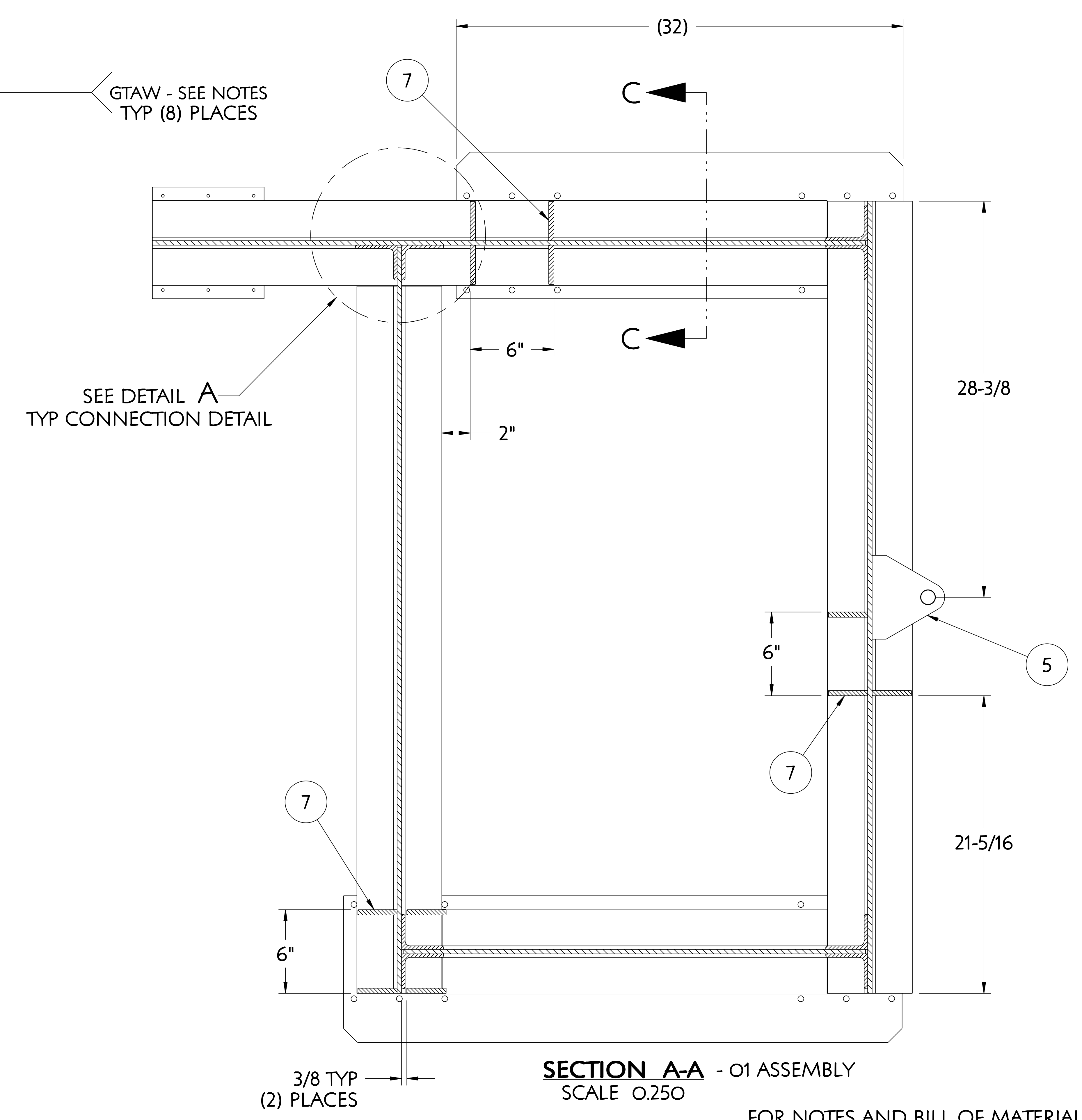
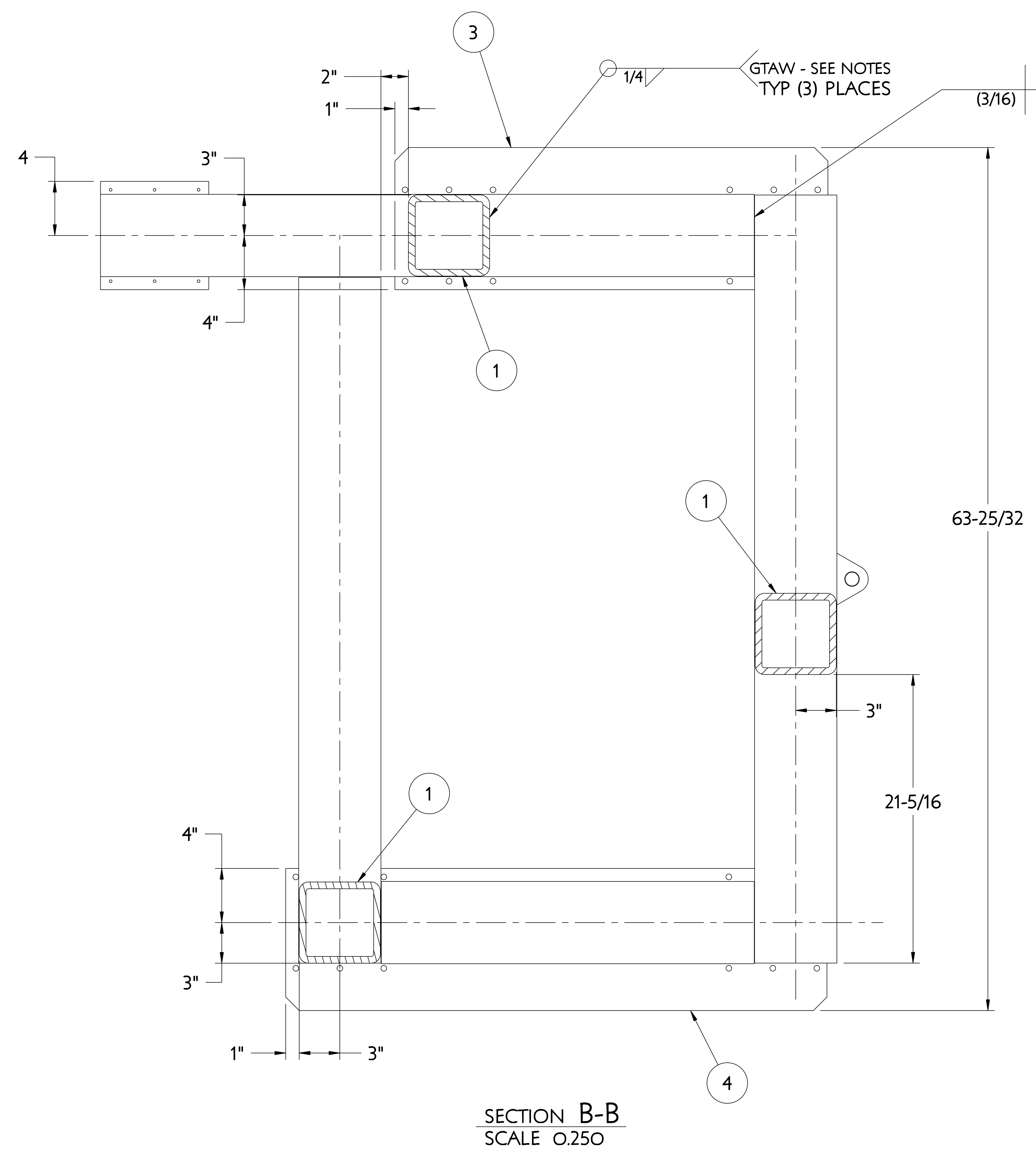
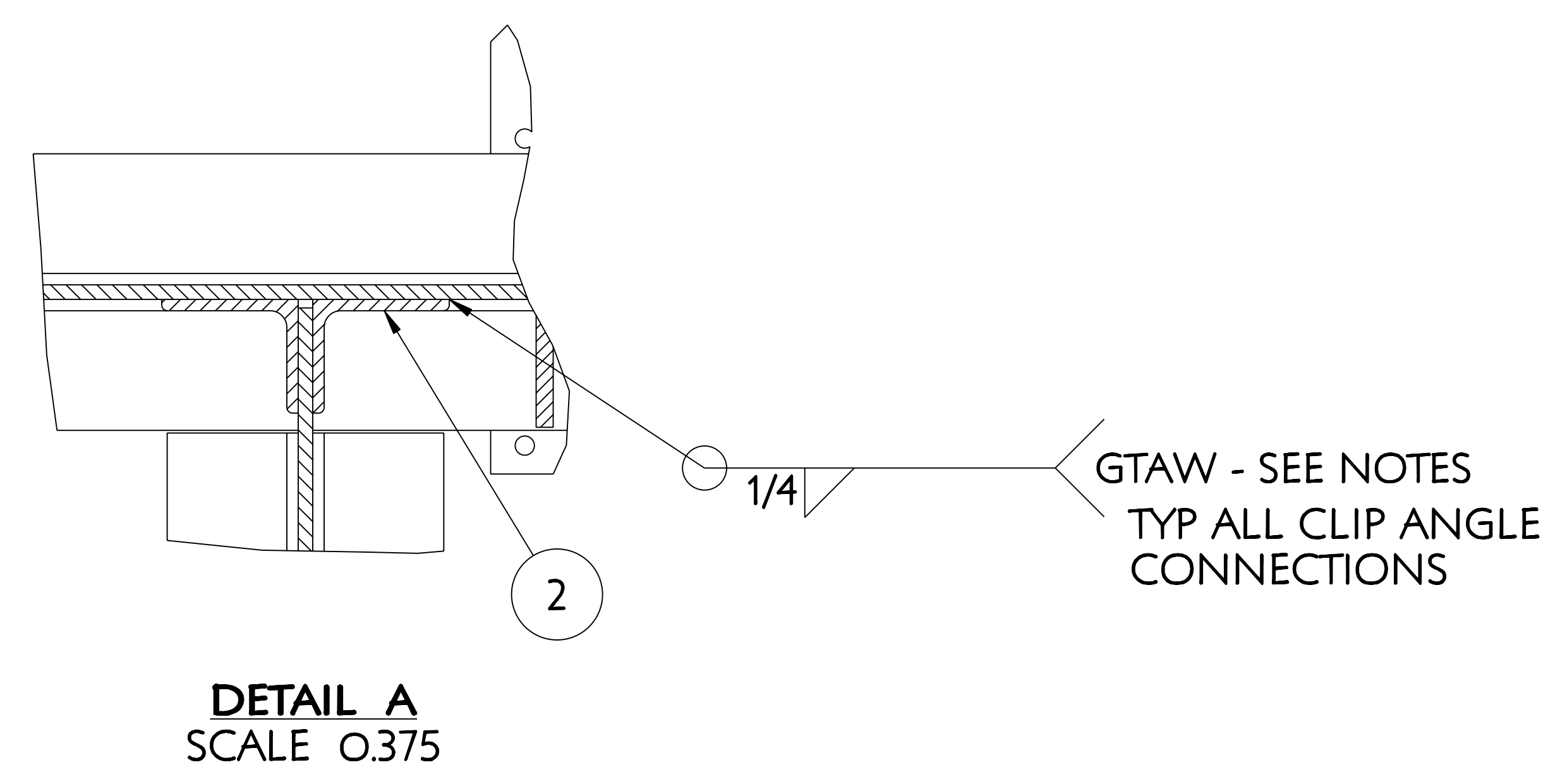
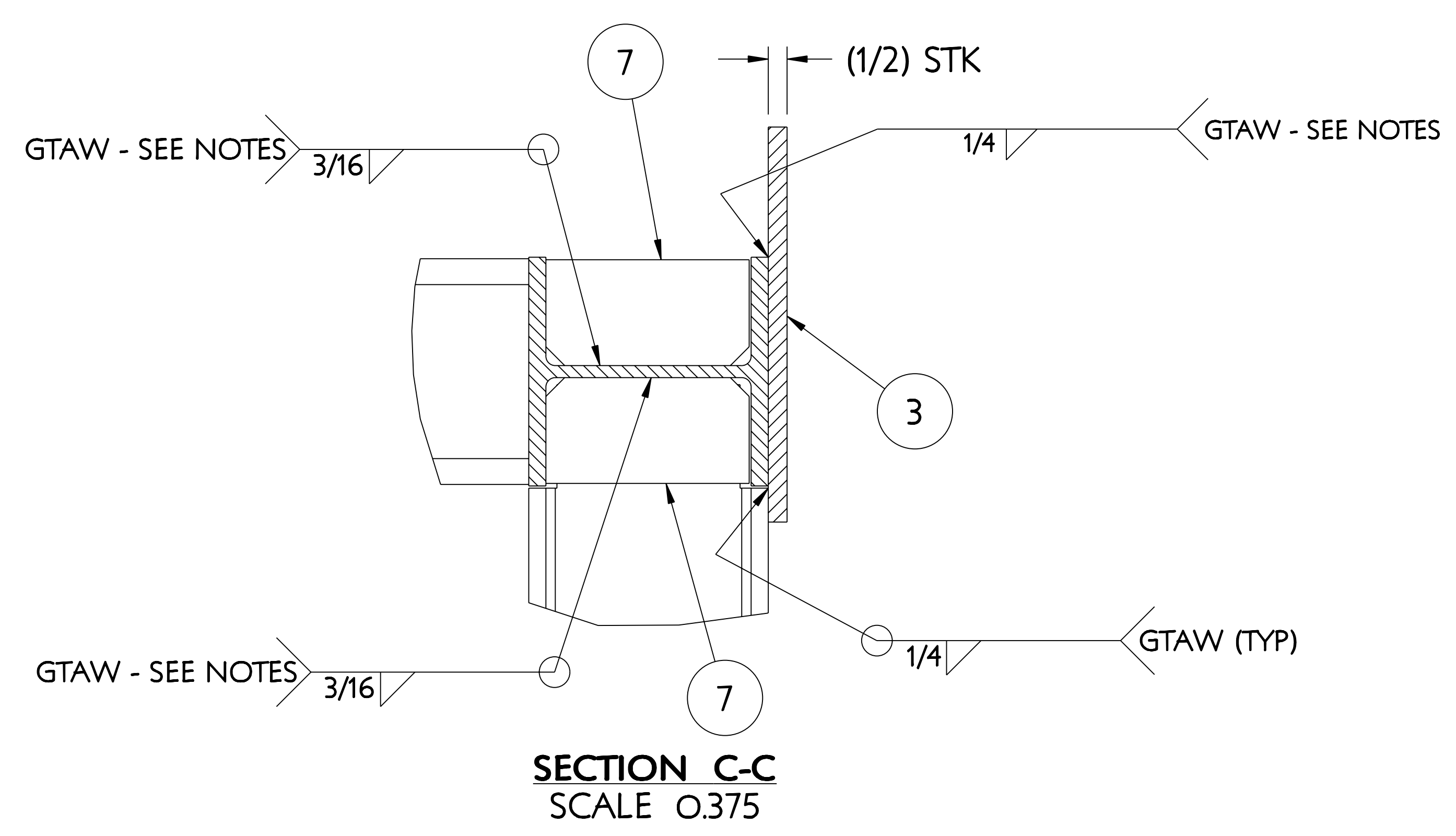


NO.	REVISION	BY	CH	SUP	APPROVED	DATE



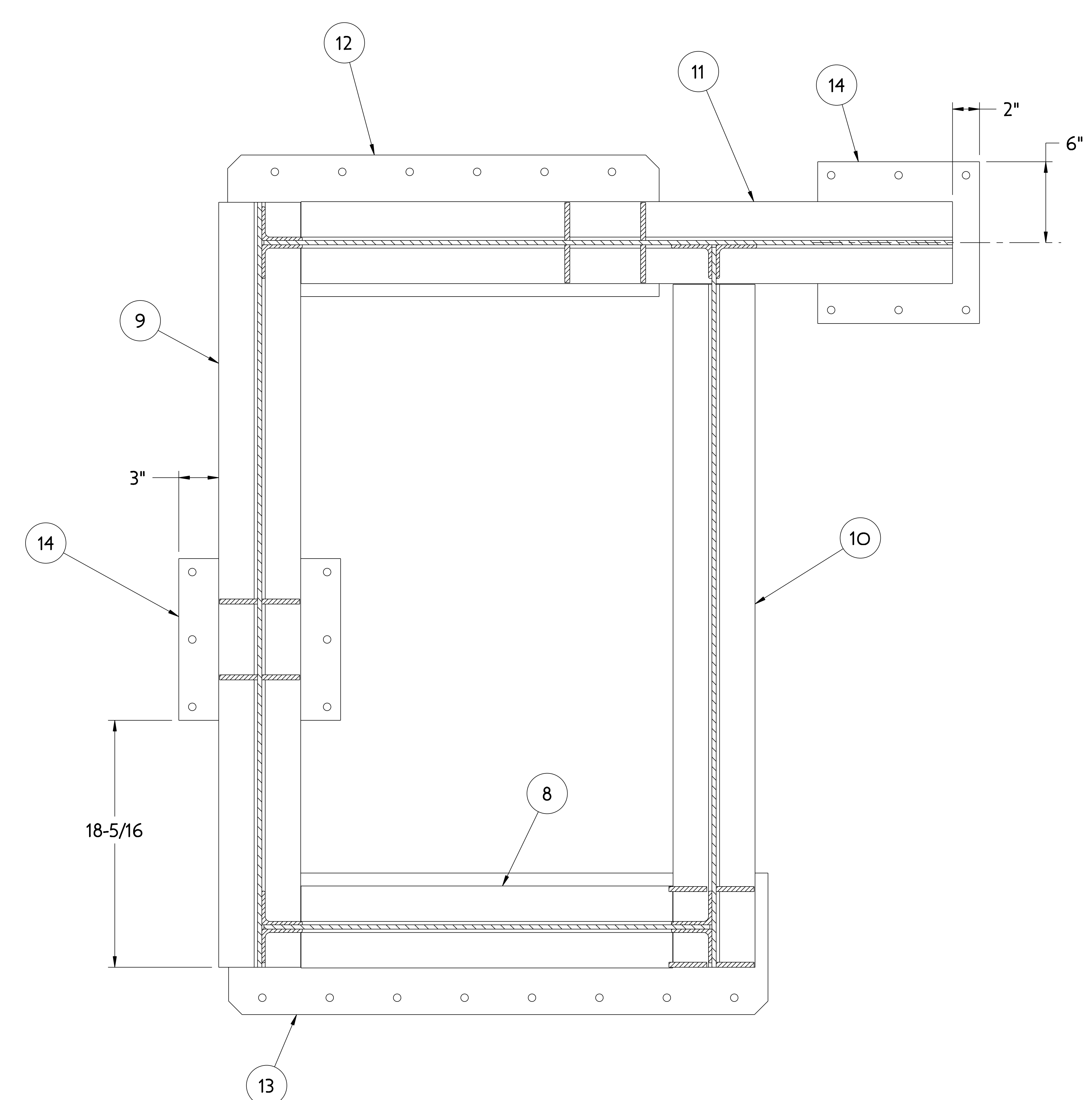
RELEASE LEVEL: WIP
DWG VERSION NO: 26

WEIGHT	1160.8 lbs
MODEL NAME	SE186-330-01
WELDING ENGINEER	

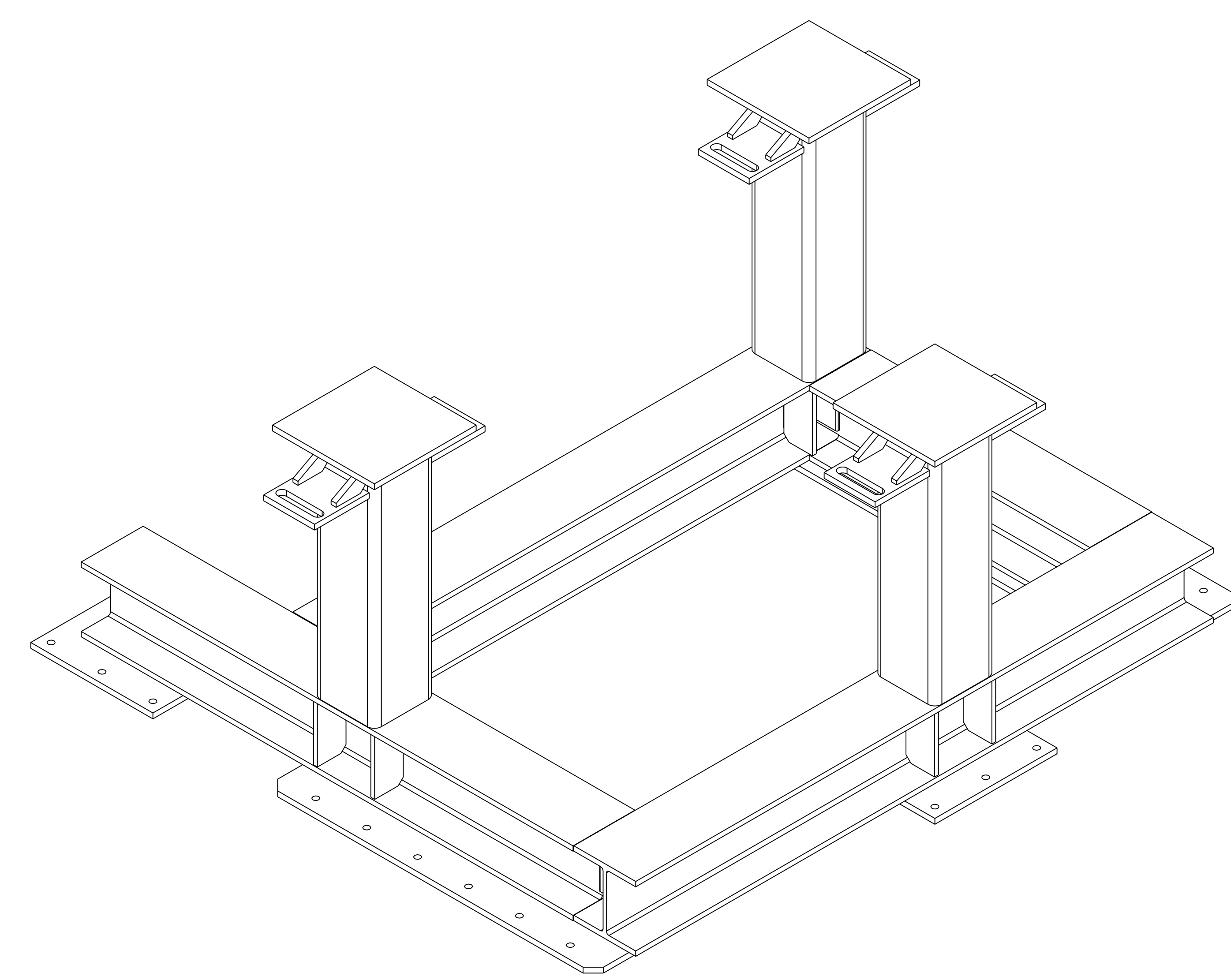
COMPUTER GENERATED DRAWING MANUAL CHANGES NOT PERMITTED Pro E	CENTRAL FILES: UNLESS OTHERWISE SPECIFIED DIMENSIONS ARE IN INCHES MACHINE SURFACES BREAK SHARP EDGES .005/.020	PRINCETON PLASMA PHYSICS LABORATORY NATIONAL COMPACT STELLARATOR EXPERIMENT STELLARATOR CORE TOOLING DESIGN & FABRICATION MCWF SUPPORT CART WELDMENTS
DO NOT VERIFY INFORMATION BY SCALING DRAWING	TOLERANCES NON-CUMULATIVE DECIMAL-INCH FRACTIONS .XX +/- .030 .XXX +/- .005 ANGULAR +/- 0°15'	DSN: J. RUSHINSKI 8-2-2007 CHK: M. COLE 8-2-2007 ENGR: T. BROWN 8-2-2007 SUPV: J. SIEGEL 8-2-2007
NEXT ASSEMBLY		DRAWING NO: SE186-330 SHEET 2 OF 3 REV D, 10

NCSX-SE186-330

NO.	REVISION	BY	CH	SUP	APPROVED	DATE



SECTION D-D - O2 ASSEMBLY
REFER TO O1 ASSEMBLY FOR ADDITIONAL
DIMENSIONS AND WELDS NOT SHOWN HERE



O2 ASSEMBLY
REFERENCE ISOMETRIC

FOR NOTES AND BILL OF MATERIAL SEE SHEET 1

RELEASE LEVEL: WIP
DWG VERSION NO: 26

WEIGHT	1160.8 lbs
MODEL NAME	SE186-330-01
WELDING ENGINEER	

COMPUTER GENERATED DRAWING MANUAL CHANGES NOT PERMITTED Pro E	CENTRAL FILES: UNLESS OTHERWISE SPECIFIED	PRINCETON PLASMA PHYSICS LABORATORY NATIONAL COMPACT STELLARATOR EXPERIMENT
DO NOT VERIFY INFORMATION BY SCALING DRAWING	DIMENSIONS ARE IN INCHES MACHINE SURFACES BREAK SHARP EDGES .005/.020	STELLARATOR CORE TOOLING DESIGN & FABRICATION MCWF SUPPORT CART WELDMENTS
TOLERANCES NON-CUMULATIVE	DECIMAL-INCH FRACTIONS	DSN: L. MORRIS 8-2-2007 DRAWING NO:
NEXT ASSEMBLY	.X +/- .100 0°-120° +/- .125 .XX +/- .030 12°-12° +/- .125 .XXX +/- .005 72°-120° +/- .125 ANGULAR +/- .0°-15° OVER 120° +/- .125	CHK: M. COLE 8-2-2007 ENGR: T. BROWN 8-2-2007 SUPV: J. SIEGEL 8-2-2007
		SE186-330 SHEET 3 OF 3 REV D, 10

NCSX-SE186-330