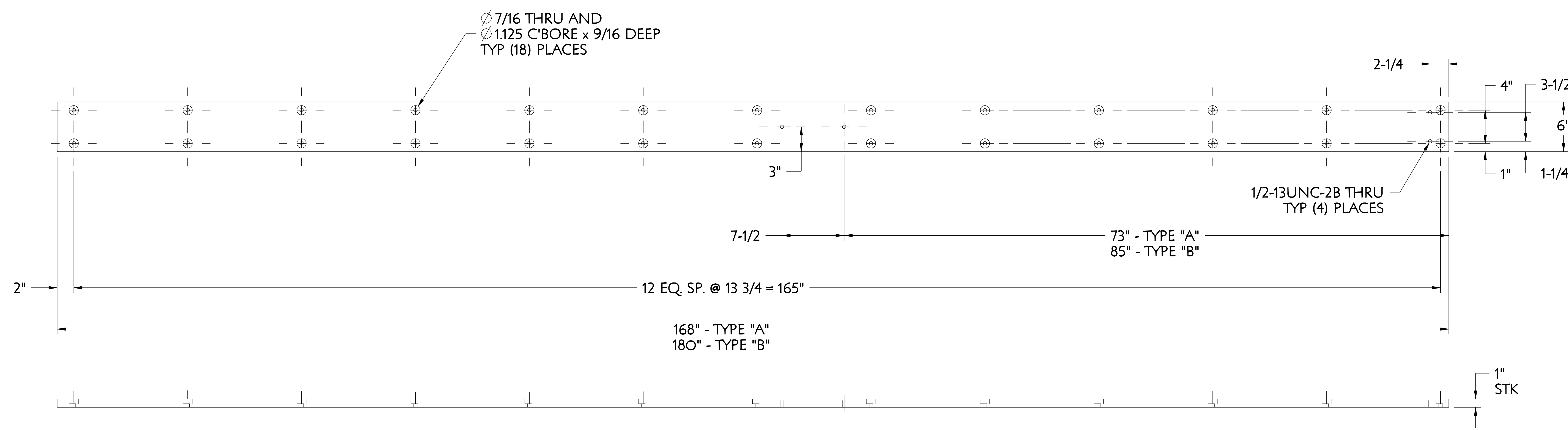
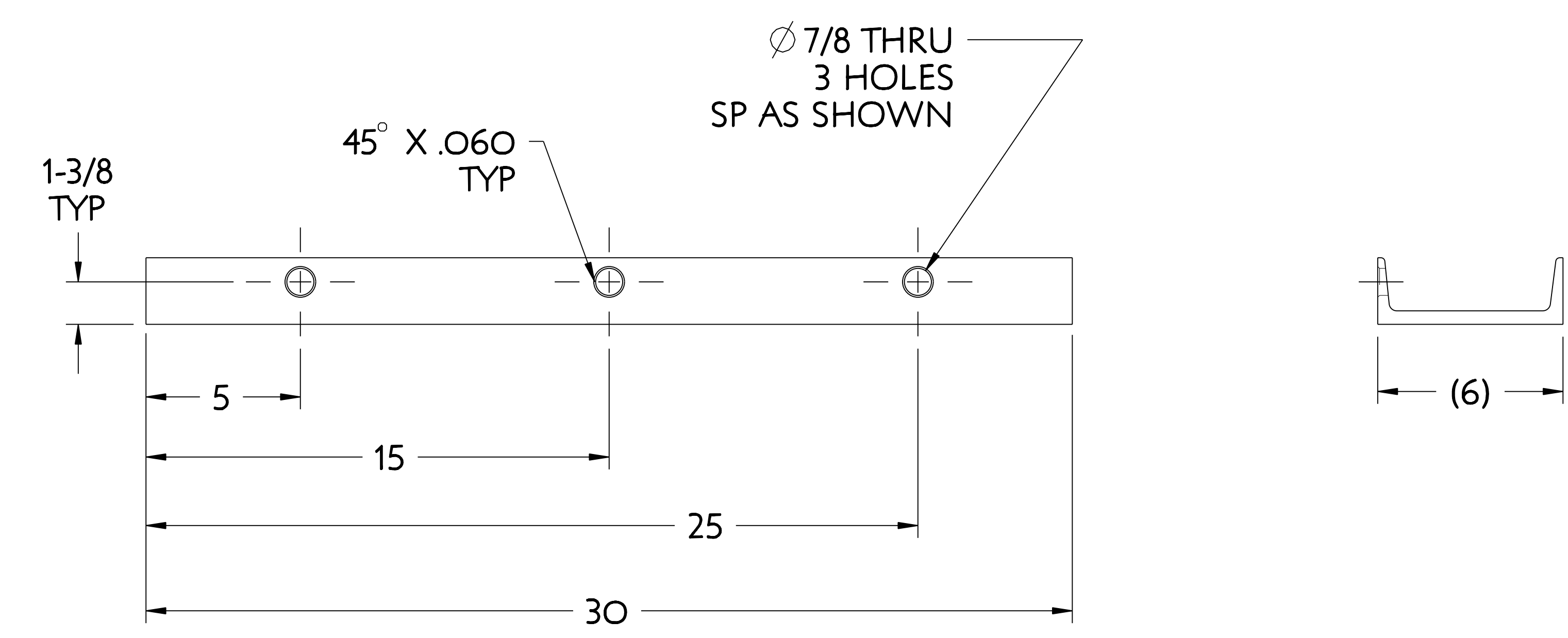


| | | | | | | |
|-----|----------|----|----|-----|----------|------|
| NO. | REVISION | BY | CH | SUP | APPROVED | DATE |
| | | | | | | |



- 1 FLOOR MOUNTED ROLLER TRACK - TYPE "A"
- 7 FLOOR MOUNTED ROLLER TRACK - TYPE "B"

MAKE FROM 1 X 6 BAR



ANTI TIP CHANNEL
MAKE FROM 6" X 13.0# CHANNEL

| PART NO. | DRAWING/MODEL NO | NOMENCLATURE OR DESCRIPTION | MATERIAL | QTY RECD |
|----------|------------------|---------------------------------------|--------------|----------|
| 7 | SE186-331-7 | FLOOR MOUNTED ROLLER TRACK - TYPE "B" | ASTM A36 | |
| 6 | SE186-331-6 | SUPPORT GUSSET | ASTM A36 | |
| 5 | SE186-331-5 | STOP BLOCK | ASTM A36 | |
| 4 | SE186-331-4 | CLAMPING THREADED BOSS | CARBON STEEL | |
| 3 | SE186-331-3 | FLOOR BOLTING CLIP | CARBON STEEL | |
| 2 | SE186-331-2 | ANTI-TIP CHANNEL | CARBON STEEL | |
| 1 | SE186-331-1 | FLOOR MOUNTED ROLLER TRACK - TYPE "A" | CARBON STEEL | |

| PARTS LIST | | | | |
|---|------------------|---|----------|------------------|
| PART NO. | DRAWING/MODEL NO | NOMENCLATURE OR DESCRIPTION | MATERIAL | QTY RECD |
| COMPUTER GENERATED DRAWING. MANUAL CHANGES NOT PERMITTED. | | | | |
| CENTRAL FILES: | | PRINCETON PLASMA PHYSICS LABORATORY | | |
| UNLESS OTHERWISE SPECIFIED | | PRINCETON UNIVERSITY | | |
| DIMENSIONS ARE IN INCHES | | NATIONAL COMPACT STELLARATOR EXPERIMENT | | |
| MACHINE SURFACES | | STELLARATOR CORE | | |
| BREAK SHARP EDGES .005/.020 | | TOOLING DESIGN & FABRICATION | | |
| TOLERANCES NON-CUMULATIVE | | MCWF SUPPORT CART MISCELLANEOUS DETAILS | | |
| DECIMAL-INCH FRACTIONS | | DSN: J. RUSHINSKI | 8-2-2007 | DRAWING NO: |
| NEXT ASSEMBLY | | CHK: M. COLE | 8-2-2007 | SE186-331 |
| .XX +/- .030 | | ENGR: T. BROWN | 8-2-2007 | |
| .XXX +/- .005 | | SUPV: J. SIEGEL | 8-2-2007 | SHEET 1 OF 2 |
| ANGULAR +/- .015 | | | | REV 0 |

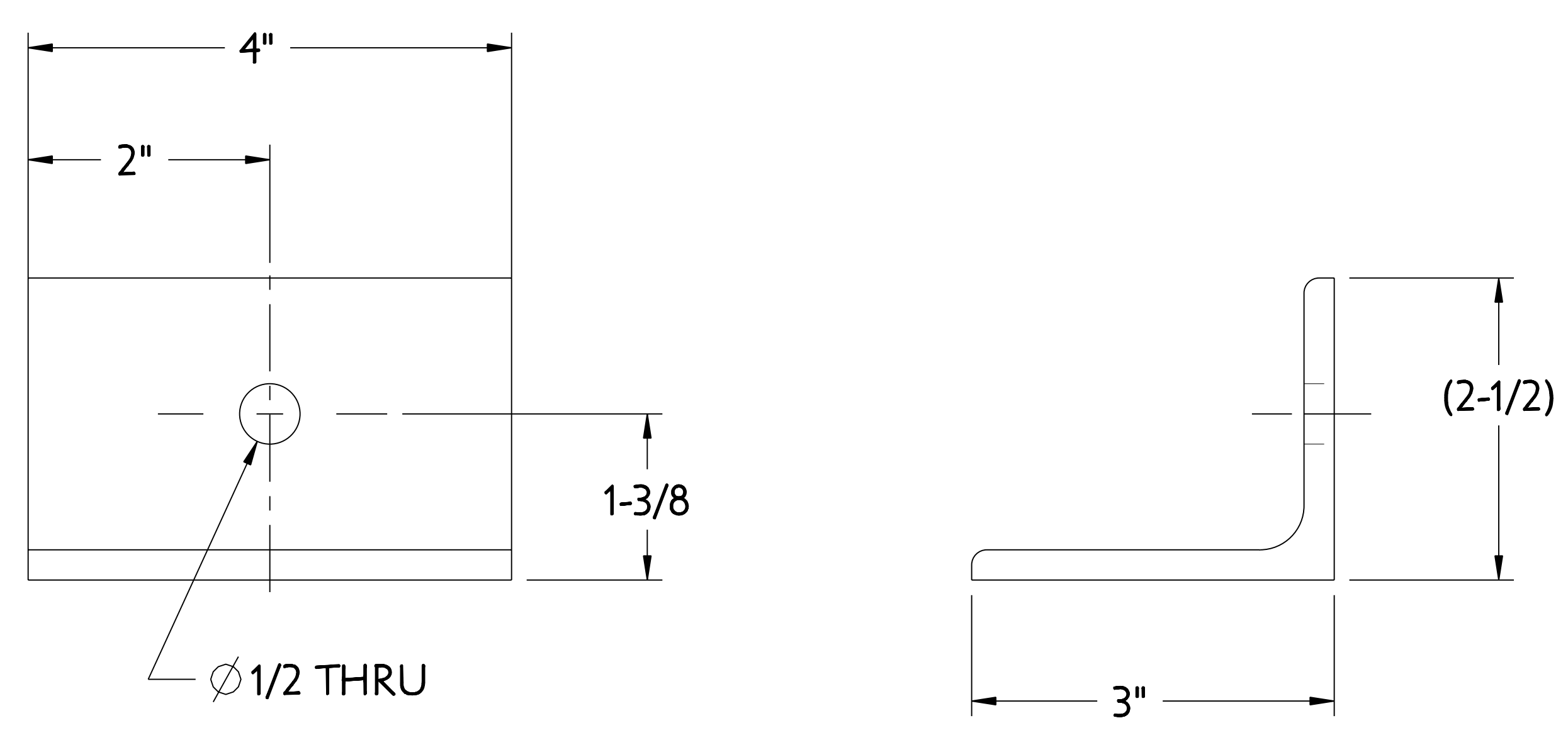
RELEASE LEVEL: WIP
 DWG VERSION NO: 11

| | |
|------------------|-------------|
| WEIGHT | 287.4 lbs |
| MODEL NAME | SE186-331-1 |
| WELDING ENGINEER | |

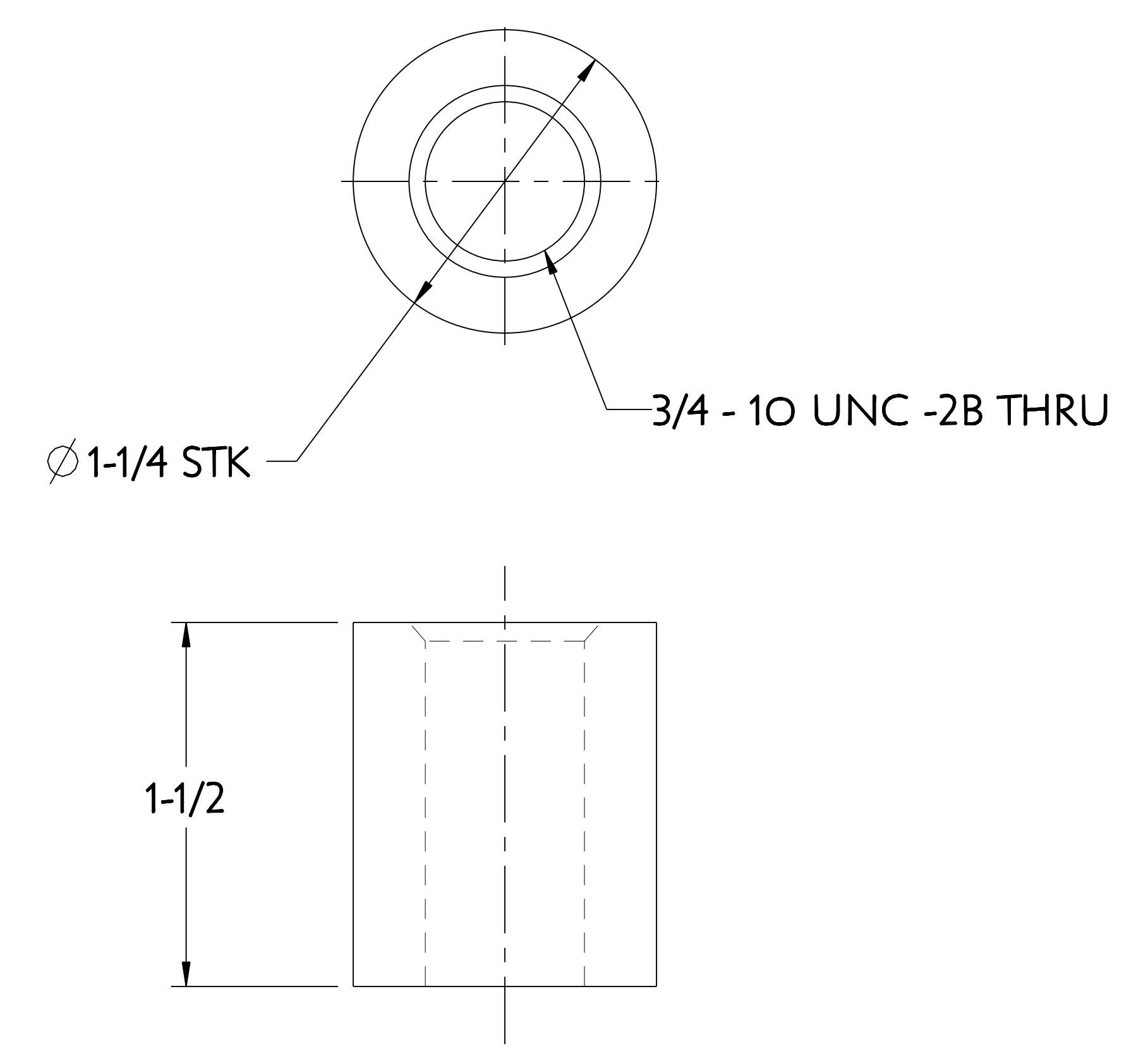
NCSX-SE186-331

NCSX-PART-FORMAT.E

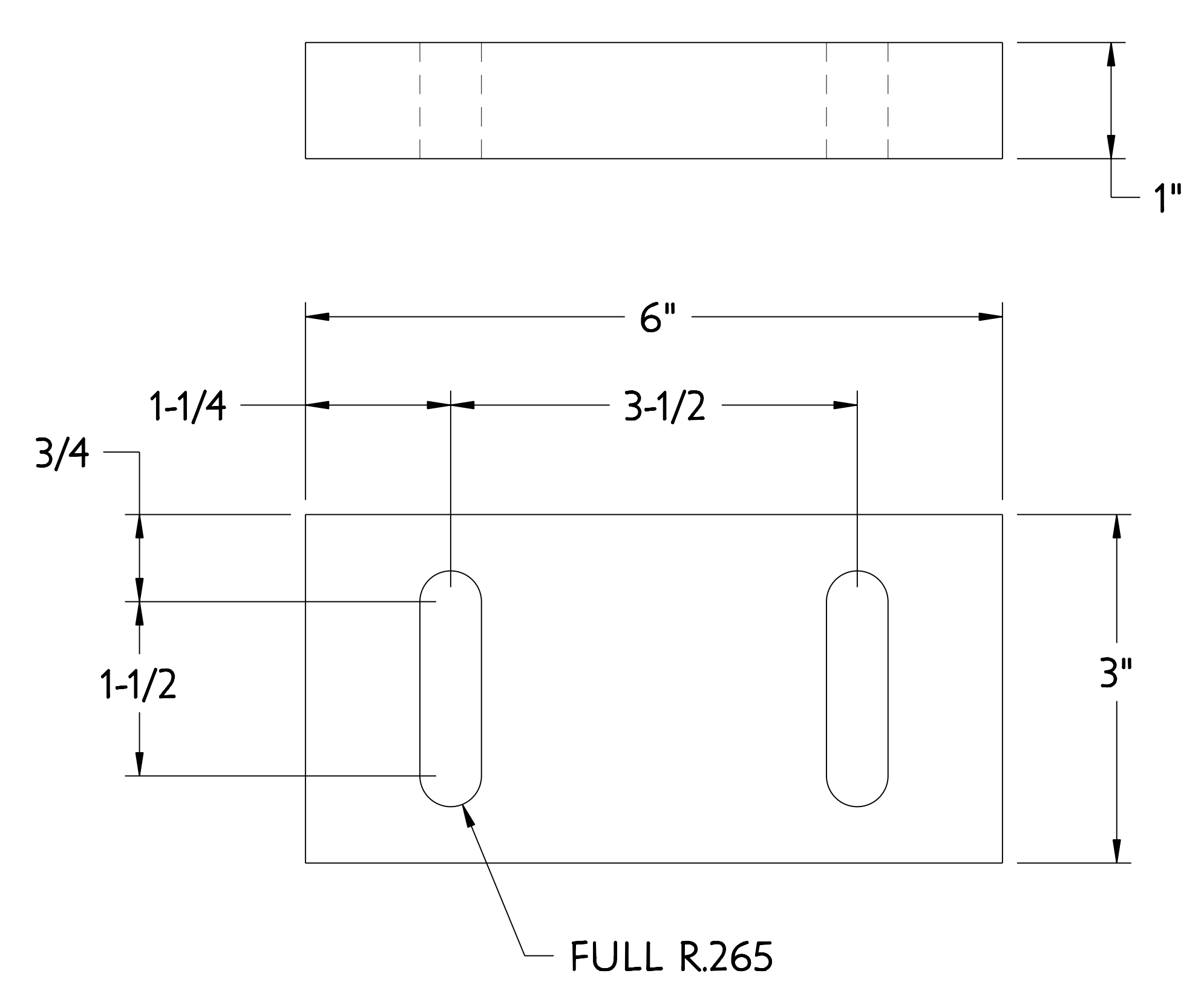
| | | | | | | |
|-----|----------|----|----|-----|----------|------|
| NO. | REVISION | BY | CH | SUP | APPROVED | DATE |
| | | | | | | |



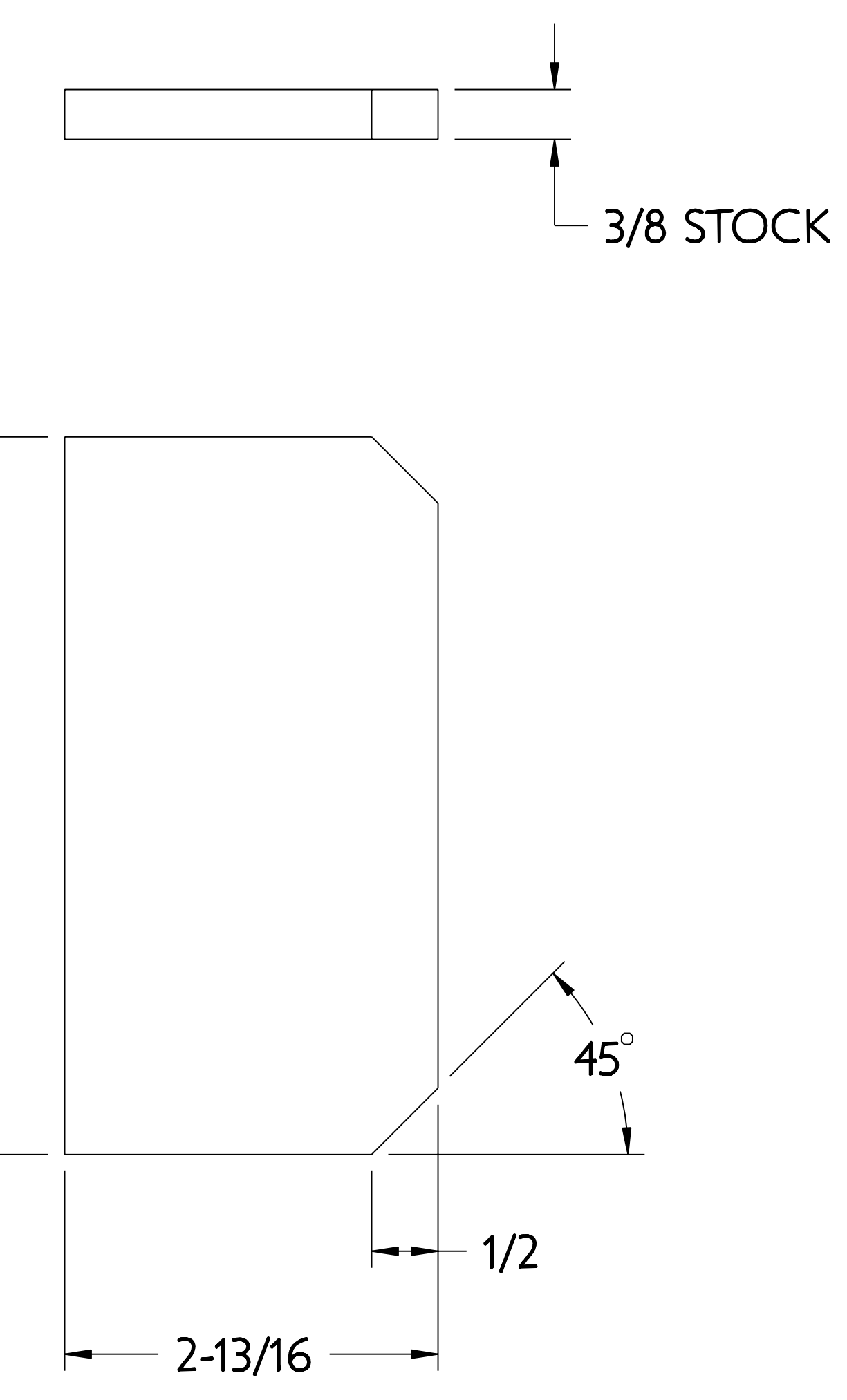
3
FLOOR BOLTING CLIP
MAKE FROM 3" X 2 1/2" ANGLE



4
CLAMPING THREADED BOSS
MAKE FROM 1 1/4 Ø STK



5
STOP BLOCK
MAKE FROM 3 x 6 x 1" BAR



6
SUPPORT GUSSET

FOR NOTES AND BILL OF MATERIAL SEE SHEET 1

| | | | | | |
|---|--|---|----------|--------------|---------|
| COMPUTER GENERATED DRAWING MANUAL CHANGES NOT PERMITTED Pro E | CENTRAL FILES: | PRINCETON PLASMA PHYSICS LABORATORY | | | |
| | UNLESS OTHERWISE SPECIFIED | NATIONAL COMPACT STELLARATOR EXPERIMENT | | | |
| DO NOT VERIFY INFORMATION BY SCALING DRAWING | DIMENSIONS ARE IN INCHES MACHINE SURFACES UNLESS OTHERWISE SPECIFIED | STELLARATOR CORE TOOLING DESIGN AND FABRICATION MCWF SUPPORT CART MISCELLANEOUS DETAILS | | | |
| NEXT ASSEMBLY | TOLERANCES NON-CUMULATIVE | DSN: J. RUSHINSKI | 8-2-2007 | DRAWING NO: | |
| | DECIMAL-INCH FRACTIONS | CHK: M. COLE | 8-2-2007 | SE186-331 | |
| WELDING ENGINEER | .XX +/- .030 0°-120° +/- 1.0° .XXX +/- .005 120°-120° +/- 1.0° ANGULAR +/- 0°-15° OVER 120° +/- 1.0° | ENGR: T. BROWN | 8-2-2007 | SHEET 2 OF 2 | REV 0.9 |

RELEASE LEVEL: WIP
 DWG VERSION NO: 4

NCSX-SE186-331