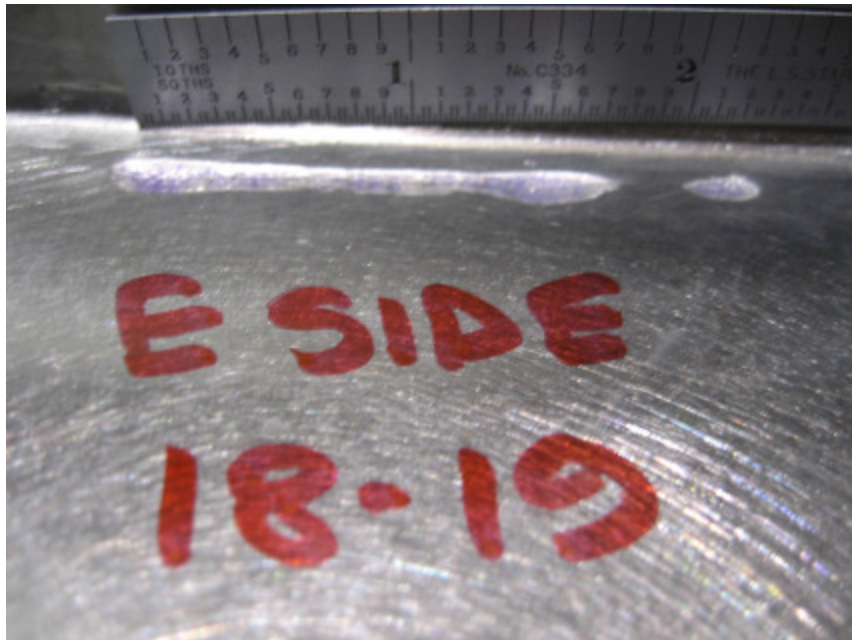




Tool Gouges on E side Long Leg near radius



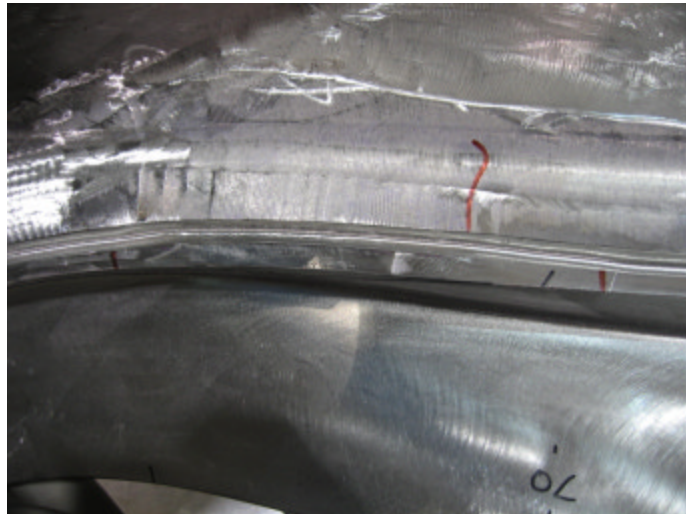


Tool Gouges on E side Long Leg near radius





NC20920 – B3 Visual Review

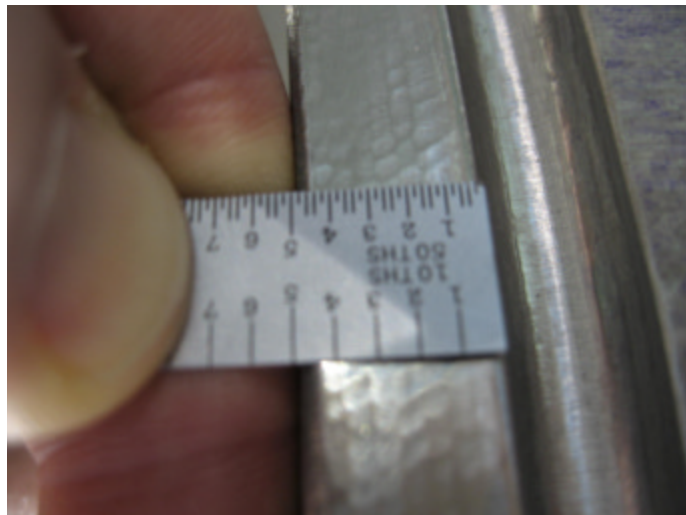


.400" distance from short leg to VPI groove (sheet 2, zone G7)

There is an area on the Datum D side from T hole 81 to 86 that checks as small as .300". The transition has been blended smooth.

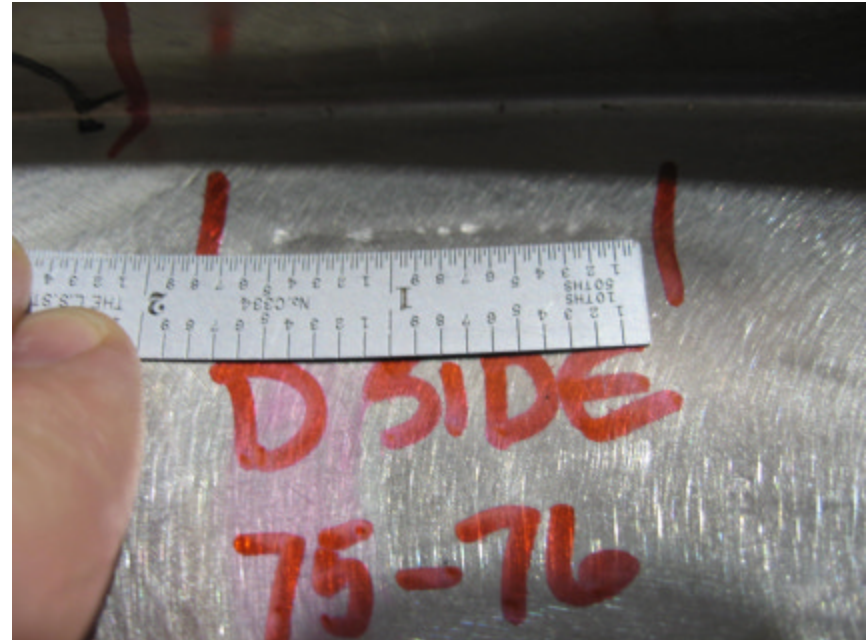
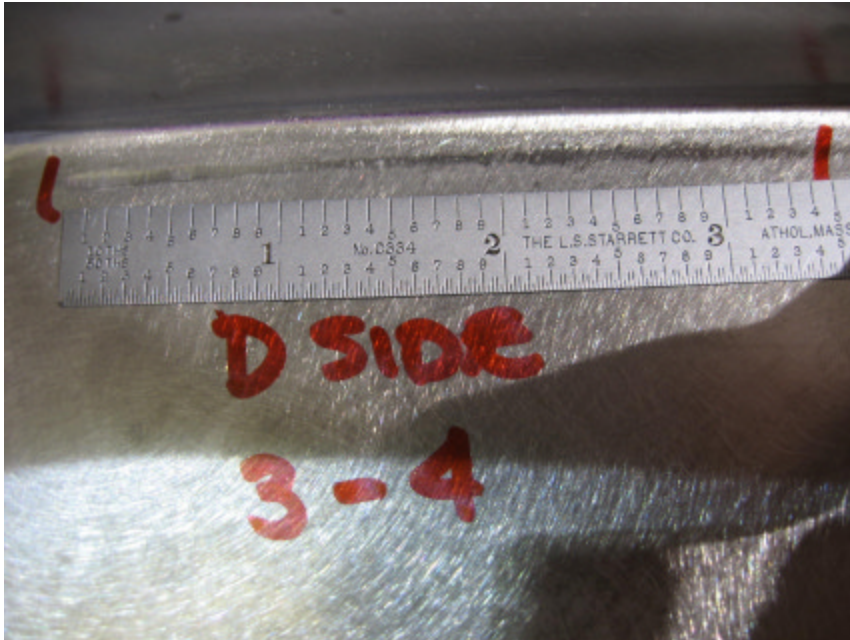
There is an area on the Datum D side from T hole 70 to 73 that checks as large as .506".

(SEE NC20917 step 110)





Tool Gouges on D side Long Leg near radius



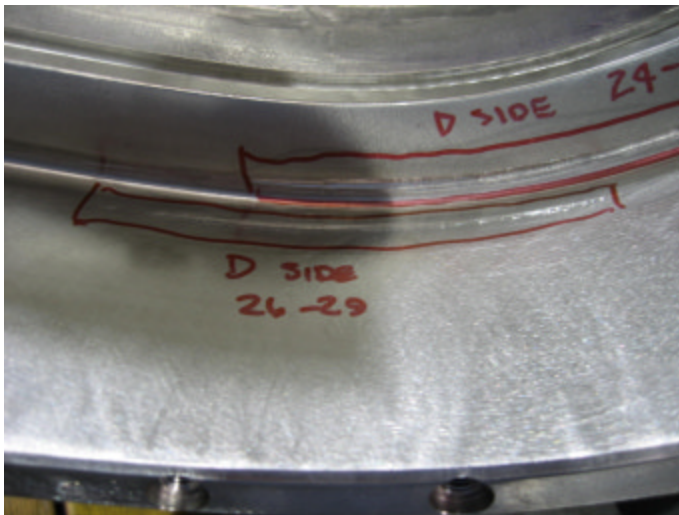
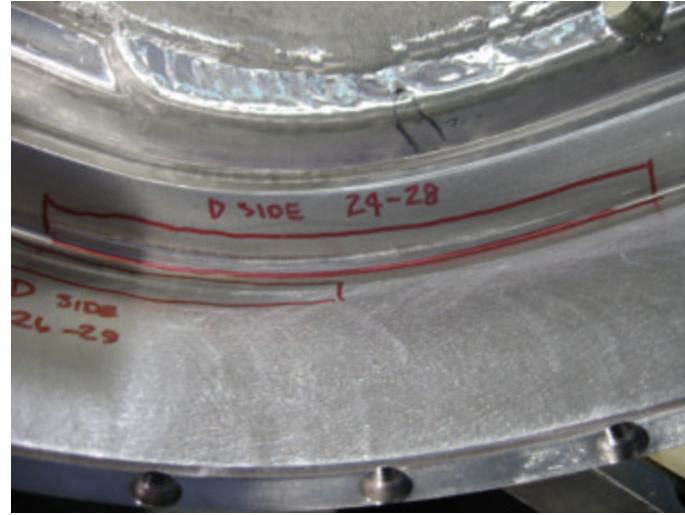
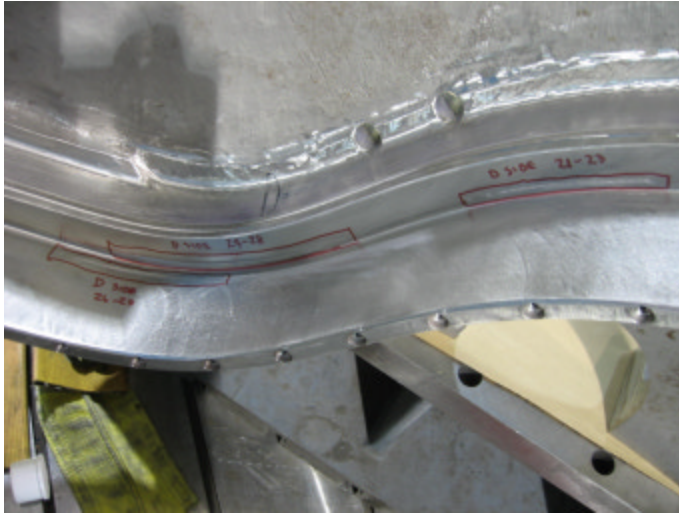


Tool Gouges on D side Long and Short Legs near radius



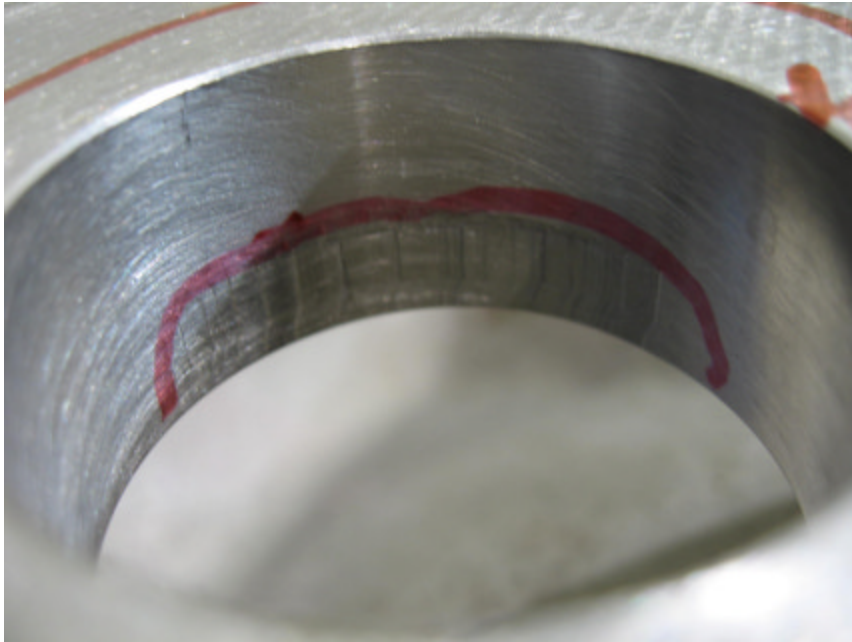


Tool Gouges on D side Long and Short Legs near radius





NC20920 – B3 Visual Review



Oversize area in hole #27 in Datum E flange. (reported on NC20917 step 730)



Undercut areas adjacent to .12" radius of Long Leg

Datum E Side

E93 – E4 (.010" - .017")

E53 – E55 (.010" - .011")

Datum D Side

D42 – D45 (.010" - .024")

D58 – D60 (.010" - .011")

D62 – D66 (.010" - .015")

D73 – D75 (.010" - .025")

D84 – D88 (.010" - .022")