

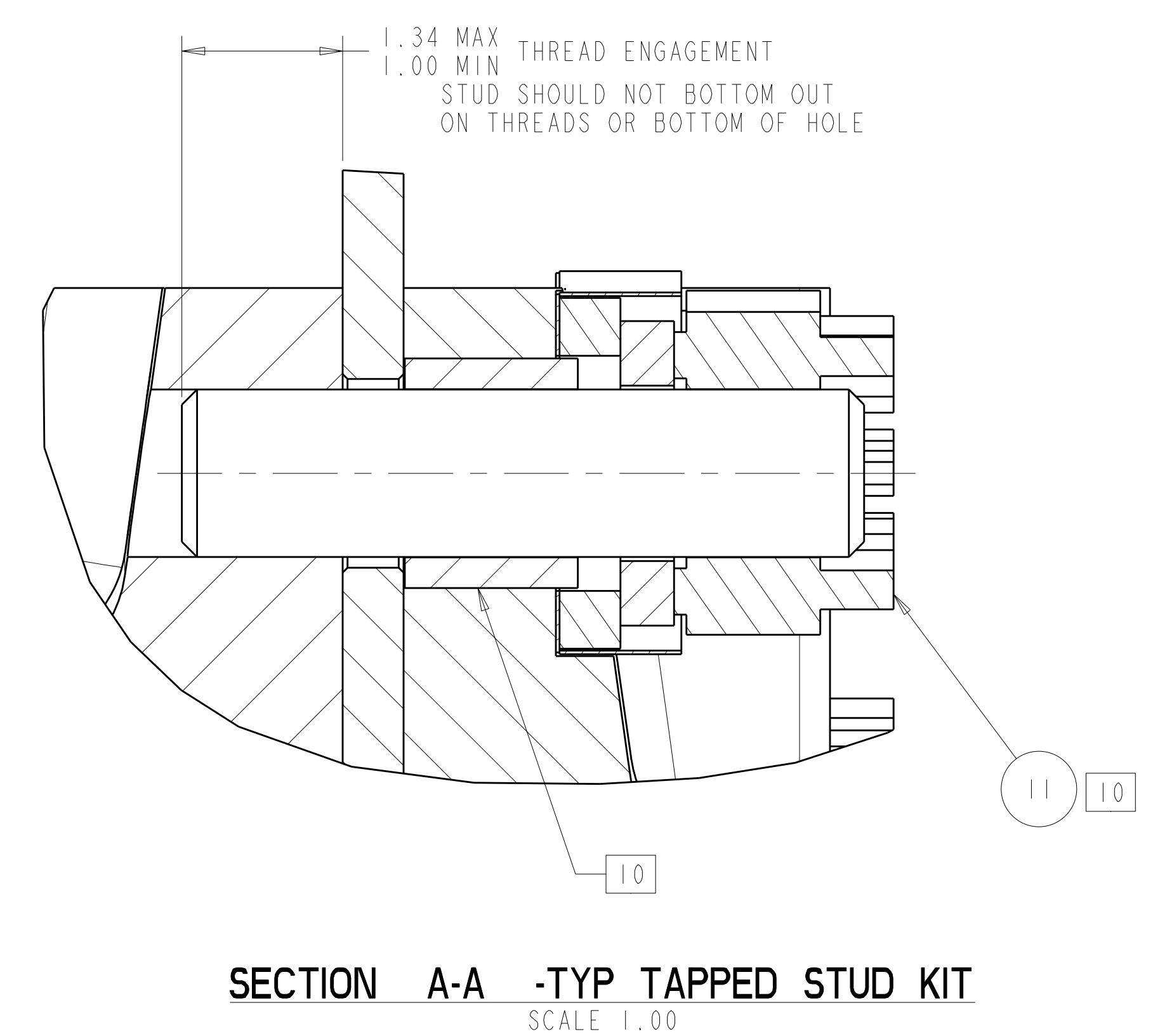
- NOTES:
- DRAWING PREPARED IN ACCORDANCE WITH ASME Y14.8M-1996.
 - INTERPRET DIMENSIONS AND TOLERANCES PER ANSI Y14.5M-1994.
 - DIMENSIONS ARE IN INCHES.
 - DRAWING DEPICTS FINAL MACHINED STATE OF ASSEMBLY DEFINED BY PRO/ENGINEER FILE SE140-103.ASM.
 - UNLESS OTHERWISE SPECIFIED, DIMENSIONS ARE RELATED TO DATUM A- (PRIMARY X-Y PLANE, TOP) DATUM B- (SECONDARY Y-Z PLANE, SIDE) DATUM C- (TERTIARY X-Z PLANE, FRONT)
 - DIMENSIONS APPLY AT TEMPERATURE OF 20-30°C (68-86°F).
 - DIMENSIONS AND TOLERANCES EXCLUDE PROCESS MATERIAL ALLOWANCES WHICH MAY ADD MASS.
 - APPROXIMATE WEIGHT = 24,265 LBS
 - SEE LATEST REVISION OF SPECIFICATION NCSX-CSPEC-141-03 FOR ADDITIONAL REQUIREMENTS.
 - MACHINE BUSHING OD AFTER MATCHING ALIGNMENT WITH COORESPONDING HOLE ON MATING FLANGE. SEE DRAWING SE140-190 FOR ADDITIONAL INFORMATION ON STUD KITS
 - SHIMS TO BE CUSTOM FIT PRIOR TO INSTALLATION. SEE DWG SE140-046 FOR WELDING AND OTHER INFORMATION.
 - LOCATE WING BLADDERS, F/N 5, APPROX AS SHOWN AND SECURE WITH ADHESIVE, F/N 13, FOLLOWING MANUFACTURERS' DIRECTIONS.
 - TO BE INSTALLED IF WING DEFLECTION EXCEEDS MAXIMUM ALLOWED TOLERANCE VALUES AFTER WELDING.

TOP VIEW
SCALE 0.125

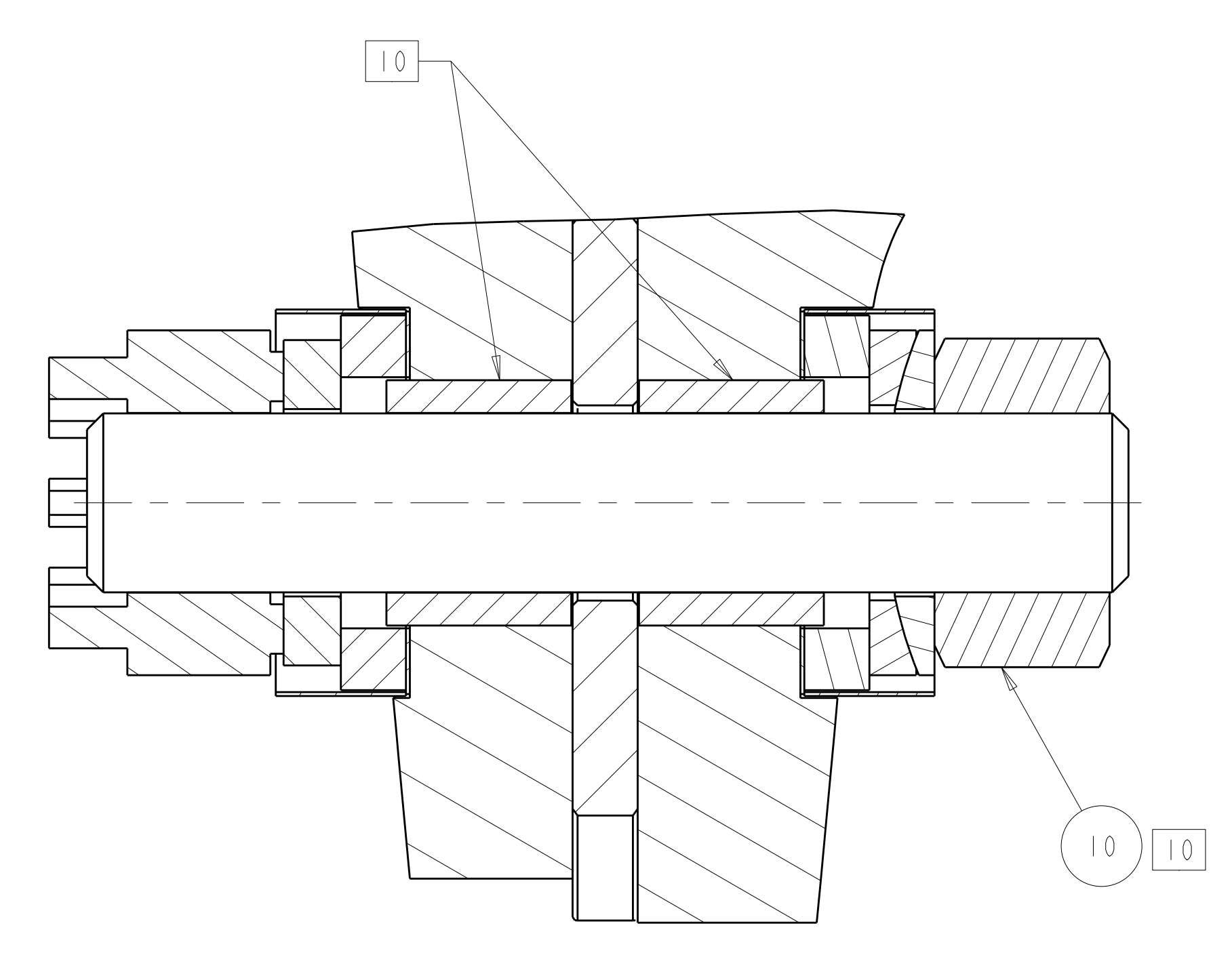
BOTTOM VIEW
SCALE 0.125

-1 MCWF HALF PERIOD ASSY
SCALE NOTED

PRELIMINARY
11-08-2007



SECTION A-A -TYP TAPPED STUD KIT
SCALE 1.00



SECTION B-B -TYP THRU STUD KIT
SCALE 1.00

REV	CAGE CODE	PART OR IDENTIFYING NO	NOMENCLATURE OR DESCRIPTION	MATERIAL	SPECIFICATION	FIND NO
13	AR	-14	FILLER	GREAT STUFF		16
12	AR	-13	ADHESIVE	CTD-540	COMPOSITE TECHNOLOGY DEVELOPMENT, INC LAFAYETTE, CO 80026 303-664-0394 WWW.CTD-MATERIALS.COM	15
13	AR	SE140-060	WING SUPPORT			14
10	AR	SE140-190-2	MCWF FLANGE TAPPED STUD KIT			13
10	AR	SE140-190-1	MCWF FLANGE THRU STUD KIT			12
10	54	SE140-190-4	MCWF FLANGE TAPPED STUD KIT			11
10	1	SE140-190-3	MCWF FLANGE THRU STUD KIT			10
37		SE140-056	SHIM PUCK			9
11	1	SE140-053	BC INBOARD SHIM			8
11	1	SE140-052	AB INBOARD SHIM			7
11	67	SE140-040	SHIM PLATE			6
4		SE140-050	WING BLADDER			5
1		SE140-103	MCWF TYPE "C" ASSY			4
1		SE140-102	MCWF TYPE "B" ASSY			3
1		SE140-101	MCWF TYPE "A" ASSY			2
AR		SE140-003	MODULAR COIL HALF PERIOD ASSY			1

REV	DESCRIPTION	BY	DATE	CHK	DEPT	DATE	PE	REQ	DATE	ORNL	DOE	DATE
0	ORIGINAL ISSUE	GM	11/07	MC		11/07						

SCALE NOTED
 TOLERANCES UNLESS OTHERWISE SPECIFIED
 FRACTIONS ± .01
 XX DECIMALS ± .01
 XXX DECIMALS ± .005
 ANGLES ±0°15'
 BREAK SHARP EDGES .06 MAX
 FINISH .125 UNLESS OTHERWISE SPECIFIED

DES: D WILLIAMSON 11/2007
 DRW: G LOVETT 11/2007
 CHK: M COLE 11/2007
 SECT: :
 DEPT: :
 PE: :
 CR: :
 PJ: :
 RD: :
 PPPL DRFT J SEIGEL 11/2007

UT-BATTELLE
 NATIONAL COMPACT STELLARATOR EXPERIMENT
 MODULAR COILS ASSEMBLY
 1/2 FIELD PERIOD

PPPL DRFT J SEIGEL 11/2007
 VERSION NO. 21+
 PLANT ORNL
 BLDG 5700
 FL 3
 SHT OF 2
 TYPE A
 CLASS U
 REV 0

Oak Ridge National Laboratory managed for the DEPARTMENT OF ENERGY under U.S. GOVERNMENT contract DE-AC05-00OR22725 UT-BATTELLE, LLC. Oak Ridge, Tennessee

SE140-003

NO REPRESENTATION OR WARRANTY, EXPRESSED OR IMPLIED, IS MADE AS TO THE ACCURACY, COMPLETENESS OR USEFULNESS OF THE INFORMATION OR STATEMENTS CONTAINED IN THESE DRAWINGS, OR THAT THE USE OR DISCLOSURE OF ANY INFORMATION, APPARATUS, METHOD OR PROCESS DISCLOSED IN THESE DRAWINGS MAY NOT INFRINGE PRIVATE RIGHTS OF OTHERS. NO LIABILITY IS ASSUMED WITH RESPECT TO THE USE OF, OR FOR DAMAGES RESULTING FROM THE USE OF, ANY INFORMATION, APPARATUS, METHOD OR PROCESS DISCLOSED IN THESE DRAWINGS. DRAWINGS MADE AVAILABLE FOR INFORMATION TO BIDDER ARE NOT TO BE USED FOR OTHER PURPOSES, AND ARE TO BE RETURNED UPON REQUEST OF THE FORWARDING CONTRACTOR.

P THIS DRAWING PRODUCED ON PRO-ENGINEER

REV	DESCRIPTION	BY	DATE	CHK	DEPT	DATE	PE	REQ	DATE	ORNL	DOE	DATE
0	ORIGINAL ISSUE	GM	11/07	MC		11/07						