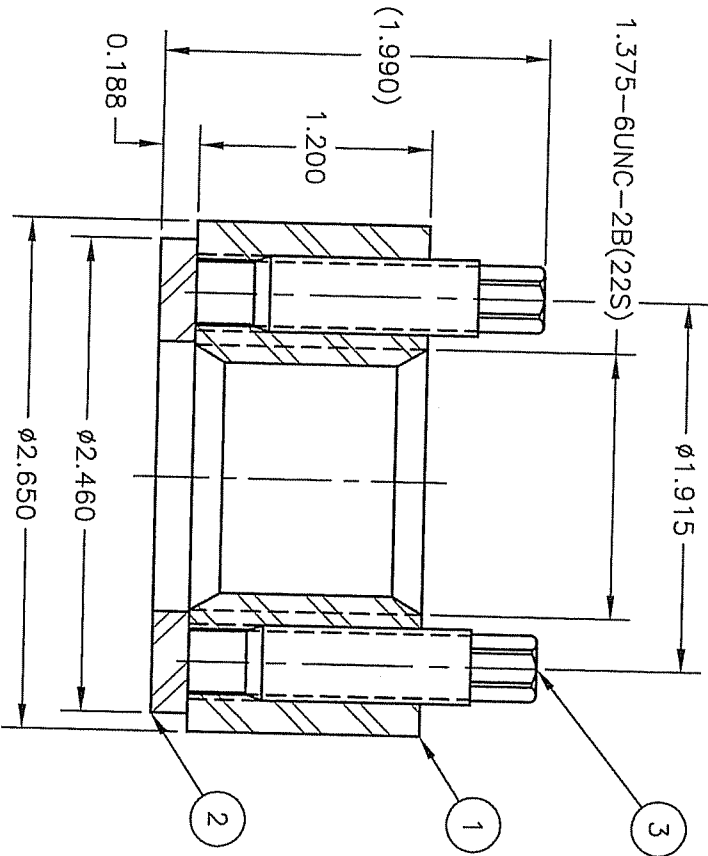
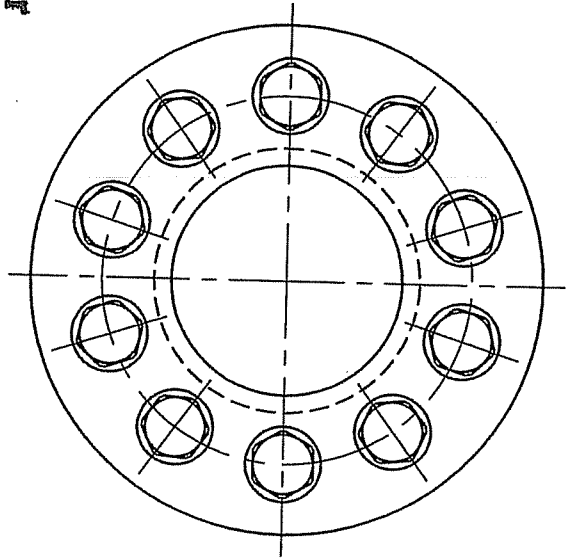


Manufactured Under
U.S. Patent RE33490



PROPRIETARY
PROPERTY OF SUPERBOLT INC

- NOTES:
1. UNLESS OTHERWISE SPECIFIED, ALL DIMENSIONS ARE IN INCHES.
 2. ALL DIMENSIONS ARE FOR REFERENCE ONLY.
 3. STAMP PER 85-100-00.

- ITEM/MATERIAL:
1. NUT BODY= 64-193-00
 2. WASHER= 63-111-00, 70-302-00
 3. JACKBOLTS= 63-111-00, 70-404-00

PRELOAD= 75,000 LBS
TORQUE= TBD (SUPERBOLT JL-G)

ITEM	PART NUMBER	QTY	DESCRIPTION	WGHT
3	JB-01997	10	JB, PINTLE, M10.0X1.25X1.458, 63, 5/16H	0.04
2	W-04616	1	WASHER, 1.400X2.460X0.188, 63	0.18
1	B-05556	1	NUT, 1.375-6, 2.650X1.200, 64	0.98

THIRD ANGLE PROJECTION
TOLERANCES PER ASME Y14.5M-1994, UNLESS OTHERWISE SPECIFIED.
LINEAR DIMENSIONS (INCHES)
SURFACE FINISHES
UNLESS OTHERWISE SPECIFIED

MANUFACTURED UNDER U.S. PATENT # RE33490
THIS PRINT IS LOANED TO THE REQUESTOR AND IS SUBJECT TO RETURN OR DESTRUCTION IF ITS CONTENTS ARE CONTINGENTLY OR CONTROLLED OR SUBMITTED TO OUTSIDE PARTIES FOR USE OR DISSEMINATION.

SUPERBOLT
P.O. BOX 683
CARNEGIE, PA 15106
412-279-1149

DATE: 3/28/07
S, ASSY., 1.375-6
PRINCETON PLASMA PHYSICS LAB

SCALE: 1:1
DWG NO: S-02200

WEIGHT: 1.56
SHEET: 1 OF 1

APPROVED BY: DATE: 3/28/07

CHECKED BY: DATE: 3/28/07

DRAWN BY: JR Moss

PERBOLT® PRODUCTS ARE PROTECTED BY TRADEMARK RIGHTS AND ONE OR MORE U.S. PATENTS: RE 33490; 4,846,614; 5,083,889; 6,199,453; 6,381,827; 6,112,396; 6,263,764; OTHER PATENTS PENDING AND CORRESPONDING FOREIGN PATENTS.

DWG NO: S-02200

SHEET: 1 OF 1

REV: