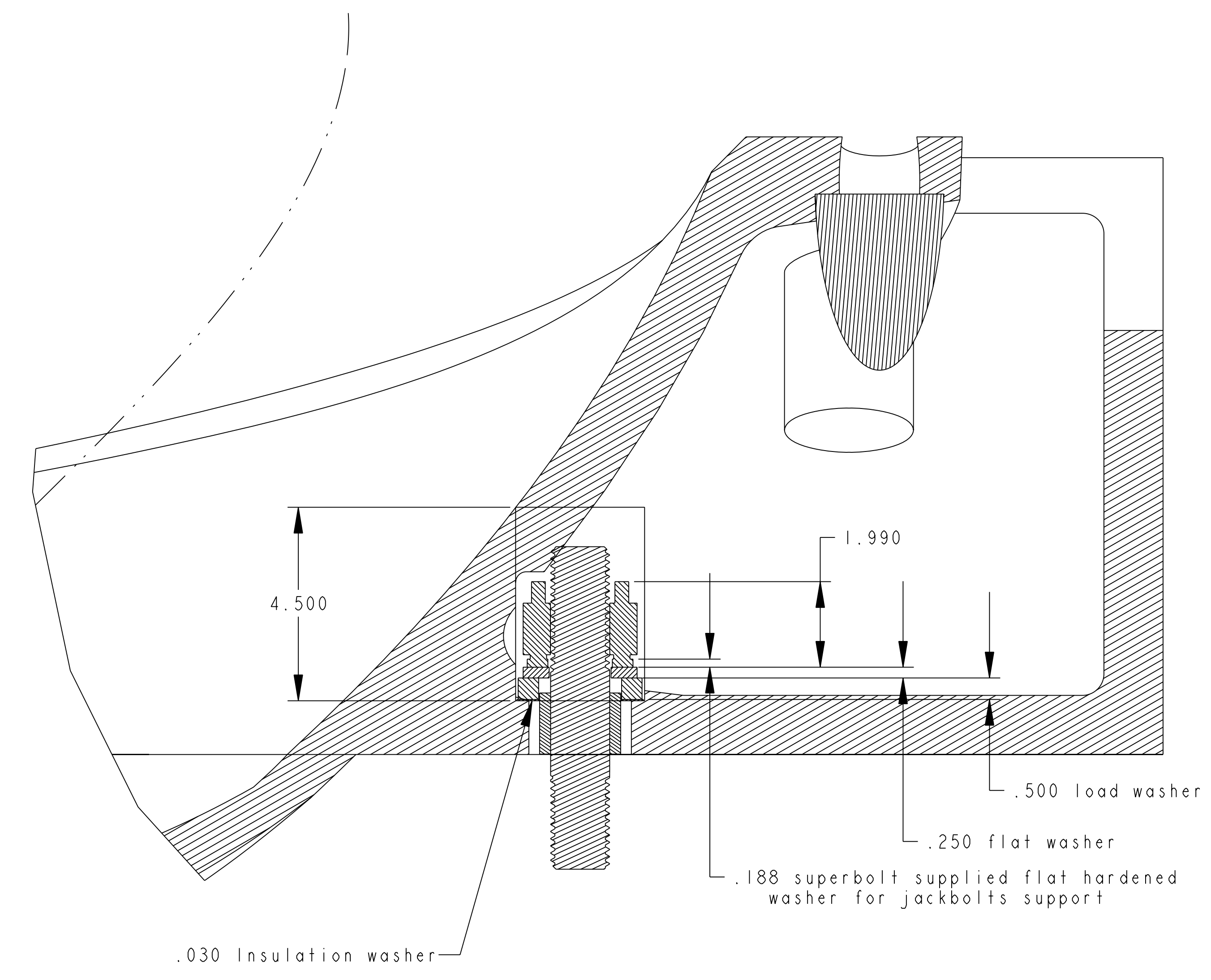
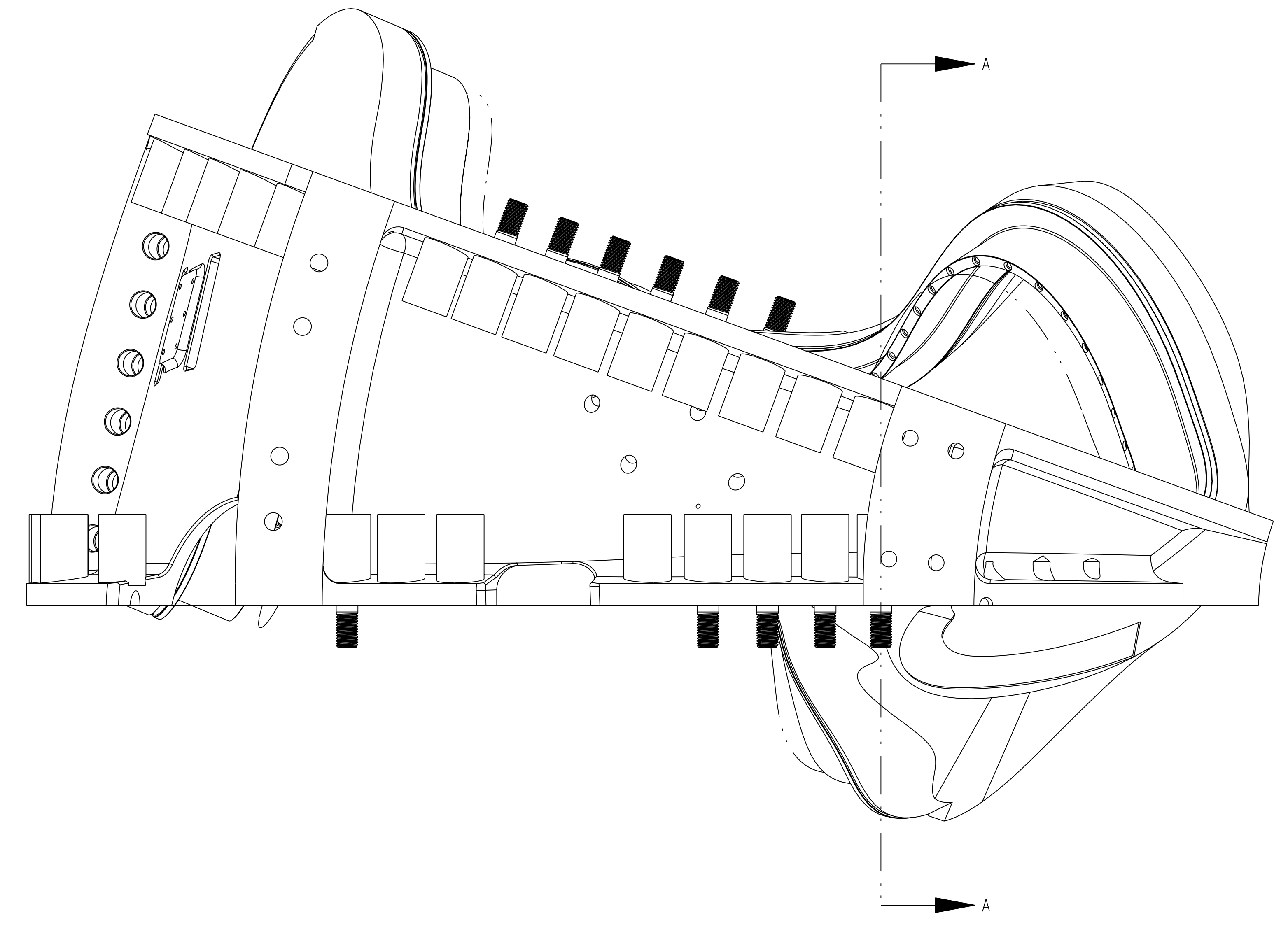
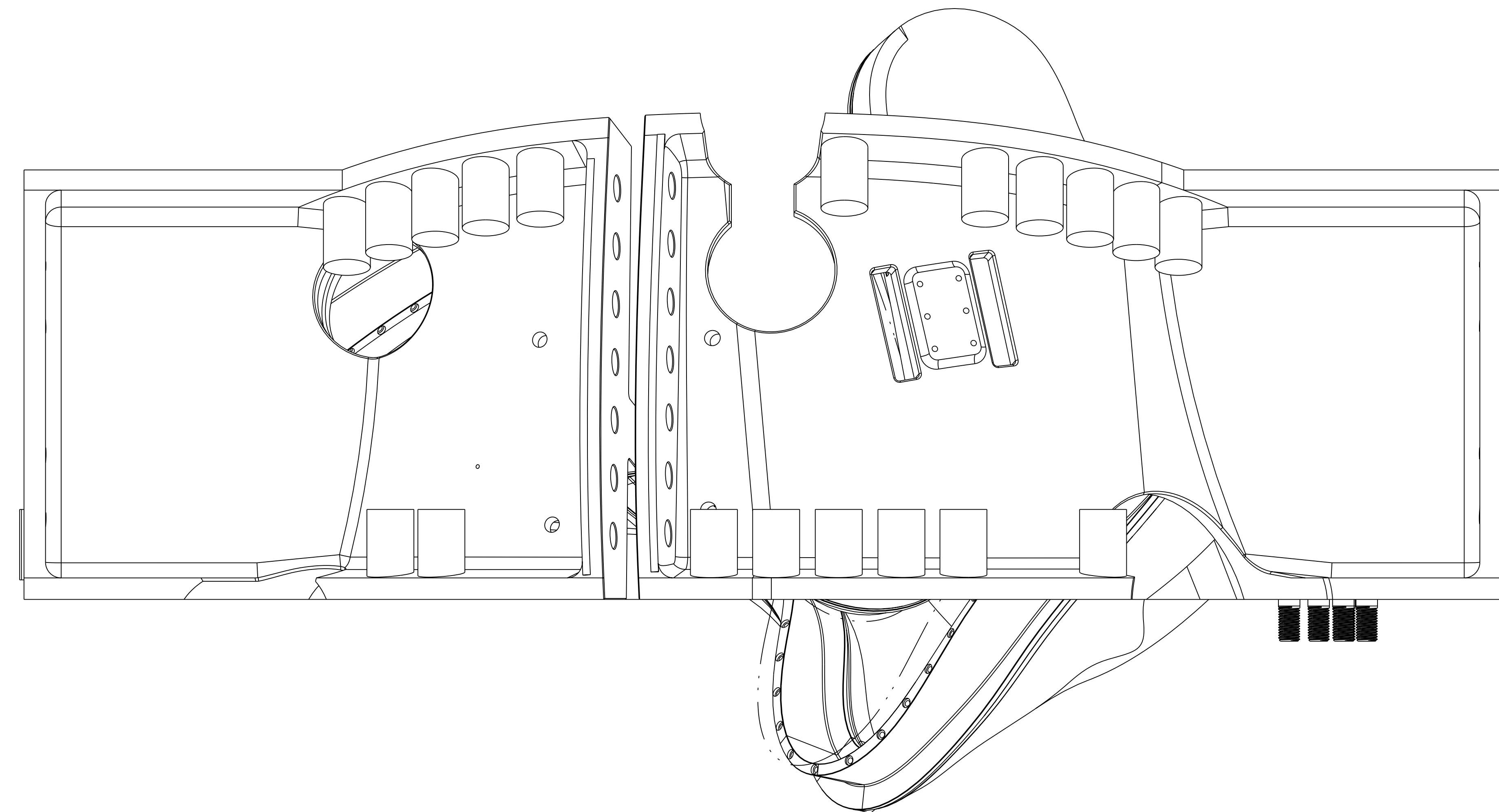


NO.	REVISION	BY	CH	SUP	APPROVED	DATE



SECTION A-A  
SCALE 0.500

PART NO.	DRAWING NO	NOMENCLATURE OR DESCRIPTION	MATERIAL	QTY RECD
5	SE141-116	PRODUCTION WINDING FORM TYPE-C	CAST SS	1
4	SE140-190-2-MJC	NCSX SHEAR TEST STUD ASSY	--	12
3	TYPE_C_GRINDING_CHK	GRINDING CHECK FOR TYPE C WINDING FORM	--	1
2	BOLT-VOL-INTF	GRINDING CHECK FOR TYPE C WINDING FORM	--	12
1	BOLT-VOL	GRINDING CHECK FOR TYPE C WINDING FORM	--	42

PARTS LIST

COMPUTER GENERATED DRAWING MANUAL CHANGES NOT PERMITTED Pro E	CENTRAL FILES: UNLESS OTHERWISE SPECIFIED	PRINCETON PLASMA PHYSICS LABORATORY PRINCETON UNIVERSITY <b>NATIONAL COMPACT STELLARATOR EXPERIMENT</b>	
DO NOT VERIFY INFORMATION BY SCALING DRAWING	DIMENSIONS ARE IN INCHES MACHINE SURFACES UNLESS OTHERWISE SPECIFIED BREAK SHARP EDGES .005/ .020	TOLERANCES NON-CUMULATIVE	DSN: _____
WEIGHT 7378.8 lbs	MODEL NAME TYPE_C_GRINDING_CHK	DECIMAL-INCH FRACTIONS	CHK: _____
RELEASE LEVEL: WIP DWG VERSION NO: 2	WELDING ENGINEER	.XX +/- .030 .XXX +/- .005 ANGULAR +/- .015	ENGR: _____
		OVER 120° +/- .172	SUPV: _____
			DRAWING NO: _____
			CHK: _____
			ENGR: _____
			SUPV: _____
			DRAWING NO: _____
			CHK: _____
			ENGR: _____
			SUPV: _____
			DRAWING NO: _____
			CHK: _____
			ENGR: _____
			SUPV: _____
			DRAWING NO: _____
			CHK: _____
			ENGR: _____
			SUPV: _____

C1 BOLT CLEARANCE