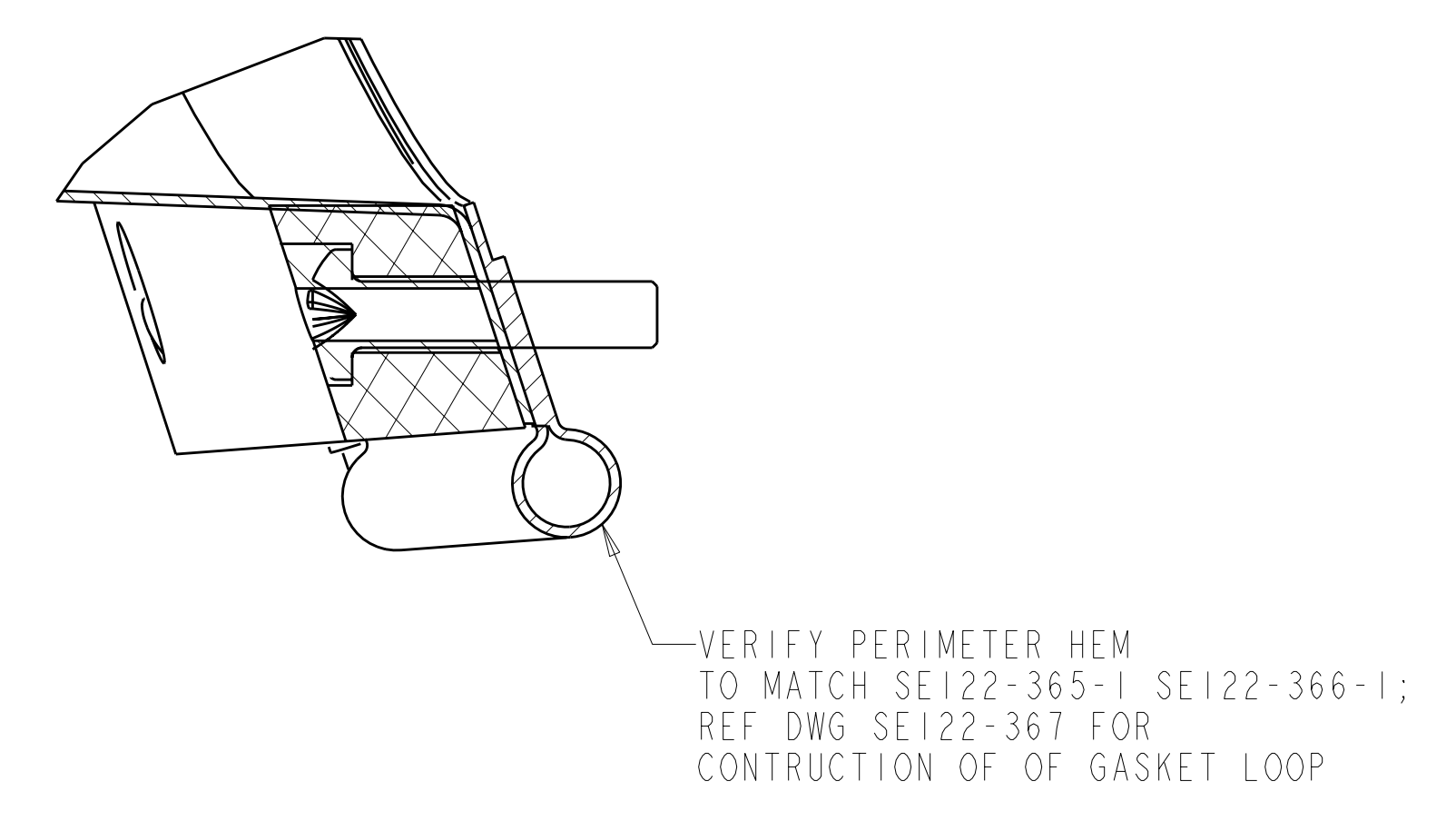
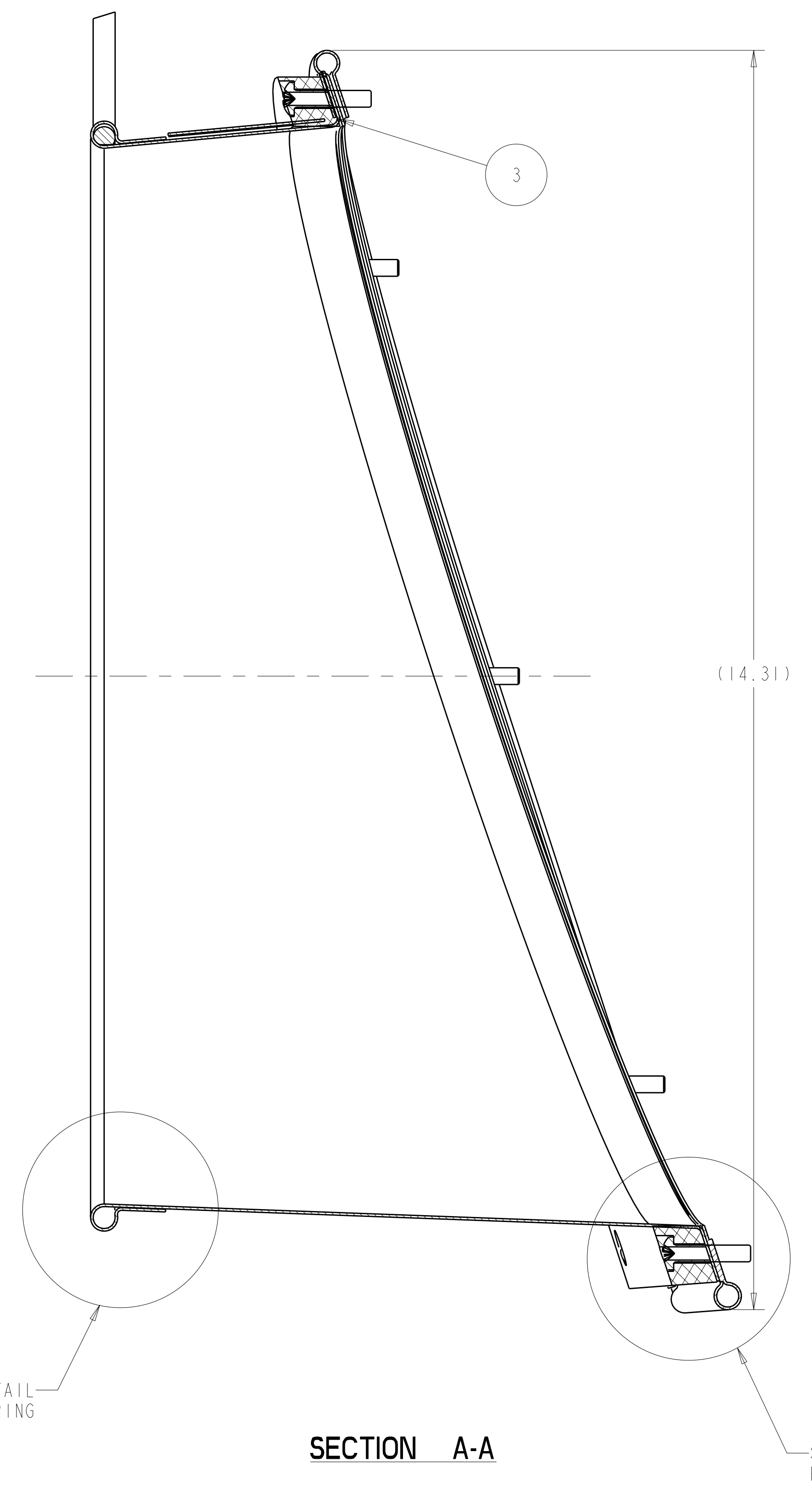
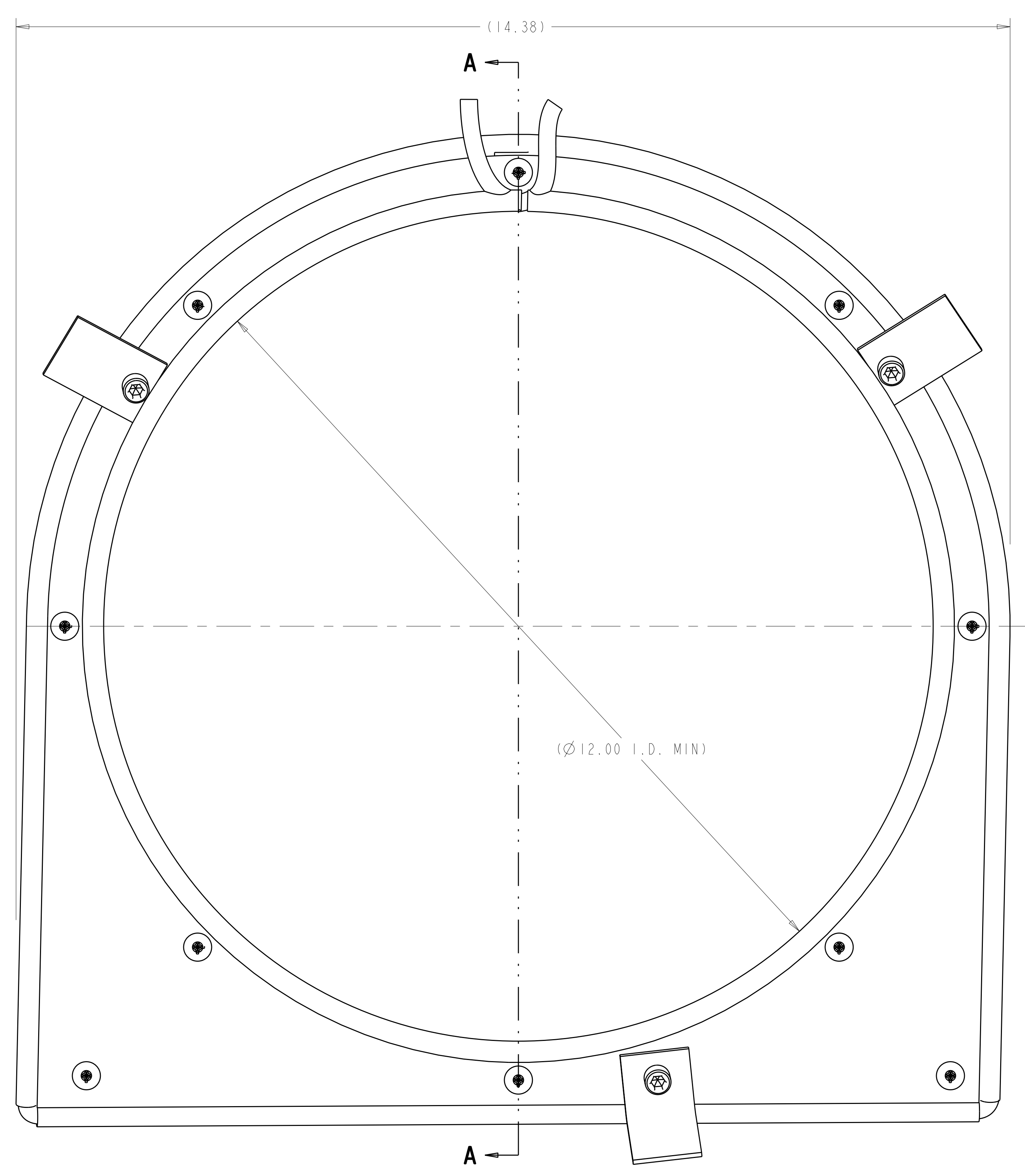
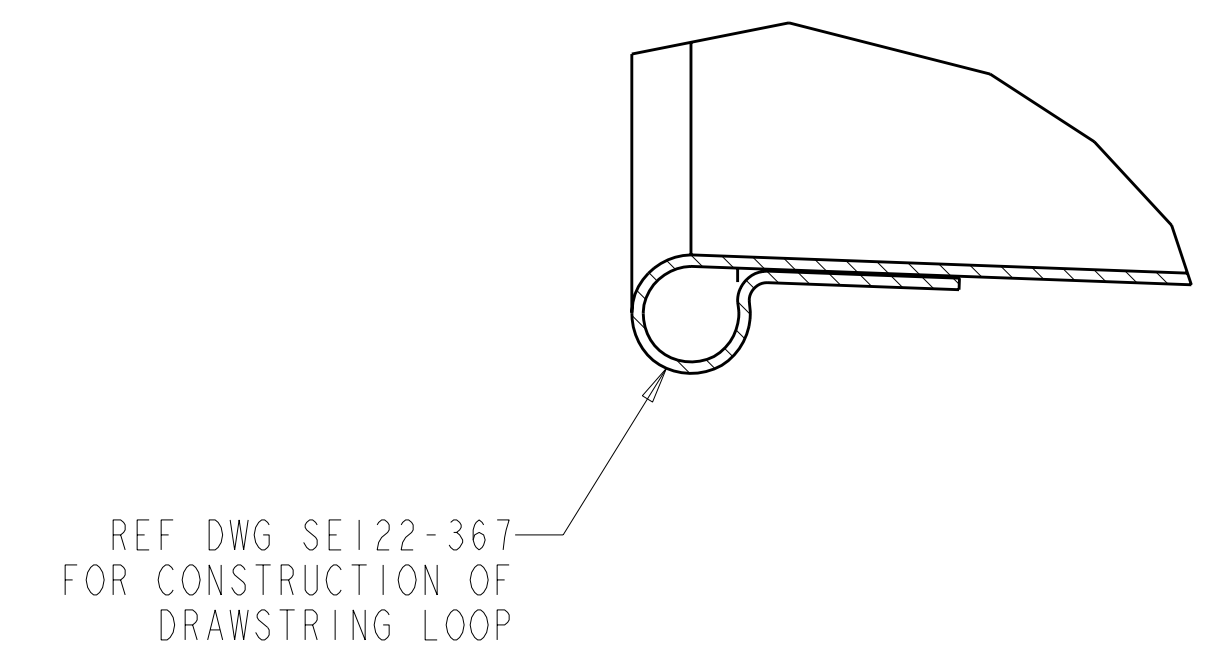


NOTES
 1. DRAWING PREPARED IN ACCORDANCE WITH ASME Y14.100-2004.
 2. INTERPRET DIMENSIONS AND TOLERANCES PER ASME Y14.5M-1994.
 3. DIMENSIONS ARE IN INCHES.



REV	DESCRIPTION	BY	DATE	CHK	DEPT	DATE	PE	REQ	DATE	ORNL	DOE	DATE
0	ORIGINAL ISSUE	RAH	01/07	SP		01/07						
1	REVISION OR ISSUE PURPOSE											

CAGE CODE	PART OR IDENTIFYING NO	NOMENCLATURE OR DESCRIPTION	MATERIAL	SPECIFICATION	FIND NO
10	94070A247	#10-24 UNC X 1.00 LG PAN HEAD PHILLIPS MACHINE SCREW	BRASS	MCMMASTER CARR P.O. BOX 740100 ATLANTA, GA 30374-0100 (404) 346-7000 WWW.MCMMASTER.COM	8
3	93465A537	1/4-20 UNC X .50 LG SHCS			7
1	SE122-399-2	PORT CLIP			6
2	SE122-399-1	PORT CLIP			5
1	SE122-367-1	PORT 10 WINDING FORM SEAL BOOT ASSEMBLY			4
1	SE122-366-1	PORT 10 WINDING FORM SEAL INNER PLATE			3
1	SE122-365-1	PORT 10 WINDING FORM SEAL OUTER PLATE			2
AR	-1	PORT 10 WINDING FORM SEAL ASSEMBLY			1

← NEXT ASSEMBLY

-1 PORT 10 WINDING FORM SEAL ASSEMBLY
SCALE 1.000

NO REPRESENTATION OR WARRANTY, EXPRESSED OR IMPLIED, IS MADE AS TO THE ACCURACY, COMPLETENESS OR USEFULNESS OF THE INFORMATION OR STATEMENTS CONTAINED IN THESE DRAWINGS, OR THAT THE USE OR DISCLOSURE OF ANY INFORMATION, APPARATUS, METHOD OR PROCESS DISCLOSED IN THESE DRAWINGS MAY NOT INFRINGE PRIVATE RIGHTS OF OTHERS. NO LIABILITY IS ASSUMED WITH RESPECT TO THE USE OF, OR FOR DAMAGES RESULTING FROM THE USE OF, ANY INFORMATION, APPARATUS, METHOD OR PROCESS DISCLOSED IN THESE DRAWINGS. DRAWINGS MADE AVAILABLE FOR INFORMATION TO BIDDER ARE NOT TO BE USED FOR OTHER PURPOSES, AND ARE TO BE RETURNED UPON REQUEST OF THE FORWARDING CONTRACTOR.

P THIS DRAWING PRODUCED ON PRO-ENGINEER

SCALE	NOTED	DES	DATE	DRW	DATE	CHK	DATE	SECT	DEPT	PE	DATE	REQ	DATE	ORNL	DOE	DATE
		P. L. GORANSON	01/07	R. A. HURD	01/07	S. PARSON	01/07									

SCALE NOTED
 TOLERANCES UNLESS OTHERWISE SPECIFIED
 FRACTIONS ±.01
 XX DECIMALS ±.005
 XXX DECIMALS ±.0015
 ANGLES ±0°15'
 BREAK SHARP EDGES OR MAX
 FINISH .125 UNLESS OTHERWISE SPECIFIED

DESIGNED BY: P. L. GORANSON 01/07
 DRAWN BY: R. A. HURD 01/07
 CHECKED BY: S. PARSON 01/07

PPPL DRFT J SIEGEL 01/07

Oak Ridge National Laboratory managed for the DEPARTMENT OF ENERGY under U.S. GOVERNMENT contract DE-AC05-00OR22725 UT-BATTELLE, LLC, Oak Ridge, Tennessee
UT-BATTELLE
 PROJECT NAME: NATIONAL COMPACT STELLARATOR EXPERIMENT
PORT 10 WINDING FORM SEAL ASSEMBLY

VERSION NO.	PLANT	BLDG	FL	SHT	OF	TYPE	CLASS
4+	ORNL	5700	3	1	1	A	U
RELEASE LEVEL	SE122-364						
WIP	REV 0						