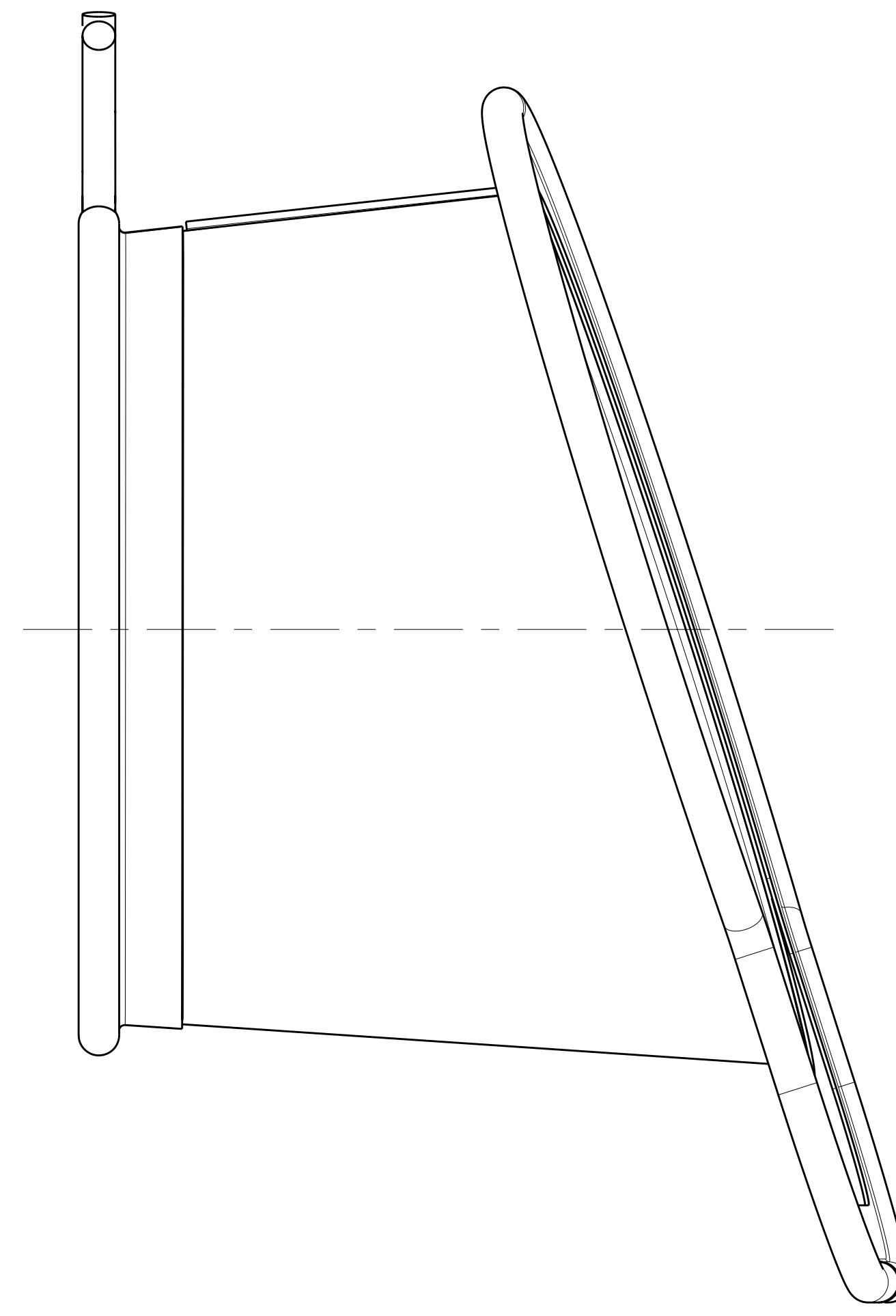
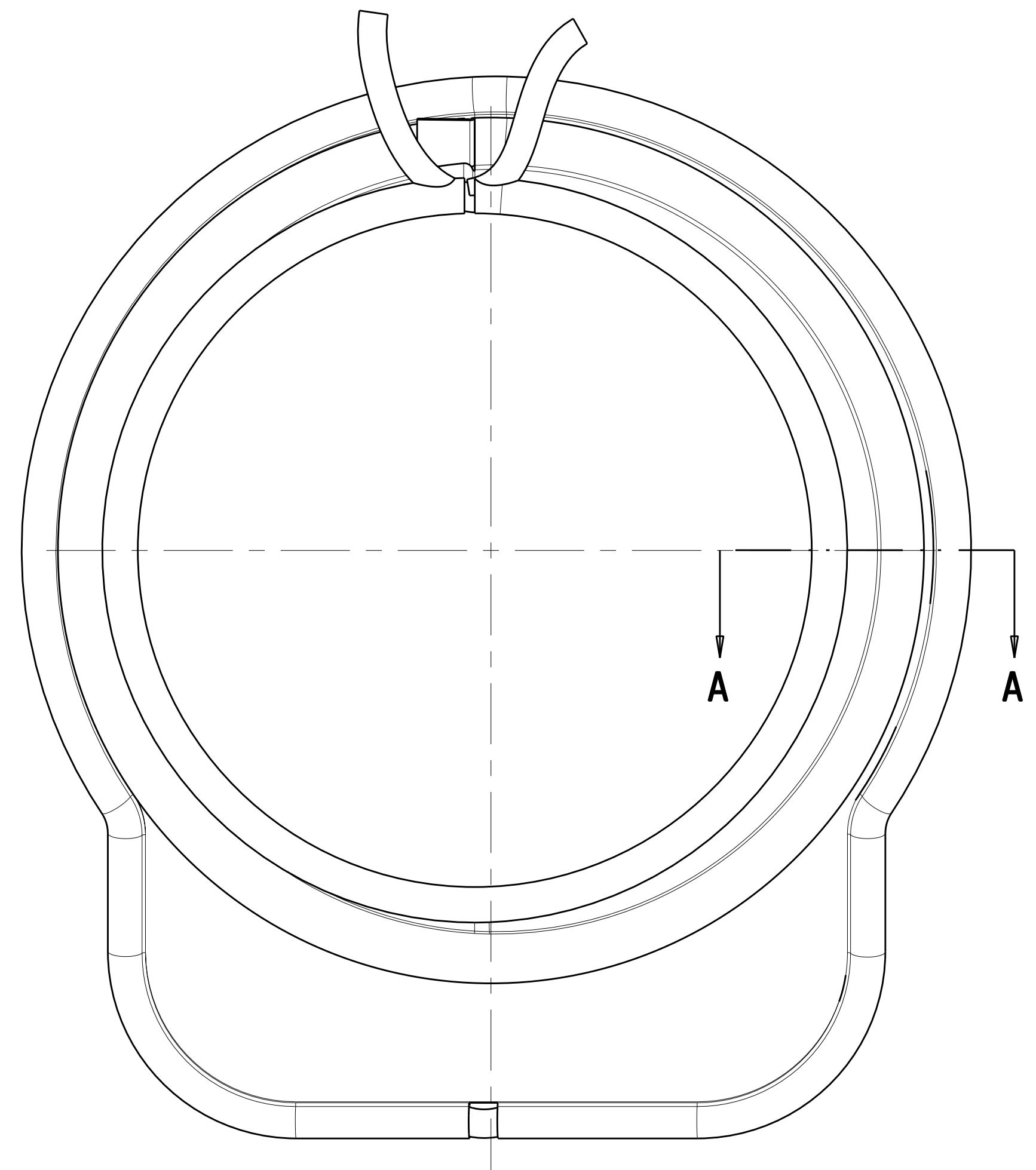
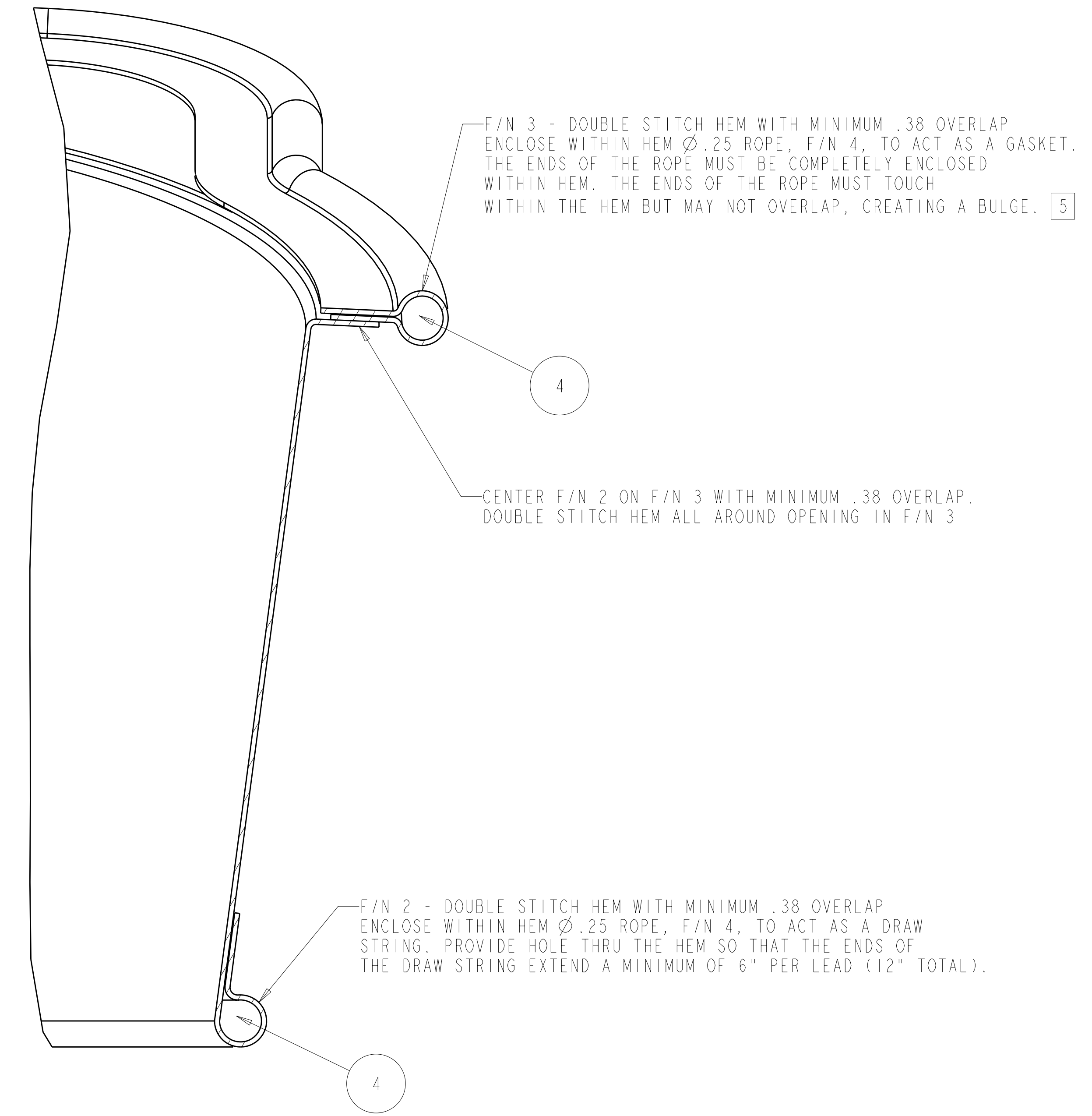


ISOMETRIC VIEW
SCALE 1.000



-1 PORT II WINDING FORM SEAL BOOT ASSEMBLY
SCALE 1.000



SECTION A-A
SCALE 2.000

- NOTES
1. DRAWING PREPARED IN ACCORDANCE WITH ASME Y14.100-2004.
 2. INTERPRET DIMENSIONS AND TOLERANCES PER ASME Y14.5M-1994.
 3. DIMENSIONS ARE IN INCHES
 4. FLAT PATTERNS TO BE CREATED FROM FULL SIZE PLOT.
 5. VERIFY HEM PROFILE IN ASSEMBLY SE122-368.

REV	DESCRIPTION	BY	DATE	CHK	DEPT	DATE	PE	REQ	DATE	ORNL	DOE	DATE
0	ORIGINAL ISSUE	RAH	01/01	SP		01/01						

CAGE CODE	PART OR IDENTIFYING NO	NOMENCLATURE OR DESCRIPTION	MATERIAL	SPECIFICATION	FIND NO
4 5	1	-4	Ø.25 ROPE	NCSX-PRL-12-001	4
4 5	1	-3	PORT II WINDING FORM SEAL BOOT BACK	NCSX-PRL-12-001	3
4	1	-2	PORT II WINDING FORM SEAL BOOT CONE	NCSX-PRL-12-001	2
AR	X	-1	PORT II WINDING FORM SEAL BOOT ASSEMBLY		1

← PARTS LIST

NO REPRESENTATION OR WARRANTY, EXPRESSED OR IMPLIED, IS MADE AS TO THE ACCURACY, COMPLETENESS OR USEFULNESS OF THE INFORMATION OR STATEMENTS CONTAINED IN THESE DRAWINGS, OR THAT THE USE OR DISCLOSURE OF ANY INFORMATION, APPARATUS, METHOD OR PROCESS DISCLOSED IN THESE DRAWINGS MAY NOT INFRINGE PRIVATE RIGHTS OF OTHERS. NO LIABILITY IS ASSUMED WITH RESPECT TO THE USE OF, OR FOR DAMAGES RESULTING FROM THE USE OF, ANY INFORMATION, APPARATUS, METHOD OR PROCESS DISCLOSED IN THESE DRAWINGS. DRAWINGS MADE AVAILABLE FOR INFORMATION TO BIDDER ARE NOT TO BE USED FOR OTHER PURPOSES, AND ARE TO BE RETURNED UPON REQUEST OF THE FORWARDING CONTRACTOR.

P THIS DRAWING PRODUCED ON PRO-ENGINEER

SCALE NOTED

TOLERANCES UNLESS OTHERWISE SPECIFIED

FRACTIONS :
XX DECIMALS ±.01
XXX DECIMALS ±.005
ANGLES ±0°15'
BREAK SHARP EDGES OR MAX
FINISH .125 UNLESS OTHERWISE SPECIFIED

DES	P. L. GORANSON	01/07
DRW	R. A. HURD	01/07
CHK	S. PARSON	01/07
SECT	:	:
DEPT	:	:
PE	:	:
CR	:	:
PJ	:	:
REQ	:	:
PPPL DRFT	J. SIEGEL	01/07

UT-BATTELLE

Oak Ridge National Laboratory
managed for the DEPARTMENT OF ENERGY under
U.S. GOVERNMENT contract DE-AC05-00OR22725
UT-BATTELLE, LLC, Oak Ridge, Tennessee

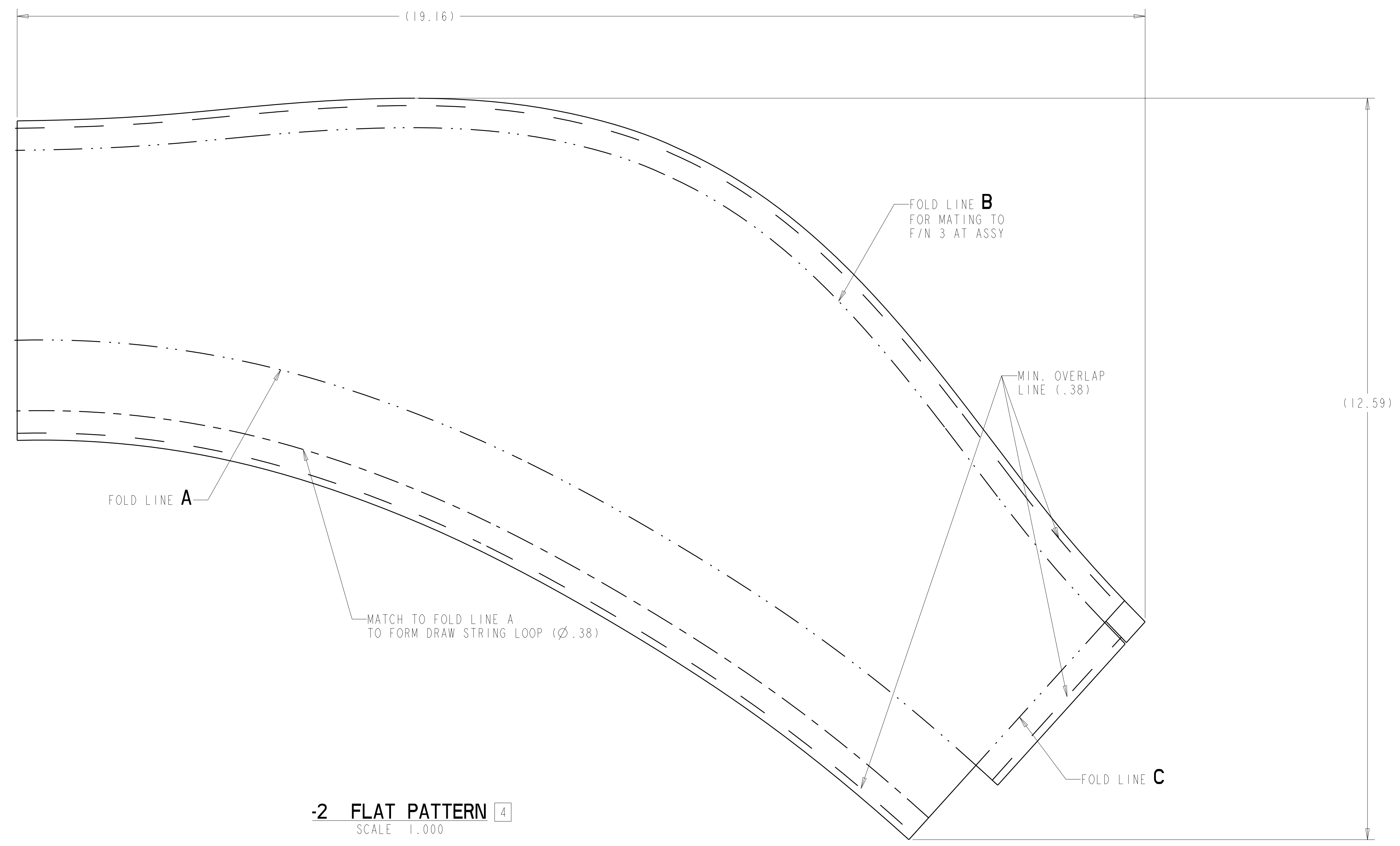
PROJECT NAME
NATIONAL COMPACT STELLARATOR EXPERIMENT

PORT II WINDING FORM SEAL BOOT ASSEMBLY

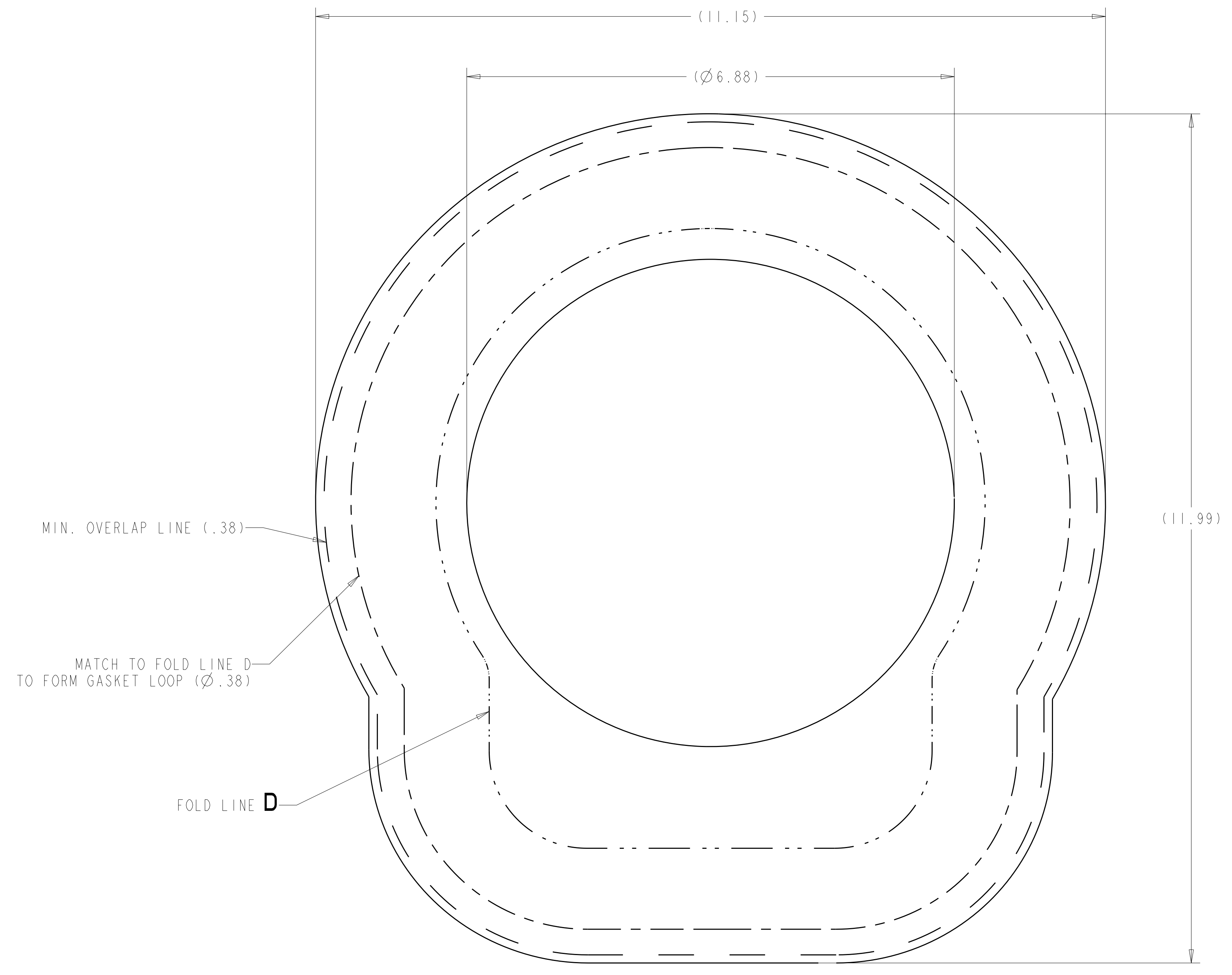
VERSION NO.	4	PLANT	ORNL	BLDG	5700	FL	3	SHT	1	OF	2	TYPE	A	CLASS	U
RELEASE LEVEL	WIP														
DRAWING APPROVALS	DATE														

SE122-371

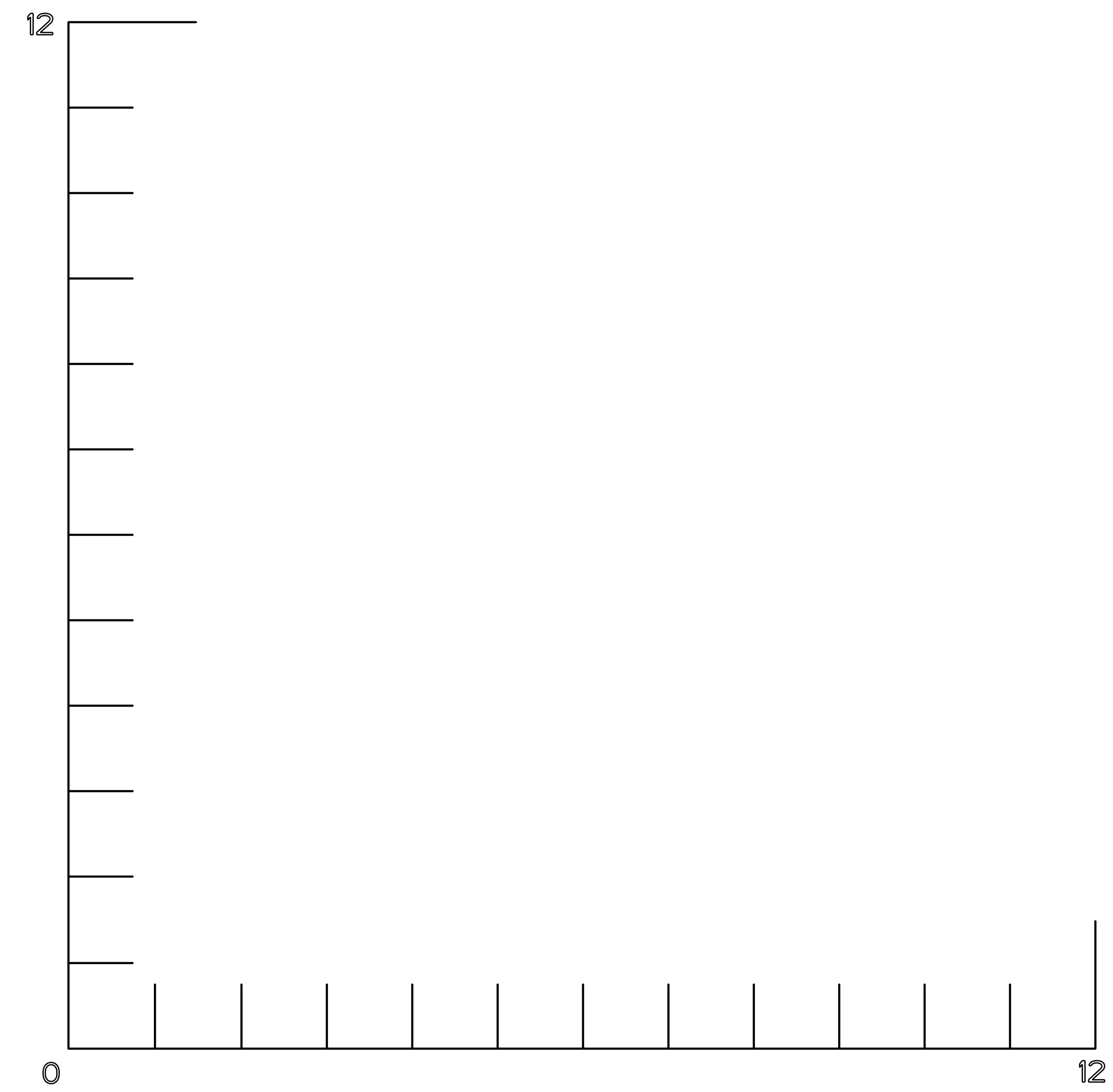
REV 0



-2 FLAT PATTERN 4
SCALE 1.000



-3 FLAT PATTERN 4
SCALE 1.000



1:1 SCALE
AT FULL SIZE

Oak Ridge National Laboratory managed for the DEPARTMENT OF ENERGY under U.S. GOVERNMENT contract DE-AC05-00OR22725 UT-BATTELLE, LLC, Oak Ridge, Tennessee PROJECT NAME									
UT-BATTELLE NATIONAL COMPACT STELLARATOR EXPERIMENT									
PORT II WINDING FORM SEAL BOOT ASSEMBLY									
VERSION NO. 4	PLANT ORNL	BLDG 5700	FL 3	SHT OF 2	TYPE 2	CLASS A	REV U		
RELEASE LEVEL WIP		SE122-371					REV 0		

SE122-371