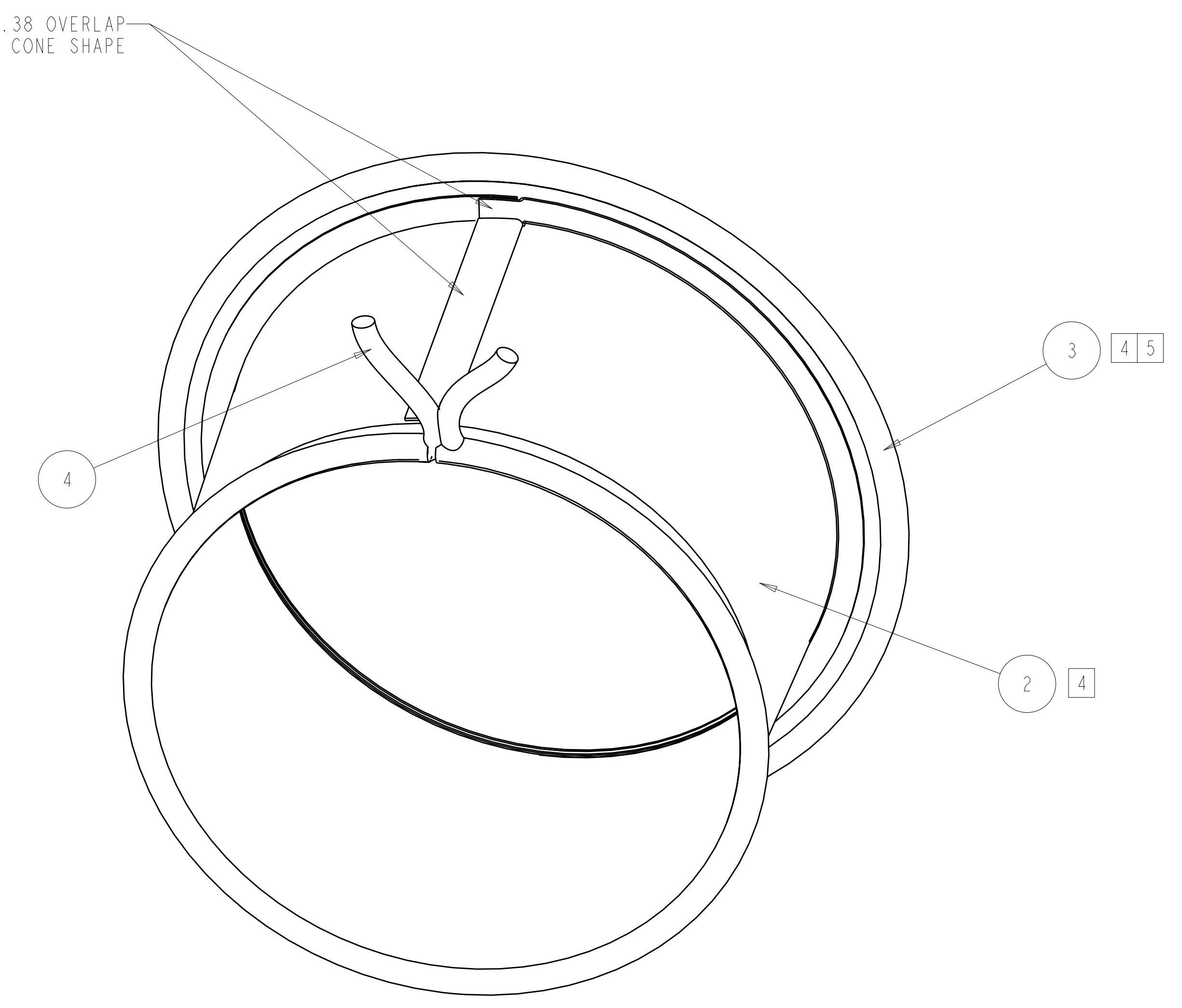
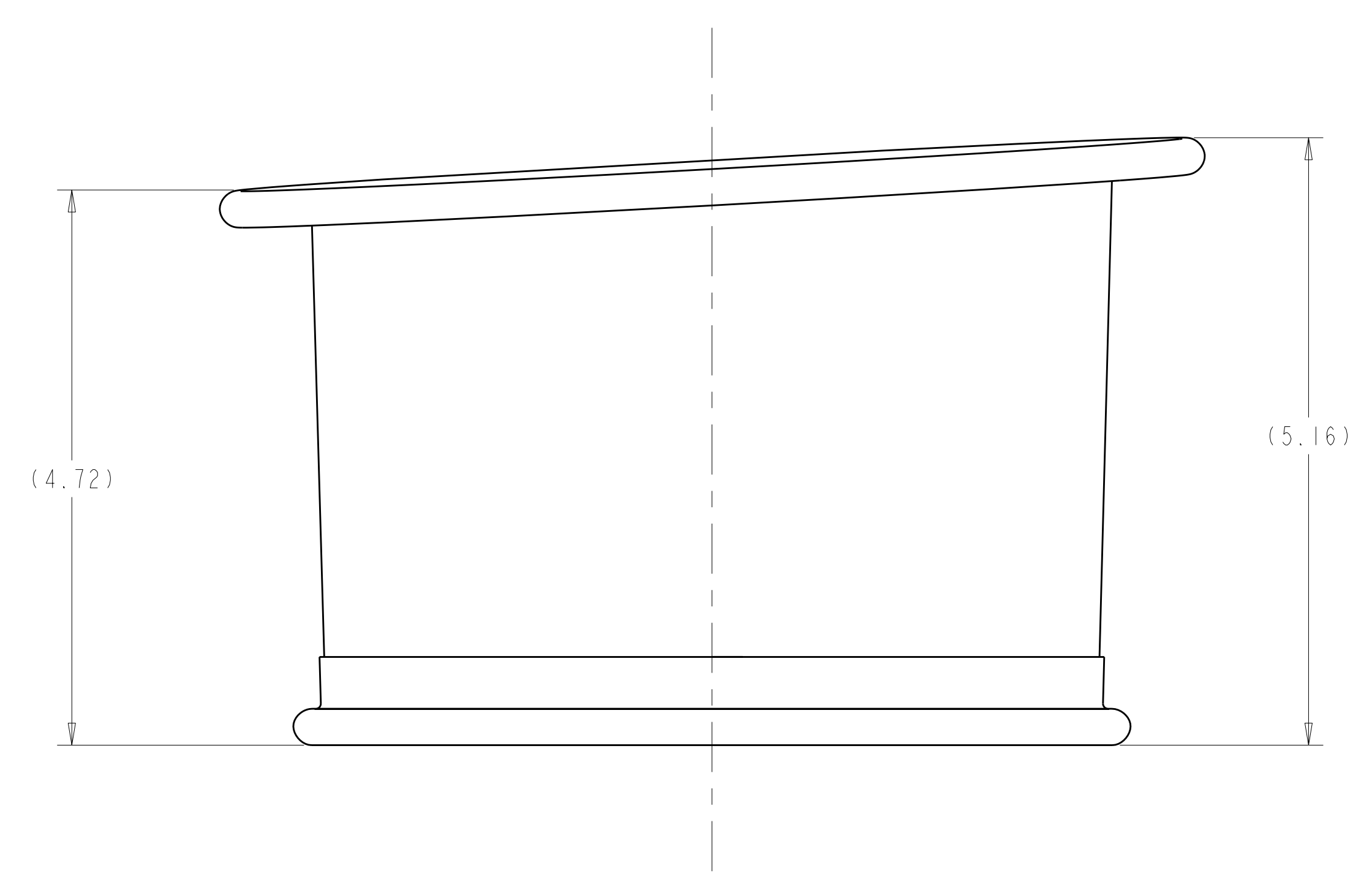
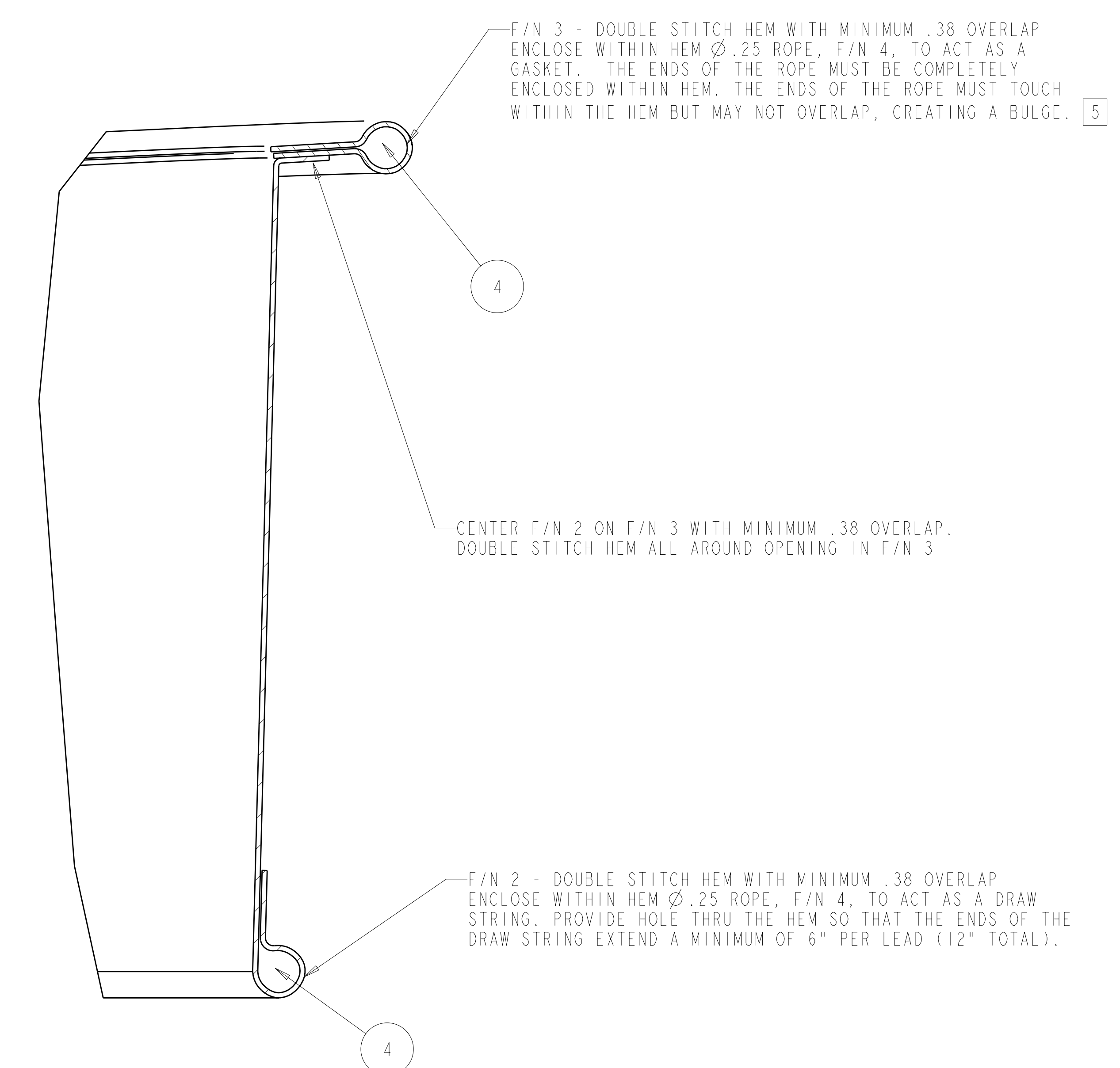


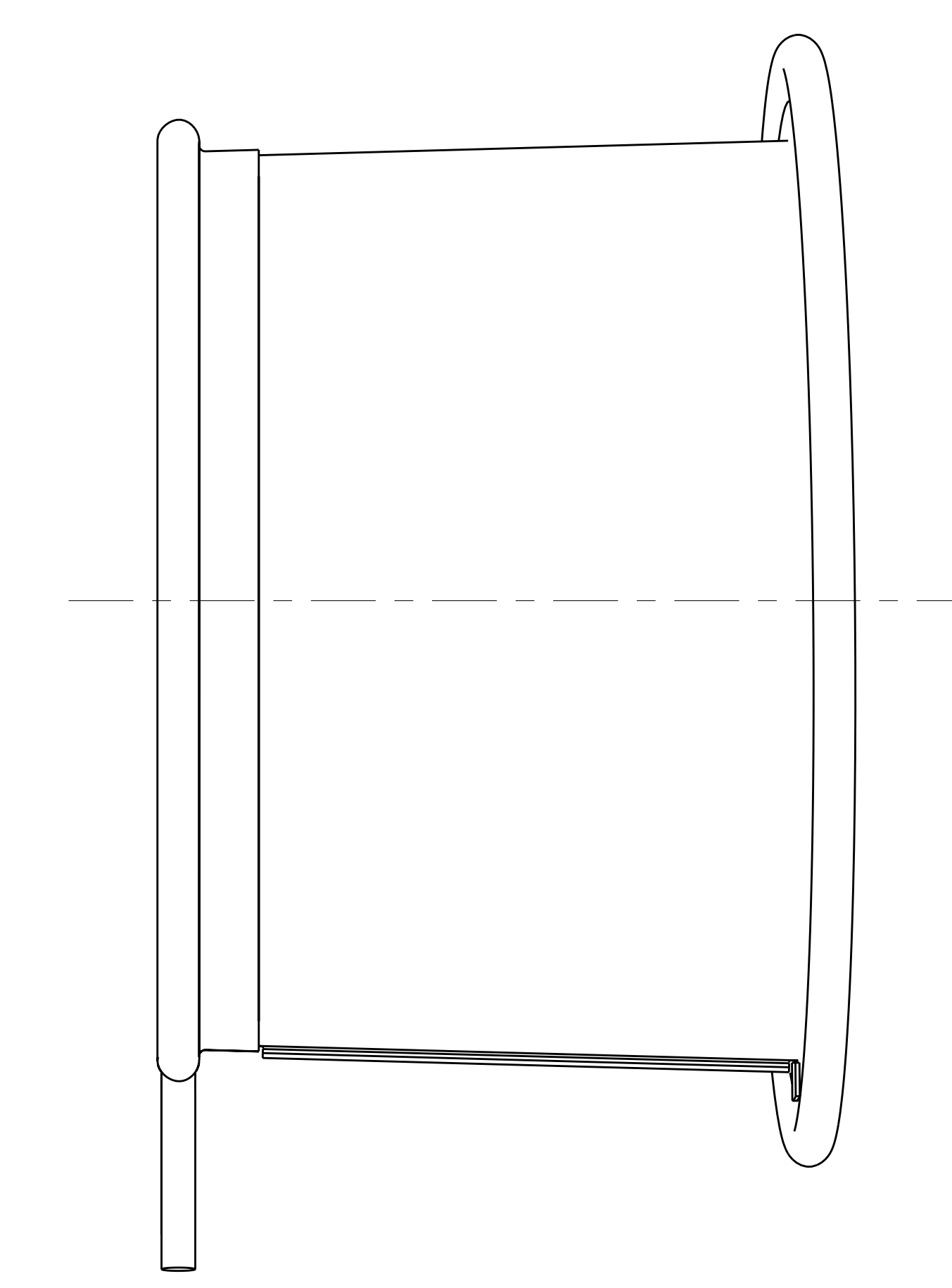
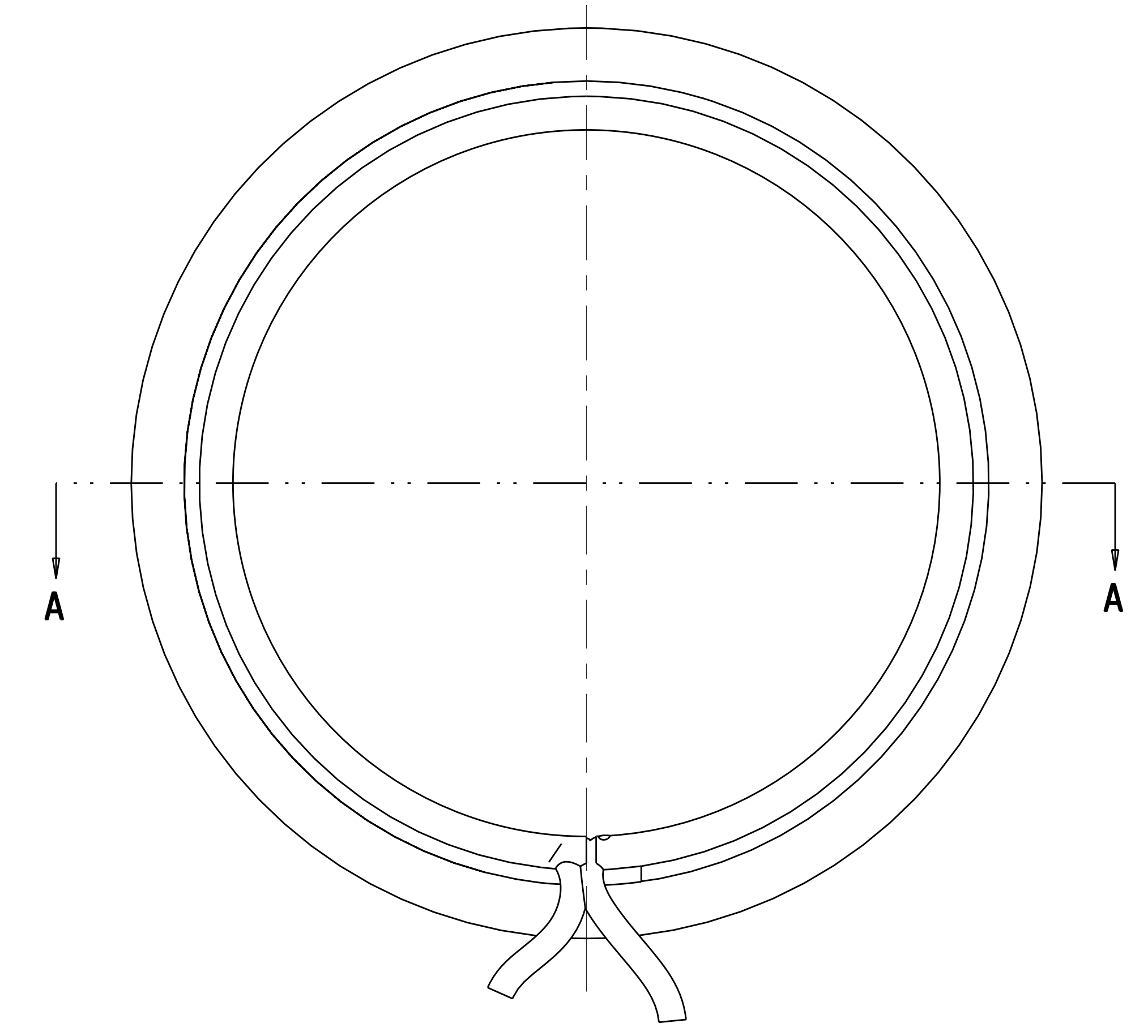
- NOTES
1. DRAWING PREPARED IN ACCORDANCE WITH ASME Y14.100-2004.
 2. INTERPRET DIMENSIONS AND TOLERANCES PER ASME Y14.5M-1994.
 3. DIMENSIONS ARE IN INCHES
 4. FLAT PATTERNS TO BE CREATED FROM FULL SIZE PLOT.
 5. VERIFY HEM PROFILE IN ASSEMBLY SE122-384.



ISOMETRIC VIEW
SCALE 1.00



SECTION A-A
SCALE 2.000



-1 PORT 8 WINDING FORM SEAL BOOT ASSEMBLY
SCALE 1.000

REV	DESCRIPTION	BY	DATE	CHK	DEPT	DATE	PE	REQ	DATE	ORNL	DOE	DATE
0	ORIGINAL ISSUE	MTR	01/07	SP		01/07						

CAGE CODE	PART OR IDENTIFYING NO	NOMENCLATURE OR DESCRIPTION	MATERIAL	SPECIFICATION	FIND NO
AR	-4	Ø.25 ROPE		NCSX-PRL-12-001	4
4 5	1	PORT 8 WINDING FORM SEAL BOOT BACK		NCSX-PRL-12-001	3
4	1	PORT 8 WINDING FORM SEAL BOOT CONE		NCSX-PRL-12-001	2
AR	-1	PORT 8 WINDING FORM SEAL BOOT ASSEMBLY			1

NO REPRESENTATION OR WARRANTY, EXPRESSED OR IMPLIED, IS MADE AS TO THE ACCURACY, COMPLETENESS OR USEFULNESS OF THE INFORMATION OR STATEMENTS CONTAINED IN THESE DRAWINGS, OR THAT THE USE OR DISCLOSURE OF ANY INFORMATION, APPARATUS, METHOD OR PROCESS DISCLOSED IN THESE DRAWINGS MAY NOT INFRINGE PRIVATE RIGHTS OF OTHERS. NO LIABILITY IS ASSUMED WITH RESPECT TO THE USE OF, OR FOR DAMAGES RESULTING FROM THE USE OF, ANY INFORMATION, APPARATUS, METHOD OR PROCESS DISCLOSED IN THESE DRAWINGS. DRAWINGS MADE AVAILABLE FOR INFORMATION TO BIDDER ARE NOT TO BE USED FOR OTHER PURPOSES, AND ARE TO BE RETURNED UPON REQUEST OF THE FORWARDING CONTRACTOR.

P THIS DRAWING PRODUCED ON PRO-ENGINEER

SCALE NOTED

TOLERANCES UNLESS OTHERWISE SPECIFIED

FRACTIONS :
XX DECIMALS ±.01
XXX DECIMALS ±.005
ANGLES ±0°15'
BREAK SHARP EDGES OR MAX
FINISH .125 UNLESS OTHERWISE SPECIFIED

DES	PL GORANSON	01/07
DRW	MT BROWN	01/07
CHK	S. PARSON	01/07
SECT		
DEPT		
PE		
CR		
PJ		
REQ		
PPPL DRFT	J SIEGEL	01/07
DATE		

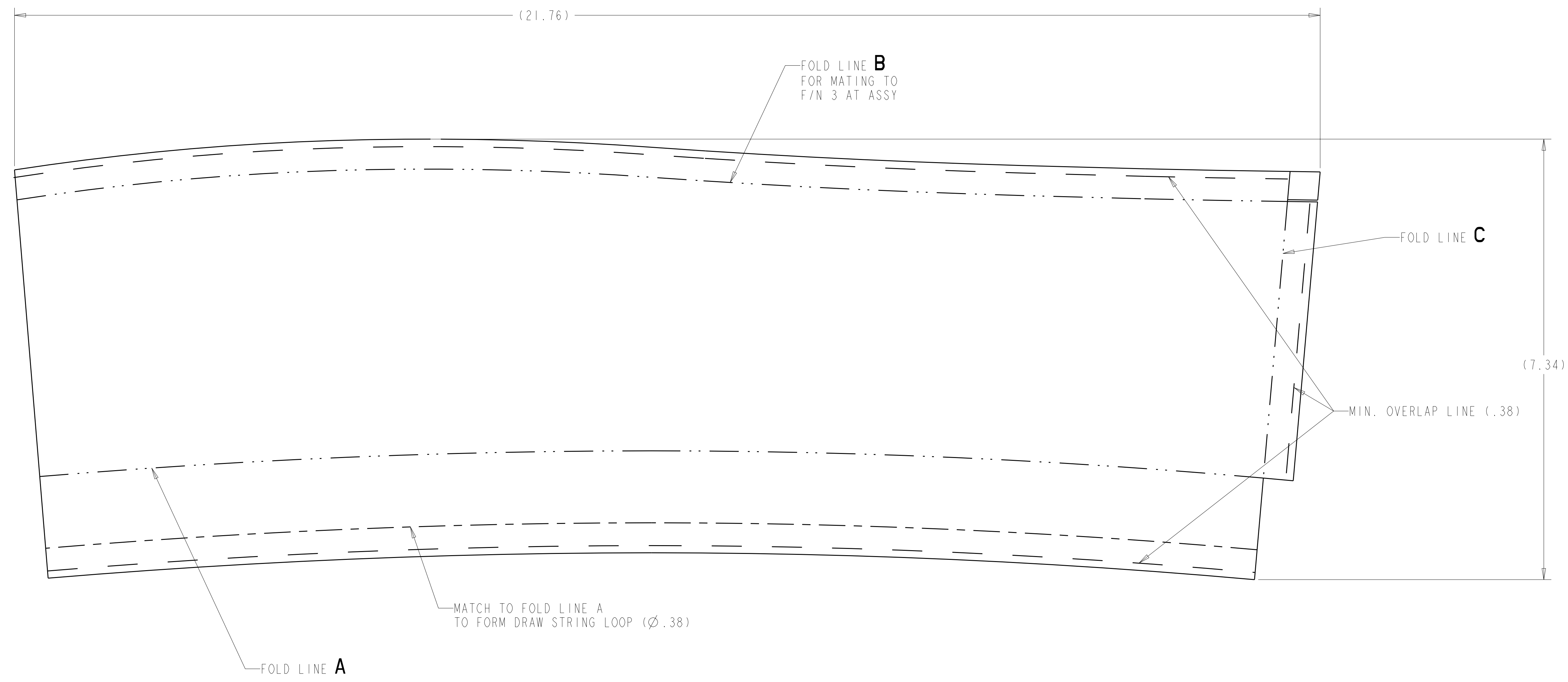
Oak Ridge National Laboratory
managed for the DEPARTMENT OF ENERGY under
U.S. GOVERNMENT contract DE-AC05-00OR22725
UT-BATTELLE, LLC. Oak Ridge, Tennessee

UT-BATTELLE

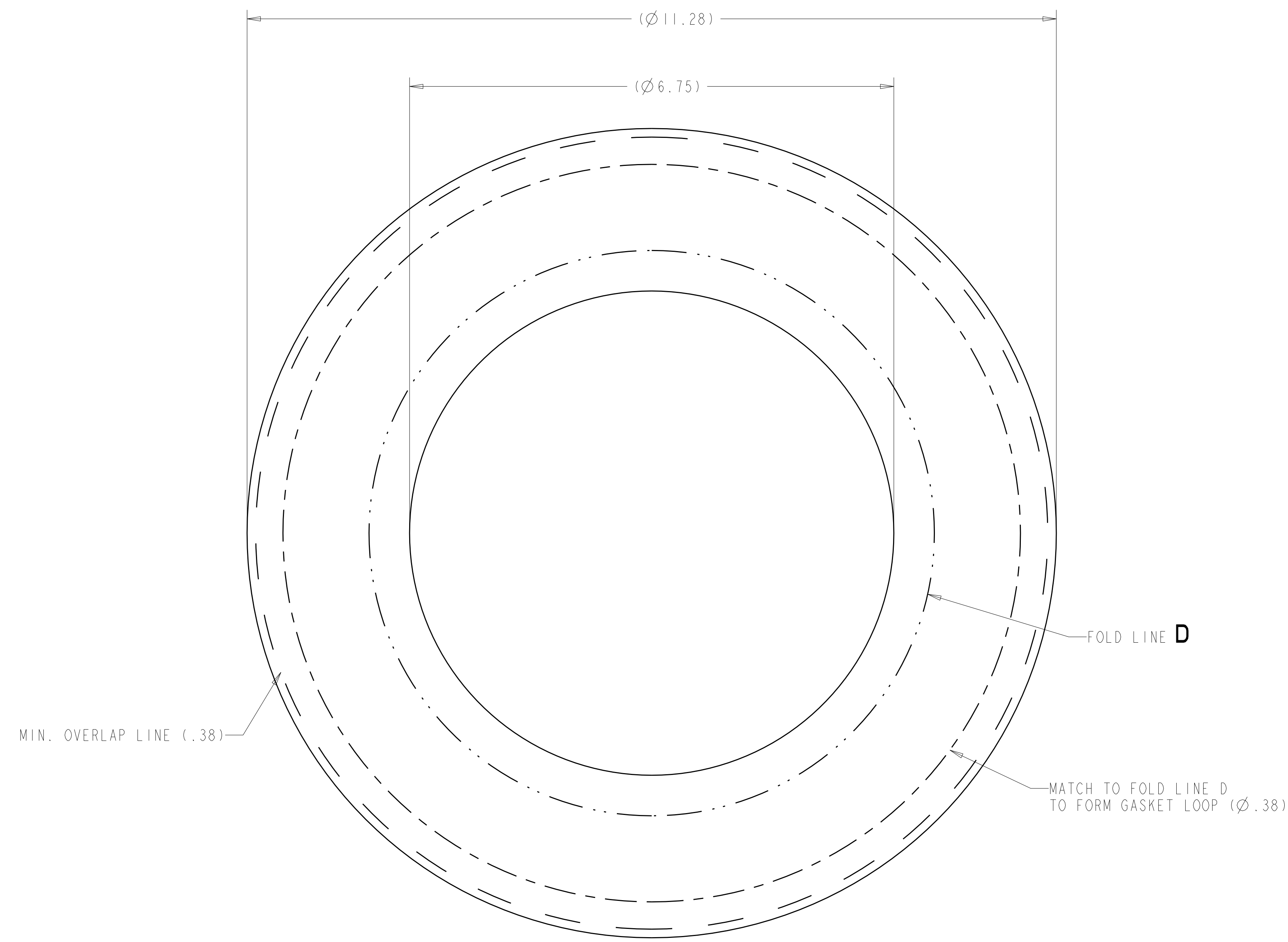
NATIONAL COMPACT STELLARATOR EXPERIMENT

PORT 8 WINDING FORM SEAL
BOOT ASSEMBLY

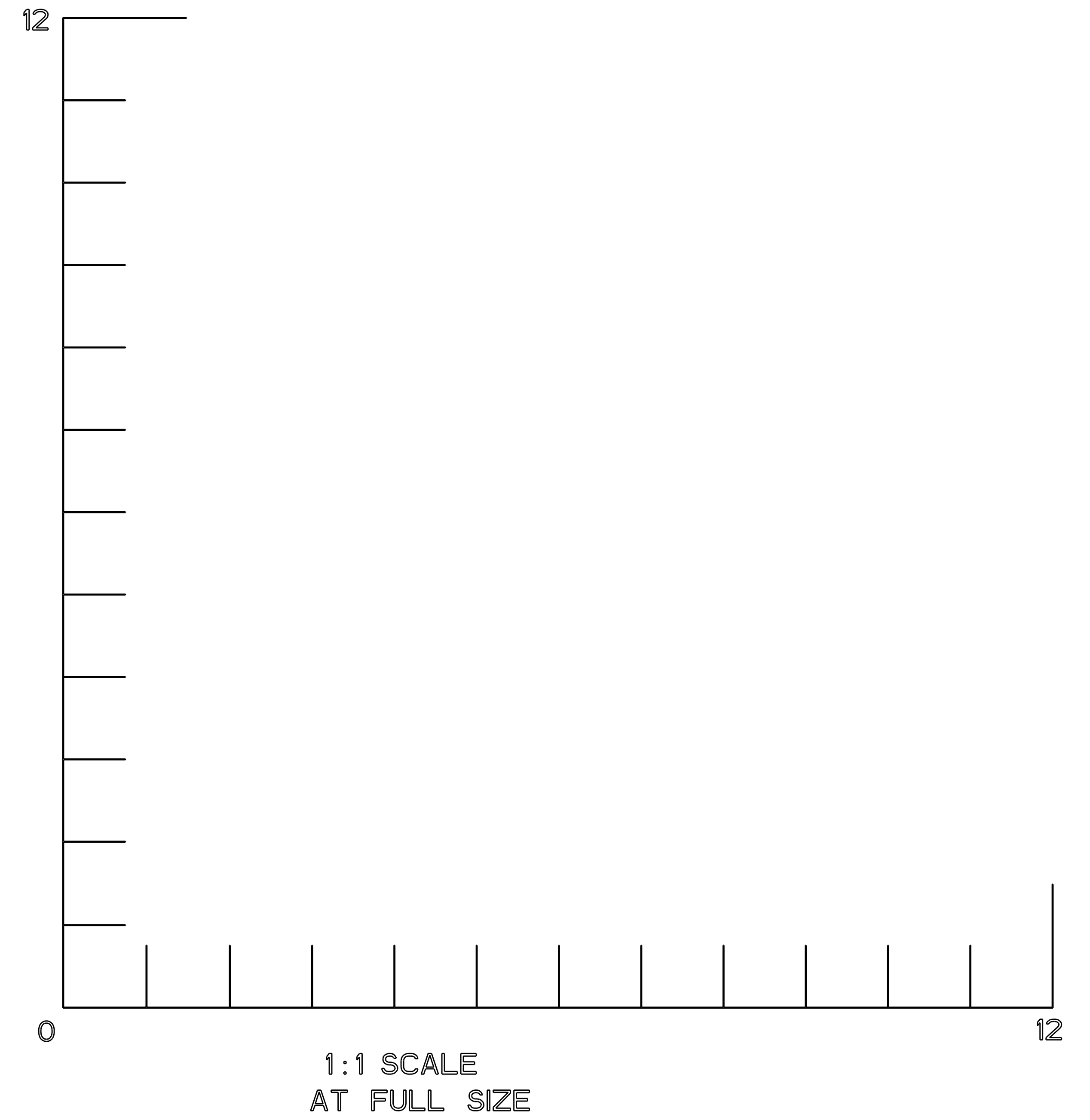
VERSION NO.	PLANT	BLDG	FL	SHT	OF	TYPE	CLASS
4	ORNL	5700	3	1	2	A	U
RELEASE LEVEL	SE122-387						
WIP	REV 0						



-2 FLAT PATTERN [4]
SCALE 1.00



-3 FLAT PATTERN [4]
SCALE 1.00



Oak Ridge National Laboratory managed for the DEPARTMENT OF ENERGY under UT-BATTELLE U.S. GOVERNMENT CONTRACT DE-AC05-00OR22725 UT-BATTELLE, LLC. Oak Ridge, Tennessee <small>PROJECT NAME</small>							
NATIONAL COMPACT STELLARATOR EXPERIMENT							
PORT 8 WINDING FORM SEAL BOOT ASSEMBLY							
VERSION NO. 4	PLANT ORNL	BLDG 5700	FL 3	SHT OF 2	TYPE 2	CLASS A	U
RELEASE LEVEL WIP		SE 122-387				REV 0	