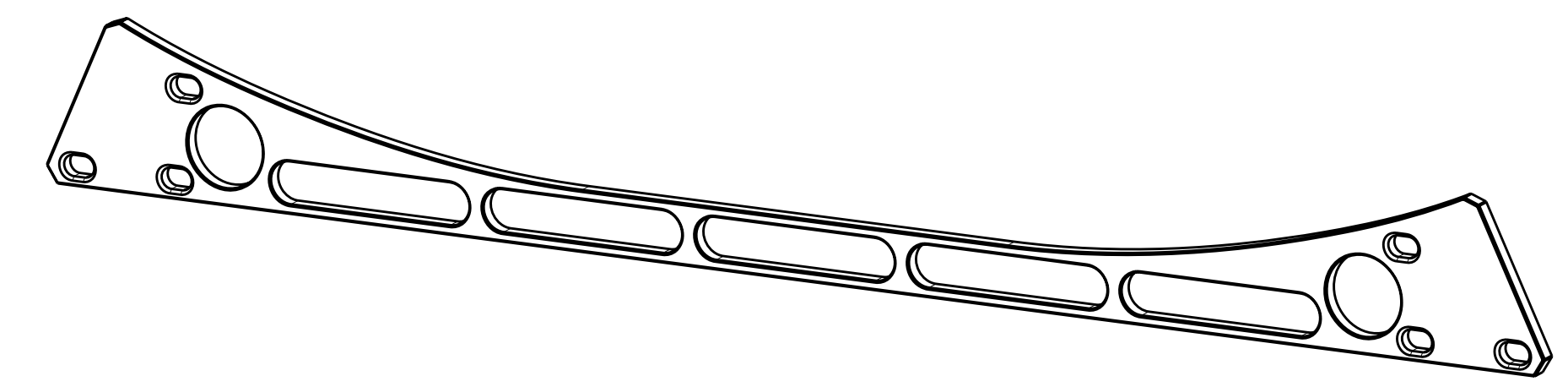
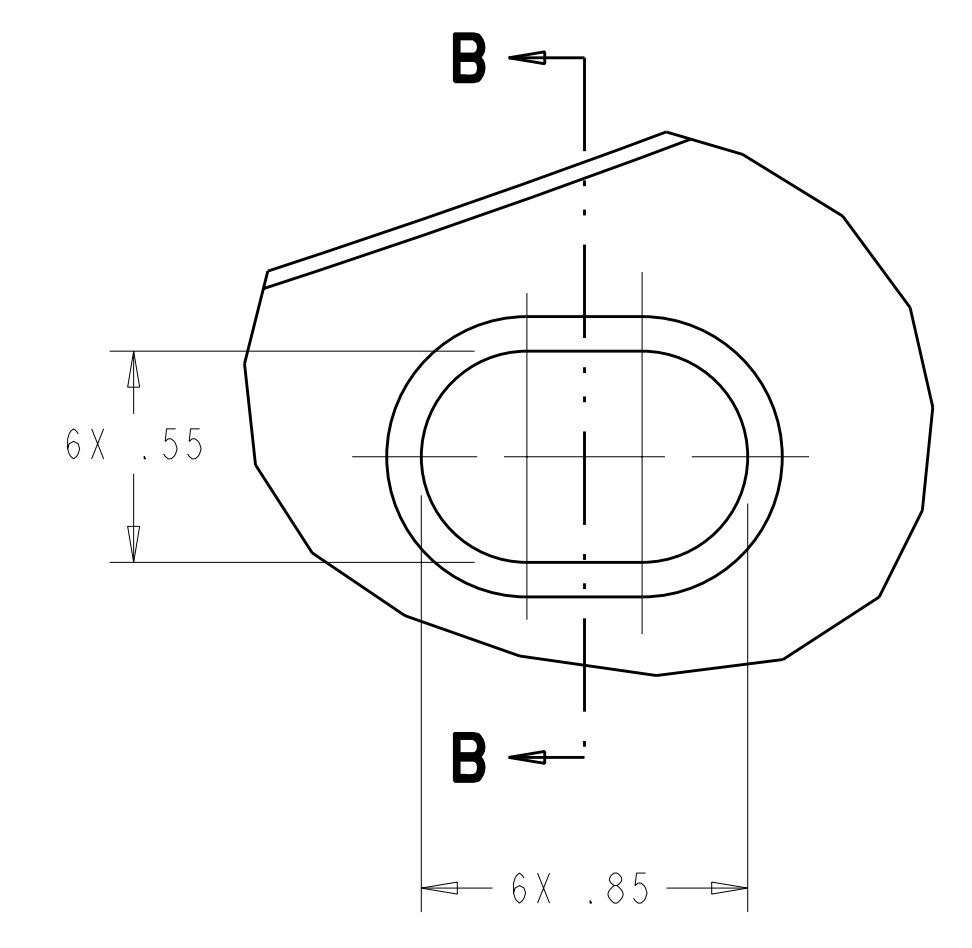


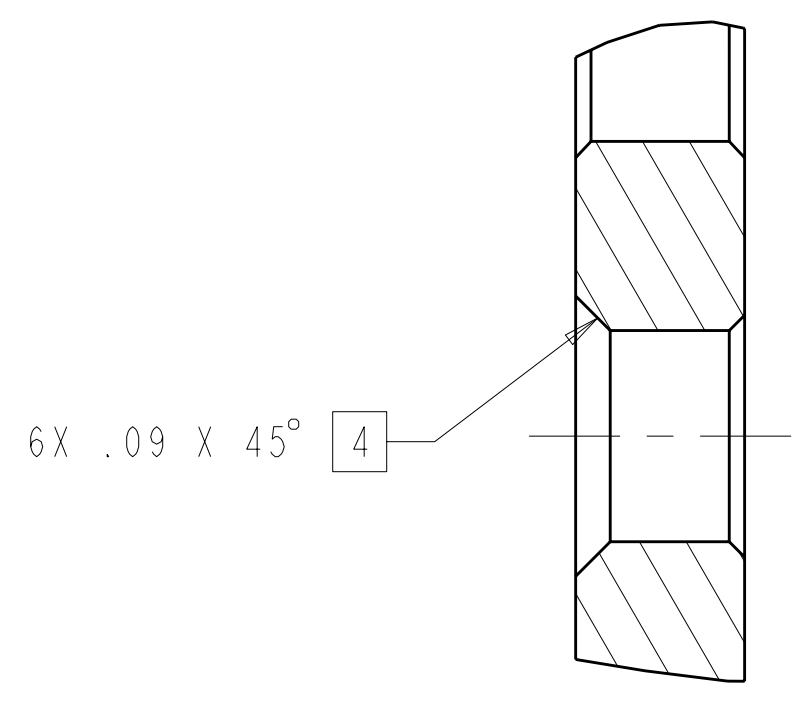
- NOTES
- DRAWING PREPARED IN ACCORDANCE WITH ASME Y14.100-2004.
 - INTERPRET DIMENSIONS AND TOLERANCES PER ASME Y14.5M-1994.
 - DIMENSIONS ARE IN INCHES
 - MACHINE AND COUNTERSINK SLOTS(6) PRIOR TO COATING.
 - MAGNETIC PERMEABILITY NOT TO EXCEED 1.02 AS TESTED BY A SEVERN INDICATOR. AVAILABLE FROM:
SEVERN ENGINEERING
AUBURN, ALABAMA 36830
WWW.SEVERENGINEERING.COM
 - IF PERMEABILITY SPEC IS NOT ACHIEVED THEN SOLUTION ANNEAL PART PRIOR TO COATING.
 - ALUMINA COATING PER SPECIFICATION NCSX-CSPEC-142-06-00.
 - SURFACE FINISH AFTER COATING 150-500.
SURFACE FINISH ON NON-COATED PART 125 OR LESS UNLESS OTHERWISE SPECIFIED BY COATING SUPPLIER.



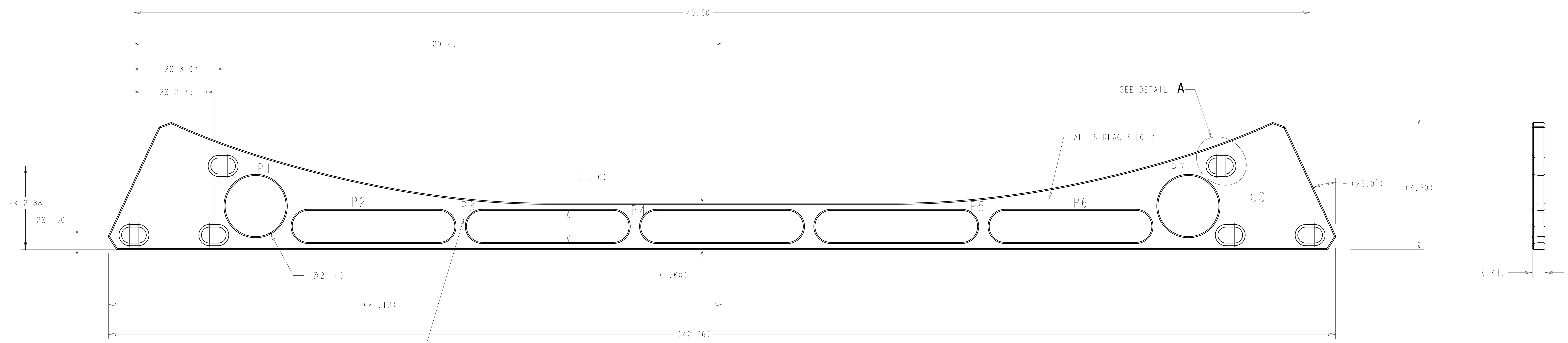
ISOMETRIC VIEW
SCALE 0.25



DETAIL A
SCALE 2.00



SECTION B-B
SCALE 2.00



1 CC INBOARD PUCK RETAINER
SCALE 0.75

NOTE: DIMENSIONS SHOWN ARE AFTER COATING
ALUMINA COATING THICKNESS PER SIDE .025 +.003 / -.002

NOTE: PART TO BE CUT FROM FULL SIZE TEMPLATE CREATED BY DXF FILE SE140-055.DXF, SEE SHEET 2.

ORIENTATION TO DETERMINE PUCK IDENTIFICATION AT INSTALLATION. SEE DRAWING SE140-046 FOR ADDITIONAL INFORMATION

UP ←

AR	CAGE CODE	PART OR IDENTIFYING NO	NOMENCLATURE OR DESCRIPTION	MATERIAL	SPECIFICATION	FIND NO
	-1	CC INBOARD PUCK RETAINER	316L SST [5] PLASMA ALUMINA COATED [6]	ASTM A240		

← NEXT ASSEMBLY

PARTS LIST

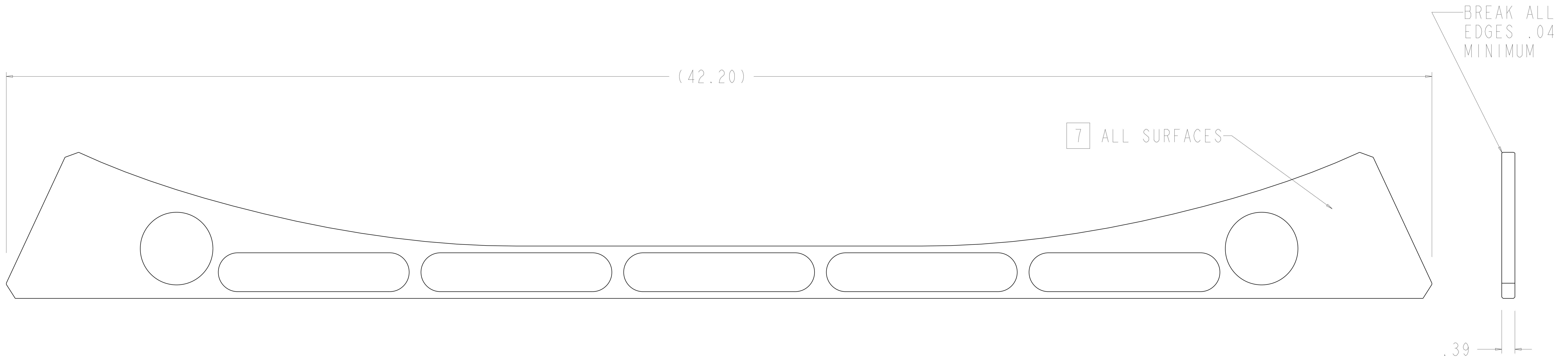
NO REPRESENTATION OR WARRANTY, EXPRESSED OR IMPLIED, IS MADE AS TO THE ACCURACY, COMPLETENESS OR USEFULNESS OF THE INFORMATION OR STATEMENTS CONTAINED IN THESE DRAWINGS, OR THAT THE USE OR DISCLOSURE OF ANY INFORMATION, APPARATUS, METHOD OR PROCESS DISCLOSED IN THESE DRAWINGS MAY NOT INFRINGE PRIVATE RIGHTS OF OTHERS. NO LIABILITY IS ASSUMED WITH RESPECT TO THE USE OF, OR FOR DAMAGES RESULTING FROM THE USE OF, ANY INFORMATION, APPARATUS, METHOD OR PROCESS DISCLOSED IN THESE DRAWINGS. DRAWINGS MADE AVAILABLE FOR INFORMATION TO BIDDER ARE NOT TO BE USED FOR OTHER PURPOSES, AND ARE TO BE RETURNED UPON REQUEST OF THE FORWARDING CONTRACTOR.

P THIS DRAWING PRODUCED ON PRO-ENGINEER

REV	DESCRIPTION	BY	DATE	CHK	DEPT	PE	REQ	DATE	ORNL	DOE	DATE
0	ORIGINAL ISSUE	GM	02/08	MC				02/08			
REVISION OR ISSUE PURPOSE											
REVISION APPROVAL											

SCALE NOTED	DES: D WILLIAMSON 02/2008	DRW: G MCGINNIS 02/2008	CHK: M COLE 02/2008
TOLERANCES UNLESS OTHERWISE SPECIFIED			
FRACTIONS	:	:	:
XX DECIMALS	±.01	:	:
XXX DECIMALS	±.005	:	:
ANGLES	±0.15°	:	:
BREAK SHARP EDGES OR MAX FINISH	±.125 UNLESS OTHERWISE SPECIFIED		
	PPPL DRFT J SIEGEL 02/2008		

Oak Ridge National Laboratory managed for the DEPARTMENT OF ENERGY under U.S. GOVERNMENT contract DE-AC05-00OR22725 UT-BATTELLE, LLC. Oak Ridge, Tennessee			
PROJECT NAME: NATIONAL COMPACT STELLARATOR EXPERIMENT			
C-C INBOARD PUCK RETAINER			
VERSION NO.	PLANT	BLDG	FL
17	ORNL	5700	3
SHT OF	TYPE	CLASS	U
2	S		
RELEASE LEVEL	SE140-055		
WIP			
REV	0		



NOTE: DIMENSIONS SHOWN AND SIZE OF DXF FILE IS FOR NON-COATED PART

FULL SIZE TEMPLATE - CREATED FROM DXF FILE SE140-055.DXF
 SCALE 1 : 1

NOTE: PART SIZE AND HOLE LOCATIONS MUST NOT DEVIATE FROM
 DXF FILE BY MORE THAN $\pm .03$

UT-BATTELLE		Oak Ridge National Laboratory managed for the DEPARTMENT OF ENERGY U.S. GOVERNMENT contract DE-AC05-00OR21725 UT-BATTELLE, LLC, Oak Ridge, Tennessee			
NATIONAL COMPACT STELLARATOR EXPERIMENT					
C-C INBOARD PUCK RETAINER					
VERSION NO	PLANT	BLDG	FL	SHT	OF TYPE
17	ORNL	5700	3	2	2 S
RELEASE LEVEL		SE140-055			
WIP		0			