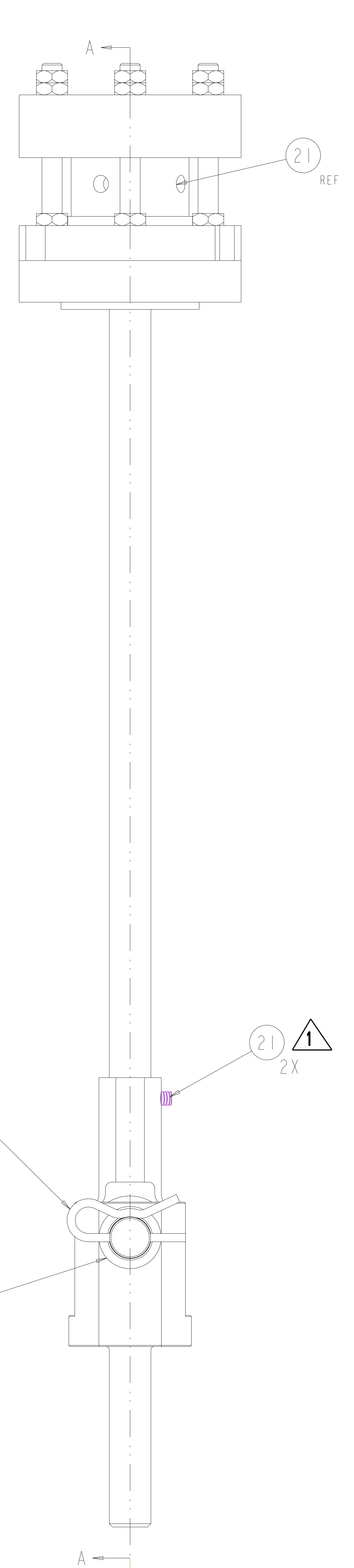
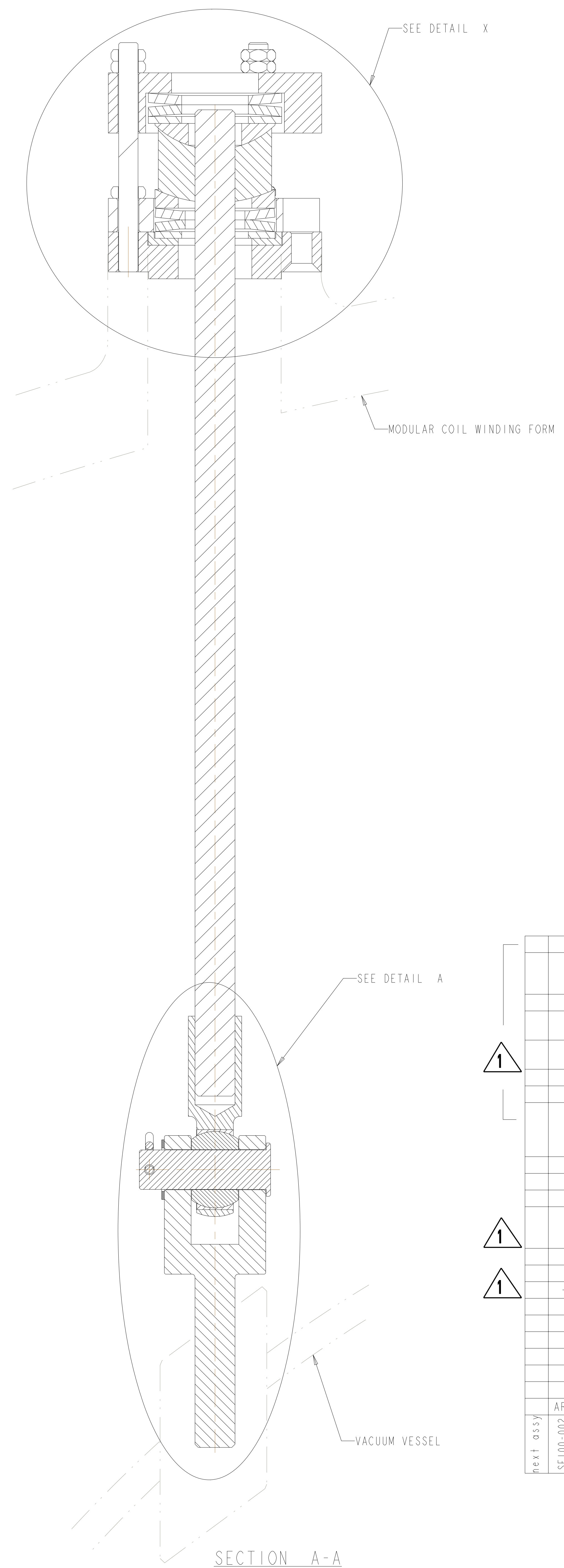


1 DETAIL X  
 SCALE 2.00



1 SCALE: 1.00



ISOMETRIC VIEW  
 SCALE 0.50

- NOTES:
1. INTERPRET DIMENSIONS AND TOLERANCES PER ANSI Y14.5M
  2. DIMENSIONS ARE IN INCHES
  3. DIMENSIONS APPLY AT TEMPERATURE OF 20-30°C (68-86°F)
  4. APPROXIMATE TOTAL WEIGHT = 10 lbs
  5. MAGNETIC PERMEABILITY SHALL NOT EXCEED 1.02 AS TESTED ON A SEVERN INDICATOR AVAILABLE FROM :  
 SEVERN ENGINEERING  
 555 OLD STAGE ROAD  
 AUBURN, ALABAMA 36830

REV	DESCRIPTION	BY	DATE	CHK	DEPT	DATE	PE	REQ	DATE	ORNL	DOE	DATE
1	REVISE ASM AND DRAWING PER ECN 5283	GLL	09-07	MJC			PG					
0	ORIGINAL ISSUE	GHJ	03/3/05									
REV	DESCRIPTION	BY	DATE	CHK	DEPT	DATE	PE	REQ	DATE	ORNL	DOE	DATE
REVISION OR ISSUE PURPOSE												

QTY	PART OR IDENTIFYING NO	NOMENCLATURE OR DESCRIPTION	MATERIAL	SPECIFICATION	FIND NO
3	SE124-075	VERTICAL UPPER SUPPORT STUD			22
2	#92313A535	1/4-20 UNC X .375 LMG SET SCREW	MCMMASTER-CARR P.O. BOX 549670 LOS ANGELES, CA. 90054-0960		21
1	SE124-081	2.500 X 1.25 ID X .125 THK FLAT WASHER	UNS 31600	ANSI B18.22.1	20
2	SE124-079	2.50D X 1.25 ID DISC SPRING	KEY BELLEVILLE K2500-M-175-1		19
2	SE124-082	2.25 OD X 1.125 ID DISC SPRING	KEY BELLEVILLE K2250-L-168-1		18
1	SE124-078	2.25 OD X 1.25 ID X .125 THK FLAT WASHER	UNS S31600	ANSI B18.22.1	17
1	SE124-076	VERTICAL UPPER SUPPORT SPACER			16
1	#92391A778	HAIRPIN COTTER PIN	MCMMASTER-CARR P.O. BOX 549670 LOS ANGELES, CA. 90054-0960		15
1	Ø .75	WASHER, FLAT	300 SERIES SST	ANSI B18.22.1	14
1	SE124-069	VERTICAL UPPER SUPPORT INSULATION WASHER			13
1	SE124-068	VERTICAL UPPER SUPPORT INSULATION SPHERICAL WASHER			12
9	#94805A217	VERTICAL UPPER SUPPORT JAM NUT	MCMMASTER-CARR P.O. BOX 549670 LOS ANGELES, CA. 90054-0960		11
1	SE124-065	VERTICAL UPPER SUPPORT INSERT			10
1	SE124-055	VERTICAL SUPPORT CLEVIS			9
3	SE124-037	VERTICAL UPPER SUPPORT STUD			8
1	SE124-036	VERTICAL UPPER SUPPORT RETAINER RING			7
1	SE124-034	VERTICAL UPPER SUPPORT SPHERICAL NUT			6
1	SE124-033	VERTICAL UPPER SUPPORT SPHERICAL BEARING			5
1	SE124-020	VERTICAL UPPER SUPPORT ROD			4
1	SE124-014	VERTICAL SUPPORT ROD END, FEMALE			3
1	SE124-013	VERTICAL SUPPORT CLEVIS PIN			2
1	-1	VERTICAL UPPER SUPPORT ASSEMBLY			1

next assy  
 SE100-002

SCALE NOTED  
 TOLERANCES UNLESS OTHERWISE SPECIFIED  
 FRACTIONS :  
 XX DECIMALS ± .01  
 XXX DECIMALS ± .005  
 ANGLES ±0°15'  
 BREAK SHARP EDGES .06 MAX  
 FINISH .125 UNLESS OTHERWISE SPECIFIED

DES: PAUL MILLER 08-17-04  
 DRW: PAUL MILLER 08-17-04  
 CHK: J.M. RAY 04-07-05

UT-BATTELLE  
 NATIONAL COMPACT STELLARATOR EXPERIMENT

VERTICAL UPPER SUPPORT ASSEMBLY

VERSION NO. 6+  
 PLANT X10  
 BLDG 5700  
 FL 3  
 SHT OF 1  
 TYPE I  
 CLASS A

RELEASE LEVEL WIP  
 SE124-051

NO REPRESENTATION OR WARRANTY, EXPRESSED OR IMPLIED, IS MADE AS TO THE ACCURACY, COMPLETENESS OR USEFULNESS OF THE INFORMATION OR STATEMENTS CONTAINED IN THESE DRAWINGS, OR THAT THE USE OR DISCLOSURE OF ANY INFORMATION, APPARATUS, METHOD OR PROCESS DISCLOSED IN THESE DRAWINGS MAY NOT INFRINGE PRIVATE RIGHTS OF OTHERS. NO LIABILITY IS ASSUMED WITH RESPECT TO THE USE OF, OR FOR DAMAGES RESULTING FROM THE USE OF, ANY INFORMATION, APPARATUS, METHOD OR PROCESS DISCLOSED IN THESE DRAWINGS. DRAWINGS MADE AVAILABLE FOR INFORMATION TO BIDDER ARE NOT TO BE USED FOR OTHER PURPOSES, AND ARE TO BE RETURNED UPON REQUEST OF THE FORWARDING CONTRACTOR.

**P** THIS DRAWING PRODUCED ON PRO-ENGINEER

REV	DESCRIPTION	BY	DATE	CHK	DEPT	DATE	PE	REQ	DATE	ORNL	DOE	DATE
1	REVISE ASM AND DRAWING PER ECN 5283	GLL	09-07	MJC			PG					
0	ORIGINAL ISSUE	GHJ	03/3/05									
REV	DESCRIPTION	BY	DATE	CHK	DEPT	DATE	PE	REQ	DATE	ORNL	DOE	DATE
REVISION OR ISSUE PURPOSE												

H  
G  
F  
E  
D  
C  
B  
A