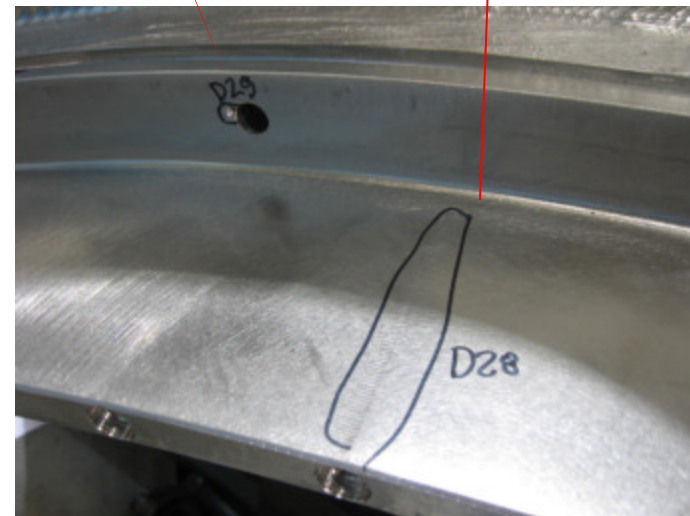
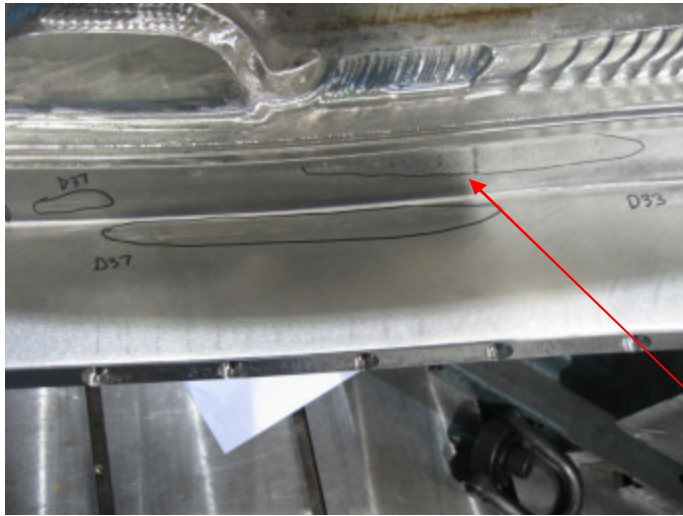


Shallow tool gouges on D side short leg (D16-D18) and long leg (D76-D78)



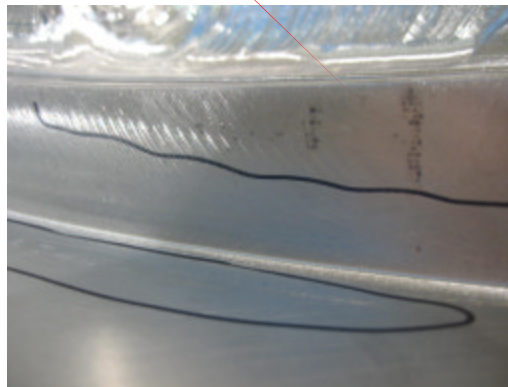


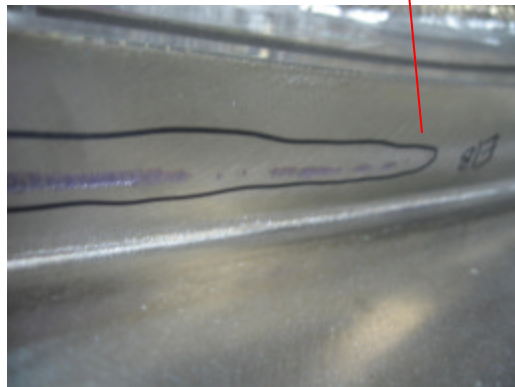
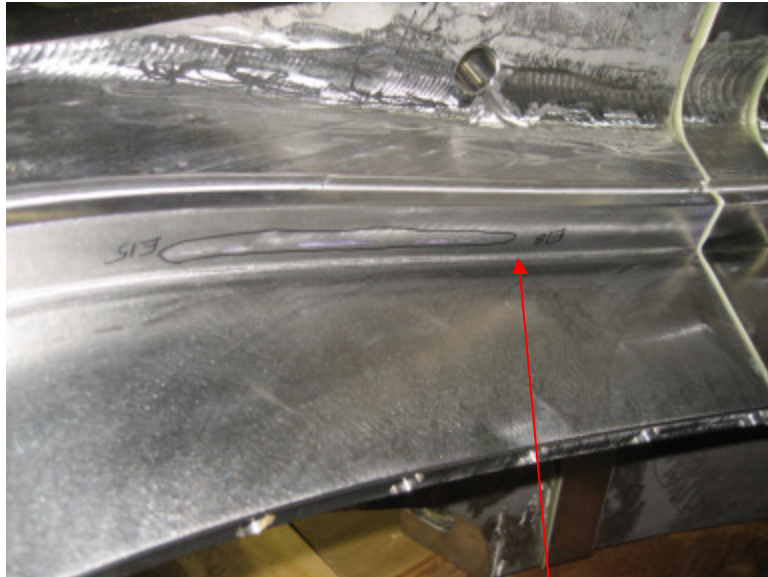
D29 is a tool gouge on the edge of the VPI bleed hole ($\text{Ø}.218''$ x $.06''$ deep). All other tool marks on this page are very shallow ($<.005''$)



D33 through D37 are shallow tool marks on the long and short side of Datum D.

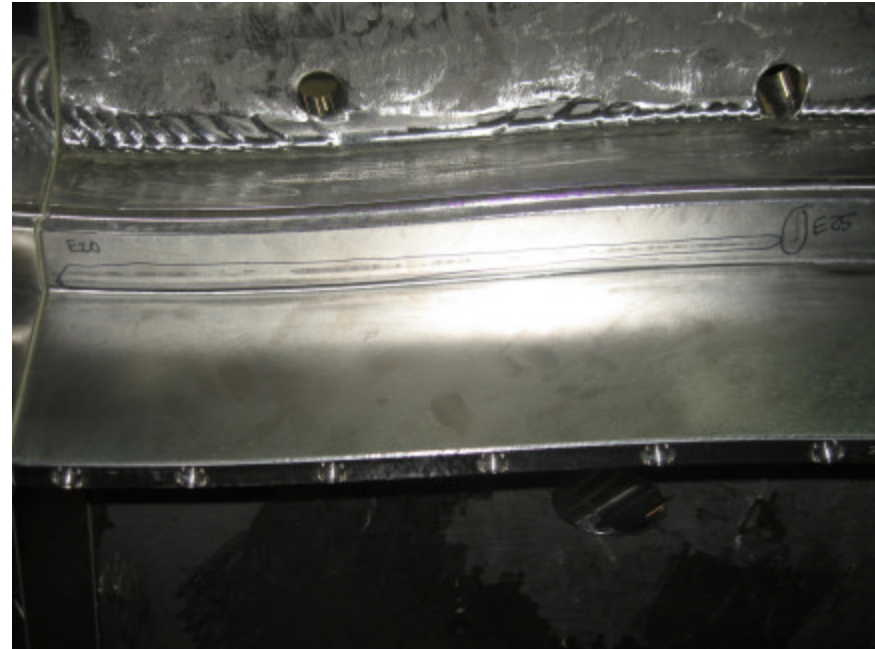
These tool marks are also $<.005''$.





E side tool marks on short leg from
E15 to E18 and E20 to E25 (these are
left and right of the break).

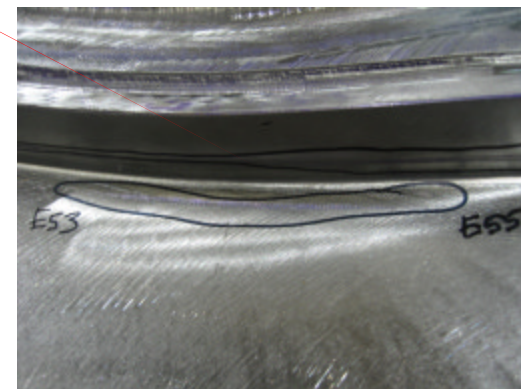
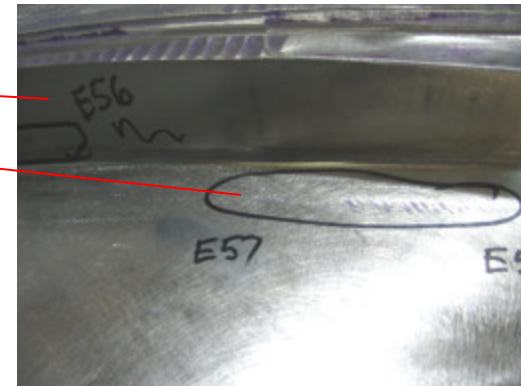
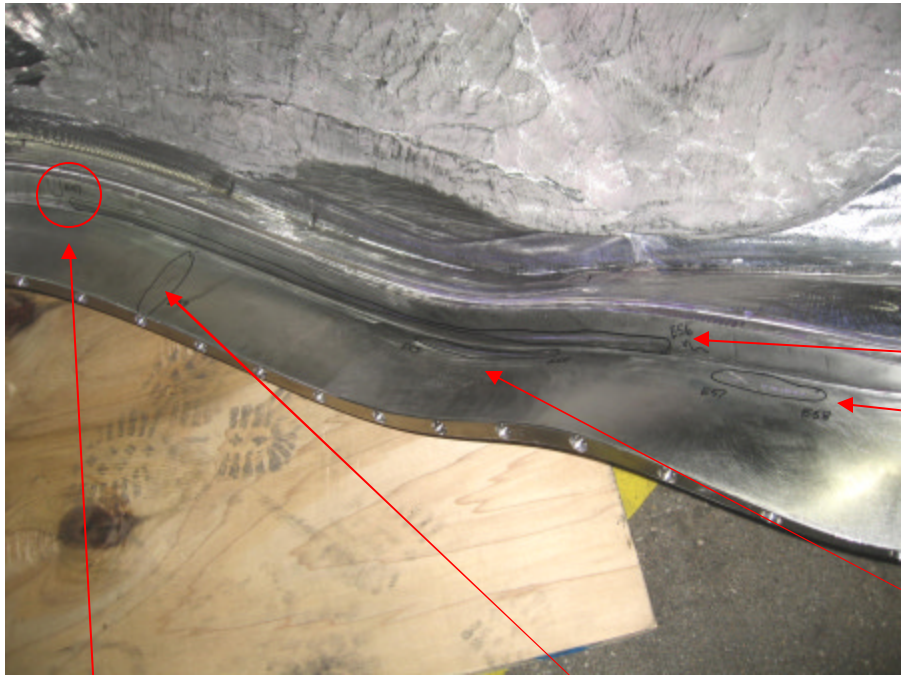
<.005" deep

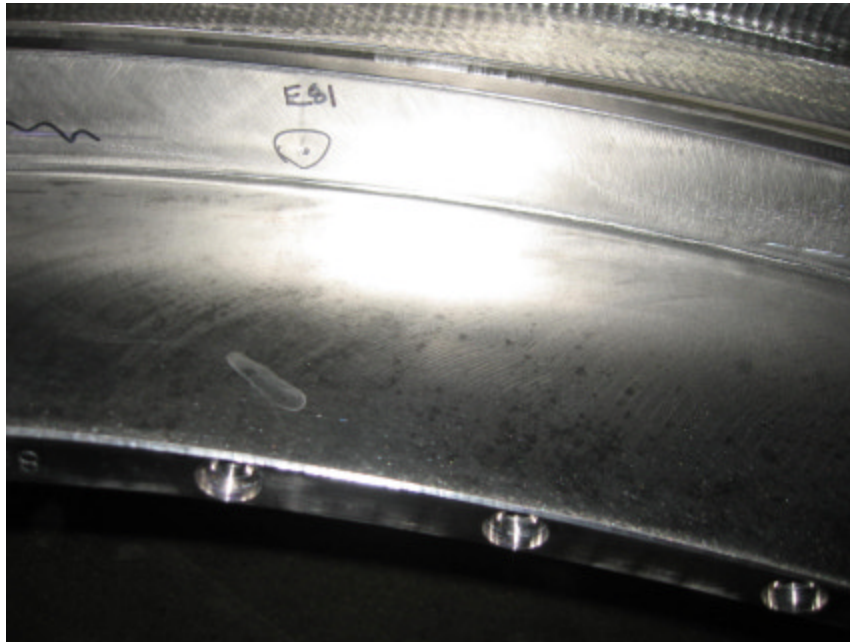




NC21482 – A6 Visual Review

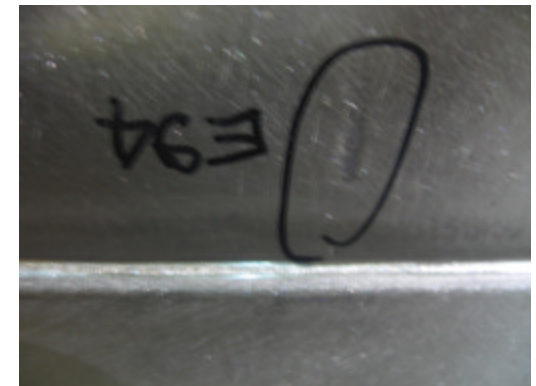
This slide shows several areas where tool marks did not clean up from E47 to E58 on both the long and short legs of the T section. All are less than .010" deep.





Small tool gouges near holes 81
and 94 on short leg of E side.

(<.010" deep)

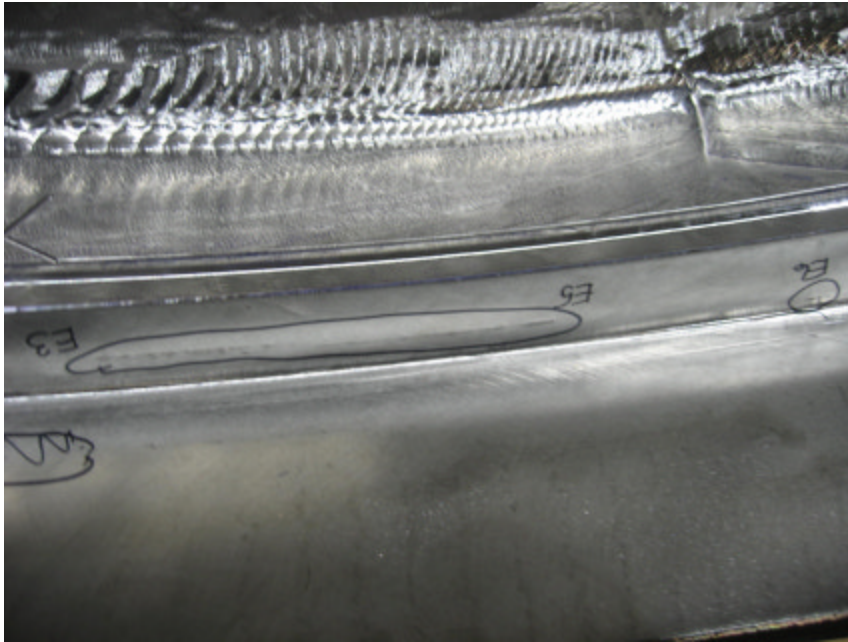




Three separate areas of cutter non-cleanup
on D side short leg between T section holes
84 thru 89

(<.010" deep)





Tool non-cleanup between T holes
3 and 6 on the short leg of the
datum E side
($<.005''$ deep)





D side undercut

Long Leg - Hole #36 to #39 is .010 to .011

Short Leg - Hole #16 to #19 is .010 to .015