

# SUPPLIER NONCONFORMANCE REPORT

Date 5/9/08

Number: 1160

---

Company: Vulcan Products Co.

PPPL PO# PE007970-W

Item Drawing/Part# SE185-311 Part 02

Job Description: NCSX FPA Station 3 Fixture

Hold Tag Applied? Yes

---

NONCONFORMING CONDITION (include requirement(s) violated):

Drawing calls for ASTM A36 material. Vulcan ordered A36 material with certification. The certification provided does not identify any standard other than "commercial quality" and lists no mechanical properties. The listed chemistry conforms to A36.

Reported By D. Barber - Vulcan

Date 5/9/08

---

RECOMMENDED DISPOSITION (include actions to prevent recurrence):

Use-As-Is

Reject

Disposition By: \_\_\_\_\_

Date \_\_\_\_\_

---

PPPL Concurrence \_\_\_\_\_

Date \_\_\_\_\_

Cognizant Engineer (COG)

PPPL Concurrence \_\_\_\_\_

Date \_\_\_\_\_

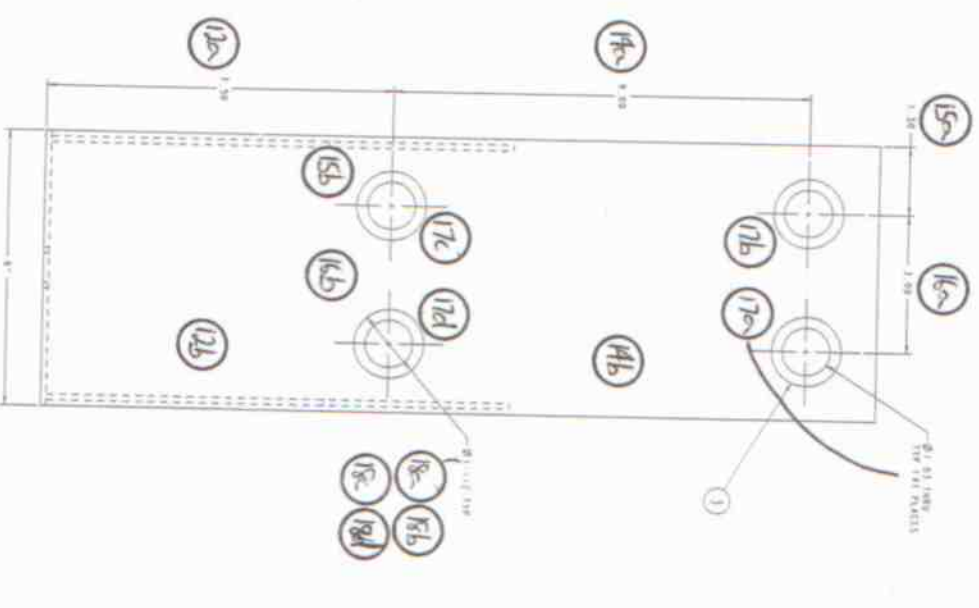
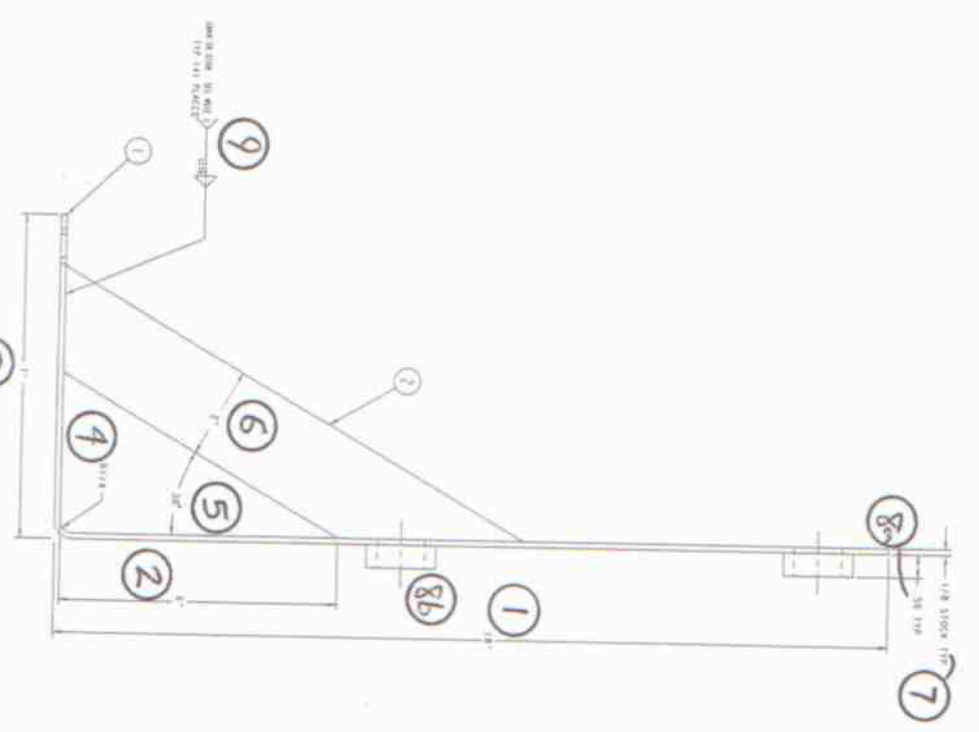
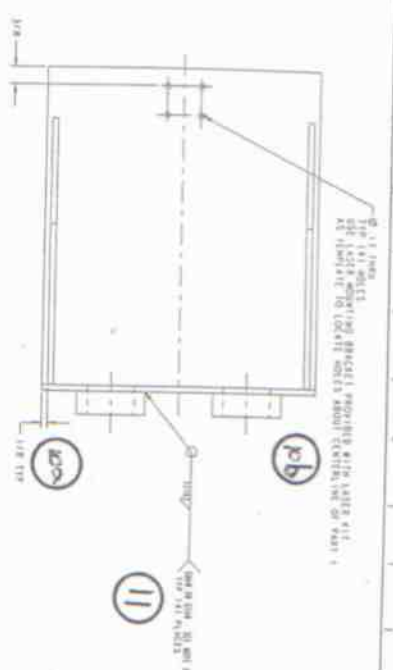
Responsible Line Manager (RLM)

DISTRIBUTION

Dwg. No.	Rev.	P.O. No.	Rec No.	Qty. Rec'd	Date Prep	Date Comp.	%	Qty. Scrap
SE185-311	0	AE007970-W		1	05-07-07			
Part Name <i>Rear Laser Rev</i>	Location	Vendor		Qty. Insp.	Prep By	Comp. By		Qty. RTU
<i>Mounting Bracket Weld</i>		<i>cust</i>		1	<i>du5</i>			
Work Order No.	Oper. Next Oper.	Vendor Part No.		Qty. Rej.	Verif. By	Rework \$	Scrap \$	Qty. Acc.
<i>030A91-006</i>	<i>Rev. Prod.</i>	<i>cust</i>	<i>SE185-311-02</i>	1	<i>du5</i>			
ITEM	REQUIREMENT/INSPECTION RESULTS		CLASS	DISPOSITION/INSTRUCTIONS		DISP. APPROVAL DATE		
1.	<i>Required material per drawing is 1/8 THK ASTM A36.</i>			<i>VPC is submitting this report as a nonconformance.</i>		<i>Inspection</i> <i>By MRB/sjbs</i>		
	<i>Material certifications on hand do not show that material is certified to A36.</i>			<i>would like to manufacture and ship with "as is" material.</i>		QUALITY ENGR.		
	<i>1 1/2" x 6 FB.</i>					DESIGN ENGR.		
						PROCUREMENT		
						PLANNING		
						REWORK COMP BY		
						MFG. INSP		
RESPONSIBLE ORG.								
<input type="checkbox"/> ENGINEERING <input type="checkbox"/> PLANNING <input type="checkbox"/> TOOL DESIGN <input type="checkbox"/> MACH SHOP <input type="checkbox"/> FAB SHOP <input type="checkbox"/> ASSEMBLY <input type="checkbox"/> INSPECTION <input type="checkbox"/> PROD. CONTROL <input type="checkbox"/> VENDOR <input type="checkbox"/> PROCUREMENT								
RESP. ORG. SIGNATURE								

CAUSE AND CORRECTIVE ACTION

- RD was written correct in ordering A36 material*
- Corrective Action to Supplier to:*
  - Send material that is ordered on VPC RD.*
  - Provide material sets in a timely fashion.*



02 ASSEMBLY - REAR LASER PEN MOUNTING BRACKET WELDMENT  
SCALE: 1:1000

VPC v/c 03091-006

FOR NOTTS AND B/M SEE SHEET 1

© 2008 Lockheed Martin

NO.	DESCRIPTION	DATE	BY	CHKD.
1	ISSUED FOR FABRICATION	03/09/11	W.P.C.	A.P.
2	REVISED TO ADD DIMENSIONS	03/09/11	W.P.C.	A.P.

REVISIONS	DATE	BY	CHKD.
1	03/09/11	W.P.C.	A.P.
2	03/09/11	W.P.C.	A.P.

APPROVED FOR FABRICATION	DATE	BY
W.P.C.	03/09/11	W.P.C.

REVISIONS	DATE	BY	CHKD.
1	03/09/11	W.P.C.	A.P.
2	03/09/11	W.P.C.	A.P.

**Metallurgical Test Report**

J. Steelberg Supply, Inc. certifies materials are melted and manufactured in the USA unless specified as Import, Unknown, or left blank in the column "Originating Mill".

Vendor:

**J. Steelberg Supply, Inc.**  
 P.O. Box 366  
 Payson UT 84651

1045  
**Northwest Steel & Pipe**  
 P.O. Box 11247  
 Tacoma WA 98411

Same

Shipped

J. Steelberg Delivery Number: 7717	Purchase Order Number 1598	Date of Shipment 1/31/2008
------------------------------------	----------------------------	----------------------------

Heat	Specification	Originating Mill
20706700	Commercial Quality	
A43638	Commercial Quality	Gallatin
C43596	Commercial Quality	Gallatin

This report consolidates test reports or material contents per item as shown and held in our records. The chemistries and physicals when required, meet the specification as shown. Transition heats are specified as CQ material with MA heat. Chemistry for transition heats are nominal and show only the data we have available. Buyer assumes all responsibility for end use and application of any materials herein.

*Curt Paulson*  
 Curt Paulson / Quality Assurance

Material Description	Qty / Thickness / Width / Length	Weight	Heat	Mat ID	Test ID	Yield	Tensile	% Elong 2"	% Elong 8"
4bdl 1/8" 6" x 20' HRCQ Strip		8160#	2070670	B194205					
6bdl 1/8" 4" x 20' HRCQ Strip		12036#	A43638	127098					
			C43596	127329					

Chemistries	Heat	C	MN	P	S	SI	CU	NI	CR	MO	SN	AL	N	V	B	TI	CB	AS	CA
20706700	.04	.24	.008	.002	.020	.09	.14	.05	.04	.020	.007	.020	.0097	0.000	.000	.001	0.000		.0014
A43638	.19	.80	.019	.006	.090	.14	.05	.07	.020	.007	.020	.0097	0.000	.001	.005	.001	0.000		.0015
C43596	.05	.29	.010	.006	.020	.11	.04	.05	.020	.007	.020	.0097	0.000	.001	.005	.001	0.000		.0015

Steel Dynamics, Inc.  
4500 Country Road 59  
Butler, IN 46721 USA  
Telephone (260) 868-8000  
Fax (260) 868-8965

# CHEMICAL/PHYSICAL CERTIFICATION



Customer # 76 Part # 030207HRS - 1 PO # 156746 Order # 6 Line Item # 07B194205 Coil # 20706700 Heat # 52,080 Coil Weight (lbs) 52,080

Width (in) 52.23 - mill edge Gauge (in) 0.126 Length(ft) 2,327

Material Specification Hot Rolled Band Product Description Hot Rolled Band

### Ladle Chemical Analysis %

	C	Min	P	S	Si	Al	Cu	Ni	Cr	Mo	Sn	N	V	Nb	Ti	B	Ca	Pb
	0.04	0.24	0.008	0.002	0.02	0.024	0.09	0.03	0.04	0.01	0.006	0.009	0.001	0.000	0.001	0.0060	0.002	0.00

### Mechanical Properties

Yield Strength (PSI) 37,950 Tensile Strength (PSI) 60,304 Percent Elongation 41.0 Rockwell Result 56

Made in the USA  
Shipped from Butler, IN, United States  
Milled, thin slab cast and rolled by proud Americans in Butler, IN.  
All tests were performed according to applicable standards and are correct as contained in the records of this company.

**Physical properties are  
from HEAT ANALYSIS  
ONLY, not a certification.**

Quality Assurance

[https://www.stld.com/butler/customer/reports/report\\_generator.jsp](https://www.stld.com/butler/customer/reports/report_generator.jsp)