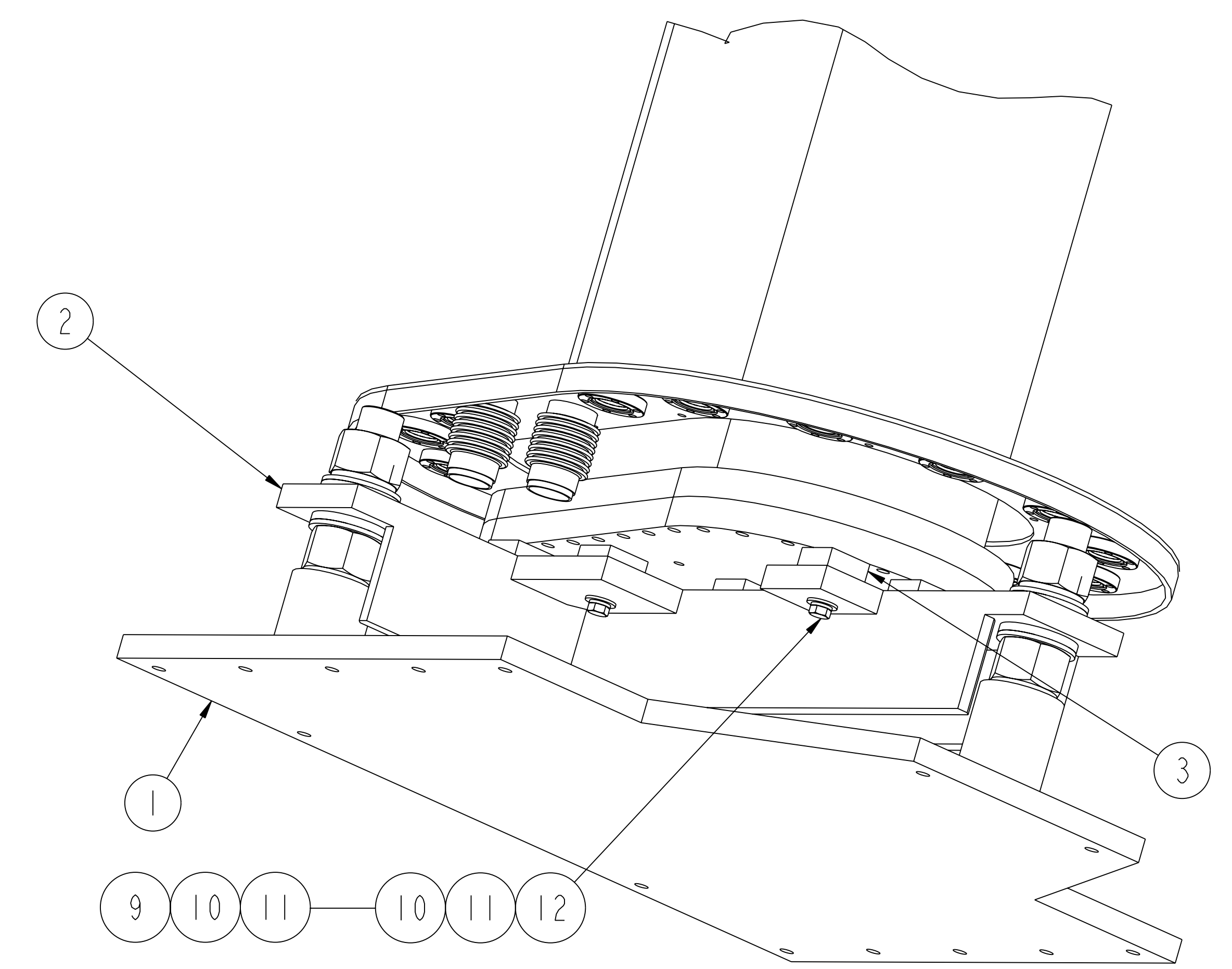
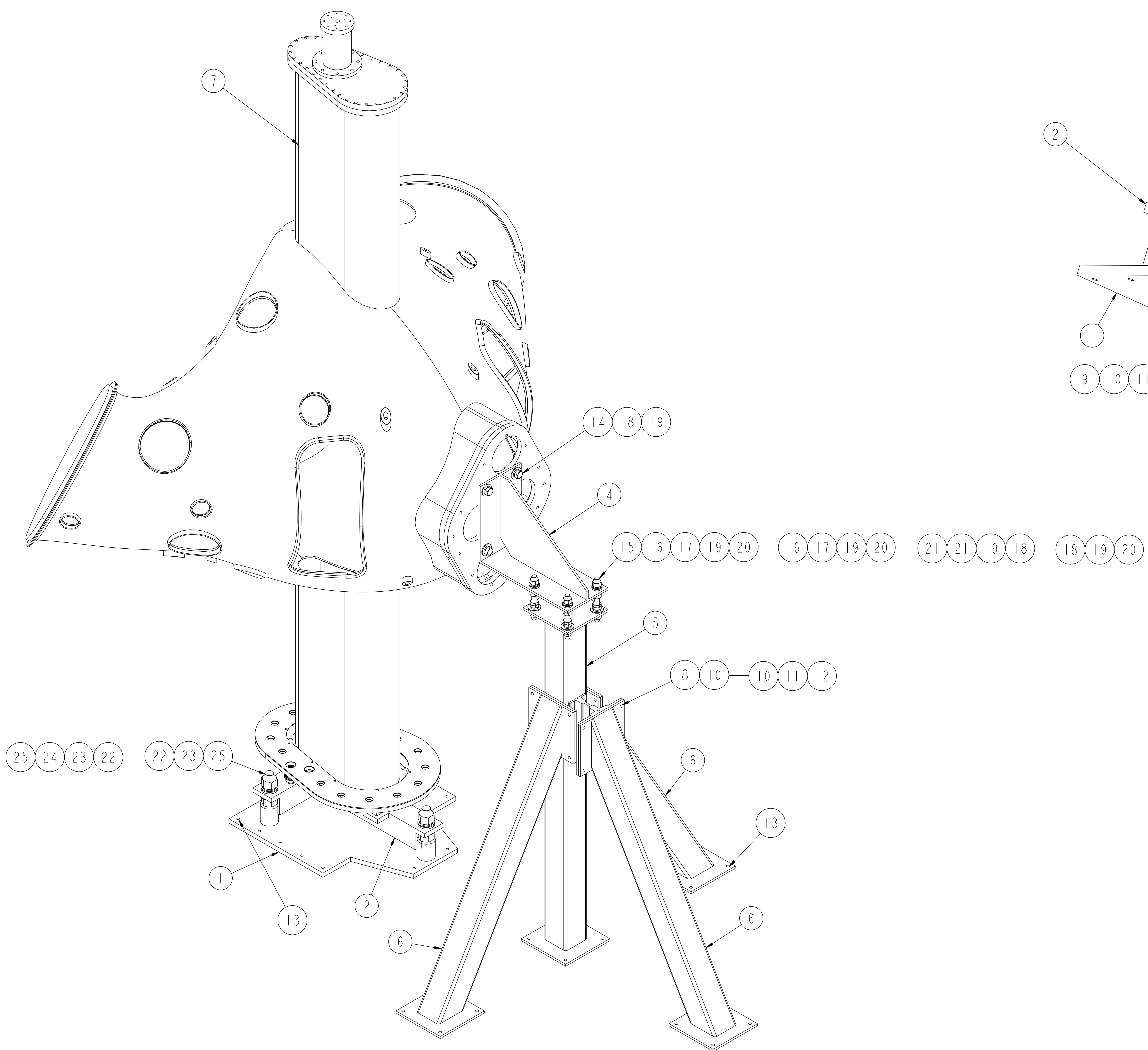


NO.	REVISION	BY	CH	SUP	APPROVED	DATE



PARTIAL VIEW - FOR CLARITY
SCALE 0.250

RELEASED FOR
FABRICATION / INSTALLATION
PPPL Drafting

QTY	PART NO.	DRAWING NO.	NOMENCLATURE OR DESCRIPTION	MATERIAL	QTY RECD
6	25	COMM	1 3/4"-8UNC-2B HEX NUT	C' STL - ZN PLT	
3	24	COMM	1 3/4" SPLIT LOCK WASHER	C' STL - ZN PLT	
6	23	COMM	1 3/4" SPHERICAL WASHER - MALE	STEEL	
6	22	COMM	1 3/4" SPHERICAL WASHER - FEMALE	STEEL	
8	21	COMM	1"-8UNC-2B HEX JAM NUT	C' STL - ZN PLT	
12	20	COMM	1"-8UNC-2B HEX NUT	C' STL - ZN PLT	
12	19	COMM	1" SPLIT LOCK WASHER	C' STL - ZN PLT	
8	18	COMM	1" (NOM) FLAT WASHER	C' STL - ZN PLT	
8	17	COMM	1" SPHERICAL WASHER - MALE	STEEL	
8	16	COMM	1" SPHERICAL WASHER - FEMALE	STEEL	
4	15	THIS DWG	1"-8UNC-2A x 10" LG THREADED ROD	C' STL - ZN PLT	
4	14	COMM	1"-8UNC-2A x 3" LG HEX HD BOLT	C' STL - ZN PLT	
22	13	COMM	1/2" CONCRETE ANCHOR BOLT/NUT 5 1/2" LG	STEEL	
20	12	COMM	1/2-13UNC-2B HEX NUT	C' STL - ZN PLT	
28	11	COMM	1/2 SPLIT LOCK WASHER	C' STL - ZN PLT	
34	10	COMM	1/2 (NOM) FLAT WASHER	C' STL - ZN PLT	
8	9	COMM	1/2-13UNC-2A x 5 1/2" LG HEX HD BOLT	C' STL - ZN PLT	
12	8	COMM	1/2-13UNC-2A x 2" LG HEX HD BOLT	C' STL - ZN PLT	
1	7	SE121-009	VVSA ASSEMBLY- PHASE 3		
3	6	SE184-056-03	OUTRIGGER WELDMENT		
1	5	SE184-056-02	VERTICAL SUPPORT WELDMENT		
1	4	SE184-056-01	SUPPORT BRACKET WELDMENT		
8	3	SE184-052-7	SHIM BLOCK		
1	2	SE184-052-01	SUPPORT "TEE" BAR WELDMENT		
1	1	SE184-051-01	BASE SUPPORT WELDMENT		
1		THIS DWG	VACUUM VESSEL SUPPORT FIXTURE ASSEMBLY		1

QTY	PART NO.	DRAWING NO.	NOMENCLATURE OR DESCRIPTION	MATERIAL	QTY RECD
PARTS LIST					
COMPUTER GENERATED DRAWING MANUAL CHANGES NOT PERMITTED Pro E		CENTRAL FILES: UNLESS OTHERWISE SPECIFIED DIMENSIONS ARE IN INCHES MACHINE SURFACES BREAK SHARP EDGES .005/.020	PRINCETON PLASMA PHYSICS LABORATORY PRINCETON UNIVERSITY NATIONAL COMPACT STELLARATOR EXPERIMENT FIELD PERIOD ASSEMBLY VACUUM VESSEL SUPPORT ASSEMBLY VACUUM VESSEL SUPPORT FIXTURE ASSEMBLY		
DO NOT VERIFY INFORMATION BY SCALING DRAWING		TOLERANCES NON-CUMULATIVE DECIMAL-INCH FRACTIONS .XX +/- .030 .XXX +/- .005 ANGULAR +/- .015	DSN: L. MORRIS CHK: M. COLE ENGR: T. BROWN SUPV: J. SEIGEL	8-2-2007 8-2-2007 8-2-2007 8-2-2007	DRAWING NO: SE184-050 SHEET 1 OF 1 REV 0.8

RELEASE LEVEL: Fabrication
DWG VERSION NO: 26

WEIGHT
9377.7 lbs
MODEL NAME
SE184-050-01
WELDING ENGINEER

NCSX-SE184-050