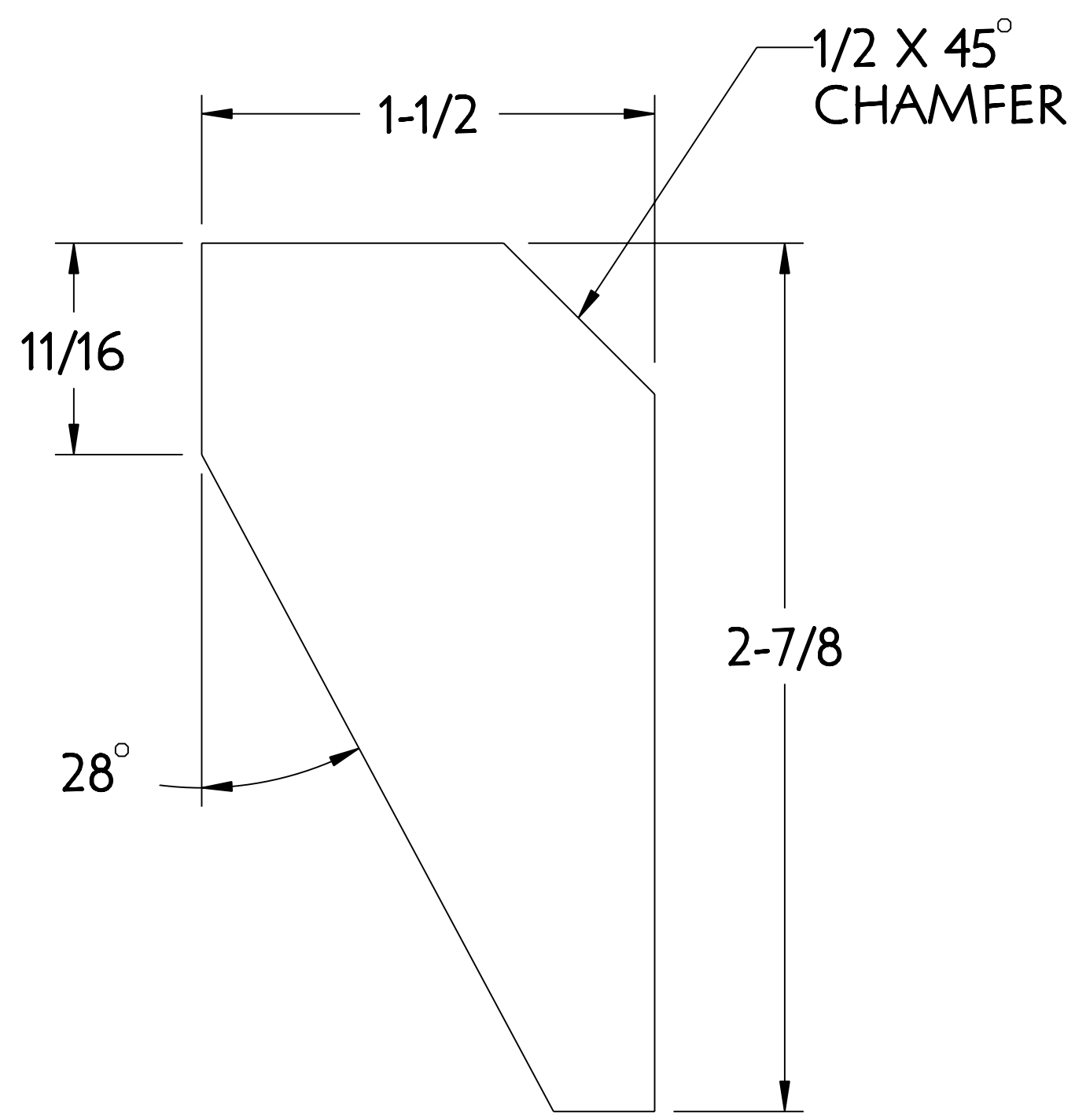


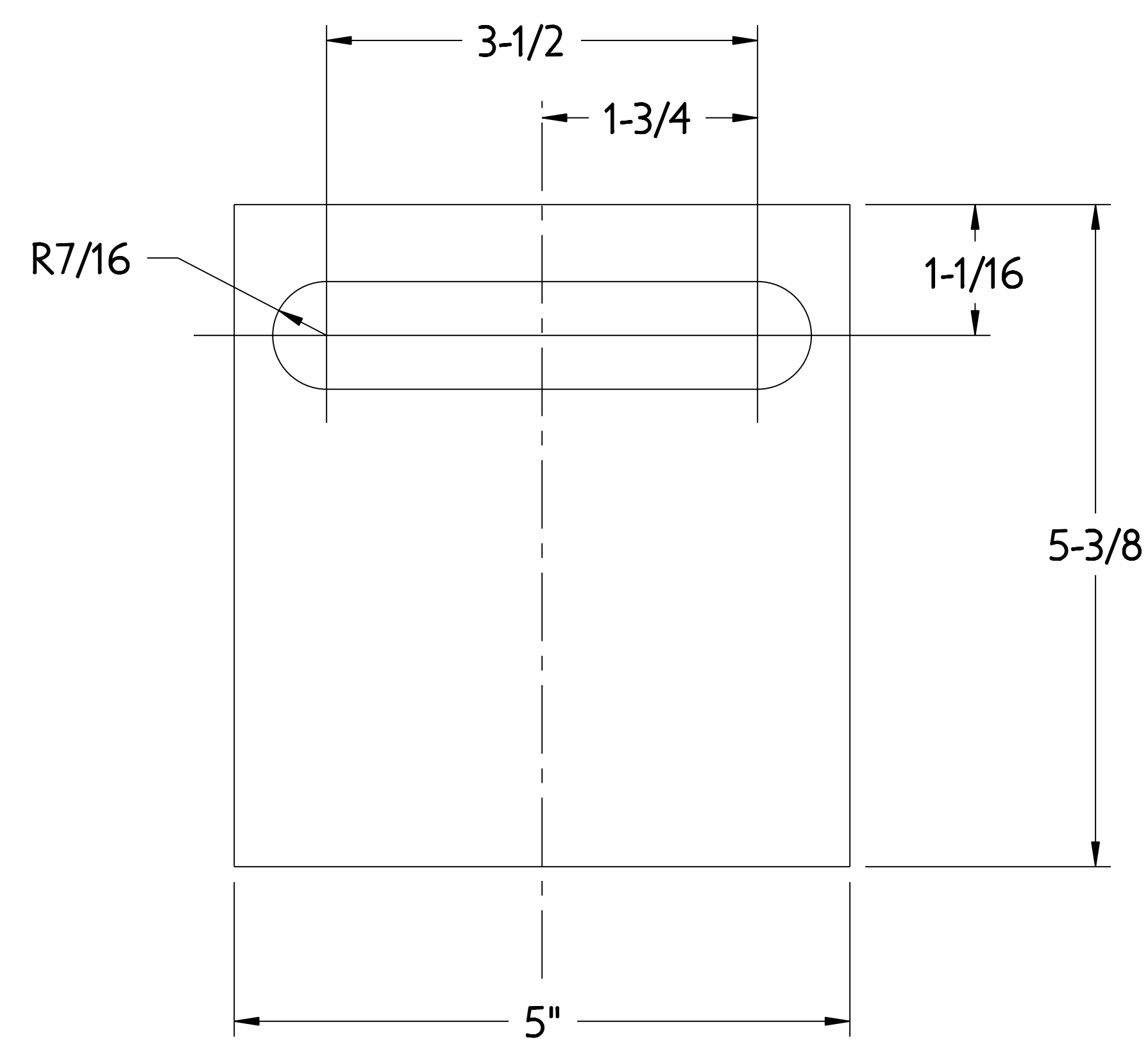
NO.	REVISION	BY	CH	SUP	APPROVED	DATE



1

**GUSSET**

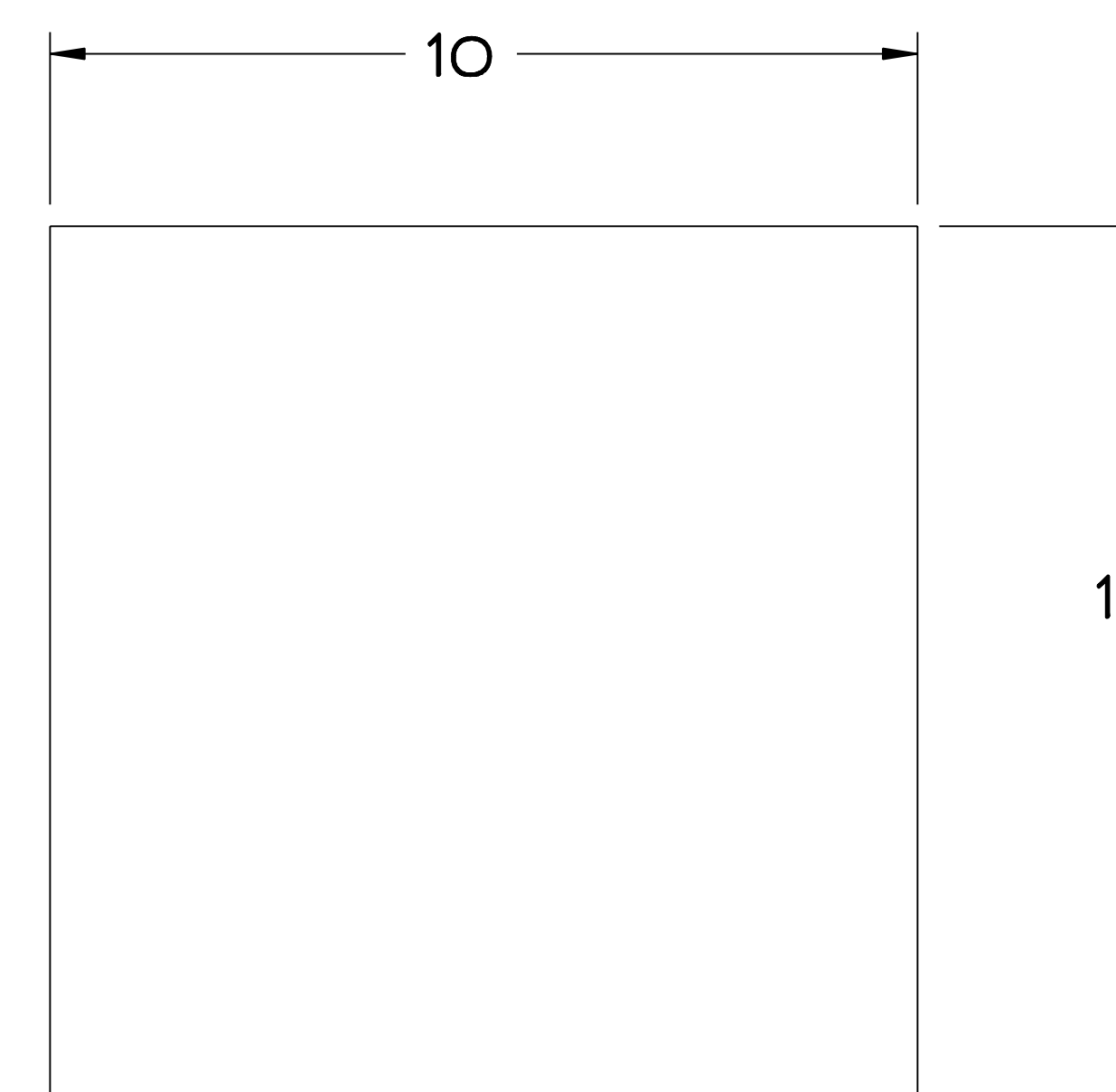
**MAKE FROM 1 1/2 X 3 X 1/2 THK PLATE**



2

**STABILIZER PLATE**

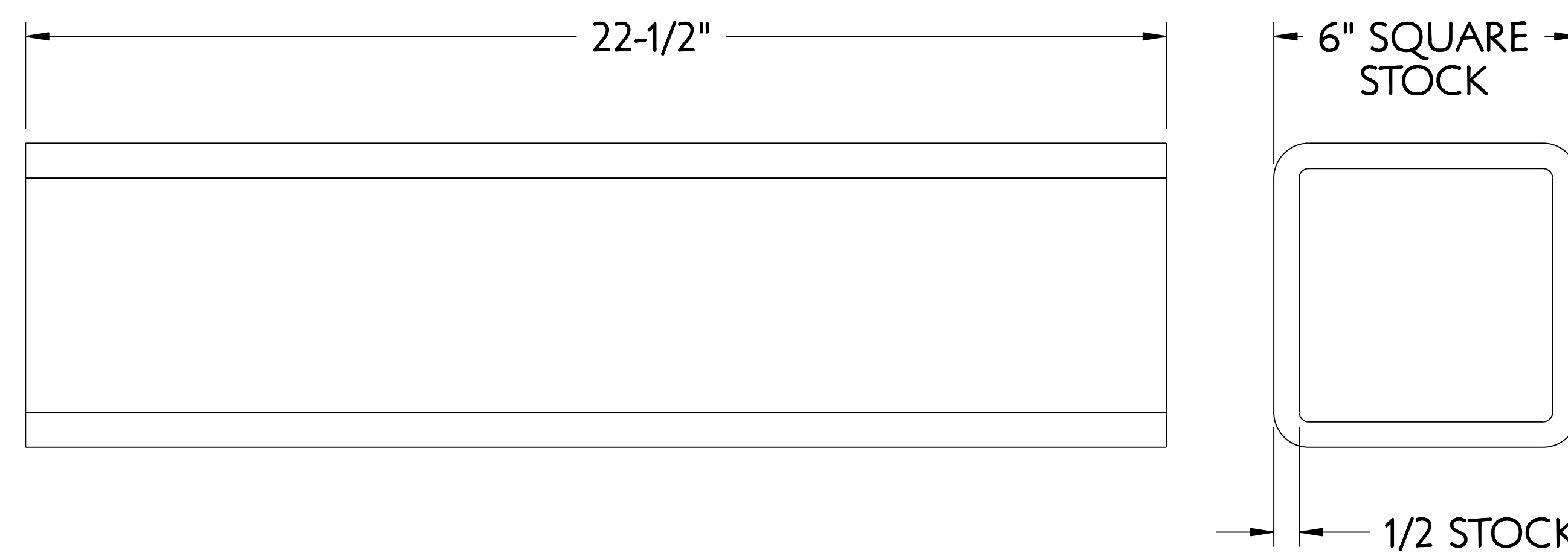
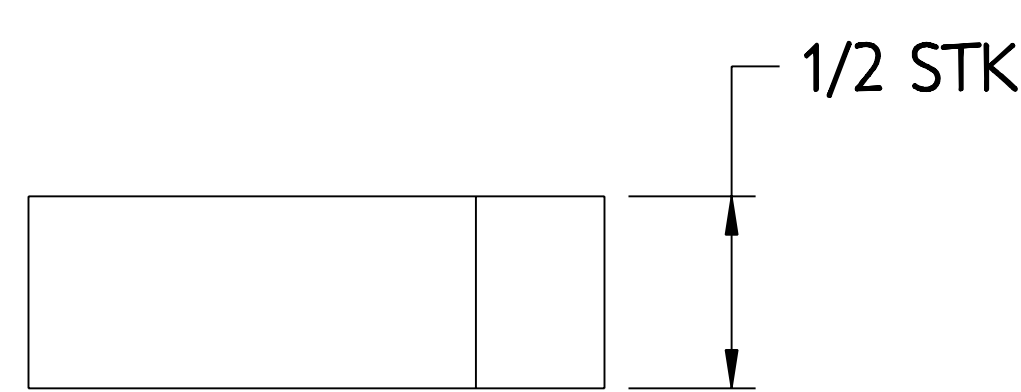
**MAKE FROM 6 X 6 X 1/2 THK PLATE**



3

**TOP PLATE**

**MAKE FROM 10 X 10 X 1/2 THK PLATE**



5

**SUPPORT POST**

**MAKE FROM 6" SQUARE TUBE**

**RELEASED FOR  
FABRICATION / INSTALLATION**  
 PPPL Drafting

PART NO.	DRAWING/MODEL NO	NOMENCLATURE OR DESCRIPTION	MATERIAL	QTY RECD
5	SE186-328-5	SUPPORT POST	ASTM A36	
3	SE186-328-3	MCWF SEGMENT TOP PLATE LARGE	ASTM A36	
2	SE186-328-2	MCWF SEGMENT SUPPORT LOCKING PLATE	ASTM A36	
1	SE186-328-1	MCWF SEGMENT SUPPORT GUSSET PLATE	ASTM A36	

PARTS LIST

COMPUTER GENERATED DRAWING MANUAL CHANGES NOT PERMITTED	PRO E	CENTRAL FILES: UNLESS OTHERWISE SPECIFIED	PRINCETON PLASMA PHYSICS LABORATORY PRINCETON UNIVERSITY	
DO NOT VERIFY INFORMATION BY SCALING DRAWING		DIMENSIONS ARE IN INCHES MACHINE SURFACES UNLESS OTHERWISE SPECIFIED	NATIONAL COMPACT STELLARATOR EXPERIMENT	
		TOLERANCES NON-CUMULATIVE	STELLARATOR CORE TOOLING DESIGN & FABRICATION	
		DECIMAL-INCH FRACTIONS	MCWF SUPPORT CART SUPPORT POST DETAILS	
		ANGULAR	DSN: J. RUSHINSKI 8-2-2007	DRAWING NO:
			CHK: M. COLE 8-2-2007	<b>SE186-328</b>
			ENGR: T. BROWN 8-2-2007	
			SUPV: J. SIEGEL 8-2-2007	SHEET 1 OF 1 REV 0

RELEASE LEVEL: Fabrication  
DWG VERSION NO: 5

WEIGHT  
MODEL NAME  
SE186-328-1  
WELDING ENGINEER