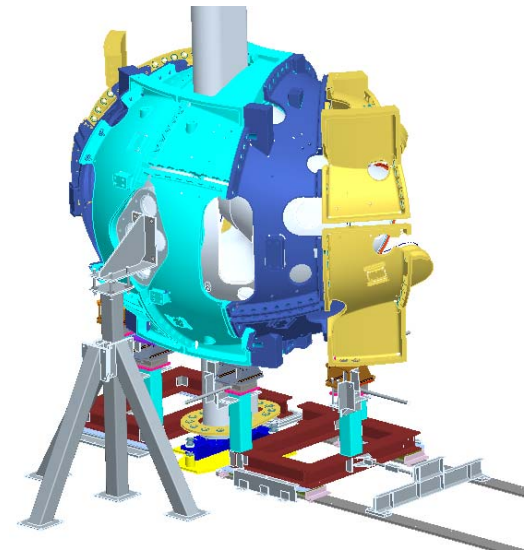
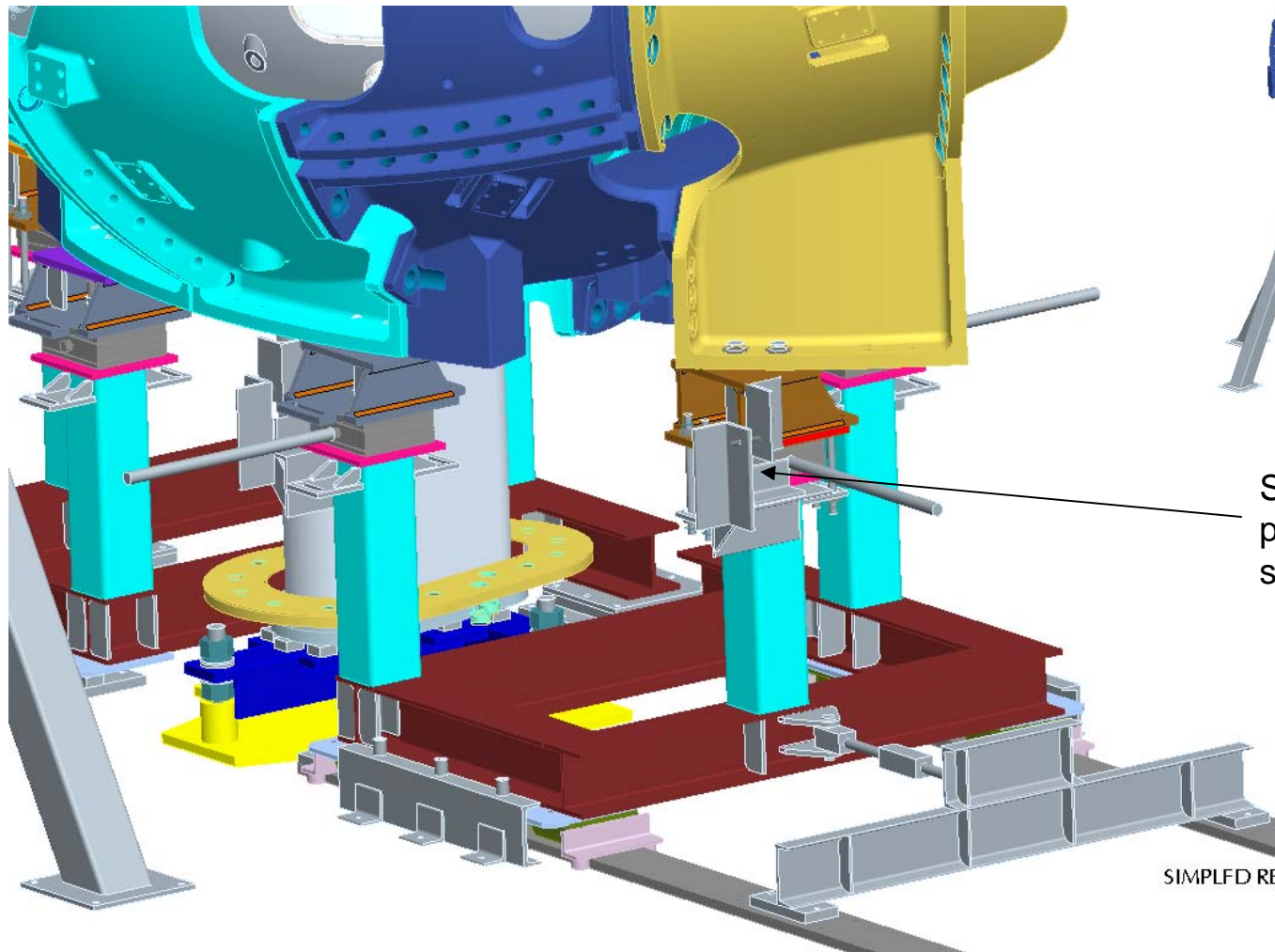


Peer Review of  
Station 3 Alignment System

March 11,2008

# Station 3 - local alignment system

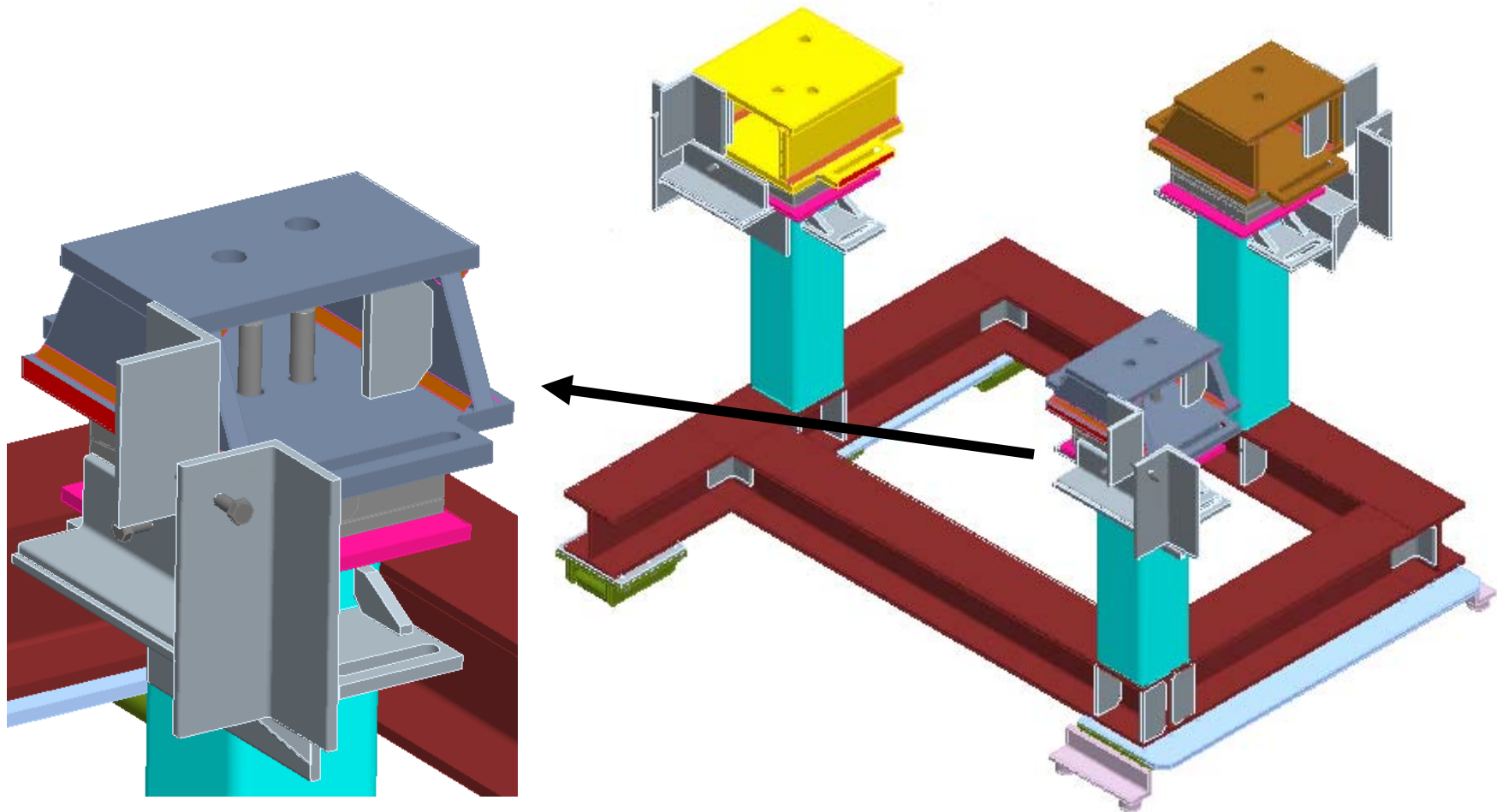


Station 2 style adjuster plates mounted to the support base

SIMPLFD REF

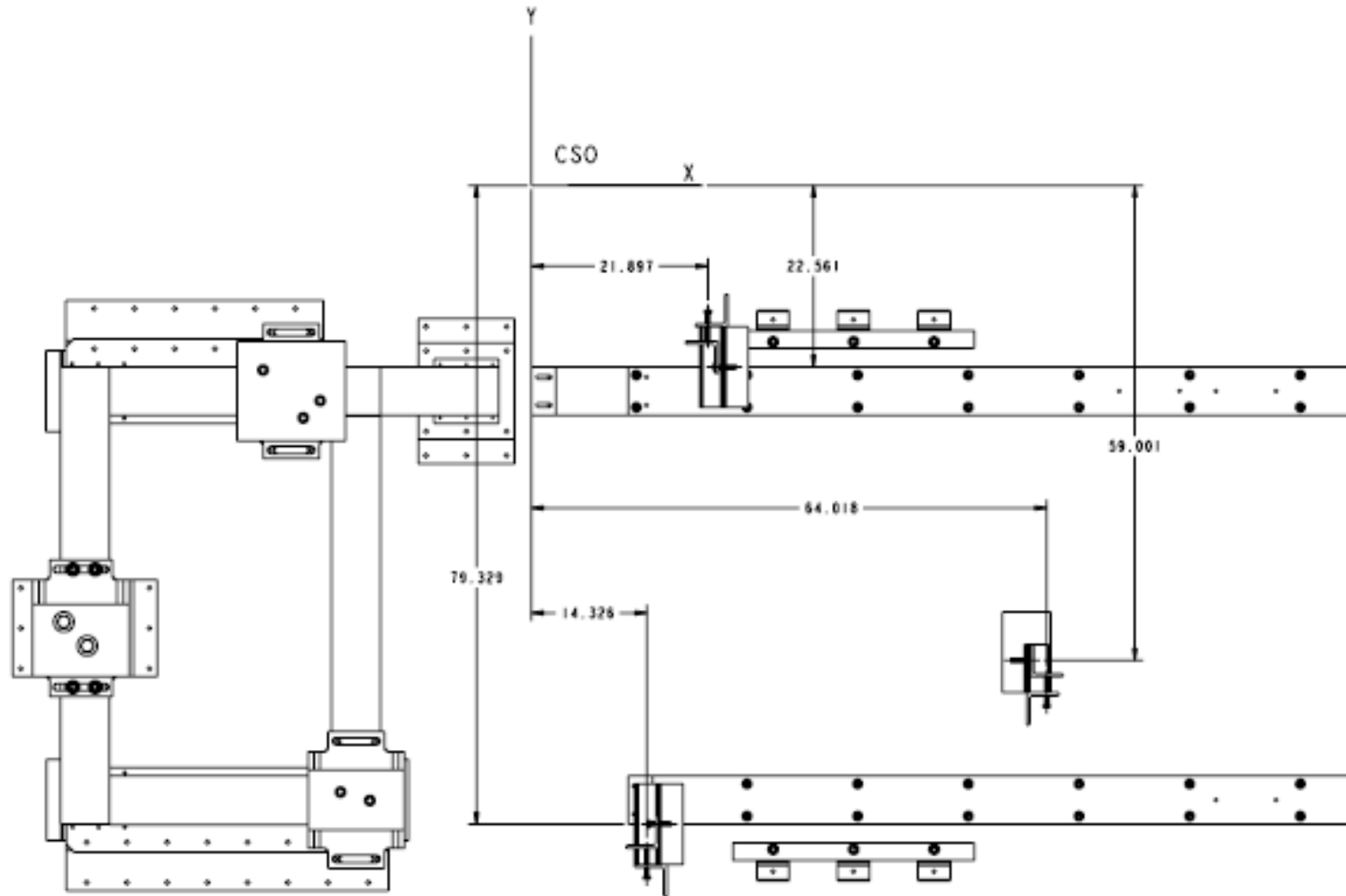
## Station 3 - local alignment system details

---

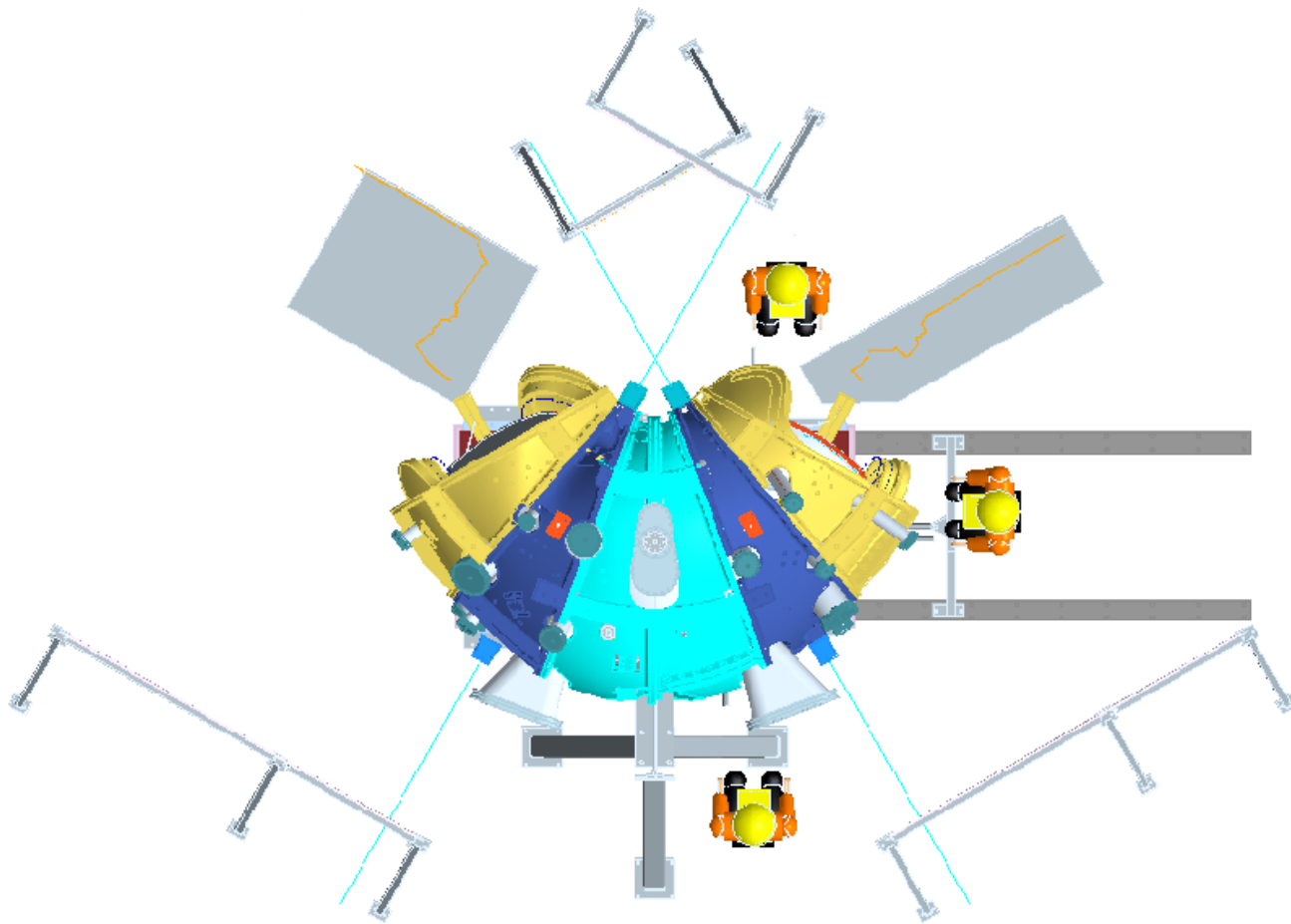


# Alignment system adjustment locations

---

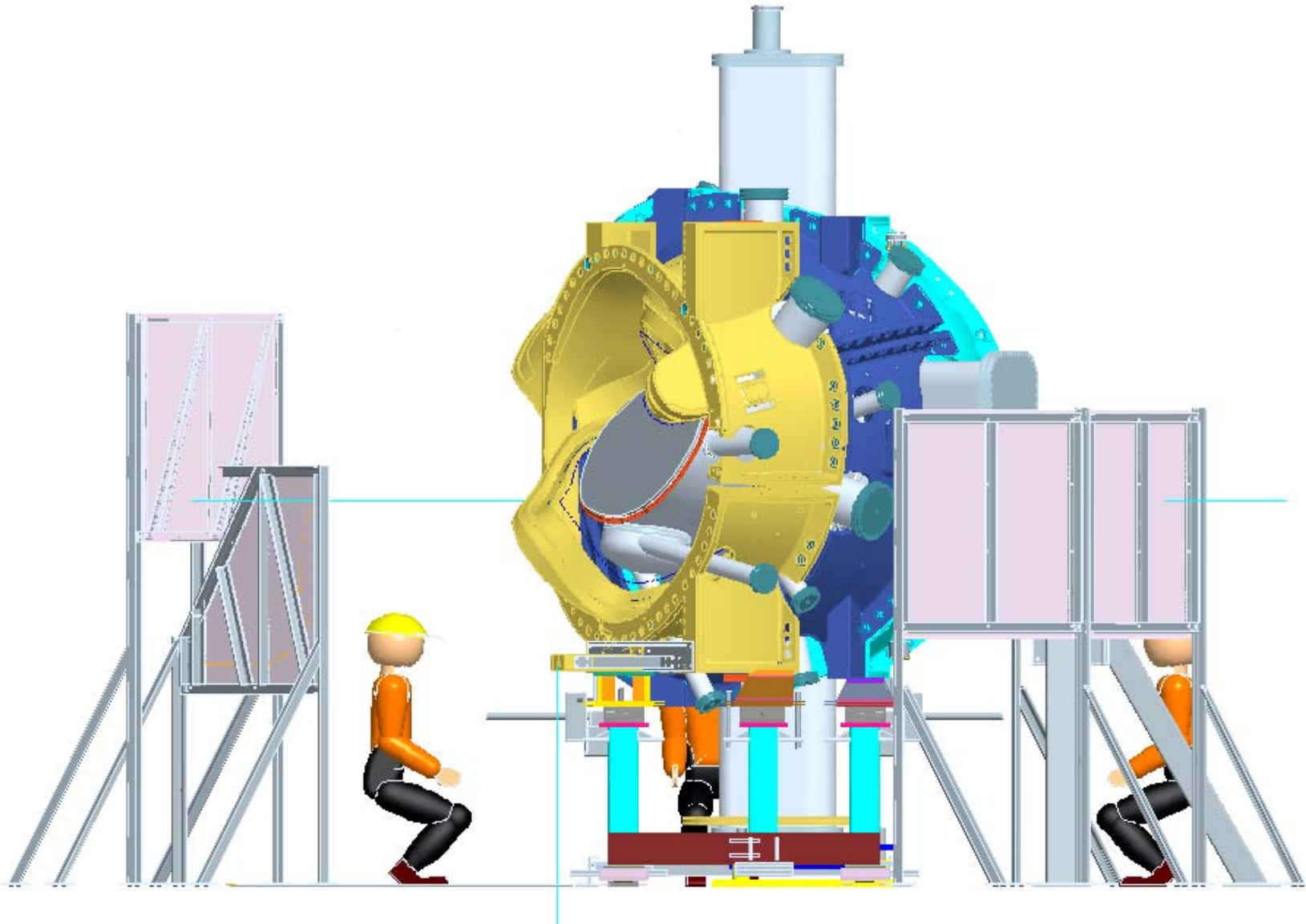


# Alignment system manned access (plan view)



# Alignment system manned access (ele view)

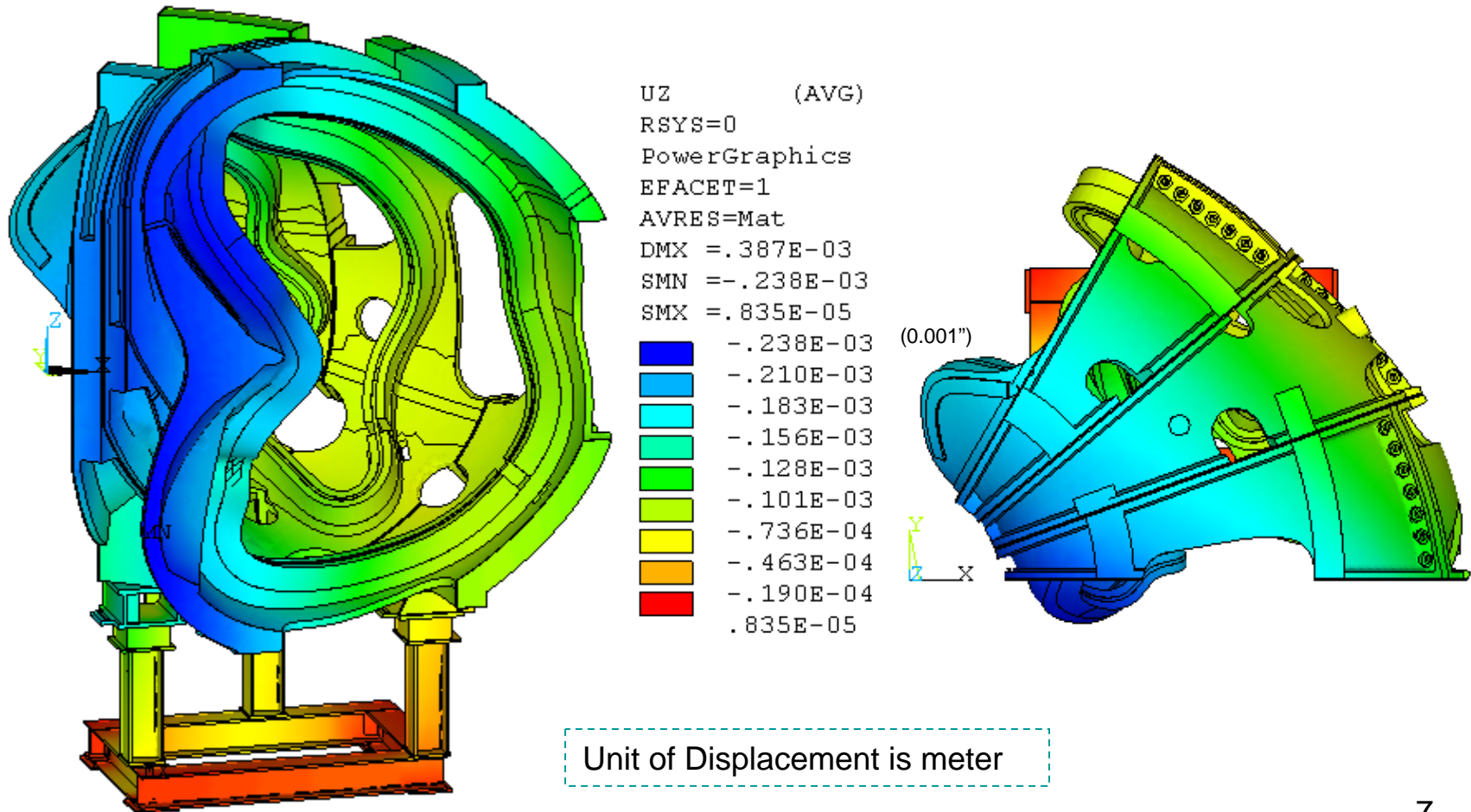
---





# Vertical Displacement

- The maximum downward displacement occurs at the inboard region of the shell type A.



# Total Displacement

- The inboard displacements are higher than the outboard displacements.

