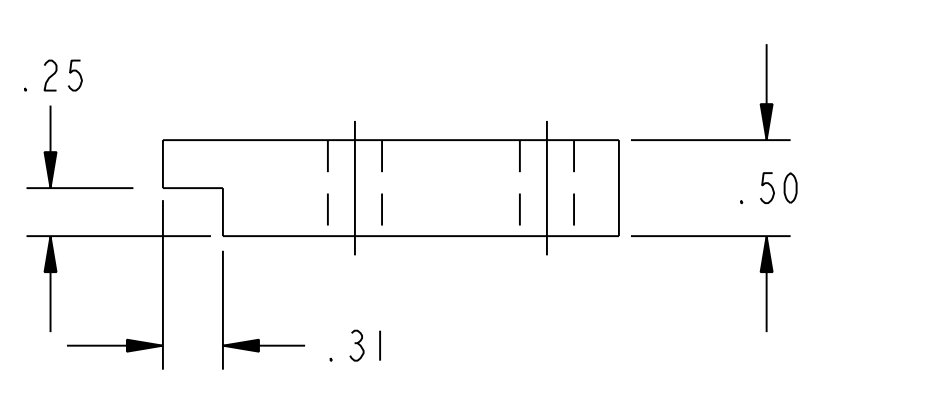
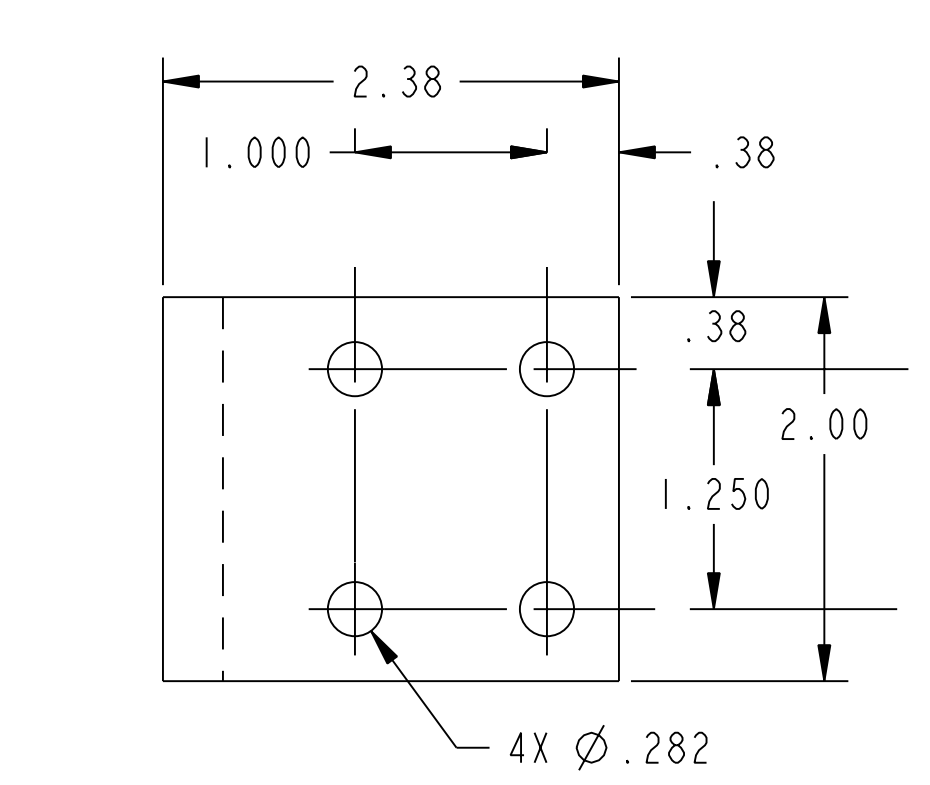
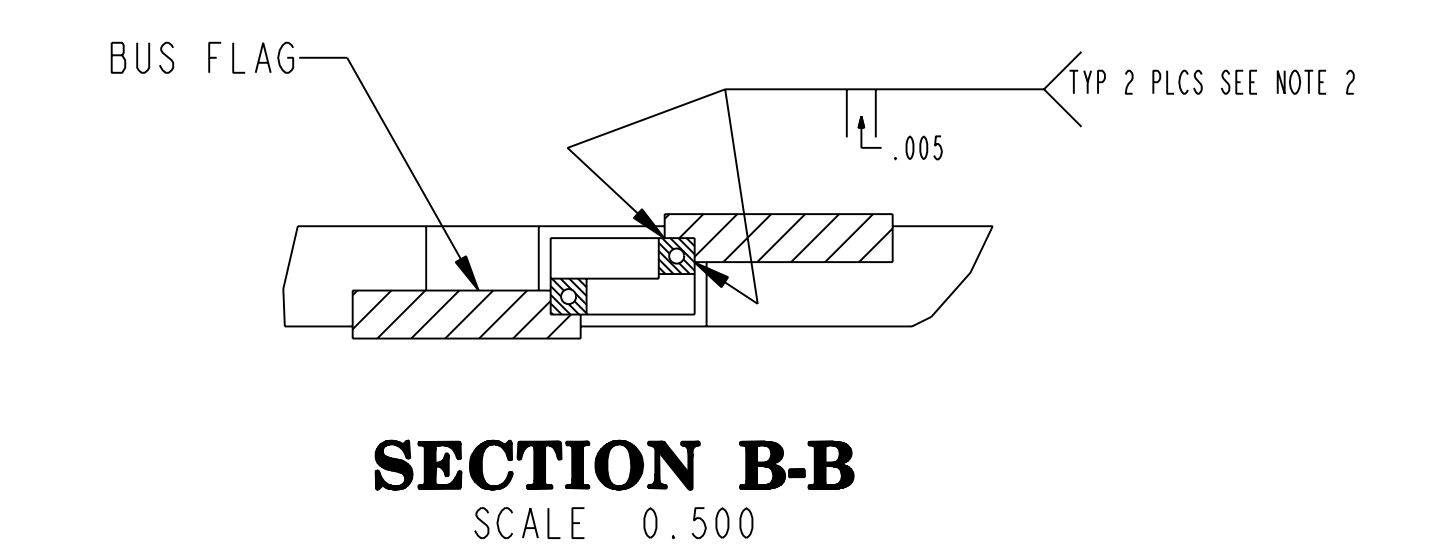
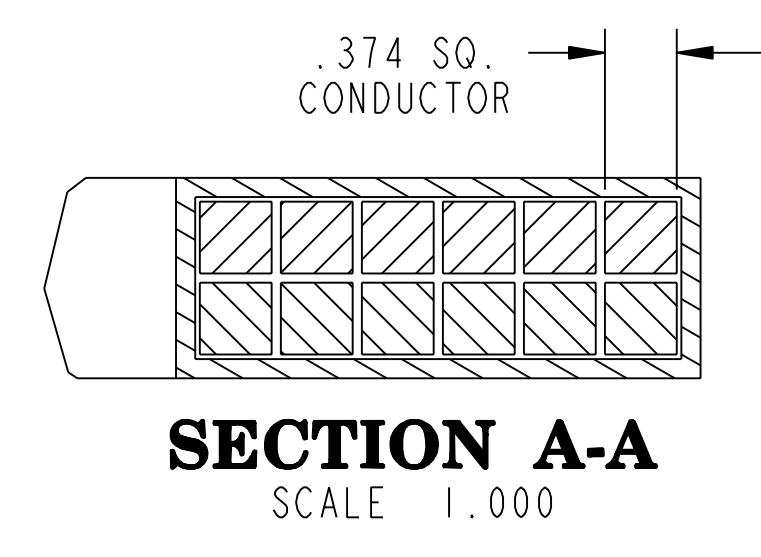
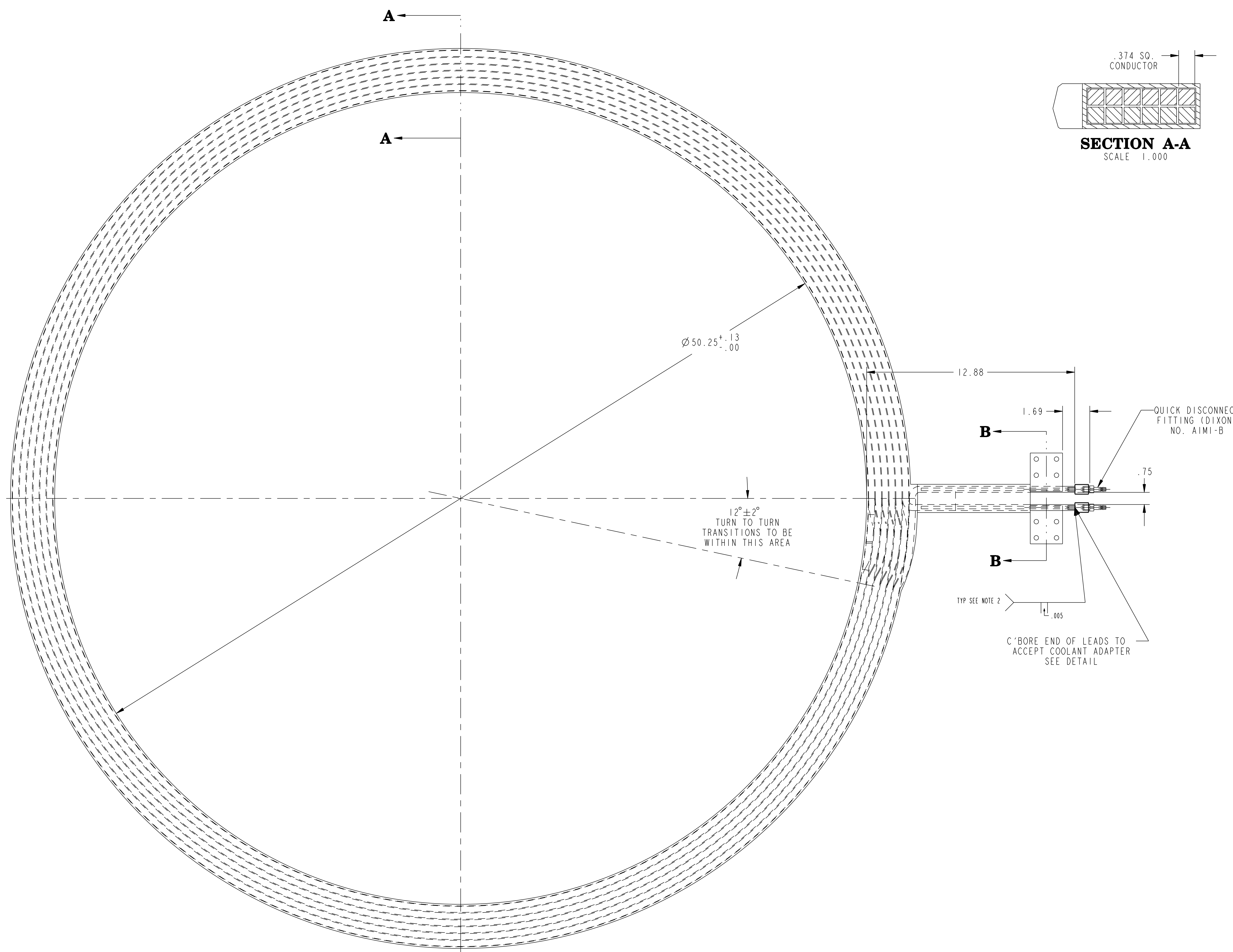
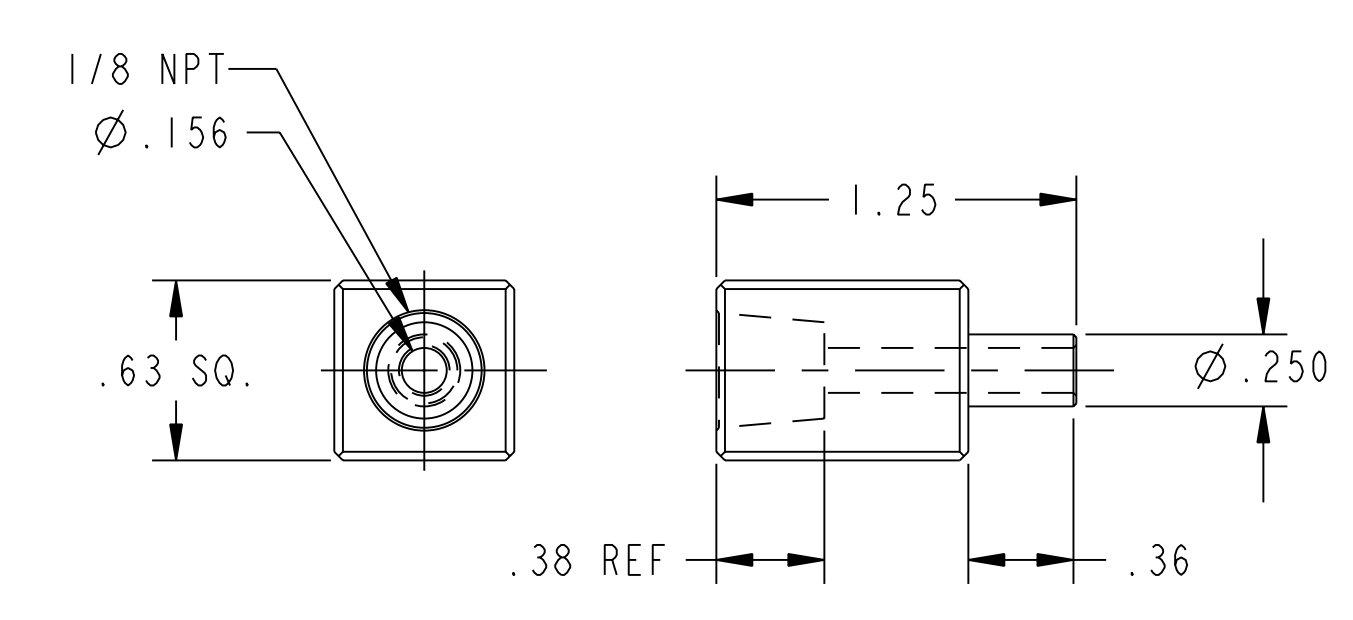


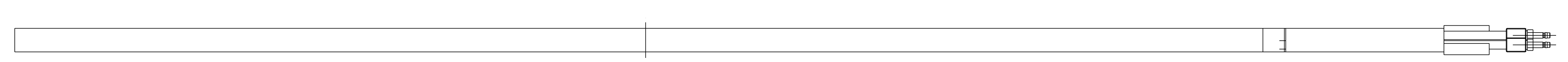
NO.	REVISION	BY	CH	SUP	APPROVED	DATE



BUS FLAG DETAIL
NO. REQ'D=4



COOLANT ADAPTER
SCALE = 1.5
NO. REQ'D = 4



RED COIL ASSEMBLY
NO. REQ'D=2

- NOTE:**
1. COIL TO BE MANUFACTURED PER THIS DRAWING AND PPPL SPECIFICATION NO. LTX-001-06
 2. BUS FLAG & COOLANT ADAPTER TO BE ATTACHED TO CONDUCTOR VIA TORCH BRAZING (SPEC LTX-001-06). TORCH BRAZING SHALL BE PERFORMED IN ACCORDANCE WITH THE REQUIREMENTS OF ASME B31.3. VISUAL INSPECTION SHALL BE PERFORMED IN ACCORDANCE WITH ACCEPTANCE CRITERIA OF ASME B31.E CATEGORY D.
 3. FOR BUS FLAG & COOLANT ADAPTER MATERIAL SEE PPPL SPECIFICATION NO. LTX-001-06.

COMPUTER GENERATED DRAWING MANUAL CHANGES NOT PERMITTED	CENTRAL FILES:	PRINCETON PLASMA PHYSICS LABORATORY PRINCETON UNIVERSITY			
	UNLESS OTHERWISE SPECIFIED	LITHIUM TOKAMAK EXPERIMENT			
Pro E	DIMENSIONS ARE IN INCHES MACHINE SURFACES	LTX RED COIL ASSEMBLY AND DETAILS			
DO NOT VERIFY INFORMATION BY SCALING DRAWING	BREAK SHARP EDGES .005/.020	TOLERANCES NON-CUMULATIVE	DIV: MECH. ENG.	DATE:	CADD FILE: ELTXS-109 DRW
NEXT ASSEMBLY	DECIMAL-INCH FRACTIONS	ENG: T. KOZUB	APPROVED	ELTXS-109	
	.XX ±.005 0°-120° ±.124	DSN: B. PAUL	CHK:	CHK SUPPLY	SHEET 1 OF 1 REV 0
	.XXX ±.005 120°-120° ±.124	ANGLAR ±.0°-15° OVER 120° ±.124	CHK:	CHK SUPPLY	

WELDING ENGINEER
APPVD: _____ DATE: _____

ELTXS-109