

Modular Coil Sys Requirements BSPEC-14-01-01

Mod Coil Design Description 2005 SDD-WBS14

Mod Coil Asm Specification CSPEC-142-05-01

Conductor Specification CSPEC-142-03-01

Coil Type-AB Winding Pack SE142A-019-R0

Coil Type-C Winding Pack SE142C-019-R1

Winding Form Specification CSPEC-141-03-13

Winding Form Asm Type-A SE141-101-R3C

Winding Form Asm Type-B SE141-102-R3C

Winding Form Asm Type-C SE141-103-R3C

Winding Form Type-A SE141-114-R9

Winding Form Type-B SE141-115-R10

Winding Form Type-C SE141-116-R9

Pol Break Shim Asm SE141-048-R3

Pol Break Shim Asm SE141-058-R3

Pol Break Shim Asm SE141-078-R2A

Type-A Short Bearing Plate SE141-141-R1

Type-B Short Bearing Plate SE141-139-R1

Type-C Short Bearing Plate SE141-137-R2A

Type-A Long Bearing Plate SE141-142-R1

Type-B Long Bearing Plate SE141-140-R1

Type-C Long Bearing Plate SE141-138-R2A

Stud, 1.38-Dia x 9.5 DS141-036-R2

Stud, 1.38-Dia x 9.5 DS141-036-R2

Stud, 1.38-Dia x 9.5 DS141-036-R2

Hex Nut, 1.38-Dia DS141-060-R1

Hex Nut, 1.38-Dia DS141-060-R1

Hex Nut, 1.38-Dia DS141-060-R1

Mod Coil Asm Type-A SE140-101-R0

Mod Coil Terminal Asm SE142C-050-R1

Jumpers Base Block SE142C-047-R1

Jumpers Ins Sheet SE142C-049-R0

Terminal Jumper #1 SE142C-051-R1

Type-A, Side-A Clad/Chill Pits SE142A-252-R1

Terminal Jumper #2 SE142C-052-R1

Terminal Jumper #3 SE142C-053-R1

Terminal Jumper #4 SE142C-054-R1

Type-A, Side-B Clad/Chill Pits SE142A-242-R1

Side-A Term Lug-Short SE142C-055-R1

Side-B Term Lug-Long SE142C-056-R1

Conductor Cable Connect SE142C-059-R2

Flux Loop Enclosure SE310-032-R0

Insul Sheet Detail SE142C-211-R1

Insulating Spacer SE142C-212-R1

Lead Block Thd Stud SE142C-220-R0

Type-A Leads Asm SE142A-080-R0

Terminal Ins Plate SE142C-254-R0

Leads Spacer Temporary SE142C-260-R0

Leads Connector SE142C-045-R0

Type-A Side-A Lower Block SE142A-134-R0

Type-A Side-A Upper Block SE142C-136-R0

Type-A Side-B Lower Block SE142C-135-R0

Poloidal Break Tube Insul Asm SE140-025-R0

Type-A Side-B Upper Block SE142A-137-R0

Lead Filler Strips SE142C-226-R0

Leads Area Chill Plate SE142A-183-R0

Clamp SE140-026-R0

Type-A Side-A Cover Plate SE142A-220-R0

Type-A Side-B Cover Plate SE142A-221-R0

Leads Enclosure Top Plate SE142A-184-R0

Tube Block Clamp Asm SE140-030-R0

Top Position Bushing SE142C-285-R0

Clamp Block SE140-027-R0

Mod Coil Asm Type-B SE140-102-R0

Mod Coil Terminal Asm SE142C-050-R1

Jumpers Base Block SE142C-047-R1

Jumpers Ins Sheet SE142C-049-R0

Terminal Jumper #1 SE142C-051-R1

Type-B, Side-A Clad/Chill Pits SE142B-252-R2

Terminal Jumper #2 SE142C-052-R1

Terminal Jumper #3 SE142C-053-R1

Terminal Jumper #4 SE142C-054-R1

Type-B, Side-B Clad/Chill Pits SE142B-242-R1A

Side-A Term Lug-Short SE142C-055-R1

Side-B Term Lug-Long SE142C-056-R1

Conductor Cable Connect SE142C-059-R2

Flux Loop Enclosure SE310-032-R0

Insul Sheet Detail SE142C-211-R1

Insulating Spacer SE142C-212-R1

Lead Block Thd Stud SE142C-220-R0

Type-B Leads Asm SE142B-080-R0

Terminal Ins Plate SE142C-254-R0

Leads Spacer Temporary SE142C-260-R0

Leads Connector SE142C-045-R0

Type-B Side-A Lower Block SE142B-134-R0

Type-B Side-A Upper Block SE142B-136-R0

Type-B Side-B Lower Block SE142B-135-R0

Poloidal Break Tube Insul Asm SE140-025-R0

Type-B Side-B Upper Block SE142B-137-R0

Lead Filler Strips SE142C-226-R0

Leads Area Chill Plate SE142B-183-R0

Clamp SE140-026-R0

Type-B Side-A Cover Plate SE142B-220-R0

Type-B Side-B Cover Plate SE142B-221-R0

Leads Enclosure Top Plate SE142B-184-R0

Tube Block Clamp Asm SE140-030-R0

Top Position Bushing SE142C-285-R0

Clamp Block SE140-027-R0

Mod Coil Asm Type-C SE140-103-R0

Mod Coil Terminal Asm SE142C-050-R1

Jumpers Base Block SE142C-047-R1

Jumpers Ins Sheet SE142C-049-R0

Terminal Jumper #1 SE142C-051-R1

Type-C, Side-A Sep Cladding SE142C-382-R1

Terminal Jumper #2 SE142C-052-R1

Terminal Jumper #3 SE142C-053-R1

Terminal Jumper #4 SE142C-054-R1

Type-C, Side-A Base Cladding SE142C-384-R1

Side-A Term Lug-Short SE142C-055-R1

Side-B Term Lug-Long SE142C-056-R1

Conductor Cable Connect SE142C-059-R2

Type-C, Side-A Top Chill Pits SE142C-386-R1

Insul Sheet Detail SE142C-211-R1

Insulating Spacer SE142C-212-R1

Lead Block Thd Stud SE142C-220-R0

Type-C, Side-A Side Chill Pits SE142C-388-R2A

Terminal Ins Plate SE142C-254-R0

Leads Spacer Temporary SE142C-260-R0

Leads Connector SE142C-045-R0

Type-C, Side-B Sep Cladding SE142C-482-R1

Type-C, Side-B Base Cladding SE142C-484-R1

Type-C, Side-B Top Chill Pits SE142C-486-R1

Type-C, Side-B Side Chill Pits SE142C-488-R2

Type-C Side-A Lower Block SE142C-134-R0

Type-C Side-A Upper Block SE142C-136-R0

Type-C Side-B Lower Block SE142C-135-R0

Flux Loop Enclosure SE310-032-R0

Type-C Side-B Upper Block SE142C-137-R0

Lead Filler Strips SE142C-226-R0

Leads Area Chill Plate SE142C-183-R0

Poloidal Break Tube Insul Asm SE140-025-R0

Type-C Side-A Cover Plate SE142C-220-R0

Type-C Side-B Cover Plate SE142C-221-R0

Leads Enclosure Top Plate SE142A-184-R0

Clamp SE140-026-R0

Top Position Bushing SE142C-285-R0

Tube Block Clamp Asm SE140-030-R0

Clamp Block SE140-027-R0

Type-C Side-A Lower Block SE142C-134-R0

Type-C Side-A Upper Block SE142C-136-R0

Type-C Side-B Lower Block SE142C-135-R0

Flux Loop Enclosure SE310-032-R0

Type-C Side-B Upper Block SE142C-137-R0

Lead Filler Strips SE142C-226-R0

Leads Area Chill Plate SE142C-183-R0

Poloidal Break Tube Insul Asm SE140-025-R0

Type-C Side-A Cover Plate SE142C-220-R0

Type-C Side-B Cover Plate SE142C-221-R0

Leads Enclosure Top Plate SE142A-184-R0

Clamp SE140-026-R0

Top Position Bushing SE142C-285-R0

Tube Block Clamp Asm SE140-030-R0

Clamp Block SE140-027-R0

Type-C Side-A Lower Block SE142C-134-R0

Type-C Side-A Upper Block SE142C-136-R0

Type-C Side-B Lower Block SE142C-135-R0

Flux Loop Enclosure SE310-032-R0

Type-C Side-B Upper Block SE142C-137-R0

Lead Filler Strips SE142C-226-R0

Leads Area Chill Plate SE142C-183-R0

NCSX Magnets Technical Data

Mod Coil Shell Eddy Currents CALC-14-006-00

Mod Coil Failure Modes FMEA-14-002-00

NCSX Magnet Fault Loads CALC-TBD

EM/Struct Analysis of Coil and Shell CALC-14-001-00

Leads EM/Struct Analysis CALC-TBD

Nonlinear Analysis Integrated Struct CALC-14-003-00

Mod Coil Interface Welded Joint CALC-14-005-00

Mod Coil Cooling Thermal Analysis CALC-14-002-00

Mod Coil Cooling Thermal Network CALC-TBD

Mod Coil Sys Cooledown Issues CALC-TBD

Global Analysis

EM/Structural Analysis

Thermal Analysis

Properties Testing

Mod Coil Interim Prop 031212-140-IJZ

Stellalloy Properties N/A

Casting Alloy CTE

Winding Pack Beam Tests 041114-BEN

Mod Coil Friction Shim Tests CALC-14-004-00

Coil Testing

Test Report for UT Racetrack Coil N/A

Test Report for Twisted Racetrack N/A

Test Report for Mod Coil C1 TEST-14-001-00

Design Reviews

Modular Coil PDR (2003) N/A

Winding Forms FDR (2004)

Mod Coil Cladding FDR (2005)

Mod Coil Lead Blocks FDR (2005)

Mod Coil Winding/Clamps FDR (2005)

Mod Coil Asm FDR (2007)

Mod Coil Outboard Shims FDR (2007)

Mod Coil Bolted Joint FDR (2007)

Mod Coil AA/AB/BC Intf FDR (2007)

Mod Coil CC Interface FDR (2008)

SCALE NOTED

DESIGNER: D WILLIAMSON 4/08  
TOLERANCES UNLESS OTHERWISE SPECIFIED  
FRACTIONS: XX DECIMALS ±.01  
XXX DECIMALS ±.005  
ANGLES: ±0°15'  
BREAK SHARP EDGES 00 MAX  
FINISH: UNLESS OTHERWISE SPECIFIED

UT-BATTELLE  
NATIONAL COMPACT STELLARATOR EXPERIMENT

MODULAR COIL TYPE-ABC DESIGN DOCUMENTATION

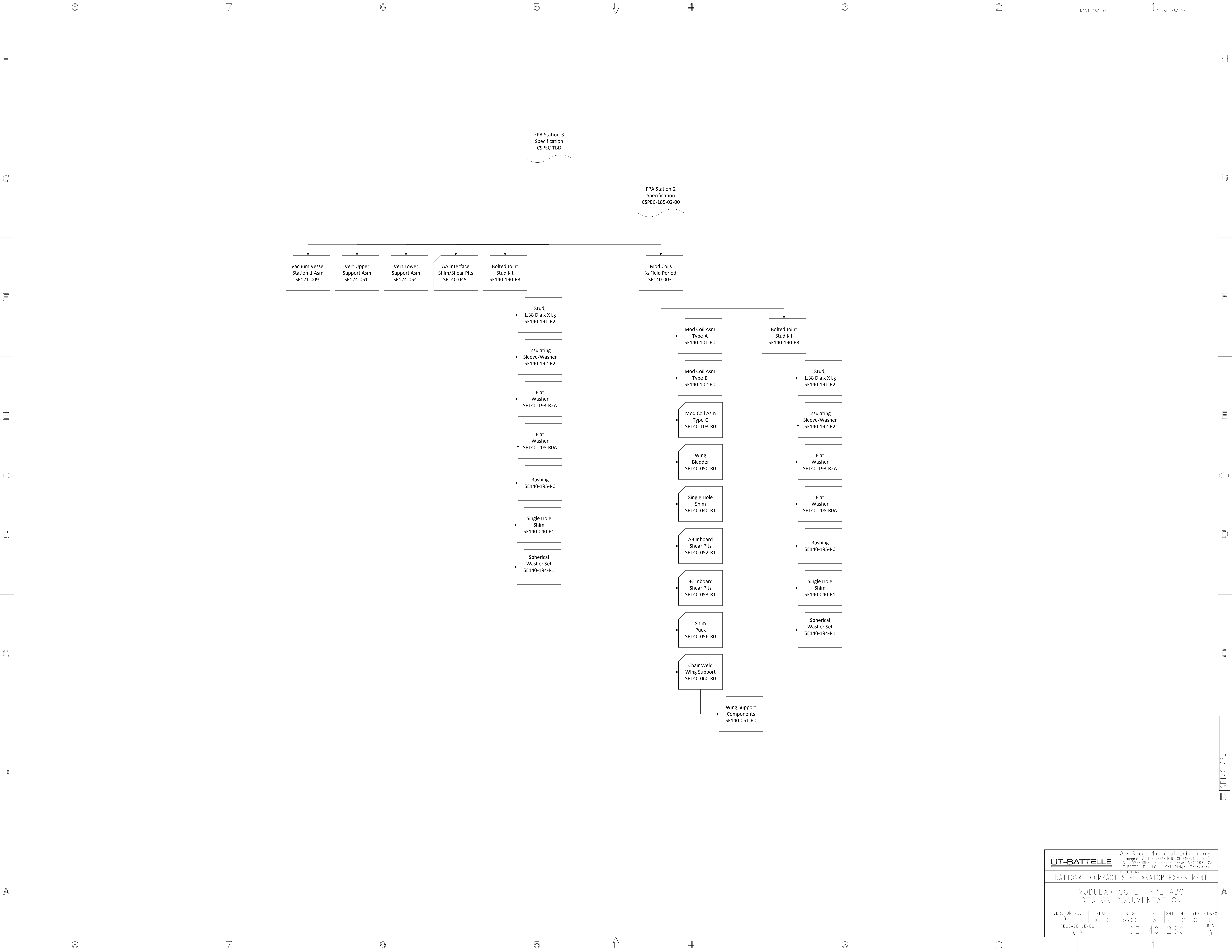
VERSION NO. 0+ PLANT X-10 BLDG 5700 FL SHT OF TYPE CLASS  
RELEASE LEVEL WIP SE140-230 REV 0

Table with columns: REV, DESCRIPTION, BY, DATE, CHK, DEPT, DATE, PE, REQ, DATE, ORNL, DOE, DATE. Includes revision history for various components.

NO REPRESENTATION OR WARRANTY EXPRESSED OR IMPLIED IS MADE AS TO THE ACCURACY, COMPLETENESS OR USEFULNESS OF THE INFORMATION OR STATEMENTS CONTAINED IN THESE DRAWINGS...

THIS DRAWING PRODUCED ON PRO-ENGINEER

SE140-230



UT-BATTELLE		Oak Ridge National Laboratory managed for the DEPARTMENT OF ENERGY under U.S. GOVERNMENT contract DE-AC05-00OR22725 UT-BATTELLE, LLC, Oak Ridge, Tennessee					
PROJECT NAME		NATIONAL COMPACT STELLARATOR EXPERIMENT					
DESIGN DOCUMENTATION		MODULAR COIL TYPE-ABC					
VERSION NO.	PLANT	BLDG	FL	SHT	OF	TYPE	CLASS
0+	X-10	5700	3	2	2	S	U
RELEASE LEVEL		SE140-230				REV	
WIP						0	

SE140-230