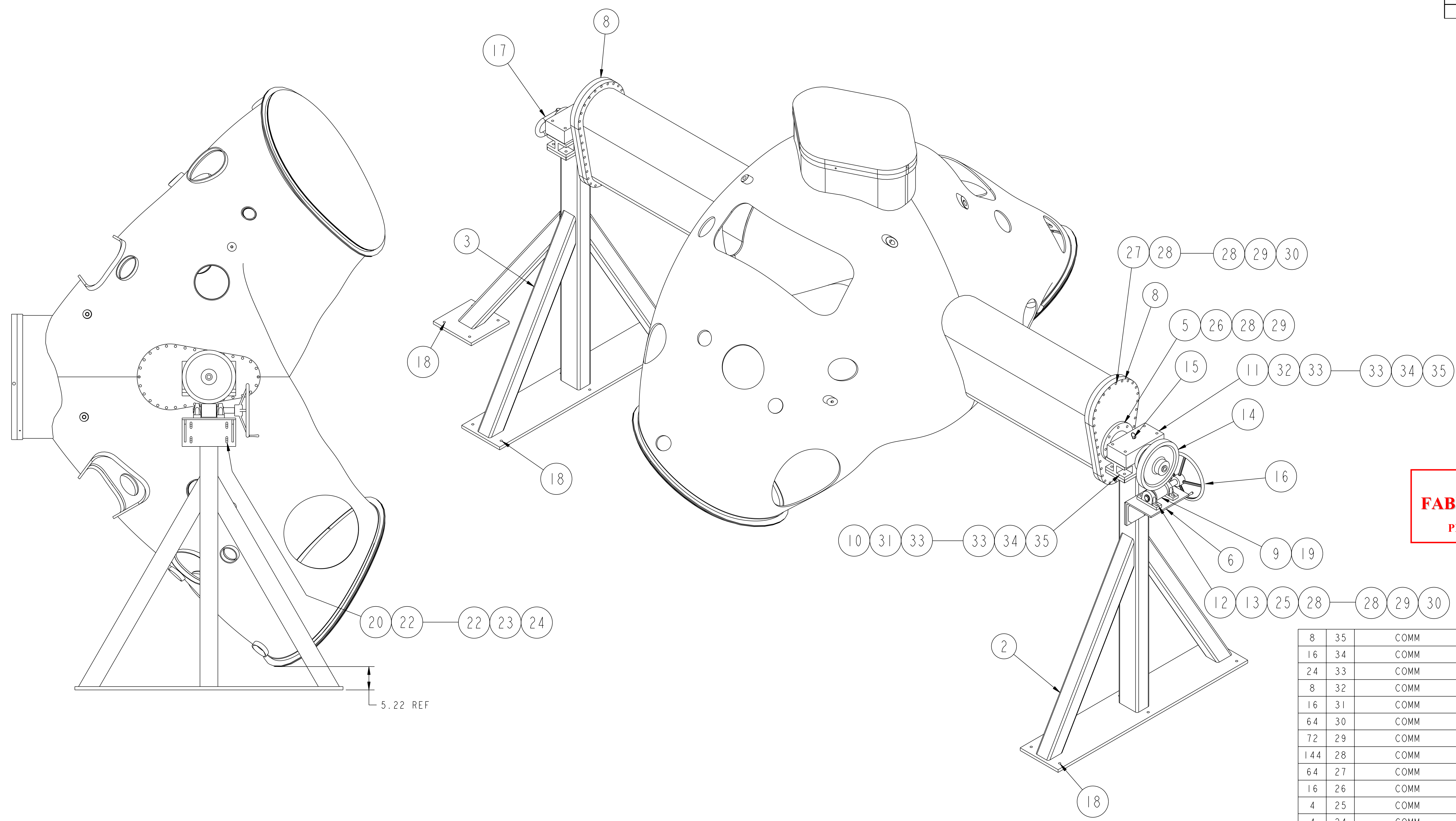
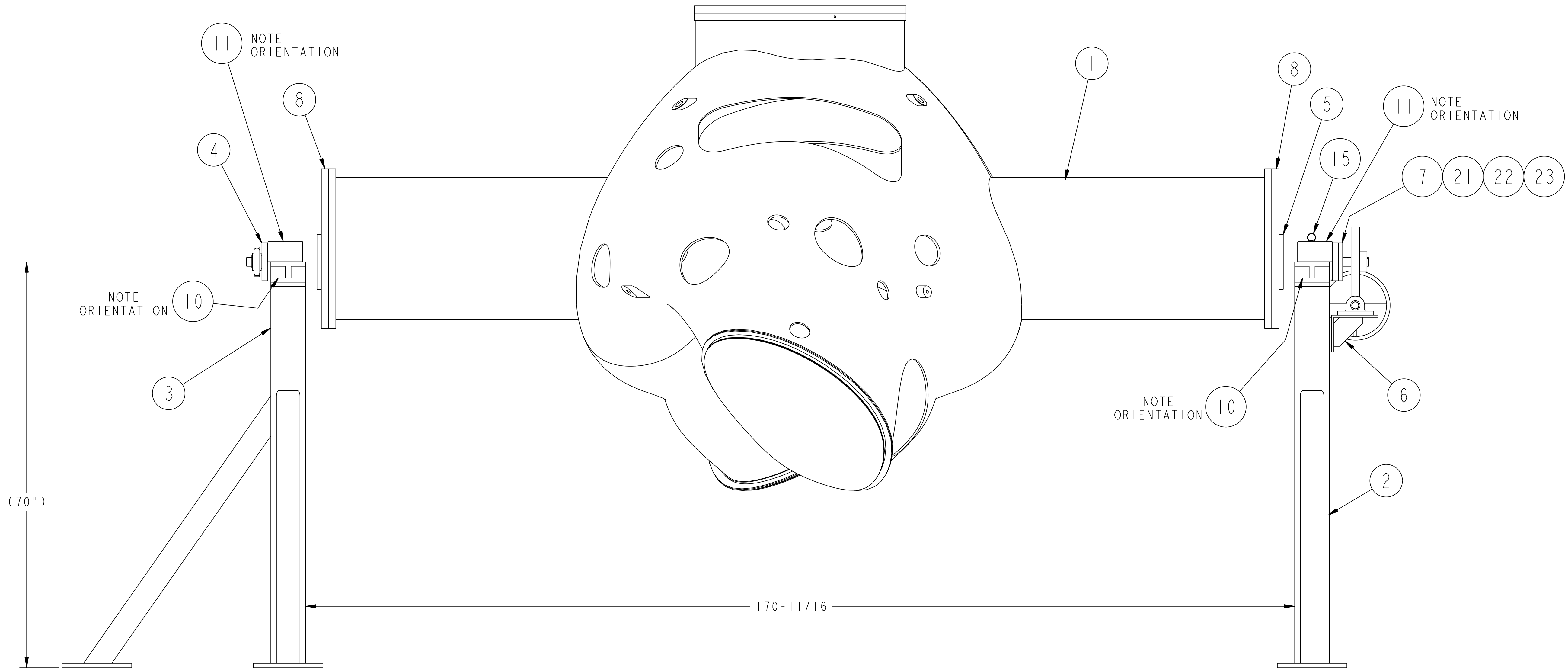


NO.	REVISION	BY	CH	SUP	APPROVED	DATE



**RELEASED FOR
FABRICATION / INSTALLATION**
PPPL Drafting:

8	35	COMM	3/4-10UNC-2B HEX NUT	C' STL - ZN PLT
16	34	COMM	3/4" SPLIT LOCK WASHER	C' STL - ZN PLT
24	33	COMM	3/4" (NOM) FLAT WASHER	C' STL - ZN PLT
8	32	COMM	3/4-10UNC-2A x 5" LG HEX HD CAP SCR	C' STL - ZN PLT
16	31	COMM	3/4-10UNC-2A x 2 1/2" LG HEX HD CAP SCR	C' STL - ZN PLT
64	30	COMM	1/2-13UNC-2B HEX NUT	C' STL - ZN PLT
72	29	COMM	1/2" SPLIT LOCK WASHER	C' STL - ZN PLT
144	28	COMM	1/2" (NOM) FLAT WASHER	C' STL - ZN PLT
64	27	COMM	1/2-13UNC-2A x 3 1/4" LG HEX HD CAP SCR	C' STL - ZN PLT
16	26	COMM	1/2-13UNC-2A x 2" LG HEX HD CAP SCR	C' STL - ZN PLT
4	25	COMM	1/2-13UNC-2A x 1 3/4" LG HEX HD CAP SCR	C' STL - ZN PLT
4	24	COMM	3/8-16UNC-2B HEX NUT	C' STL - ZN PLT
10	23	COMM	3/8" SPLIT LOCK WASHER	C' STL - ZN PLT
14	22	COMM	3/8" (NOM) FLAT WASHER	C' STL - ZN PLT
6	21	COMM	3/8-16UNC-2A x 1 3/4" LG HEX HD CAP SCR	C' STL - ZN PLT
4	20	COMM	3/8-16UNC-2A x 1 1/2" LG HEX HD CAP SCR	C' STL - ZN PLT
1	19	COMM	5/16" NOM SQ. KEY x 4" LG	C' STL
16	18	COMM	1/2" CONCRETE ANCHOR BOLT/NUT 5 1/2" LG	STEEL
2	17	COMM	HOIST RING - 10,000# CAP. McMASTER-CARR #3145T34 OR EQUIV.	STEEL
1	16	COMM	HANDWHEEL WITH HANDLE - 5/8" BORE x 12" O.D. McMASTER-CARR #6026K159 OR EQUIV.	CAST IRON
1	15	COMM	QUICK RELEASE PIN - Ø1/2" x 1.5" LG GRIP McMASTER-CARR #98320A495 OR EQUIV.	ZN PLT ST'L
1	14	COMM	WORM GEAR - 4 PITCH 48 TEETH 12,000 P.D BOSTON GEAR CAT. #G1104 ITEM #13244	CAST IRON
1	13	COMM	WORM - 3" P.D. RIGHT HAND BOSTON GEAR CAT. #H1106 ITEM #12976	STEEL
2	12	COMM	Ø1.250 PILLOW BLOCK WITH BEARING McMASTER-CARR #6244K73 OR EQUIV.	CAST IRON
2	11	SE184-004-2	SUPPORT AXLE CRADLE TOP	SEE DWG
2	10	SE184-004-1	SUPPORT AXLE CRADLE BASE	SEE DWG
1	9	SE184-003-2	WORM AXLE	SEE DWG
2	8	SE184-003-1	PORT 12 BLANK-OFF COVER	SEE DWG
1	7	SE184-002-06	WORM GEAR AXLE WELDMENT	SEE DWG
1	6	SE184-002-05	WORM SUPPORT BRACKET WELDMENT	SEE DWG
1	5	SE184-002-04	SUPPORT AXLE WELDMENT - TYPE "B"	SEE DWG
1	4	SE184-002-03	SUPPORT AXLE WELDMENT - TYPE "A"	SEE DWG
1	3	SE184-002-02	SUPPORT STAND WELDMENT - WITH OUTRIGGER	SEE DWG
1	2	SE184-002-01	SUPPORT STAND WELDMENT - WITH BRACKET	SEE DWG
1	1	SE120-002	120" VACUUM VESSEL SEGMENT	SEE DWG
1	—	—	THIS DWG	FIXTURE ASSEMBLY



**RELEASE LEVEL: Fabrication
DWG VERSION NO: 5**

COMPUTER GENERATED DRAWING MANUAL CHANGES NOT PERMITTED Pro E	CENTRAL FILES: UNLESS OTHERWISE SPECIFIED DIMENSIONS ARE IN INCHES MACHINE SURFACES UNLESS NOTED BREAK SHARP EDGES .005/.020	PRINCETON PLASMA PHYSICS LABORATORY PRINCETON UNIVERSITY NATIONAL COMPACT STELLARATOR EXPERIMENT EXTERNAL FLUX LOOPS VACUUM VESSEL SUPPORT STAND FIXTURE ASSEMBLY	
DO NOT VERIFY INFORMATION BY SCALING DRAWING	TOLERANCES NON-CUMULATIVE DECIMAL-INCH FRACTIONS .XX ±.010 .XXX ±.005 ANGULAR ±.0°-15'	DSN: L. MORRIS CHK: T. BROWN ENGR: T. BROWN SUPV: J. SIEGEL	9-28-05 9-28-05 9-28-05 9-28-05
WEIGHT 16398.6 lbs	MODEL NAME SE184-001-01	DRAWING NO: SE184-001	SHEET 1 OF 1
NEXT ASSEMBLY		REV 0	DATE

NCSX-SE184-001