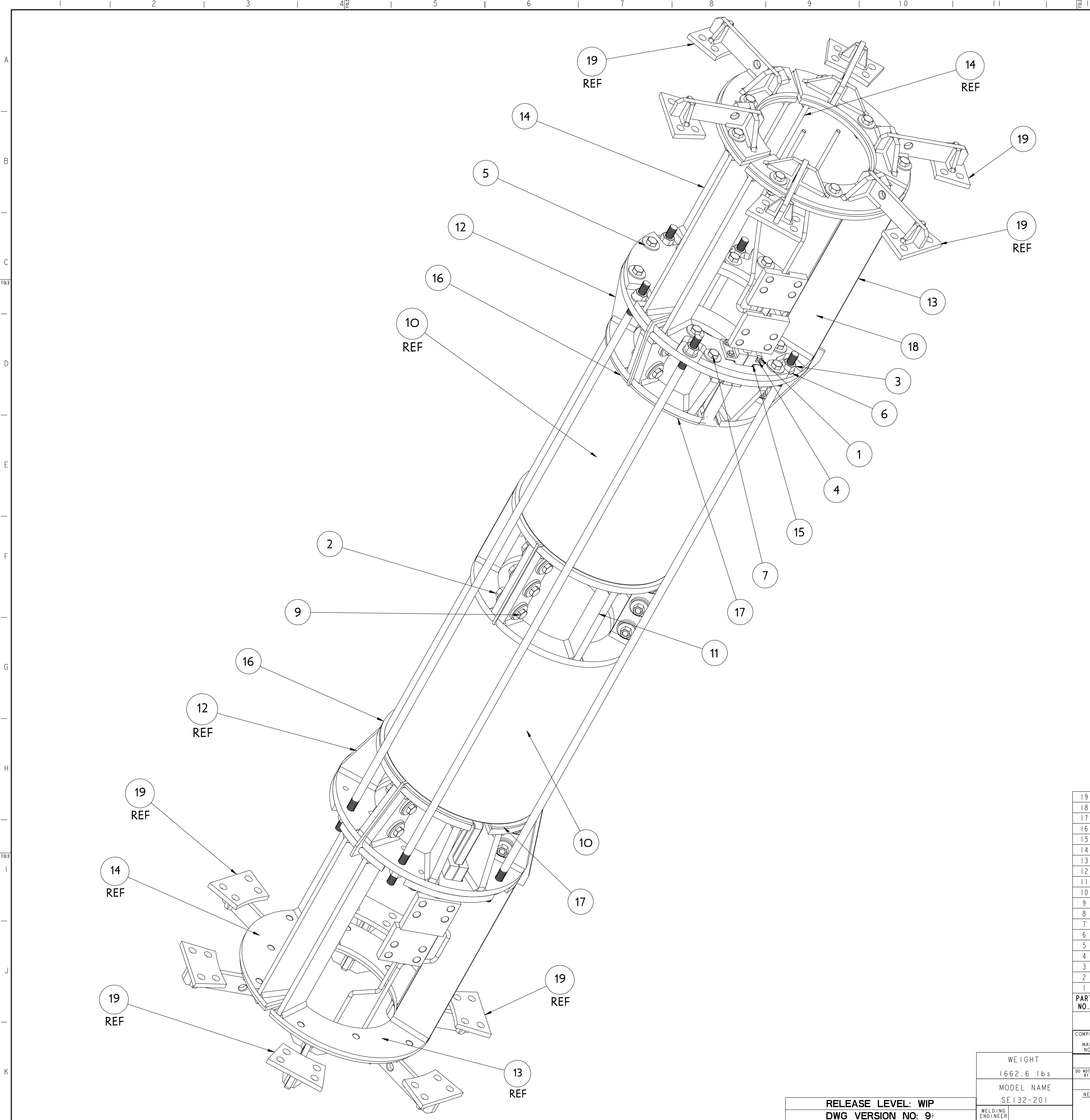


NO.	REVISION	BY	CH	SUP	APPROVED	DATE
-----	----------	----	----	-----	----------	------



NOTE  
SEE SPECIFICATION NCSX-CSPEC-132-XX-XX  
FOR ADDITIONAL INFORMATION AND/OR  
MATERIAL REQUIREMENTS.

TORQUE BOLTS TO VALUES INDICATED +/- 5%			
BOLT SIZE	THDS PER INCH	MATERIAL	VALUE INCH LBS
1/4	20 UNC	STN STL	70
5/8	11 UNC	STN STL	1075
3/4	10 UNC	STN STL	1475

PART NO.	DRAWING NO	NOMENCLATURE OR DESCRIPTION	MATERIAL	QTY REOD
19	SE132-250	CENTER SOLENOID TO UPPER/LOWER HUB SUPPORT BRACKET	SEE DETAILS	6
18	SE132-247	CLAMPING TIE ROD 3/4-10 X 72" LG	304 STN STL	6
17	SE132-235-6	CENTER SOLENOID END SUPPORT LEAD AREA INSULATION SHIM	G11-CR	4
16	SE132-235-5	CENTER SOLENOID END SUPPORT INSULATING SHIM	G11-CR	4
15	SE132-229	CENTER SOLENOID PFIA COIL LEAD LOCKING CLAMP	G11-CR	4
14	SE132-215	CENTER SOLENOID UPPER SUPPORT BRACKET WELDMENT	SEE DETAILS	4
13	SE132-214	CENTER SOLENOID UPPER SUPPORT ASSEMBLY WITH CUTS	SEE DETAILS	2
12	SE132-205	CENTER SOLENOID END SUPPORT ASSEMBLY	SEE DETAILS	2
11	SE132-204	CENTER SOLENOID CENTER SUPPORT ASSEMBLY	SEE DETAILS	1
10	SE132-203	PFIA COIL ASSEMBLY	SEE DETAILS	2
9	92245A815	HEX HEAD CAP SCREW 5/8-11 UNC X 3 LG McMASTER CARR #92245A815	300 STN STL	21
8	92245A809	HEX HEAD CAP SCREW 5/8-11 UNC X 2 LG McMASTER CARR #92245A809	300 STN STL	9
7	92245A805	HEX HEAD CAP SCREW 5/8-11 UNC X 1 1/2 LG McMASTER CARR #92245A805	300 STN STL	24
6	12L112177	SOLOID 3/4" BELLEVILLE SPRING WASHER #12L112177	17-7 PH STN STL	12
5	151322	5/8 FLAT WASHER	STN STL	84
4	151317	1/4 FLAT WASHER	STN STL	8
3	150264	3/4-10 UNC STANDARD HEX NUT	STN STL	12
2	150263	5/8-11 UNC STANDARD HEX NUT	STN STL	30
1	150029	1/4-20 UNC X 3/4 HEX HEAD BOLT	STN STL	8

WEIGHT  
1662.6 lbs

MODEL NAME  
SE132-201

RELEASE LEVEL: WIP  
DWG VERSION NO: 9

COMPUTER GENERATED DRAWING  
MANUAL CHANGES NOT PERMITTED

Pr o E

DO NOT VERIFY INFORMATION BY SCALING DRAWING

NEXT ASSEMBLY

WELDING ENGINEER

CENTRAL FILES:  
UNLESS OTHERWISE SPECIFIED  
DIMENSIONS ARE IN INCHES  
MACHINE SURFACES  
BREAK SHARP EDGES .005/.020

TOLERANCES NON-CUMULATIVE  
DECIMAL-INCH FRACTIONS  
.XX +/- .000  
.XXX +/- .005  
ANGULAR +/- .05

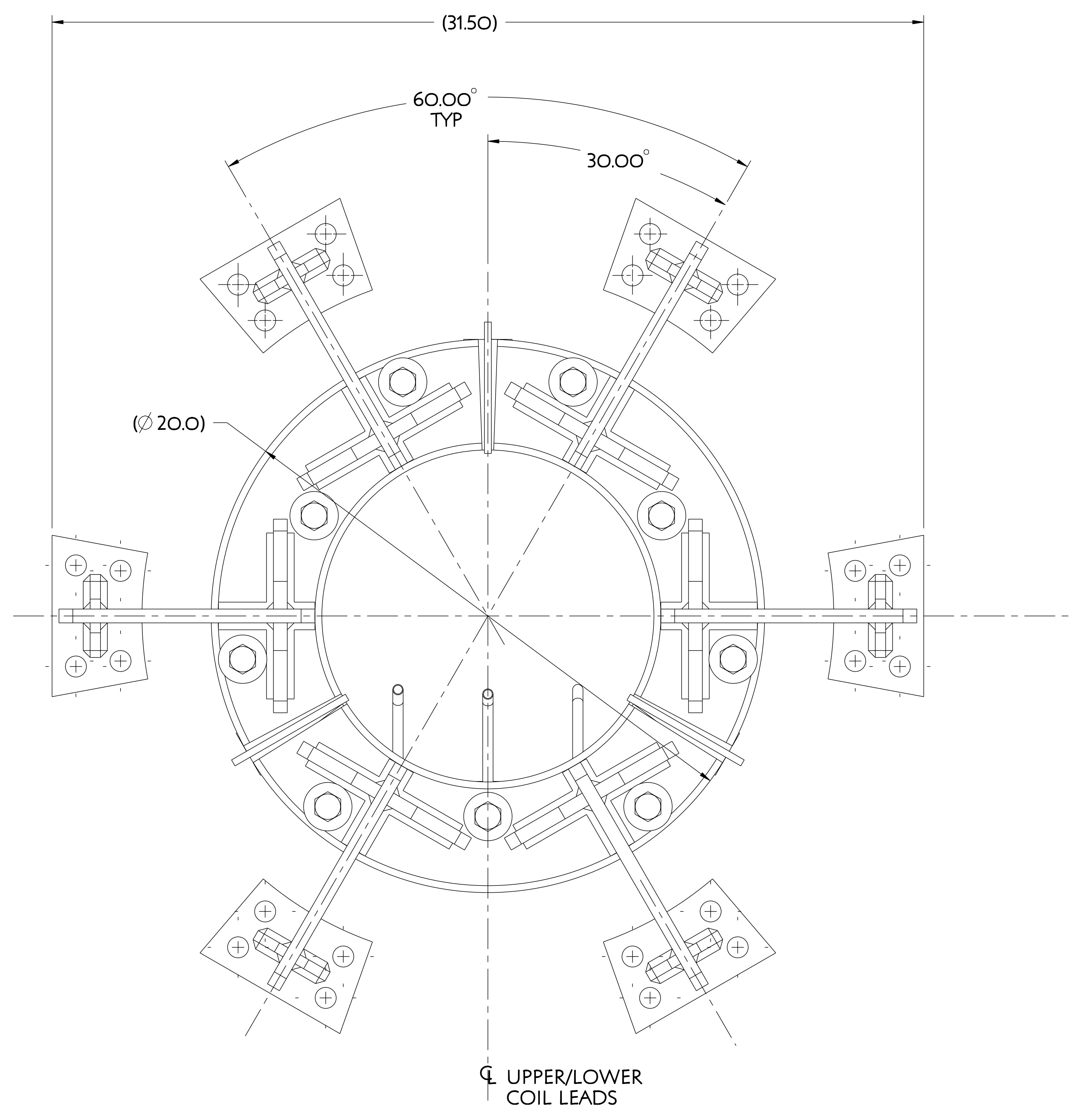
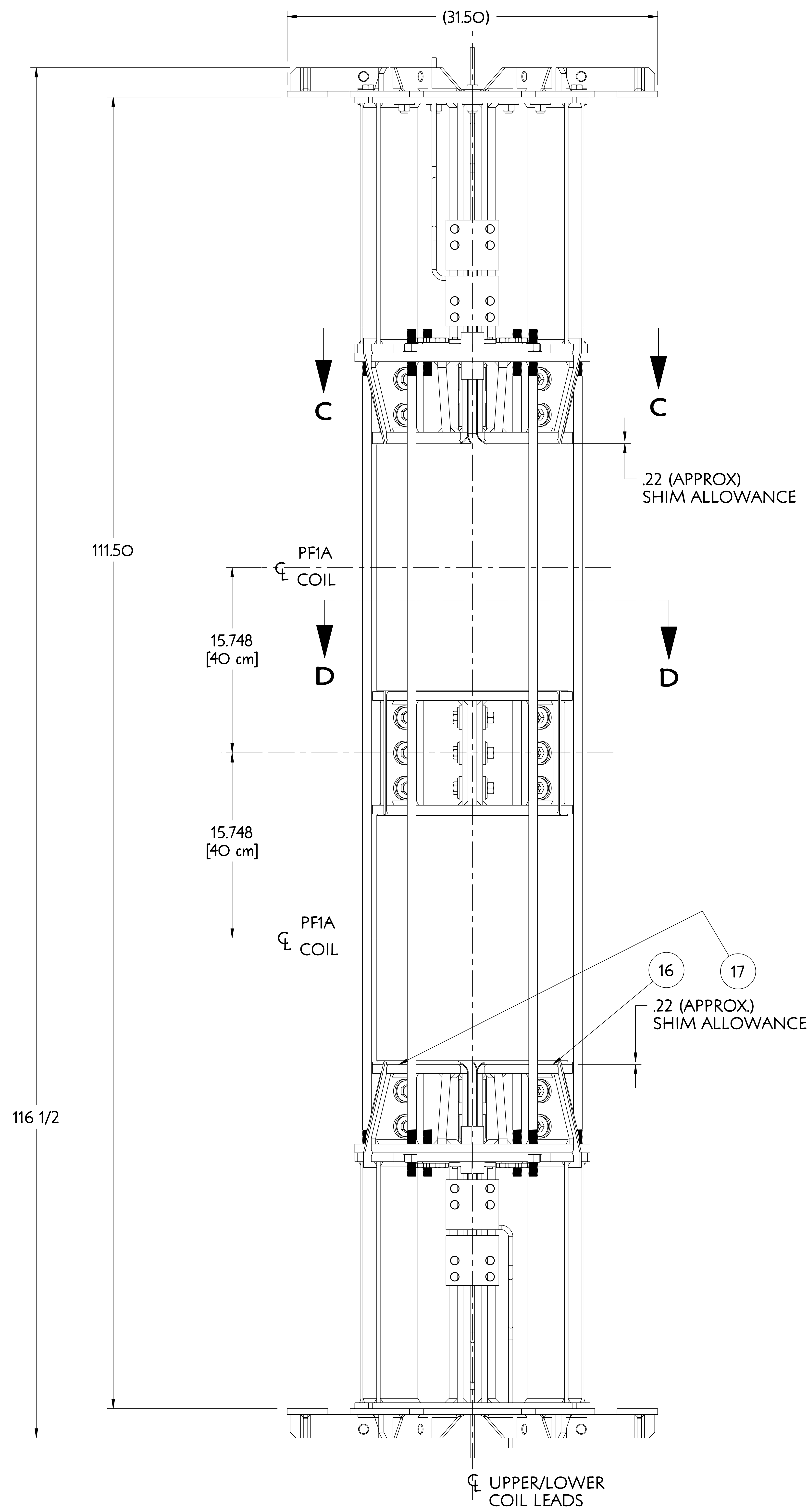
PRINCETON PLASMA PHYSICS LABORATORY  
NATIONAL COMPACT STELLARATOR EXPERIMENT  
STELLARATOR CORE  
CONVENTIONAL COILS  
CENTER SOLENOID ASSEMBLY

DSN: J. RUSHINSKI  
CHK:  
ENGR: F. DAHLGREN  
SUPV:

DRAWING NO:  
**SE132-201**

SHEET 1 OF 3  
REV 0

NCSX-SE132-201



**PLAN VIEW**  
SCALE 0.500

2	SE132-235-6	CENTER SOLENOID END SUPPORT LEAD AREA INSULATION	SIGIM-CR	4
1	SE132-235-5	CENTER SOLENOID END SUPPORT INSULATING SHIM	G11-CR	4
<b>PART NO.</b>	<b>DRAWING NO</b>	<b>NOMENCLATURE OR DESCRIPTION</b>	<b>MATERIAL</b>	<b>QTY REOD</b>
PARTS LIST				
COMPUTER GENERATED DRAWING MANUAL CHANGES NOT PERMITTED	CENTRAL FILES: UNLESS OTHERWISE SPECIFIED	PRINCETON PLASMA PHYSICS LABORATORY NATIONAL COMPACT STELLARATOR EXPERIMENT		
Pro E	DIMENSIONS ARE IN INCHES MACHINE SURFACES	STELLARATOR CORE CONVENTIONAL COILS CENTER SOLENOID ASSEMBLY		
DO NOT VERIFY INFORMATION BY SCALING DRAWING	BREAK SHARP EDGES .005/.020	TOLERANCES NON-CUMULATIVE	DSN: J. RUSHINSKI	DRAWING NO:
SCALE 0.250	DECIMAL-INCH FRACTIONS	CHK:	ENGR: F. DAHLGREN	<b>SE132-201</b>
NEXT ASSEMBLY	.XX +/- .030 12°-12° +/- .118 .XXX +/- .005 72°-120° +/- .114 ANGULAR +/- .0°-15° OVER 120° +/- .112	SUPV:	SHEET 2 OF 3	REV D. 3

RELEASE LEVEL: WIP  
DWG VERSION NO: 9

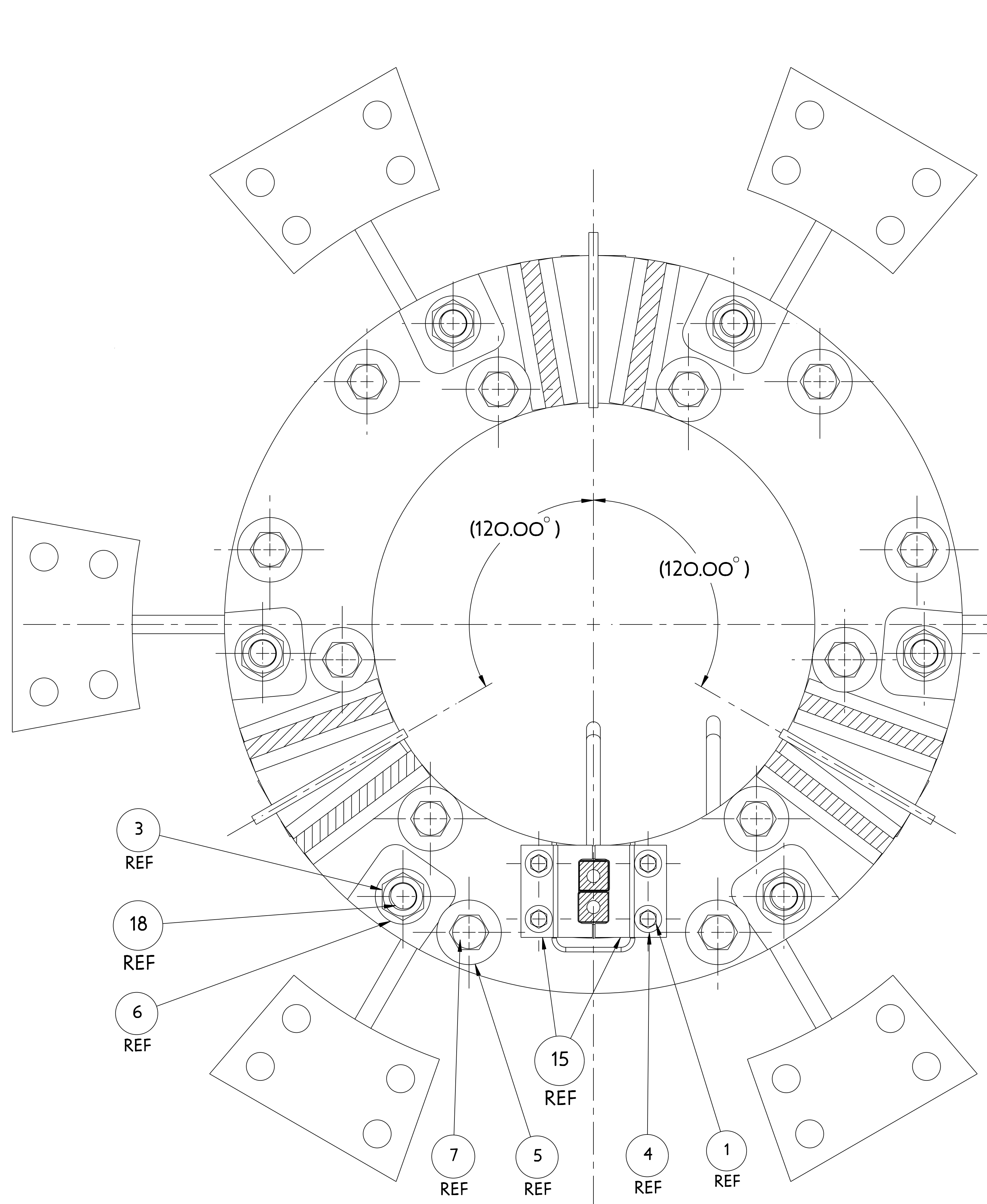
WEIGHT  
1662.6 lbs

MODEL NAME  
SE132-201

WELDING ENGINEER

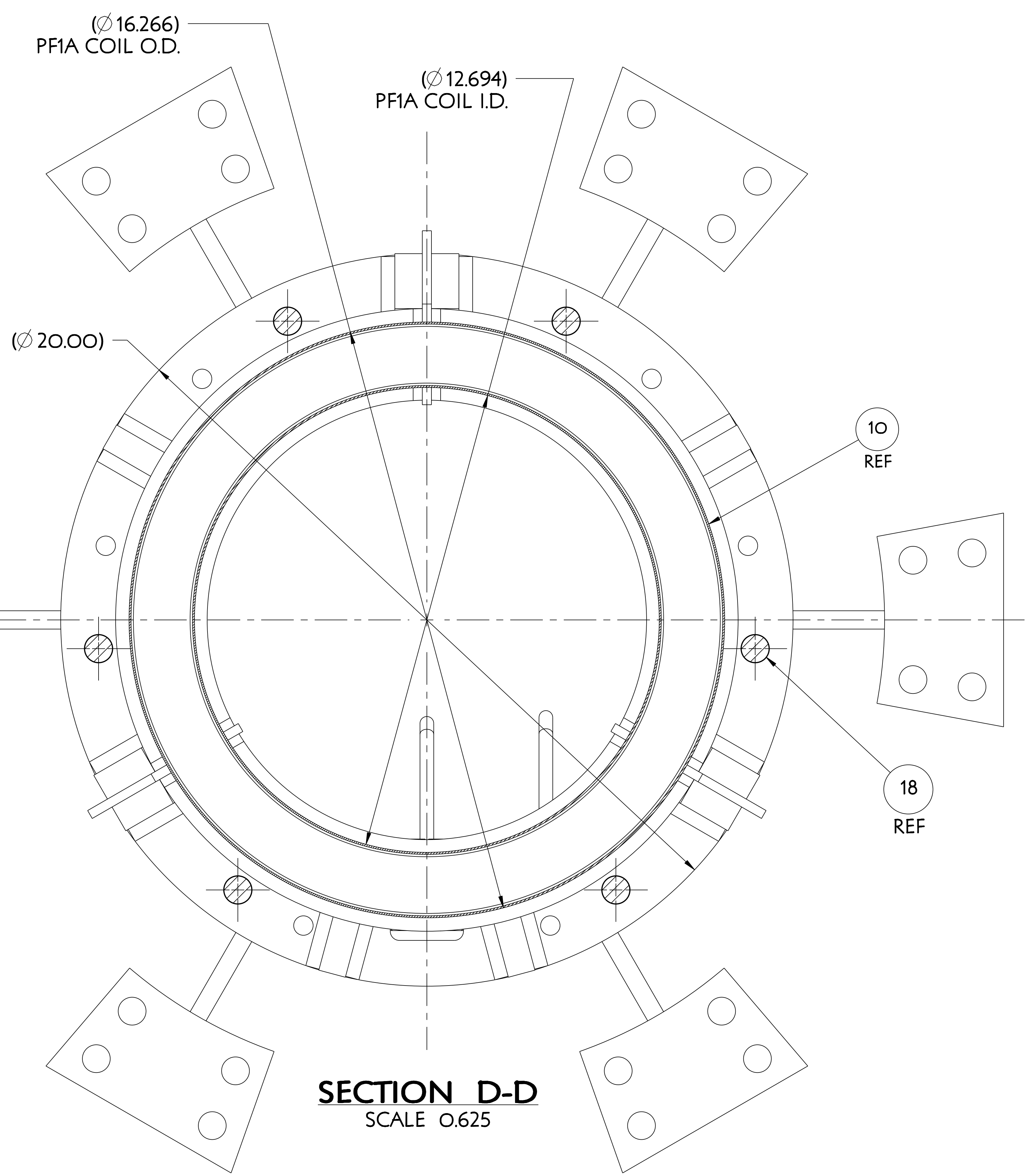
NCSX-SE132-201

NO.	REVISION	BY	CH	SUP	APPROVED	DATE



**SECTION C-C**  
SCALE 0.625

☐ COIL LEADS



**SECTION D-D**  
SCALE 0.625

PART NO.	DRAWING NO	NOMENCLATURE OR DESCRIPTION	MATERIAL	QTY	REOD
2	SE132-235-6	CENTER SOLENOID END SUPPORT LEAD AREA INSULATION	SIGIM-CR	4	
1	SE132-235-5	CENTER SOLENOID END SUPPORT INSULATING SHIM	G11-CR	4	
PARTS LIST					
COMPUTER GENERATED DRAWING MANUAL CHANGES NOT PERMITTED Pro E		CENTRAL FILES: UNLESS OTHERWISE SPECIFIED DIMENSIONS ARE IN INCHES MACHINE SURFACES BREAK SHARP EDGES .005/.020	PRINCETON PLASMA PHYSICS LABORATORY PRINCETON UNIVERSITY <b>NATIONAL COMPACT STELLARATOR EXPERIMENT</b> STELLARATOR CORE CONVENTIONAL COILS CENTER SOLENOID ASSEMBLY		
DO NOT VERIFY INFORMATION BY SCALING DRAWING		TOLERANCES NON-CUMULATIVE	DSN: J. RUSHINSKI	DRAWING NO:	
NEXT ASSEMBLY		DECIMAL-INCH FRACTIONS	CHK: ENGR: F. DAHLGREN	<b>SE132-201</b>	
		.XX +/- .030 .XXX +/- .005 ANGULAR +/- .015	SUPV:	SHEET 3 OF 3	REV D. 3

RELEASE LEVEL: WIP  
DWG VERSION NO: 9

WEIGHT  
1662.6 lbs

MODEL NAME  
SE132-201

WELDING ENGINEER

NCSX-SE132-201