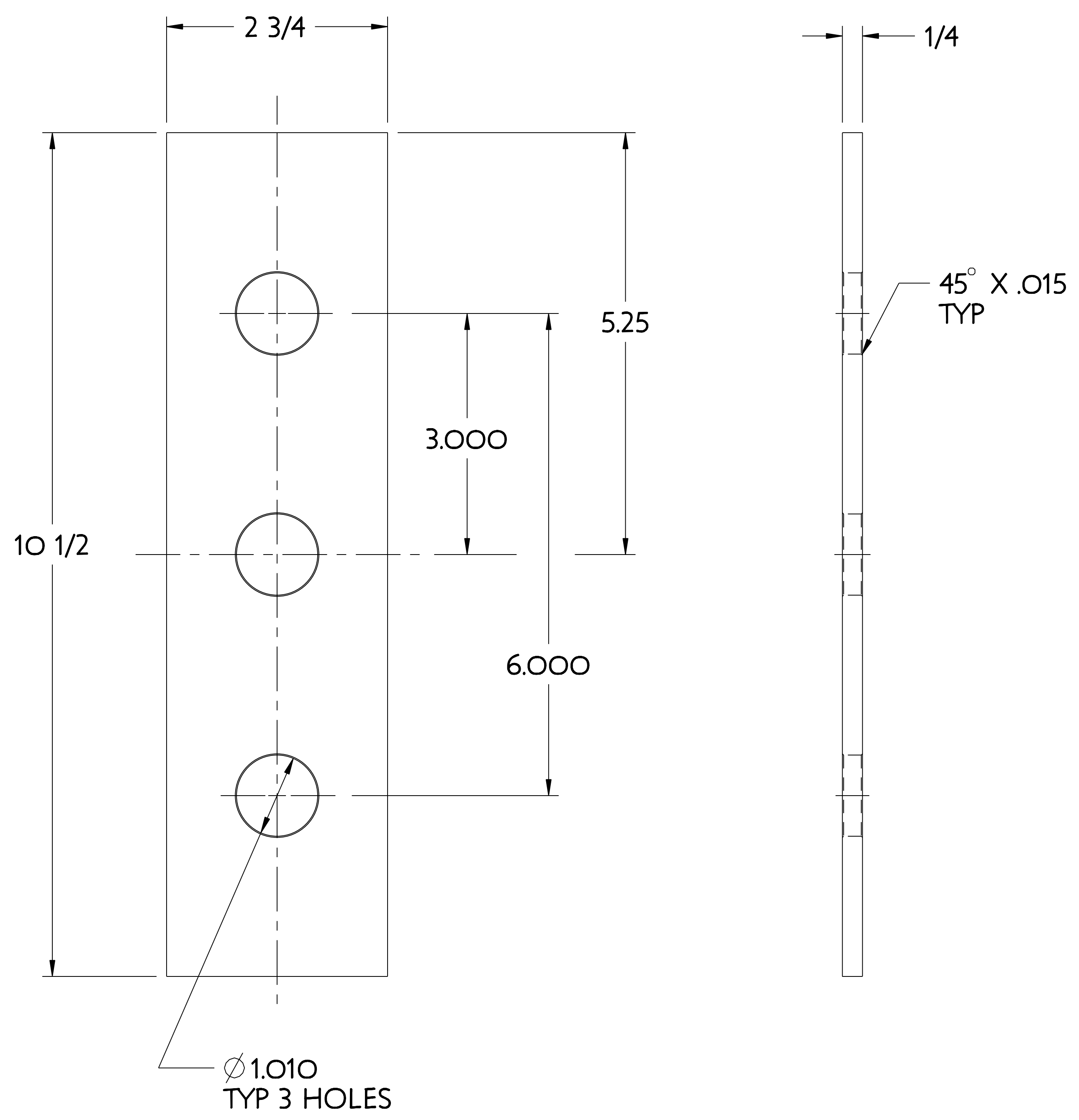
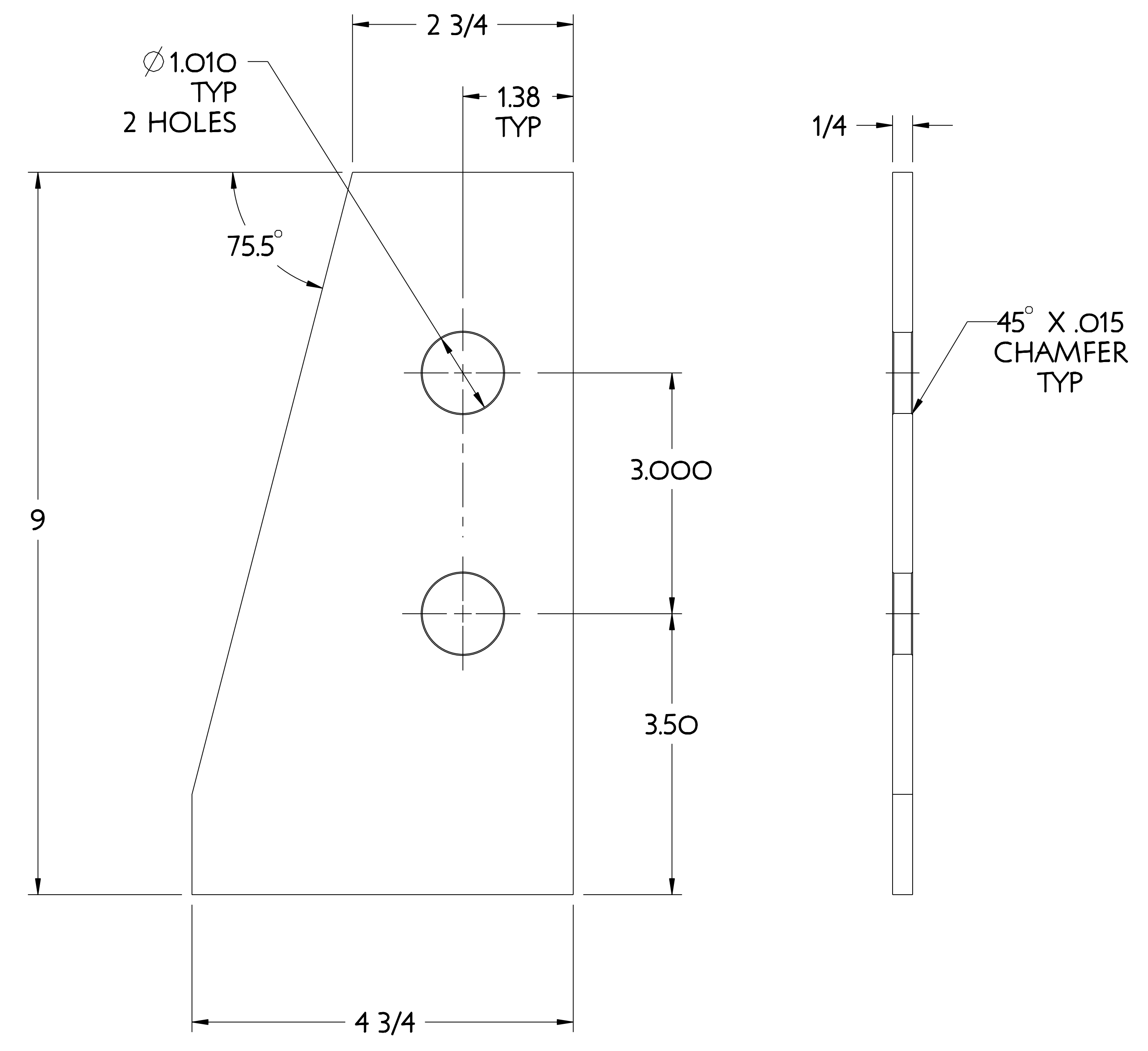


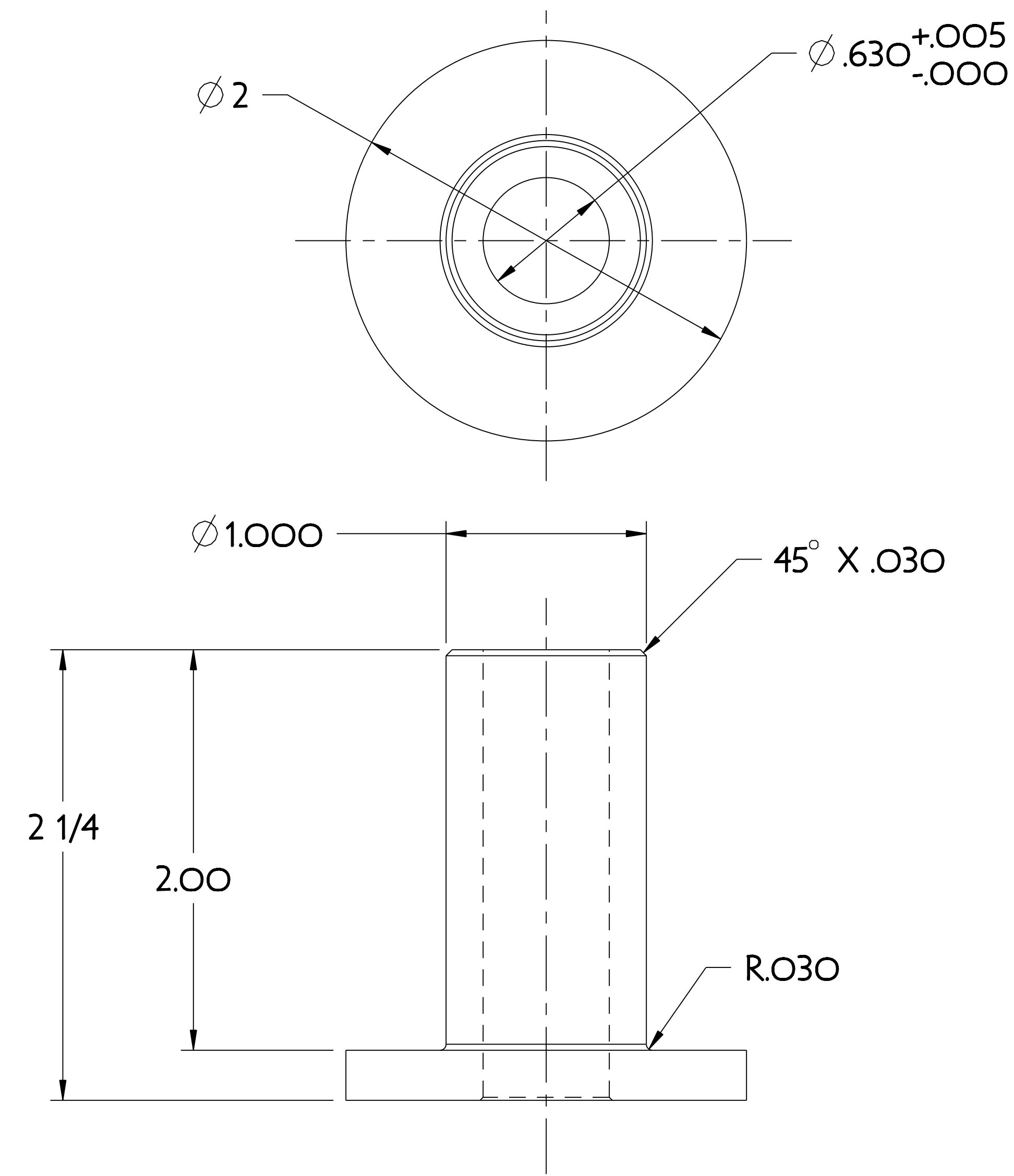
NO.	REVISION	BY	CH	SUP	APPROVED	DATE



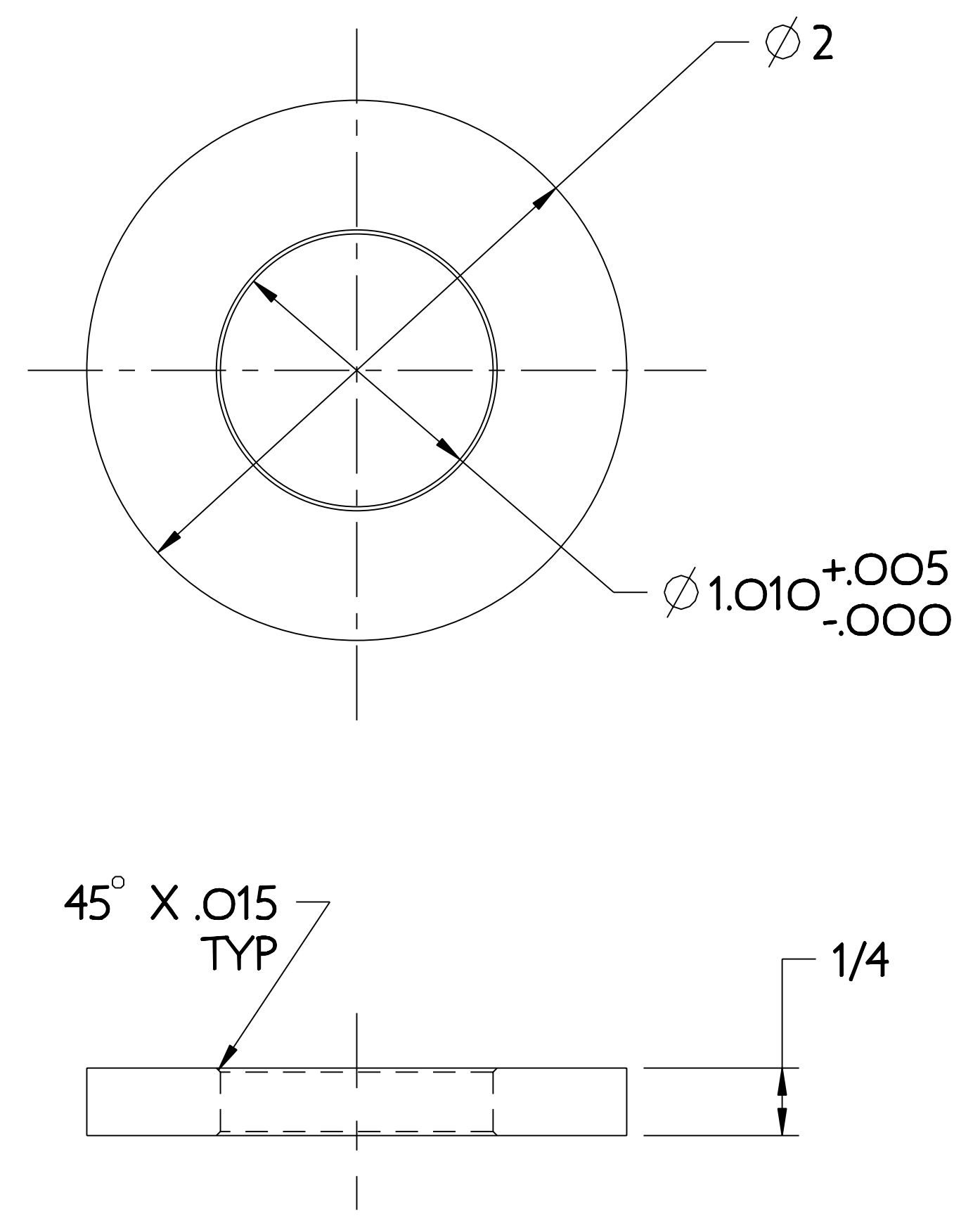
1 INSULATION PLATE



4 END SUPPORT INSULATION PLATE



2 FLANGED BUSHING



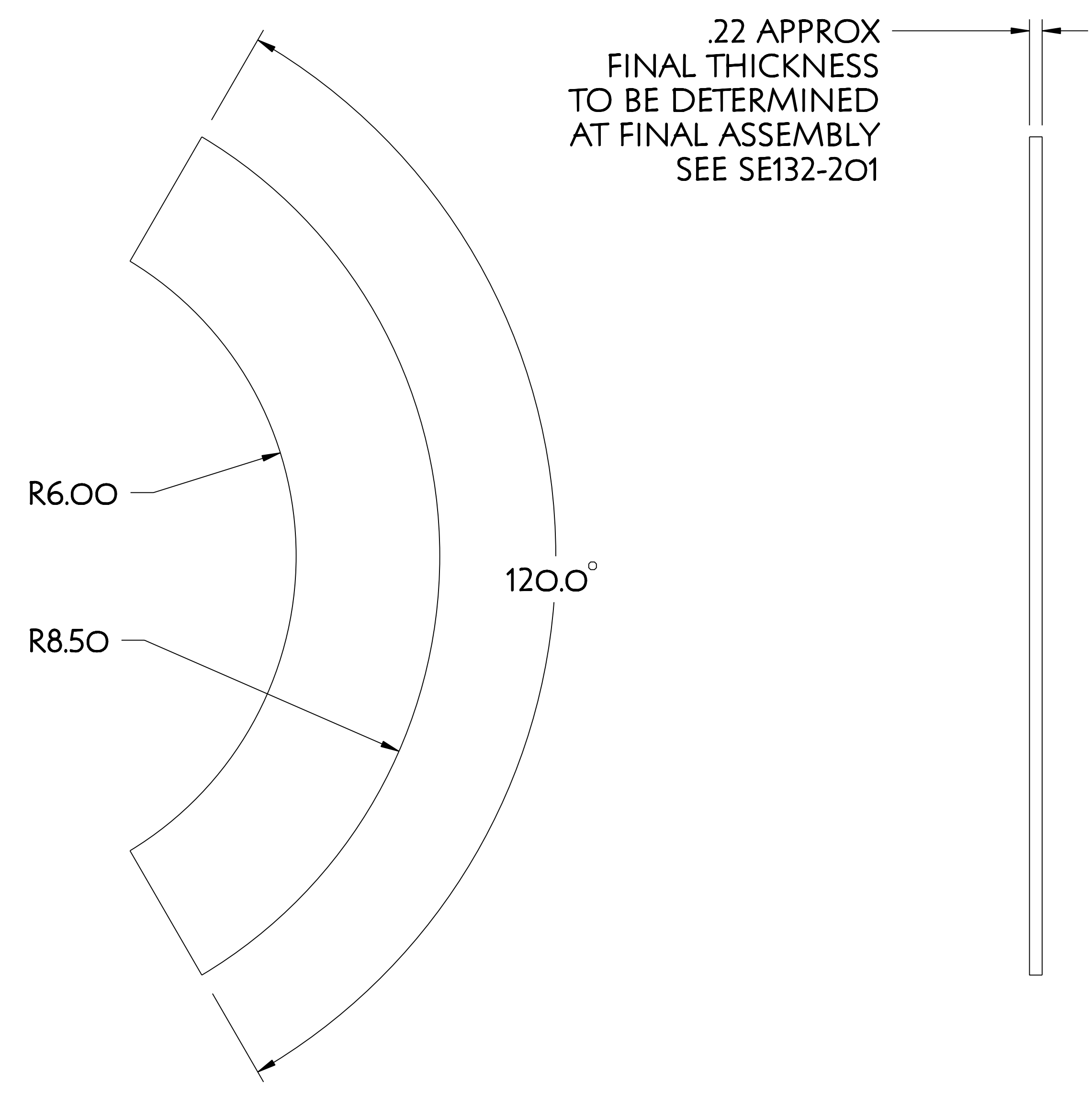
3 INSULATING WASHER

PART NO.	DRAWING NO	NOMENCLATURE OR DESCRIPTION	MATERIAL	QTY	RECD
4	SE132-235-4	CENTER SOLENOID END SUPPORT INSULATING PLATE	G11-CR		
3	SE132-235-3	INSULATING FLAT WASHER FOR 1" OD BUSHING	G11-CR		
2	SE132-235-2	FLANGED INSULATING BUSHING FOR 5/8 BOLT	G11-CR		
1	SE132-235-1	CENTER SOLENOID CENTER SUPPORT INSULATING PLATE	G11-CR		

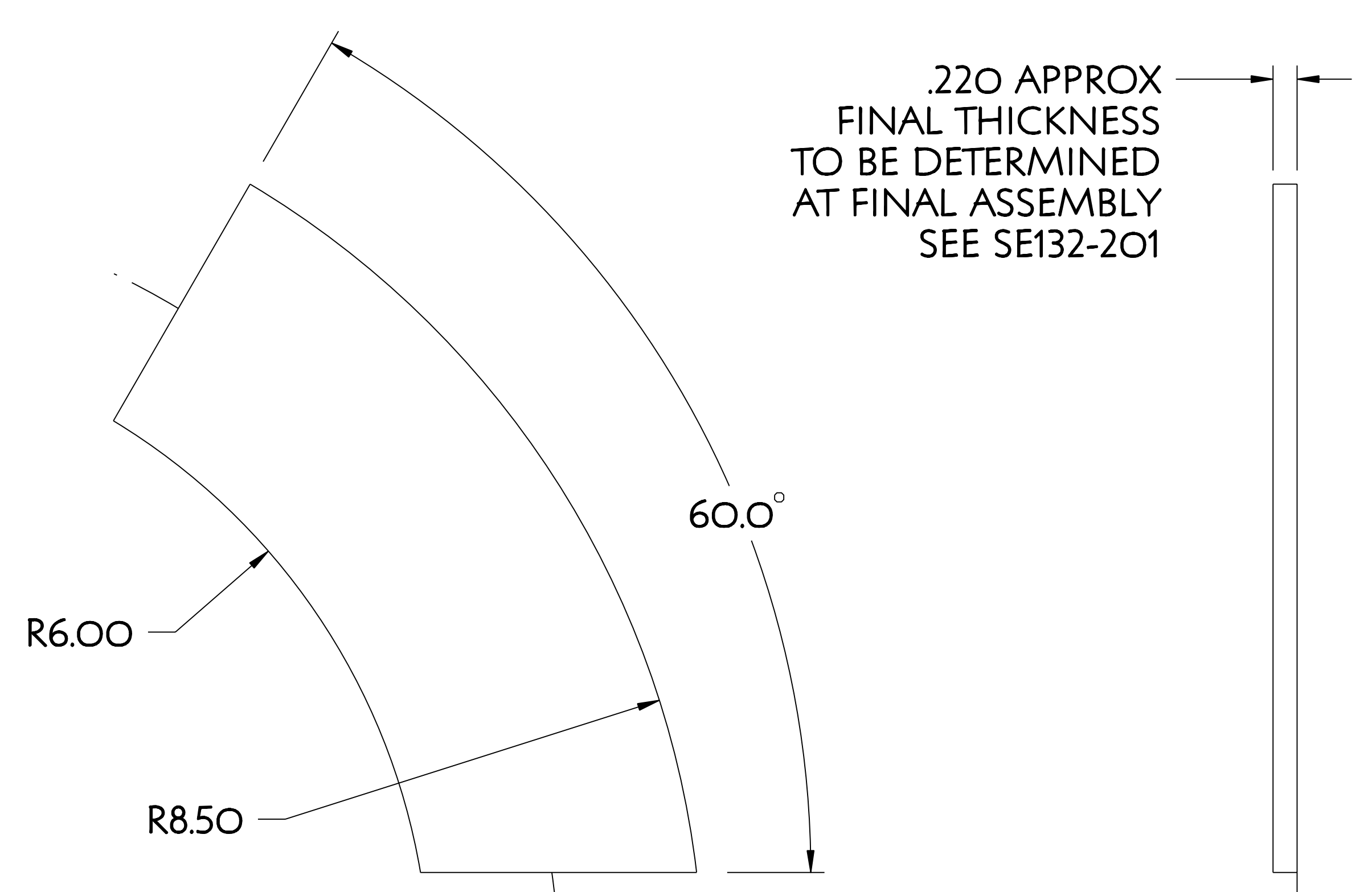
COMPUTER GENERATED DRAWING MANUAL CHANGES NOT PERMITTED Pro E	CENTRAL FILES: UNLESS OTHERWISE SPECIFIED	PRINCETON PLASMA PHYSICS LABORATORY PRINCETON UNIVERSITY NATIONAL COMPACT STELLARATOR EXPERIMENT
DO NOT VERIFY INFORMATION BY SCALING DRAWING	DIMENSIONS ARE IN INCHES MACHINE SURFACES BREAK SHARP EDGES .005/0.020	STELLARATOR CORE CONVENTIONAL COILS CENTER SOLENOID CENTER SUPPORT INSULATION DETAILS
NEXT ASSEMBLY	TOLERANCES NON-CUMULATIVE DECIMAL-INCH FRACTIONS .XX +/- .030 .XXX +/- .005 ANGULAR +/- .05	DSN: J. RUSHINSKI CHK: ENGR: F. DAHLGREN SUPV:
WEIGHT 0.1 lbs	MODEL NAME SE132-235-6	DRAWING NO: SE132-235
RELEASE LEVEL: WIP DWG VERSION NO: 3	WELDING ENGINEER	SHEET 1 OF 2 REV D, 14

NCSX-SE132-235

NO.	REVISION	BY	CH	SUP	APPROVED	DATE



5 INSULATION SHIM
SCALE 0.625



6 INSULATION SHIM
LEAD AREA

6	SE132-235-6	CENTER SOLENOID END SUPPORT LEAD AREA INSULATION SHIM	G11-CR	4
5	SE132-235-5	CENTER SOLENOID END SUPPORT INSULATING SHIM	G11-CR	4

PART NO.	DRAWING NO	NOMENCLATURE OR DESCRIPTION	MATERIAL	QTY RECD
PARTS LIST				

COMPUTER GENERATED DRAWING MANUAL CHANGES NOT PERMITTED	CENTRAL FILES: UNLESS OTHERWISE SPECIFIED	PRINCETON PLASMA PHYSICS LABORATORY PRINCETON UNIVERSITY		
Pro E	DIMENSIONS ARE IN INCHES MACHINE SURFACES	NATIONAL COMPACT STELLARATOR EXPERIMENT		
DO NOT VERIFY INFORMATION BY SCALING DRAWING	BREAK SHARP EDGES .005/.020	STELLARATOR CORE CONVENTIONAL COILS CENTER SOLENOID CENTER/END SUPPORT INSULATION DETAILS		
TOLERANCES NON-CUMULATIVE	DSN: J. RUSHINSKI	DRAWING NO:		
NEXT ASSEMBLY	DECIMAL-INCH FRACTIONS	CHK:	SE132-235	
	.XX +/- .030 0°-120° +/- .010	ENGR: F. DAHLGREN		
	.XXX +/- .005 120°-120° +/- .010	SUPV:	SHEET 2 OF 2	
	ANGULAR +/- .0°-15° OVER 120° +/- .010		REV D, 14	

RELEASE LEVEL: WIP
DWG VERSION NO: 4

WEIGHT
0.6 lbs

MODEL NAME
SE132-235-6

WELDING ENGINEER