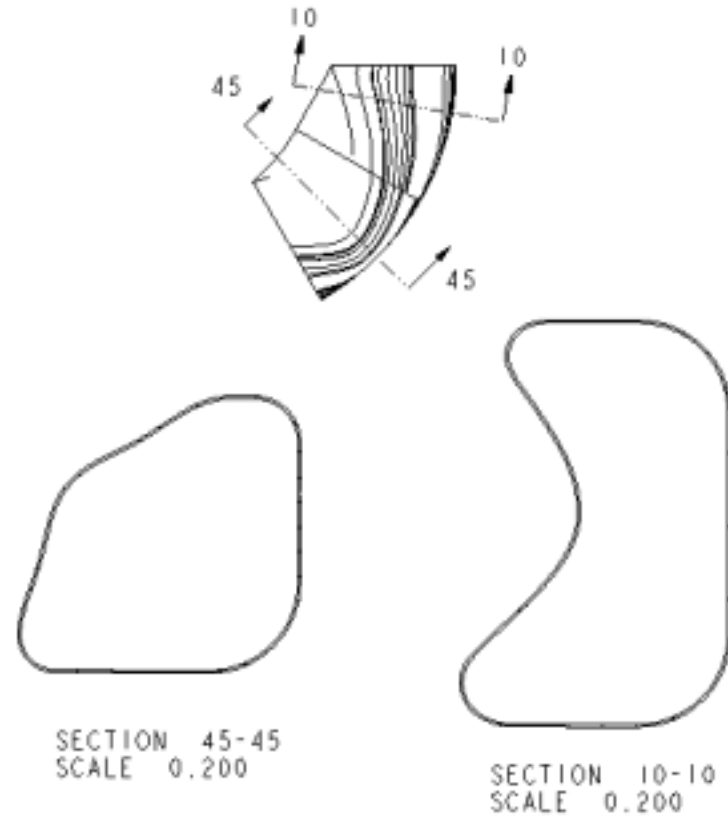
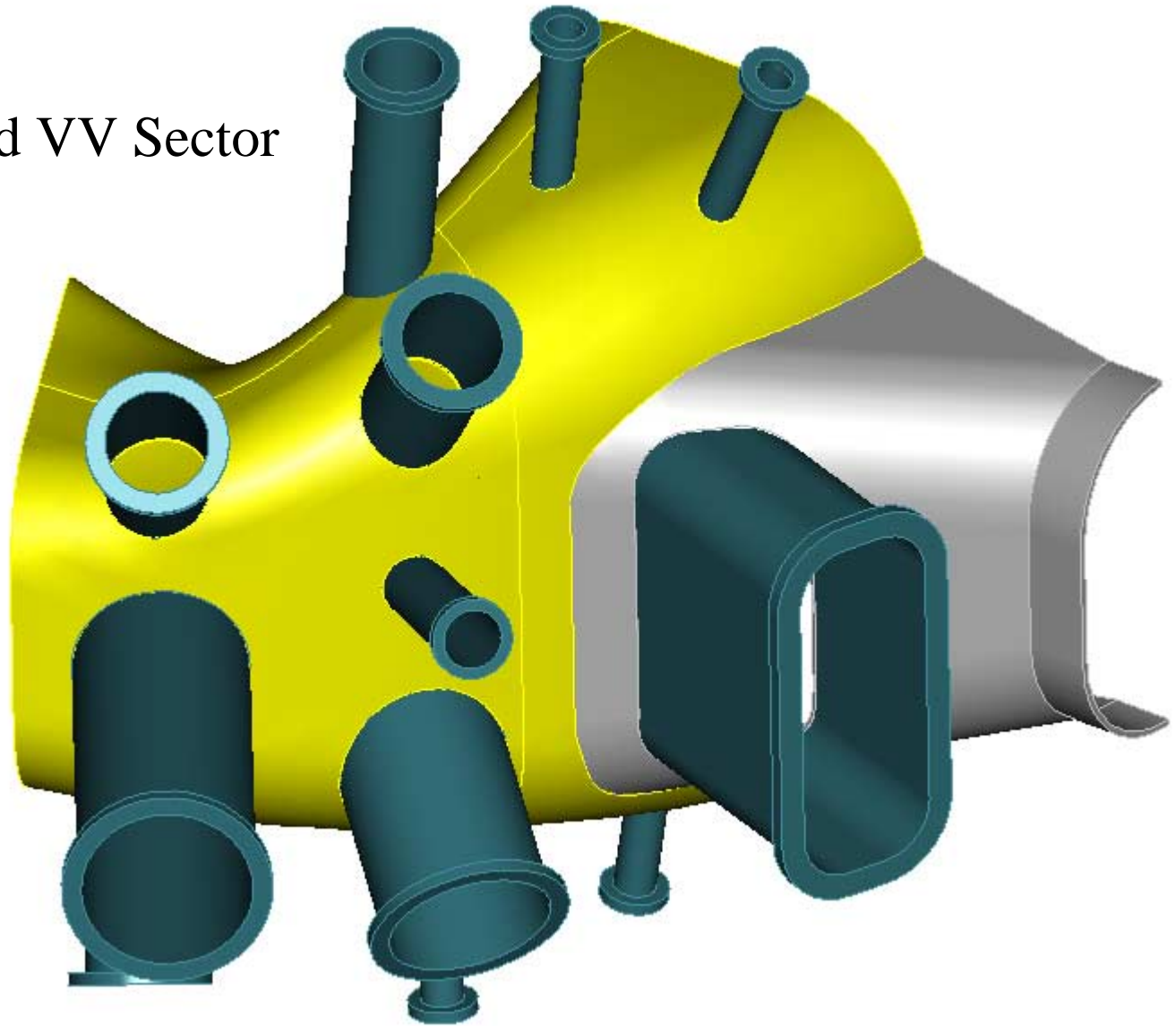


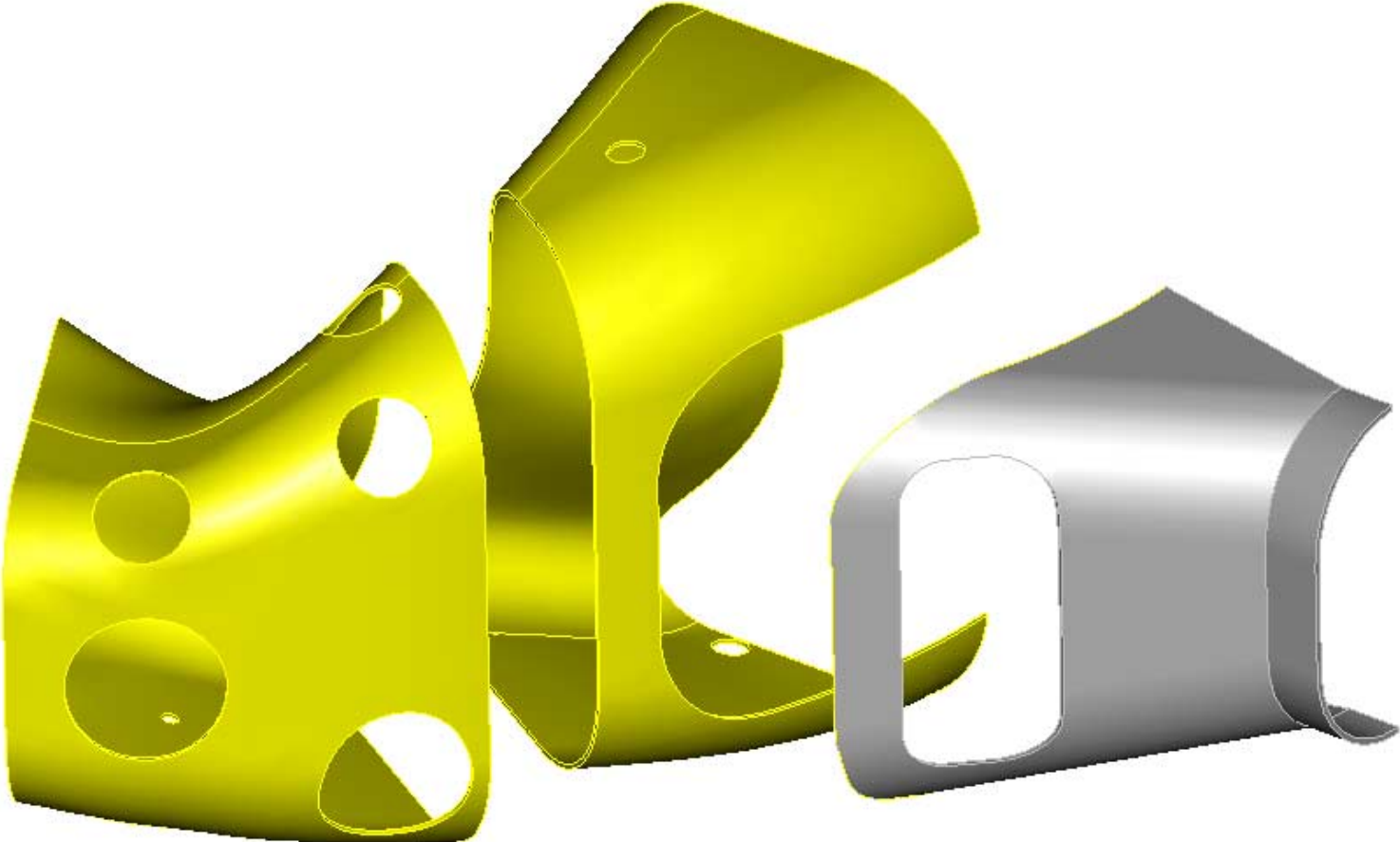
Typical section cuts through VV shell with no port holes.



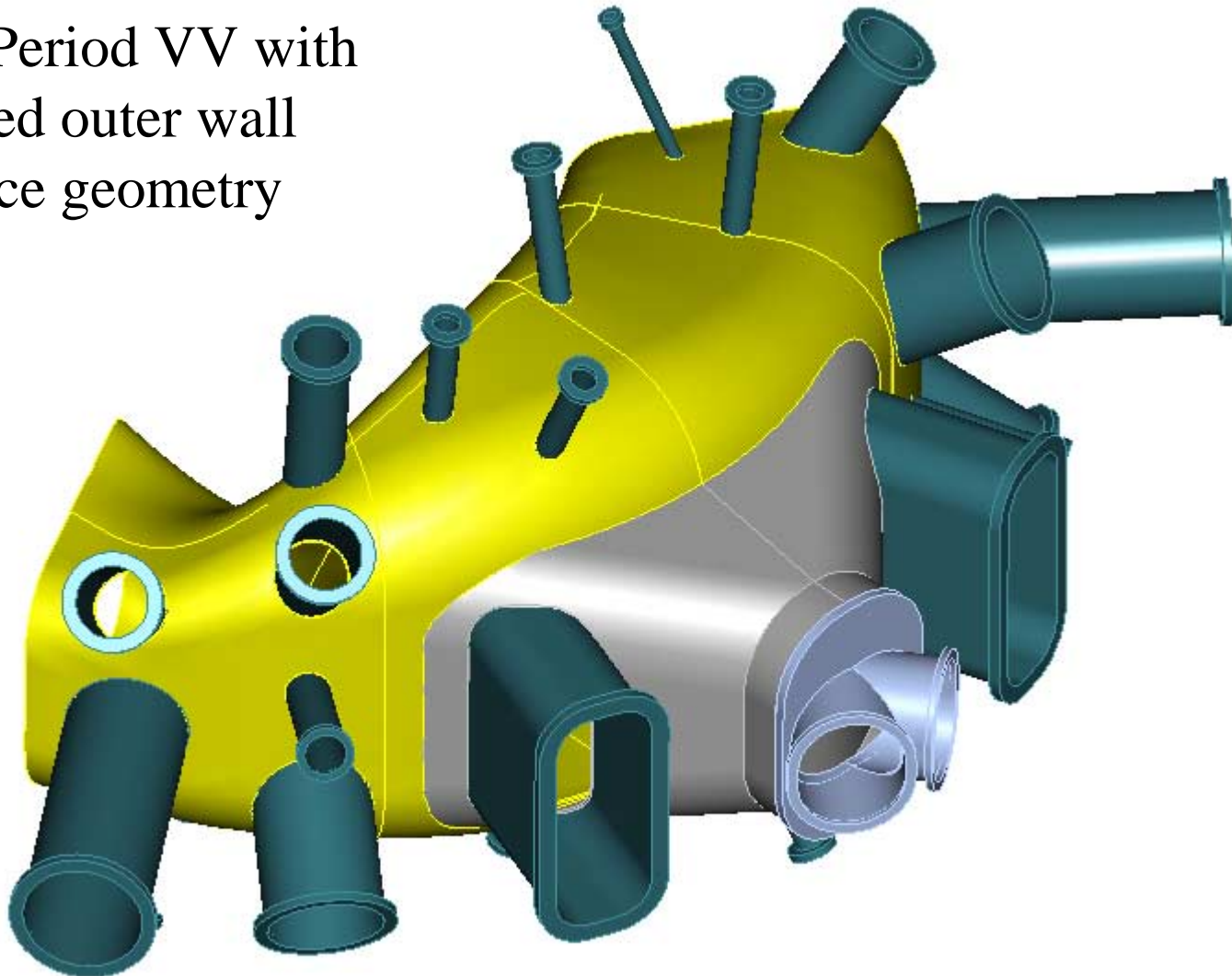
Half Period VV Sector

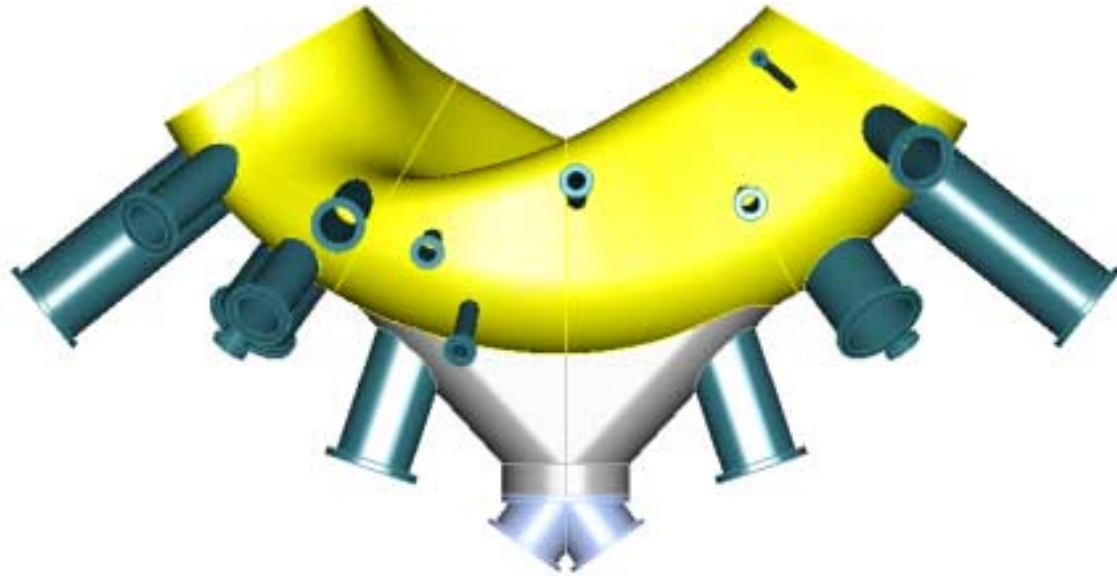


Exploded view of component parts

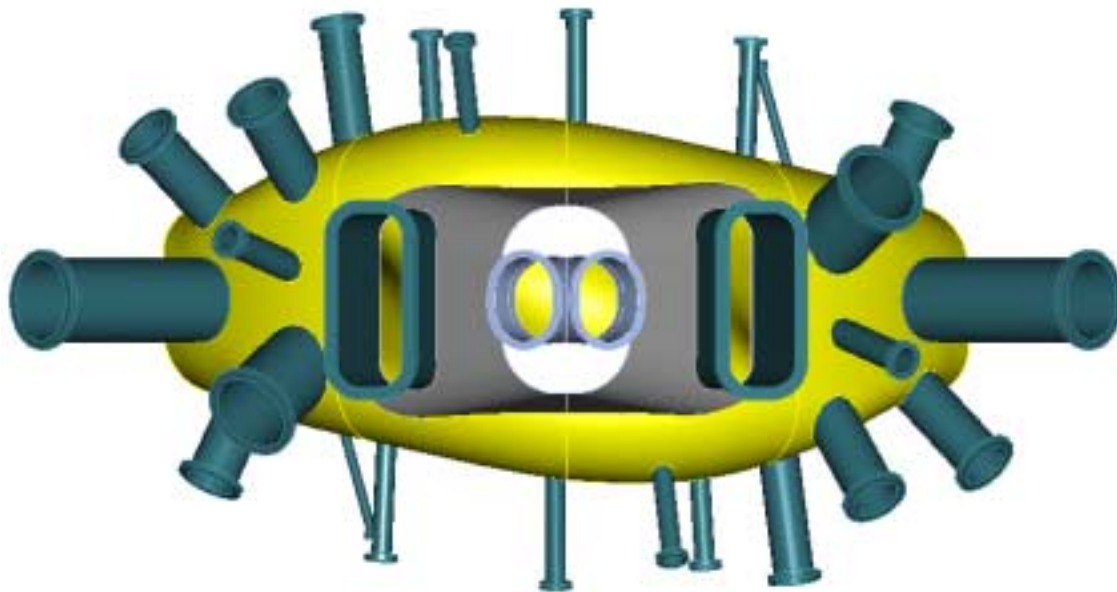


Full Period VV with  
revised outer wall  
surface geometry



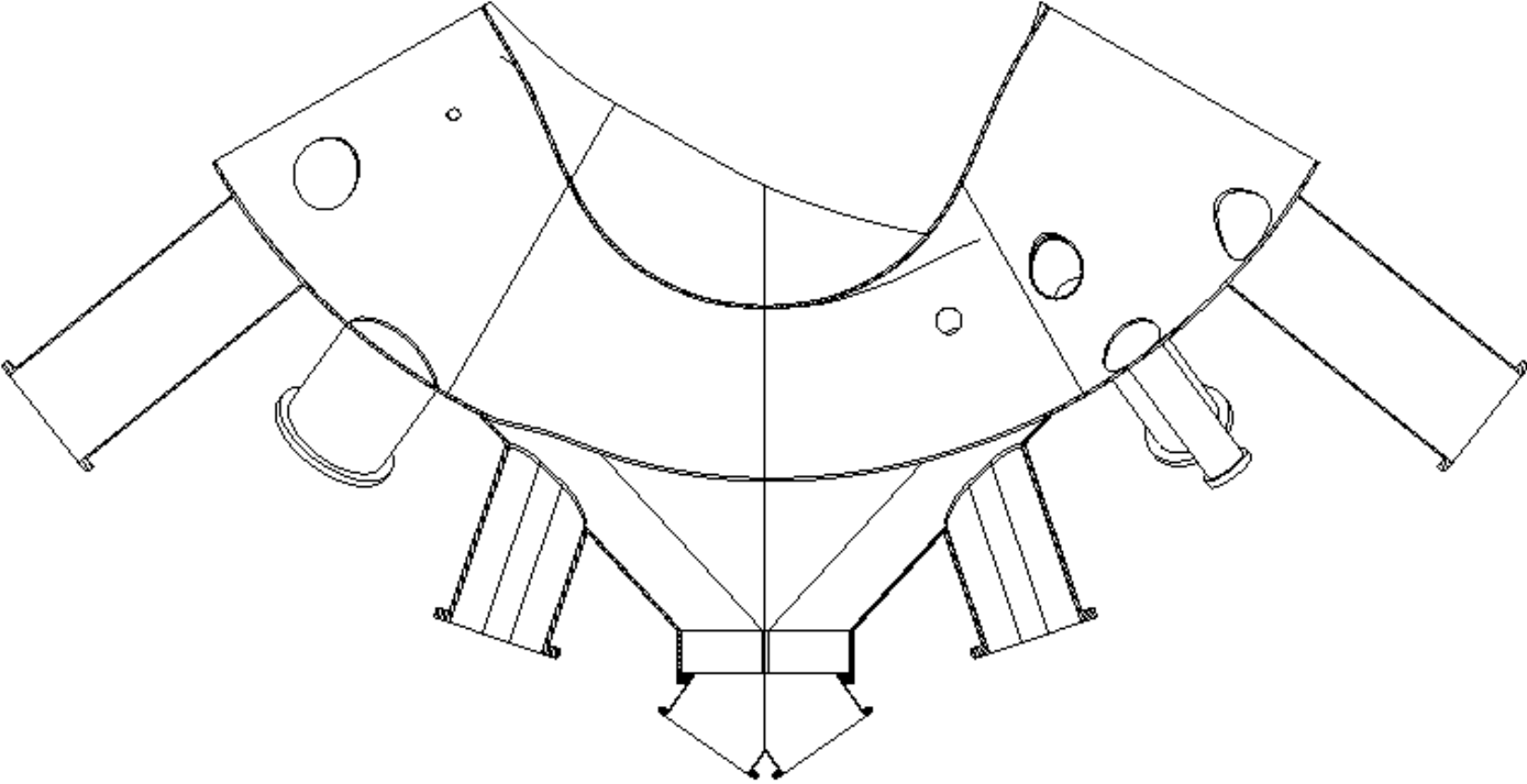


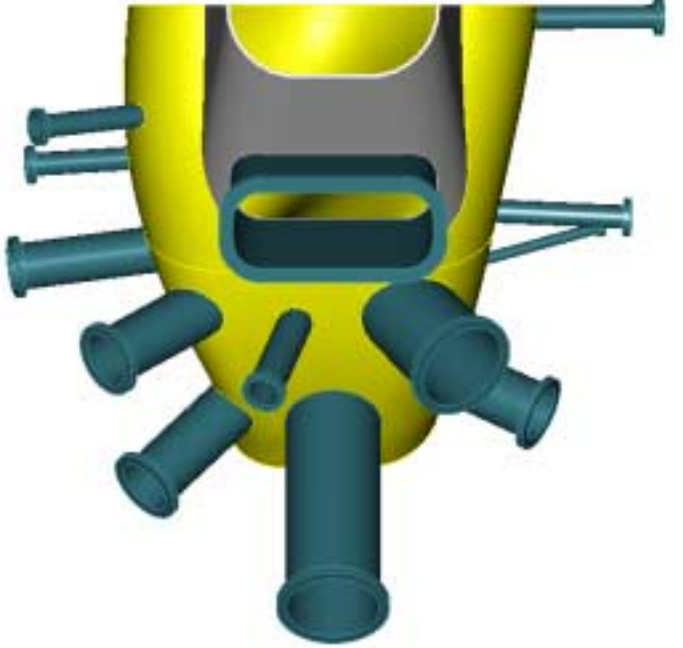
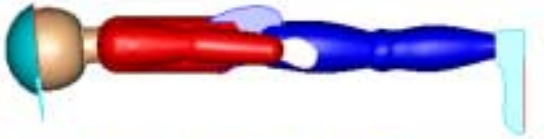
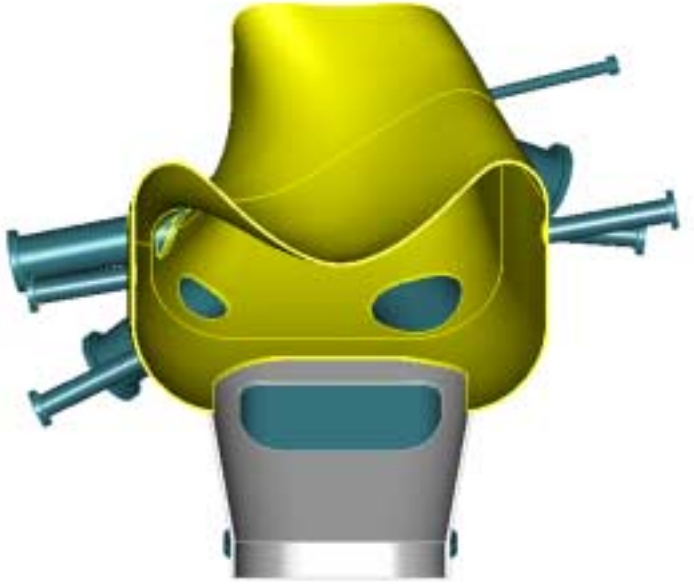
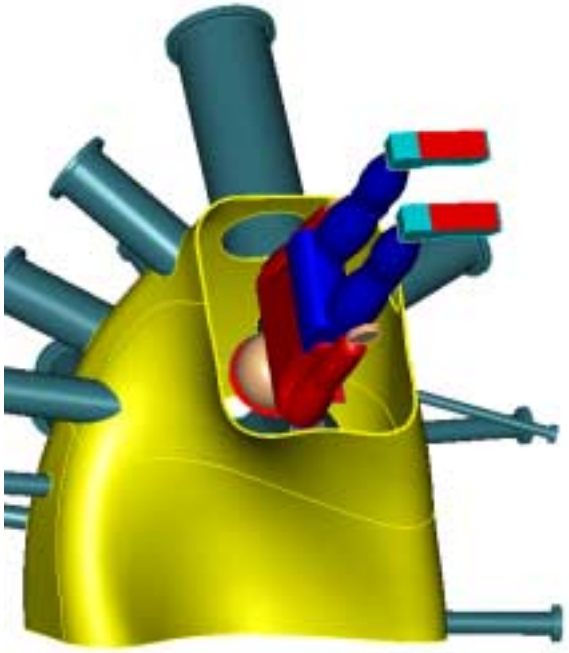
Top View

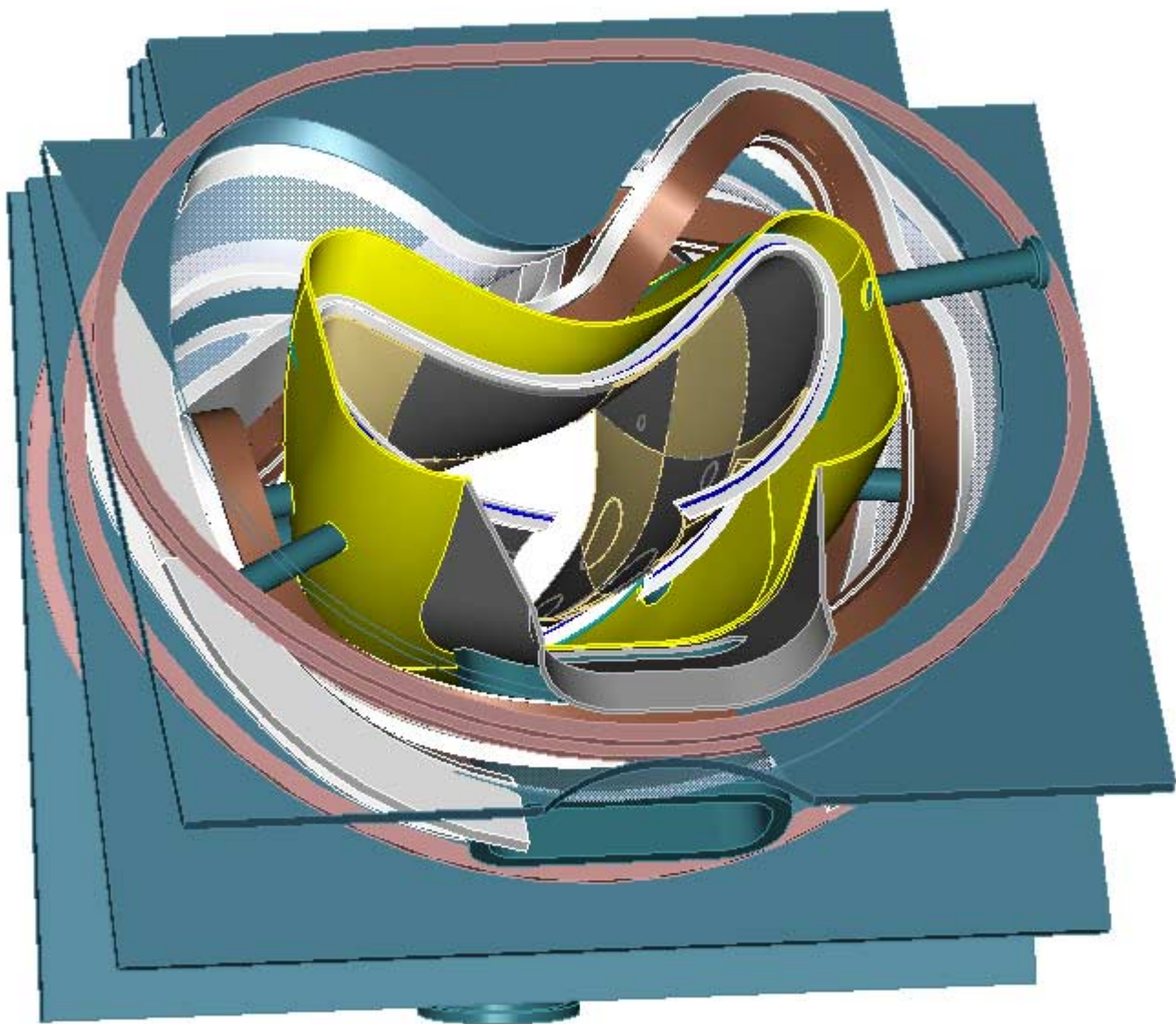


Front View

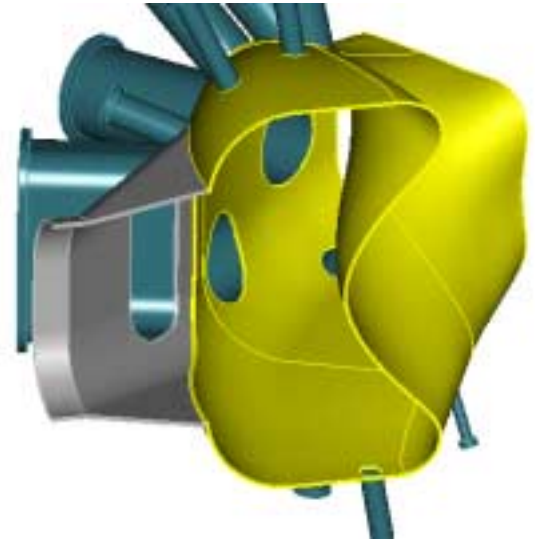
# Section Cut – Plan View



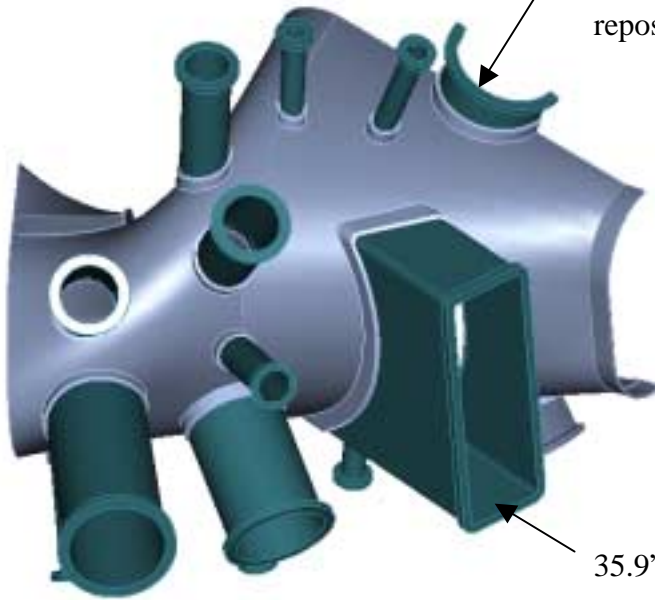






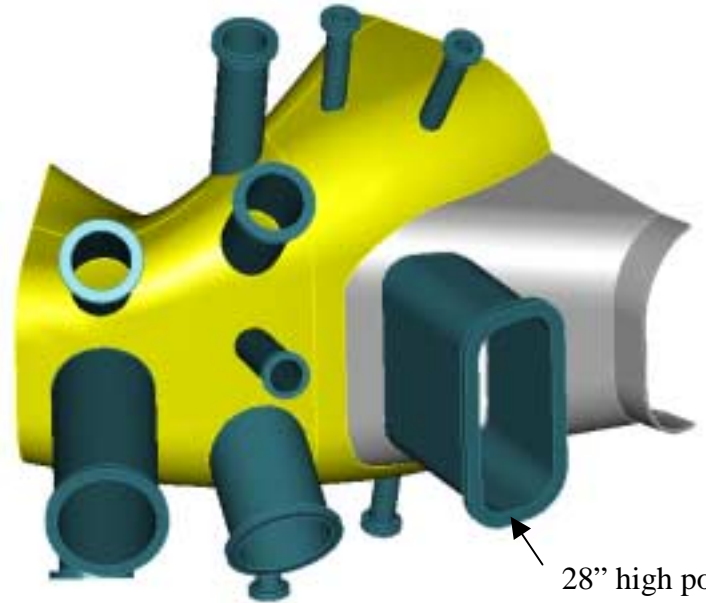


Have not shown this port. It would need to be a smaller diameter or repositioned.



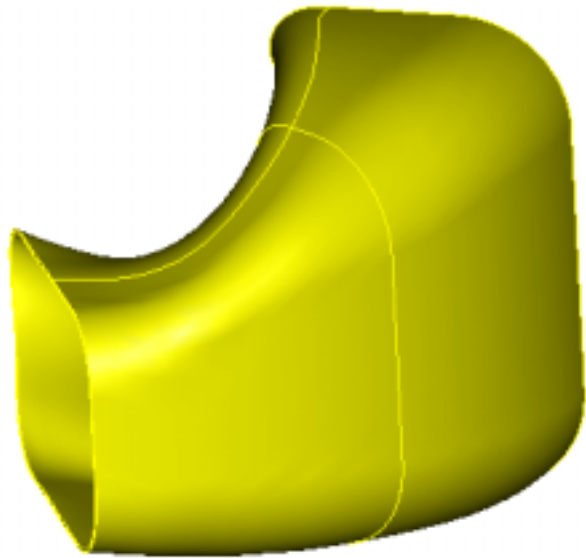
35.9" high port

Baseline

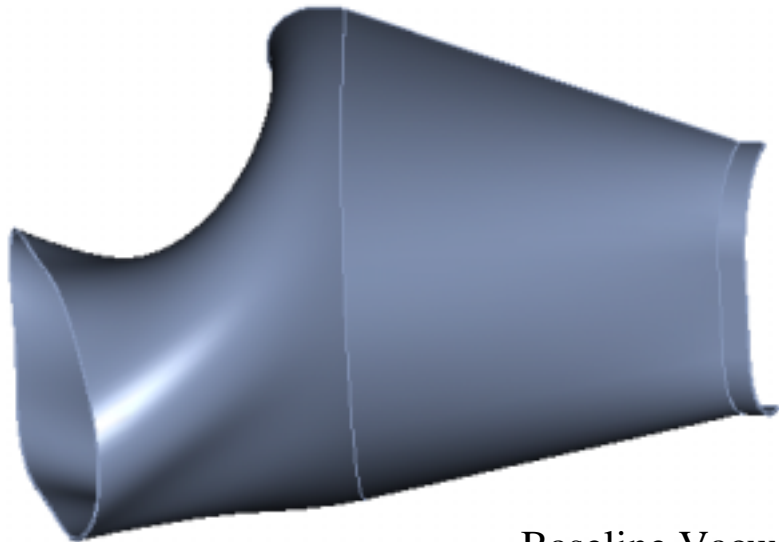
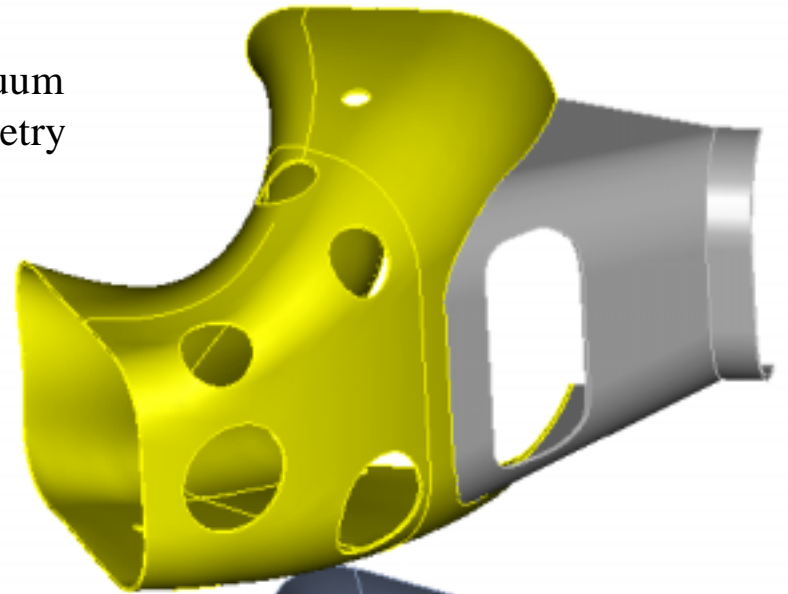


28" high port

Revised VV outer shape



Revised Vacuum  
Vessel Geometry



Baseline Vacuum Vessel

