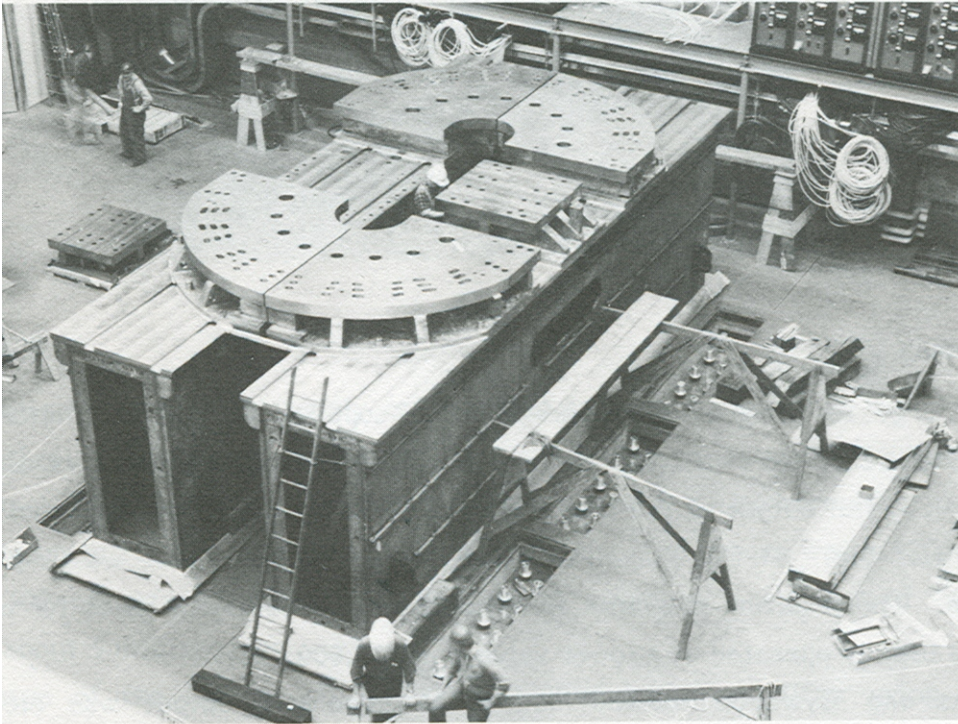


Include Fall Protection in Your Design

We are now at a point where much of our fabrication/installation work must be done while standing on something other than the floor. Be sure to include the need for fall protection in your design and in your plans so it can be done properly and without impacting your schedule. Ask for help from Industrial Hygiene or engineers who have built scaffolds and platforms. Keep in mind that the rules for work platforms have changed considerably since the Model C Stellarator was built in the CS Building.



The base of the C stellarator consisted of 365,000 pounds of nonmagnetic 305 stainless steel. It provided rigid support for parts subject to magnetic forces of 3,000,000 pounds.

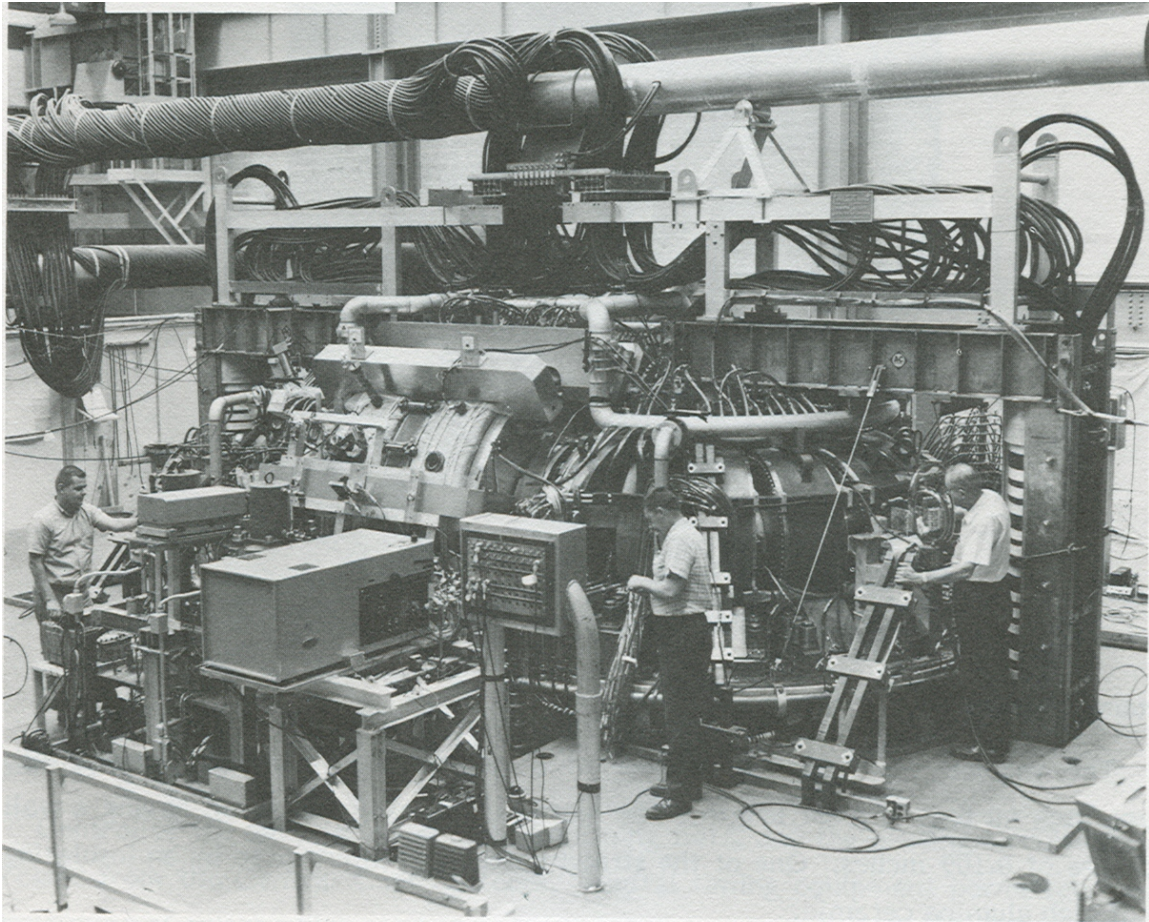
Make sure that your Fall Protection and Ladder Safety training is up to date.

Remember that scaffolds must be inspected before every shift by someone who is qualified to do so.

Remember that platforms must be engineered and inspected before use.

Remember that full body harnesses must be tied off to something that can hold at least 5,000 lbs for each person who is tied off to it.

Remember to ask Industrial Hygiene to review your Fall Protection plans before the work starts and to include the details of the Fall Protection requirements for your job on the JHA.



Model C stellarator in 1963