

NCSX Project Meeting July 16, 2008

Background: This is a report of the Project Meeting held Wednesday, July 16th.

The focus of this meeting was to review the proposed revised NCSX Project closeout activities and to discuss the overall closeout plans.

Meeting Minutes:

Safety Briefing – Hutch Neilson reviewed the requirements on when a Job Hazard Analysis (per ESH-004) is needed. In general, a JHA is needed prior to starting a job with hazards or an updated JHA is needed whenever a new hazard is identified on an existing job. “Routine” work such as office work, or repetitive technician task of a minor nature generally do not require a JHA, but should be evaluated periodically to see one is needed. He requested that all personnel re-read ESH-004.

In addition, he reminded supervisors who have been trained in the STOP program of the requirement to perform STOP safety audits every two weeks of their work places and to complete the audit reports and submit them to ES&H.

Project Status – Hutch then updated the Project on the current status and plans for providing an “orderly shutdown” on NCSX. Based guidance provided this morning, the proposed MIE closeout scope should proceed as planned until firm DOE direction received. However, it appears that OFES is not ready to support the proposed Stellarator R&D program put forward by PPPL/ORNL as requested by OFES. Apparently, the direction is being re-evaluated. Jeff Makiel then stated that the priority was to be upgrades of NSTX and that the stellarator R&D program would probably be a more modest effort. Revised guidance is anticipated over the next month or so.

Ron and Bob then went through the latest three week look-ahead schedule. It was noted that a significant amount of work is being completed and that jobs are being closed as the work is completed.

Action Items from this Meeting:

- Bob will contact job managers to determine their schedule for submitting data to be archived and for preparing closeout notes. He noted that additional guidance was issued on how to archive info if using a PC. (Copy attached). This information will be used to feed into Ron’s tracking log.
- Erik will clarify with Mike Williams on whether or not the NCSX Autoclave should be decommissioned or merely mothballed in anticipation of using for some of the NSTX upgrade work.

Action Items from the Previous Meetings:

- Don issued an updated Table of Contents for the Closeout Report - he will discuss with the RLMs next week.
- With the guidance/deferment of the stellarator R&D program, Erik will proceed to decommission the cryostat used for modular coil testing in the TFTR basement
(Closed)

**NCSX Project Meeting
July 16, 2008**

Attachments

- **Meeting Minutes**
- **Three Week Look-Ahead Schedule – Ron Strykowski**
- **Updated Archiving Guidance – Bob Simmons**

Activity ID	Activity Description	Forecast Start	Forecast Finish	% cmplt	ETC	FY08					FY09											
						J	J	A	S	O	N	D	J	F	M	A	M	J	J	A	S	C
Included Closeout Scope																						
Brown																						
Job: 1803/1805- FPA Tooling/Constr-BROWN																						
Station 3-Modular Coil to VVSA Assembly																						
1803S3-4	Generate laser screen trace drawings (1/2 period)	17JUL08A	06AUG08	25	8,016.30																	
1803S3-6	Station 3 simulation detail model	02JUN08A	01AUG08	75	5,676.00																	
1803S3-9	Oversite, cost and schedules, reviews	31JAN08A	30SEP08	LOE	2,649.42																	
1805S3-207	Misc assembly Cost	31JAN08A	30SEP08		3,763.26																	
Job: 8203 - Design Integration-BROWN																						
8203FY08-4	General integration activities	01FEB08A	30SEP08	LOE	10,521.38																	
Brooks																						
Job: 8204 - Systems Analysis-BROOKS																						
8204-FY08Z	Syst Analysis, studies & tech assurance FY08 etc	02JUN08A	30SEP08	LOE	31,624.75																	
Chrzanowski																						
Job: 1352 - PF Coil Procurement-CHRZANOWSKI																						
PF Coil Fabrication																						
141-038.1	PF Conductor cancellation cost	21FEB08A	18JUL08	C	93,150.00																	
Job: 1408 - MC Winding Supplies-CHRZANOWSKI																						
1408-3	Misc and safety supplies (\$7k/mo.)	23MAY07A	31JUL08	LOE	149.04																	
1408-6	VPI clean manifold contract	23MAY07A	31JUL08	80	2,484.00																	
1408-8	Cutting hardware for flange bolts	23MAY07A	31JUL08	LOE	273.24																	
1408-7	Misc tech shop support	23MAY07A	31JUL08	80	10,108.16																	
Job: 1451 - Mod Coil Winding-CHRZANOWSKI																						
Station 3-Casting Prep & Winding																						
P1-170	Instl Chill Plates,Tubing,Bag A6	02JUN08A	11JUL08		43,117.62																	
Station 5-VPI																						
P1-171V	VPI (Station 5) A6	14JUL08	22JUL08		47,514.31																	
P3-171VM	COMPLETE VPI OF 18th MOD COIL		22JUL08		0.00																	
Station 1 Post VPI																						
P2-171C	Final Clamps & Warm Test (Station1) B6	02JUN08A	23JUL08	5	22,806.54																	
P1-171C	Final Clamps & Warm Test (Station1) A6	24JUL08	14AUG08		24,006.88																	
LOE Oversight & Supervision																						
145XSPRV-3	Winding Engineering oversight and supervision	01MAY07A	30SEP08	LOE	31,832.46																	
145XSPRV-A	Winding Engineering oversight and supervision	01NOV07A	29AUG08	LOE	56,904.69																	
Job: 1459 - Mod Coil Fabr.Punch List-CHRZANOWSKI																						
Punchlist Tech shop/RESA																						
PLTS-C5	Grinding & Drill Holes -C5	01MAY08A	30JUL08	83	3,221.98																	
PLTS-A5	Grinding -A5	01MAY08A	30JUL08	0	6,949.36																	
PLTS-B5	Grinding -B5	01MAY08A	30JUL08	0	9,476.40																	
PLTS-A6	Grinding -A6	01MAY08A	29AUG08	20	3,095.62																	
PLTS-B6	Grinding -B6	01MAY08A	29AUG08	0	9,476.40																	
PLTS-C6	Grinding & Drill Holes -C6	01MAY08A	29AUG08	23	14,593.66																	

Activity ID	Activity Description	Forecast Start	Forecast Finish	% cmplt	ETC	FY08					FY09											
						J	J	A	S	O	N	D	J	F	M	A	M	J	J	A	S	
Punchlist- Coil Technicians																						
PLCT-A6	Insul,measure,TC,SG other punch list-A6	01OCT07A	31JUL08	36	10,411.40	EM/TB etc =132hr ;																
PLCT-B6	Insul,measure,TC,SG other punch list-B6	01OCT07A	31JUL08	36	10,411.40	EM/TB etc =132hr ;																
Cole																						
Job: 1416 - Mod Coil Type AB Fnl Dsn-COLE																						
Analysis and closeout documentation																						
1416-601	Prepare EM and structural analysis of leads	31JAN08A	09JUL08	70	9,966.00	williamson etc =66h																
1416-650	Prepare cooling analysis of lead area	01JUL08	30JUL08		3,020.00	freudenberg etc =160hr ;																
ECN Modifications																						
1416-810	Process completed ECN's	10JUL08*	16JUL08		0.00																	
Job: 1421 - Mod Coil Interface Design-COLE																						
Inboard Interface-CC																						
1421-3155	Resolve C-C shim FDR comments	01JUL08*	23JUL08	80	3,624.00	COLE etc =120hr ;																
1421-9000	Perform shear test	01JUL08*	30JUL08	80	6,342.00	moon etc =120hr ;freudenberg=40 ornlem=50																
Job: 1901 - Stellarator Core Mngtt&Integr-COLE																						
191 - Stellarator Core Management & Oversight																						
1901-08	WBS 191 FY08	01OCT07A	29SEP08	LOE	24,323.08	COLE etc =121hr ; NELSON etc =70																
1901-9000	Update drawing tree	01OCT07A	29SEP08	LOE	24,160.00	lovett= 160																
192 - Stellarator Core Integr & Global Analysis																						
1902-08	WBS 192 FY08	01OCT07A	29SEP08	LOE	57,388.46	COLE etc =121 m&s =20 travel= 10 MCGINNIS etc =182																
Job: 1806 - FP Assembly specs and drawings-COLE																						
Station 3-Modular Coil to VVSA Assembly																						
1803-301	Station 3 Assembly Specification	02JUL07A	15JUL08	80	7,248.00	COLE etc =24hr ;																
1803-305	Station 3 Assembly Drawings	02JUL07A	15JUL08	80	4,832.00	COLE etc =16hr ;																
Dahlgren																						
Job: 1501 - Coil Structures Design-DAHLGREN																						
1501-533	Detail CAD Drawings,BOM	01JUN07A	11JUL08	95	4,263.86	DAHLGREN etc =05hr ; RUSHINSKI etc =89h AVASARALA etc =89hr ;																
1501-533F	Integrated Stress Analysis	01OCT07A	11JUL08	95	6,021.40	DAHLGREN etc =154hr ;FAN=etc=40																
1501-536	Issue dwgs for review		11JUL08*		0.00																	
1501-549	Update C.S.Support Attacgmt Design	01MAY08A	11JUL08	95	407.34	DAHLGREN etc =05hr ; RUSHINSKI etc =10h																
1501-562	Prepare Specs for Coil Structure & CSS h/w	07JUL08	11JUL08		3,542.00	DAHLGREN etc =20hr ;																
1501-537	FDR Prep	07JUL08	11JUL08		12,370.68	DAHLGREN etc =38hr ; RUSHINSKI etc =49h																
1501-541	Coil Support Structures - FDR		11JUL08		0.00																	
Dudek																						
Job: 1431 - Mod. Coil Interface Hardware-DUDEK																						
Shims-Inboard																						
1431-110	Complete PE007677 with white engr incl rework	01JUL08	29JUL08		12,705.66	41etc =10\$;																
Ellis																						
Job: 8205 - Dimensional Control Coordin-ELLIS																						
Station 3-Modular Coil to VVSA Assembly																						
METFY08R	Support FPA Station 2	01FEB08A	30SEP08	LOE	11,196.98	ELLIS etc =45hr ; SMITH etc =45h																
STAT3 PREP	Station 3 preparations	30JUN08A	02SEP08	10	12,751.20	ELLIS etc =80hr ;																
Harris																						
Job: 8102 - NCSX MIE Management ORNL-HARRIS																						
810.105XX	Project Management Office ORNL FY08 (LOE)	01FEB08A	29SEP08	LOE	75,467.11	ORNL35 etc =07\$; HILLIS etc =70 ; HARRIS etc =282 MMORRIS etc =176 ;																

Activity ID	Activity Description	Forecast Start	Forecast Finish	% cmplt	ETC	FY08					FY09																		
						J	J	A	S	O	N	D	J	F	M	A	M	J	J	A	S	C							
810.105Z	Project Management Office ORNL FY09 (LOE)	01OCT08*	31MAR09	LOE	35,930.73																						HILLIS etc =45 ; HARRIS etc =110		
Heitzenroeder																													
Job: 8202 - Engr Mgmt & Sys Eng Sprt-HEITZENROED																													
Closeout Documentation																													
8205DC	document control & admin support	01FEB08A	31MAR09	LOE	21,307.22																						SUCH etc =142hr ; TYRELL etc =21		
8205FY08.2	Engr mgt & systems engr FY08	01FEB08A	30SEP08	LOE	136,471.75																						HEITZENROED etc =445hr ; SIMMONS etc =00 REIERSEN etc =89hr ; DUDEK etc =474 VONHALLE etc =89hr ;		
8205FY09	Engr mgt & systems engr FY09	01OCT08*	31MAR09	LOE	157,899.44																						HEITZENROED etc =315h REIERSEN etc =126hr VONHALLE etc =126hr ; SIMMONS etc =00 DUDEK etc =333		
Job: 8221 -Documentation Closeout-HEITZENROEDER																													
Closeout Documentation																													
8221-100	Technical data collection	14JUL08*	12NOV08		629,463.19																						SIMMONS =160hr BLANCHARD =40 BROOKS =100hr BROWN =375 CHRZANOWSKI =168hr COLE =80 DAHLGREN =40hr DODSON =40h DUDEK =32hr ELLIS =40 GORANSON =80hr Fogarty= 80 Phil =160; Kalish =56; labik =40; langish =24 freudenberg =120 Perry =16; Raftopoulos =220; Raki =16 rushinski =335 mike morris=20 sichta =80; smith = 14; strykowsky =160; upcavage =215 viola = 158 williamson =80 Moon=10 Nelson=10; Harris= 20; Jun=100; Gentile=20; Lew Morris=335		
8221-251	Tech presentation/paper collection	14JUL08*	09OCT08		9,966.00																						HAMPTON etc =100hr ; TYRELL etc =10		
8221-301	Guidance to collect data	02JUN08A	29SEP08		39,847.50																						SIMMONS etc =300hr ;		
8221-305	Organizing and posting data	30SEP08	27MAR09		56,203.18																						SIMMONS etc =300hr ;		
8221-401	Finalizing and archiving key analyses/reports	14JUL08*	09OCT08		138,362.12																						FREUDENBERG etc =160hr ; DAHLGREN etc = FAN etc =160hr ; AVASARALA etc =16 ZHANG etc =160hr ;		
8221-501	dell server, software, setup (non project cost	14JUL08*	09OCT08		0.00																						CARROL etc =200hr ; 41etc =18\$K ;		
8221-555	Comp. div support of web (non project cost)	14JUL08*	09OCT08		0.00																						CARROL etc =160hr ;		
8221-575	Archiving doc & files in ops center	14JUL08*	26MAR09		18,108.37																						SUCH etc =200hr ;		
8221-700	As-built Drawing Updates	01JUL08*	23DEC08		232,562.06																						EA/SB Designers etc =1995hr ;		
Kalish																													
Job: 1361 - TF Fabrication-KALISH																													
TF Title III and Fabrication Oversight																													
131-033C	Title III engr,inspection, support	02JAN08A	18SEP08	LOE	28,562.95																						KALISH etc =71hr ; 35etc =02\$K ; 41etc =00\$K ; EM/TB etc =00hr ; MEIGHAN etc =173hr ;		
TF Fabrication Contract																													
1361C-115	Fab, Test & Deliver Coil #15	17JUL08*	17JUL08		47,220.00																						49etc =47 ;		
1361C-116	Fab, Test & Deliver Coil #16	08AUG08*	08AUG08		47,220.00																						49etc =47 ;		
1361C-117	Fab, Test & Deliver Coil #17	02SEP08*	02SEP08		47,220.00																						49etc =47 ;		
1361C-118	Fab, Test & Deliver Coil #18	24SEP08*	24SEP08		47,220.00																						49etc =47 ;		
1351-195X	ALL TF COILS DELIVERED		24SEP08		0.00																						▼		
Job: 1354 - Trim Coil Design & Procurement-KALISH																													
Trim Coil **Updated estimate**																													
TRIM-170	Complete Trim Coil Detailed Drawings	25MAR08A	18JUL08	95	7,025.84																						KALISH etc =14hr ; RUSHINSKI etc =10h CRUIKSHANK etc =80hr ;		
TRIM-200	Assy drawings & parts list	01APR08A	18JUL08	95	9,988.86																						KALISH etc =04hr ; RUSHINSKI etc =10h CRUIKSHANK etc =80hr ;		
Neilson																													
Job: 8222 - Manuscripts and Papers - NEILSON																													
Prepare Closeout report																													
8222-900	Manuscripts, journal & papers (40 papers@40hrs)	02SEP08*	31MAR09		299,600.15																						ea/em=800,em/em=400;r/ travel=15		

Activity ID	Activity Description	Forecast Start	Forecast Finish	% cmplt	ETC	FY08												FY09																																																							
						J				J				A				S				O				N				D				J				F				M				A				M				J				J				A				S				C			
						1	2	3	4	5	6	7	8	9	10	11	12	13	14	15	16	17	18	19	20	21	22	23	24	25	26	27	28	29	30	31	32	33	34	35	36	37	38	39	40	41	42	43	44	45	46	47	48	49	50	51	52	53	54	55	56	57	58	59	60								
Perry																																																																									
Job: 8220 - Equipt Save & Facility Restora-PERRY																																																																									
Safe and store NCSX hardware assets																																																																									
8220-201	Coordination and oversight	01JUL08	30JAN09		60,636.94	PERRY etc=382hr ;																																																																			
8220-205	NCTC floor penetrations & PLT water hdr removal	30JUN08A	12AUG08	5	53,436.11	41etc =21\$K ; EM//TB etc =382hr ;																																																																			
8220-209	Secure platform parts from CAS Bldg to NCTC	13AUG08	26AUG08		4,163.16	41etc =00\$K ; EM//TB etc =48hr ;																																																																			
8220-219	Electr trays & hw from D-site yard to dsite pad	30JUN08A	15JUL08	80	1,238.83	41etc =01\$K ; EM//TB etc =69hr ;																																																																			
8220-223	Items f/TFTR bsmnt (incl spare MC cond) to NCTCB	01AUG08*	14AUG08		13,831.24	41etc =00\$K ; EM//TB etc =172hr ;																																																																			
8220-227	Portable AC units to Dsite crib	27AUG08	03SEP08		631.76	EM//TB etc =08hr ;																																																																			
8220-231	Drawing closeouts and field follow-up	01OCT08*	23DEC08		27,614.00	LANGELLA etc =200hr ;																																																																			
8220-235	Large and Small shield block to Dsite pad	02SEP08*	15SEP08		2,527.04	EM//TB etc =32hr ;																																																																			
8220-239	Machine mock-up to NCTC	13AUG08	19AUG08		631.76	EM//TB etc =08hr ;																																																																			
8220-243	Welding machines to RESA	01OCT08*	07OCT08		668.56	EM//TB etc =08hr ;																																																																			
8220-247	Tools to Csite crib	01OCT08*	14OCT08		2,674.24	EM//TB etc =32hr ;																																																																			
8220-251	Measuring Equipment to MU Shop	01OCT08*	07OCT08		1,337.12	EM//TB etc =16hr ;																																																																			
8220-255	Inventory parts,material, tools to new location	01OCT08*	28OCT08		6,685.60	EM//TB etc =80hr ;																																																																			
8220-409	Crates,cabinets,parts shelves f/TFTRTC to NCTCB	01OCT08*	14OCT08		10,362.68	EM//TB etc =124hr ;																																																																			
8220-415	Coil winding station to NCTC	13AUG08	26AUG08		5,054.08	EM//TB etc =64hr ;																																																																			
8220-419	MC bolts (incl crate) to NCTCB	09SEP08	15SEP08		2,076.20	41etc =00\$K ; EM//TB etc =20hr ;																																																																			
8220-427	Assemble 4 remaining MC 3 packs	04AUG08	08SEP08		25,270.40	EM//TB etc =320hr ;																																																																			
8220-431	Transport MC 3 packs (6) to NCTC	09SEP08	22SEP08		5,302.48	EM//TB etc =64hr ; 41etc =00\$K ;																																																																			
8220-501	Autoclave- Safe all AC power	23JUL08	29JUL08		3,762.80	LANGELLA etc =24hr ; EM//TB etc =08hr																																																																			
8220-505	Autoclave-Removal and store Dsite pad & NCTCB	01OCT08*	23DEC08		154,843.44	LANGELLA etc =400hr ; EM//TB etc =																																																																			
8220-901	VV Diagnostic parts incl fab crates to NCTCB	09SEP08*	15SEP08		1,669.86	41etc =0.2\$K ; EM//TB etc =18hr ;																																																																			
8220-903	Move tool crib from C-site back to D-Site	09SEP08*	15SEP08		9,476.40	EM//TB etc =120hr ;																																																																			
8220-605	VV Spool piece crates to NCTCB	01JUL08*	02JUL08		473.82	EM//TB etc = 6																																																																			
8220-423	VVSA's (incl port extension crates) to NCTC	13AUG08	26AUG08		7,176.24	41etc =01\$K ; EM//TB etc =72hr ;																																																																			
8220-609	Yellow wedge stands to NCTC	01OCT08*	02OCT08		334.28	EM//TB etc = 4																																																																			
8220-613	Wedge cover plates to NCTC	01OCT08*	02OCT08		334.28	EM//TB etc = 4																																																																			
8220-617	5 ton lift beam to RESA	01OCT08*	02OCT08		334.28	EM//TB etc = 4																																																																			
8220-621	14 ton lift beam to RESA	01OCT08*	02OCT08		167.14	EM//TB etc = 2																																																																			
8220-625	Remove coil winding rooms & dispose	02JUN08A	02SEP08	60	27,686.40	EM//TB etc = 480 Langella etc = 241																																																																			
8220-633	Equipment in MU machine shop-Electrical to RESA	02SEP08*	29SEP08		11,536.00	EM//TB etc = 80Langella etc = 40																																																																			
8220-641	Equipment in MU machine shop-Mechanical to RESA	02SEP08*	15SEP08		12,635.20	EM//TB etc = 160																																																																			
8220-653	Cryo pump skid- Mechanical to NCTCB	02JUL08*	28JUL08		3,790.56	EM//TB etc = 48																																																																			
8220-657	Cryostat-disposal	29JUL08	11AUG08		3,790.56	EM//TB etc = 48																																																																			
8220-661	Interlocked cryo room-leave in place	01JUL08*	01JUL08		0.00																																																																				
8220-665	Spherical bearings (Dahlgren) to NCTCB	02JUL08*	03JUL08		78.97	EM//TB etc = 1																																																																			
8220-669	Prototype castings to NCTC	13AUG08	14AUG08		631.76	EM//TB etc = 8																																																																			
8220-673	Prototype VV cross sections-Scrap	22SEP08*	23SEP08		157.94	EM//TB etc = 2																																																																			
8220-677	TF coil fabrication fixtures to NCTC-VPI fixture	13AUG08	14AUG08		315.88	EM//TB etc = 4																																																																			
8220-681	TF coil fabrication fixtures to NCTC-Mandrel	13AUG08	14AUG08		315.88	EM//TB etc = 4																																																																			
8220-685	TF coil fabrication fixtures to NCTC-Misc fixtur	13AUG08	14AUG08		315.88	EM//TB etc = 4																																																																			
Rej																																																																									
Job: 8101 - Project Management &Control-REJ																																																																									
810.900	Project Management Office PPPL FY08 (LOE)	01OCT07A	30SEP08	LOE	153,091.69	NEILSON etc =414hr ; STRYKOWSKY etc =540 B//CB etc =680hr ; 35etc =12\$K ; 41etc =03\$K ; DEPUTYPC etc =95hr ;																																																																			
810.9005A	Project Management Office PPPL fy08 etc	02JUN08A	30SEP08	LOE	94,580.00	DON REJ1 etc =126\$K ;																																																																			
810.901	Project Management Office PPPL FY09 (SA LOE)	01OCT08*	31MAR09	LOE	290,785.02	NEILSON etc =335hr ; Hampton etc =484hr ; 41etc =05\$K ; DON REJ1 etc =100\$K SIMMONS etc =61 STRYKOWSKY etc =417 35etc =17\$K ;																																																																			

Activity ID	Activity Description	Forecast Start	Forecast Finish	% cmplt	ETC	FY08					FY09										
						J	J	A	S	O	N	D	J	F	M	A	M	J	J	A	S
Job: 8221 -Documentation Closeout-HEITZENROEDER																					
Prepare Closeout report																					
8221-602	Draft table of contents out for review		14JUL08*		0.00	▼															
8221-604	DOE concurrence on table of contents		21JUL08*		0.00	▼															
8221-606	Final Table of contents issued		28JUL08*		0.00	▼															
8221-608	Chapter & Appendices writers assigned		28JUL08*		0.00	▼															
8221-610	Writer guidance prepared & communicated		28JUL08*		0.00	▼															
8221-612	Chapter outlines finalized		29AUG08*		0.00	▼															
8221-614	Chapter Draftes complete		30SEP08*		0.00	▼															
8221-616	Chapter Draft reviews complete		15OCT08*		0.00	▼															
8221-618	Chapters Complete		17NOV08*		0.00	▼															
8221-636	Executive summary complete		05DEC08*		0.00	▼															
8221-639	Draft Report complete		05JAN09*		0.00	▼															
8221-642	Report Reviews Complete		02FEB09*		0.00	▼															
8221-646	DOE Concurrence		02MAR09*		0.00	▼															
8221-649	Final Report Issued		31MAR09*		0.00	▼															
8221-655	Submit NEPA form		18JUL08*		0.00	▼															
Strykowski																					
Job: 8998 - Allocations-STRYKOWSKY																					
99.08	PPPL Allocations FY08	LOE	01OCT07A	29SEP08	LOE	106,859.48	■	54etc =88 ;													
99.09C	PPPL Allocations FY09	LOE	01OCT08*	31MAR09	LOE	59,465.00	■	54 etc =35													
Viola																					
Job: 1802 - FP Assy Oversight&Support-VIOLA																					
Oversight and Supervision																					
1802ORN02	ORNL Title III field period assy station 2/3		02JUN08A	30SEP08	LOE	10,436.58	■	mcginnis=140													
R1802-003	Metrology Engr Super FY08		01OCT07A	30SEP08	LOE	33,974.62	■	PRINISKI etc =293hr ;													
R1802-007	FPA Management FY08		01OCT07A	30SEP08	LOE	64,563.00	■	VIOLA etc =558hr ;													
R1802-009	PU Title III support		02JUN08A	30SEP08	LOE	47,244.29	■	SANDS etc =408hr ;													
R1802-010	Drexel co-op student support		02JUN08A	31JUL08	LOE	1,290.30	■	DREXEL etc =168 ;													
R1802-015	HP Coverage in the TFTR TC LOE FY08		01OCT07A	30SEP08	LOE	40,024.41	■	SH/TB etc =440hr ;													
R1802-016	HP Coverage in the TFTR TC LOE FY09		01OCT08*	23DEC08	LOE	36,276.45	■	SH/TB etc =629hr ;													
1802MISC	Misc materials,tools, GSA vehicle,rigging		01FEB08A	30SEP08	LOE	42,029.28	■	41etc =45\$K ;													
Station 3 procedures,JHA,ACC,Training,Prep																					
R1802-309	JHA completed		16JUL08	23JUL08		0.00	■														
R1802-315	Pre-job brief completed		24JUL08	31JUL08		0.00	■														
R1802-320	Update FPA cost estimate for FPA station 2&3		15SEP08	19SEP08		0.00	■														
Job: 1810 - Field Period AssyStation 1,2,3 VIOLA																					
General Assy Support																					
R1810-003	LOE Crane support, fixture setupfor FY08		01OCT07A	30SEP08	LOE	41,868.31	■	EM/TB etc =704hr ;													
R1810-025	Crane & Rigging inspections		01FEB08A	30SEP08	LOE	2,969.27	■	EM//TB etc =50hr ;													
R1810-007	LOE Field Supervision for FY08		01OCT07A	30SEP08	LOE	59,509.70	■	EDWARDS etc =587hr ;													
R1810-2001	Misc Hardware and hardware rework (1/2 fte loe)		01FEB08A	30SEP08	LOE	17,815.63	■	EM//TB etc =300hr ;													
S21-4.02	Perform routine metrology set-up and checks (loe		01FEB08A	30SEP08	LOE	45,942.88	■	ZMET etc =525 ;													
Setup																					
R1810-2034	Misc Tool and Hardware		02JUN08A	30SEP08	LOE	14,022.18	■	41etc =15\$K ;													
Pre-Measuring and fitup checks																					
Pre measurement of MCHP A2,B2,C2 flanges																					
2-2-2.99	Drill Stycast fill holes C2		01JUL08*	03JUL08		9,476.40	■	EM//TB etc =120hr ;													
Station 2 MC subassy A1B1C1																					
AB-C MC Assembly																					
2-1-7.37	Measure positions of all monuments		09JUL08*	09JUL08		2,234.30	■	EM//TB etc =00hr ; ZMET etc =19													

Activity ID	Activity Description	Forecast Start	Forecast Finish	% cmlpt	ETC	FY08					FY09									
						J	J	A	S	O	N	D	J	F	M	A	M	J	J	A
2-2-7.37	Measure positions of all monuments	21AUG08	21AUG08		1,861.92								EM//TB	etc =00hr	ZMET	etc =16				
2-2-7.38	Back office of above results & INSTALL wing supp	22AUG08	22AUG08		3,723.84								EM//TB	etc =00hr	ZMET	etc =32				
2-2-7.39	Fill all lose bushings with Stycast 2850FT	25AUG08	25AUG08		3,158.80								EM//TB	etc =40hr						
Stycast shim bags & final measurements																				
2-2-8.01	Fill all wing bladders & cure	26AUG08	27AUG08		3,158.80								EM//TB	etc =40hr						
2-2-8.02	Inject stycast in all shim spaces	28AUG08	29AUG08		3,158.80								EM//TB	etc =40hr						
2-2-10.0	Complete local service & interface details	02SEP08	29AUG08		0.00								EM//TB	etc =00hr						
2-2-11.01	Measure tooling balls on all coils.	02SEP08	03SEP08		3,723.84								EM//TB	etc =00hr	ZMET	etc =32				
2-2-11.02	Install or identify three primary fiducials	04SEP08	05SEP08		3,723.84								EM//TB	etc =00hr	ZMET	etc =32				
2-2-11.03	Scan "B" flange Type-C coil & interfacing base	08SEP08	10SEP08		5,585.76								EM//TB	etc =00hr	ZMET	etc =48				
2-2-11.04	Measure bolt length on all tension fasteners	11SEP08	11SEP08		1,579.40								EM//TB	etc =20hr						
2-2-11.05	Perform Electrical Megger test on each coil	12SEP08	15SEP08		3,158.80								EM//TB	etc =40hr						
2-2-11.06	Mark part for identification	16SEP08	15SEP08		0.00								EM//TB	etc =00hr						
2-2-11.07	Install lift support beams	16SEP08	17SEP08		6,317.60								EM//TB	etc =80hr						
2-2-11.08	Remove from stand & measure weight of completed	18SEP08	18SEP08		3,158.80								EM//TB	etc =40hr						
2-2-11.09	Move to holding area.	19SEP08	22SEP08		6,317.60								EM//TB	etc =80hr						
Station 3 Setup/Preparations/General																				
Misc Prep activities																				
R1810-3113	Procure wire rope slings & 6 17ton shackles	01JUL08	09JUL08		18,845.20								41etc =05\$k	EM//TB	etc =160hr					
Station 3-Assemble Mod Coils and VVSA-FP#1																				
Set-up and Prep																				
3-1-1.01	transfer CAD models	01JUL08*	10JUL08		13,033.44								ZMET	etc =112						
3-1-1.02	Install Station 3 site monuments	30JUN08A	06AUG08	10	11,527.16								41etc =02\$k	EM//TB	etc =60hr					
3-1-1.021	Design, fabricate and calibrate photogrammetry	02JUN08A	28JUL08	50	25,303.80								ZMET	etc =48						
3-1-1.07	Reconfirm Leica position	04AUG08	06AUG08		5,585.76								41etc =03\$k	EM//TB	etc =240hr					
													ZMET	etc =240						
													ZMET	etc =48						
Install Laser Screen																				
3-1-6.02	Place all laser screens	07AUG08	08AUG08		6,882.64								EM//TB	etc =40hr	ZMET	etc =32				
3-1-6.03	Turn each lasers on & measure each laser source	11AUG08	11AUG08		4,129.58								EM//TB	etc =24hr	ZMET	etc =19				
3-1-6.04	Print path on milar paper	12AUG08	11AUG08		0.00								EM//TB	etc =00hr						
3-1-6NEW	Dry-run MCHP thru laser screen path without VVSA	12AUG08	15AUG08		10,108.16								EM//TB	etc =128hr						
Install Vacuum Vessel																				
3-1-7.02	Install VV NBI port support stand.	18AUG08	19AUG08		3,790.56								EM//TB	etc =48hr						
3-1-7.03	Install VVSA to base support and make connection	20AUG08	20AUG08		1,895.28								EM//TB	etc =24hr						
3-1-7.04	take tooling ball readings and secure VVSA	21AUG08	22AUG08		3,790.56								EM//TB	etc =48hr						
3-1-7.05	Scan VV surface and compare data	25AUG08	27AUG08		6,702.91								ZMET	etc =58	EM//TB	etc =00h				
Trial fit MCHP over VV																				
3-1-8.01	Install any bumper protection components on the	28AUG08	28AUG08		947.64								EM//TB	etc =12hr						
3-1-8.03	Install MCHP lift fixture, disengage leveler	29AUG08	02SEP08		3,790.56								EM//TB	etc =48hr						
3-1-8.05	Move right MCHP over the VV	03SEP08	05SEP08		18,074.59								EM//TB	etc =144hr	ZMET	etc =58				
3-1-8.05M	MCHP test fit over VVSA Complete		05SEP08		0.00															
3-1-6.05	Disengage the right MCHP & position on floor	08SEP08	08SEP08		1,895.28								EM//TB	etc =24hr						

Windows FTP Client for Drag and Drop

There is a free FTP client utility that will permit PC users to simply drag and drop files from their computer to the NCSX archiving FTP site:

<ftp://ftp.pppl.gov/priv/bob-simmons+sig03>

The free site is called **FileZilla** and the URL is:

http://sourceforge.net/project/showfiles.php?group_id=21558&package_id=15149

Once you select the above URL, the following window will come up => Select "FileZilla_3.0.11.1_win32-setu-exe" option and download:

SourceForge.net: Files Page 1 of 1

SourceForge.net

- Jump to main content
- Jump to project navigation
- Jump to downloads for FileZilla

FileZilla Search Files Files Search Advanced

File Releases

You have selected to download FileZilla Client

Below is a list of releases and files contained in this package.
Before downloading, you may want to read the release notes.

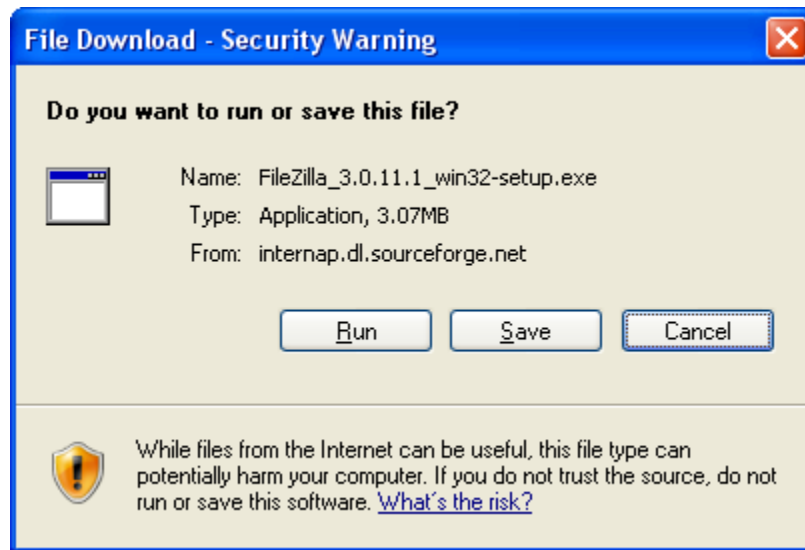
Finalist - VOTE NOW!
SOURCEFORGE.NET® 2008
COMMUNITY CHOICE AWARDS

Package	Release (date)	Filename	Size (bytes)	Downloads	Architecture	Type
FileZilla Client						
Latest	3.0.11.1	(2008-07-05 15:06)				
		FileZilla_3.0.11.1_i586-linux-gnu.tar.bz2	3625432	0	i386	bz2
		FileZilla_3.0.11.1_i686-apple-darwin9.app.tar.bz2	3622532	0	i386	bz2
		FileZilla_3.0.11.1.md5	522	0	Platform-Independent	text
		FileZilla_3.0.11.1_powerpc-apple-darwin9.app.tar.bz2	3661293	0	PPC	bz2
		FileZilla_3.0.11.1_src.tar.bz2	2172349	0	Platform-Independent	Source, bz2
		FileZilla_3.0.11.1_win32-setup.exe	3228057	0	i386	.exe (32-bit Windows)
		FileZilla_3.0.11.1_win32.zip	4746428	0	i386	zip
		FileZilla_3.0.11.1_x86_64-linux-gnu.tar.bz2	3881585	0	AMD64	bz2
	3.0.11	(2008-06-15 15:17)				
	3.0.10	(2008-05-20 18:05)				
	3.0.9.3	(2008-05-06 09:17)				
	3.0.9.2	(2008-04-18 15:02)				
	3.0.9.1	(2008-04-07 17:01)				
	3.0.8.1	(2008-03-17 21:15)				
	3.0.8	(2008-03-14 00:03)				
	3.0.7.1	(2008-02-19 21:41)				
	3.0.7	(2008-02-14 00:24)				
	3.0.6	(2008-01-30 14:17)				
	3.0.5.2	(2008-01-12 13:43)				
	3.0.5.1	(2008-01-11 15:10)				
	3.0.5	(2008-01-10 13:34)				
	3.0.4	(2007-11-26 10:23)				
	3.0.3	(2007-11-07 08:25)				
	3.0.2.1	(2007-10-17 19:25)				
	3.0.2	(2007-10-17 14:19)				
	3.0.1	(2007-09-19 19:22)				
	3.0.0	(2007-09-08 19:14)				
Totals:	20	153	665033257	12974618		

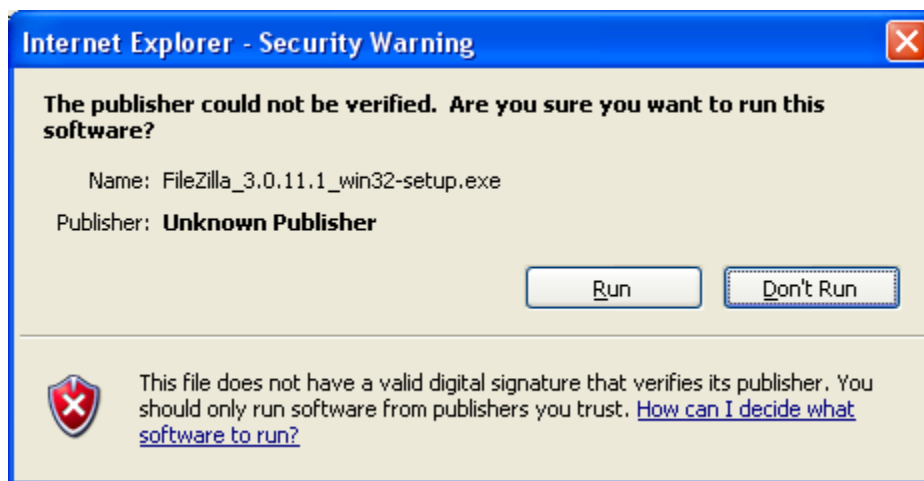
Select this option.

You will then see this window:

Windows FTP Client for Drag and Drop

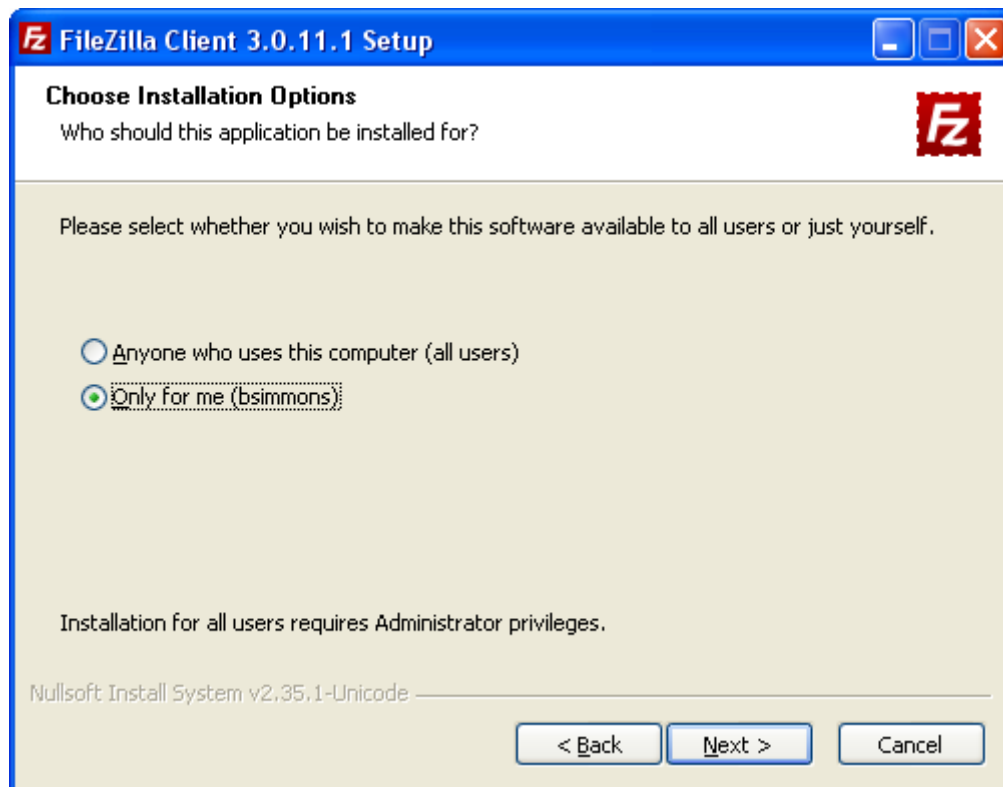
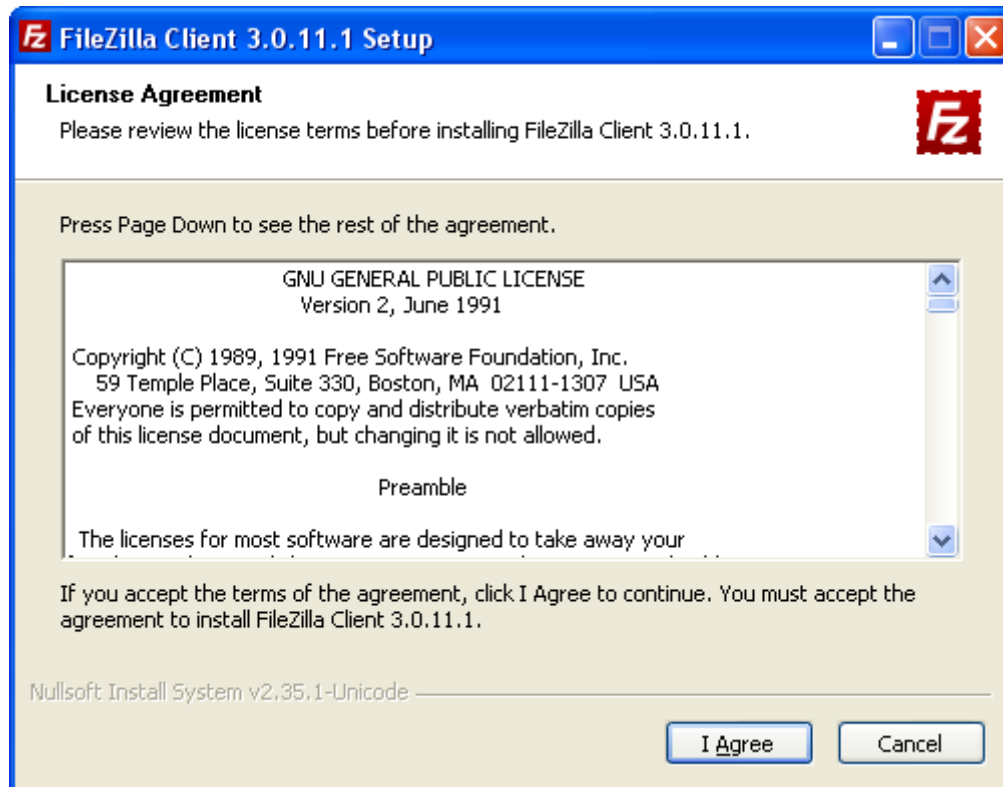


Select Run to install this program and you will then get this screen:

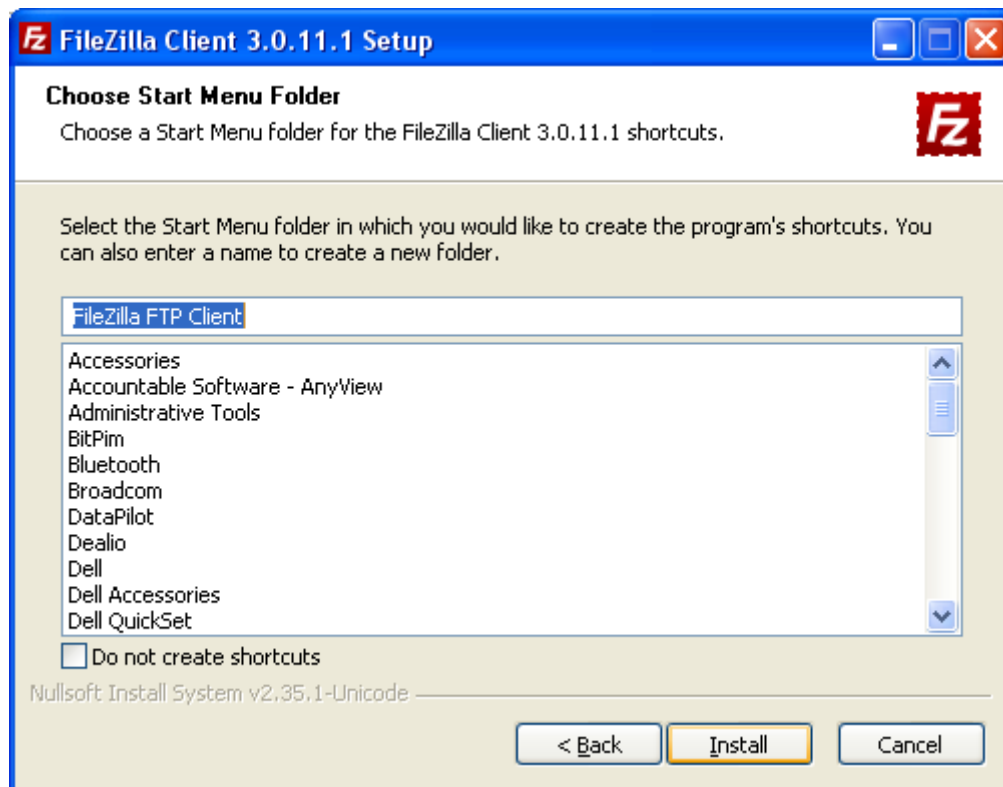
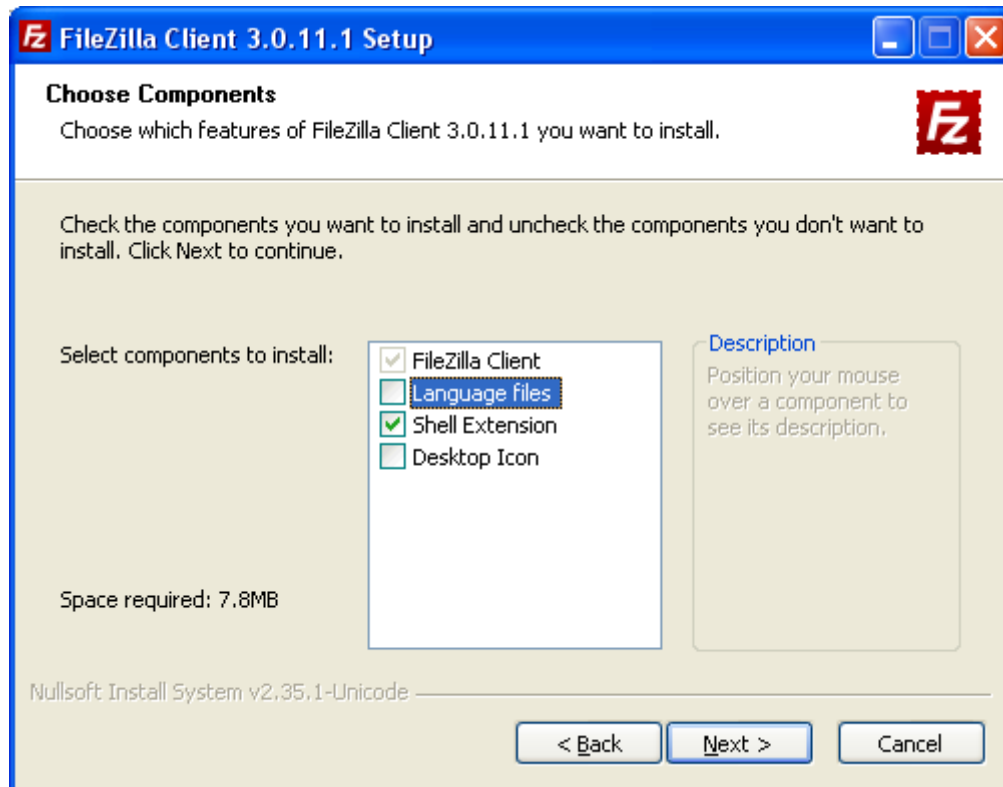


Select Run, agree to terms and conditions, and set up only for you:

Windows FTP Client for Drag and Drop

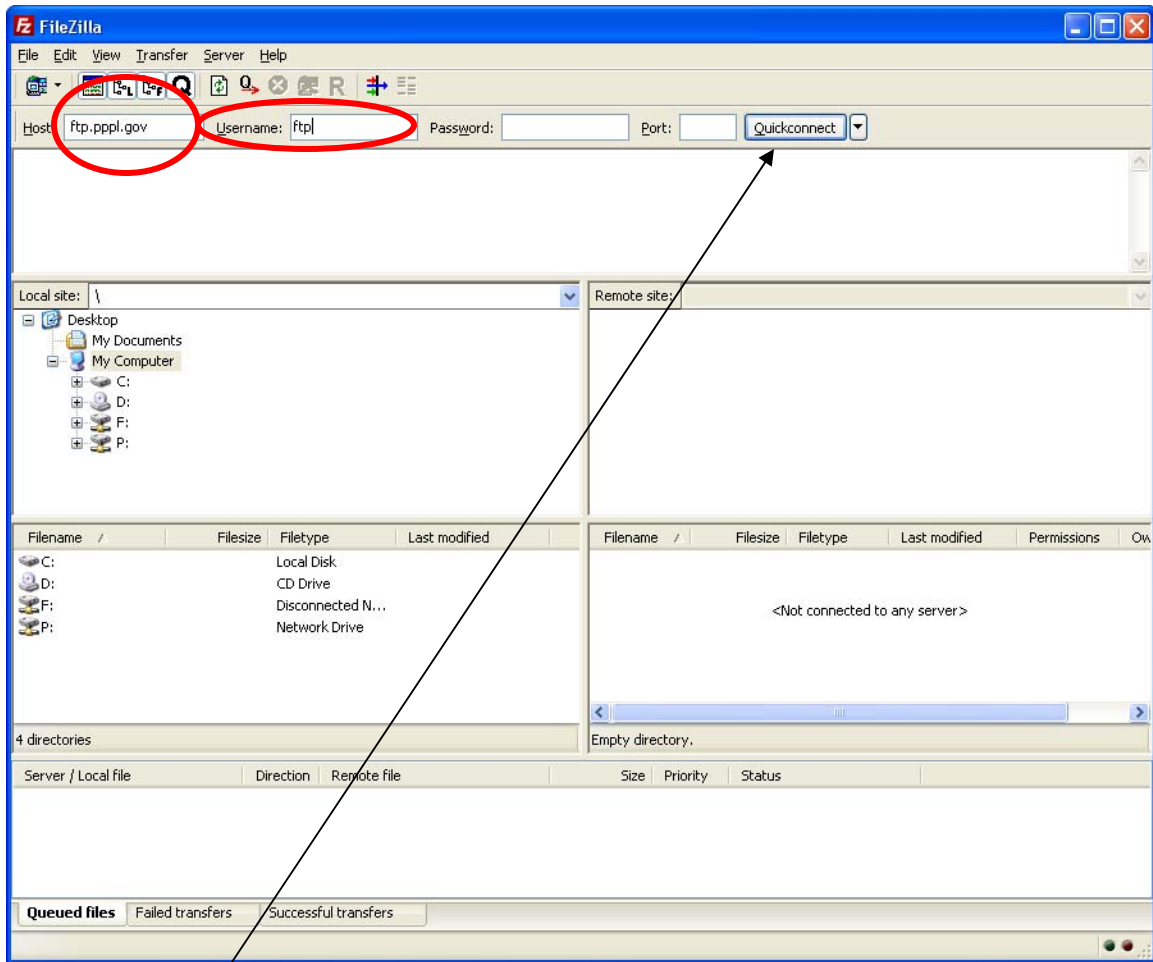


Windows FTP Client for Drag and Drop



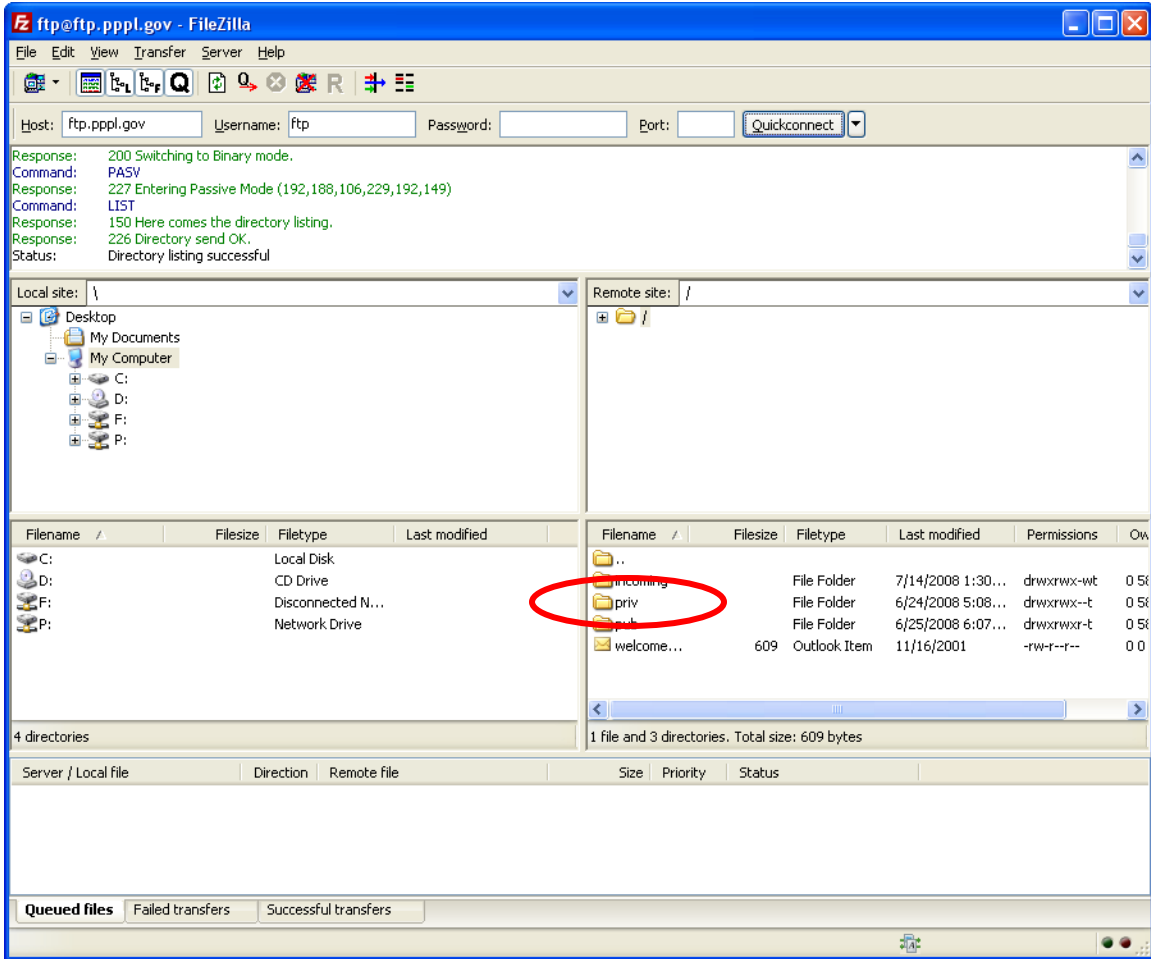
Once you have done these steps, FileZilla will be installed. Open the program. Host will be ftp.pppl.gov and the username will be ftp

Windows FTP Client for Drag and Drop



Select "Quickconnect"

Windows FTP Client for Drag and Drop



Select “priv” and then type in the remote site after priv => /bob-simmons+sig03. Once you do this, the following screen will appear. Note that the left side of the window is a mirror of your computer. Once you set up the correct NCSX archiving site URL as shown below, the individual folders will appear to enable you to drag and drop.

Windows FTP Client for Drag and Drop

