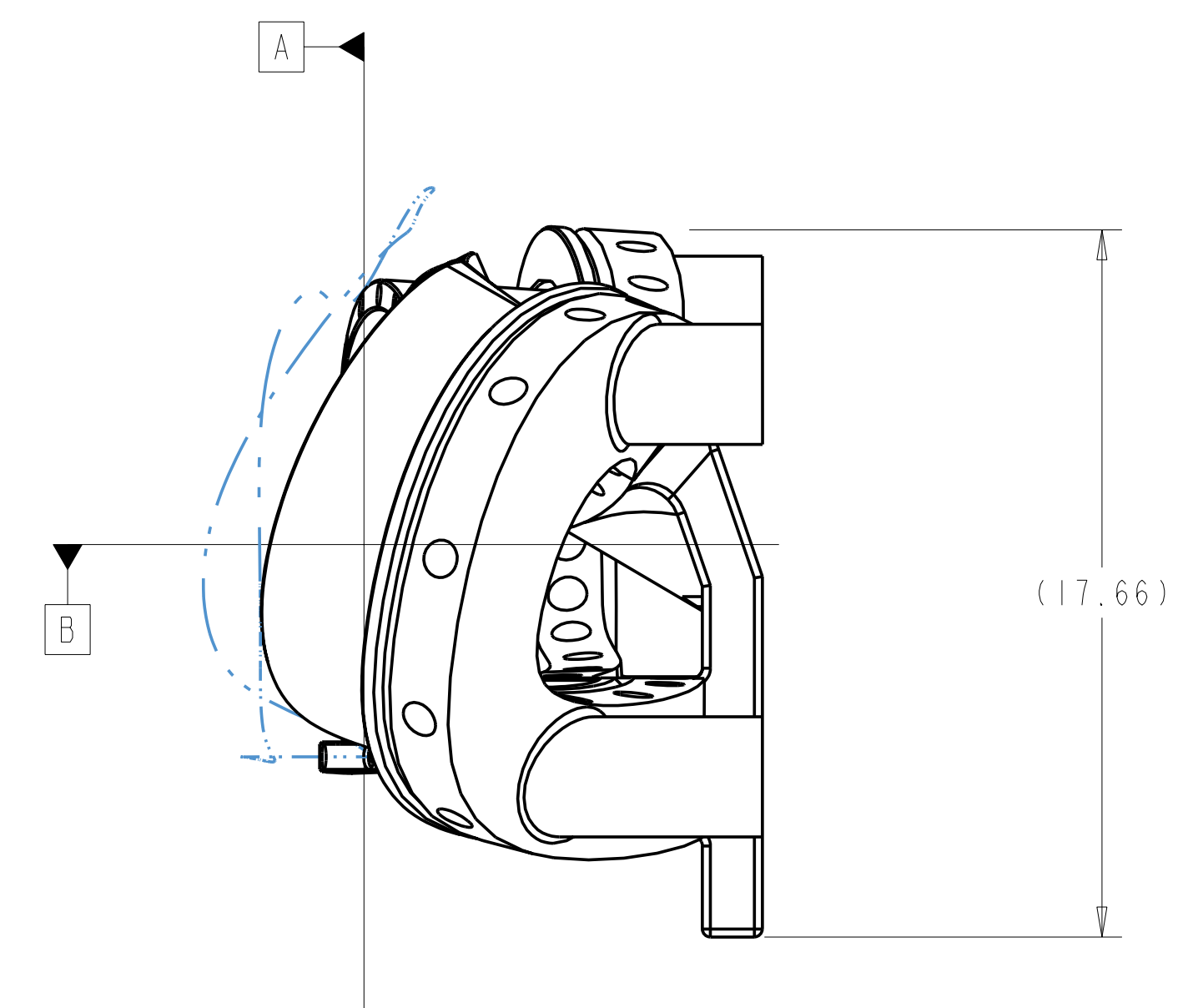
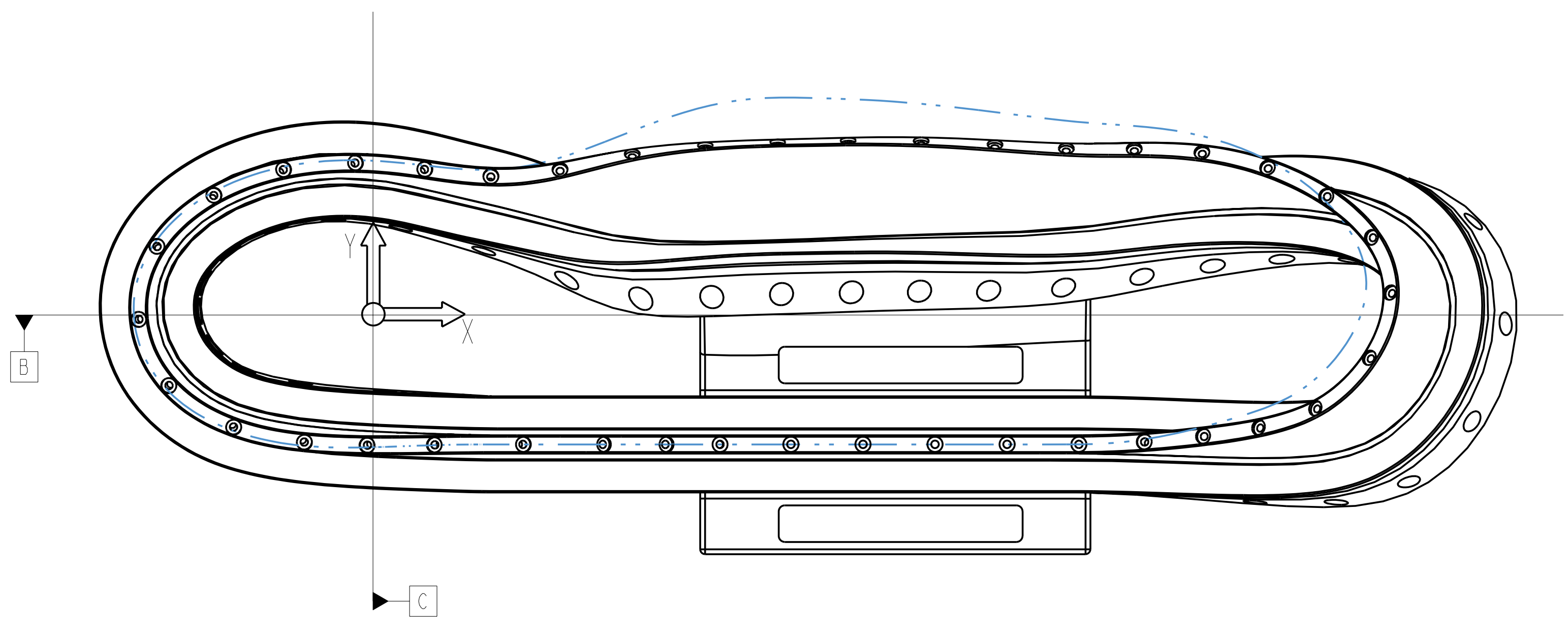
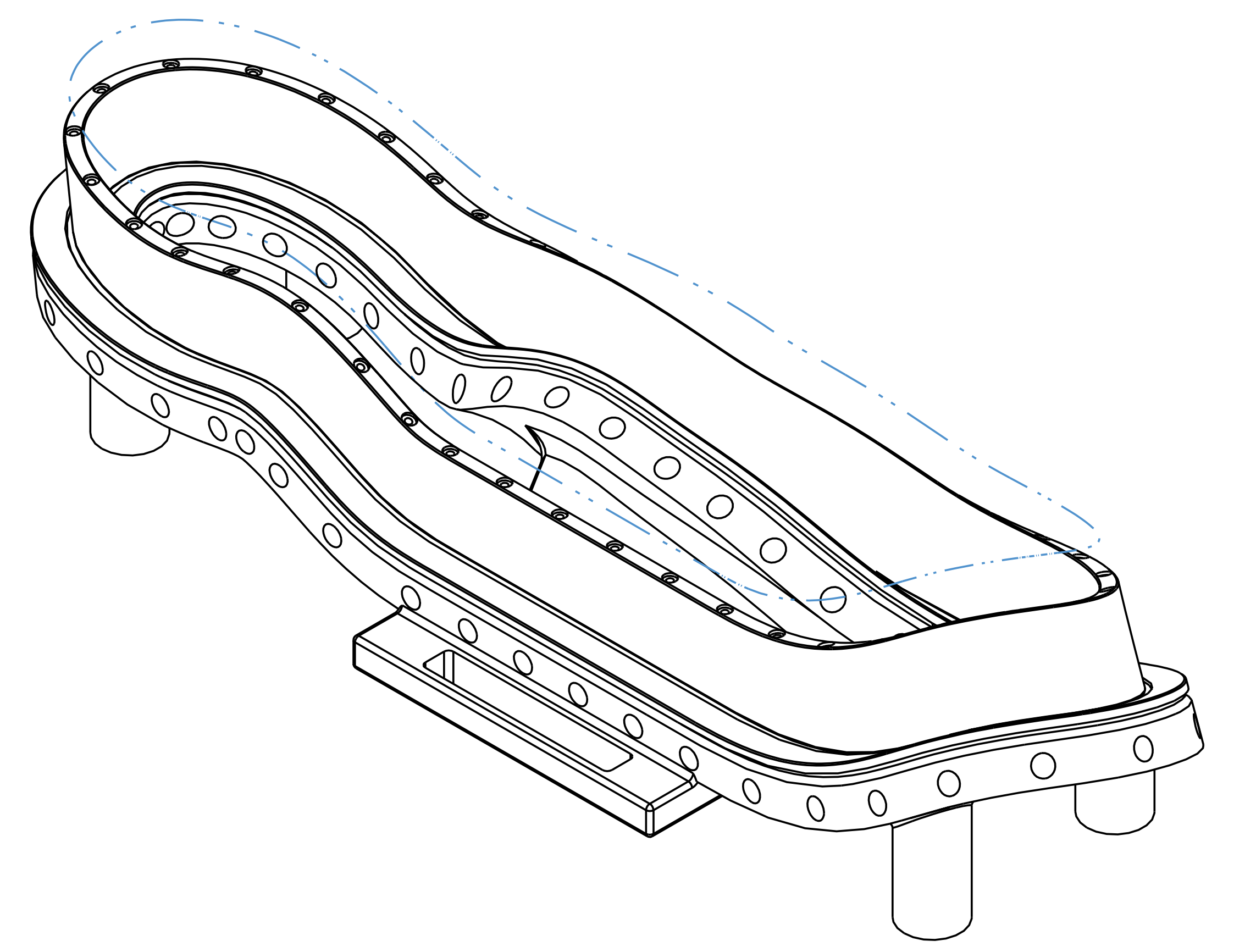
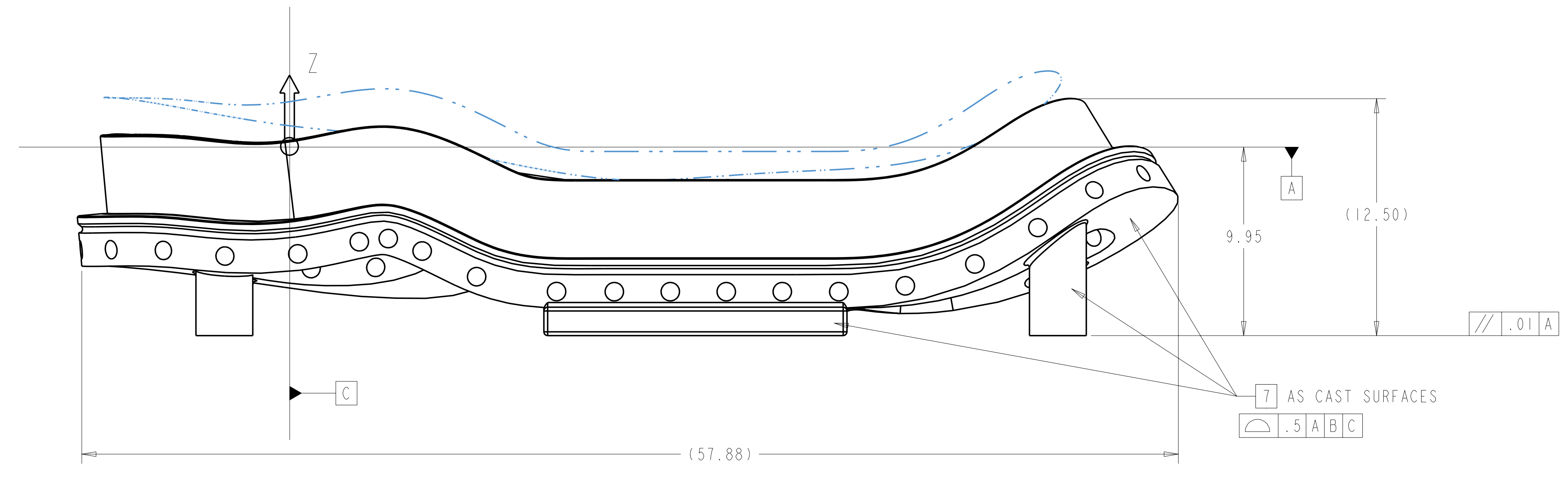


- NOTES:
1. INTERPRET DIMENSIONS AND TOLERANCES PER ANSI Y14.5M
 2. DIMENSIONS ARE IN INCHES
 3. DIMENSIONS APPLY AT ROOM TEMPERATURE. OPERATING TEMP 80 K.
 4. GEOMETRY IS DEFINED IN PRO ENGINEER CAD MODELS/FILES SE140-081.PRT.
 5. DRAWING AND MODELS COMBINED DEFINE FINISHED MACHINED PART.
 6. MACHINE FINISHED SURFACES TO CAD DATA, PROFILE WITHIN 0.020" UNLESS OTHERWISE SPECIFIED. PROFILE TOLERANCE IS BILATERAL, ie. 0.010" EITHER SIDE OF THE REFERENCE SURFACE.
 7. AS-CAST SURFACES SHOWN IN NOMINAL MATERIAL CONDITION, THICKNESS TOLERANCE +/- 0.25. SURFACE PROFILE MUST BE WITHIN 0.5 INCHES OF CAD DATA, EXCEPT IN REGIONS OF INTERSECTING SURFACES WHERE FILLETS ARE EXPECTED.
 8. SEE SPECIFICATION, NCSX-CSPEC 141-02-00 FOR ADDITIONAL REQUIREMENTS.
 9. SEE SPECIFICATION NCSX-CSPEC 141-02-00 SECTION 3.2.1.1 FOR MATERIAL REQUIREMENTS.



DATUM A = PLANE THRU "XY"
 DATUM B = PLANE THRU "XZ"
 DATUM C = PLANE THRU "YZ"



ISOMETRIC VIEW

APPROXIMATE WEIGHT = 556 LBS

AR	SE140-081	WINDING FORM	SEE NOTE 9	SEE NOTE 8	-1
CAGE CODE	PART OR IDENTIFYING NO	NOMENCLATURE OR DESCRIPTION	MATERIAL	SPECIFICATION	FIND NO
SE140-080	NEXT ASSEMBLY	PARTS LIST			

NO REPRESENTATION OR WARRANTY, EXPRESSED OR IMPLIED, IS MADE AS TO THE ACCURACY, COMPLETENESS OR USEFULNESS OF THE INFORMATION OR STATEMENTS CONTAINED IN THESE DRAWINGS, OR THAT THE USE OR DISCLOSURE OF ANY INFORMATION, APPARATUS, METHOD OR PROCESS DISCLOSED IN THESE DRAWINGS MAY NOT INFRINGE PRIVATE RIGHTS OF OTHERS. NO LIABILITY IS ASSUMED WITH RESPECT TO THE USE OF, OR FOR DAMAGES RESULTING FROM THE USE OF, ANY INFORMATION, APPARATUS, METHOD OR PROCESS DISCLOSED IN THESE DRAWINGS. DRAWINGS MADE AVAILABLE FOR INFORMATION TO BIDDER ARE NOT TO BE USED FOR OTHER PURPOSES, AND ARE TO BE RETURNED UPON REQUEST OF THE FORWARDING CONTRACTOR.

P THIS DRAWING PRODUCED ON PRO-ENGINEER

REV	DESCRIPTION	BY	DATE	CHK	DEPT	DATE	PE	REG	DATE	ORNL	DOE	DATE

SCALE .25 UNO

DES: PAUL FOGARTY 10-14-03
 DRW: GARY LOVETT 10-14-03

UT-BATTELLE
 U.S. GOVERNMENT CONTRACT DE-AC05-00OR22725
 UT-BATTELLE, LLC, Oak Ridge, Tennessee

NATIONAL COMPACT STELLARATOR EXPERIMENT

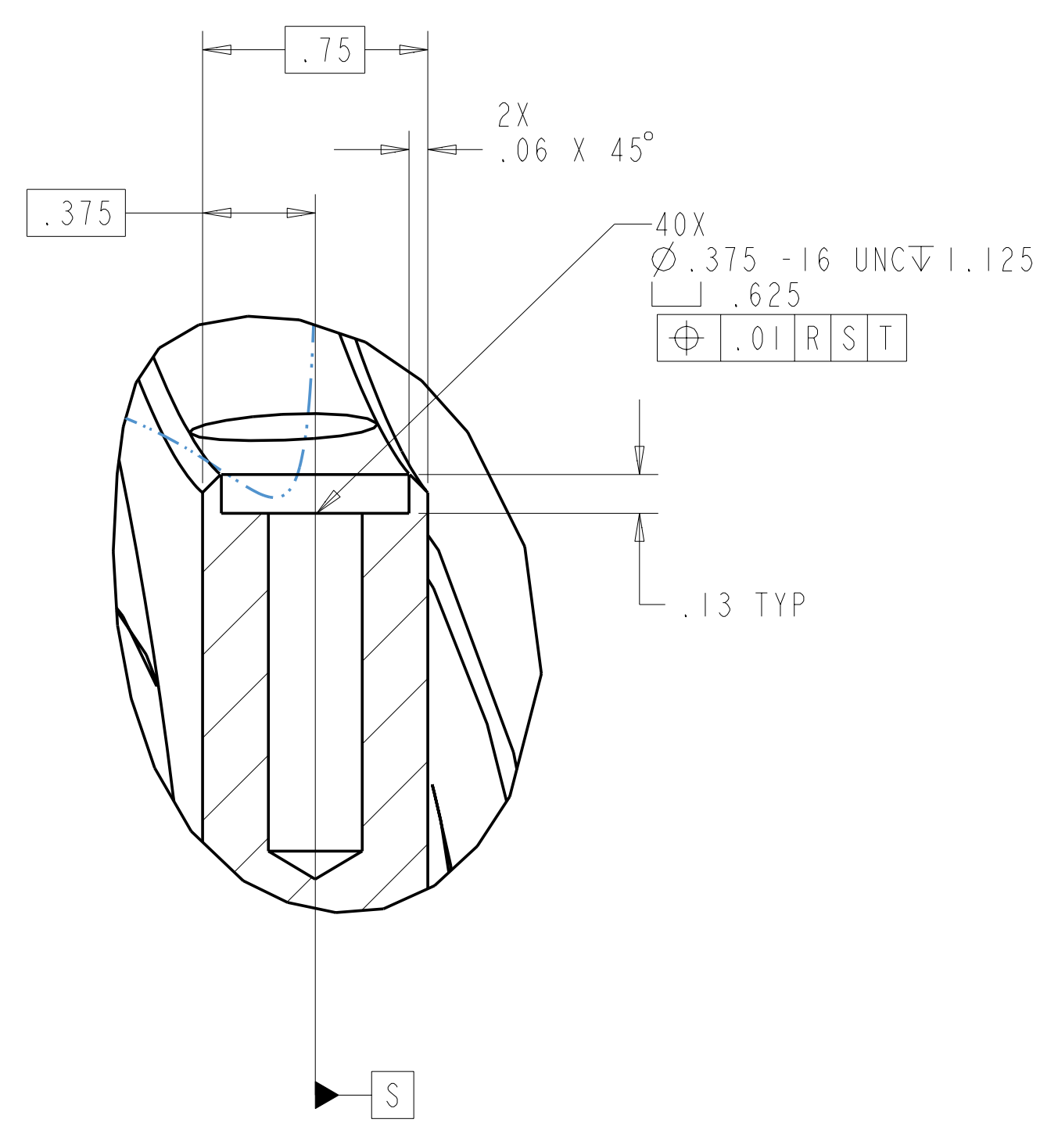
TWISTED RACETRACK WINDING FORM

VERSION NO.	PLANT	BLDG	FL	SHT OF	TYPE	CLASS
17	X-10	5700	3	1	3	S U

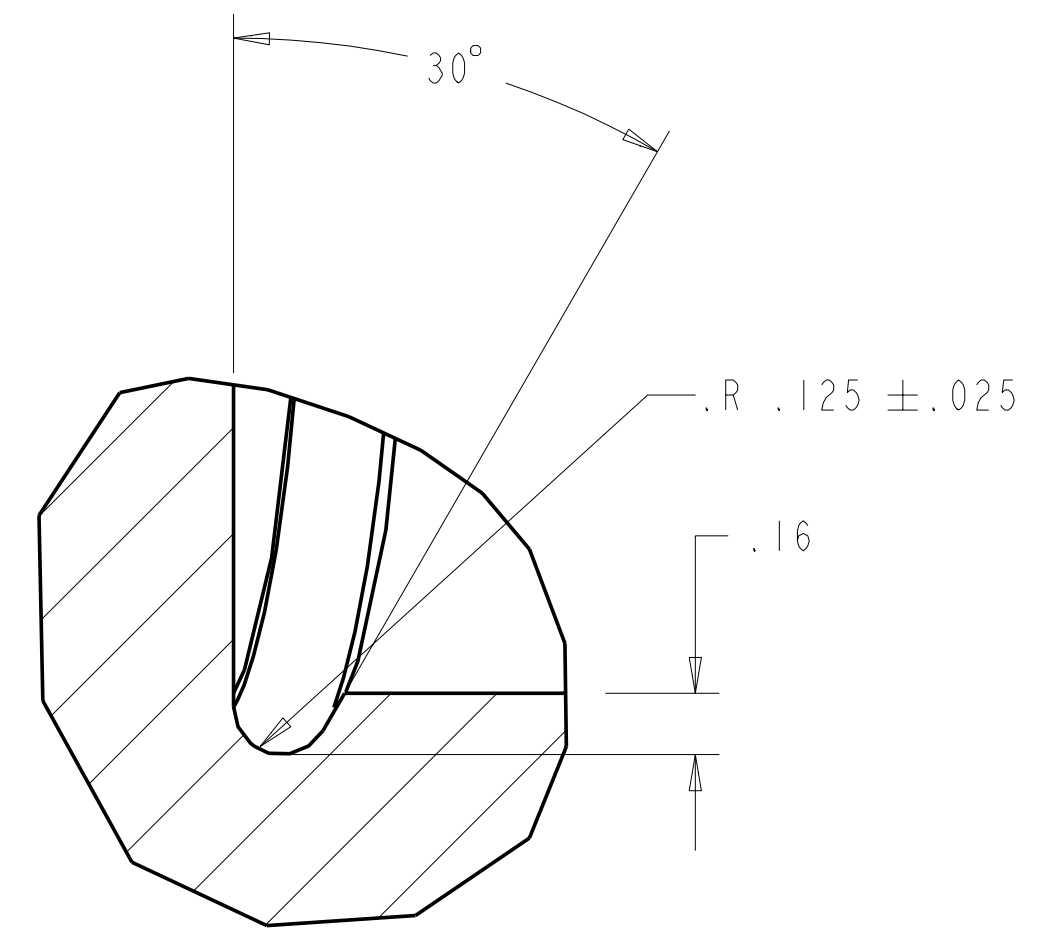
RELEASE LEVEL: WIP

SE140-081

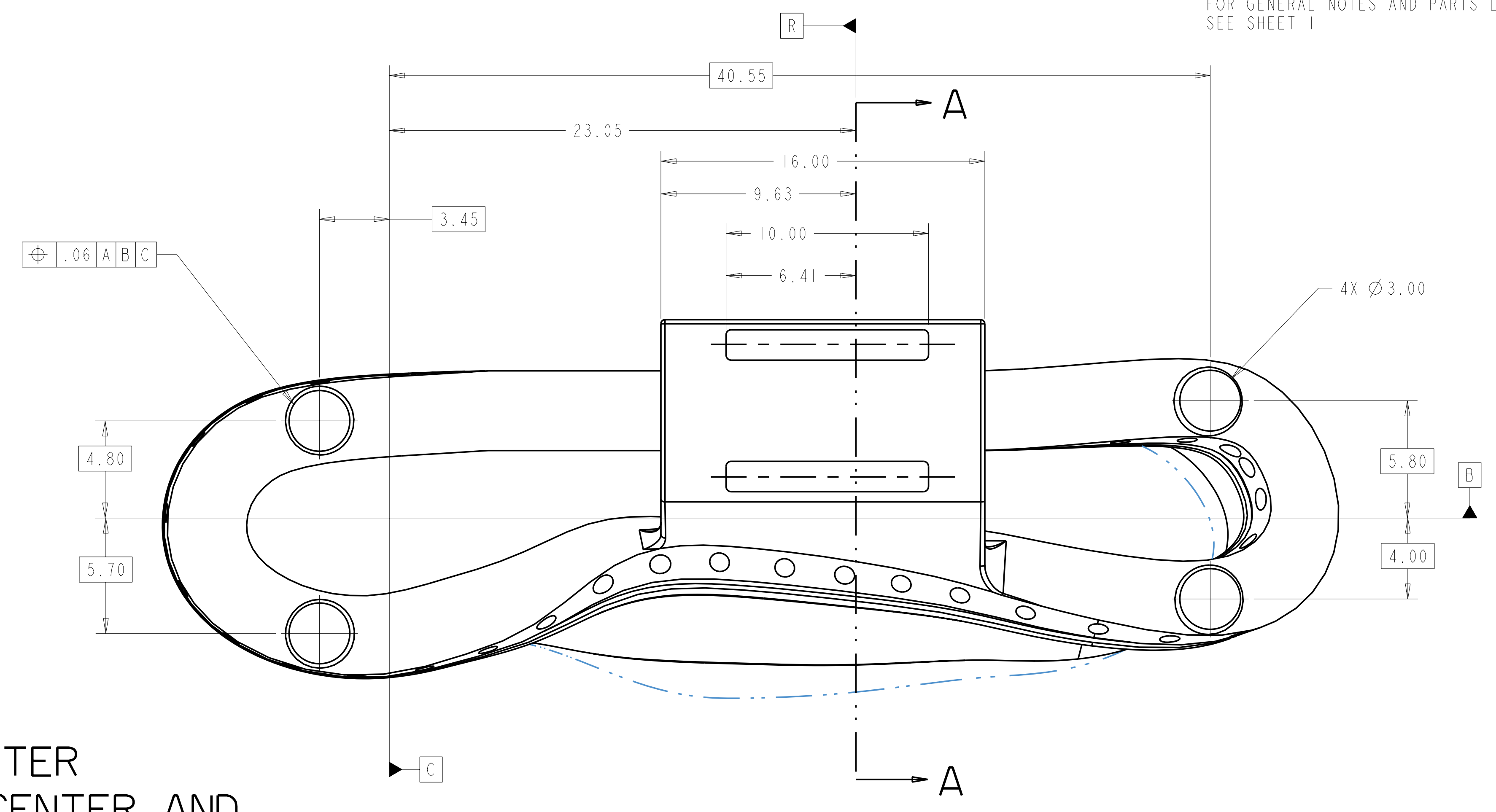
REV 0



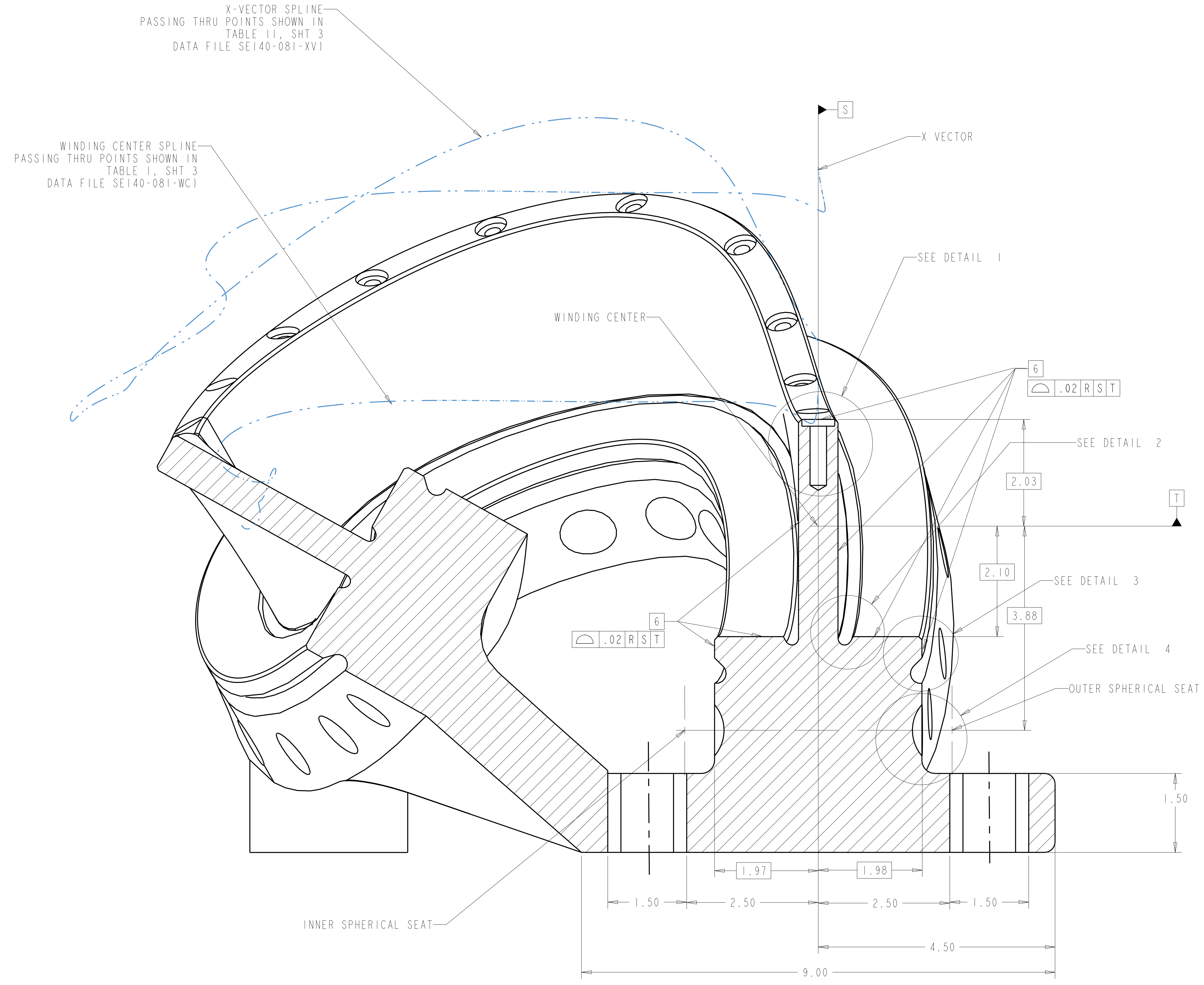
DETAIL 1
SCALE 2.00



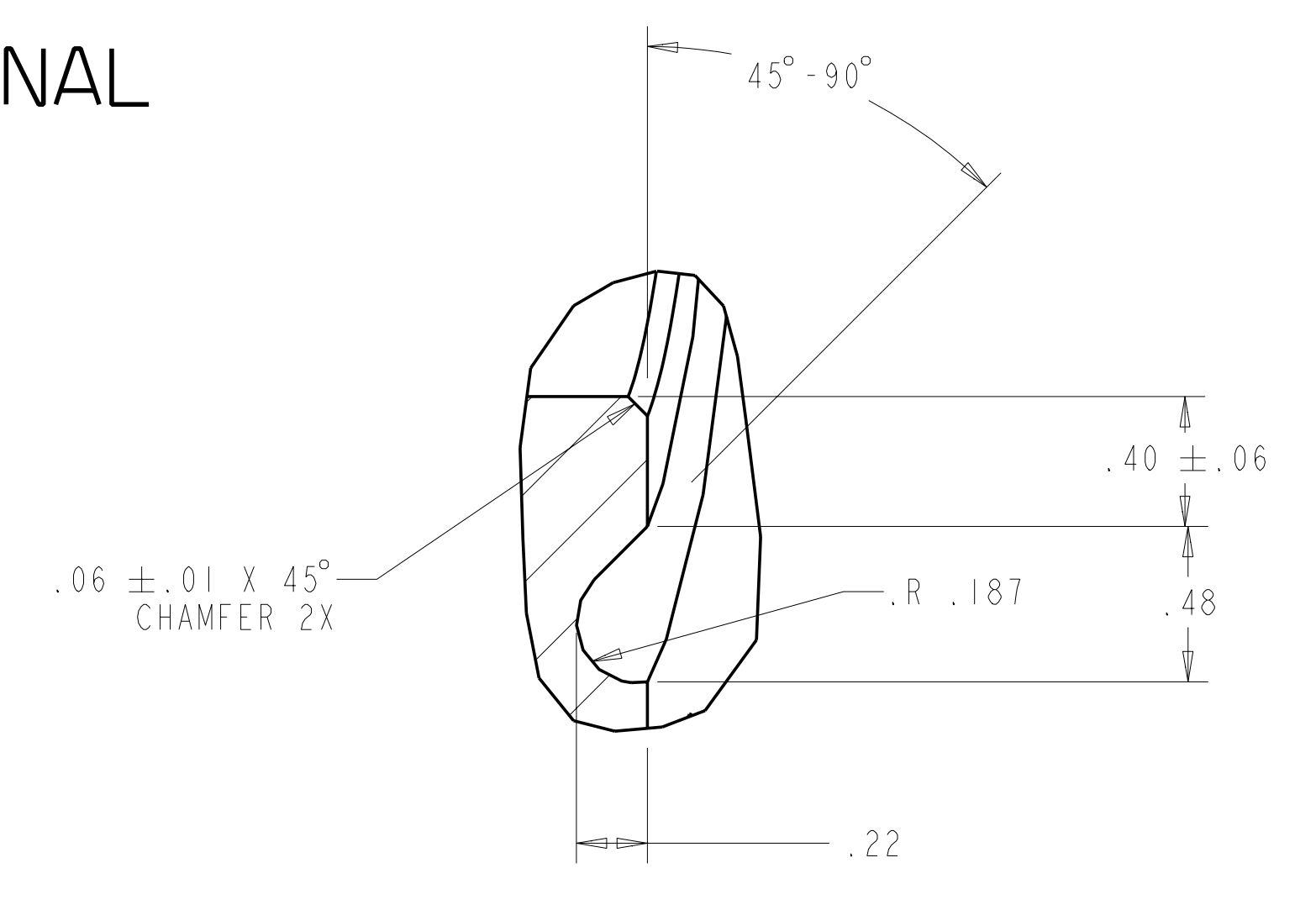
DETAIL 2
SCALE 2.00



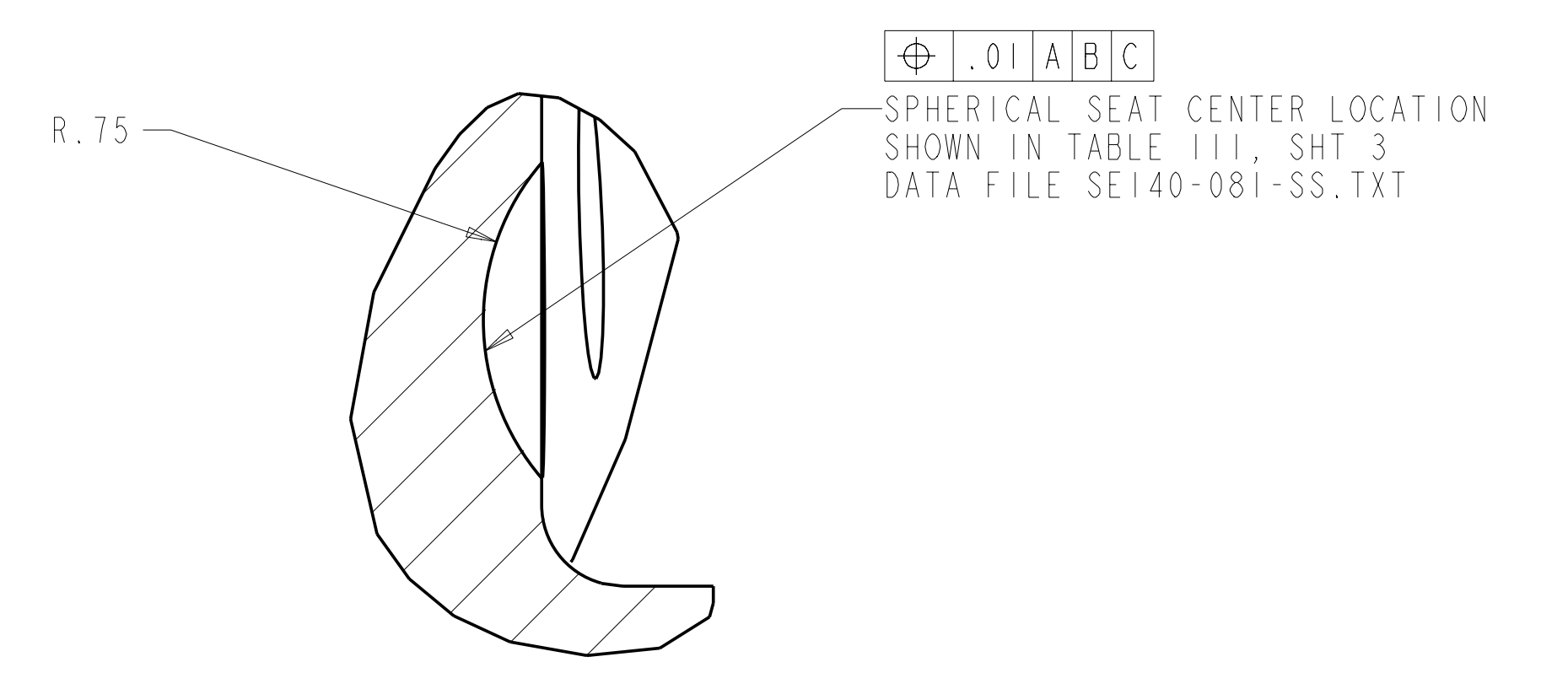
DATUM R = PLANE NORMAL TO WINDING CENTER
 DATUM S = PLANE PASSING THRU WINDING CENTER AND X-VECTOR AT DATUM R
 DATUM T = PLANE PASSING THRU WINDING CENTER ORTHOGONAL TO DATUM S



SECTION A-A
SCALE 1.00
(NORMAL TO THE WINDING CENTER AT DATUM R)



DETAIL 3
SCALE 2.00



DETAIL 4
SCALE 2.00

Oak Ridge National Laboratory managed for the DEPARTMENT OF ENERGY under U.S. GOVERNMENT contract DE-AC05-00OR22725 UT-BATTELLE, LLC, Oak Ridge, Tennessee						
NATIONAL COMPACT STELLARATOR EXPERIMENT						
TWISTED RACETRACK WINDING FORM						
VERSION NO.	PLANT	BLDG	FL	SHT OF	TYPE	CLASS
17	X-10	5700	3	2 3	S	U
RELEASE LEVEL	SEI40-081					REV
WIP						0

SEI40-081

