

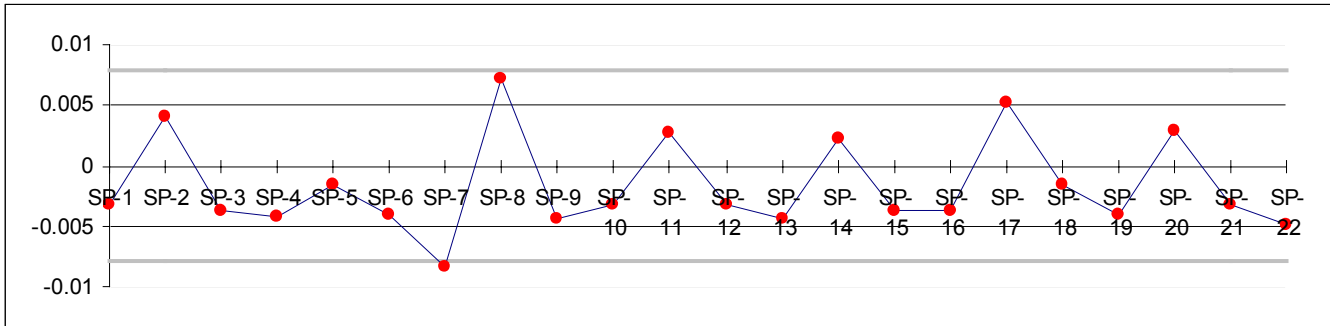
Description	Oval Tee Mold	Customer	PPPL
Part No.	se1405-006	Customer contact	James Chrzanowski
Drawing Number	JP20031043	Customer phone No.	
Thickness		Customer fax No.	

**Geometric Group 1 (Set Origin)**

<b>Slot 1</b>							
		Lo. Tol.	Hi. Tol.	Nominal	Measured	Dev/Mean	Error
<b>Centre</b>	X	0.000	0.000	-6.921	0.000	6.921	6.921
	Y	0.000	0.000	-22.157	0.000	22.157	22.157
	Z	0.000	0.000	-3.364	0.000	3.364	3.364
<b>Length</b>		-0.100	0.100	42.607	42.607	0.000	
<b>Width</b>		-0.100	0.100	13.629	13.629	0.000	
<b>Radius</b>		-0.100	0.100	6.815	6.815	0.000	

**Outer Pockets**

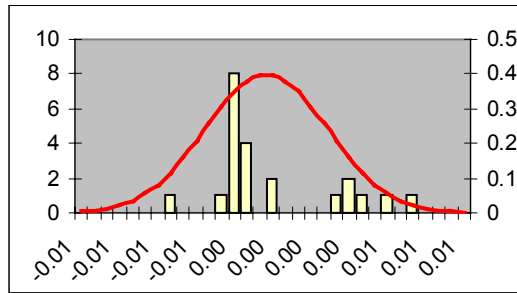
<b>Surface Points</b>										
Name	Offset	Lo. Tol.	Hi. Tol.	X	Y	Z	dX	dY	dZ	DL
SP-1	0.000	-0.008	0.008	22.099	5.485	0.792	0.002	-0.002	0.000	-0.003
SP-2	0.000	-0.008	0.008	21.680	6.013	0.500	0.000	0.000	0.004	0.004
SP-3	0.000	-0.008	0.008	19.951	7.579	0.980	-0.003	0.003	0.000	-0.004
SP-4	0.000	-0.008	0.008	20.899	6.384	1.097	-0.003	-0.003	0.000	-0.004
SP-5	0.000	-0.008	0.008	7.159	9.283	0.500	0.000	0.000	-0.002	-0.002
SP-6	0.000	-0.008	0.008	5.500	9.309	1.050	-0.004	0.000	0.000	-0.004
SP-7	0.000	-0.008	0.008	8.500	9.229	1.215	0.008	0.000	0.000	-0.008
SP-8	0.000	-0.008	0.008	21.123	-6.600	0.500	0.000	0.000	0.007	0.007
SP-9	0.000	-0.008	0.008	22.061	-5.447	1.053	0.003	0.003	0.000	-0.004
SP-10	0.000	-0.008	0.008	19.981	-7.609	0.949	-0.002	-0.002	0.000	-0.003
SP-11	0.000	-0.008	0.008	6.882	-9.375	0.500	0.000	0.000	0.003	0.003
SP-12	0.000	-0.008	0.008	8.500	-9.369	0.883	0.003	0.000	0.000	-0.003
SP-13	0.000	-0.008	0.008	5.500	-9.394	1.138	-0.004	0.000	0.000	-0.004
SP-14	0.000	-0.008	0.008	-7.087	-9.357	0.500	0.000	0.000	0.002	0.002
SP-15	0.000	-0.008	0.008	-5.500	-9.341	0.976	0.004	0.000	0.000	-0.004
SP-16	0.000	-0.008	0.008	-8.500	-9.387	0.892	-0.004	0.000	0.000	-0.004
SP-17	0.000	-0.008	0.008	-21.046	-6.616	0.500	0.000	0.000	0.005	0.005
SP-18	0.000	-0.008	0.008	-22.137	-5.523	0.963	-0.001	0.001	0.000	-0.002
SP-19	0.000	-0.008	0.008	-20.012	-7.641	0.816	0.003	-0.003	0.000	-0.004
SP-20	0.000	-0.008	0.008	-20.956	6.602	0.500	0.000	0.000	0.003	0.003
SP-21	0.000	-0.008	0.008	-19.961	7.590	0.947	0.002	0.002	0.000	-0.003
SP-22	0.000	-0.008	0.008	-22.067	5.453	0.996	-0.003	-0.003	0.000	-0.005



<b>Number of points</b>	22
<b>Out of Tolerance points</b>	1
<b>Performance</b>	95%

<b>Mean</b>	-0.002
<b>Std. deviation</b>	0.004

<b>Max. Value</b>	0.007
<b>Min. Value</b>	-0.008



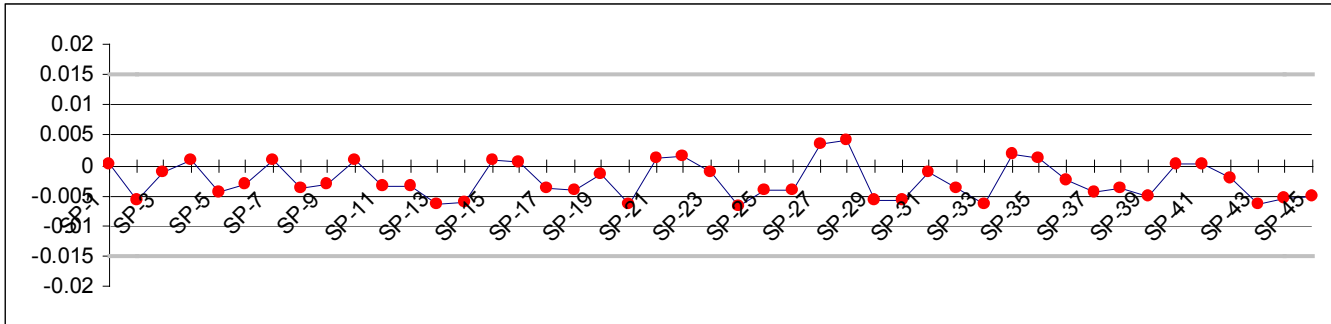
**Inside pockets**

**Surface Points**

Name	Offset	Lo. Tol.	Hi. Tol.	X	Y	Z	dX	dY	dZ	DL
SP-1	0.000	-0.015	0.015	-7.338	-5.162	0.500	0.000	0.000	0.000	0.000
SP-2	0.000	-0.015	0.015	-8.500	-5.129	0.916	-0.006	0.000	0.000	-0.006
SP-3	0.000	-0.015	0.015	-5.500	-5.032	1.054	0.001	0.000	0.000	-0.001
SP-4	0.000	-0.015	0.015	-17.976	-3.539	0.500	0.000	0.000	0.001	0.001
SP-5	0.000	-0.015	0.015	-19.029	-2.415	0.876	-0.003	0.003	0.000	-0.005
SP-6	0.000	-0.015	0.015	-16.916	-4.545	0.956	0.002	-0.002	0.000	-0.003
SP-7	0.000	-0.015	0.015	-18.155	3.400	0.500	0.000	0.000	0.001	0.001
SP-8	0.000	-0.015	0.015	-18.987	2.373	0.991	-0.003	-0.003	0.000	-0.004
SP-9	0.000	-0.015	0.015	-16.864	4.493	0.782	0.002	0.002	0.000	-0.003
SP-10	0.000	-0.015	0.015	-17.281	4.214	0.500	0.000	0.000	0.001	0.001
SP-11	0.000	-0.015	0.015	-18.321	3.569	0.989	-0.003	0.003	0.000	-0.004
SP-12	0.000	-0.015	0.015	-17.712	4.177	1.038	-0.002	0.002	0.000	-0.003
SP-13	0.000	-0.015	0.015	-18.507	-3.383	1.205	-0.005	-0.005	0.000	-0.006
SP-14	0.000	-0.015	0.015	-17.854	-4.036	1.245	-0.004	-0.004	0.000	-0.006
SP-15	0.000	-0.015	0.015	-8.130	5.039	0.500	0.000	0.000	0.001	0.001
SP-16	0.000	-0.015	0.015	-6.466	5.017	0.500	0.000	0.000	0.001	0.001
SP-17	0.000	-0.015	0.015	-6.251	5.331	0.994	0.000	0.004	0.000	-0.004
SP-18	0.000	-0.015	0.015	-7.869	5.331	0.975	0.000	0.004	0.000	-0.004
SP-19	0.000	-0.015	0.015	-8.500	5.017	0.966	-0.002	0.000	0.000	-0.002
SP-20	0.000	-0.015	0.015	-5.500	5.061	1.066	0.006	0.000	0.000	-0.006
SP-21	0.000	-0.015	0.015	6.151	5.025	0.500	0.000	0.000	0.001	0.001
SP-22	0.000	-0.015	0.015	7.522	5.011	0.500	0.000	0.000	0.002	0.002
SP-23	0.000	-0.015	0.015	5.500	4.920	1.033	-0.001	0.000	0.000	-0.001
SP-24	0.000	-0.015	0.015	8.500	5.163	1.038	0.007	0.000	0.000	-0.007
SP-25	0.000	-0.015	0.015	6.996	5.331	1.031	0.000	0.004	0.000	-0.004
SP-26	0.000	-0.015	0.015	6.354	5.331	1.087	0.000	0.004	0.000	-0.004
SP-27	0.000	-0.015	0.015	17.041	4.352	0.500	0.000	0.000	0.003	0.003
SP-28	0.000	-0.015	0.015	18.546	3.072	0.500	0.000	0.000	0.004	0.004

**Surface Points**

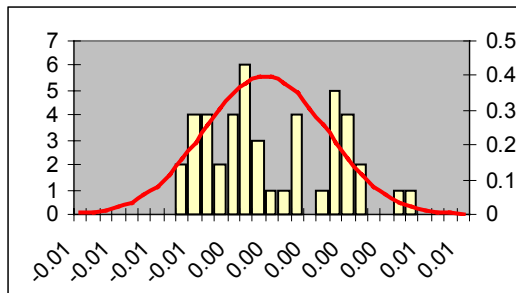
Name	Offset	Lo. Tol.	Hi. Tol.	X	Y	Z	dX	dY	dZ	DL
SP-29	0.000	-0.015	0.015	18.711	3.179	0.965	0.004	0.004	0.000	-0.006
SP-30	0.000	-0.015	0.015	17.599	4.291	1.142	0.004	0.004	0.000	-0.006
SP-31	0.000	-0.015	0.015	16.865	4.494	1.024	-0.001	0.001	0.000	-0.001
SP-32	0.000	-0.015	0.015	18.968	2.354	0.734	0.003	-0.003	0.000	-0.004
SP-33	0.000	-0.015	0.015	19.042	2.428	1.238	0.005	-0.005	0.000	-0.007
SP-34	0.000	-0.015	0.015	17.316	-4.329	0.500	0.000	0.000	0.002	0.002
SP-35	0.000	-0.015	0.015	18.487	-3.224	0.500	0.000	0.000	0.001	0.001
SP-36	0.000	-0.015	0.015	18.978	-2.364	0.808	0.002	0.002	0.000	-0.003
SP-37	0.000	-0.015	0.015	19.063	-2.450	1.139	0.003	0.003	0.000	-0.005
SP-38	0.000	-0.015	0.015	16.851	-4.480	0.830	-0.003	-0.003	0.000	-0.004
SP-39	0.000	-0.015	0.015	16.945	-4.574	1.337	-0.004	-0.004	0.000	-0.005
SP-40	0.000	-0.015	0.015	5.893	-5.114	0.500	0.000	0.000	0.000	0.000
SP-41	0.000	-0.015	0.015	8.025	-4.954	0.500	0.000	0.000	0.000	0.000
SP-42	0.000	-0.015	0.015	5.500	-5.195	0.699	-0.002	0.000	0.000	-0.002
SP-43	0.000	-0.015	0.015	5.500	-5.178	1.154	-0.007	0.000	0.000	-0.007
SP-44	0.000	-0.015	0.015	8.500	-4.996	0.993	0.006	0.000	0.000	-0.006
SP-45	0.000	-0.015	0.015	8.500	-4.988	1.390	0.005	0.000	0.000	-0.005



<b>Number of points</b>	45
<b>Out of Tolerance points</b>	0
<b>Performance</b>	<b>100%</b>

<b>Mean</b>	-0.003
<b>Std. deviation</b>	0.003

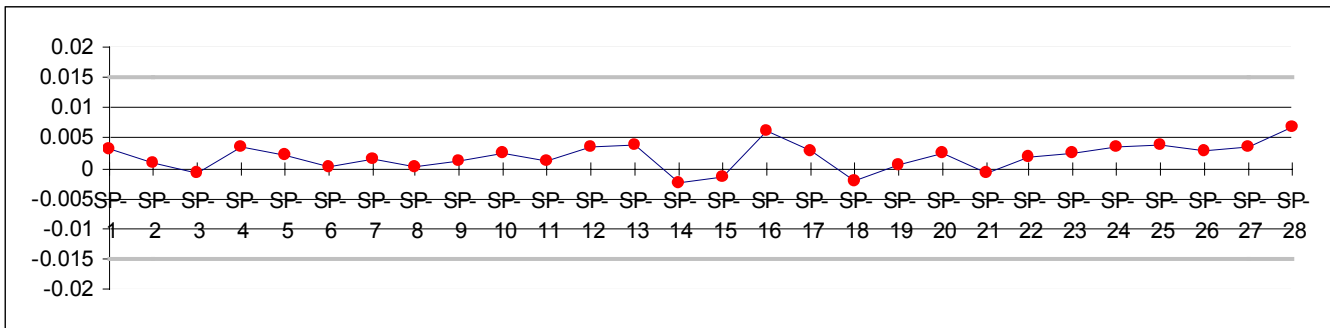
<b>Max. Value</b>	0.004
<b>Min. Value</b>	-0.007



**Heights**

**Surface Points**

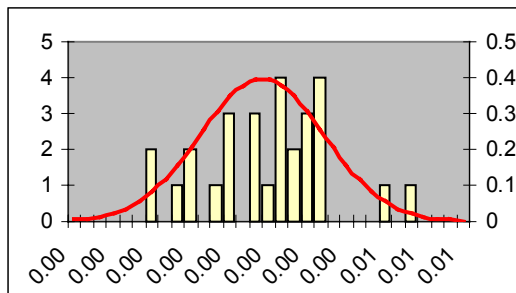
Name	Offset	Lo. Tol.	Hi. Tol.	X	Y	Z	dX	dY	dZ	DL
SP-1	0.000	-0.015	0.015	22.840	2.350	1.500	0.000	0.000	0.003	0.003
SP-2	0.000	-0.015	0.015	18.304	7.296	1.500	0.000	0.000	0.001	0.001
SP-3	0.000	-0.015	0.015	10.289	9.042	1.500	0.000	0.000	-0.001	-0.001
SP-4	0.000	-0.015	0.015	12.997	-8.849	1.500	0.000	0.000	0.004	0.004
SP-5	0.000	-0.015	0.015	8.287	-8.475	1.500	0.000	0.000	0.002	0.002
SP-6	0.000	-0.015	0.015	3.104	-8.322	1.500	0.000	0.000	0.000	0.000
SP-7	0.000	-0.015	0.015	0.519	-9.234	1.500	0.000	0.000	0.002	0.002
SP-8	0.000	-0.015	0.015	-4.621	-8.443	1.500	0.000	0.000	0.000	0.000
SP-9	0.000	-0.015	0.015	-5.907	-8.860	1.500	0.000	0.000	0.001	0.001
SP-10	0.000	-0.015	0.015	-8.964	-9.222	1.500	0.000	0.000	0.002	0.002
SP-11	0.000	-0.015	0.015	-8.911	-8.413	1.500	0.000	0.000	0.001	0.001
SP-12	0.000	-0.015	0.015	-18.366	-7.385	1.500	0.000	0.000	0.004	0.004
SP-13	0.000	-0.015	0.015	-23.003	2.184	1.500	0.000	0.000	0.004	0.004
SP-14	0.000	-0.015	0.015	-13.808	9.118	1.500	0.000	0.000	-0.003	-0.003
SP-15	0.000	-0.015	0.015	-16.295	8.265	1.500	0.000	0.000	-0.002	-0.002
SP-16	0.000	-0.015	0.015	21.236	-2.978	6.700	0.000	0.000	0.006	0.006
SP-17	0.000	-0.015	0.015	17.847	6.389	6.700	0.000	0.000	0.003	0.003
SP-18	0.000	-0.015	0.015	-2.671	7.199	6.700	0.000	0.000	-0.002	-0.002
SP-19	0.000	-0.015	0.015	-18.029	6.389	6.700	0.000	0.000	0.001	0.001
SP-20	0.000	-0.015	0.015	-17.310	-6.570	6.700	0.000	0.000	0.002	0.002
SP-21	0.000	-0.015	0.015	2.280	-7.322	6.700	0.000	0.000	-0.001	-0.001
SP-22	0.000	-0.015	0.015	1.822	5.640	1.500	0.000	0.000	0.002	0.002
SP-23	0.000	-0.015	0.015	-10.558	5.531	1.500	0.000	0.000	0.003	0.003
SP-24	0.000	-0.015	0.015	-16.723	5.487	1.500	0.000	0.000	0.003	0.003
SP-25	0.000	-0.015	0.015	-20.086	-1.754	1.500	0.000	0.000	0.004	0.004
SP-26	0.000	-0.015	0.015	-11.282	-6.091	1.500	0.000	0.000	0.003	0.003
SP-27	0.000	-0.015	0.015	11.211	-6.121	1.500	0.000	0.000	0.003	0.003
SP-28	0.000	-0.015	0.015	20.090	-1.077	1.500	0.000	0.000	0.007	0.007



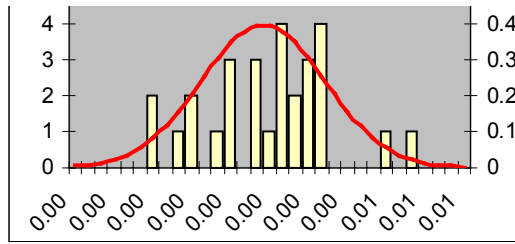
Number of points	28
Out of Tolerance points	0
Performance	100%

Mean	0.002
Std. deviation	0.002

Max. Value	0.007
Min. Value	-0.003



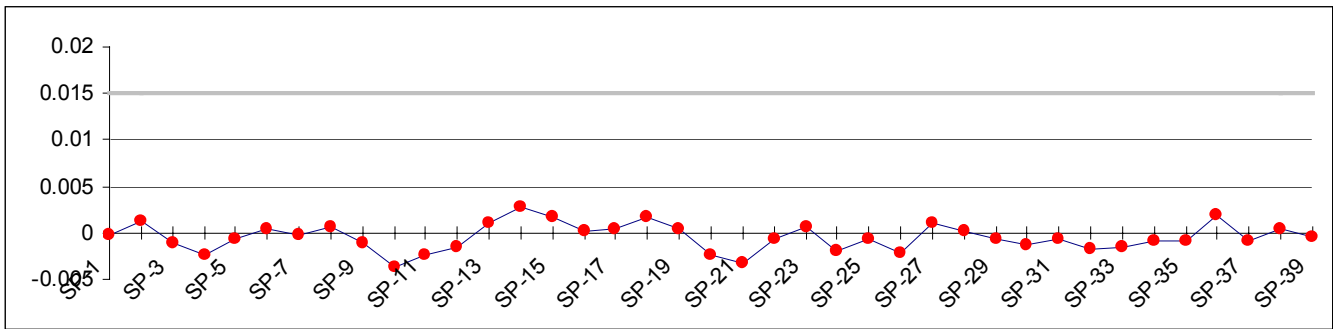
Master part



**Profiles**

**Surface Points**

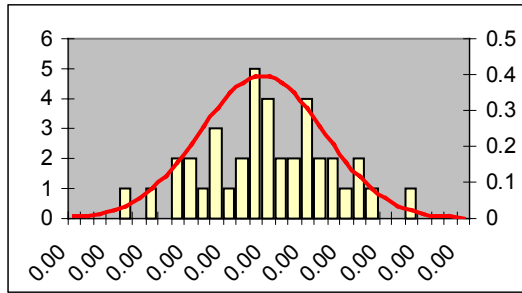
Name	Offset	Lo. Tol.	Hi. Tol.	X	Y	Z	dX	dY	dZ	DL
SP-1	0.000	0.015	0.015	17.019	9.166	1.072	0.000	0.000	0.000	0.000
SP-2	0.000	0.015	0.015	22.628	4.920	0.640	0.001	0.001	0.000	0.001
SP-3	0.000	0.015	0.015	23.975	-0.687	0.705	-0.001	0.000	0.000	-0.001
SP-4	0.000	0.015	0.015	22.489	-5.144	0.725	-0.002	0.001	0.000	-0.003
SP-5	0.000	0.015	0.015	15.000	-9.494	0.955	0.000	0.000	0.001	-0.001
SP-6	0.000	0.015	0.015	-0.712	-9.508	0.722	0.000	0.000	0.000	0.000
SP-7	0.000	0.015	0.015	-13.356	-9.508	0.734	0.000	0.000	0.000	0.000
SP-8	0.000	0.015	0.015	-19.186	-8.269	0.981	0.000	0.000	0.001	0.001
SP-9	0.000	0.015	0.015	-23.116	-4.004	0.804	0.001	0.000	0.001	-0.001
SP-10	0.000	0.015	0.015	-23.069	4.104	0.556	0.004	-0.002	0.000	-0.004
SP-11	0.000	0.015	0.015	-16.482	9.297	1.127	0.001	-0.003	0.000	-0.003
SP-12	0.000	0.015	0.015	4.485	9.508	1.115	0.000	-0.002	0.000	-0.002
SP-13	0.000	0.015	0.015	1.705	7.563	5.460	0.000	0.001	0.000	0.001
SP-14	0.000	0.015	0.015	17.974	6.714	3.861	0.001	0.002	0.000	0.003
SP-15	0.000	0.015	0.015	21.066	3.739	4.509	0.002	0.001	0.000	0.002
SP-16	0.000	0.015	0.015	21.698	-2.296	4.490	0.000	0.000	0.000	0.000
SP-17	0.000	0.015	0.015	16.604	-7.262	4.140	0.000	0.000	0.000	0.000
SP-18	0.000	0.015	0.015	2.833	-7.563	4.338	0.000	-0.002	0.000	0.002
SP-19	0.000	0.015	0.015	-19.560	-5.614	4.902	0.000	0.000	0.000	0.000
SP-20	0.000	0.015	0.015	-22.001	-0.901	5.400	0.002	0.000	0.000	-0.002
SP-21	0.000	0.015	0.015	-19.211	5.910	4.179	0.002	-0.003	0.000	-0.003
SP-22	0.000	0.015	0.015	18.918	5.179	3.499	0.000	0.001	0.000	-0.001
SP-23	0.000	0.015	0.015	21.259	0.791	3.929	-0.001	0.000	0.000	0.001
SP-24	0.000	0.015	0.015	19.733	-4.353	4.100	0.002	-0.001	0.000	-0.002
SP-25	0.000	0.015	0.015	17.567	3.774	0.268	0.001	0.001	0.000	-0.001
SP-26	0.000	0.015	0.015	19.337	0.476	0.553	0.002	0.000	0.000	-0.002
SP-27	0.000	0.015	0.015	17.731	-3.634	0.225	-0.001	0.001	0.000	0.001
SP-28	0.000	0.015	0.015	15.691	-4.718	0.764	0.000	0.000	0.000	0.000
SP-29	0.000	0.015	0.015	0.150	-4.868	0.543	0.000	-0.001	0.000	-0.001
SP-30	0.000	0.015	0.015	0.130	-6.813	5.266	0.000	-0.001	0.000	-0.001
SP-31	0.000	0.015	0.015	-16.047	-4.613	0.508	0.000	-0.001	0.000	-0.001
SP-32	0.000	0.015	0.015	-18.015	-3.360	0.293	-0.001	-0.001	0.000	-0.002
SP-33	0.000	0.015	0.015	-19.342	-0.415	0.659	-0.002	0.000	0.000	-0.002
SP-34	0.000	0.015	0.015	-15.547	4.752	0.811	0.000	0.001	0.000	-0.001
SP-35	0.000	0.015	0.015	-14.894	6.801	3.001	0.000	0.001	0.000	-0.001
SP-36	0.000	0.015	0.015	-21.217	1.092	3.434	0.002	0.000	0.000	0.002
SP-37	0.000	0.015	0.015	-18.212	-5.707	3.747	0.000	-0.001	0.000	-0.001
SP-38	0.000	0.015	0.015	-1.415	6.813	3.939	0.000	0.000	0.000	0.000
SP-39	0.000	0.015	0.015	-0.641	4.868	0.949	0.000	0.000	0.000	0.000



Number of points	39
Out of Tolerance points	39
Performance	0%

Mean	-0.001
Std. deviation	0.001

Max. Value	0.003
Min. Value	-0.004



**Bolt Holes (Flange)**

Circle 1		Lo. Tol.	Hi. Tol.	Nominal	Measured	Dev/Mean	Error
Centre	X	0.000	0.000	22.877	22.877	0.000	
	Y	0.000	0.000	-0.001	-0.001	0.000	
	Z	0.000	0.000	1.503	1.503	0.000	
Diameter		-0.100	0.100	0.503	0.503	0.000	

Circle 2		Lo. Tol.	Hi. Tol.	Nominal	Measured	Dev/Mean	Error
Centre	X	0.000	0.000	14.493	14.493	0.000	
	Y	0.000	0.000	-8.379	-8.379	0.000	
	Z	0.000	0.000	1.504	1.504	0.000	
Diameter		-0.100	0.100	0.506	0.506	0.000	

Circle 3		Lo. Tol.	Hi. Tol.	Nominal	Measured	Dev/Mean	Error
Centre	X	0.000	0.000	0.005	0.005	0.000	
	Y	0.000	0.000	-8.384	-8.384	0.000	
	Z	0.000	0.000	1.504	1.504	0.000	
Diameter		-0.100	0.100	0.508	0.508	0.000	

Circle 4		Lo. Tol.	Hi. Tol.	Nominal	Measured	Dev/Mean	Error
Centre	X	0.000	0.000	-14.487	-14.487	0.000	
	Y	0.000	0.000	-8.378	-8.378	0.000	
	Z	0.000	0.000	1.504	1.504	0.000	
Diameter		-0.100	0.100	0.506	0.507	0.000	

<b>Circle 5</b>		Lo. Tol.	Hi. Tol.	Nominal	Measured	Dev/Mean	Error
<b>Centre</b>	X	0.000	0.000	-22.874	-22.874	0.000	
	Y	0.000	0.000	-0.003	-0.003	0.000	
	Z	0.000	0.000	1.503	1.503	0.000	
<b>Diameter</b>		-0.100	0.100	0.502	0.502	0.000	

<b>Circle 6</b>		Lo. Tol.	Hi. Tol.	Nominal	Measured	Dev/Mean	Error
<b>Centre</b>	X	0.000	0.000	-14.495	-14.495	0.000	
	Y	0.000	0.000	8.376	8.376	0.000	
	Z	0.000	0.000	1.502	1.502	0.000	
<b>Diameter</b>		-0.100	0.100	0.505	0.505	0.000	

<b>Circle 7</b>		Lo. Tol.	Hi. Tol.	Nominal	Measured	Dev/Mean	Error
<b>Centre</b>	X	0.000	0.000	14.494	14.494	0.000	
	Y	0.000	0.000	8.371	8.371	0.000	
	Z	0.000	0.000	1.502	1.502	0.000	
<b>Diameter</b>		-0.100	0.100	0.505	0.505	0.000	

<b>Circle 9</b>		Lo. Tol.	Hi. Tol.	Nominal	Measured	Dev/Mean	Error
<b>Centre</b>	X	0.000	0.000	14.484	14.484	0.000	
	Y	0.000	0.000	5.990	5.990	0.000	
	Z	0.000	0.000	1.502	1.502	0.000	
<b>Diameter</b>		-0.100	0.100	0.505	0.505	0.000	

<b>Circle 10</b>		Lo. Tol.	Hi. Tol.	Nominal	Measured	Dev/Mean	Error
<b>Centre</b>	X	0.000	0.000	-0.004	-0.004	0.000	
	Y	0.000	0.000	5.985	5.985	0.000	
	Z	0.000	0.000	1.502	1.502	0.000	
<b>Diameter</b>		-0.100	0.100	0.506	0.506	0.000	

<b>Circle 11</b>		Lo. Tol.	Hi. Tol.	Nominal	Measured	Dev/Mean	Error
<b>Centre</b>	X	0.000	0.000	-14.482	-14.482	0.000	
	Y	0.000	0.000	5.999	5.999	0.000	
	Z	0.000	0.000	1.502	1.502	0.000	
<b>Diameter</b>		-0.100	0.100	0.506	0.506	0.000	

**Circle 12**

		Lo. Tol.	Hi. Tol.	Nominal	Measured	Dev/Mean	Error
Centre	X	0.000	0.000	-20.486	-20.486	0.000	
	Y	0.000	0.000	0.000	0.000	0.000	
	Z	0.000	0.000	1.503	1.503	0.000	
Diameter		-0.100	0.100	0.506	0.506	0.000	

**Circle 13**

		Lo. Tol.	Hi. Tol.	Nominal	Measured	Dev/Mean	Error
Centre	X	0.000	0.000	-14.472	-14.472	0.000	
	Y	0.000	0.000	-6.000	-6.000	0.000	
	Z	0.000	0.000	1.504	1.504	0.000	
Diameter		-0.100	0.100	0.508	0.508	0.000	

**Circle 14**

		Lo. Tol.	Hi. Tol.	Nominal	Measured	Dev/Mean	Error
Centre	X	0.000	0.000	0.001	0.001	0.000	
	Y	0.000	0.000	-5.993	-5.993	0.000	
	Z	0.000	0.000	1.504	1.504	0.000	
Diameter		-0.100	0.100	0.505	0.505	0.000	

**Circle 15**

		Lo. Tol.	Hi. Tol.	Nominal	Measured	Dev/Mean	Error
Centre	X	0.000	0.000	14.516	14.516	0.000	
	Y	0.000	0.000	-5.991	-5.991	0.000	
	Z	0.000	0.000	1.504	1.504	0.000	
Diameter		-0.100	0.100	0.506	0.506	0.000	

**Circle 16**

		Lo. Tol.	Hi. Tol.	Nominal	Measured	Dev/Mean	Error
Centre	X	0.000	0.000	20.493	20.493	0.000	
	Y	0.000	0.000	0.004	0.004	0.000	
	Z	0.000	0.000	1.503	1.503	0.000	
Diameter		-0.100	0.100	0.506	0.506	0.000	

**Generated Features**

**Bolt Holes (Top)**

**Point 17**

		Lo. Tol.	Hi. Tol.	Nominal	Measured	Dev/Mean	Error
Centre	X	0.000	0.000	19.569	19.569	0.000	
	Y	0.000	0.000	-5.084	-5.084	0.000	
	Z	0.000	0.000	6.703	6.703	0.000	
Diameter		-0.100	0.100	0.397	0.397	0.000	



Master part

<b>Point 18</b>		Lo. Tol.	Hi. Tol.	Nominal	Measured	Dev/Mean	Error
<b>Centre</b>	X	0.000	0.000	6.994	6.994	0.000	
	Y	0.000	0.000	-7.189	-7.189	0.000	
	Z	0.000	0.000	6.703	6.703	0.000	
<b>Diameter</b>		-0.100	0.100	0.399	0.399	0.000	

<b>Point 19</b>		Lo. Tol.	Hi. Tol.	Nominal	Measured	Dev/Mean	Error
<b>Centre</b>	X	0.000	0.000	-7.011	-7.011	0.000	
	Y	0.000	0.000	-7.195	-7.195	0.000	
	Z	0.000	0.000	6.702	6.702	0.000	
<b>Diameter</b>		-0.100	0.100	0.395	0.395	0.000	

<b>Point 20</b>		Lo. Tol.	Hi. Tol.	Nominal	Measured	Dev/Mean	Error
<b>Centre</b>	X	0.000	0.000	-19.579	-19.579	0.000	
	Y	0.000	0.000	-5.089	-5.089	0.000	
	Z	0.000	0.000	6.700	6.700	0.000	
<b>Diameter</b>		-0.100	0.100	0.391	0.391	0.000	

<b>Point 21</b>		Lo. Tol.	Hi. Tol.	Nominal	Measured	Dev/Mean	Error
<b>Centre</b>	X	0.000	0.000	-19.571	-19.571	0.000	
	Y	0.000	0.000	5.074	5.074	0.000	
	Z	0.000	0.000	6.698	6.698	0.000	
<b>Diameter</b>		-0.100	0.100	0.393	0.393	0.000	

<b>Point 22</b>		Lo. Tol.	Hi. Tol.	Nominal	Measured	Dev/Mean	Error
<b>Centre</b>	X	0.000	0.000	-6.990	-6.990	0.000	
	Y	0.000	0.000	7.183	7.183	0.000	
	Z	0.000	0.000	6.699	6.699	0.000	
<b>Diameter</b>		-0.100	0.100	0.398	0.398	0.000	

<b>Point 23</b>		Lo. Tol.	Hi. Tol.	Nominal	Measured	Dev/Mean	Error
<b>Centre</b>	X	0.000	0.000	7.003	7.003	0.000	
	Y	0.000	0.000	7.189	7.189	0.000	
	Z	0.000	0.000	6.700	6.700	0.000	
<b>Diameter</b>		-0.100	0.100	0.398	0.398	0.000	

<b>Point 24</b>		Lo. Tol.	Hi. Tol.	Nominal	Measured	Dev/Mean	Error
<b>Centre</b>	X	0.000	0.000	19.574	19.574	0.000	
	Y	0.000	0.000	5.088	5.088	0.000	
	Z	0.000	0.000	6.701	6.701	0.000	
<b>Diameter</b>		-0.100	0.100	0.393	0.393	0.000	