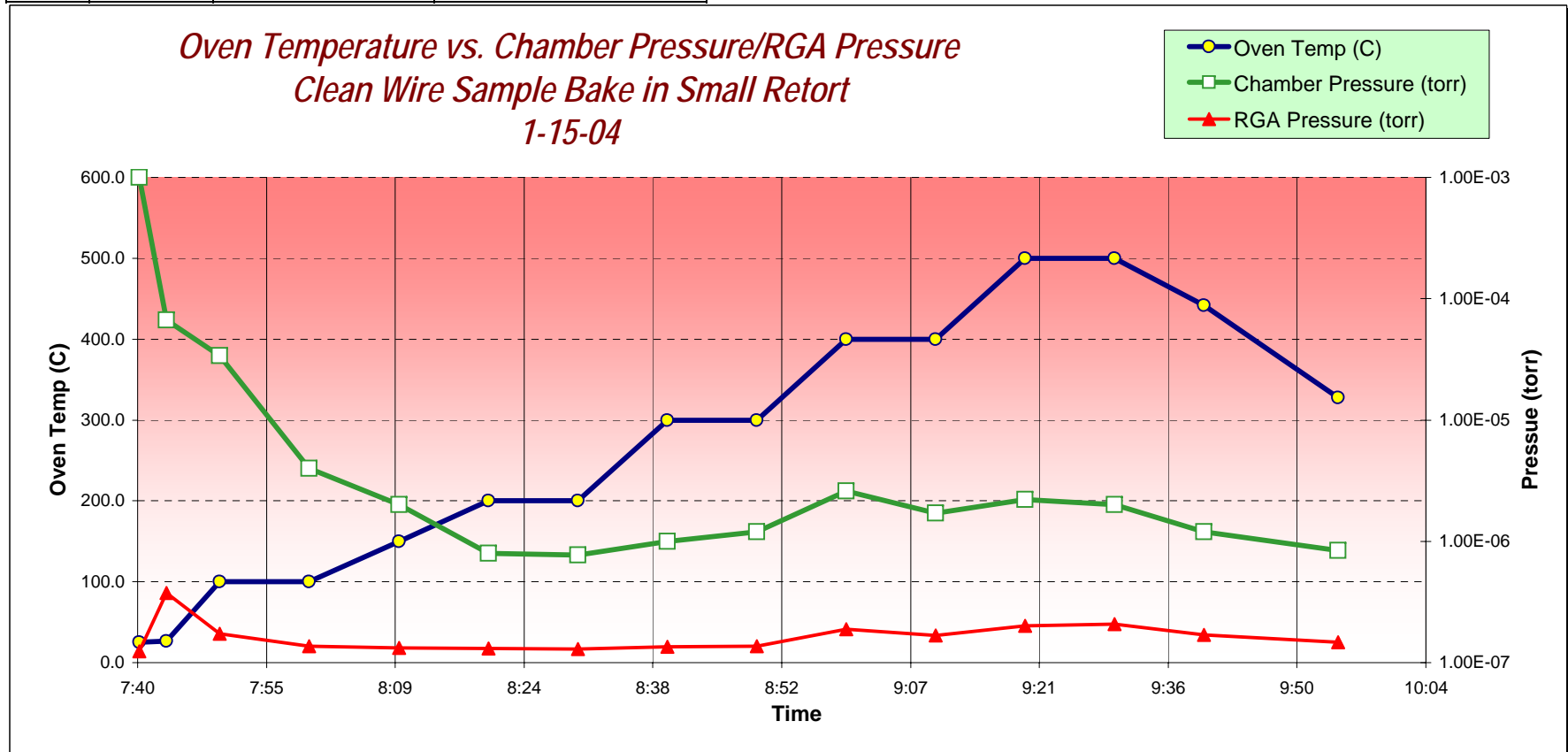
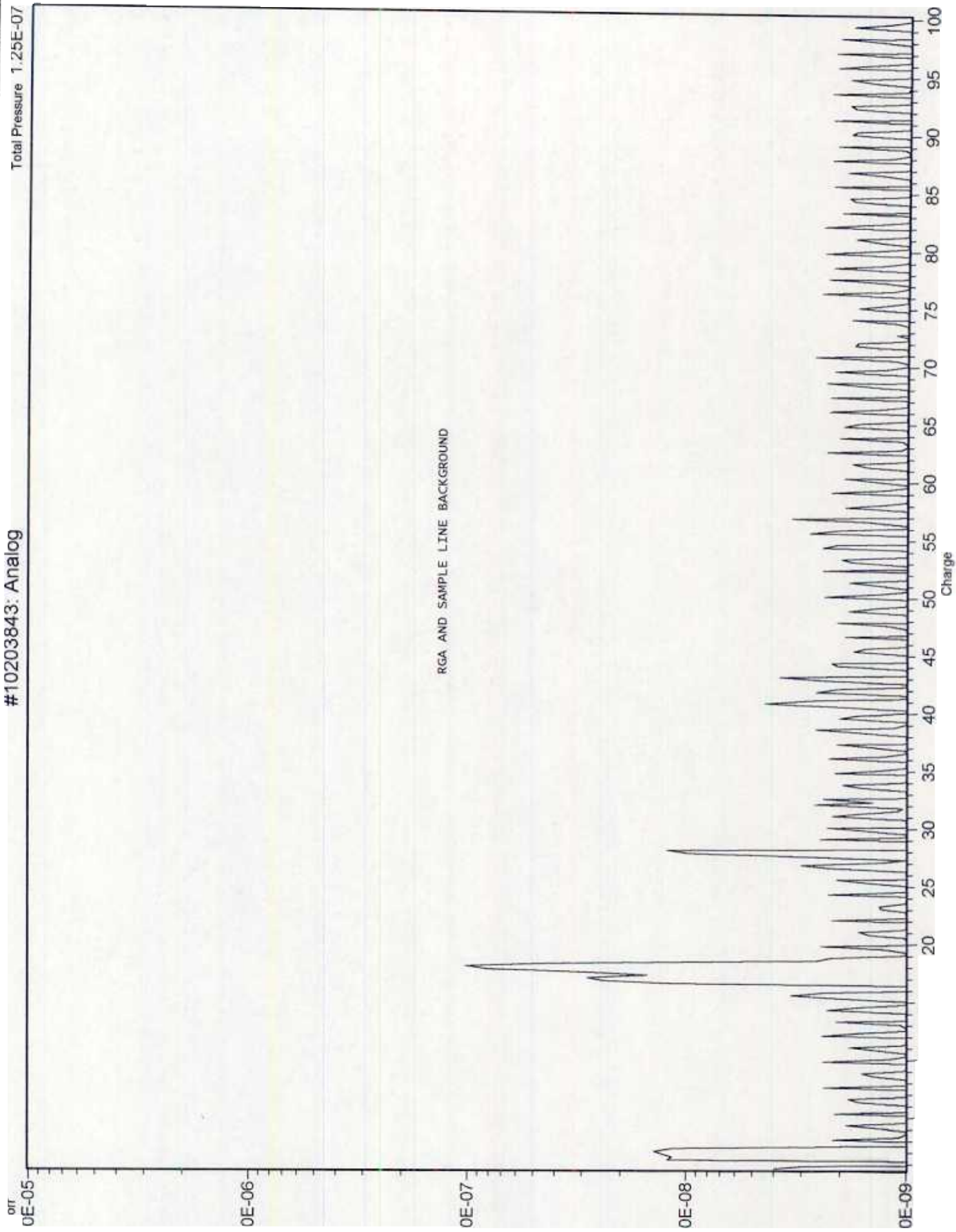


Time	(C)	RGA Pressure (torr)	Chamber Pressure (torr)
7:41	25.0	1.24E-07	1.00E-03
7:44	26.8	3.77E-07	6.70E-05
7:50	100.0	1.73E-07	3.40E-05
8:00	100.0	1.36E-07	4.00E-06
8:10	150.0	1.32E-07	2.00E-06
8:20	200.0	1.31E-07	8.00E-07
8:30	200.0	1.29E-07	7.70E-07
8:40	300.0	1.35E-07	1.00E-06
8:50	300.0	1.37E-07	1.20E-06
9:00	400.0	1.89E-07	2.60E-06
9:10	400.0	1.68E-07	1.70E-06
9:20	500.0	2.02E-07	2.20E-06
9:30	500.0	2.08E-07	2.00E-06
9:40	442.0	1.69E-07	1.20E-06
9:55	328.0	1.48E-07	8.40E-07



#10203843: Analog

Total Pressure 1.25E-07



Total Pressure 3.35E-07

#10203843: Analog

Torr  
0E-05

0E-06

0E-07

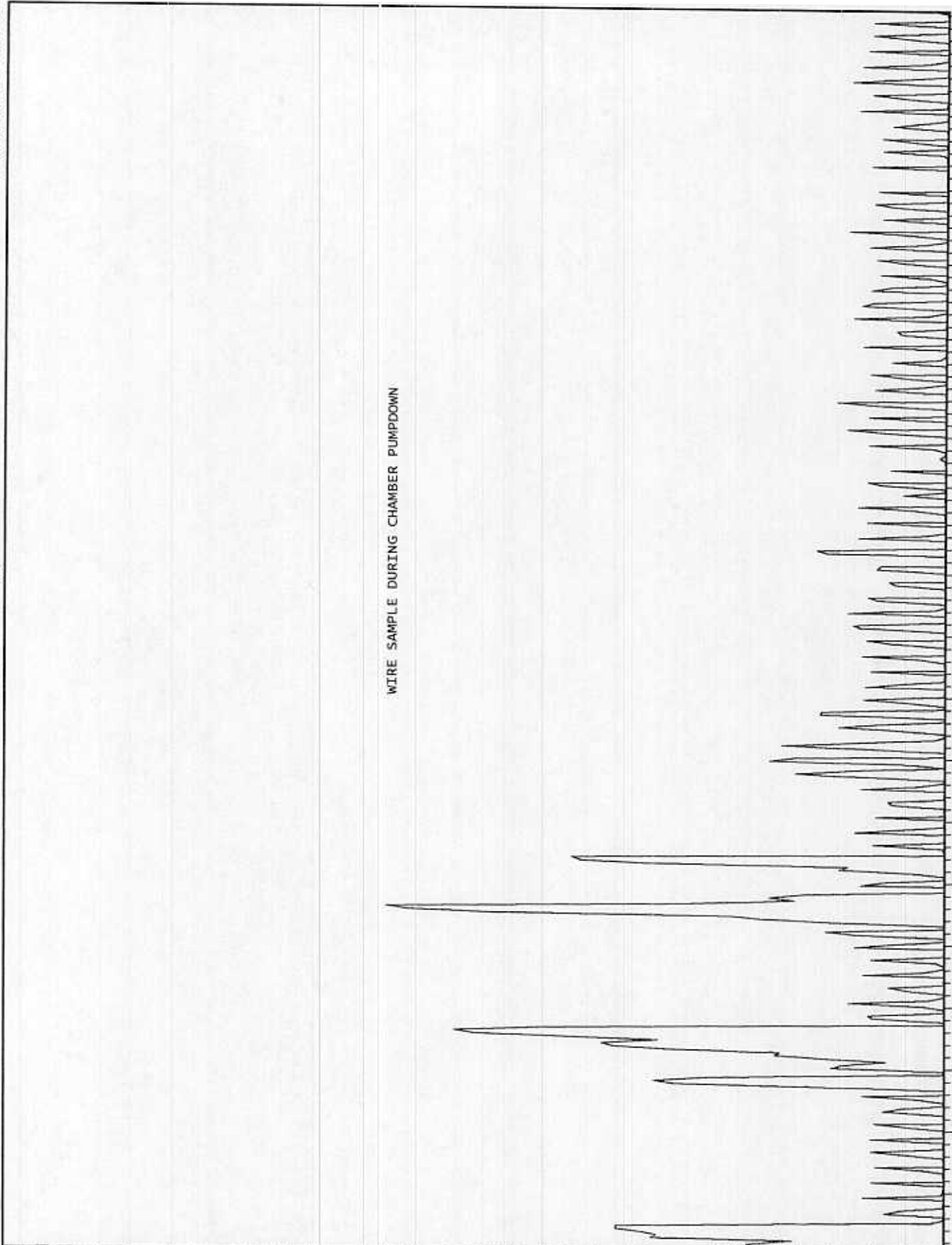
0E-08

0E-09

WIRE SAMPLE DURING CHAMBER PUMPDOWN

Charge

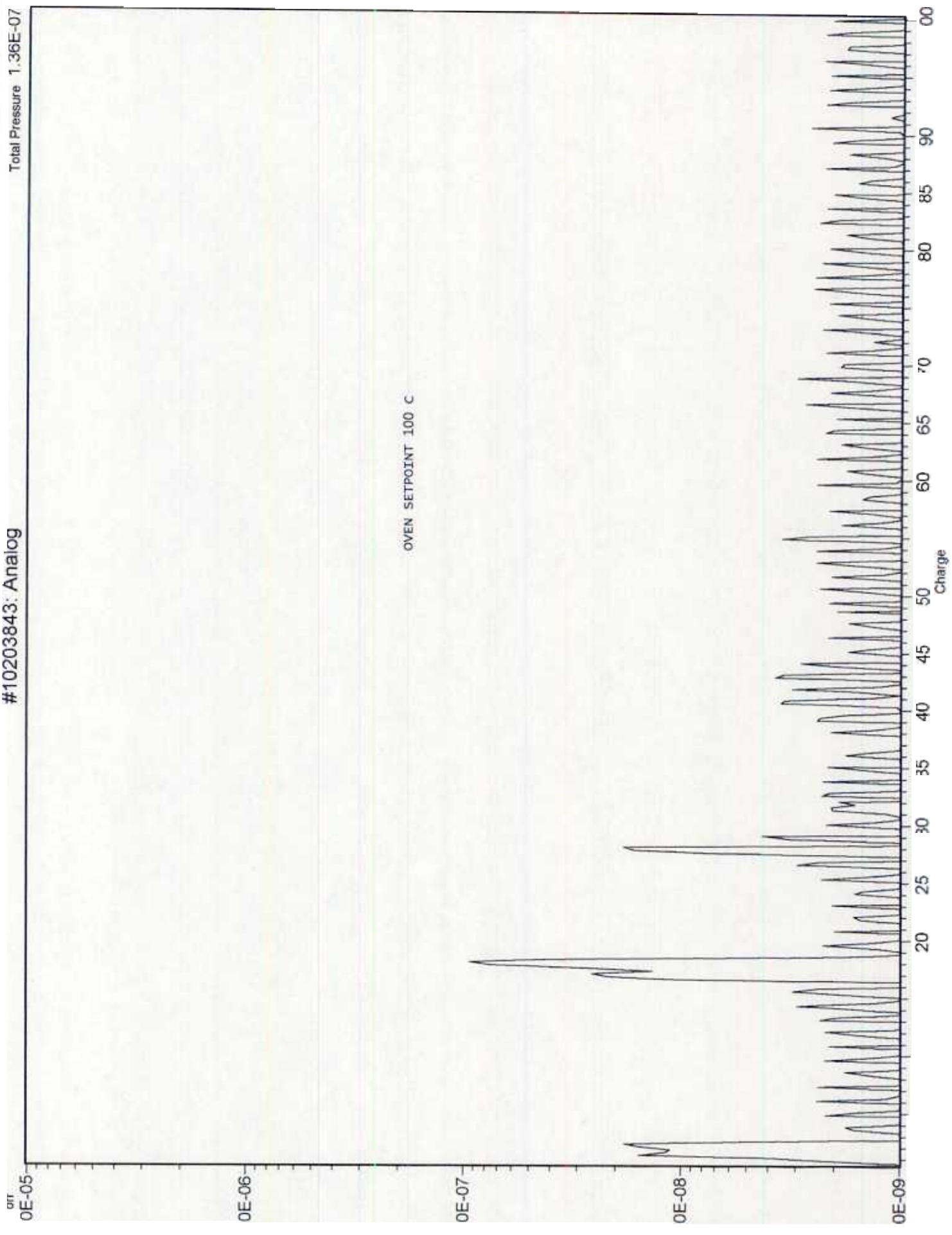
20 30 40 45 50 60 65 70 80 85 90 95 00



Total Pressure 1.36E-07

#10203843: Analog

OVEN SETPOINT 100 C



Total Pressure 1.30E-07

#10203843: Analog

Torr  
0E-05

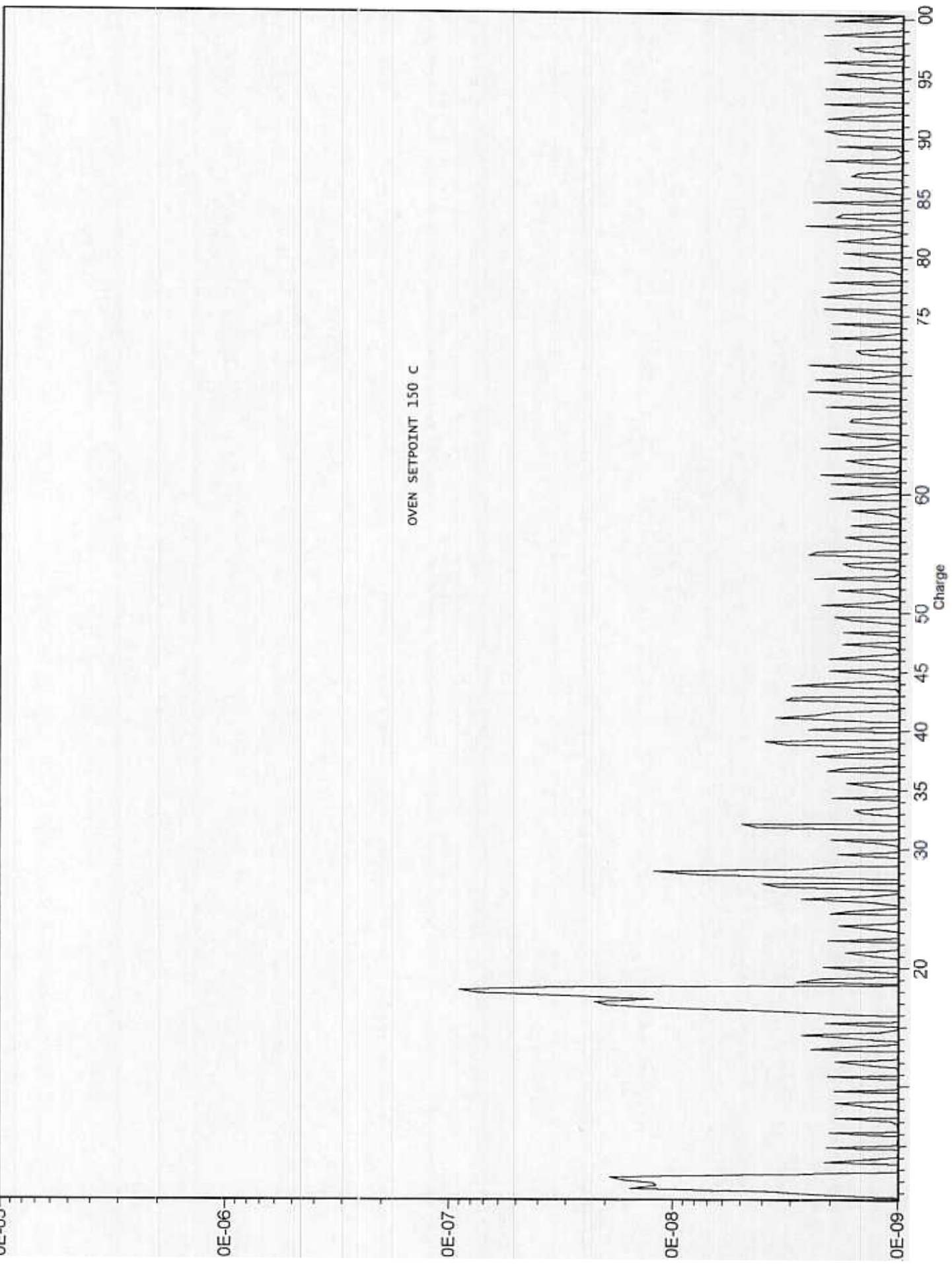
0E-06

0E-07

0E-08

0E-09

OVEN SETPOINT 150 C



Charge

Total Pressure 1.32E-07

#10203843: Analog

Torr  
0E-05

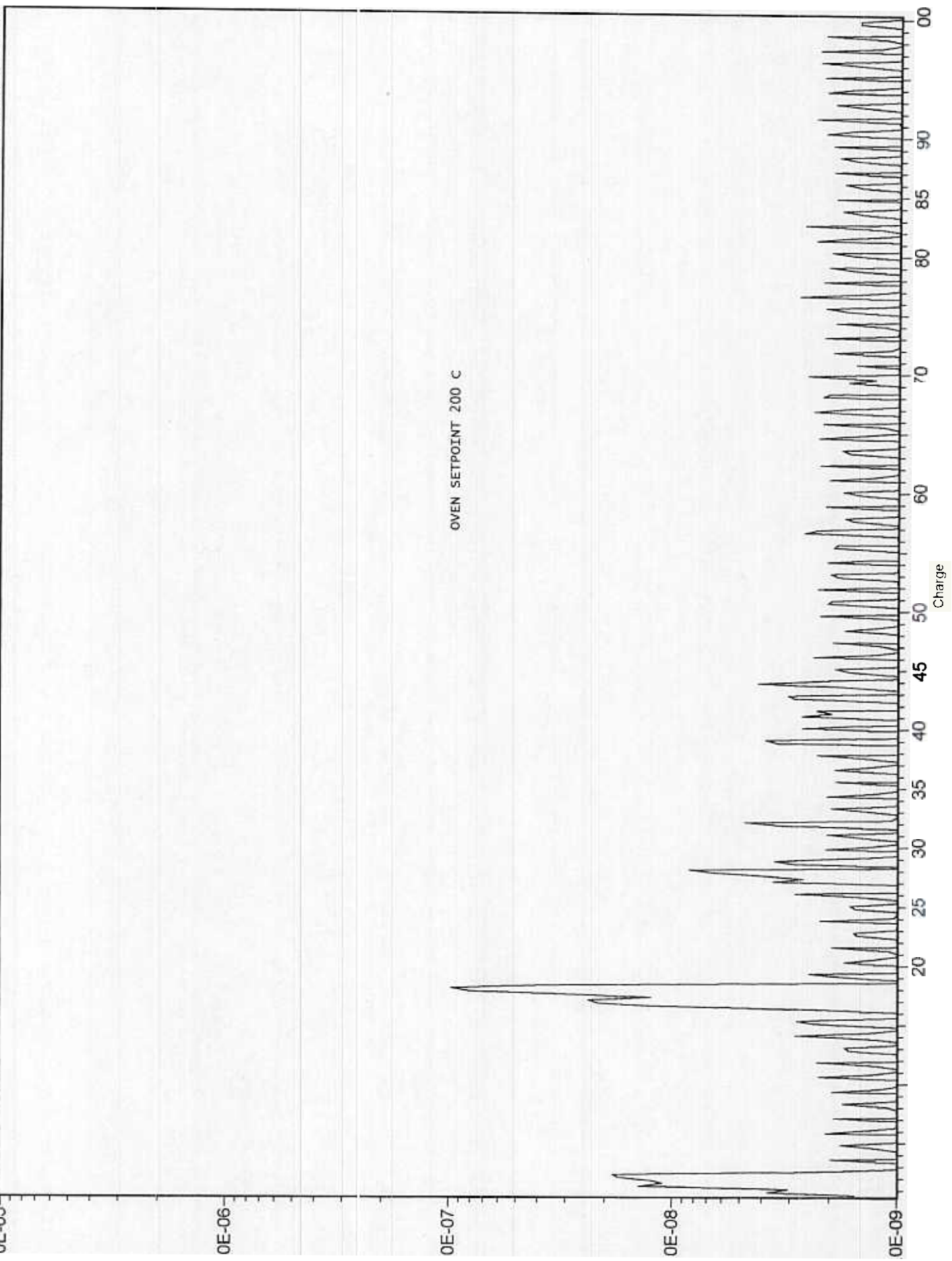
0E-06

0E-07

0E-08

0E-09

OVEN SETPOINT 200 C



Charge

CLEAN WIRE: 3A1 = 1-15-

Total Pressure 1.29E-07

#10203843: Analog

0E-05

-06

0E-0

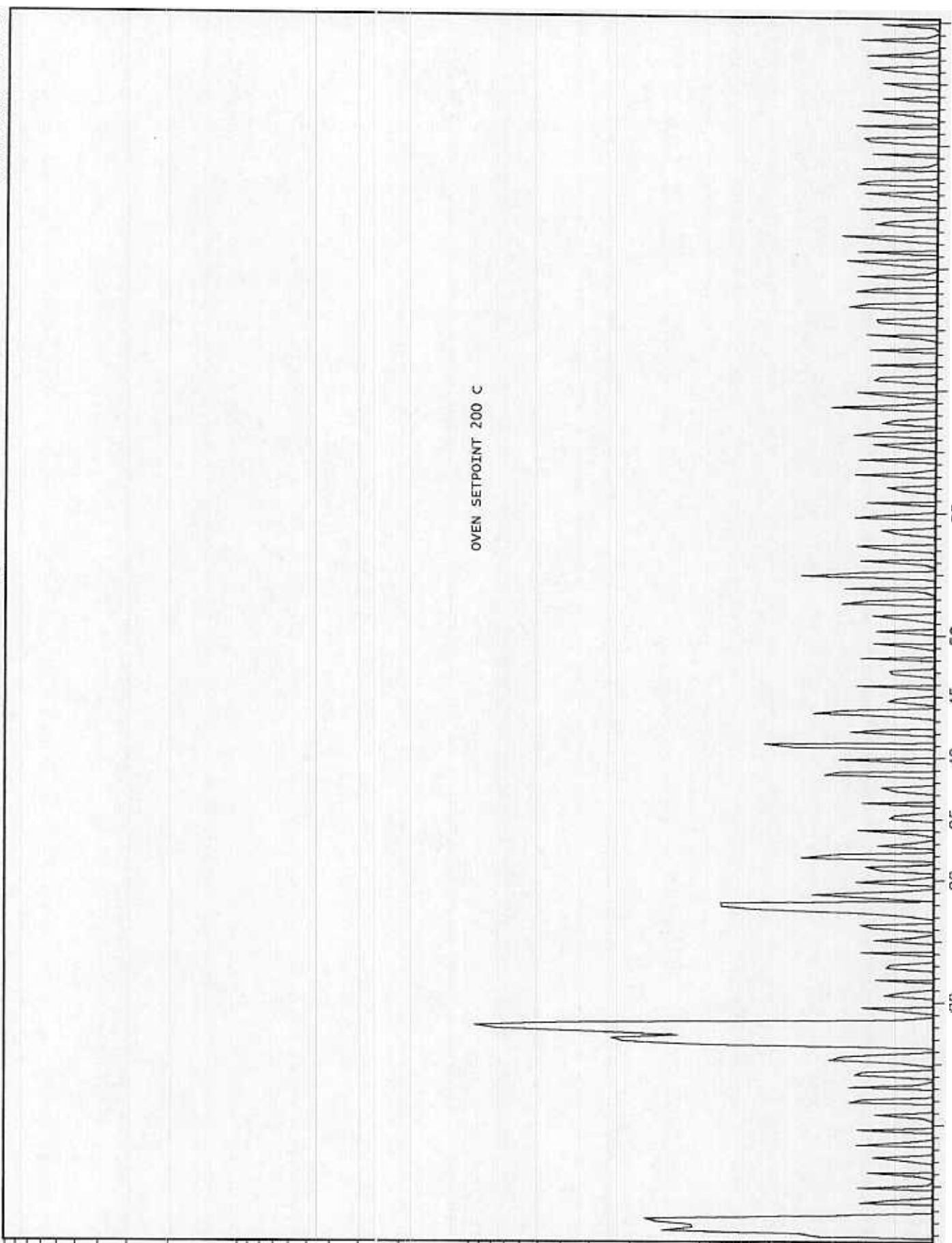
E-08

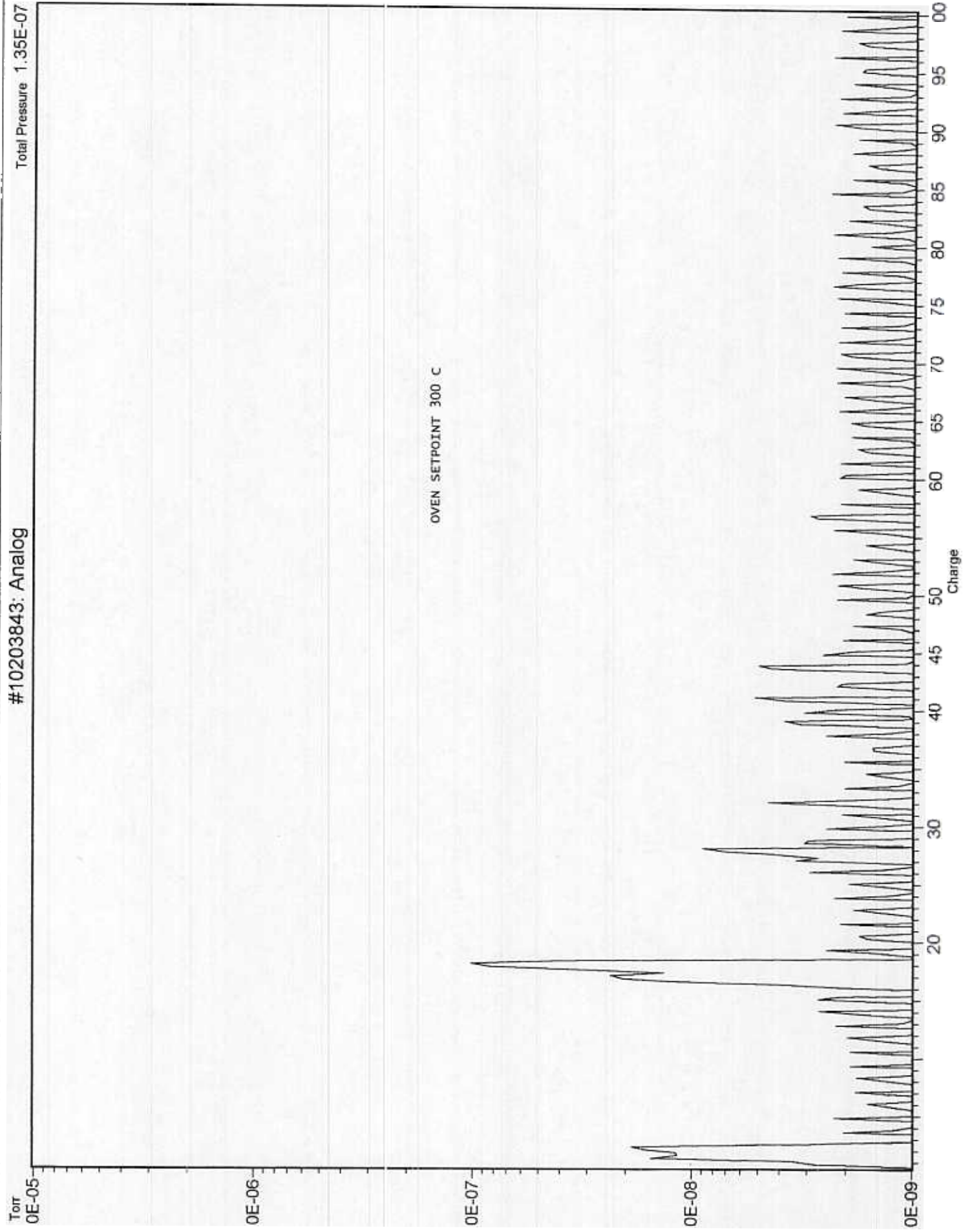
0E-09

OVEN SETPOINT 200 C

Charge

20 30 35 40 45 50 60 80 85 90 95 00







Total Pressure 1.38E-07

#10203843: Analog

Torr  
0E-05

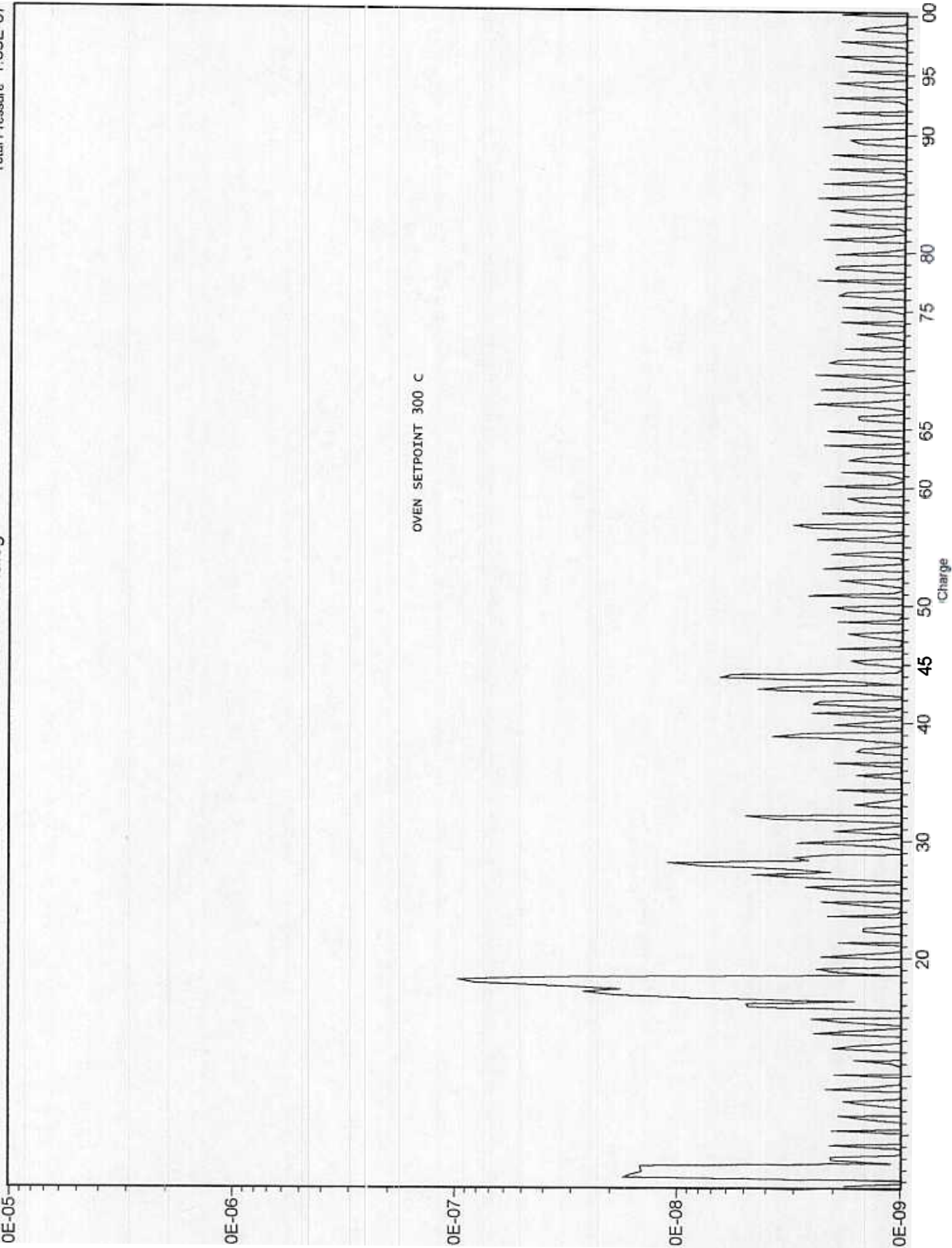
0E-06

0E-07

0E-08

0E-09

OVEN SETPOINT 300 C



Charge

Total Pressure 1.77E-07

#10203843: Analog

Torr  
0E-05

0E-06

0E-07

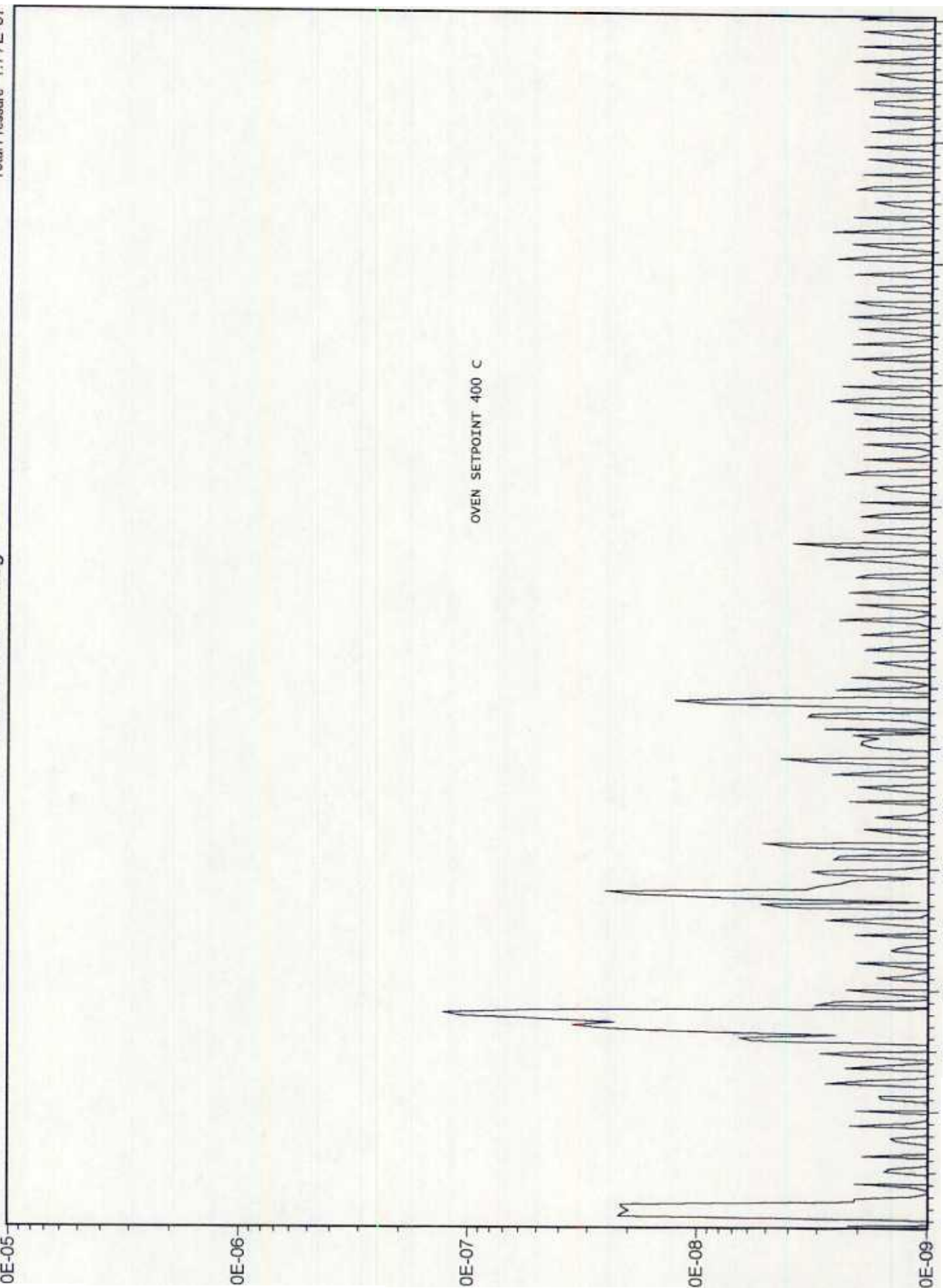
0E-08

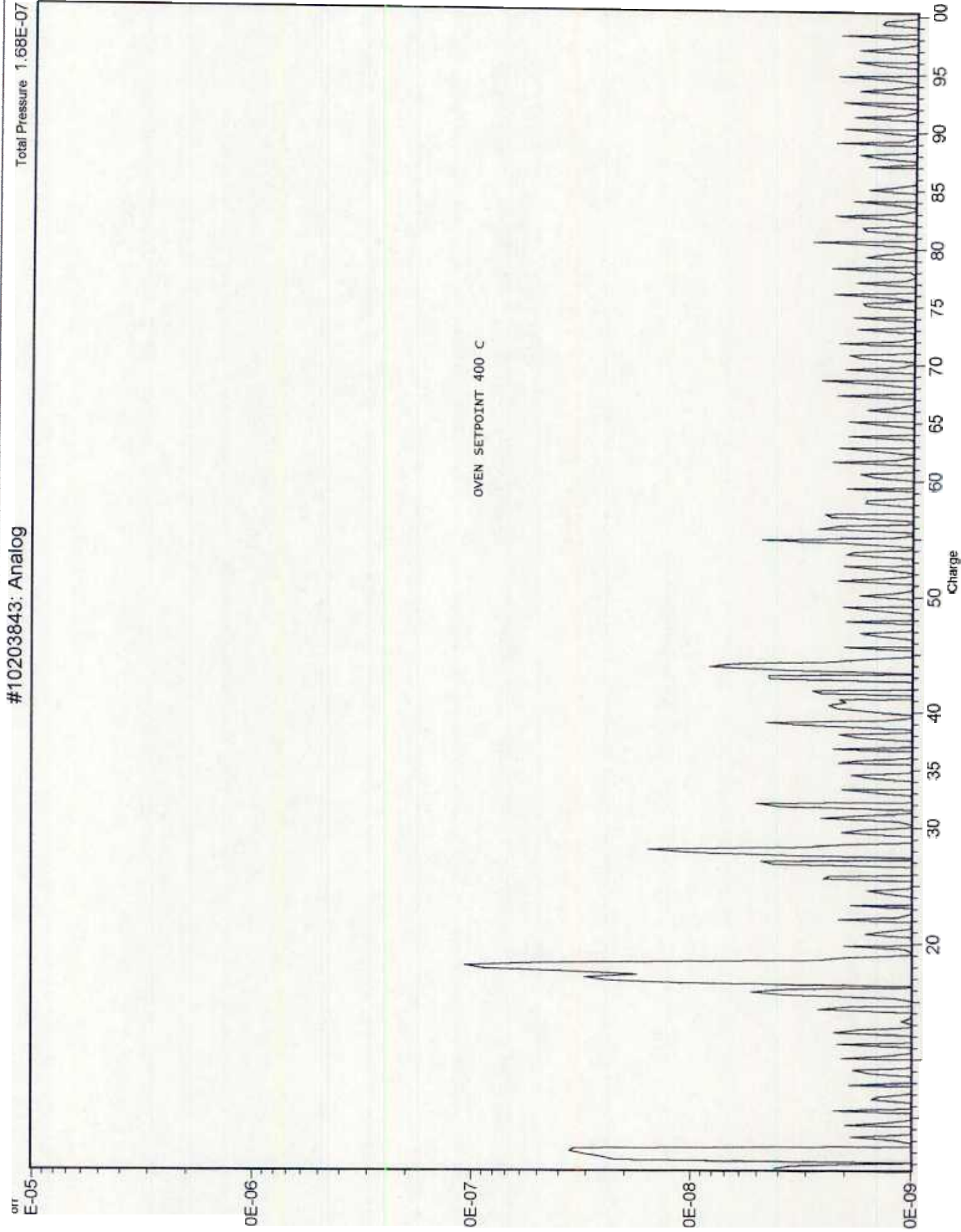
0E-09

OVEN SETPOINT 400 C

Charge

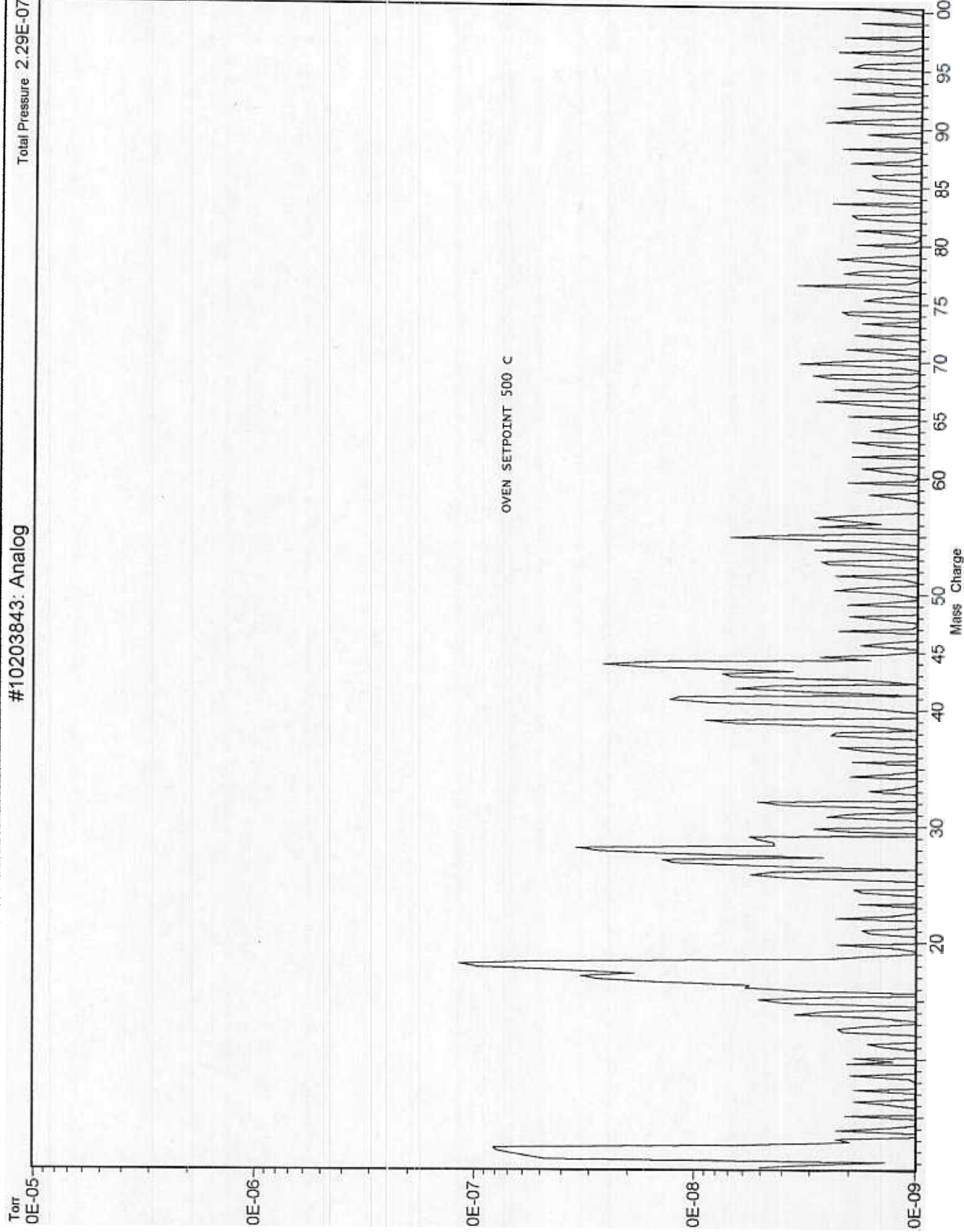
20 25 30 35 40 45 50 55 60 65 70 75 80 85 90 95 100



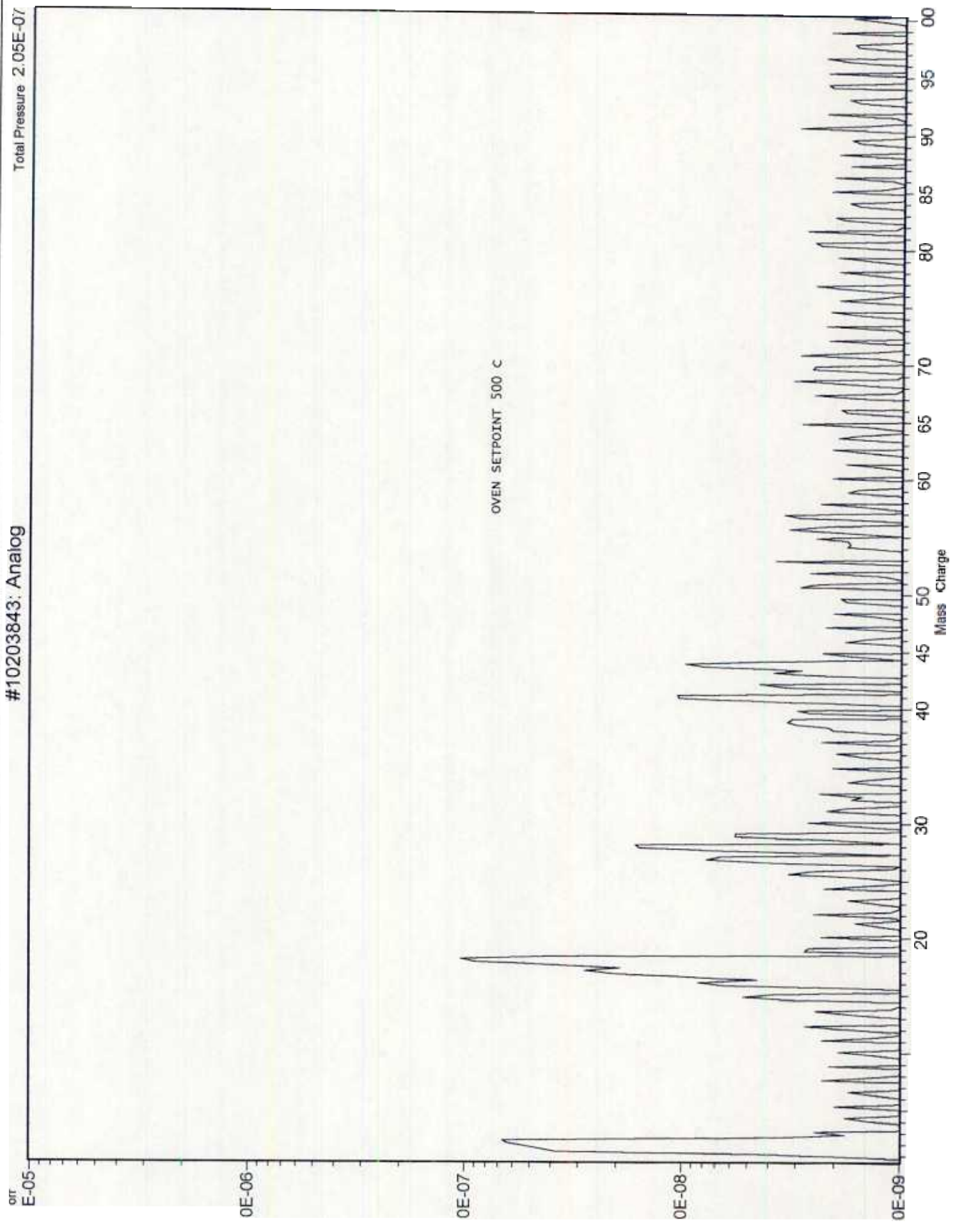


#10203843: Analog

Total Pressure 2.29E-07



#10203843: Analog  
Total Pressure 2.05E-07



Total Pressure 1.69E-07

#10203843: Analog

Torr  
0E-05

0E-06

0E-07

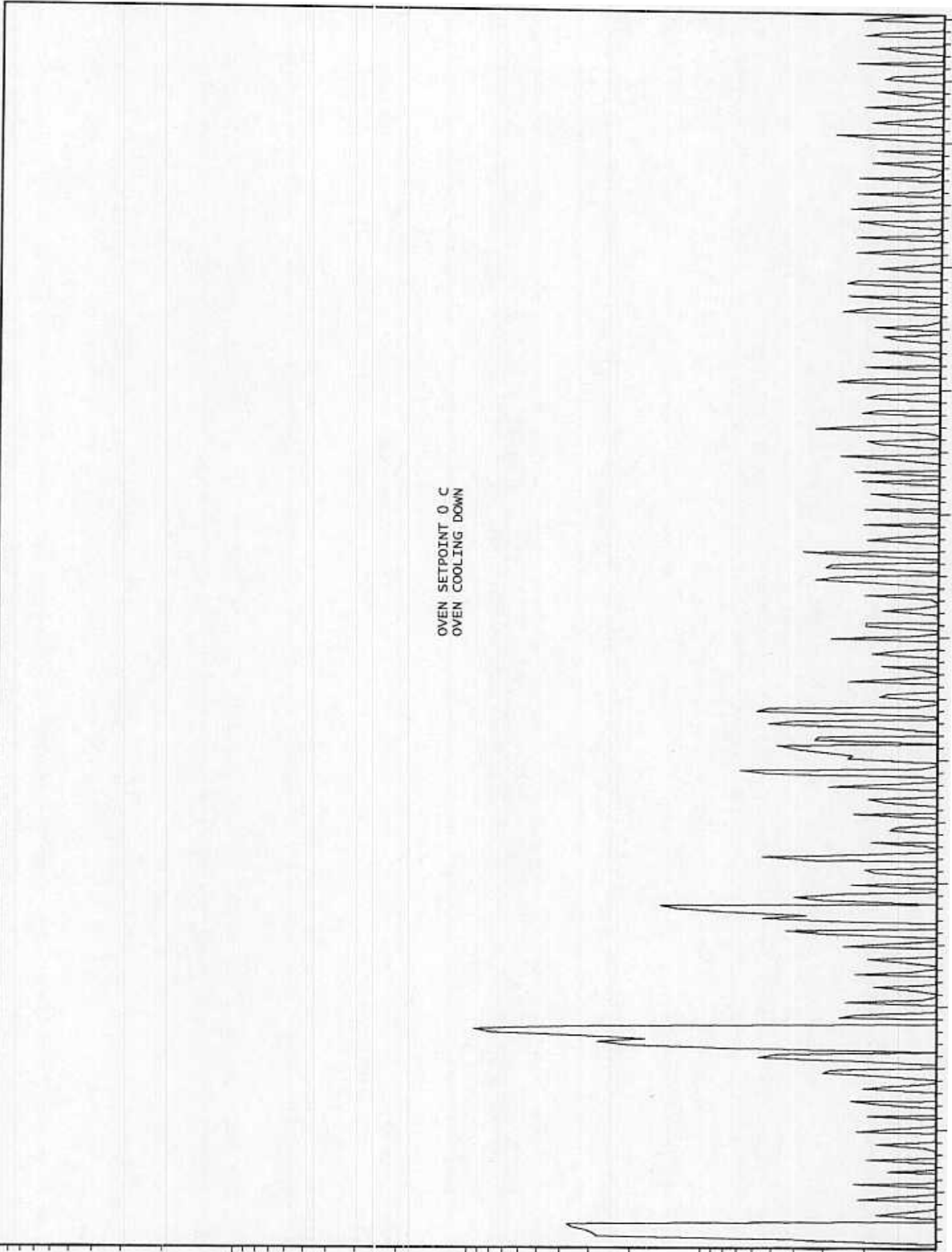
0E-08

0E-09

OVEN SETPOINT 0 C  
OVEN COOLING DOWN

Mass / Charge

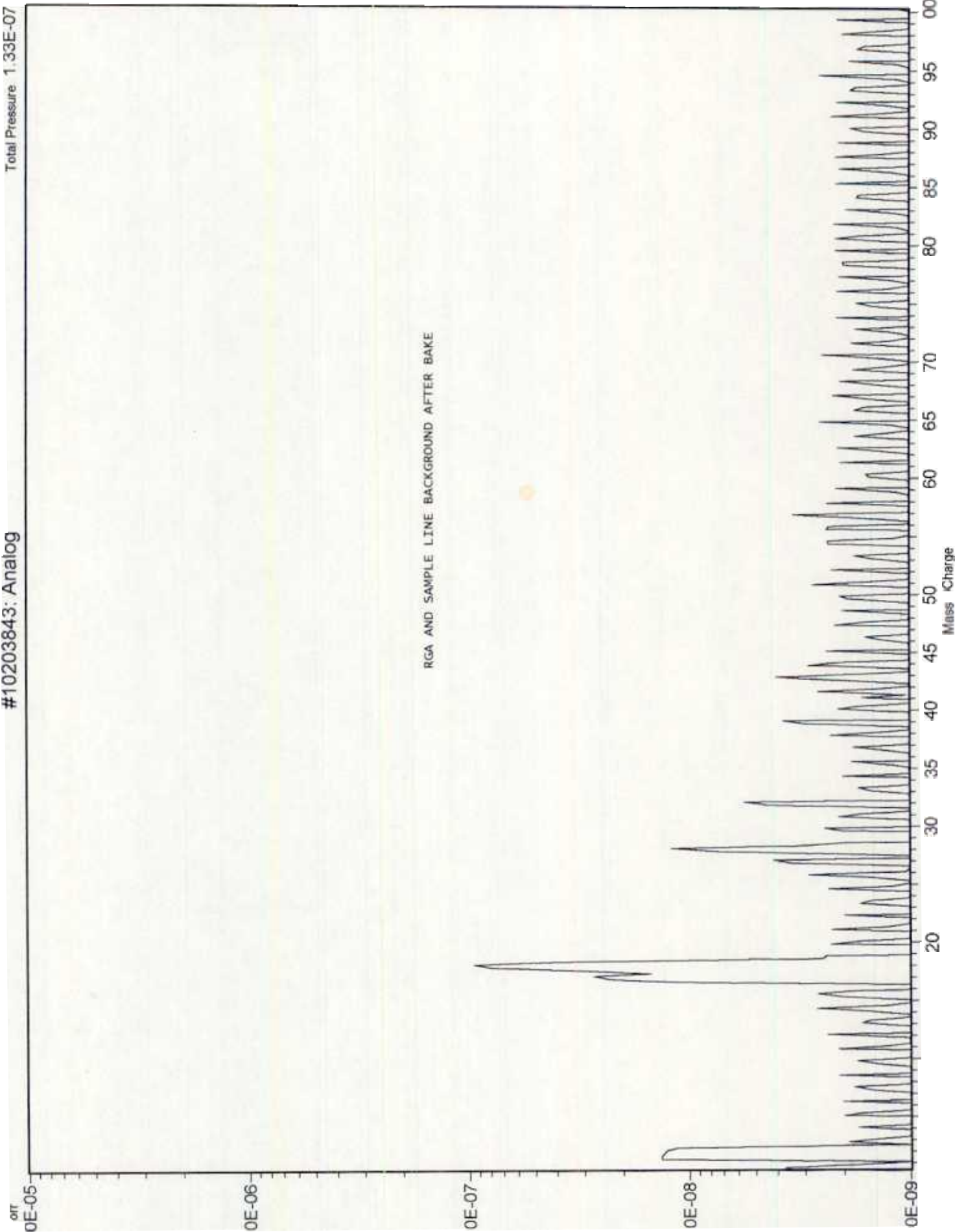
20 25 30 35 40 45 50 60 70 80 85 90 95 00



CLEAN WIRE BAKE 1-15

Total Pressure 1.33E-07

#10203843: Analog



Mass Charge