

<b>Status</b>	9 - Closed NCR	<b>Trend</b>	06-Workmanship/Needs Repair
<b>Department</b>	NCSX	<b>Division</b>	NCSX Project
<b>Source/Org</b>	FABRICATION, OPERATIONS & MAINTENANCE		
<b>Item Dwg/Part#</b>	N/A	<b>Procurement #</b>	D-NCSX-MCF-002
<b>RAP#</b>	3210	<b>Job Doc #</b>	D-NCSX-MCF-002
<b>Vendor</b>			
<b>RAP Title</b>	Modular Coil Fabrication Winding Station Activities		

HoldTag Applied

**Nonconforming Condition (include requirement(s) violated):**

MCWF C5, While preparing the conductors for final termination on the C5 modular coil the A1 conductor was inadvertently cut two inches (2") too short.

<b>Lot Size Recd</b>	0	<b>Sample Size Insp</b>	0	<input type="checkbox"/> Lot Rejected	<b># Rejected</b>	0
<b>Reported By</b>	Chrzanowski J	<b>Validated By</b>	Boscoe J	<b>Validated Date</b>	08/29/06	

**Disposition:** Rework\*  Repair\*  Use As Is\*  Return To Vendor\*  Scrap\*  **Rework**

Fabricate copper adapter that will be brazed to lug to accommodate the shortened copper conductor. Sample was fabricated, brazed and Welding QC inspected with excellent results. Adapter will be drawn and added as a special lug on the A1 lead position of the C5 coil. Photo's of adapter and braze results are attached

**For rework or repair of vendor supplied equipments, fill in information below:**

<b>#Hours</b>	_____	<b>\$Est Labor</b>	_____	<b>\$G&amp;A</b>	_____
<b>\$Material</b>	_____	<b>\$Burden</b>	_____	<b>\$Total</b>	_____

<b>Disposition By</b>	Chrzanowski J	<b>Date</b>	09/08/06
<b>Supervisor's Concur</b>	Reiersen W	<b>Date</b>	09/08/06
<b>Eng. Dept. Head Concur</b>	Williams M	<b>Date</b>	09/08/06
<b>WCO/Other</b>	N/A	<b>Date</b>	_____

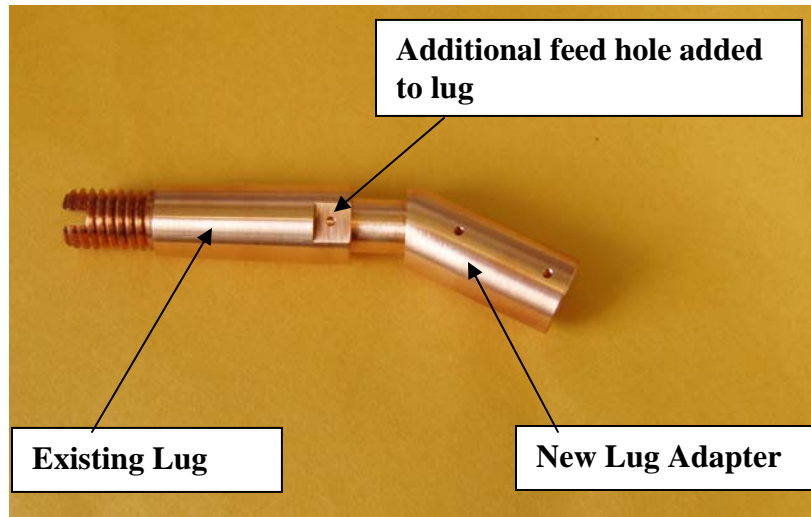
<b>PQA/QC Mgr Dispos Concur</b>	Boscoe J	<b>Date</b>	09/11/06
<b>QC Field Verification By</b>	Phelps C	<b>Date</b>	09/12/06

**Distribution**

**Cog** J. Chrzanowski  
**Insp** Phelps C  
 Proj. Doc Control (when closed)  
 QC Files  
 Malsbury J  
 Boscoe J  
 T. Meighan  
 Reiersen W  
 Williams M  
 Dudek L  
 Tyrrell M  
 Malinowski F

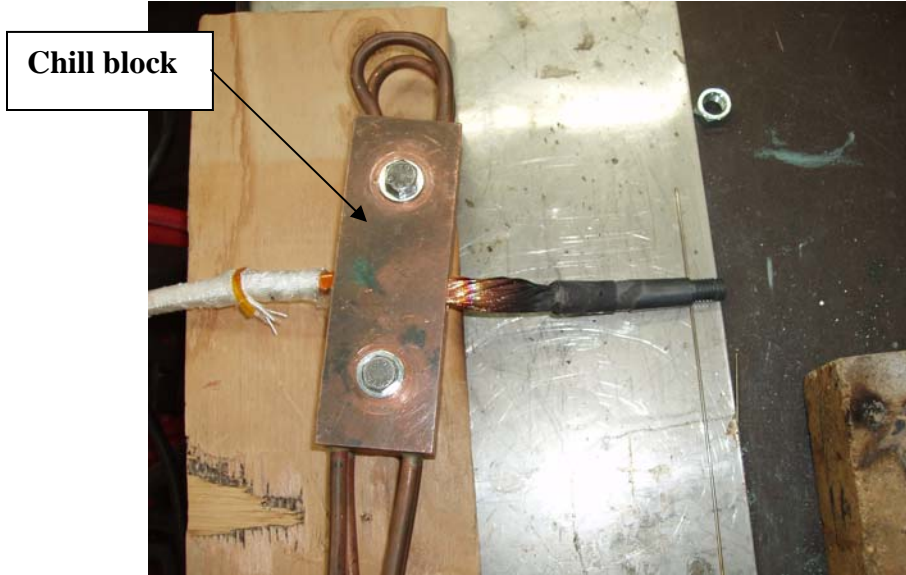
**Modular Coil C5 Lead Alteration  
NCR 3666**

**Series of photo's showing new lug adapter and sample braze test.**

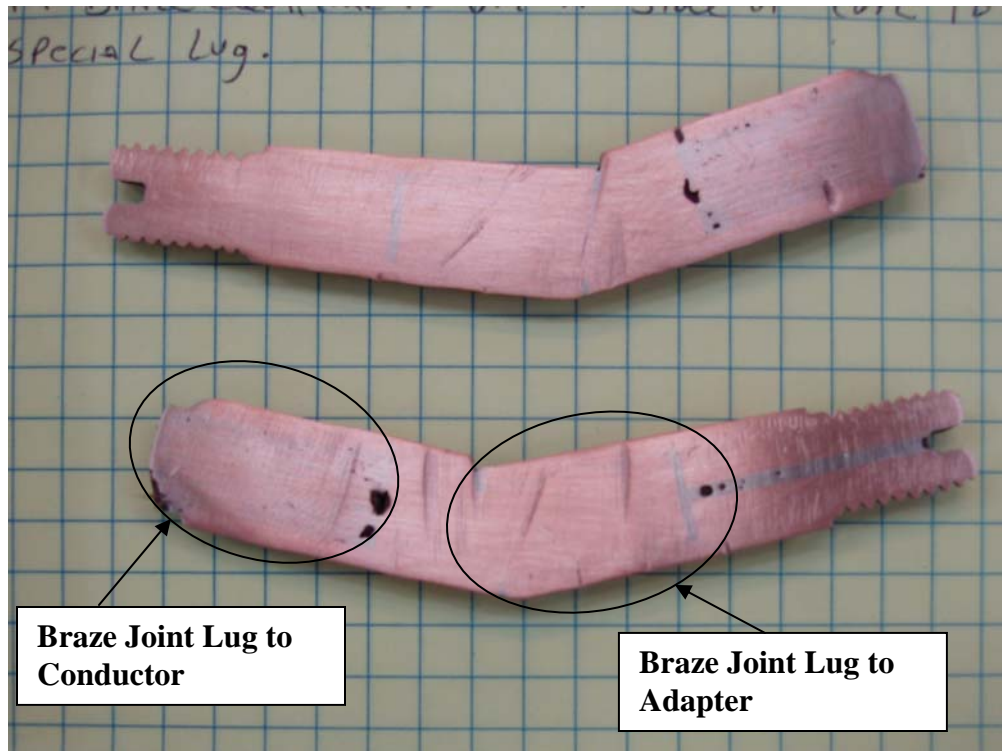


**Assembled Lug Adapter**

**Modular Coil C5 Lead Alteration  
NCR 3666**



**Post Brazing of Conductor to Adapter Lug Assembly**



**Cut Open Braze Sample**