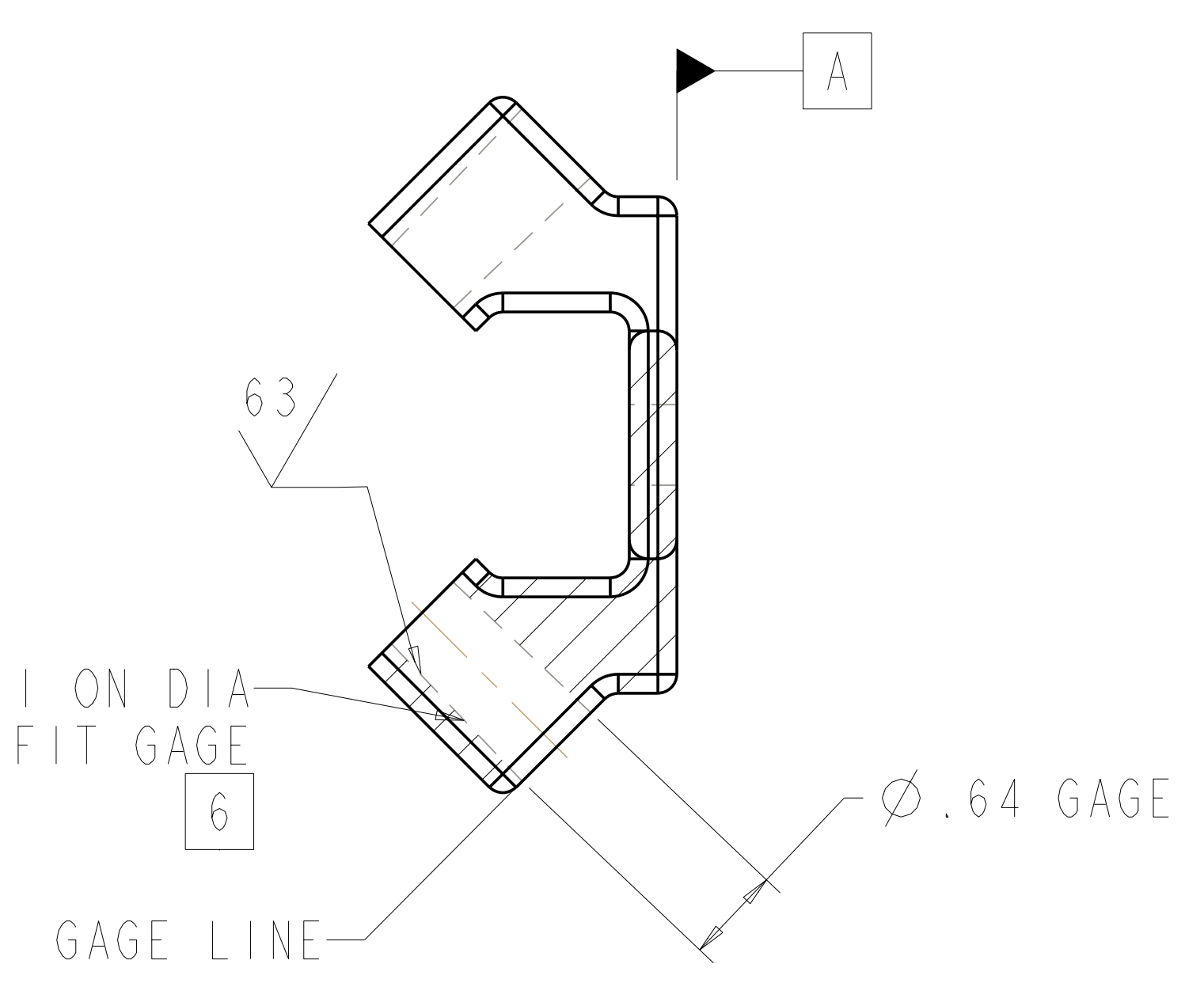
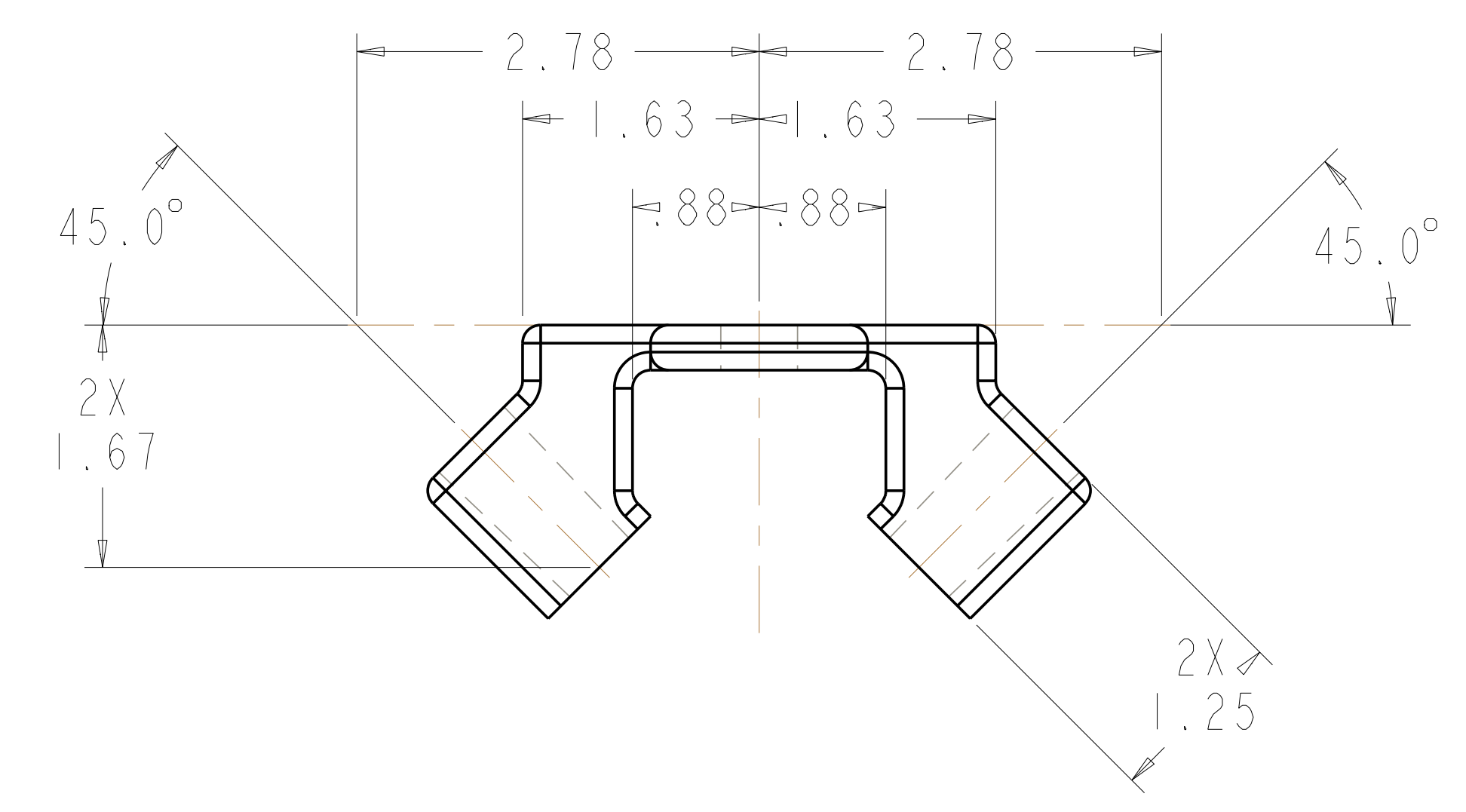
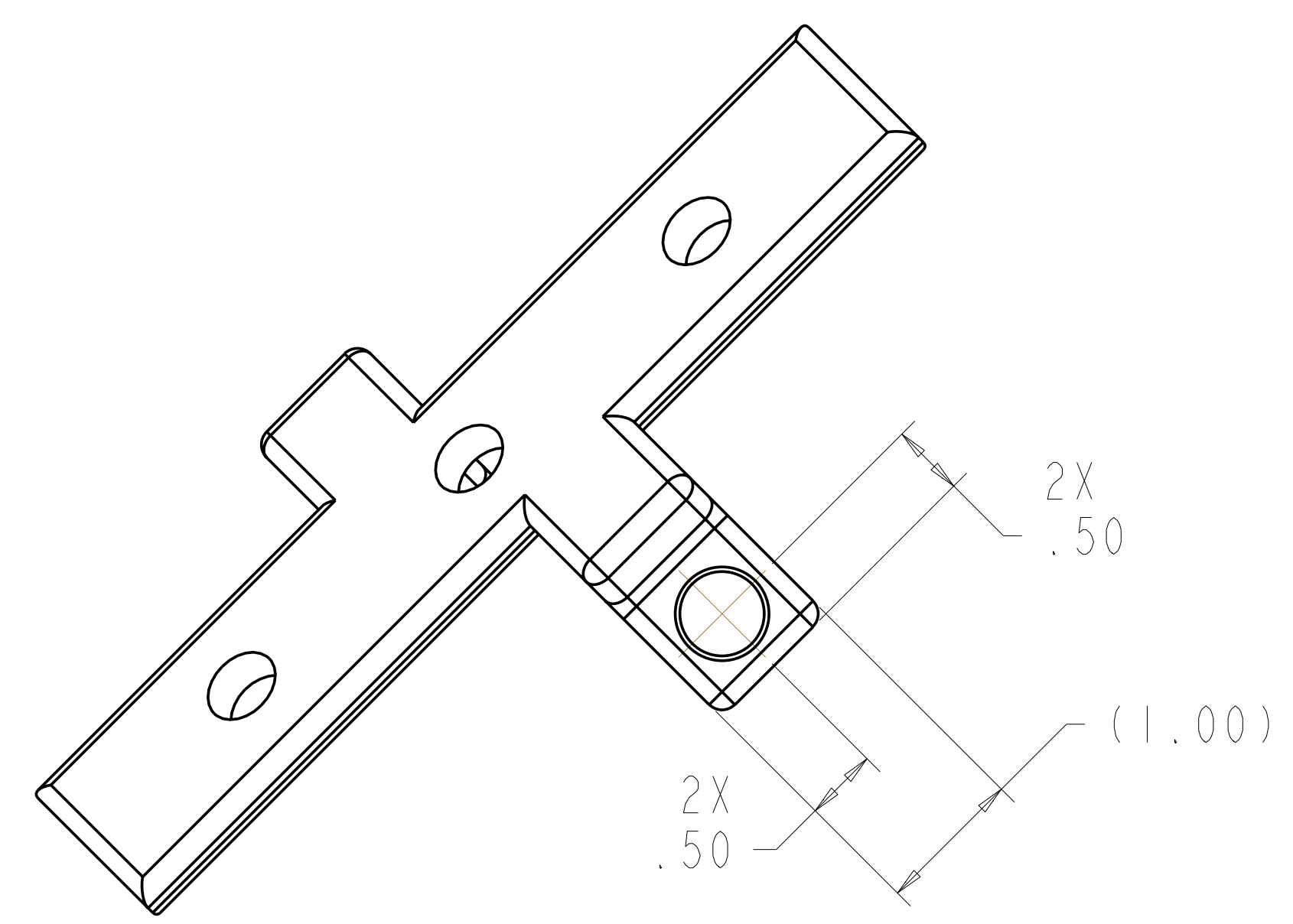
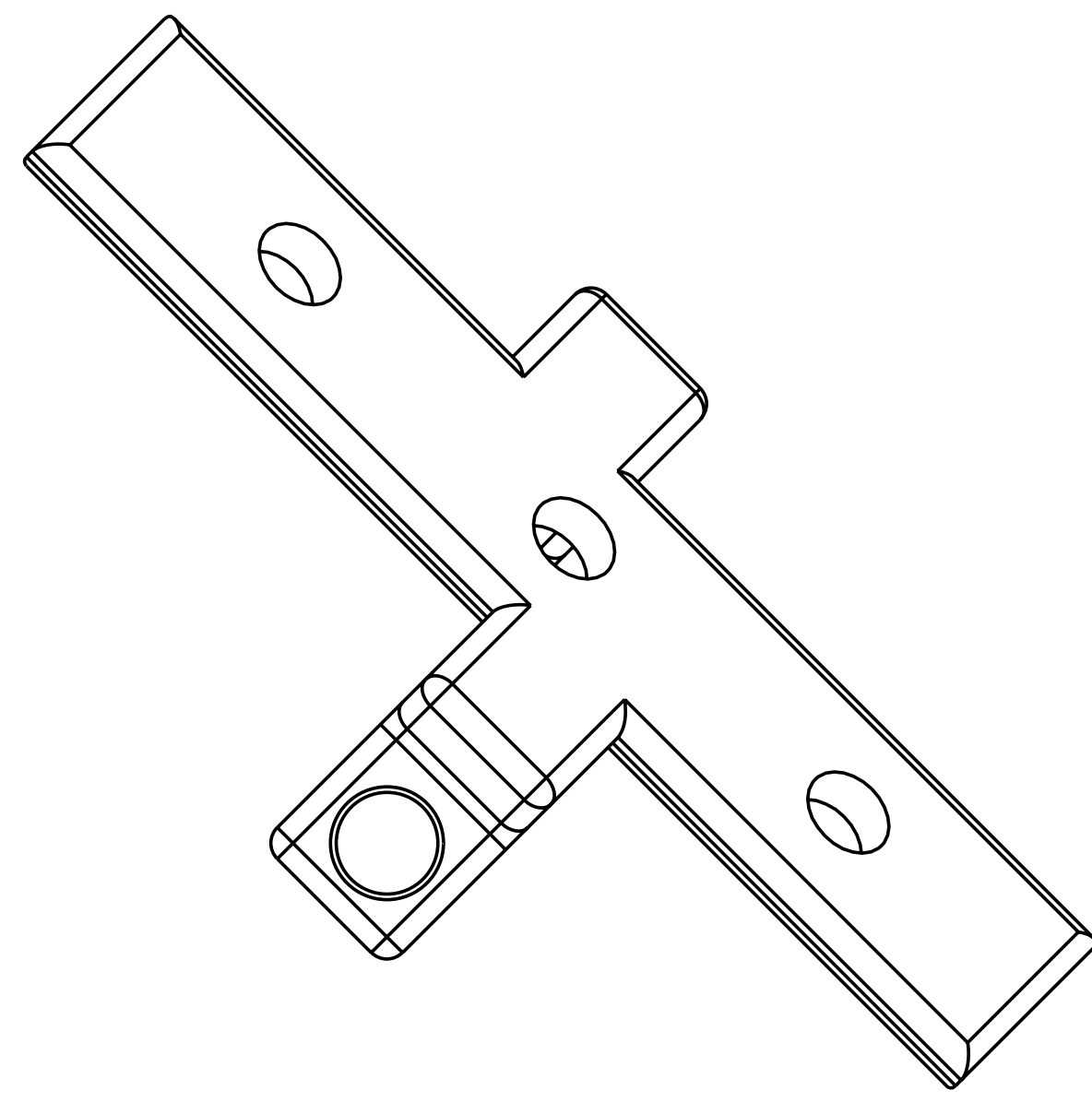
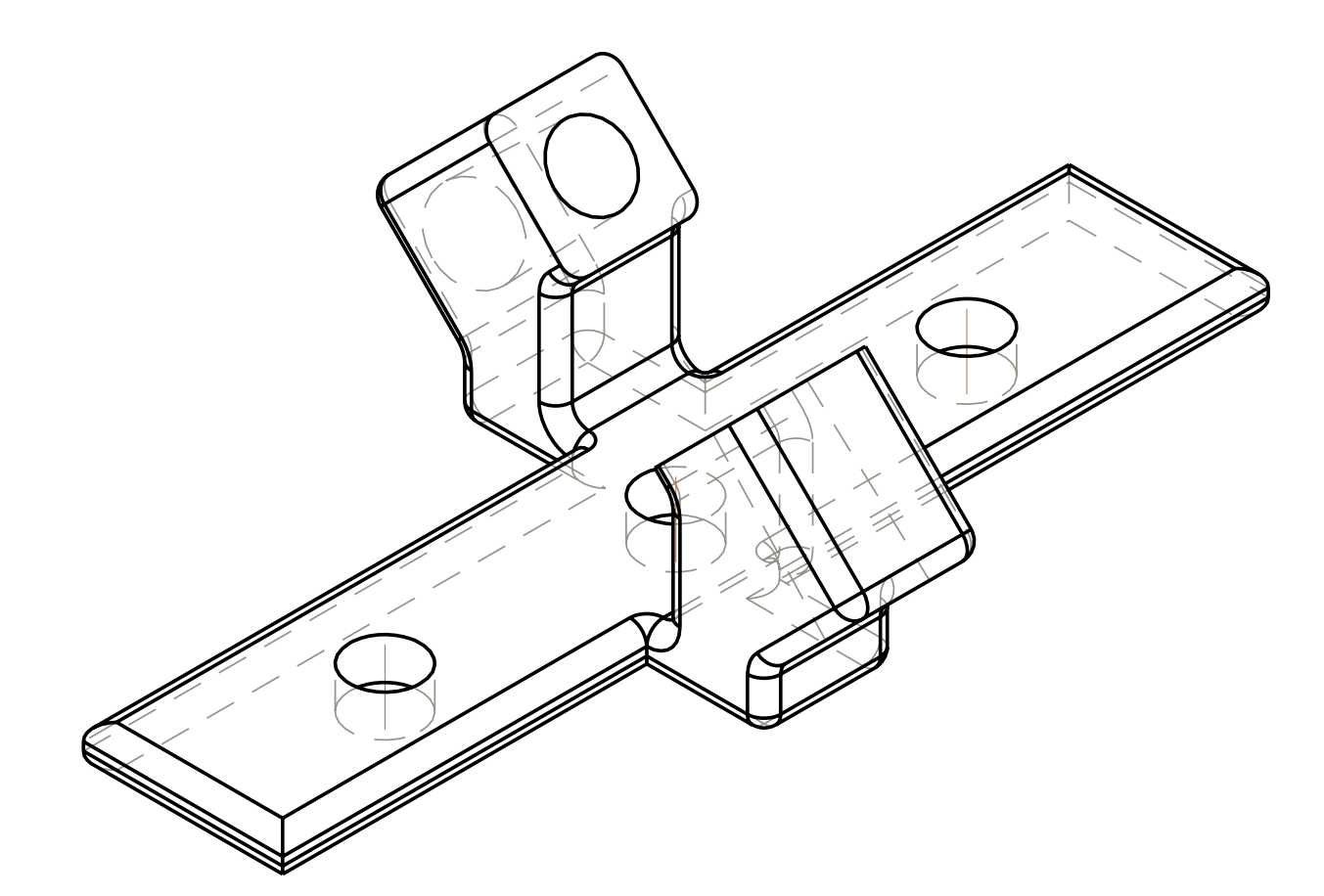
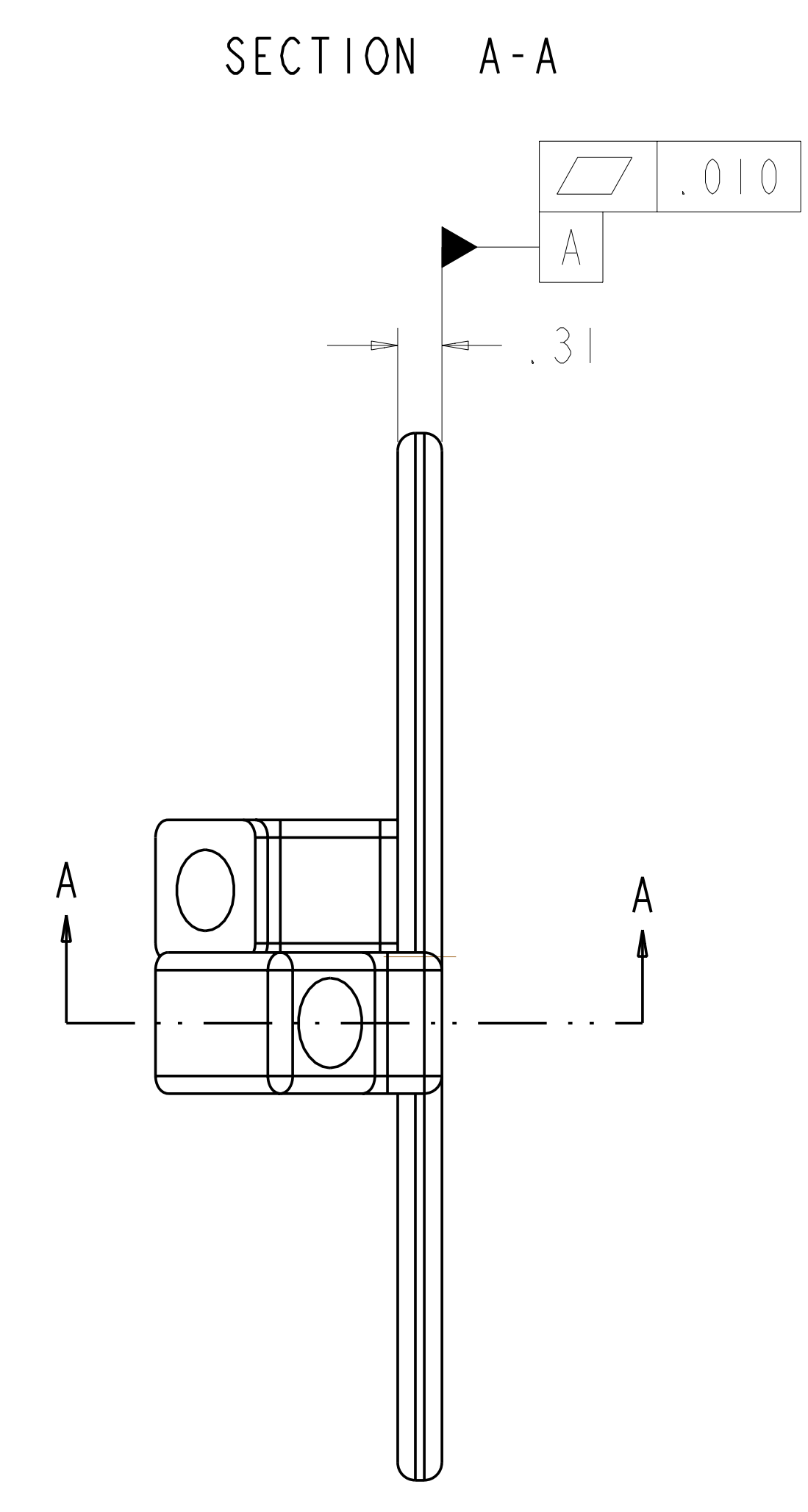
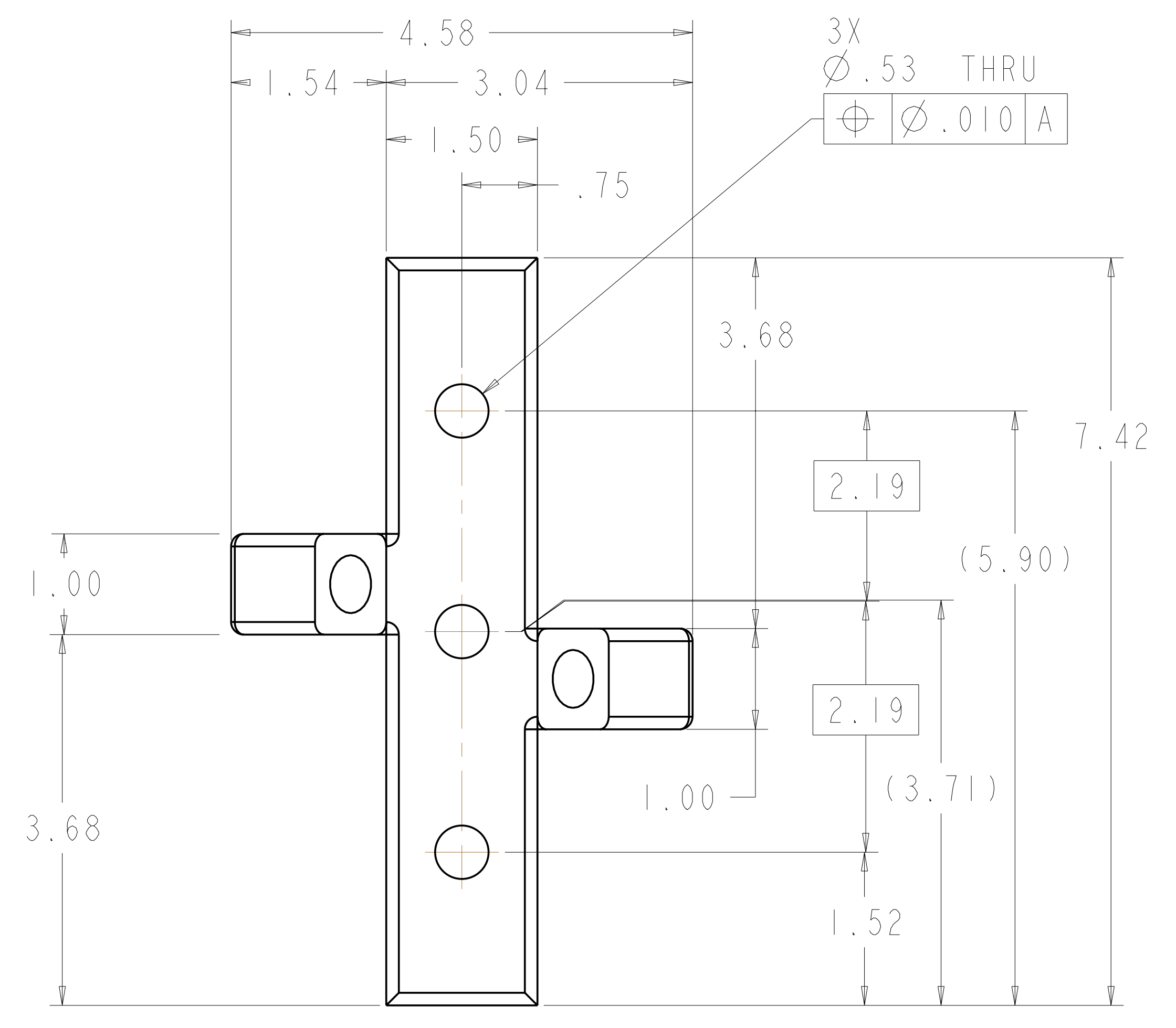


- NOTES:
1. INTERPRET DIMENSIONS AND TOLERANCES PER ANSI Y14.5M
  2. DIMENSIONS ARE IN INCHES
  3. DIMENSIONS APPLY AT ROOM TEMPERATURE. OPERATING TEMP 80 K.
  4. GEOMETRY IS DEFINED IN PRO ENGINEER CAD MODELS/FILES SEI42C-053.PRT
  5. DRAWING AND MODELS COMBINED DEFINE FINISHED MACHINED PART.
  6. SILVER PLATE 10 MICRON THICK PER ASTM B700 TYPE 1, GRADE C, CLASS S. APPLY NICKEL INTERMEDIATE LAYER >1 MICRON THICK IMMEDIATELY AFTER CLEANING BASE METAL AND BEFORE ELECTROPLATE.



**RELEASED FOR FABRICATION / INSTALLATION**  
 PPPL Drafting:



ISOMETRIC VIEW

next assy	AR	-1	TERMINAL JUMPER	OFHC COPPER (UNS C10200)	I
SEI42C-053	CAGE CODE	PART OR IDENTIFYING NO	NOMENCLATURE OR DESCRIPTION	MATERIAL / SPECIFICATION	FIND NO
		NEXT ASSEMBLY		PARTS LIST	

SCALE 1 : 1

REV	DESCRIPTION	BY	DATE	CHK	DEPT	DATE	PE	REQ	DATE	ORNL	DOE	DATE
0	INITIAL RELEASE	GLL	8-08	MJC			DEW					
	REVISION OR ISSUE PURPOSE											

SCALE NOTED		DES	05/05	UT-BATTELLE		Oak Ridge National Laboratory managed for the DEPARTMENT OF ENERGY under U.S. GOVERNMENT contract DE-AC05-00OR22725 UT-BATTELLE, LLC, Oak Ridge, Tennessee				
FRACTIONS		DRW	P FOGARTY	NATIONAL COMPACT STELLARATOR EXPERIMENT						
XX DECIMALS	±.01	CHK	G LOVETT	MODULAR COIL TYPE-C						
XXX DECIMALS	±.005	SECT	M COLE	TERMINAL JUMPER #3						
ANGLES	±0°15'	DEPT		DETAIL						
BREAK SHARP EDGES	06 MAX	PE	D WILLIAMSON	VERSION NO.	PLANT	BLDG	FL	SHT OF	TYPE	CLASS
FINISH	.125 UNLESS OTHERWISE SPECIFIED	REG		18	X-10	5700	3	1	I	S
		ORNL		RELEASE LEVEL						REV
		DOE		Fabrication						0

NO REPRESENTATION OR WARRANTY, EXPRESSED OR IMPLIED, IS MADE AS TO THE ACCURACY, COMPLETENESS OR USEFULNESS OF THE INFORMATION OR STATEMENTS CONTAINED IN THESE DRAWINGS, OR THAT THE USE OR DISCLOSURE OF ANY INFORMATION, APPARATUS, METHOD OR PROCESS DISCLOSED IN THESE DRAWINGS MAY NOT INFRINGE PRIVATE RIGHTS OF OTHERS. NO LIABILITY IS ASSUMED WITH RESPECT TO THE USE OF, OR FOR DAMAGES RESULTING FROM THE USE OF, ANY INFORMATION, APPARATUS, METHOD OR PROCESS DISCLOSED IN THESE DRAWINGS. DRAWINGS MADE AVAILABLE FOR INFORMATION TO BIDDER ARE NOT TO BE USED FOR OTHER PURPOSES, AND ARE TO BE RETURNED UPON REQUEST OF THE FORWARDING CONTRACTOR.

**P** THIS DRAWING PRODUCED ON PRO-ENGINEER

H  
G  
F  
E  
D  
C  
B  
A