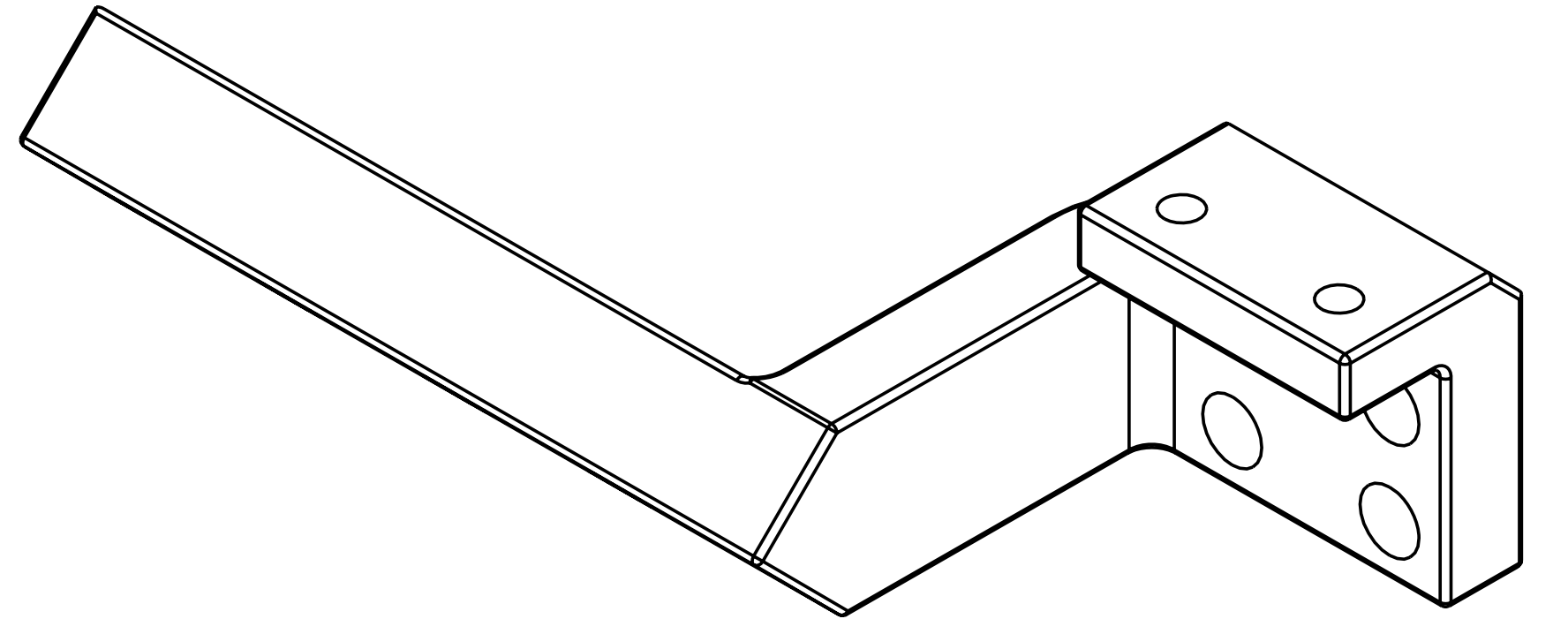
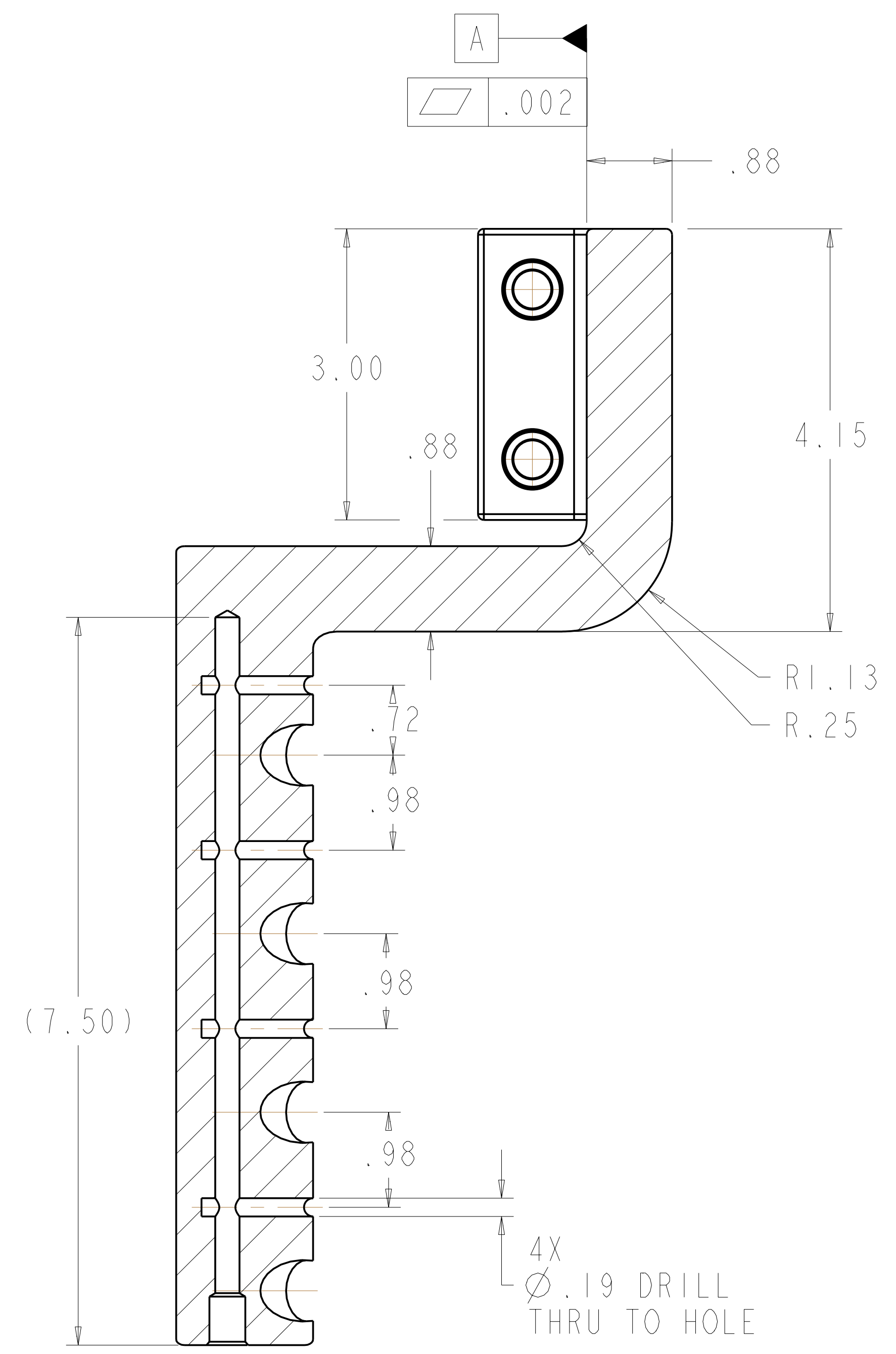
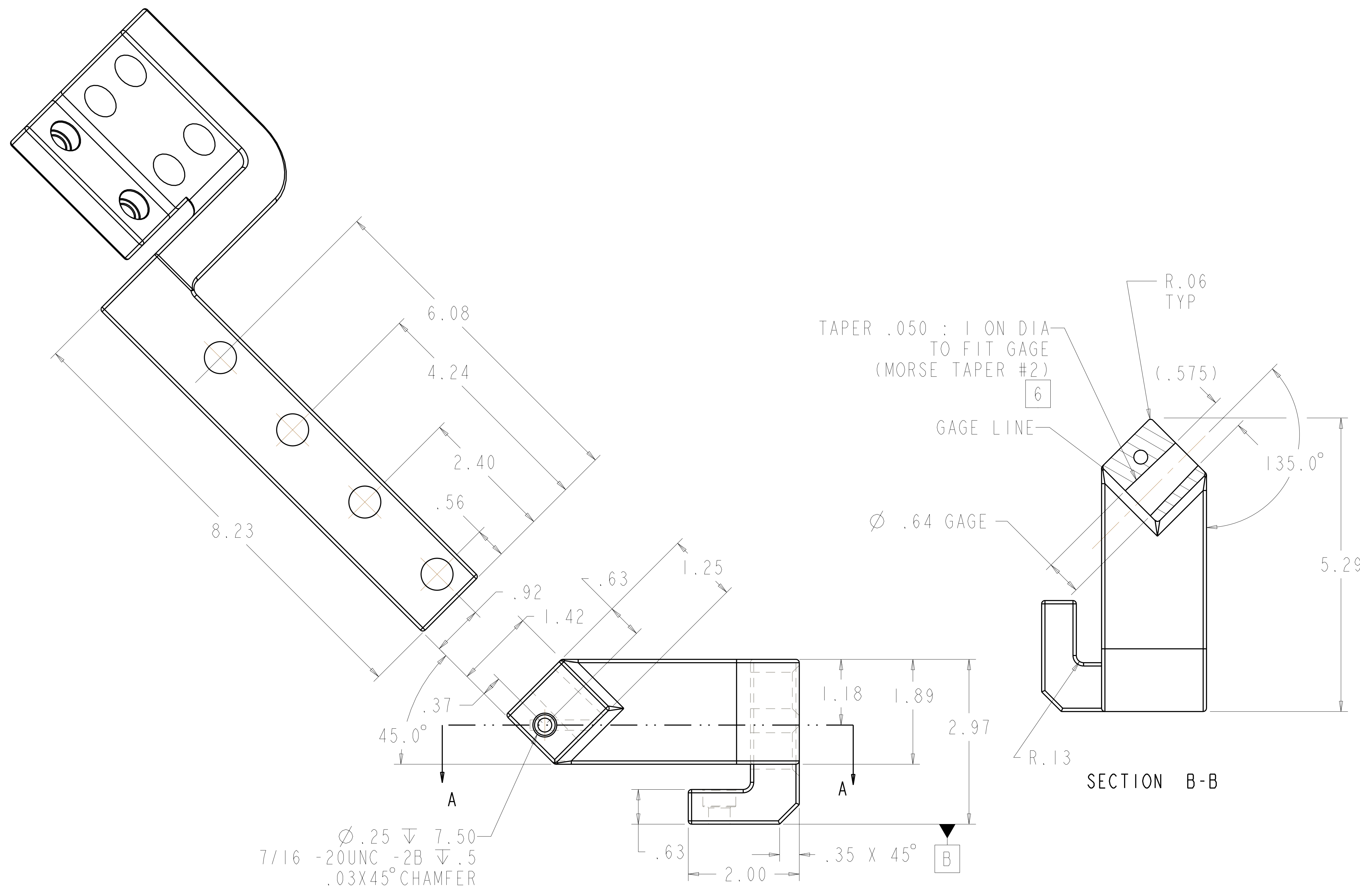


- NOTES:
1. INTERPRET DIMENSIONS AND TOLERANCES PER ANSI Y14.5M
 2. DIMENSIONS ARE IN INCHES
 3. DIMENSIONS APPLY AT ROOM TEMPERATURE. OPERATING TEMP 80 K.
 4. GEOMETRY IS DEFINED IN PRO ENGINEER CAD MODELS/FILES SEI42C-055.PRT
 5. DRAWING AND MODELS COMBINED DEFINE FINISHED MACHINED PART.
 6. SILVER PLATE 10 MICRON THICK PER ASTM B700 TYPE 1, GRADE C, CLASS S. APPLY NICKEL INTERMEDIATE LAYER >1 MICRON THICK IMMEDIATELY AFTER CLEANING BASE METAL AND BEFORE ELECTROPLATE. DIMENSIONS APPLY AFTER PLATING.
 7. MARK DRAWING NO., ITEM NO., AND "SIDE A" ON PART IN APPROX .25 HIGH LEGIBLE CHARACTERS AT LOCATION SHOWN WITH STAMP OR VIBRO ETCH.

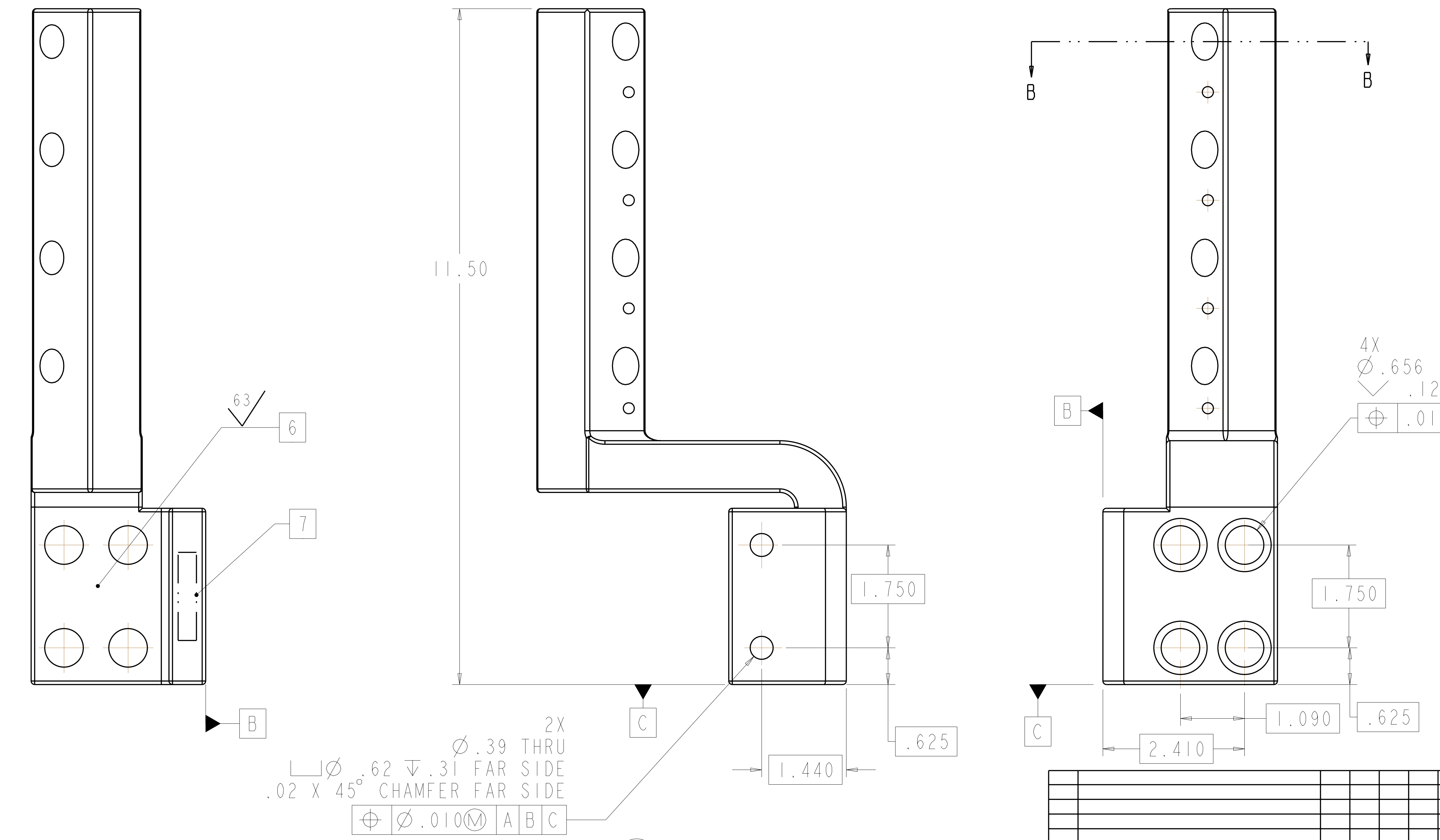


RELEASED FOR FABRICATION / INSTALLATION
 PPPL Drafting:

REV	DESCRIPTION	BY	DATE	CHK	DEPT	DATE	PE	REG	DATE	ORNL	DOE	DATE
0	INITIAL RELEASE	GLL	B-05		DEW							
1	REVISION OR ISSUE PURPOSE											

next assy	AR	-1	TERMINAL LUG BLOCK	OFHC COPPER (UNS C10100 OR C10200)	I
next assy	CAGE CODE	PART OR IDENTIFYING NO	NOMENCLATURE OR DESCRIPTION	MATERIAL / SPECIFICATION	FIND NO
SEI42C-055					
		NEXT ASSEMBLY			

PPPL DRFT J SIEGEL 05/05



SCALE NOTED	DES	05/05	UT-BATTELLE	Oak Ridge National Laboratory managed for the DEPARTMENT OF ENERGY under U.S. GOVERNMENT contract DE-AC05-00OR22725 UT-BATTELLE, LLC. Oak Ridge, Tennessee
TOLERANCES UNLESS OTHERWISE SPECIFIED	DRW	G LOVETT 05/05	NATIONAL COMPACT STELLARATOR EXPERIMENT	
FRACTIONS ±.01	CHK	M COLE 05/05	MODULAR COIL TYPE-C	
XX DECIMALS ±.005	SECT		SHORT TERMINAL LUG	
XXX DECIMALS ±.0015	DEPT		DETAIL	
ANGLES ±0°15'	PE	D WILLIAMSON 05/05	PPPL DRFT J SIEGEL 05/05	VERSION NO. 23
BREAK SHARP EDGES .06 MAX	CR		PLANT X-10	BLDG 5700
FINISH .125 UNLESS OTHERWISE SPECIFIED	PJ		FL 3	SHT 1
	REG		TYPE I	CLASS S
	REV		RELEASE LEVEL Fabrication	REV 0

NO REPRESENTATION OR WARRANTY, EXPRESSED OR IMPLIED, IS MADE AS TO THE ACCURACY, COMPLETENESS OR USEFULNESS OF THE INFORMATION OR STATEMENTS CONTAINED IN THESE DRAWINGS, OR THAT THE USE OR DISCLOSURE OF ANY INFORMATION, APPARATUS, METHOD OR PROCESS DISCLOSED IN THESE DRAWINGS MAY NOT INFRINGE PRIVATE RIGHTS OF OTHERS. NO LIABILITY IS ASSUMED WITH RESPECT TO THE USE OF, OR FOR DAMAGES RESULTING FROM THE USE OF, ANY INFORMATION, APPARATUS, METHOD OR PROCESS DISCLOSED IN THESE DRAWINGS. DRAWINGS MADE AVAILABLE FOR INFORMATION TO BIDDER ARE NOT TO BE USED FOR OTHER PURPOSES, AND ARE TO BE RETURNED UPON REQUEST OF THE FORWARDING CONTRACTOR.

P THIS DRAWING PRODUCED ON PRO-ENGINEER

I SCALE 1:1

H
G
F
E
D
C
B
A