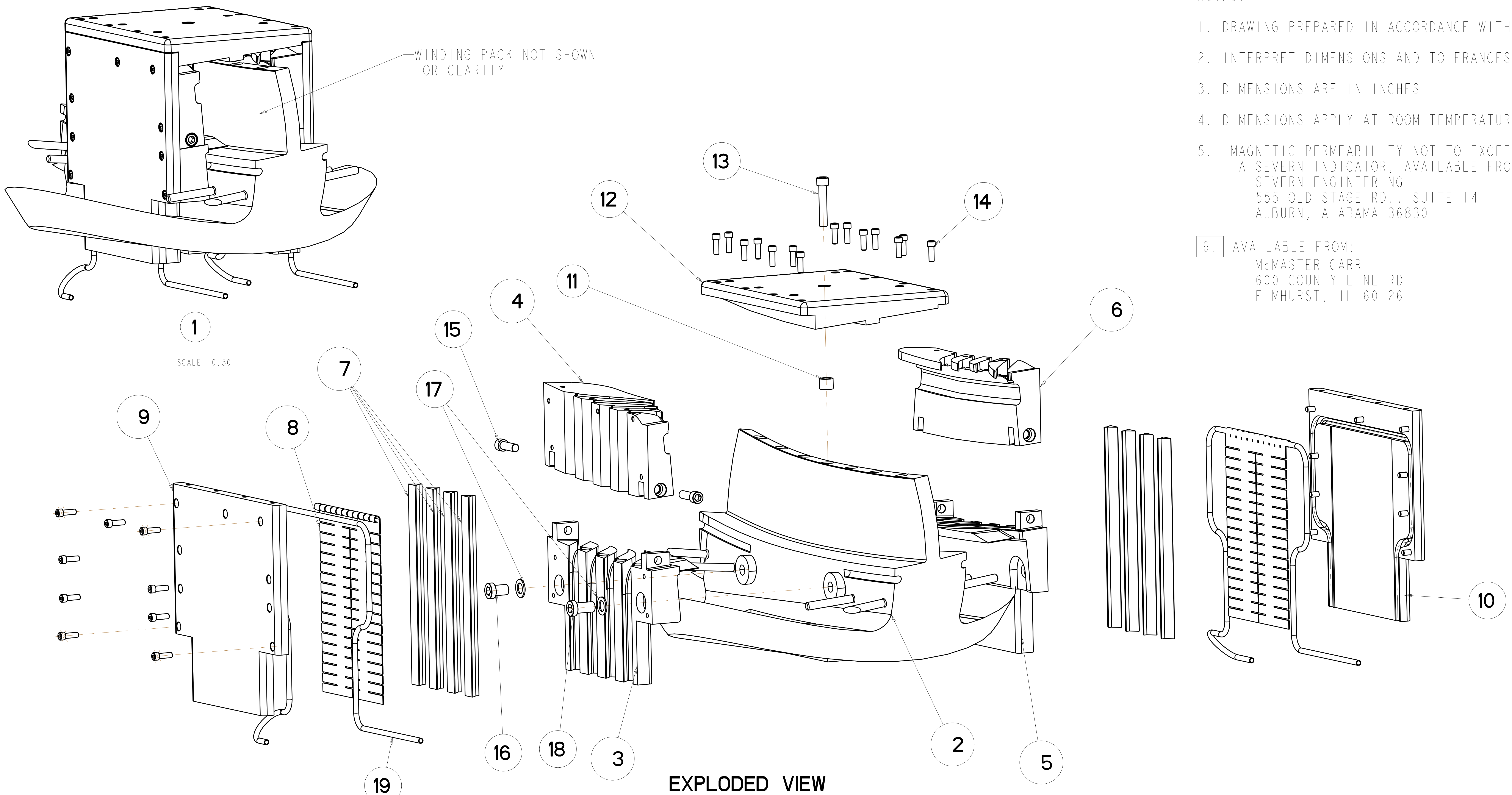
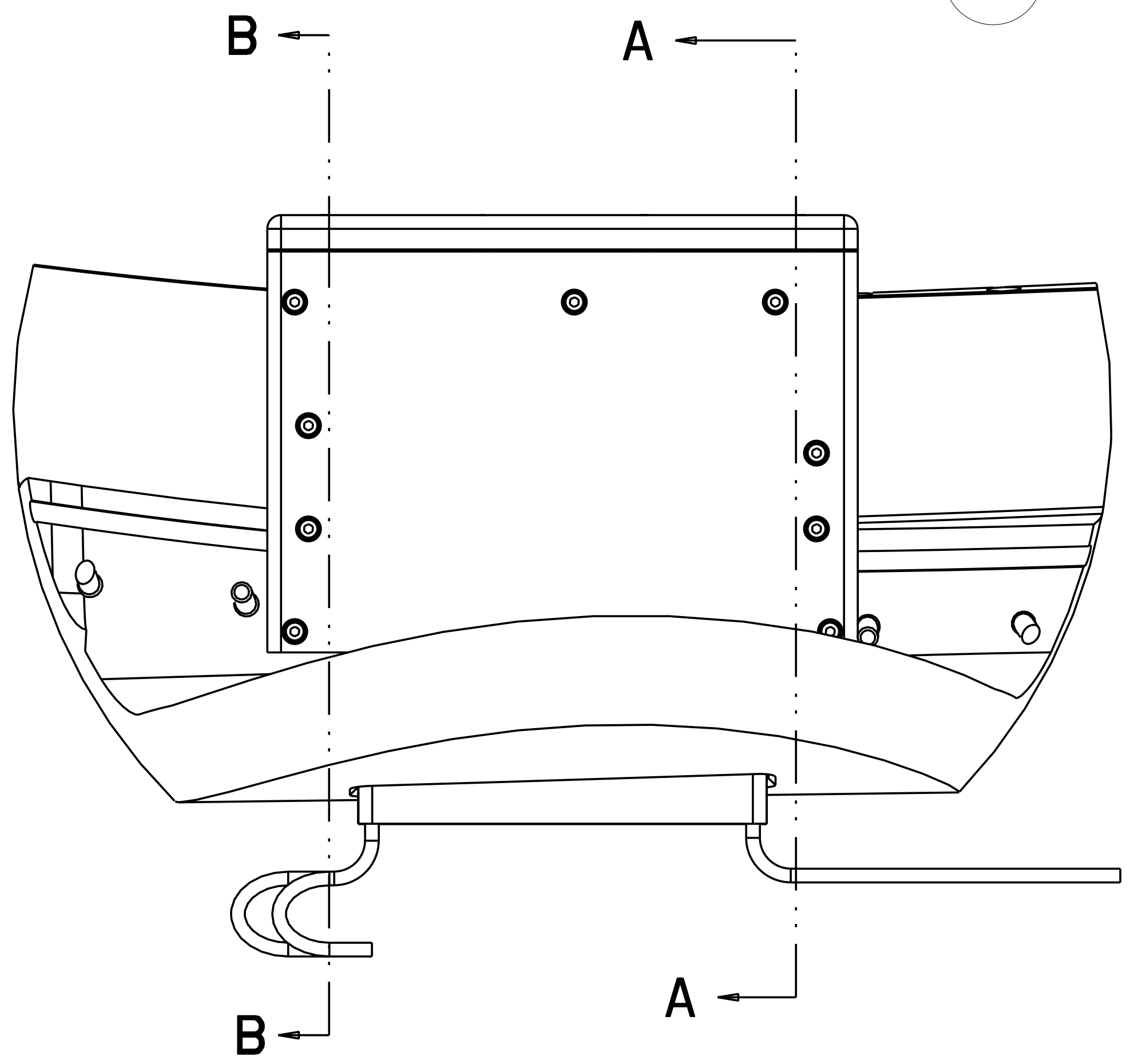


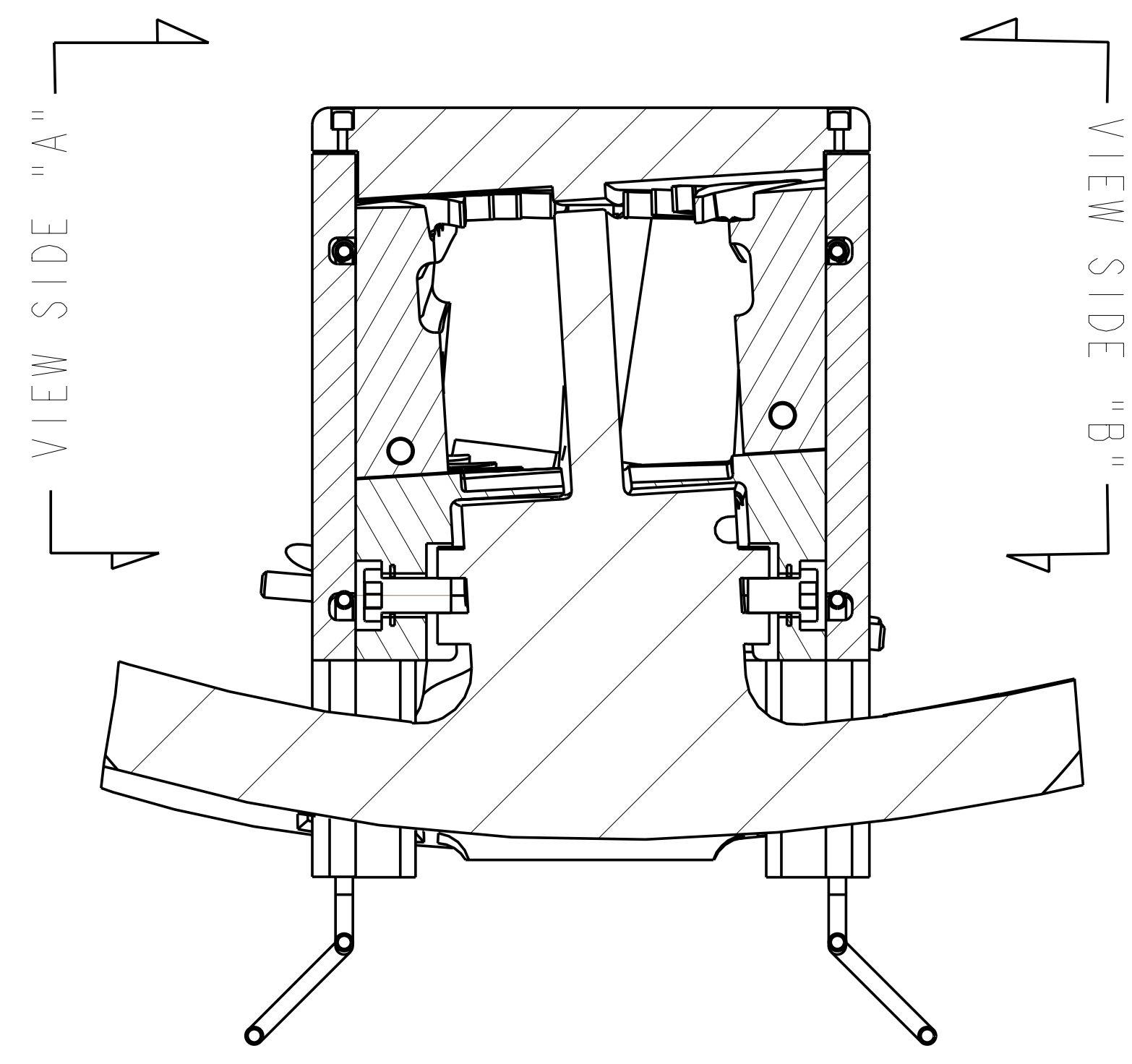
- NOTES:
1. DRAWING PREPARED IN ACCORDANCE WITH ASME Y14.100-2000.
 2. INTERPRET DIMENSIONS AND TOLERANCES PER ANSI Y14.5M
 3. DIMENSIONS ARE IN INCHES
 4. DIMENSIONS APPLY AT ROOM TEMPERATURE. OPERATING TEMP 80 K.
 5. MAGNETIC PERMEABILITY NOT TO EXCEED 1.02 AS TESTED BY A SEVERN INDICATOR, AVAILABLE FROM:
 SEVERN ENGINEERING
 555 OLD STAGE RD., SUITE 14
 AUBURN, ALABAMA 36830
 6. AVAILABLE FROM:
 McMASTER CARR
 600 COUNTY LINE RD
 ELMHURST, IL 60126
- CAGE CODE: 39428
 PHONE: 630-833-0300



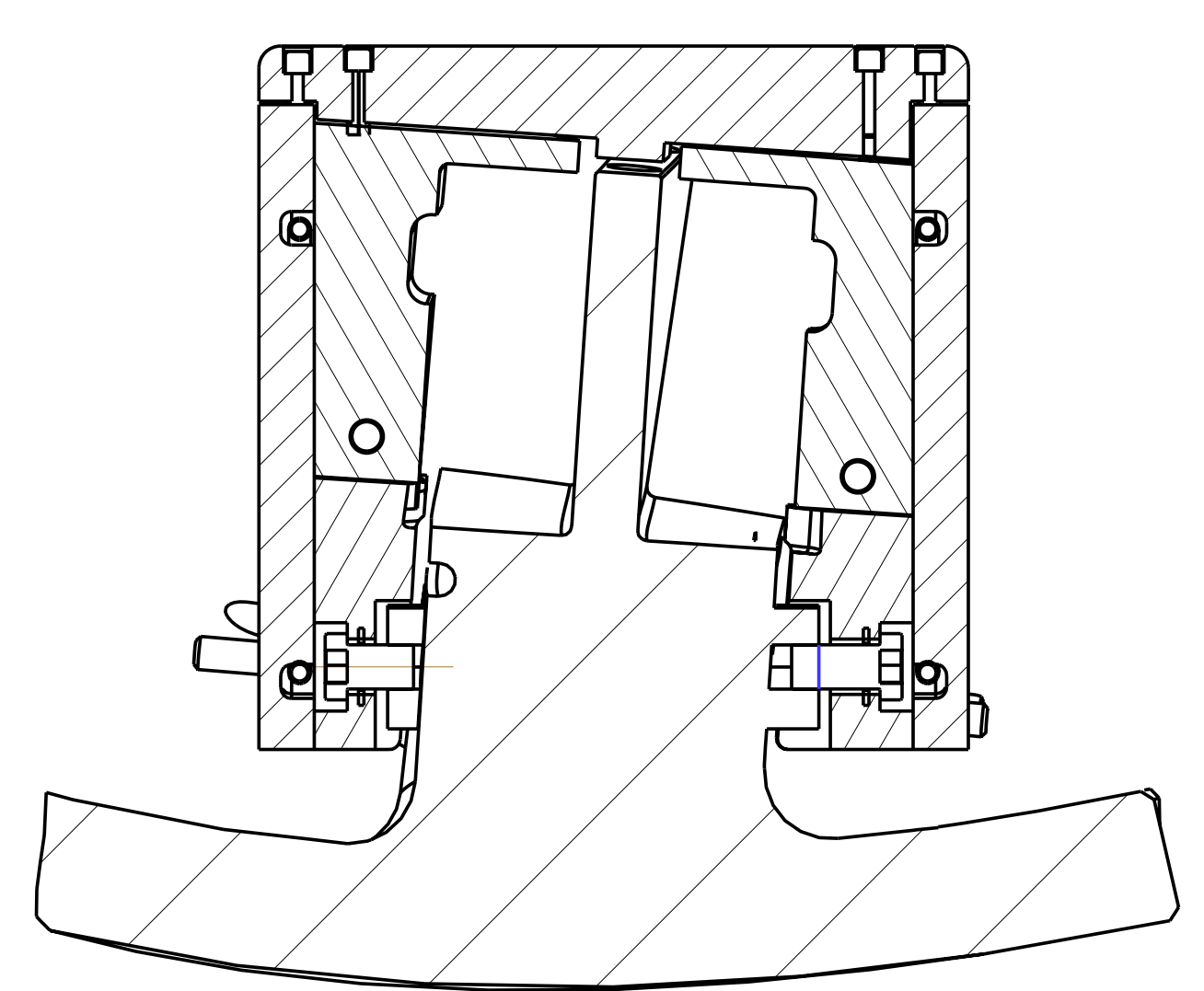
EXPLODED VIEW
 SCALE 0.500



SCALE 0.500



SECTION A-A



SECTION B-B

REV	AR	DESCRIPTION	MATERIAL	SPECIFICATION	FIND NO
6	2	39428 92185A712 SCREW, 1/2-13 UNC X 1.0 LNG SOC HD CAP	SS UNS S31600		18
	4	-17 WASHER .53 ID .875 OD .06 THK FLAT	SS UNS S31600	--	17
6	2	39428 92185A711 SCREW 1/2-13UNC X .75 LNG SOC HD CAP	SS UNS S31600	--	16
6	4	39428 92185A626 SCREW 3/8-16 UNC X 1.25 SOC HD CAP	SS UNS S31600	--	15
6	32	39428 92185A540 SCREW 1/4-20 UNC X .75 LNG SOC HD CAP	SS UNS S31600	--	14
6	1	39428 92185A632 SCREW 3/8-16 UNC X 2 LNG SOC HD CAP	SS UNS S31600		13
	1	SE142C-223 TOP POSITIONING BUSHING			12
	1	SE142C-184 TYPE-C LEADS ENCLOSURE TOP PLATE			11
	1	SE142C-221 TYPE "C" SIDE "B" COVER PLATE			10
	1	SE142C-220 TYPE "C" SIDE "A" COVER PLATE			9
	2	SE142C-183 LEADS AREA CHILL PLATE			8
	AR	SE142C-226 LEADS FILLER STRIPS			7
	1	SE142C-137 TYPE "C" SIDE "B" UPPER BLOCK			6
	1	SE142C-135 TYPE "C" SIDE "B" LOWER BLOCK			5
	1	SE142C-136 TYPE "C" SIDE "A" UPPER BLOCK			4
	1	SE142C-134 TYPE "C" SIDE "A" LOWER BLOCK			3
	1	SE141-123 MCWF TYPE "C" WELDMENT			2
	1	-1 LEADS BLOCK ASSEMBLY			1

SE140-103 CAGE CODE PART OR IDENTIFYING NO NOMENCLATURE OR DESCRIPTION MATERIAL SPECIFICATION FIND NO
 ← NEXT ASSEMBLY PARTS LIST

NO REPRESENTATION OR WARRANTY, EXPRESSED OR IMPLIED, IS MADE AS TO THE ACCURACY, COMPLETENESS OR USEFULNESS OF THE INFORMATION OR STATEMENTS CONTAINED IN THESE DRAWINGS, OR THAT THE USE OR DISCLOSURE OF ANY INFORMATION, APPARATUS, METHOD OR PROCESS DISCLOSED IN THESE DRAWINGS MAY NOT INFRINGE PRIVATE RIGHTS OF OTHERS. NO LIABILITY IS ASSUMED WITH RESPECT TO THE USE OF, OR FOR DAMAGES RESULTING FROM THE USE OF, ANY INFORMATION, APPARATUS, METHOD OR PROCESS DISCLOSED IN THESE DRAWINGS. DRAWINGS MADE AVAILABLE FOR INFORMATION TO BIDDER ARE NOT TO BE USED FOR OTHER PURPOSES, AND ARE TO BE RETURNED UPON REQUEST OF THE FORWARDING CONTRACTOR.

P THIS DRAWING PRODUCED ON PRO-ENGINEER

REV	DESCRIPTION	BY	DATE	CHK	DEPT	DATE	PE	REQ	DATE	ORNL	DOE	DATE

SCALE NOTED

DES: D WILLIAMSON	9-7-05
DRW: G LOVETT	9-07-05
CHK:	
SECT:	
DEPT:	
PE: D WILLIAMSON	09-05
CR:	
PJ:	
RED:	
PPPL DRFT J SIEGLE	09-05

Oak Ridge National Laboratory
 managed for the DEPARTMENT OF ENERGY under
 U.S. GOVERNMENT contract DE-AC05-00OR22725
 UT-BATTELLE, LLC, Oak Ridge, Tennessee

UT-BATTELLE

NATIONAL COMPACT STELLARATOR EXPERIMENT

LEADS WINDING BLOCKS ASSEMBLY

VERSION NO.	PLANT	BLDG	FL	SHT OF	TYPE	CLASS
10	X-10	5700	3	1	S	U
RELEASE LEVEL	SE142C-080					REV
WIP						0