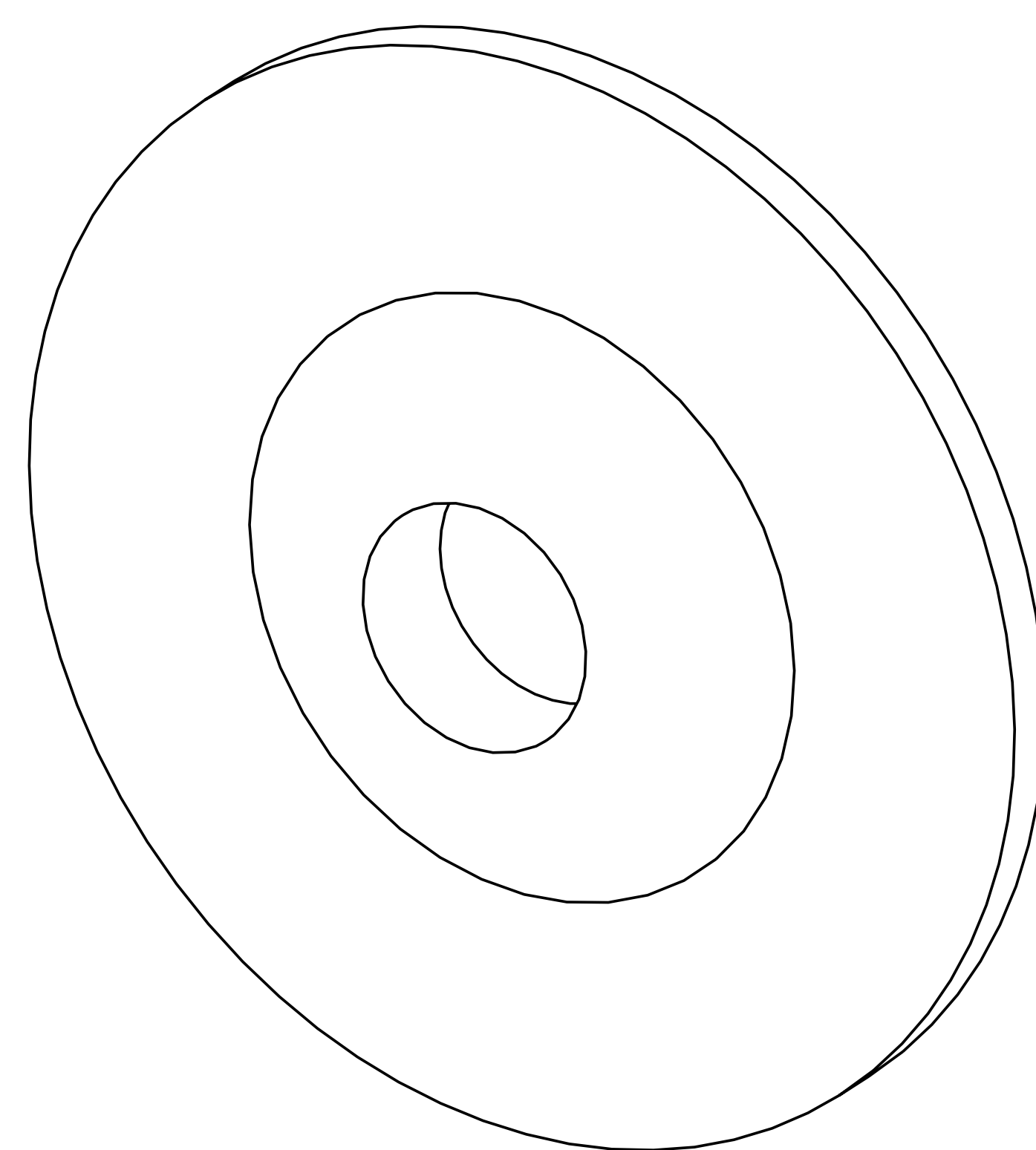


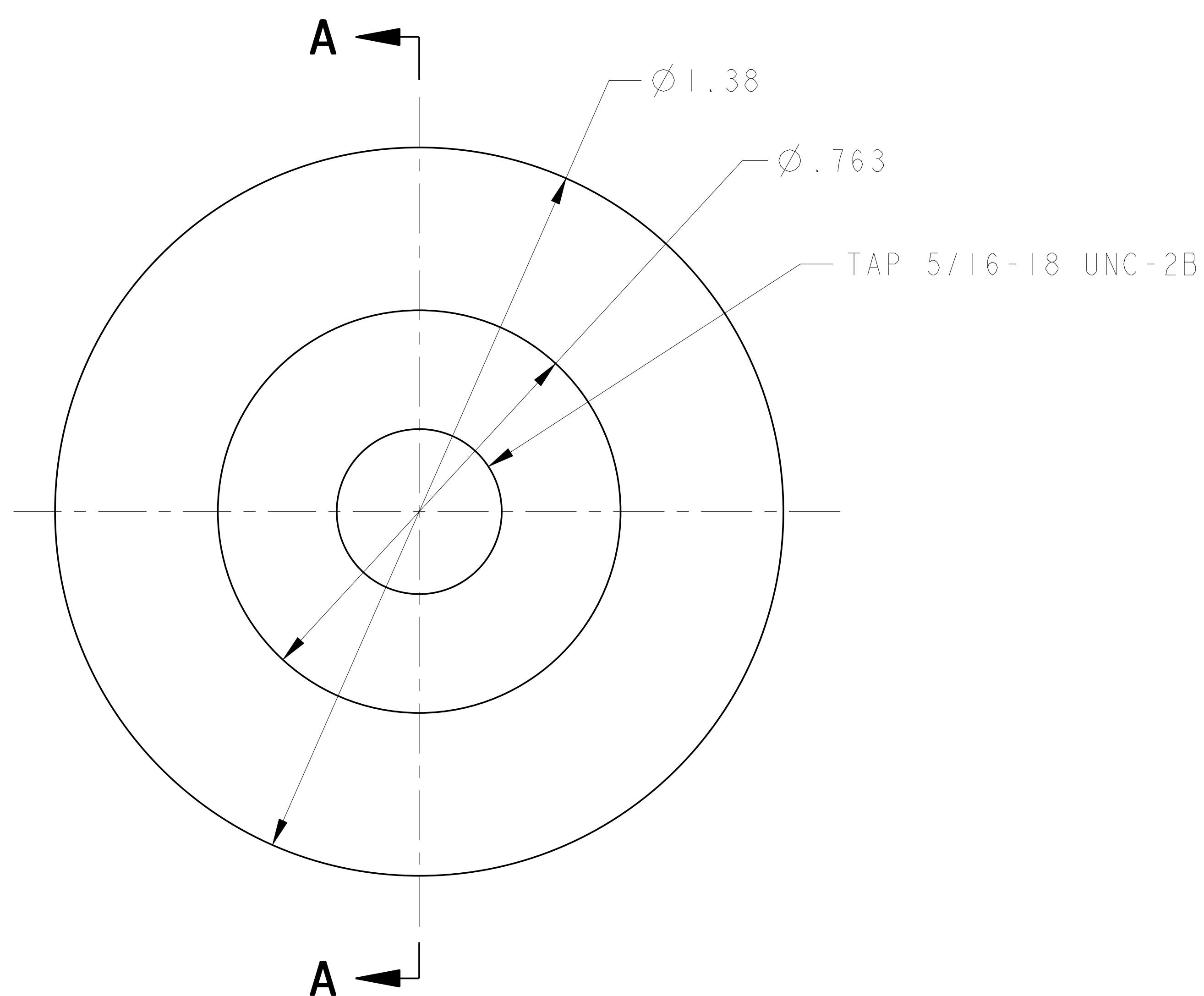
NOTES:

1. DRAWING PREPARED IN ACCORDANCE WITH ASME Y14.100.
2. INTERPRET DIMENSIONS AND TOLERANCES PER ANSI Y14.5M
3. DIMENSIONS ARE IN INCHES
4. DIMENSIONS APPLY AT ROOM TEMPERATURE. OPERATING TEMP 80 K
5. GEOMETRY IS DEFINED IN PRO ENGINEER CAD MODELS/FILES
6. DRAWING AND MODELS COMBINED DEFINE FINISHED MACHINED PART
7. MAGNETIC PERMEABILITY SHALL NOT EXCEED 1.02 AS TESTED BY A SEVERN-TYPE INDICATOR. AVAILABLE FROM:

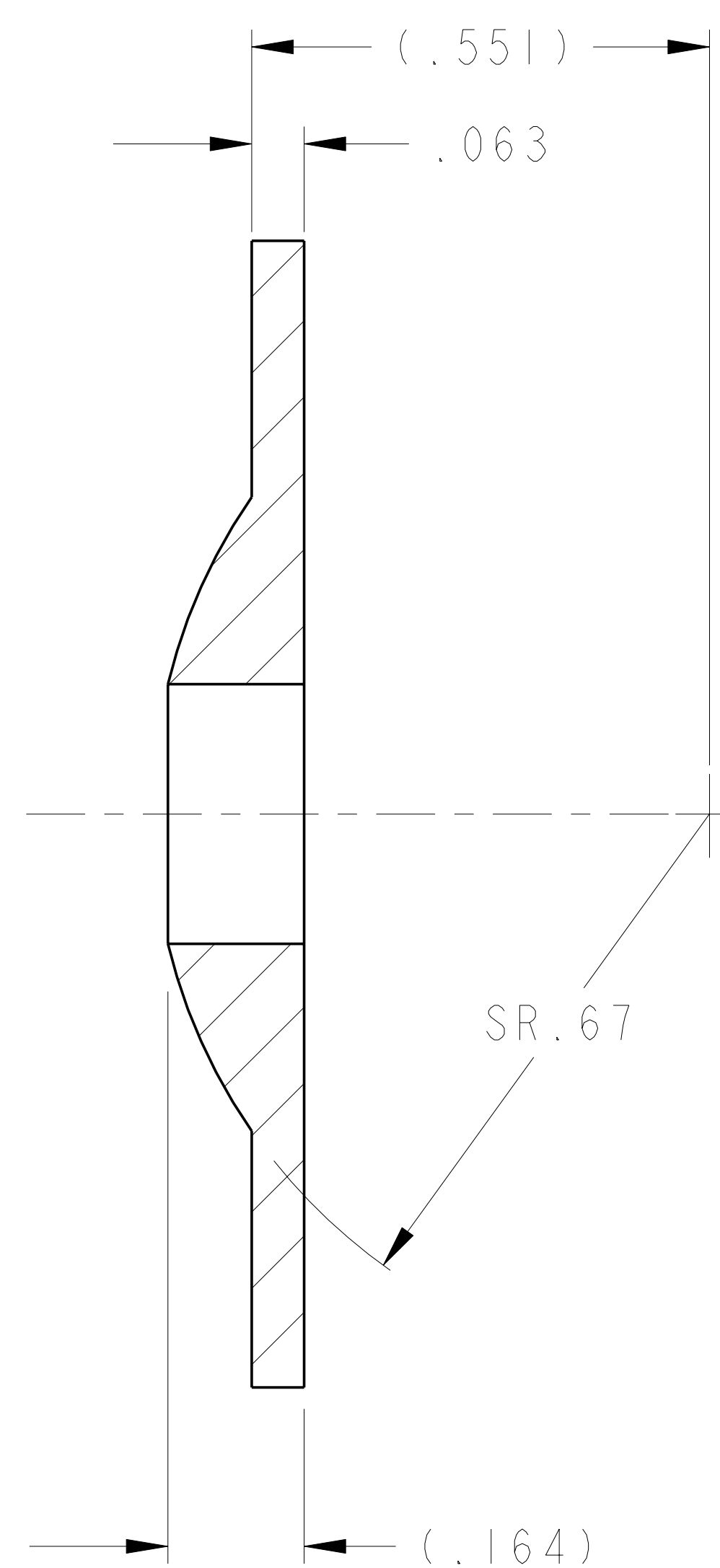
SEVERN ENGINEERING COMPANY
 555 OLD STAGE ROAD SUITE 14
 AUBURN, ALABAMA 36830



ISOMETRIC VIEW



1 WASHER, SPHERICAL, CONVEX



SECTION A-A

**RELEASED FOR
 FABRICATION / INSTALLATION**
 PPPL Drafting:

7	AR	X	-1	WASHER, SPHERICAL, CONVEX	UNS S31600		I
SE142C-273	CAGE CODE	PART OR IDENTIFYING NO	NOMENCLATURE OR DESCRIPTION	MATERIAL	SPECIFICATION	FIND NO	
			← NEXT ASSEMBLY	PARTS LIST			

NO REPRESENTATION OR WARRANTY, EXPRESSED OR IMPLIED, IS MADE AS TO THE ACCURACY, COMPLETENESS OR USEFULNESS OF THE INFORMATION OR STATEMENTS CONTAINED IN THESE DRAWINGS, OR THAT THE USE OR DISCLOSURE OF ANY INFORMATION, APPARATUS, METHOD OR PROCESS DISCLOSED IN THESE DRAWINGS MAY NOT INFRINGE PRIVATE RIGHTS OF OTHERS. NO LIABILITY IS ASSUMED WITH RESPECT TO THE USE OF, OR FOR DAMAGES RESULTING FROM THE USE OF, ANY INFORMATION, APPARATUS, METHOD OR PROCESS DISCLOSED IN THESE DRAWINGS. DRAWINGS MADE AVAILABLE FOR INFORMATION TO BIDDER ARE NOT TO BE USED FOR OTHER PURPOSES, AND ARE TO BE RETURNED UPON REQUEST OF THE FORWARDING CONTRACTOR.

P THIS DRAWING PRODUCED ON PRO-ENGINEER

REV	DESCRIPTION	BY	DATE	CHK	DEPT	DATE	PE	REQ	DATE	DRNL	DOE	DATE
	REVISION OR ISSUE PURPOSE											

SCALE 6	DES PAUL MILLER 4-12-04	UT-BATTELLE <small>Oak Ridge National Laboratory managed for the DEPARTMENT OF ENERGY under U.S. GOVERNMENT contract DE-AC05-00OR22725 UT-BATTELLE, LLC, Oak Ridge, Tennessee</small> NATIONAL COMPACT STELLARATOR EXPERIMENT
TOLERANCES UNLESS OTHERWISE SPECIFIED	DRW PAUL MILLER 4-15-04	
FRACTIONS	CHK TOM HARGROVE 8-26-05	
XX DECIMALS ±.01	DEPT :	
XXX DECIMALS ±.005	PE D WILLIAMSON 8-26-05	VERSION NO. 5
ANGLES ±0°15'	CR :	PLANT X-10
BREAK SHARP EDGES .06 MAX	PJ :	BLDG 5700
FINISH .125 UNLESS OTHERWISE SPECIFIED	RED :	FL 3
	PPPL DRFT J SIEGLE 8-26-05	SHT OF 1
		TYPE I
		CLASS U
		REV 0
		RELEASE LEVEL Fabrication
		SE142C-273

SE142C-273

A