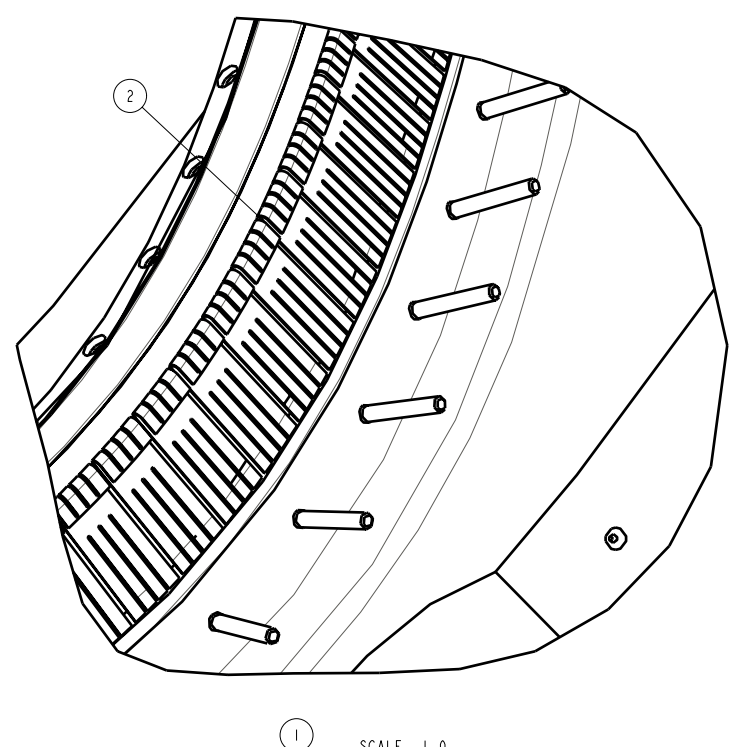
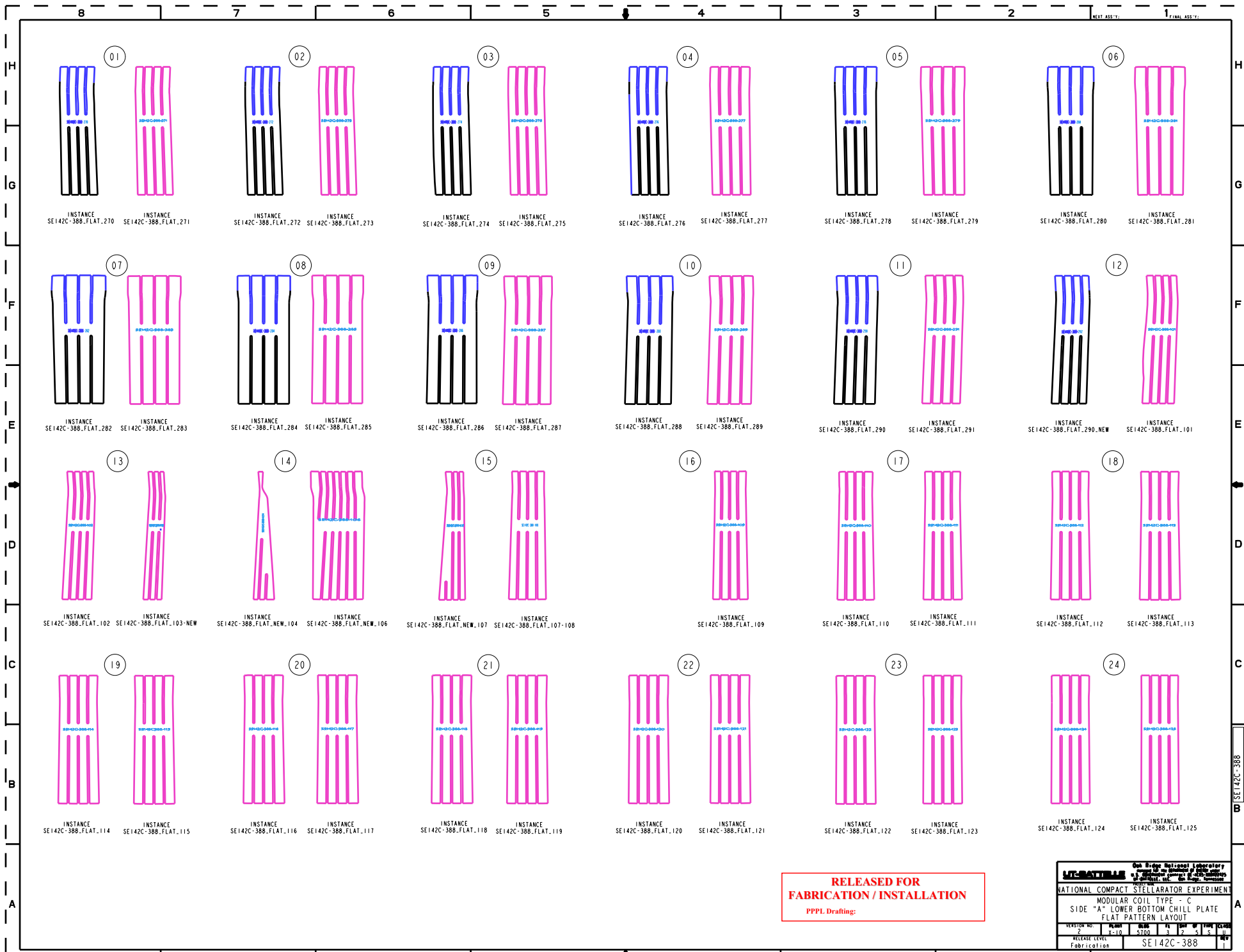


INSTANCE NAME	HOLE	S-DIM	PART NAME	INSTANCE NAME	HOLE	S-DIM	PART NAME
SEI42C-388-FLAT-270	1	0.8654170	SEI42C-388-270	SEI42C-388-FLAT-174	4	0.3854170	SEI42C-388-174
SEI42C-388-FLAT-271	1	0.8908330	SEI42C-388-271	SEI42C-388-FLAT-175	49	0.3908330	SEI42C-388-175
SEI42C-388-FLAT-272	1	0.8958330	SEI42C-388-272	SEI42C-388-FLAT-176	6	0.3958330	SEI42C-388-176
SEI42C-388-FLAT-273	2	0.9010420	SEI42C-388-273	SEI42C-388-FLAT-177	50	0.4010420	SEI42C-388-177
SEI42C-388-FLAT-274	4	0.9062500	SEI42C-388-274	SEI42C-388-FLAT-178	6	0.4062500	SEI42C-388-178
SEI42C-388-FLAT-275	3	0.9114580	SEI42C-388-275	SEI42C-388-FLAT-179	51	0.4114580	SEI42C-388-179
SEI42C-388-FLAT-276	4	0.9166670	SEI42C-388-276	SEI42C-388-FLAT-180	50	0.4166670	SEI42C-388-180
SEI42C-388-FLAT-277	4	0.9218750	SEI42C-388-277	SEI42C-388-FLAT-181	52	0.4218750	SEI42C-388-181
SEI42C-388-FLAT-278	3	0.9270830	SEI42C-388-278	SEI42C-388-FLAT-182	4	0.4270830	SEI42C-388-182
SEI42C-388-FLAT-279	5	0.9322920	SEI42C-388-279	SEI42C-388-FLAT-183	53	0.4322920	SEI42C-388-183
SEI42C-388-FLAT-280	4	0.9375000	SEI42C-388-280	SEI42C-388-FLAT-184	50	0.4375000	SEI42C-388-184
SEI42C-388-FLAT-281	6	0.9427080	SEI42C-388-281	SEI42C-388-FLAT-185	54	0.4427080	SEI42C-388-185
SEI42C-388-FLAT-282	0	0.9479170	SEI42C-388-282	SEI42C-388-FLAT-186	6	0.4479170	SEI42C-388-186
SEI42C-388-FLAT-283	7	0.9531250	SEI42C-388-283	SEI42C-388-FLAT-187	55	0.4531250	SEI42C-388-187
SEI42C-388-FLAT-284	0	0.9583330	SEI42C-388-284	SEI42C-388-FLAT-188	6	0.4583330	SEI42C-388-188
SEI42C-388-FLAT-285	8	0.9635420	SEI42C-388-285	SEI42C-388-FLAT-189	56	0.4635420	SEI42C-388-189
SEI42C-388-FLAT-286	0	0.9687500	SEI42C-388-286	SEI42C-388-FLAT-190	6	0.4687500	SEI42C-388-190
SEI42C-388-FLAT-287	9	0.9739580	SEI42C-388-287	SEI42C-388-FLAT-191	57	0.4739580	SEI42C-388-191
SEI42C-388-FLAT-288	0	0.9791670	SEI42C-388-288	SEI42C-388-FLAT-192	6	0.4791670	SEI42C-388-192
SEI42C-388-FLAT-289	10	0.9843750	SEI42C-388-289	SEI42C-388-FLAT-193	58	0.4843750	SEI42C-388-193
SEI42C-388-FLAT-290	0	0.9895830	SEI42C-388-290	SEI42C-388-FLAT-194	6	0.4895830	SEI42C-388-194
SEI42C-388-FLAT-291	11	0.9947920	SEI42C-388-291	SEI42C-388-FLAT-195-NEW	59	0.4947920	SEI42C-388-195
SEI42C-388-FLAT-290-NEW	0	0.0000000	SEI42C-388-292	SEI42C-388-FLAT-196	6	0.5000000	SEI42C-388-196
SEI42C-388-FLAT-101	12	0.0052980	SEI42C-388-101	SEI42C-388-FLAT-197	60	0.5052980	SEI42C-388-197
SEI42C-388-FLAT-102	0	0.0104170	SEI42C-388-102	SEI42C-388-FLAT-NEW-198	6	0.5104170	SEI42C-388-198
SEI42C-388-FLAT-103-NEW	13	0.0156250	SEI42C-388-103	SEI42C-388-FLAT-292	61	0.5156250	SEI42C-388-199
SEI42C-388-FLAT-NEW-104	0	0.0193410	SEI42C-388-104	SEI42C-388-FLAT-198	6	0.5208330	SEI42C-388-200
SEI42C-388-FLAT-NEW-106	14	0.0220000	SEI42C-388-106	SEI42C-388-FLAT-201	62	0.5260420	SEI42C-388-201
SEI42C-388-FLAT-NEW-107	0	0.0360000	SEI42C-388-107	SEI42C-388-FLAT-202	6	0.5312500	SEI42C-388-202
SEI42C-388-FLAT-NEW-108	15	0.0410000	SEI42C-388-108	SEI42C-388-FLAT-203	63	0.5364580	SEI42C-388-203
SEI42C-388-FLAT-109	16	0.0468150	SEI42C-388-109	SEI42C-388-FLAT-204	6	0.5416670	SEI42C-388-204
SEI42C-388-FLAT-110	0	0.0520830	SEI42C-388-110	SEI42C-388-FLAT-205	64	0.5468750	SEI42C-388-205
SEI42C-388-FLAT-111	17	0.0572920	SEI42C-388-111	SEI42C-388-FLAT-206	6	0.5520830	SEI42C-388-206
SEI42C-388-FLAT-112	0	0.0625000	SEI42C-388-112	SEI42C-388-FLAT-207	65	0.5572920	SEI42C-388-207
SEI42C-388-FLAT-113	18	0.0677080	SEI42C-388-113	SEI42C-388-FLAT-208	6	0.5625000	SEI42C-388-208
SEI42C-388-FLAT-114	19	0.0729170	SEI42C-388-114	SEI42C-388-FLAT-209	66	0.5677080	SEI42C-388-209
SEI42C-388-FLAT-115	19	0.0781250	SEI42C-388-115	SEI42C-388-FLAT-210	6	0.5729170	SEI42C-388-210
SEI42C-388-FLAT-116	20	0.0833330	SEI42C-388-116	SEI42C-388-FLAT-211	67	0.5781250	SEI42C-388-211
SEI42C-388-FLAT-117	20	0.0885420	SEI42C-388-117	SEI42C-388-FLAT-212	6	0.5833330	SEI42C-388-212
SEI42C-388-FLAT-118	0	0.0937500	SEI42C-388-118	SEI42C-388-FLAT-213	68	0.5885420	SEI42C-388-213
SEI42C-388-FLAT-119	21	0.0989580	SEI42C-388-119	SEI42C-388-FLAT-214	6	0.5937500	SEI42C-388-214
SEI42C-388-FLAT-120	0	0.1041670	SEI42C-388-120	SEI42C-388-FLAT-215	69	0.5989580	SEI42C-388-215
SEI42C-388-FLAT-121	22	0.1093750	SEI42C-388-121	SEI42C-388-FLAT-216	6	0.6041670	SEI42C-388-216
SEI42C-388-FLAT-122	0	0.1145830	SEI42C-388-122	SEI42C-388-FLAT-217	70	0.6093750	SEI42C-388-217
SEI42C-388-FLAT-123	23	0.1197920	SEI42C-388-123	SEI42C-388-FLAT-218	6	0.6145830	SEI42C-388-218
SEI42C-388-FLAT-124	0	0.1250000	SEI42C-388-124	SEI42C-388-FLAT-219	71	0.6197920	SEI42C-388-219
SEI42C-388-FLAT-125	24	0.1302080	SEI42C-388-125	SEI42C-388-FLAT-220	6	0.6250000	SEI42C-388-220
SEI42C-388-FLAT-126	0	0.1354170	SEI42C-388-126	SEI42C-388-FLAT-221	72	0.6302080	SEI42C-388-221
SEI42C-388-FLAT-127	25	0.1406250	SEI42C-388-127	SEI42C-388-FLAT-222	6	0.6354170	SEI42C-388-222
SEI42C-388-FLAT-128	26	0.1458330	SEI42C-388-128	SEI42C-388-FLAT-223	73	0.6406250	SEI42C-388-223
SEI42C-388-FLAT-129	26	0.1510420	SEI42C-388-129	SEI42C-388-FLAT-224	6	0.6458340	SEI42C-388-224
SEI42C-388-FLAT-130	0	0.1562500	SEI42C-388-130	SEI42C-388-FLAT-225	74	0.6510420	SEI42C-388-225
SEI42C-388-FLAT-131	27	0.1614580	SEI42C-388-131	SEI42C-388-FLAT-226	6	0.6562500	SEI42C-388-226
SEI42C-388-FLAT-132	0	0.1666670	SEI42C-388-132	SEI42C-388-FLAT-227	75	0.6614580	SEI42C-388-227
SEI42C-388-FLAT-133	28	0.1718750	SEI42C-388-133	SEI42C-388-FLAT-228	6	0.6666670	SEI42C-388-228
SEI42C-388-FLAT-134	0	0.1770830	SEI42C-388-134	SEI42C-388-FLAT-229	76	0.6718750	SEI42C-388-229
SEI42C-388-FLAT-135	29	0.1822920	SEI42C-388-135	SEI42C-388-FLAT-230	6	0.6770830	SEI42C-388-230
SEI42C-388-FLAT-136	0	0.1875000	SEI42C-388-136	SEI42C-388-FLAT-231	77	0.6822920	SEI42C-388-231
SEI42C-388-FLAT-137	30	0.1927080	SEI42C-388-137	SEI42C-388-FLAT-232	6	0.6875000	SEI42C-388-232
SEI42C-388-FLAT-138	0	0.1979170	SEI42C-388-138	SEI42C-388-FLAT-233	78	0.6927080	SEI42C-388-233
SEI42C-388-FLAT-139	31	0.2031250	SEI42C-388-139	SEI42C-388-FLAT-234	6	0.6979170	SEI42C-388-234
SEI42C-388-FLAT-140	0	0.2083330	SEI42C-388-140	SEI42C-388-FLAT-235	79	0.7031250	SEI42C-388-235
SEI42C-388-FLAT-141	32	0.2135420	SEI42C-388-141	SEI42C-388-FLAT-236	6	0.7083330	SEI42C-388-236
SEI42C-388-FLAT-142	0	0.2187500	SEI42C-388-142	SEI42C-388-FLAT-237	80	0.7135420	SEI42C-388-237
SEI42C-388-FLAT-143	33	0.2239580	SEI42C-388-143	SEI42C-388-FLAT-238	6	0.7187500	SEI42C-388-238
SEI42C-388-FLAT-144	0	0.2291670	SEI42C-388-144	SEI42C-388-FLAT-239	81	0.7239580	SEI42C-388-239
SEI42C-388-FLAT-145	34	0.2343750	SEI42C-388-145	SEI42C-388-FLAT-240	6	0.7291670	SEI42C-388-240
SEI42C-388-FLAT-146	0	0.2395830	SEI42C-388-146	SEI42C-388-FLAT-241	82	0.7343750	SEI42C-388-241
SEI42C-388-FLAT-147	35	0.2447920	SEI42C-388-147	SEI42C-388-FLAT-242	6	0.7395830	SEI42C-388-242
SEI42C-388-FLAT-148	0	0.2500000	SEI42C-388-148	SEI42C-388-FLAT-243	83	0.7447920	SEI42C-388-243
SEI42C-388-FLAT-149	36	0.2552080	SEI42C-388-149	SEI42C-388-FLAT-244	6	0.7500000	SEI42C-388-244
SEI42C-388-FLAT-150	0	0.2604170	SEI42C-388-150	SEI42C-388-FLAT-245	84	0.7552080	SEI42C-388-245
SEI42C-388-FLAT-151	37	0.2656250	SEI42C-388-151	SEI42C-388-FLAT-246	6	0.7604170	SEI42C-388-246
SEI42C-388-FLAT-152	0	0.2708330	SEI42C-388-152	SEI42C-388-FLAT-247	85	0.7656250	SEI42C-388-247
SEI42C-388-FLAT-153	38	0.2760420	SEI42C-388-153	SEI42C-388-FLAT-248	6	0.7708330	SEI42C-388-248
SEI42C-388-FLAT-154	0	0.2812500	SEI42C-388-154	SEI42C-388-FLAT-249	86	0.7760420	SEI42C-388-249
SEI42C-388-FLAT-155	39	0.2864580	SEI42C-388-155	SEI42C-388-FLAT-250	6	0.7812500	SEI42C-388-250
SEI42C-388-FLAT-156	0	0.2916670	SEI42C-388-156	SEI42C-388-FLAT-NEW-251	87	0.7864580	SEI42C-388-251
SEI42C-388-FLAT-157	40	0.2968750	SEI42C-388-157	SEI42C-388-FLAT-NEW-252	6	0.7916670	SEI42C-388-252
SEI42C-388-FLAT-158	0	0.3020830	SEI42C-388-158	SEI42C-388-FLAT-NEW-253	88	0.7968750	SEI42C-388-253
SEI42C-388-FLAT-159	41	0.3072920	SEI42C-388-159	SEI42C-388-FLAT-NEW-254	6	0.8020830	SEI42C-388-254
SEI42C-388-FLAT-160	0	0.3125000	SEI42C-388-160	SEI42C-388-FLAT-NEW-255	89	0.8072920	SEI42C-388-255
SEI42C-388-FLAT-161	42	0.3177080	SEI42C-388-161	SEI42C-388-FLAT-NEW-256	6	0.8125000	SEI42C-388-256
SEI42C-388-FLAT-162	0	0.3229170	SEI42C-388-162	SEI42C-388-FLAT-NEW-257	90	0.8177080	SEI42C-388-257
SEI42C-388-FLAT-163	43	0.3281250	SEI42C-388-163	SEI42C-388-FLAT-NEW-258	6	0.8229170	SEI42C-388-258
SEI42C-388-FLAT-164	0	0.3333330	SEI42C-388-164	SEI42C-388-FLAT-NEW-259	91	0.8281250	SEI42C-388-259
SEI42C-388-FLAT-165	44	0.3385420	SEI42C-388-165	SEI42C-388-FLAT-261	6	0.8333330	SEI42C-388-260
SEI42C-388-FLAT-166	0	0.3437500	SEI42C-388-166	SEI42C-388-FLAT-262	92	0.8385420	SEI42C-388-261
SEI42C-388-FLAT-167	45	0.3489580	SEI42C-388-167	SEI42C-388-FLAT-263	6	0.8437500	SEI42C-388-262
SEI42C-388-FLAT-168	0	0.3541670	SEI42C-388-168	SEI42C-388-FLAT-264	93	0.8489580	SEI42C-388-263
SEI42C-388-FLAT-169	46	0.3593750	SEI42C-388-169	SEI42C-388-FLAT-265	6	0.8541670	SEI42C-388-264
SEI42C-388-FLAT-170	0	0.3645830	SEI42C-388-170	SEI42C-388-FLAT-266	94	0.8593750	SEI42C-388-265
SEI42C-388-FLAT-171	47	0.3697920	SEI42C-388-171	SEI42C-388-FLAT-267	6	0.8645830	SEI42C-388-266
SEI42C-388-FLAT-172	0	0.3750000	SEI42C-388-172	SEI42C-388-FLAT-268	95	0.8697920	SEI42C-388-267
SEI42C-388-FLAT-173	48	0.3802080	SEI42C-388-173	SEI42C-388-FLAT-269	6	0.8750000	SEI42C-388-268
				SEI42C-388-FLAT-269	96	0.8802080	SEI42C-388-269

- NOTES
- DRAWING PREPARED IN ACCORDANCE WITH ASME Y14.100-2000.
 - INTERPRET DIMENSIONS AND TOLERANCES PER ANSI Y14.5M-1994.
 - DIMENSIONS ARE IN INCHES.
 - DRAWING DEPICTS FLAT PATTERN OF FORMED PARTS DEFINED BY PRO/ENGINEER FILES SEI42C-388-XXX.PRT.
 - PROFILE TOLERANCE OF FLAT PATTERN IS +/- .010 IN.
 - THICKNESS IS 0.040 +/- .006 IN. PER ASTM B248.
 - REMOVE ALL BURRS AND SHARP EDGES.
 - IDENTIFY ALL PARTS WITH "PART NAME" BY ETCHING OR PERMANENT MARKER.



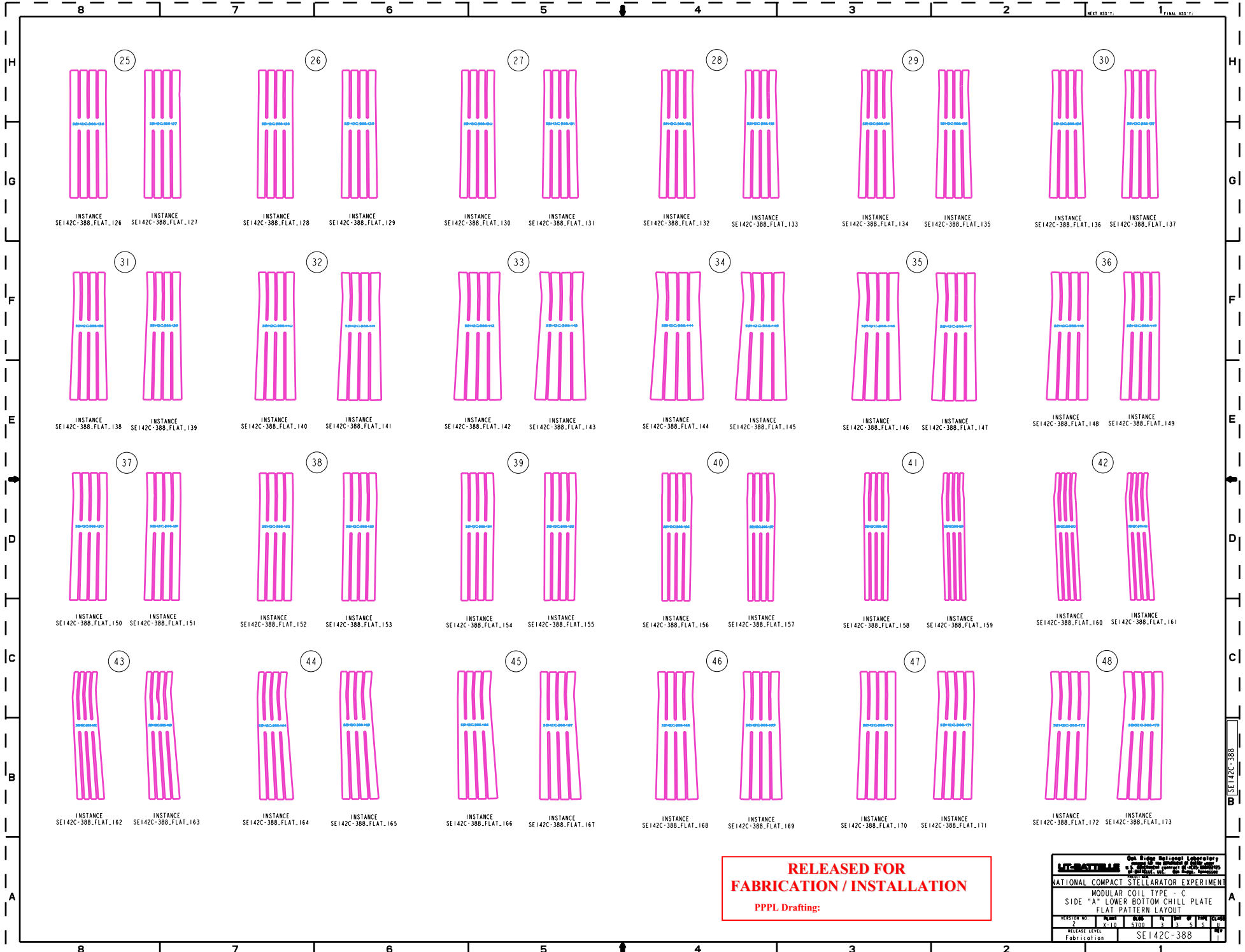


**RELEASED FOR
FABRICATION / INSTALLATION**
PPPL Drafting:

MTC/MTR/MS Oak Ridge National Laboratory
 NATIONAL COMPACT STELLARATOR EXPERIMENT
 MODULAR COIL TYPE - C
 SIDE "A" LOWER BOTTOM CHILL PLATE
 FLAT PATTERN LAYOUT

VERSION NO:	2	REVISED	DATE	BY	CHK'D BY
RELEASE LEVEL:	FC-10	STATUS	12-51-81	MS	MS
Fabrication					

SEI42C-388

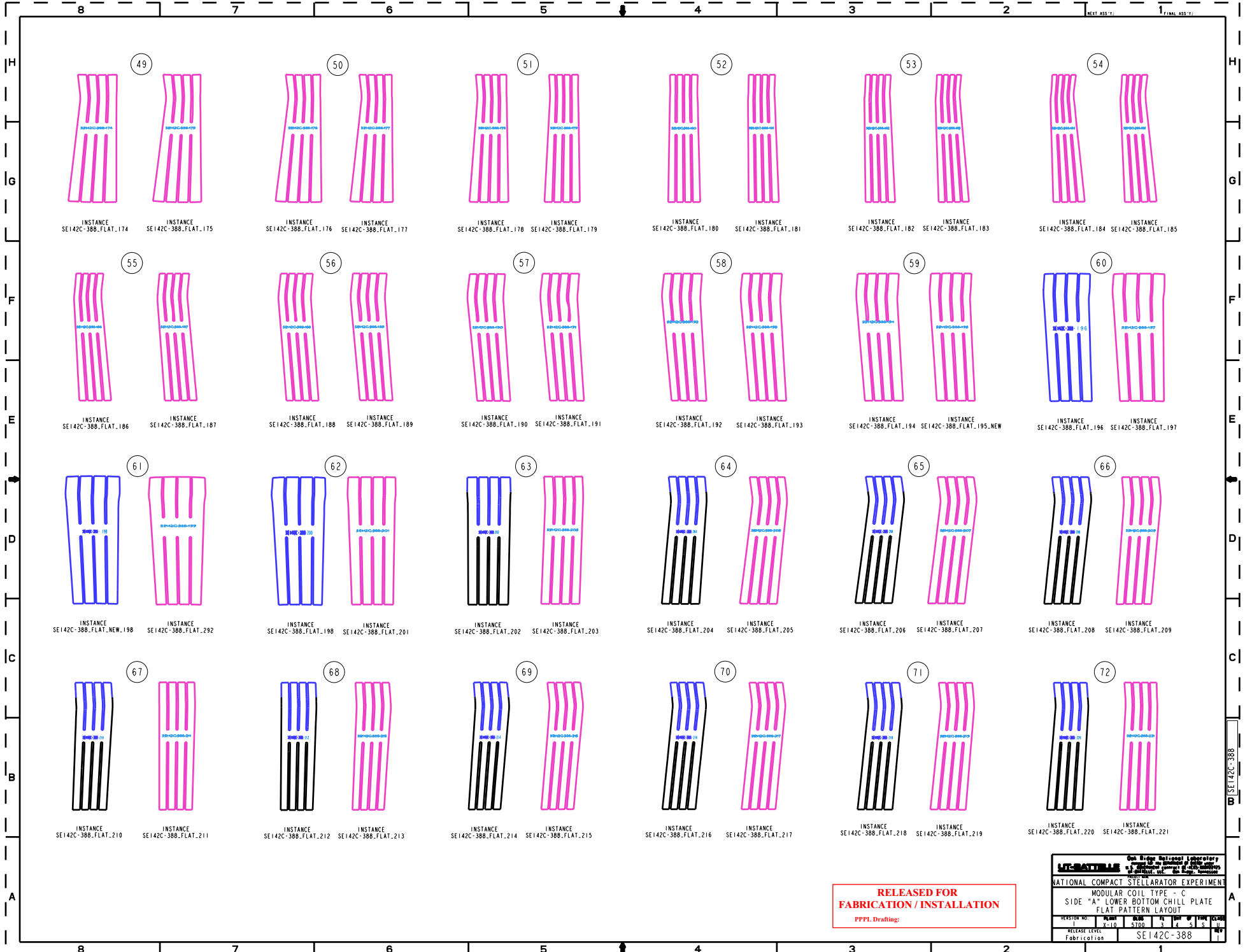


**RELEASED FOR
FABRICATION / INSTALLATION**

PPPL Drafting:

PPPL					
National Compact Stellarator Experiment					
MODULAR COIL TYPE - C					
SIDE "A" LOWER BOTTOM CHILL PLATE					
FLAT PATTERN LAYOUT					
VERSION NO:	2	REVISED	DATE	BY	CHKD
RELEASE LEVEL:	FC-10	ST-00	FC-3	FC-5	FC-11
Fabrication	SEI42C-388				

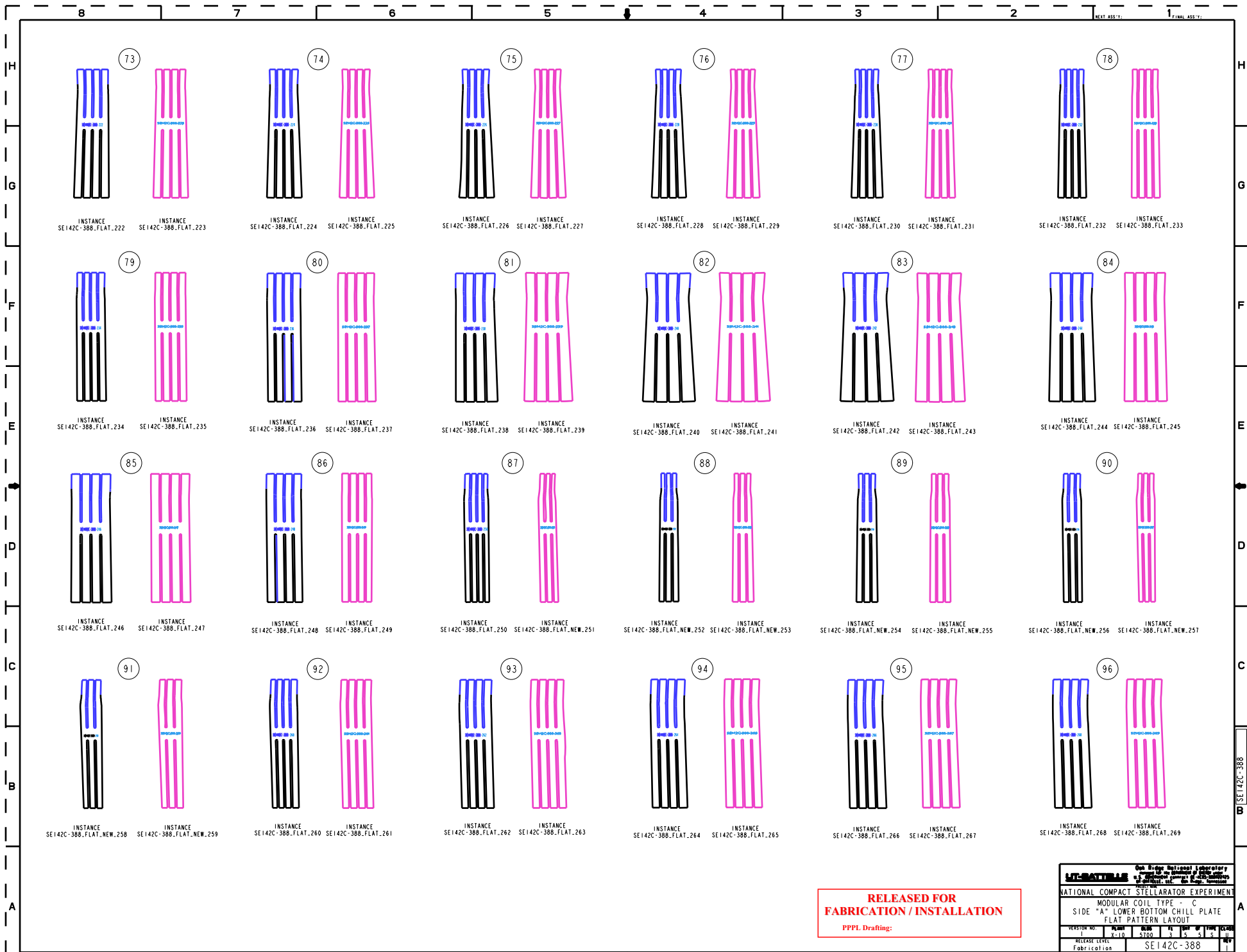
B SEI42C-388



**RELEASED FOR
FABRICATION / INSTALLATION**
PPPL Drafting:

PPPL		Oak Ridge National Laboratory managed by Lockheed Martin Energy Research Corporation for the U.S. Department of Energy	
NATIONAL COMPACT STELLARATOR EXPERIMENT			
MODULAR COIL TYPE - C			
SIDE "A" LOWER BOTTOM CHILL PLATE			
FLAT PATTERN LAYOUT			
VERSION NO:	REV:	DATE:	DATE OF THIS DRAWING:
1	1	5/10	11/14/91
RELEASE LEVEL:	Fabrication		REV:
	SEI42C-388		1

B SEI42C-388



8 NEXT ASSY: 1 FINAL ASSY:

**RELEASED FOR
FABRICATION / INSTALLATION**
 PPPL Drafting

MCMASTER		Oak Ridge National Laboratory managed by Lockheed Martin Energy Research Corp. for the U.S. Department of Energy under contract number DE-AC05-84OR21400	
NATIONAL COMPACT STELLARATOR EXPERIMENT MODULAR COIL TYPE - C SIDE "A" LOWER BOTTOM CHILL PLATE FLAT PATTERN LAYOUT			
VERSION NO:	REV:	DATE:	DRAWN BY:
RELEASE LEVEL:	SCALE:	SHEET NO.:	OF TOTAL SHEETS:
Fabrication:	SEI142C-388		