



## NC21038 – B4 Visual Review

### **E side undercut**

Long - Hole #94 to #5 is .010 to .012

Long - Hole #38 to #42 is .010 to .014

Long - Hole #60 to #62 is .010 to .012

Long - Hole #84 to #87 is .010 to .013

Short - Hole #90 to #92 is .010 to .012

### **D side undercut**

Long - Hole #3 to #4 is .010 to .012

Long - Hole #10 to #11 is .010 to .012

Long - Hole #32 to 33 is .010 to .011

Long - Hole #43 to #45 is .010 to .012

Long - Hole #71 to #75 is .010 to .012

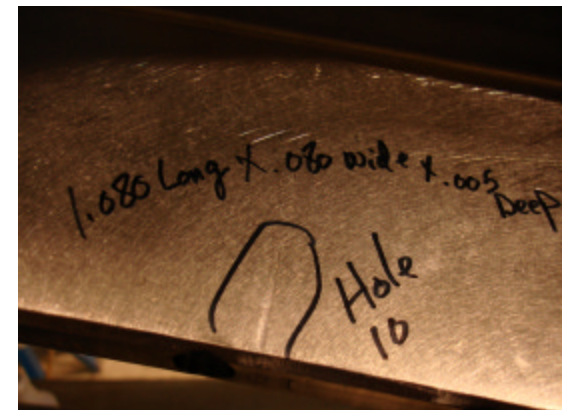
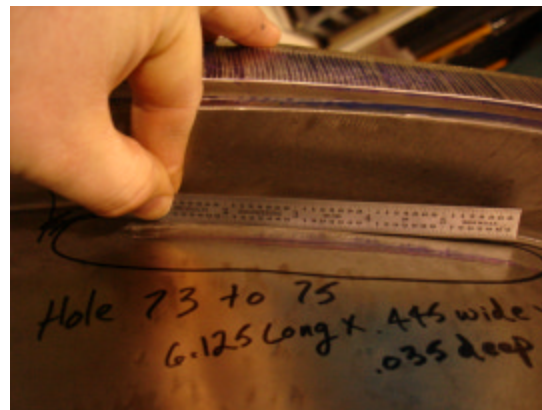
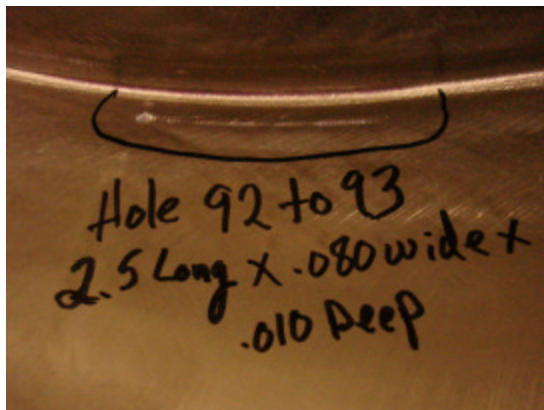
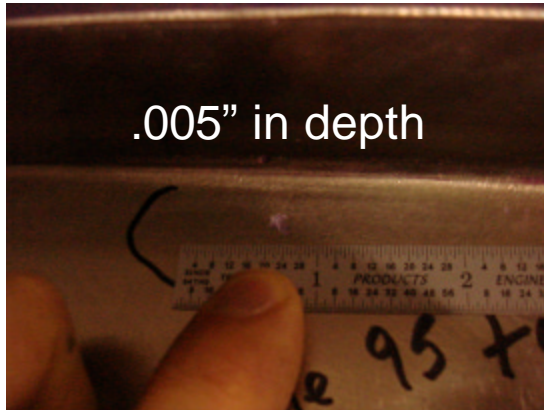
Short - Hole #53 to #55 is .010 to .011

Short - Hole #58 to #59 is .010 to .012



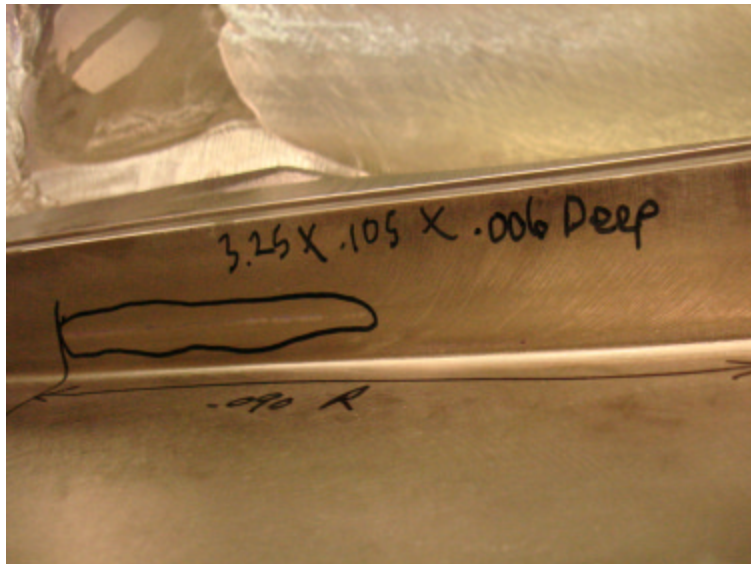
# NC21038 – B4 Visual Review

## Tool Gouges on Datum E side



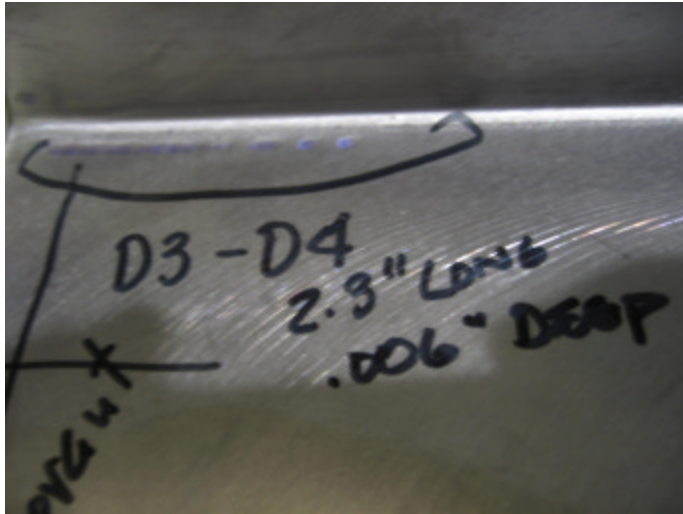


Tool Gouges on Datum E side cont.





Tool Gouges on Datum D side



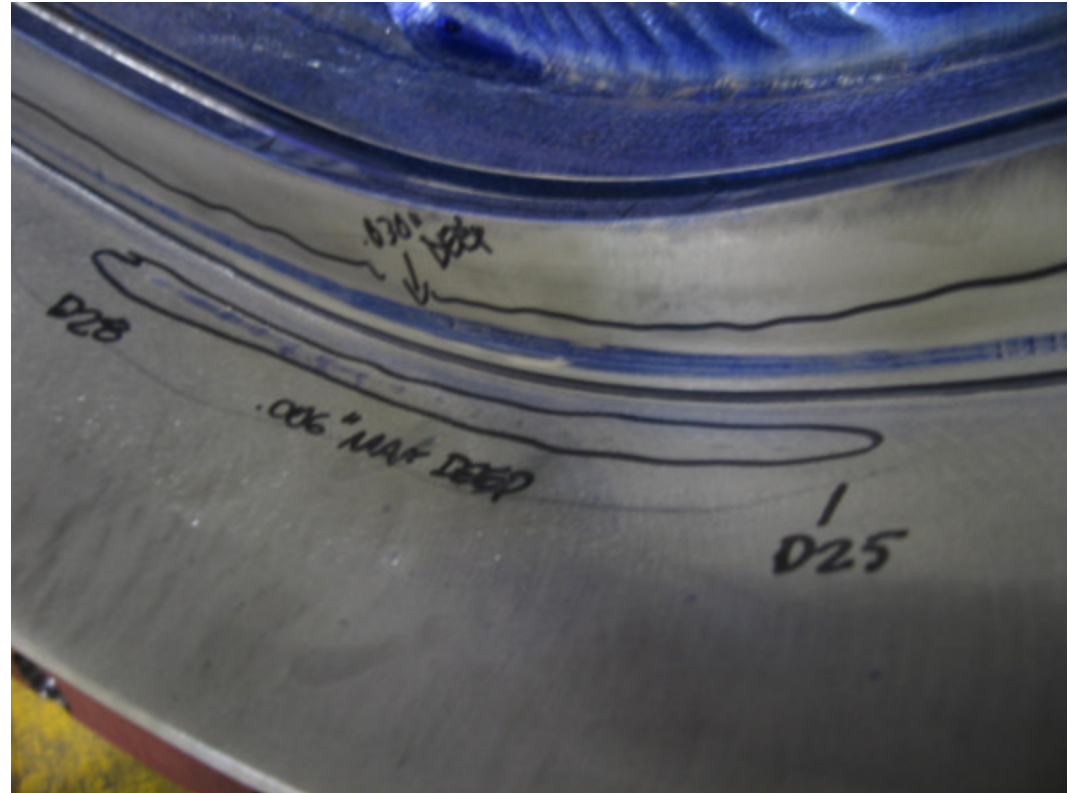
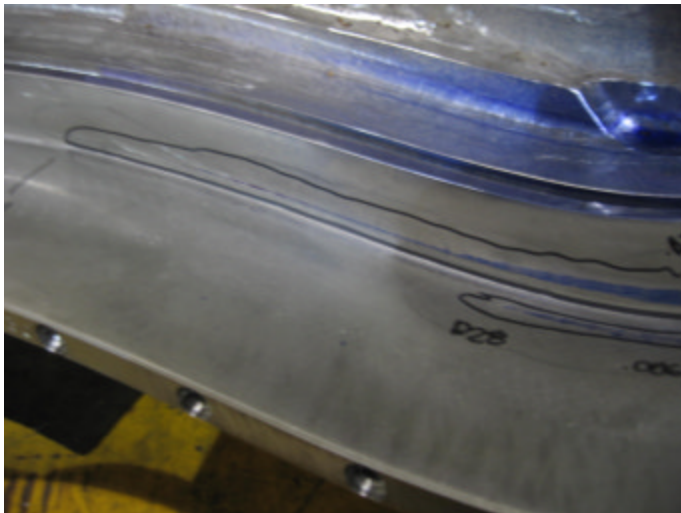
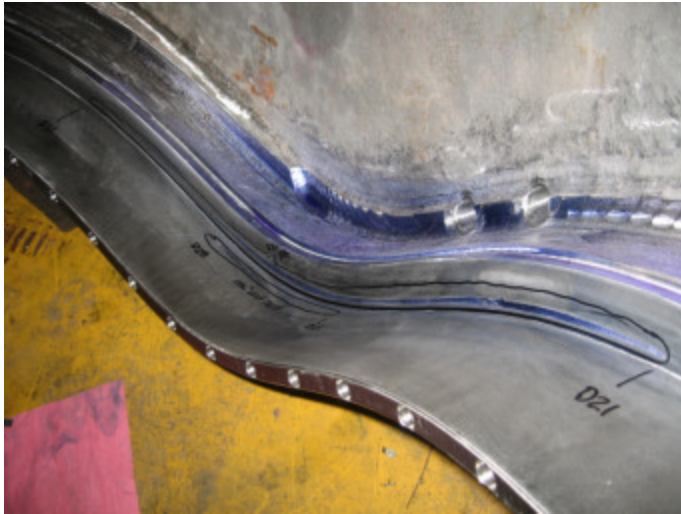


**Tool Gouges on Datum D side cont.**





### Tool Gouges on Datum D side cont.



Tool gouges on long and short legs of datum D side between T holes D21 and D31 (see previous slide). Gouges are in approximately the same location as reported on B3. Long leg gouge is up to .006" deep and short leg has an area up to .03" in depth.



**Tool Gouges on Datum D side cont.**





**Tool Gouges on Datum D side cont.**



Tooling gouges between holes 76 and 80 on the datum D side of the T. Gouges are very shallow ( $<.005''$ ) except where noted on picture. One area measures up to  $.025''$  deep.