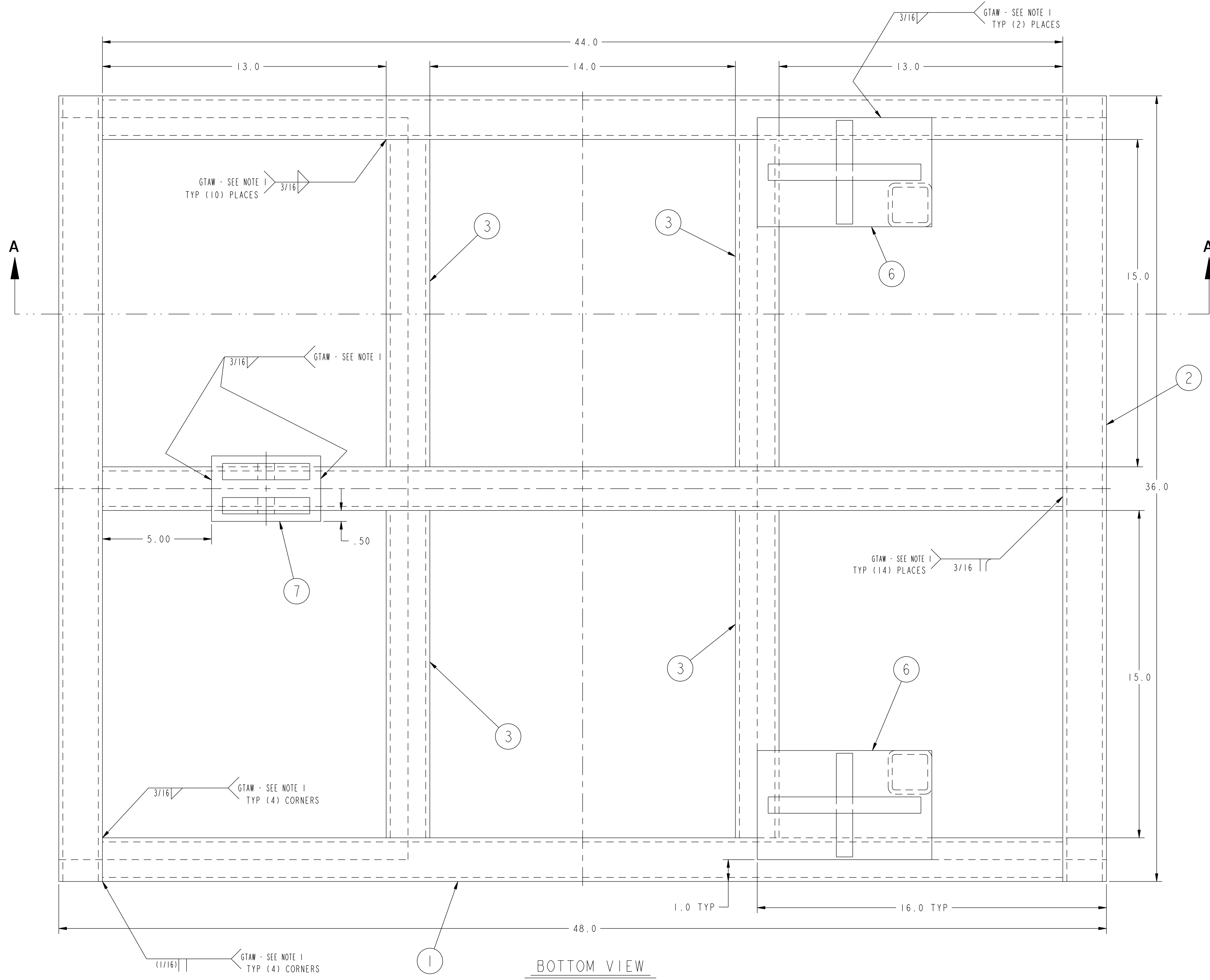
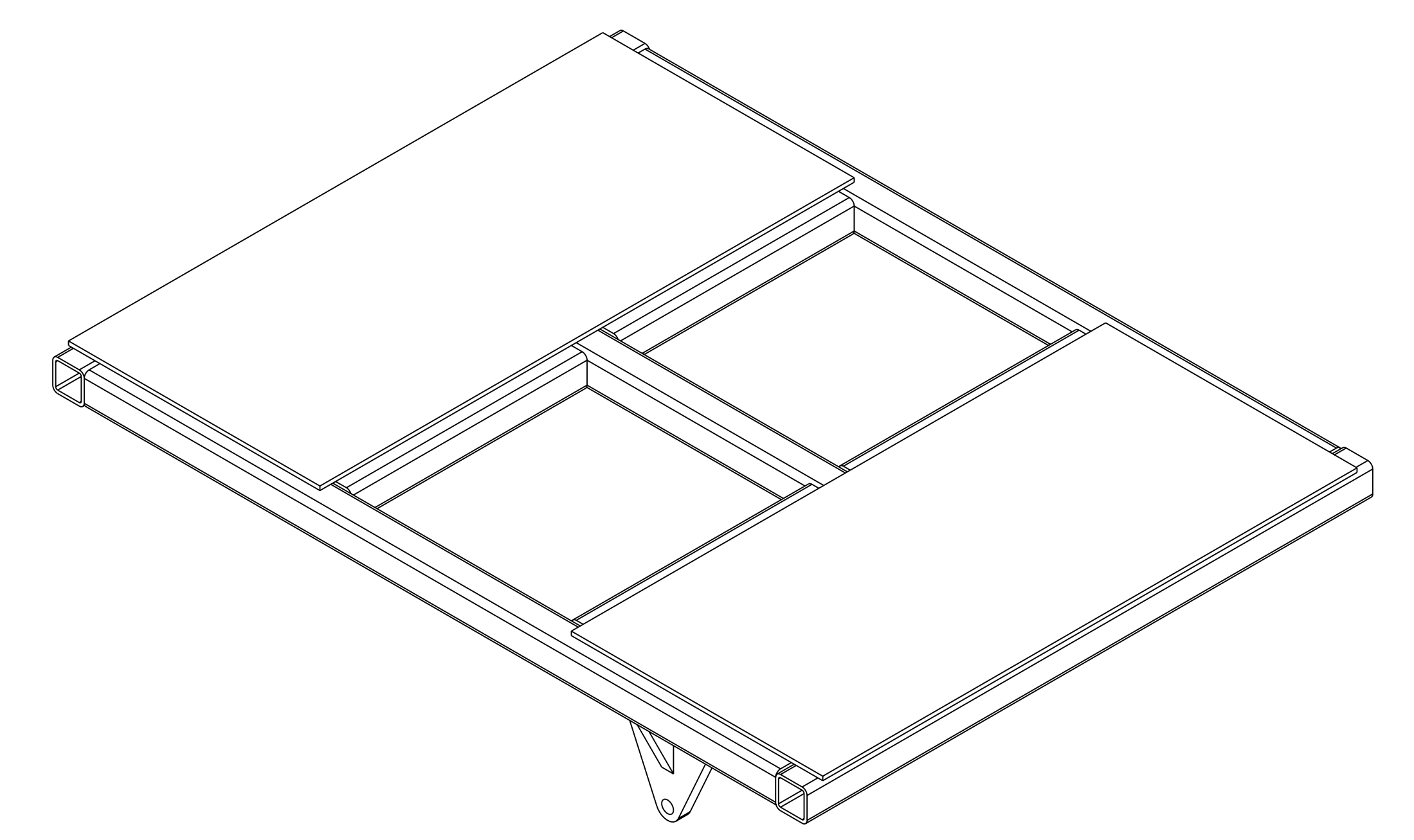


NO.	REVISION	BY	CH	SUP	APPROVED	DATE



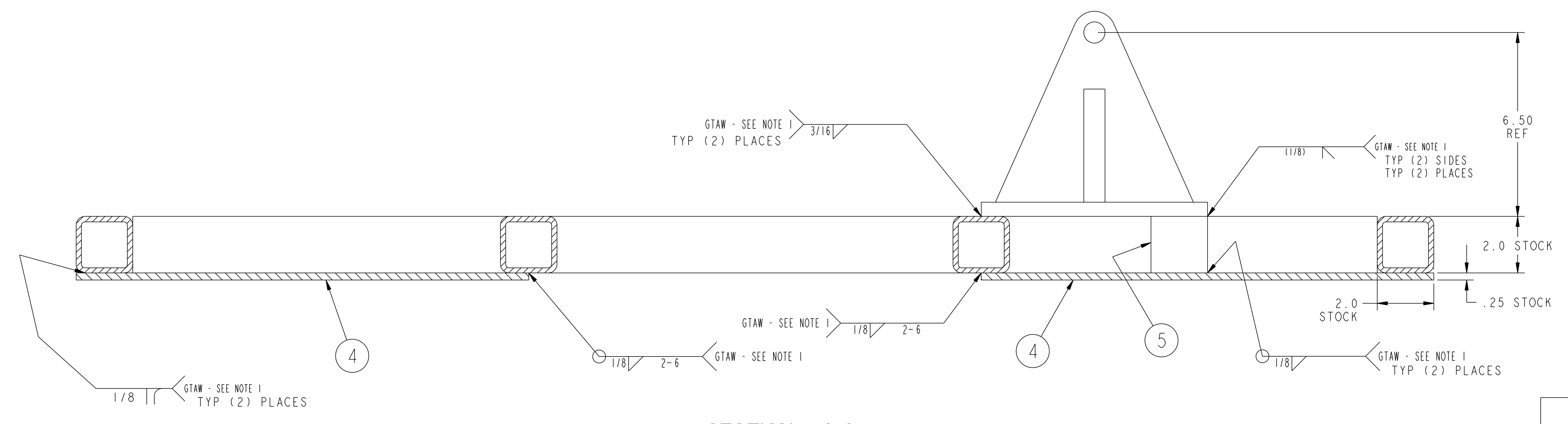
**BOTTOM VIEW**



**REFERENCE ISOMETRIC VIEW**

**NOTES**

1. WELDING SHALL BE PERFORMED IN ACCORDANCE WITH THE REQUIREMENTS OF AWS D1.1 SECTION 6 AND PPPL PROCEDURE EM-002. VISUAL WELD INSPECTION SHALL BE PERFORMED IN ACCORDANCE WITH THE ACCEPTANCE CRITERIA OF AWS D1.1 SECTION 6.
2. DISTORTION OF TUBE FRAME AND TOP PLATES, DUE TO WELDING, MUST BE KEPT TO A MINIMUM.



**SECTION A-A**

NO.	PART ASSY NO.	DRAWING NO.	NOMENCLATURE OR DESCRIPTION	MATERIAL	QTY REQD
1	7	SE144-126-03	PLATFORM CLEVIS TONGUE BRACKET WELDMENT	SEE DWG	
2	6	SE144-126-02	PLATFORM CLEVIS BRACKET WELDMENT	SEE DWG	
2	5	THIS DWG	2 X 2 X 3/16 SQ. STRUCT TUBE X 2" LG	ASTM A36	
2	4	THIS DWG	TOP PLATE	ASTM A569	
4	3	THIS DWG	2 X 2 X 3/16 SQ. STRUCT TUBE X 15" LG	ASTM A36	
2	2	THIS DWG	2 X 2 X 3/16 SQ. STRUCT TUBE X 36" LG	ASTM A36	
3	1	THIS DWG	2 X 2 X 3/16 SQ. STRUCT TUBE X 44" LG	ASTM A36	
3	1	THIS DWG	SPOOL PLATFORM WELDMENT		1

**PARTS LIST**

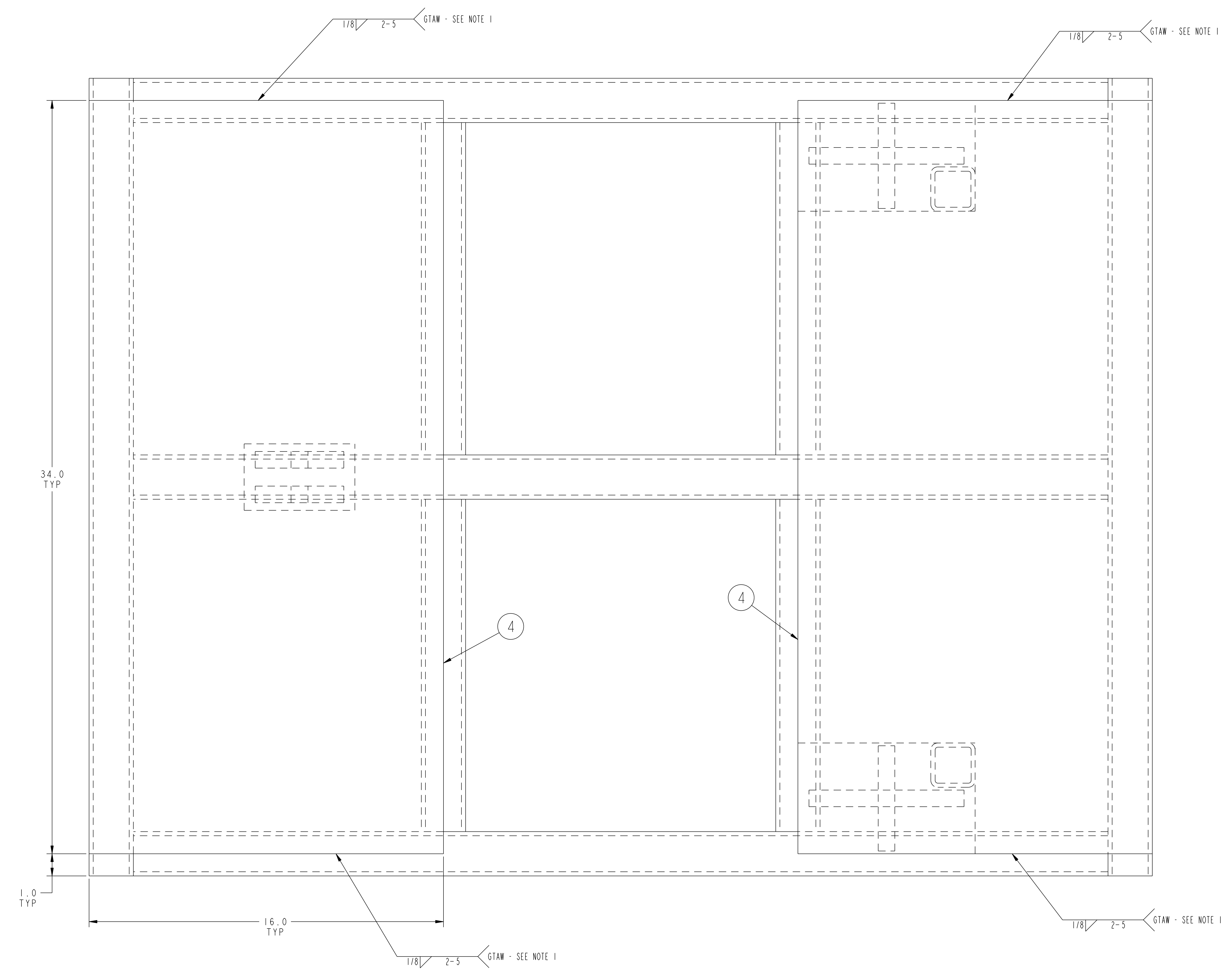
COMPUTER GENERATED DRAWING MANUAL CHANGES NOT PERMITTED Pro E	CENTRAL FILES: UNLESS OTHERWISE SPECIFIED DIMENSIONS ARE IN INCHES MACHINE SURFACES UNLESS OTHERWISE SPECIFIED BREAK SHARP EDGES .005/.020	PRINCETON PLASMA PHYSICS LABORATORY PRINCETON UNIVERSITY <b>NATIONAL COMPACT STELLARATOR EXPERIMENT</b> MODULAR COIL WINDING FACILITY COPPER SPOOLS MANIPULATOR SPOOL PLATFORM WELDMENT	
DO NOT VERIFY INFORMATION BY SCALING DRAWING	TOLERANCES NON-CUMULATIVE DECIMAL-INCH FRACTIONS .XX ±.000 .XXX ±.005 ANGULAR ±.0°-15° OVER 120° ±.1°-1.2°	DSN: L. MORRIS CHK: S. RAFTOPOULOS ENGR: J. CHRZANOWSKI SUPV: J. SIEGEL	DRAWING NO: <b>SE144-124</b> SHEET 1 OF 2 REV 0

**RELEASE LEVEL: Fabrication**  
**DWG VERSION NO: 3**

WEIGHT 202.1 lbs
MODEL NAME SE144-124
WELDING ENGINEER

NCSX-SE144-124

NO.	REVISION	BY	CH	SUP	APPROVED	DATE



TOP VIEW

FOR NOTES AND BILL OF MATERIAL SEE SHEET 1

RELEASE LEVEL: Fabrication  
DWG VERSION NO: 3

WEIGHT  
202.1 lbs  
MODEL NAME  
SE144-124  
WELDING  
ENGINEER

COMPUTER GENERATED DRAWING MANUAL CHANGES NOT PERMITTED Pro E DO NOT VERIFY INFORMATION BY SCALING DRAWING	CENTRAL FILES:	PRINCETON PLASMA PHYSICS LABORATORY PRINCETON UNIVERSITY <b>NATIONAL COMPACT STELLARATOR EXPERIMENT</b>	
	UNLESS OTHERWISE SPECIFIED	MODULAR COIL WINDING FACILITY COPPER SPOOLS MANIPULATOR SPOOL PLATFORM WELDMENT	
NEXT ASSEMBLY	TOLERANCES NON-CUMULATIVE	DSN: L. MORRIS	DRAWING NO:
	DECIMAL-INCH FRACTIONS	CHK: S. RAFTOPOULOS	<b>SE144-124</b>
	.X +/- .000 0°-120° +/- .010	ENGR: J. CHRZANOWSKI	SHEET 2 OF 2
	.XX +/- .005 12°-120° +/- .010	SUPV: J. SIEGEL	REV 0
	.XXX +/- .005 72°-120° +/- .010 ANGULAR +/- .0°-15° OVER 120° +/- .010		