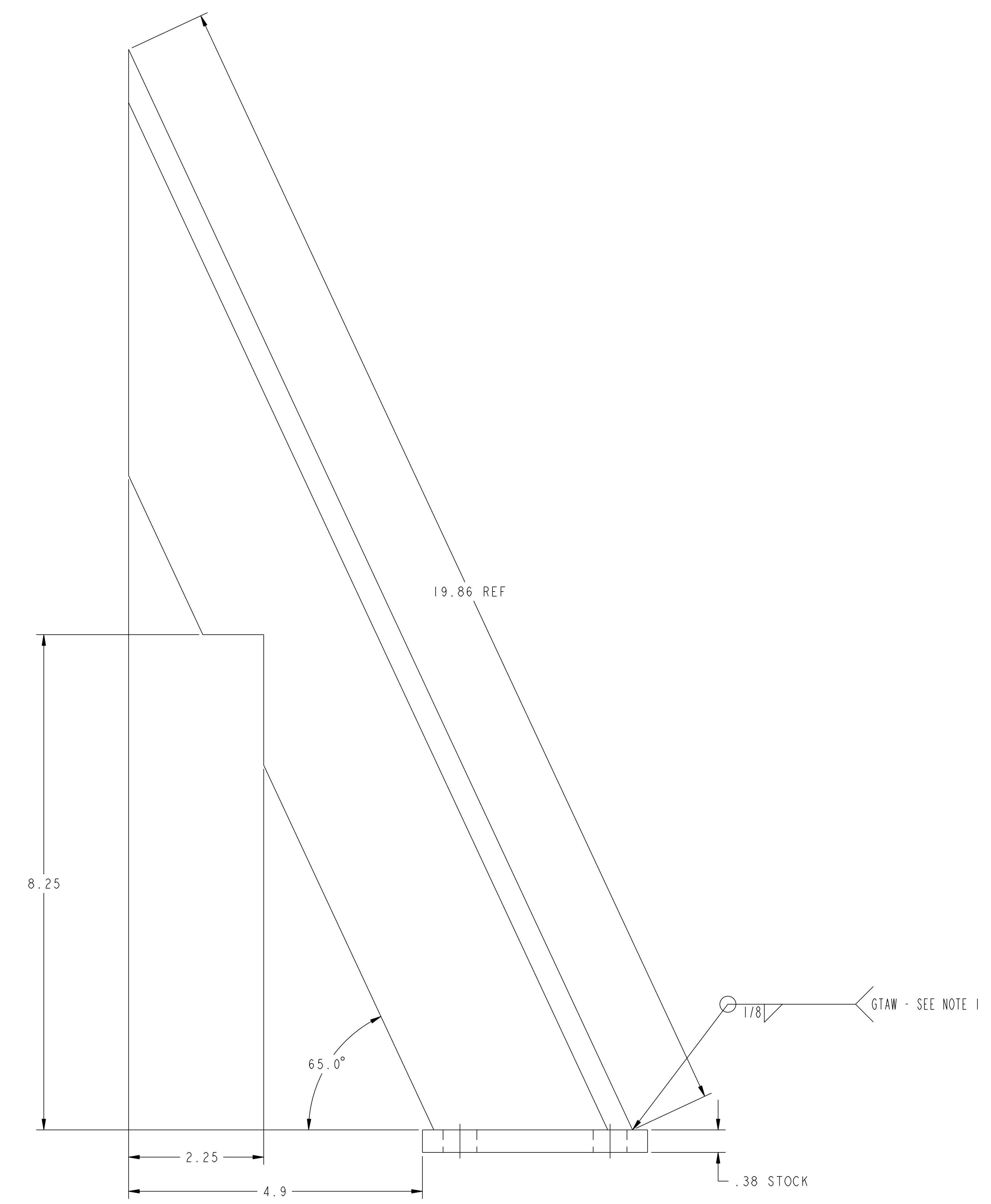
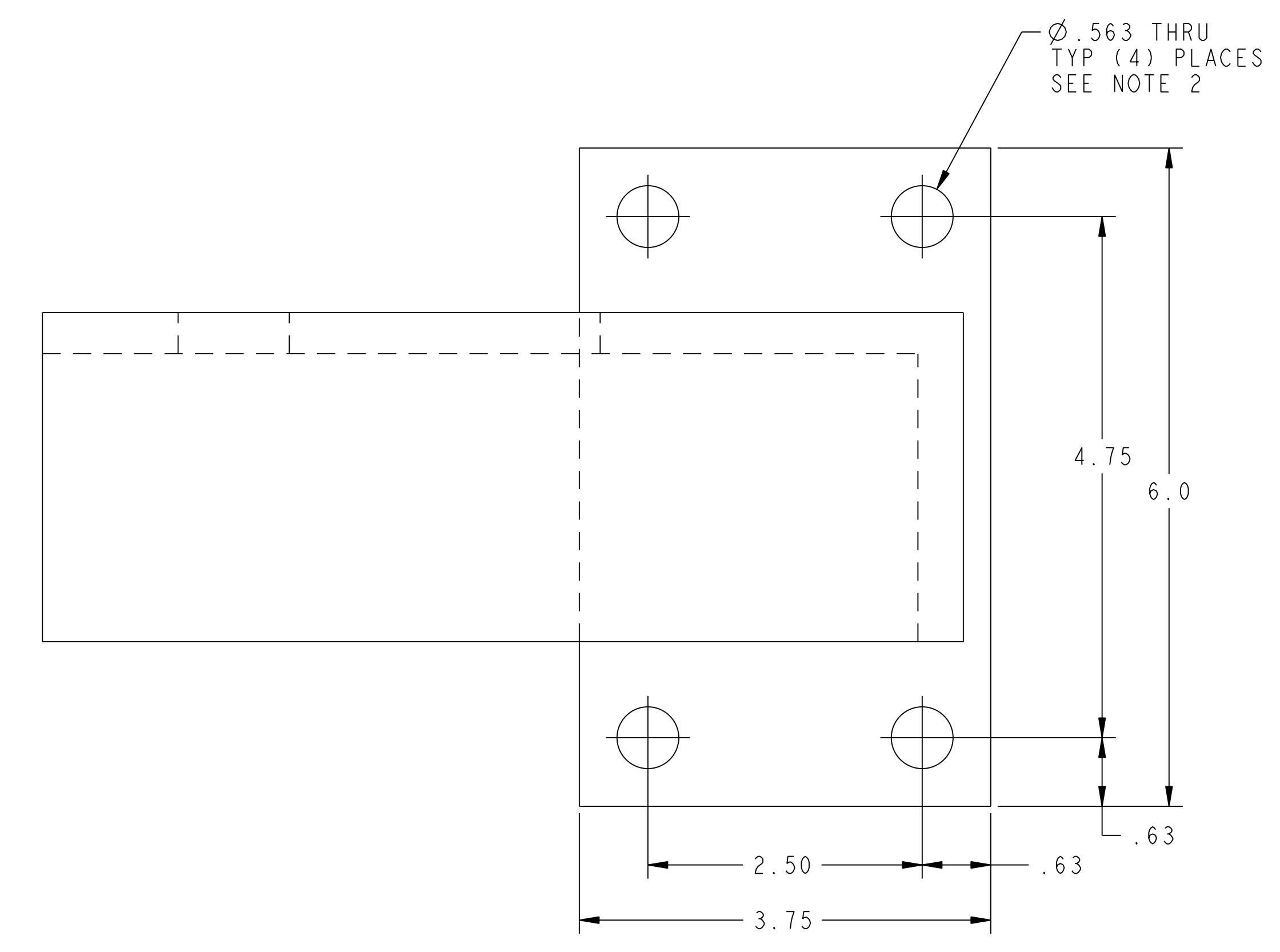


NO.	REVISION	BY	CH	SUP	APPROVED	DATE



02 ASSEMBLY - SUPPORT STAND BRACE WELDMENT - AS SHOWN
03 ASSEMBLY - SUPPORT STAND BRACE WELDMENT - OPPOSITE

FOR NOTES AND BILL OF MATERIAL SEE SHEET 1

RELEASE LEVEL: Fabrication
DWG VERSION NO: 2

WEIGHT	61.6 lbs
MODEL NAME	SE144-125
WELDING ENGINEER	

COMPUTER GENERATED DRAWING MANUAL CHANGES NOT PERMITTED Pro E	CENTRAL FILES: UNLESS OTHERWISE SPECIFIED	PRINCETON PLASMA PHYSICS LABORATORY PRINCETON UNIVERSITY NATIONAL COMPACT STELLARATOR EXPERIMENT	
DO NOT VERIFY INFORMATION BY SCALING DRAWING	DIMENSIONS ARE IN INCHES MACHINE SURFACES BREAK SHARP EDGES .005/.020	MODULAR COIL WINDING FACILITY COPPER SPOOLS MANIPULATOR SPOOL SUPPORT STAND WELDMENTS	
NEXT ASSEMBLY	TOLERANCES NON-CUMULATIVE DECIMAL-INCH FRACTIONS .XX ±.000 0°-12° ±.114 .XXX ±.005 12°-120° ±.114 ANGULAR ±.0°-15° OVER 120° ±.112	DSN: L. MORRIS CHK: S. RAFTOPOULOS ENGR: J. CHRZANOWSKI SUPV: J. SIEGEL	DRAWING NO: SE144-125 SHEET 2 OF 2 REV 0

NCSX-SE144-125