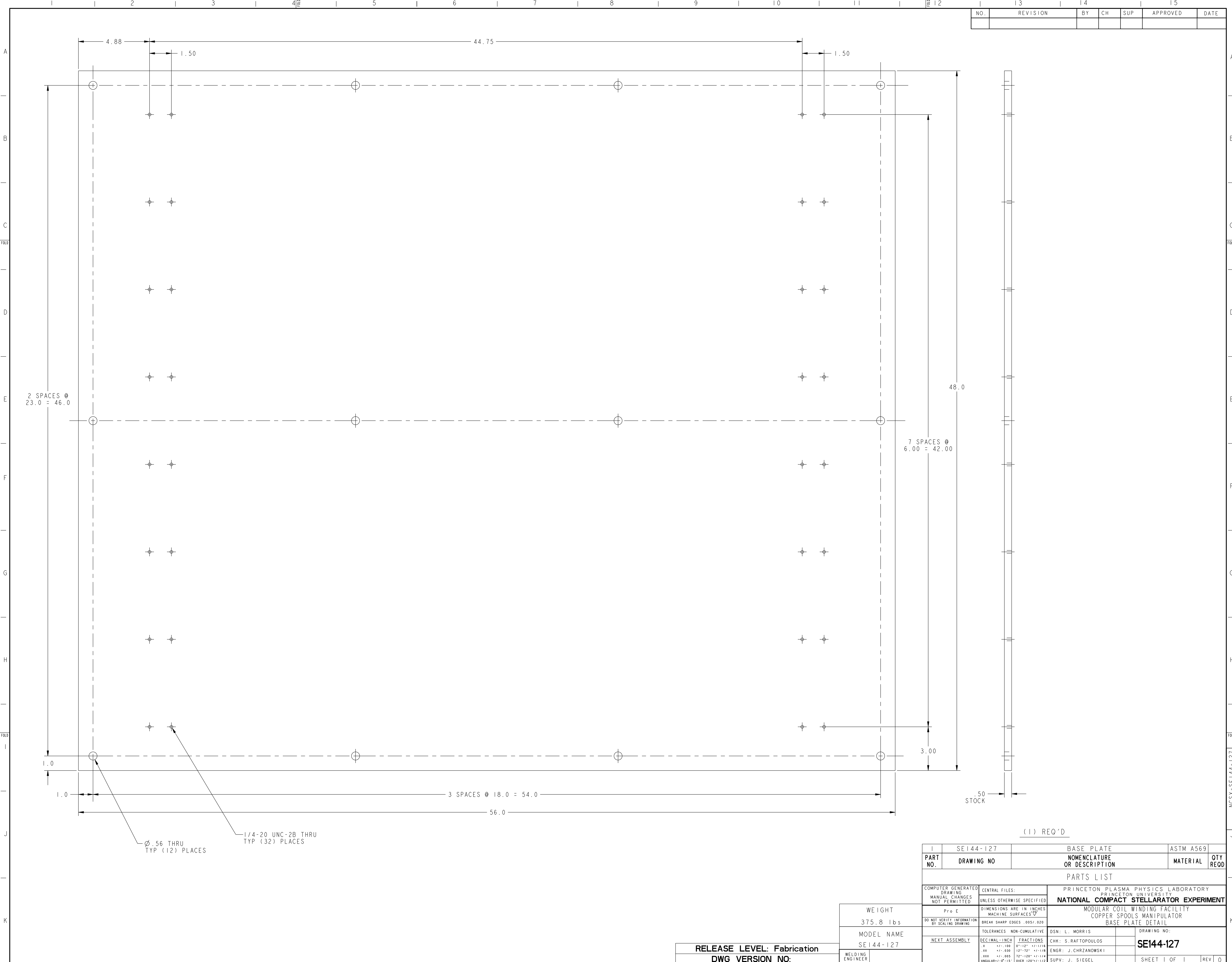


NO.	REVISION	BY	CH	SUP	APPROVED	DATE



2 SPACES @
23.0 = 46.0

7 SPACES @
6.00 = 42.00

1.0

1.0 3 SPACES @ 18.0 = 54.0

56.0

Ø .56 THRU
TYP (12) PLACES

1/4-20 UNC-2B THRU
TYP (32) PLACES

48.0

3.00

.50
STOCK

(1) REQ'D

RELEASE LEVEL: Fabrication
DWG VERSION NO:

WEIGHT
375.8 lbs

MODEL NAME
SE144-127

WELDING
ENGINEER

1	SE144-127	BASE PLATE	ASTM A569	
PART NO.	DRAWING NO	NOMENCLATURE OR DESCRIPTION	MATERIAL	QTY REOD
PARTS LIST				
COMPUTER GENERATED DRAWING MANUAL CHANGES NOT PERMITTED Pro E	CENTRAL FILES: UNLESS OTHERWISE SPECIFIED	PRINCETON PLASMA PHYSICS LABORATORY PRINCETON UNIVERSITY NATIONAL COMPACT STELLARATOR EXPERIMENT		
DO NOT VERIFY INFORMATION BY SCALING DRAWING	DIMENSIONS ARE IN INCHES MACHINE SURFACES BREAK SHARP EDGES .005/.020	MODULAR COIL WINDING FACILITY COPPER SPOOLS MANIPULATOR BASE PLATE DETAIL		
TOLERANCES NON-CUMULATIVE	DECIMAL-INCH FRACTIONS	DSN: L. MORRIS	DRAWING NO:	
NEXT ASSEMBLY	.XX +/- .000 .XXX +/- .005 ANGULAR +/- 0°15'	CHK: S. RAFTOPOULOS ENGR: J. CHRZANOWSKI SUPV: J. SIEGEL	SE144-127	
			SHEET 1 OF 1	REV 0