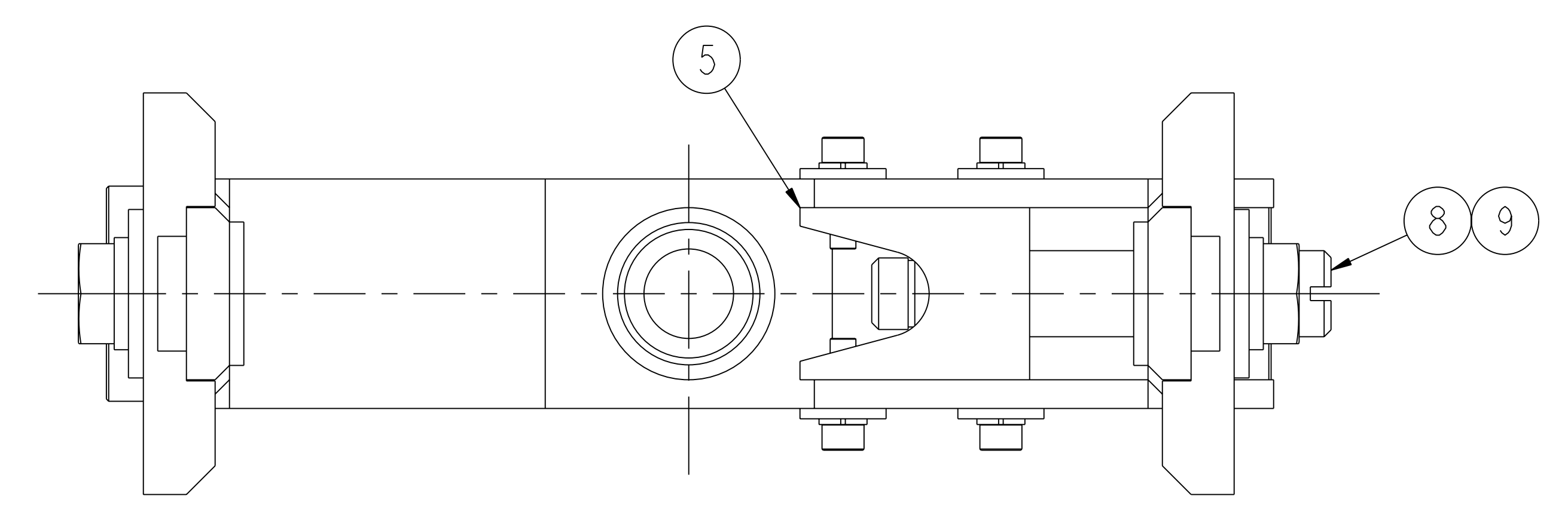
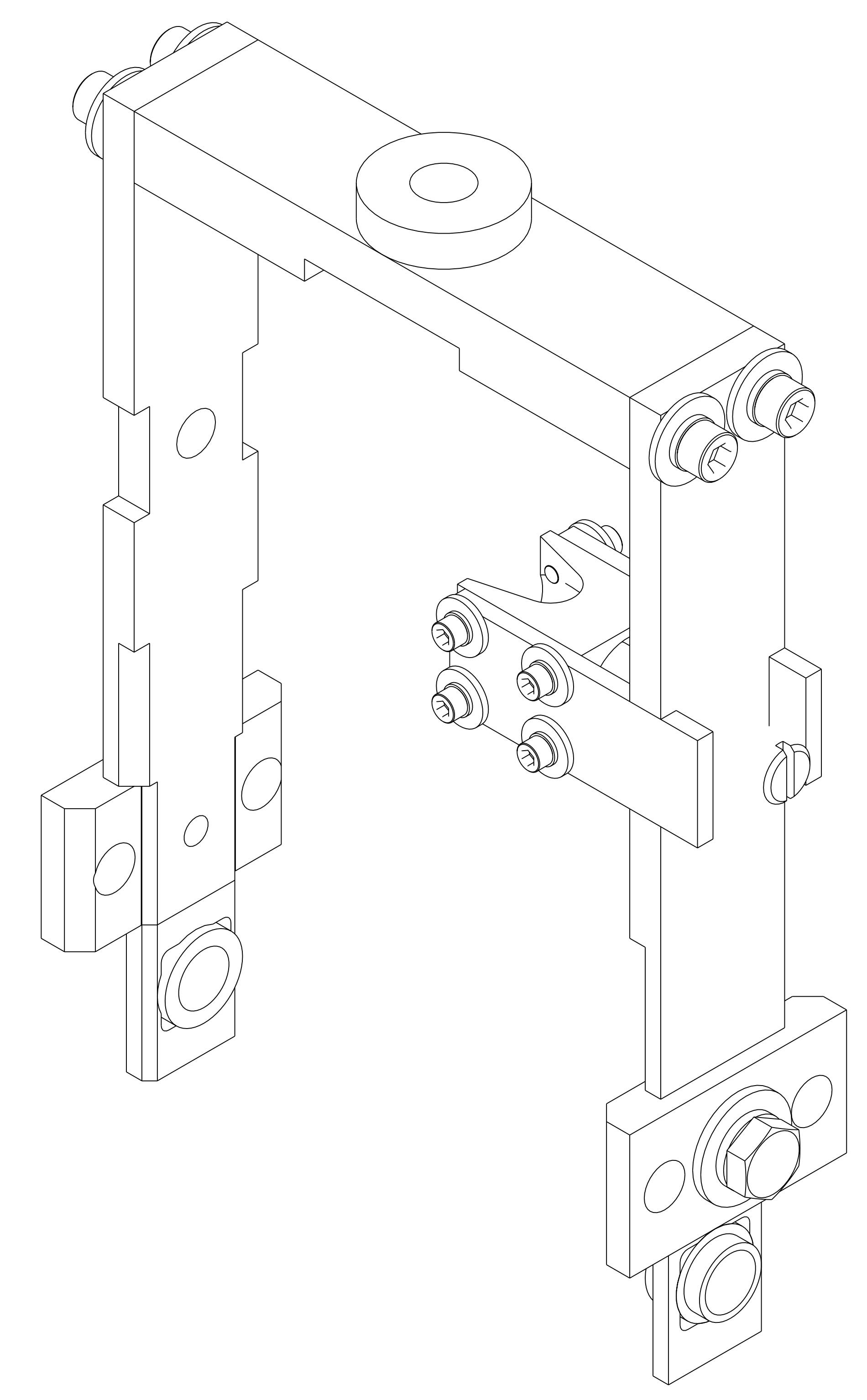
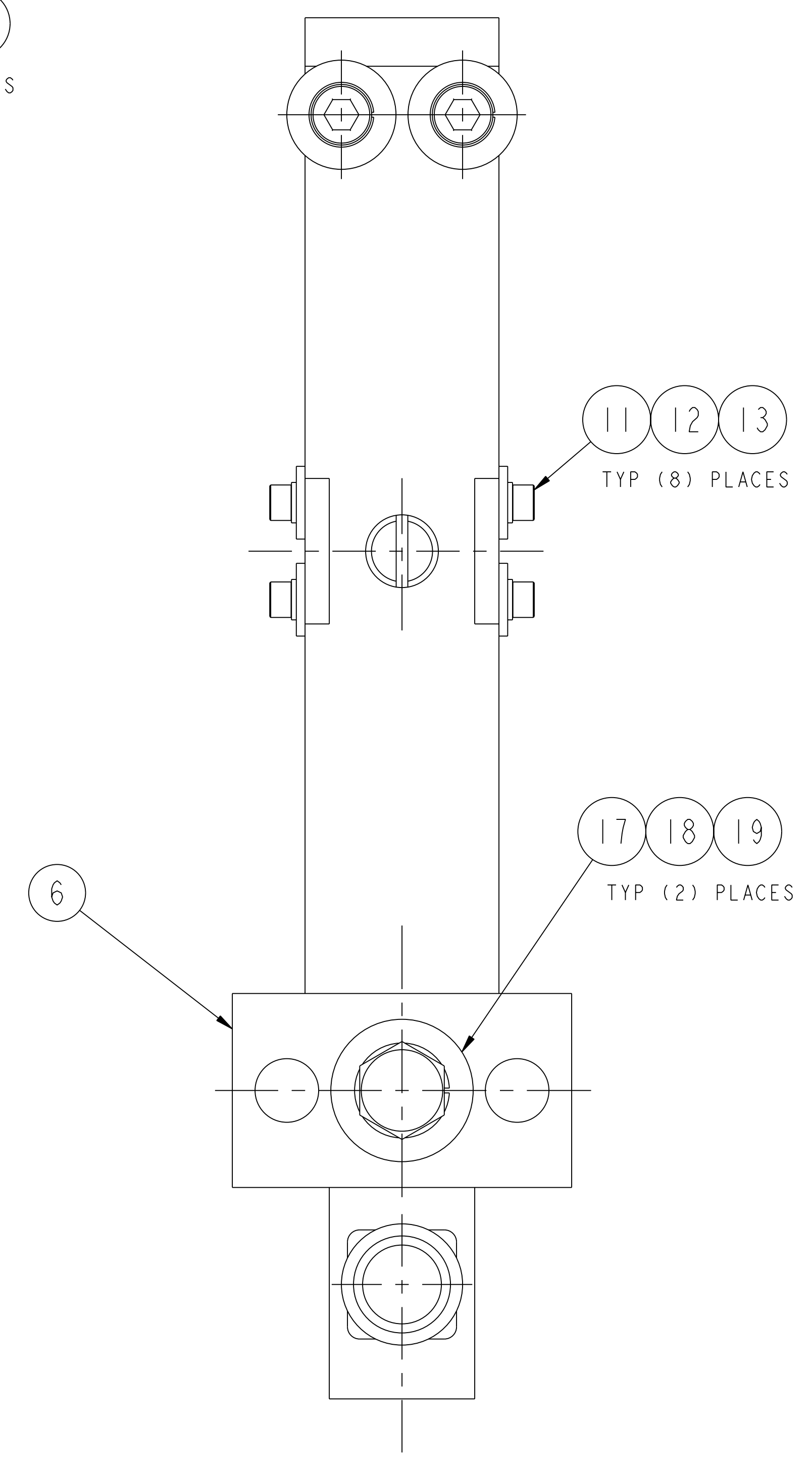
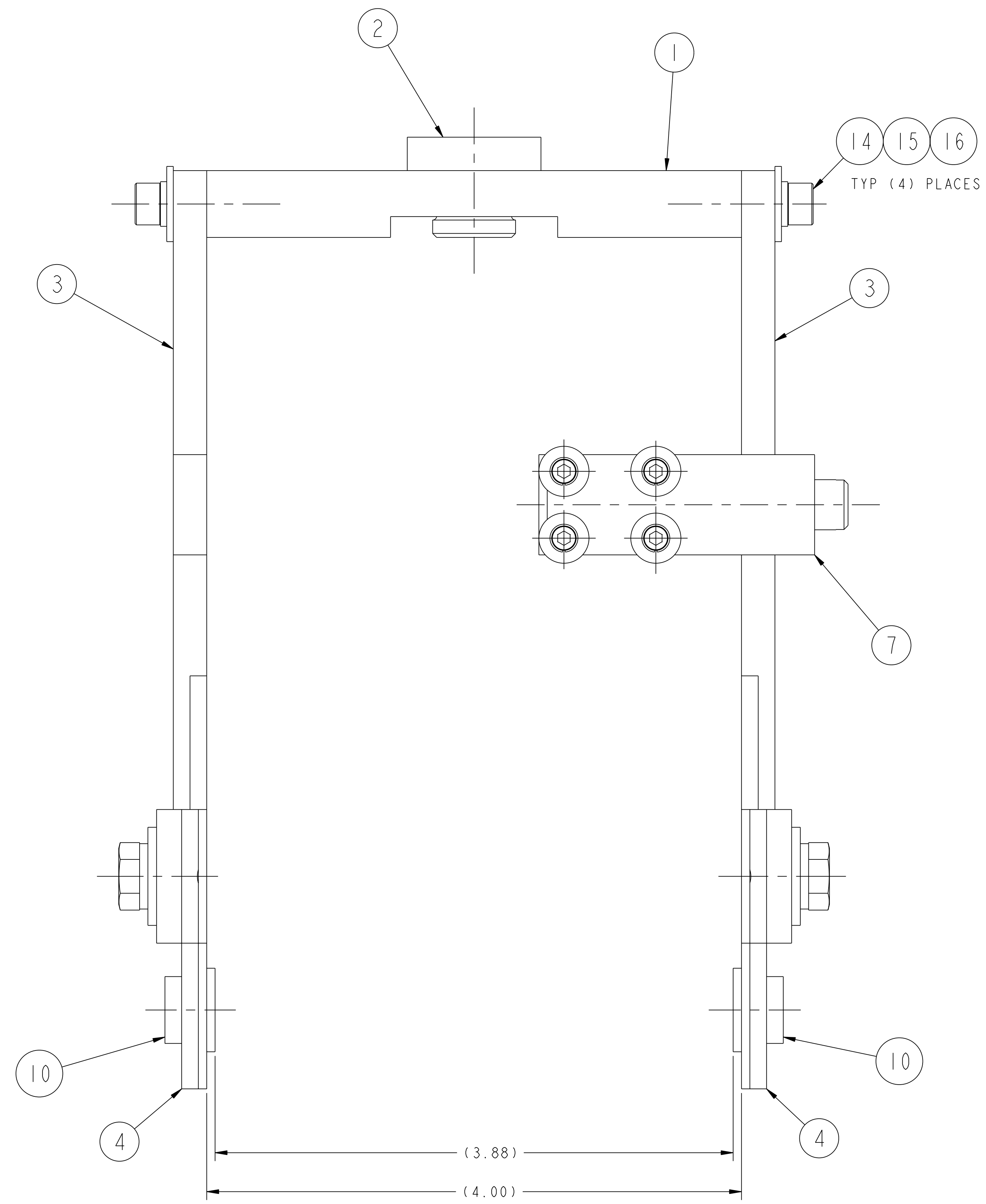


NO.	REVISION	BY	CH	SUP	APPROVED	DATE



**RELEASED FOR  
FABRICATION / INSTALLATION**  
PPPL Drafting:

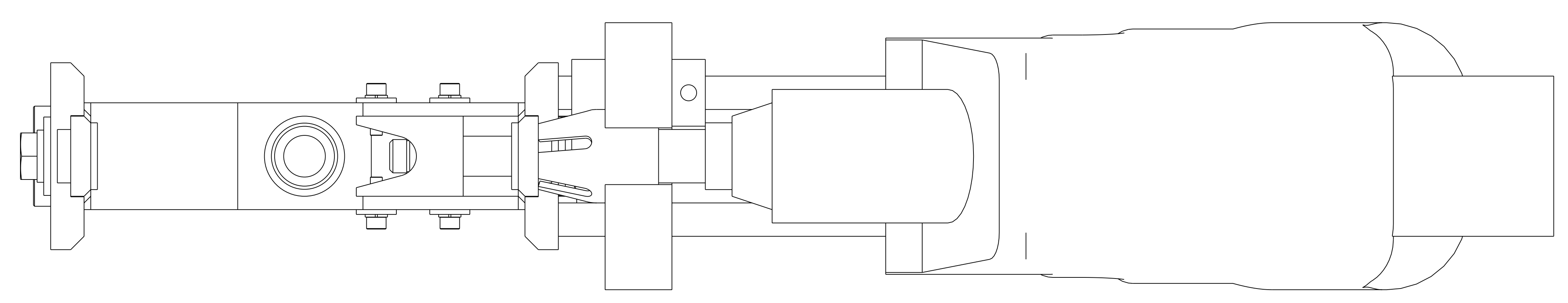
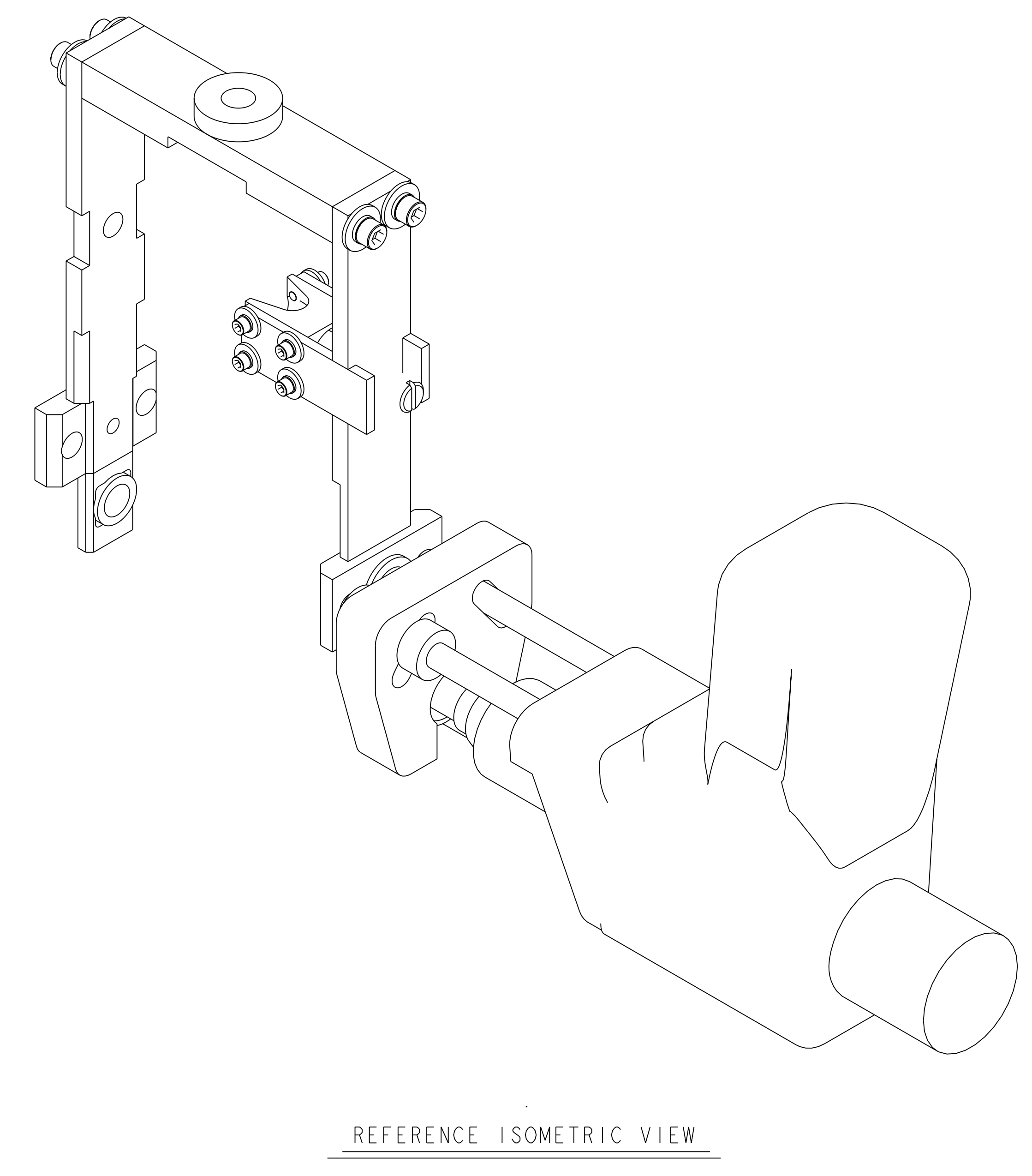
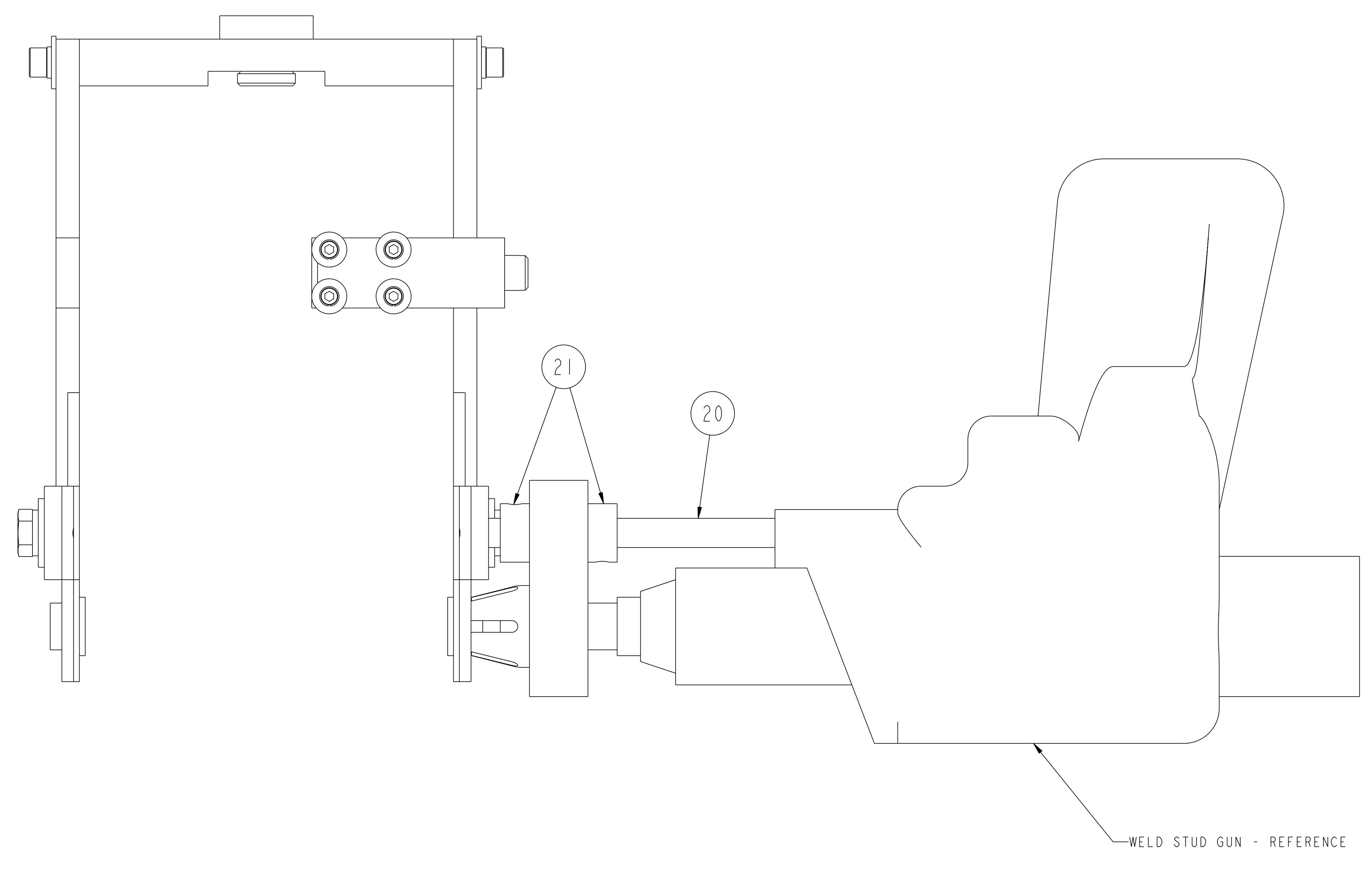
2	21	COMM	5/16 I.D. X 5/8 O.D. X 5/16 W ONE PIECE LOCKING COLLAR	C'STL - ZN PLT	4
2	20	THIS DWG	Ø5/16 X 6" LG GUIDE ROD	ASTM A108	4
2	19	150104	1/4-20UNC-2A X 1/2 LG HEX HEAD CAP SCREW	C'STL - ZN PLT	4
2	18	151363	1/4 SPLIT LOCK WASHER	C'STL - ZN PLT	4
2	17	151347	1/4 FLAT WASHER	C'STL - ZN PLT	4
4	16	151710	#10-24UNC-2A X 3/4 LG HEX SOCKET CAP SCREW	C'STL - ZN PLT	8
4	15	151362	#10 SPLIT LOCK WASHER	C'STL - ZN PLT	8
4	14	151344	#10 FLAT WASHER	C'STL - ZN PLT	8
8	13	151796	#4-40UNC-2A X 3/8 LG HEX SOCKET CAP SCREW	C'STL - ZN PLT	16
8	12	151358	#4 SPLIT LOCK WASHER	C'STL - ZN PLT	16
8	11	151340	#4 FLAT WASHER	C'STL - ZN PLT	16
2	10	COMM	CERAMIC INSULATOR FOR Ø3/8 WELD STUD	CERAMIC	A/R
2	9	COMM	RETAINING RING - Ø5/16 NOMINAL, EXTERNAL TYPE	SAE 1060-1090	4
1	8	SE144-086-8	"VEE" BLOCK PUSH SCREW	SEE DRW	2
2	7	SE144-086-7	"VEE" BLOCK GUIDE PLATE	SEE DRW	4
2	6	SE144-086-6	GUIDE "TEE" PLATE	SEE DRW	4
1	5	SE144-086-5	"VEE" BLOCK	SEE DRW	2
2	4	SE144-086-4	VERTICAL LOWER HALF SUPPORT BAR	SEE DRW	4
2	3	SE144-086-3	VERTICAL UPPER HALF SUPPORT BAR	SEE DRW	4
1	2	SE144-086-2	MOUNTING BUSHING	SEE DRW	2
1	1	SE144-086-1	HORIZONTAL CLAMPING BAR	SEE DRW	2
		THIS DWG	WELD STUD FIXTURE ASSEMBLY		2
01	PART ASSY NO.	DRAWING NO.	NOMENCLATURE OR DESCRIPTION	MATERIAL	QTY REQD

PARTS LIST

COMPUTER GENERATED DRAWING MANUAL CHANGES NOT PERMITTED Pro E	CENTRAL FILES: UNLESS OTHERWISE SPECIFIED DIMENSIONS ARE IN INCHES MACHINE SURFACES BREAK SHARP EDGES .005/.020	PRINCETON PLASMA PHYSICS LABORATORY PRINCETON UNIVERSITY <b>NATIONAL COMPACT STELLARATOR EXPERIMENT</b> MODULAR COIL ASSEMBLY TWISTED RACETRACK WINDING FORM WELD STUD FIXTURE ASSEMBLY			
DO NOT VERIFY INFORMATION BY SCALING DRAWING	TOLERANCES NON-CUMULATIVE DECIMAL-INCH FRACTIONS .XX ±.000 .XXX ±.005 ANGULAR ±.0°-15'	DSN: L. MORRIS CHK: S. RAFTOPOULOS ENGR: J. CHRZANOWSKI SUPV: J. SIEGEL	8-16-04 8-16-04 8-16-04 8-16-04	DRAWING NO: <b>SE144-085</b>	SHEET 1 OF 2 REV 0
WEIGHT 52.2 lbs	MODEL NAME SE144-085	RELEASE LEVEL: Fabrication DWG VERSION NO: 0			

NCSX-SE144-085

NO.	REVISION	BY	CH	SUP	APPROVED	DATE



**RELEASED FOR  
FABRICATION / INSTALLATION**

PPPL Drafting:

FOR NOTES AND BILL OF MATERIAL SEE SHEET 1

RELEASE LEVEL: Fabrication  
DWG VERSION NO: 0

WEIGHT  
52.2 lbs

MODEL NAME  
SE144-085

WELDING  
ENGINEER

COMPUTER GENERATED DRAWING MANUAL CHANGES NOT PERMITTED Pro E	CENTRAL FILES: UNLESS OTHERWISE SPECIFIED	PRINCETON PLASMA PHYSICS LABORATORY PRINCETON UNIVERSITY	
DO NOT VERIFY INFORMATION BY SCALING DRAWING	DIMENSIONS ARE IN INCHES MACHINE SURFACES BREAK SHARP EDGES .005/.020	NATIONAL COMPACT STELLARATOR EXPERIMENT	
TOLERANCES NON-CUMULATIVE	DECIMAL-INCH FRACTIONS	DSN: L. MORRIS	8-16-04
NEXT ASSEMBLY	.XX +/- .000 .XXX +/- .005 ANGULAR +/- .015	CHK: S. RAFTOPOULOS	8-16-04
		ENGR: J. CHRZANOWSKI	8-16-04
		SUPV: J. SIEGEL	8-16-04
		DRAWING NO: <b>SE144-085</b>	
		SHEET 2 OF 2	
		REV 0	

NCSX-SE144-085