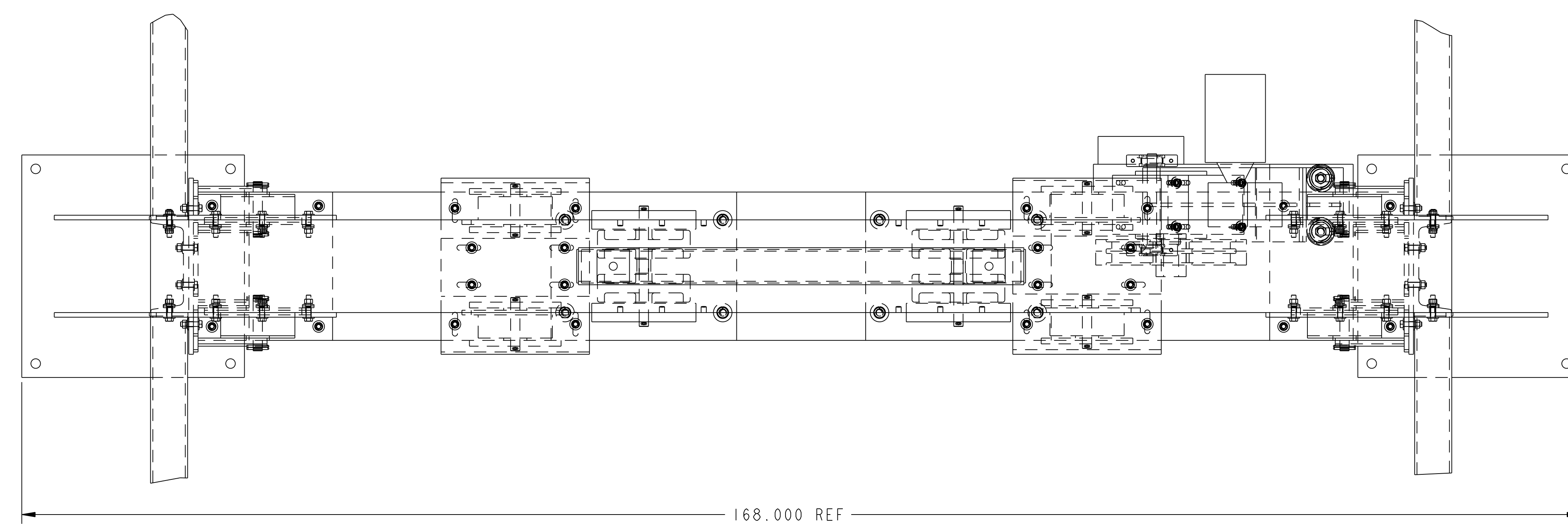
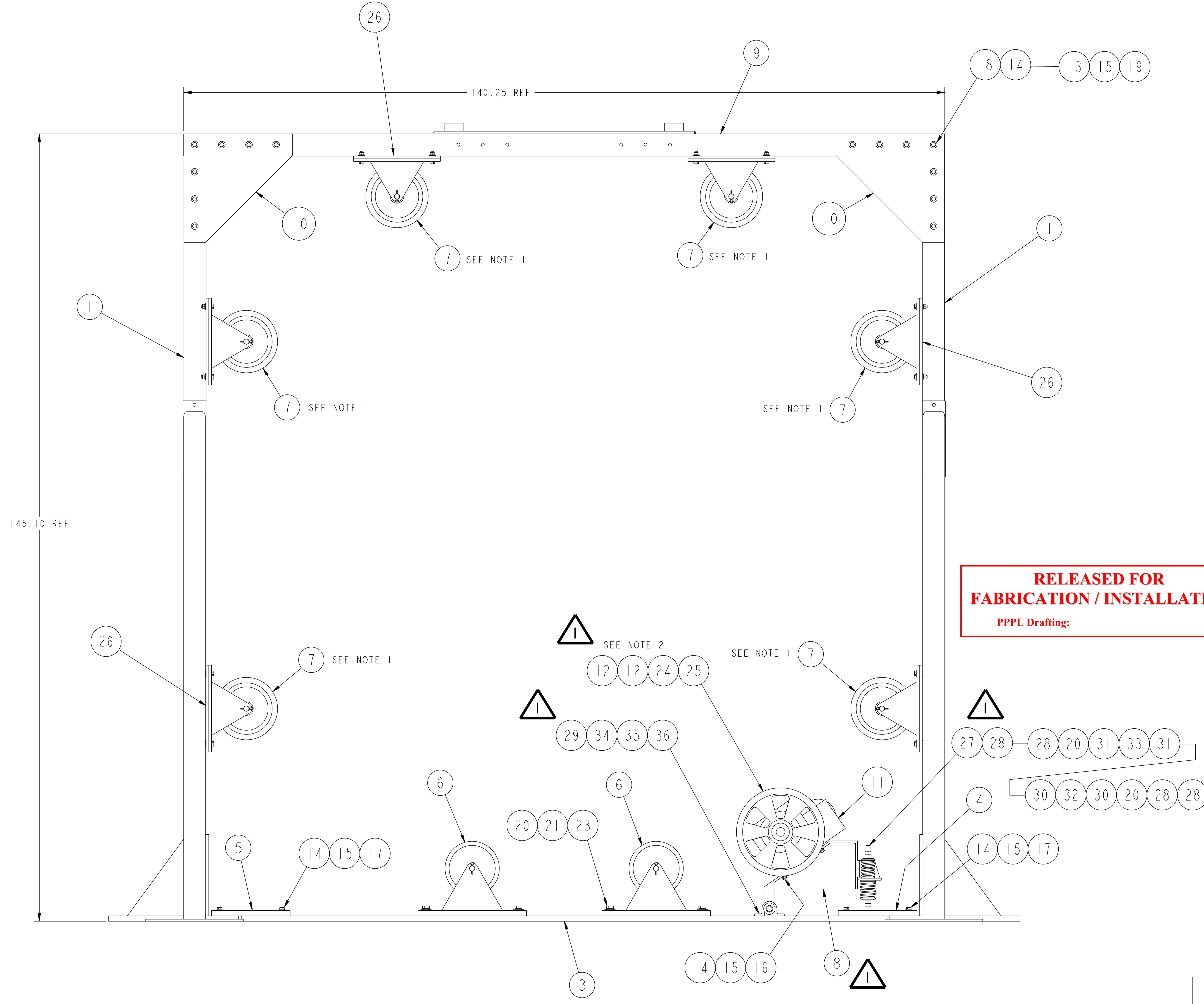


NO.	REVISION	BY	CH	SUP	APPROVED	DATE
1	REVISED PER ECN-4871	LM	SR	JS	S. RAFTOPOULOS	6-23-04



**NOTES**

- FINAL POSITION OF THESE PARTS TO BE DETERMINED AT NEXT ASSEMBLY.
- THE HUB OF ONE SPUR GEAR, PART 12, IS TO BE MACHINED TO 5/8" WIDE. SPUR GEARS, PARTS 12, ARE TO BE MOUNTED FACE TO FACE ON REDUCTOR OUTPUT SHAFT TO PROVIDE A GEAR WIDTH OF 2 1/2". GEAR TEETH ARE TO BE ALIGNED.



**RELEASED FOR FABRICATION / INSTALLATION**  
PPPL Drafting:

4	36	150125	3/8-16 UNC-2A X 1 1/2" LG HEX HD CAP SCREW	C'STL - ZN PLT	16
4	35	151365	3/8 SPLIT LOCK WASHER	C'STL - ZN PLT	16
4	34	151349	3/8 FLAT WASHER	C'STL - ZN PLT	16
2	33	COMM	COMPRESSION SPRING Ø2 11/16 O.D. X 5" LG X Ø5/16" WIRE McMASTER-CARR #96485-K429 OR EO.	C' STL	8
2	32	COMM	COMPRESSION SPRING Ø2 3/16 O.D. X 4" LG X Ø1/4" WIRE McMASTER-CARR #96485-K161 OR EO.	C' STL	8
2	31	THIS DWG	SPRING RETAINING PLATE - TYPE "B" Ø13/16 I.D. X Ø2 3/4 O.D. X 1/4" THK	ASTM A36	8
2	30	THIS DWG	SPRING RETAINING PLATE - TYPE "A" Ø13/16 I.D. X Ø2 3/8 O.D. X 1/4" THK	ASTM A36	8
2	29	COMM	PILLOW BLOCK BEARING ASSEMBLY 1" DIA. McMASTER-CARR #6244K56 OR EQUIVALENT	CAST IRON	8
8	28	150292	3/4-10 UNC-2B HEX NUT	C' STL	32
2	27	THIS DWG	3/4-10 UNC-2A X 13" LG THREADED ROD	C' STL	8
6	26	SE144-017	RETAINING WHEEL ASSEMBLY BASE PLATE	SEE DWG	24
2	25	150939	1/4-20 UNC X 1/4 LG HEX SOCKET SET SCR, CUP POINT	304 S/S	8
1	24	COMM	3/8 SQ. KEY X 2 1/4 LG	304 S/S	4
8	23	150154	3/4-10 UNC X 2 LG HEX HEAD BOLT	C'STL - ZN PLT	32
4	22	NS150162	3/4-10 UNC X 1 1/2 LG HEX HEAD BOLT	C'STL - ZN PLT	16
8	21	151370	3/4 SPLIT LOCK WASHER	C'STL - ZN PLT	32
12	20	151353	3/4 FLAT WASHER	C'STL - ZN PLT	48
92	19	150289	1/2-13 UNC-2B HEX NUT	C'STL - ZN PLT	368
28	18	150142	1/2-13 UNC X 2 1/2 LG HEX HEAD BOLT	C'STL - ZN PLT	112
72	17	150141	1/2-13 UNC X 2 LG HEX HEAD BOLT	C'STL - ZN PLT	288
4	16	150138	1/2-13 UNC X 1 1/4 LG HEX HEAD BOLT	C'STL - ZN PLT	16
104	15	151367	1/2 SPLIT LOCK WASHER	C'STL - ZN PLT	416
164	14	151351	1/2 FLAT WASHER	C'STL - ZN PLT	656
36	13	NS151360	SQUARE BEVEL WASHER - 1/2 NOM	MALL. IRON	144
2	12	COMM	SPUR GEAR - 8 PITCH, 128 TEETH, 14 1/2" P.A., Ø1.625 BORE	CAST IRON	8
1	11	COMM	DOUBLE REDUCTION FLANGED REDUCER BOSTON GEAR #RFWA738B-400SPT-B5-G1-P26 OR EQUIVALENT		4
4	10	SE144-014-2	SUPPORT FRAME GUSSET	SEE DWG	16
1	9	SE144-014-01	HORIZONTAL CHANNEL - MC10" X 33.6#	SEE DWG	4
1	8	SE144-012	DRIVE MOTOR SUPPORT STAND WELDMENT	SEE DWG	4
12	7	SE144-010-02	RETAINING WHEEL ASSEMBLY	SEE DWG	48
2	6	SE144-010-01	MAIN SUPPORT WHEEL ASSEMBLY	SEE DWG	8
1	5	SE144-009-9	SPLICE PLATE	SEE DWG	4
1	4	SE144-009-04	SPLICE PLATE WELDMENT	SEE DWG	4
1	3	SE144-009-03	MAIN BASE PLATE WELDMENT	SEE DWG	4
2	2	SE144-009-02	OUTRIGGER WELDMENT	SEE DWG	8
2	1	SE144-009-01	UPRIGHT WELDMENT	SEE DWG	8
		THIS DWG	WINDING SUPPORT FRAME ASSEMBLY		4

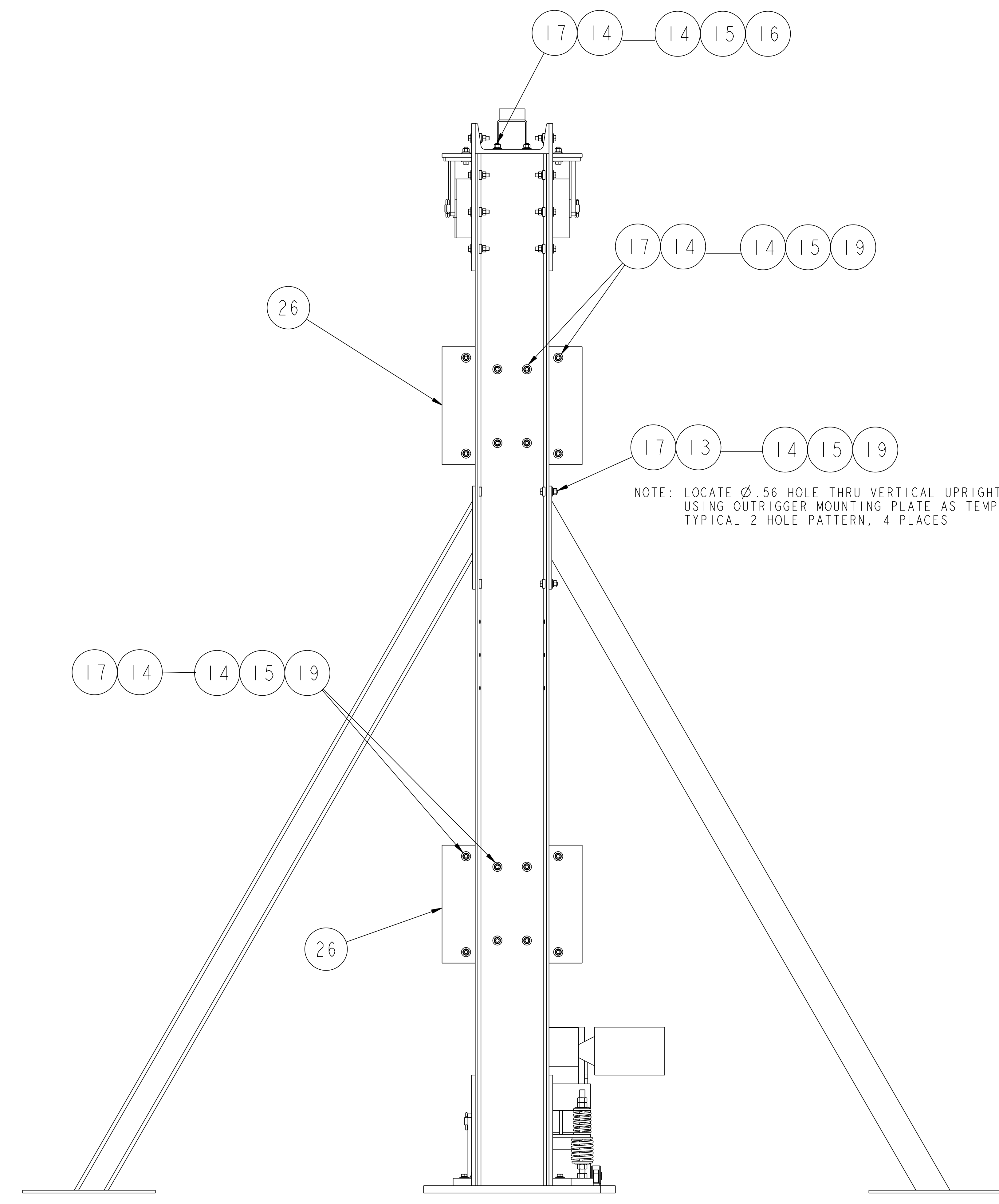
QTY	PART NO.	DRAWING NO.	NOMENCLATURE OR DESCRIPTION	MATERIAL	QTY REQD
PARTS LIST					
COMPUTER GENERATED DRAWING. MANUAL CHANGES NOT PERMITTED.					
CENTRAL FILES: PRINCETON PLASMA PHYSICS LABORATORY, PRINCETON UNIVERSITY					
UNLESS OTHERWISE SPECIFIED: NATIONAL COMPACT STELLARATOR EXPERIMENT					
DIMENSIONS ARE IN INCHES. MACHINE SURFACES UNLESS OTHERWISE SPECIFIED.					
DO NOT VERIFY INFORMATION BY SCALING DRAWING.					
PROJ: SE144-008					
SCALE: 1/8"					
TOLERANCES NON-CUMULATIVE:					
DECIMAL-INCH FRACTIONS: DSN: L. MORRIS 12-23-03 DRAWING NO: 12-23-03					
NEXT ASSEMBLY: CHK: S. RAFTOPOULOS 12-23-03					
ENGR: S. RAFTOPOULOS 12-23-03					
SUPV: J. SIEGEL 12-23-03					
SHEET 1 OF 2					
REV 1					

WEIGHT	5408.1 lbs
MODEL NAME	SE144-008
WELDING ENGINEER	

RELEASE LEVEL: Fabrication  
DWG VERSION NO:

NCSX-SE144-008

NO.	REVISION	BY	CH	SUP	APPROVED	DATE



**RELEASED FOR  
FABRICATION / INSTALLATION**  
PPPL Drafting:

FOR NOTES AND B/M SEE SHEET 1

**RELEASE LEVEL: Fabrication**  
**DWG VERSION NO:**

WEIGHT 5408.1 lbs	COMPUTER GENERATED DRAWING MANUAL CHANGES NOT PERMITTED Pro E	CENTRAL FILES: UNLESS OTHERWISE SPECIFIED	PRINCETON PLASMA PHYSICS LABORATORY PRINCETON UNIVERSITY	
	MODEL NAME SE144-008	DO NOT VERIFY INFORMATION BY SCALING DRAWING	NATIONAL COMPACT STELLARATOR EXPERIMENT	
SCALE: 1/8	TOLERANCES NON-CUMULATIVE	MODULAR COIL ASSEMBLY		
WELDING ENGINEER	DECIMAL-INCH FRACTIONS	WINDING SUPPORT FRAME		
	.XX ±.030 0°-120° ±.125	DSN: L. MORRIS	DRAWING NO:	
	.XXX ±.005 120°-120° ±.125	ENGR: S. RAFTOPOULOS	<b>SE144-008</b>	
	ANGULAR ±.0°-15° OVER 120° ±.125	SUPV:	SHEET 2 OF 2 REV 1	

NCSX-SE144-008