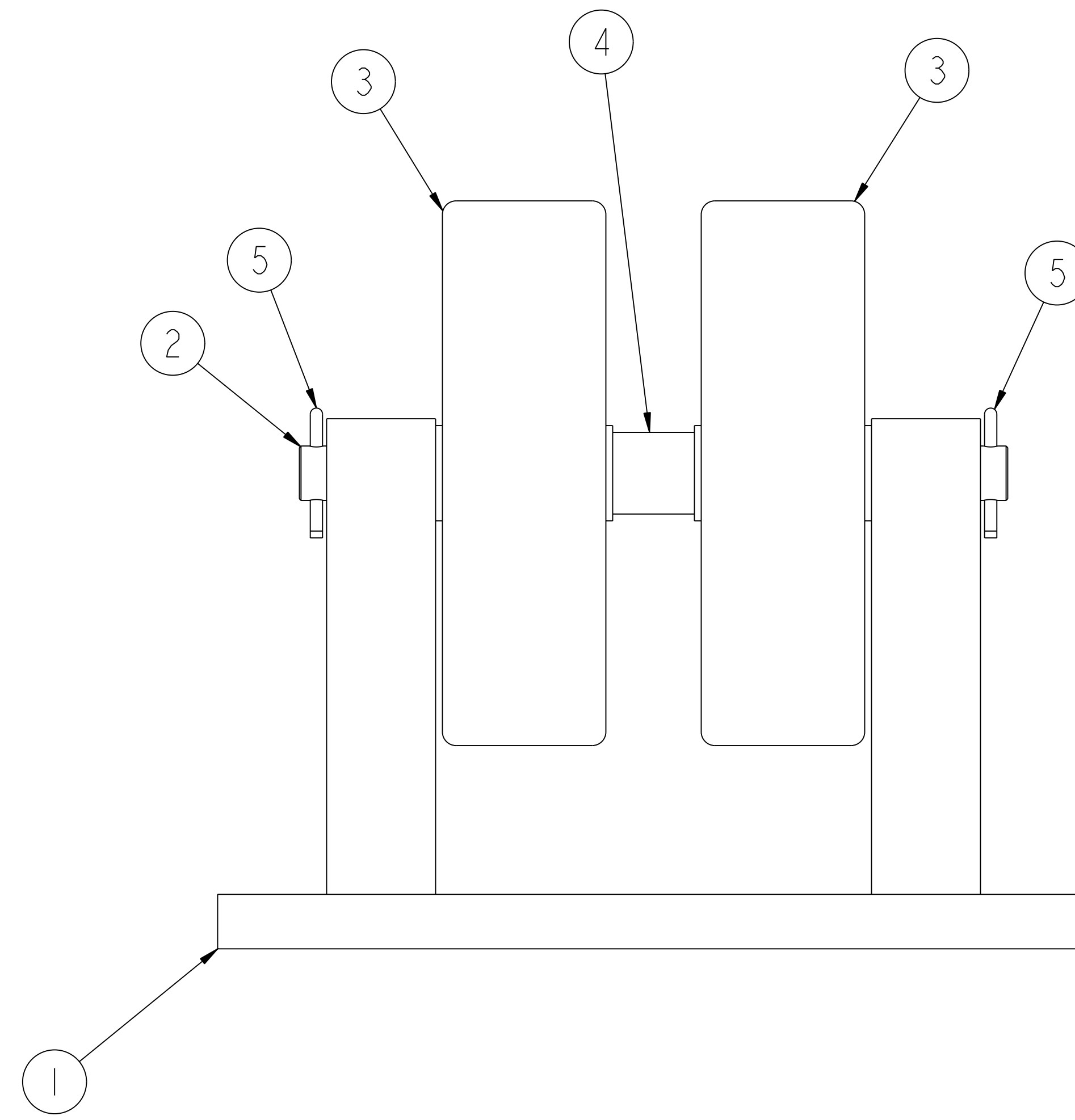
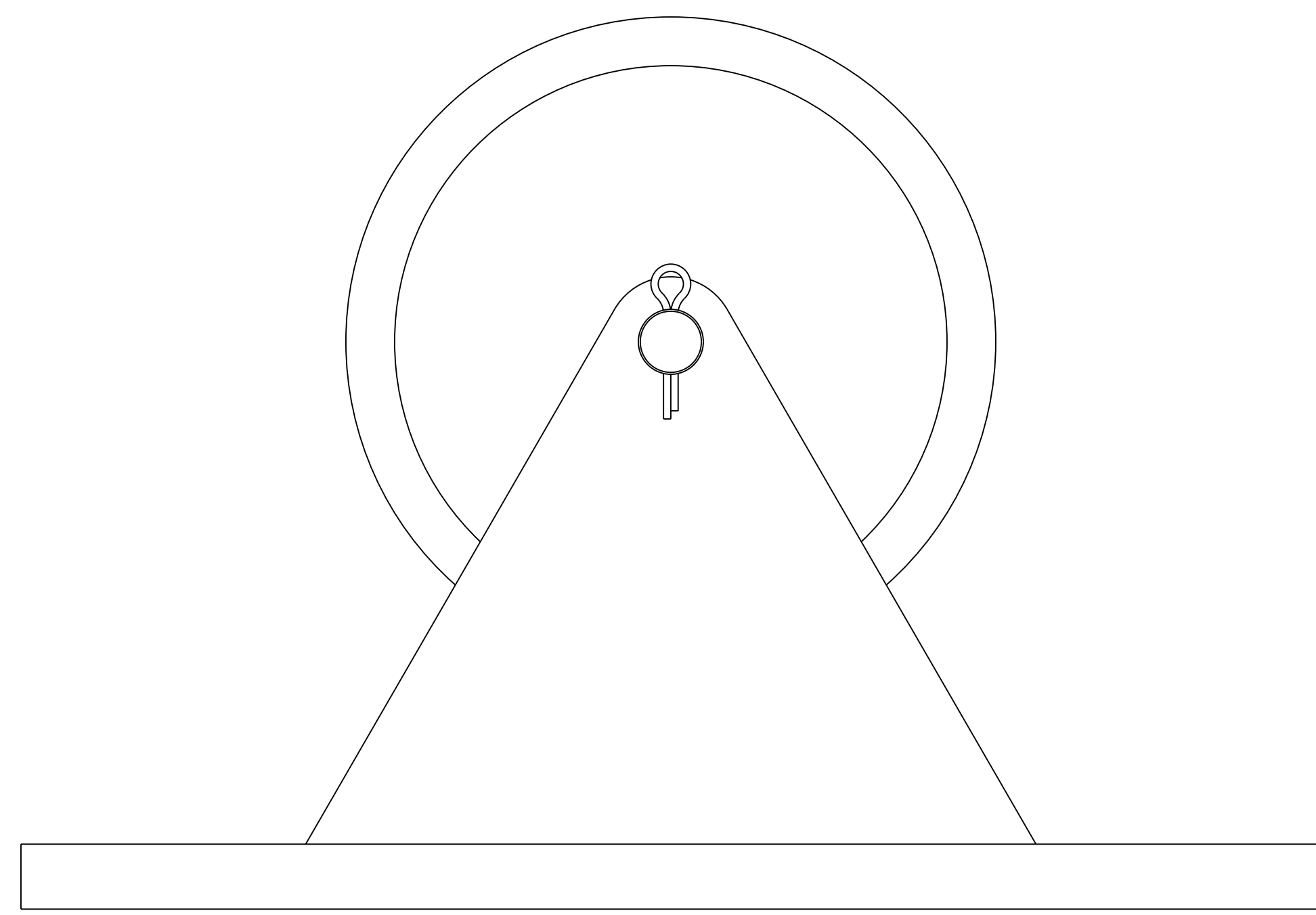
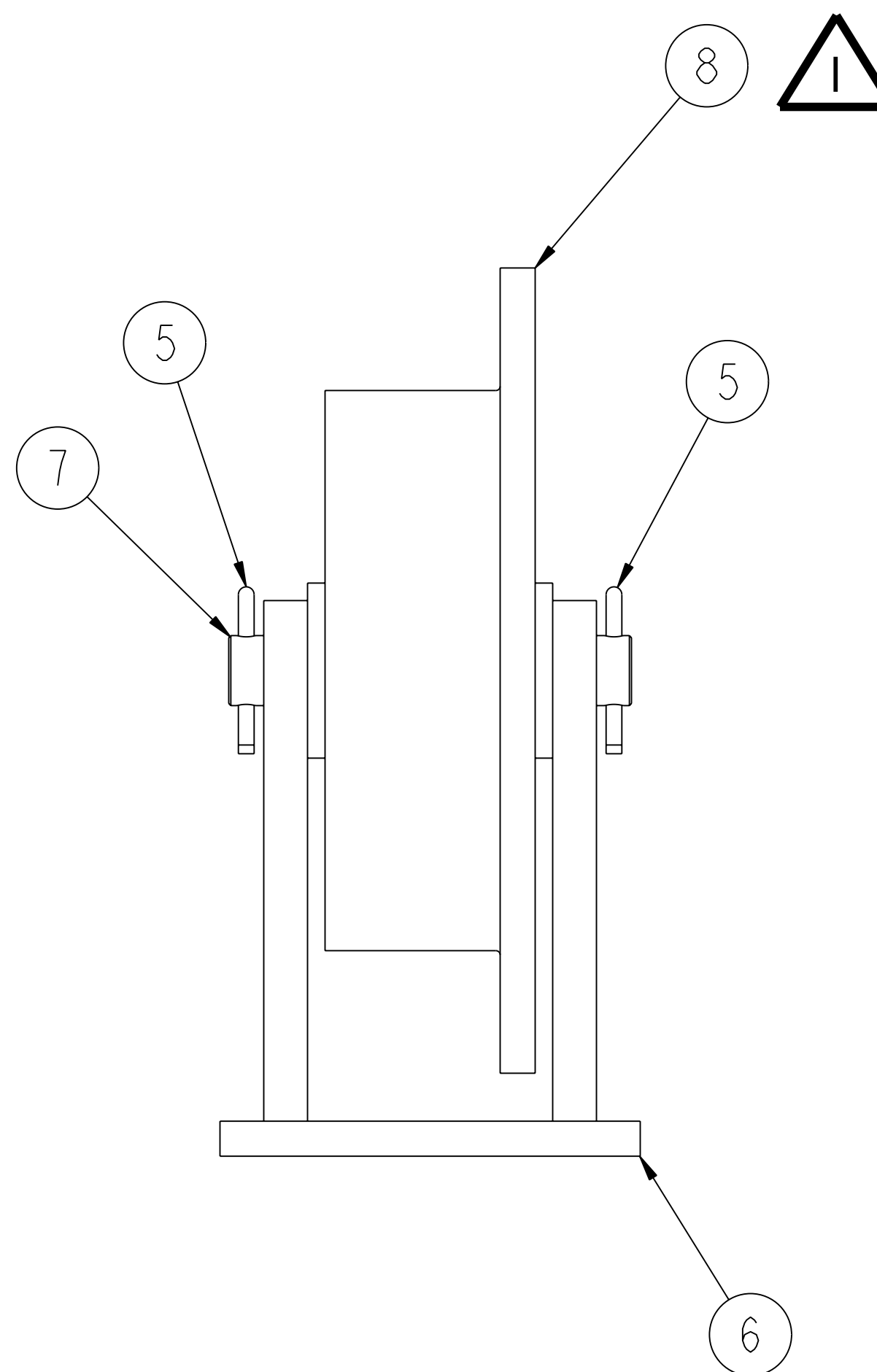
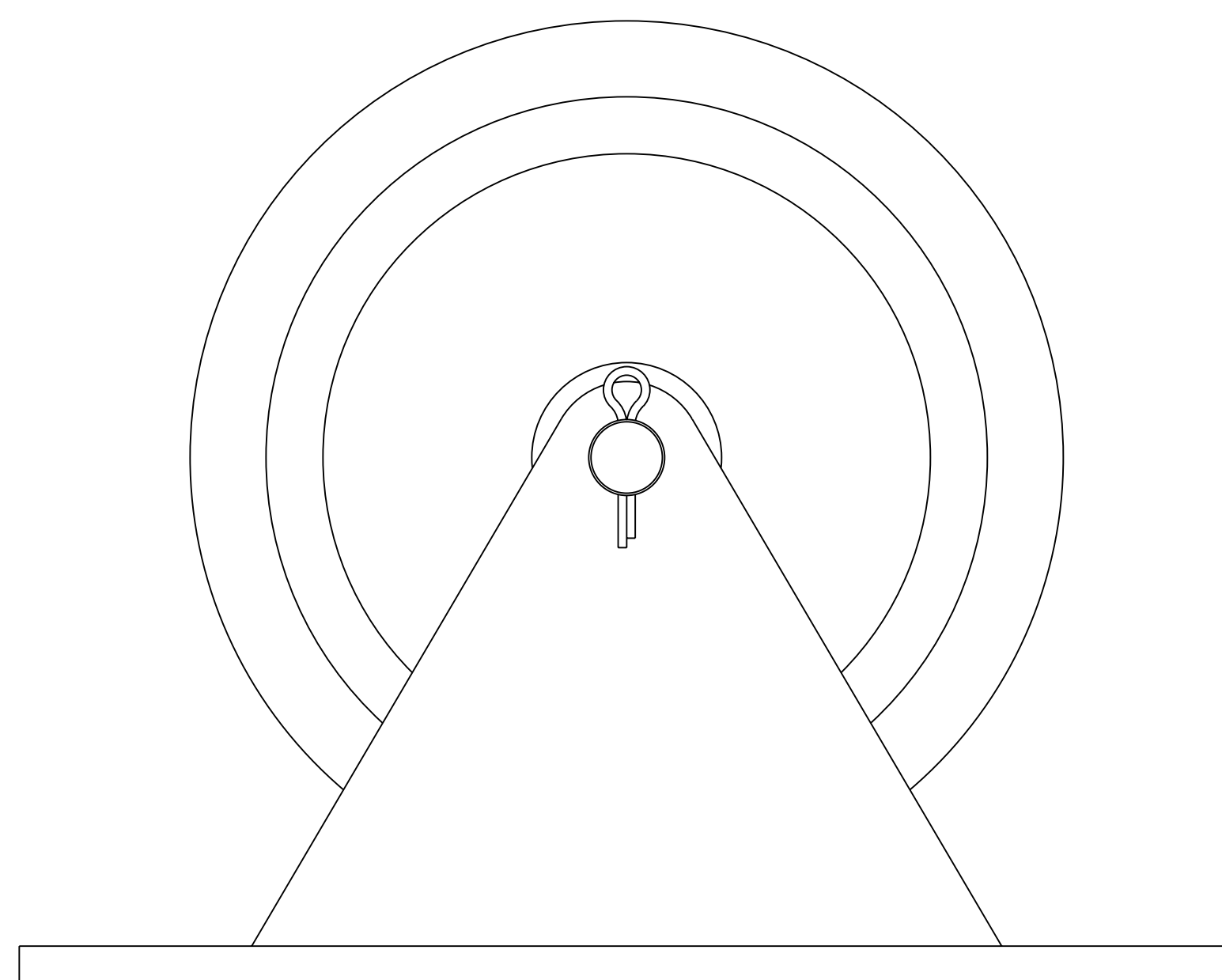


NO.	REVISION	BY	CH	SUP	APPROVED	DATE
1	REVISED PER ECN-4854	LM	SR	JS	J. CHRZANOWSKI	04-28-04

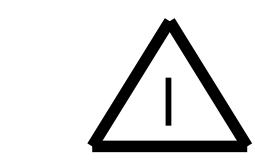


01 MAIN SUPPORT WHEEL ASSEMBLY



02 RETAINING WHEEL ASSEMBLY

**RELEASED FOR  
FABRICATION / INSTALLATION**  
PPPL Drafting:



1	8	SE144-014-02	SINGLE FLANGED TRACK WHEEL WELDMENT	48		
1	7	SE144-014-4	RETAINING WHEEL AXLE	SEE DWG 48		
1	6	SE144-011-02	VERTICAL WHEEL BRACKET WELDMENT	SEE DWG 48		
2	5	COMM	COTTER PIN - $\phi 1/4$ x 1 1/2" LG	304 S/S 112		
1	4	SE144-014-5	SUPPORT WHEEL SPACER	SEE DWG 8		
2	3	COMM	PHENOLIC WHEEL - $\phi 10$ " x 3" WIDE (2600# CAP.) McMASTER-CARR OR EQ.	16		
1	2	SE144-014-3	SUPPORT WHEEL AXLE	SEE DWG 8		
1	1	SE144-011-01	HORIZONTAL WHEEL BRACKET WELDMENT	SEE DWG 8		
		THIS DWG	RETAINING WHEEL ASSEMBLY	48		
		THIS DWG	MAIN SUPPORT WHEEL ASSEMBLY	8		
02	01	PART NO.	DRAWING NO.	NOMENCLATURE OR DESCRIPTION	MATERIAL	QTY RECD

PARTS LIST

WEIGHT 78.8 lbs	COMPUTER GENERATED DRAWING MANUAL CHANGES NOT PERMITTED	CENTRAL FILES: UNLESS OTHERWISE SPECIFIED	PRINCETON PLASMA PHYSICS LABORATORY PRINCETON UNIVERSITY	
	DO NOT VERIFY INFORMATION BY SCALING DRAWING	BREAK SHARP EDGES .005/.020	NATIONAL COMPACT STELLARATOR EXPERIMENT	
MODEL NAME SE144-010	SCALE: 1/2	TOLERANCES NON-CUMULATIVE	DSN: L. MORRIS	DRAWING NO:
WELDING ENGINEER	NEXT ASSEMBLY	DECIMAL-INCH FRACTIONS .XX +/- .030 .XXX +/- .005 ANGULAR +/- .05	CHK: S. RAFTOPOULOS ENGR: S. RAFTOPOULOS SUPV: J. SIEGEL	SE144-010
			SHEET 1 OF 1	REV 1

**RELEASE LEVEL: Fabrication**  
**DWG VERSION NO:**