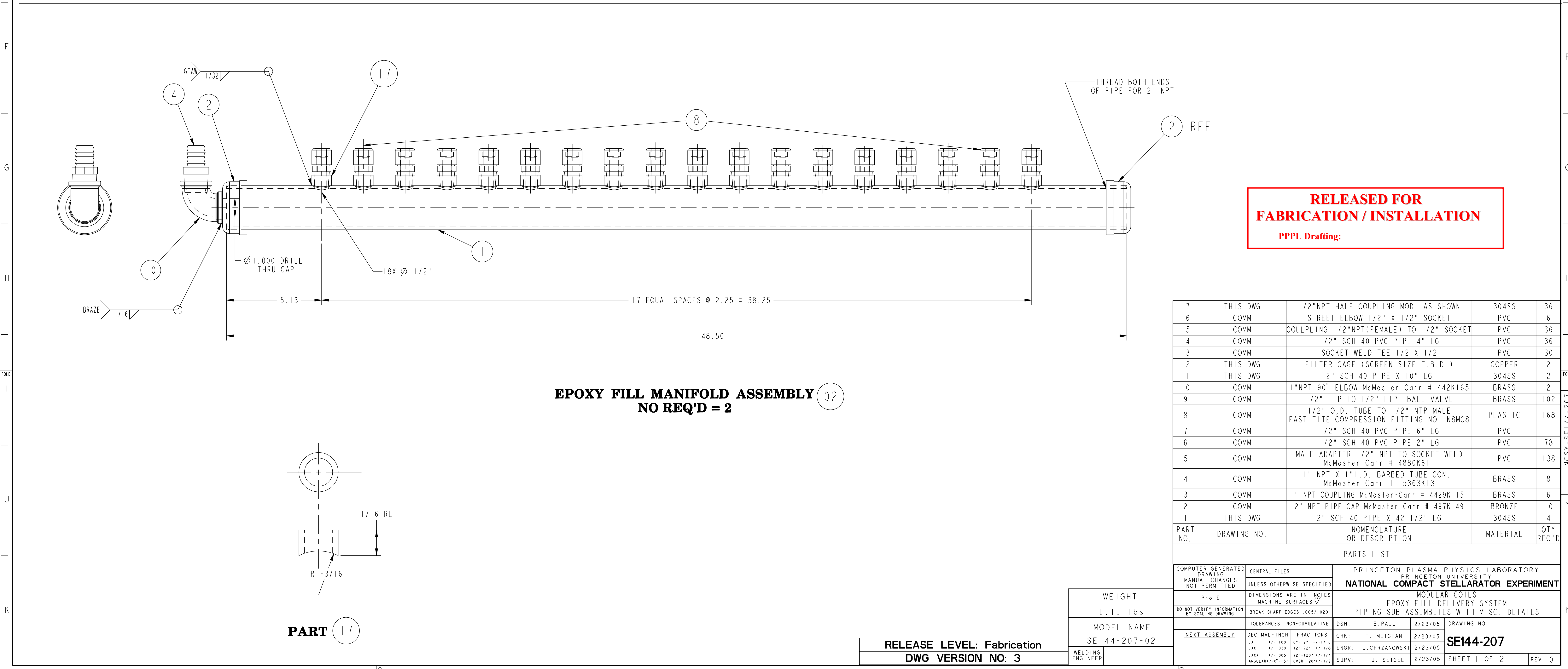


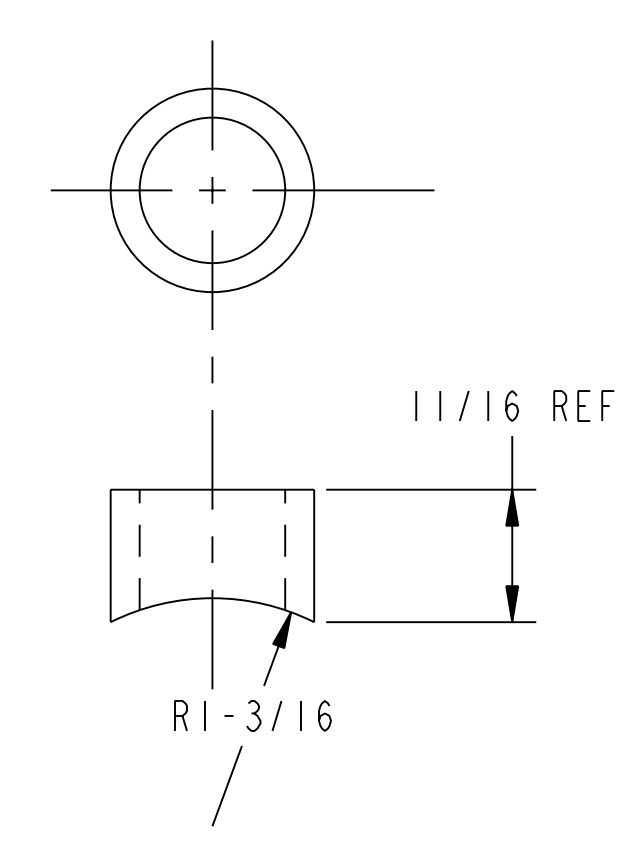
VACUUM MANIFOLD ASSEMBLY (01)
NO. REQ'D = 2



EPOXY FILL MANIFOLD ASSEMBLY (02)
NO. REQ'D = 2

**RELEASED FOR
 FABRICATION / INSTALLATION**
 PPPL Drafting:

PART NO.	DRAWING NO.	NOMENCLATURE OR DESCRIPTION	MATERIAL	QTY. REQ'D
17	THIS DWG	1/2"NPT HALF COUPLING MOD. AS SHOWN	304SS	36
16	COMM	STREET ELBOW 1/2" X 1/2" SOCKET	PVC	6
15	COMM	COUPLING 1/2"NPT(FEMALE) TO 1/2" SOCKET	PVC	36
14	COMM	1/2" SCH 40 PVC PIPE 4" LG	PVC	36
13	COMM	SOCKET WELD TEE 1/2 X 1/2	PVC	30
12	THIS DWG	FILTER CAGE (SCREEN SIZE T.B.D.)	COPPER	2
11	THIS DWG	2" SCH 40 PIPE X 10" LG	304SS	2
10	COMM	1"NPT 90° ELBOW McMaster Carr # 442K165	BRASS	2
9	COMM	1/2" FTP TO 1/2" FTP BALL VALVE	BRASS	102
8	COMM	1/2" O.D. TUBE TO 1/2" NTP MALE FAST TITE COMPRESSION FITTING NO. N8M8C	PLASTIC	168
7	COMM	1/2" SCH 40 PVC PIPE 6" LG	PVC	
6	COMM	1/2" SCH 40 PVC PIPE 2" LG	PVC	78
5	COMM	MALE ADAPTER 1/2" NPT TO SOCKET WELD McMaster Carr # 4880K61	PVC	138
4	COMM	1" NPT X 1" I.D. BARBED TUBE CON. McMaster Carr # 5363K13	BRASS	8
3	COMM	1" NPT COUPLING McMaster-Carr # 4429K115	BRASS	6
2	COMM	2" NPT PIPE CAP McMaster Carr # 497K149	BRONZE	10
1	THIS DWG	2" SCH 40 PIPE X 42 1/2" LG	304SS	4



PART (17)

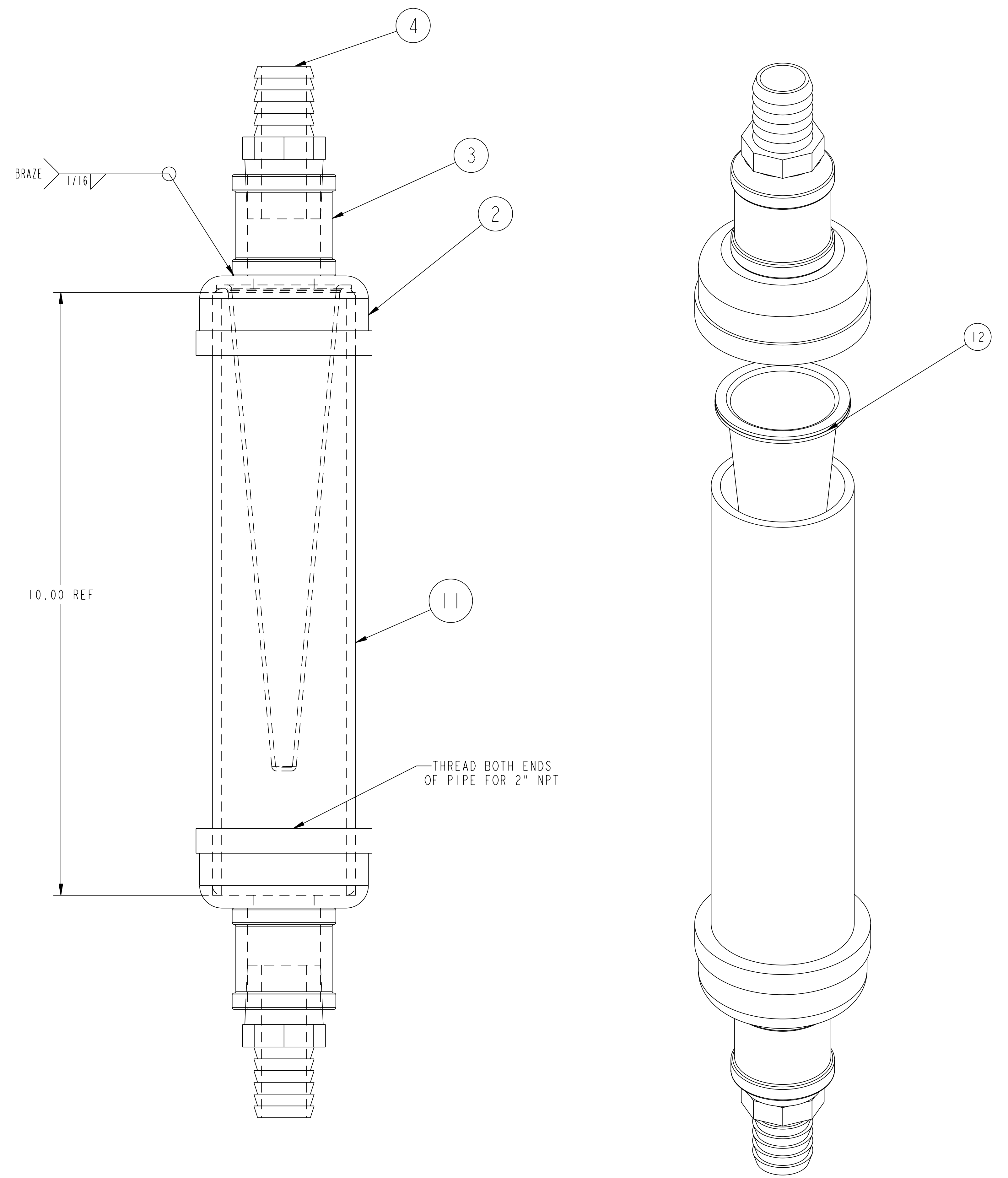
WEIGHT	[.] lbs
MODEL NAME	SE144-207-02
WELDING ENGINEER	

RELEASE LEVEL: Fabrication
DWG VERSION NO: 3

COMPUTER GENERATED DRAWING. MANUAL CHANGES NOT PERMITTED	CENTRAL FILES: UNLESS OTHERWISE SPECIFIED	PRINCETON PLASMA PHYSICS LABORATORY PRINCETON UNIVERSITY	
DO NOT VERIFY INFORMATION BY SCALING DRAWING	BREAK SHARP EDGES .005/.020	NATIONAL COMPACT STELLARATOR EXPERIMENT	
TOLERANCES NON-CUMULATIVE	DECIMAL-INCH FRACTIONS	DSN: B. PAUL 2/23/05	DRAWING NO: SE144-207
NEXT ASSEMBLY	CHK: T. MEIGHAN 2/23/05	ENGR: J. CHRZANOWSKI 2/23/05	SHEET 1 OF 2
	SUPV: J. SEIGEL 2/23/05		REV 0

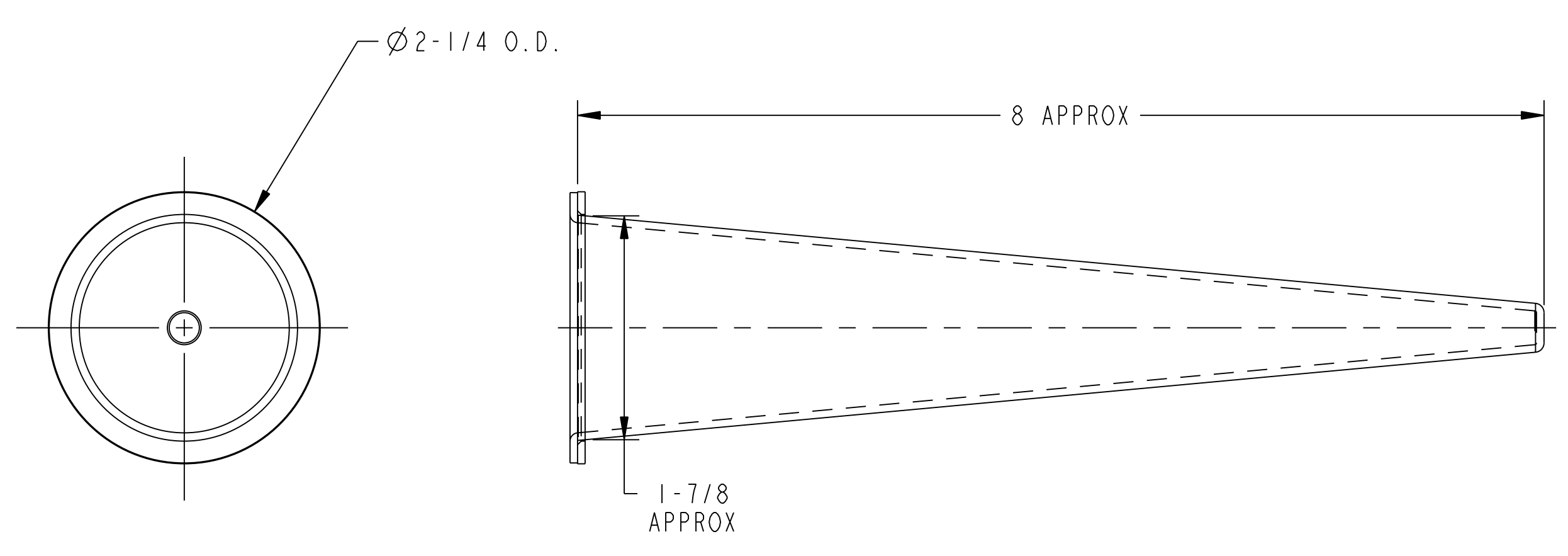
NCSX-SE144-207

NO.	REVISION	BY	CH	SUP	APPROVED	DATE

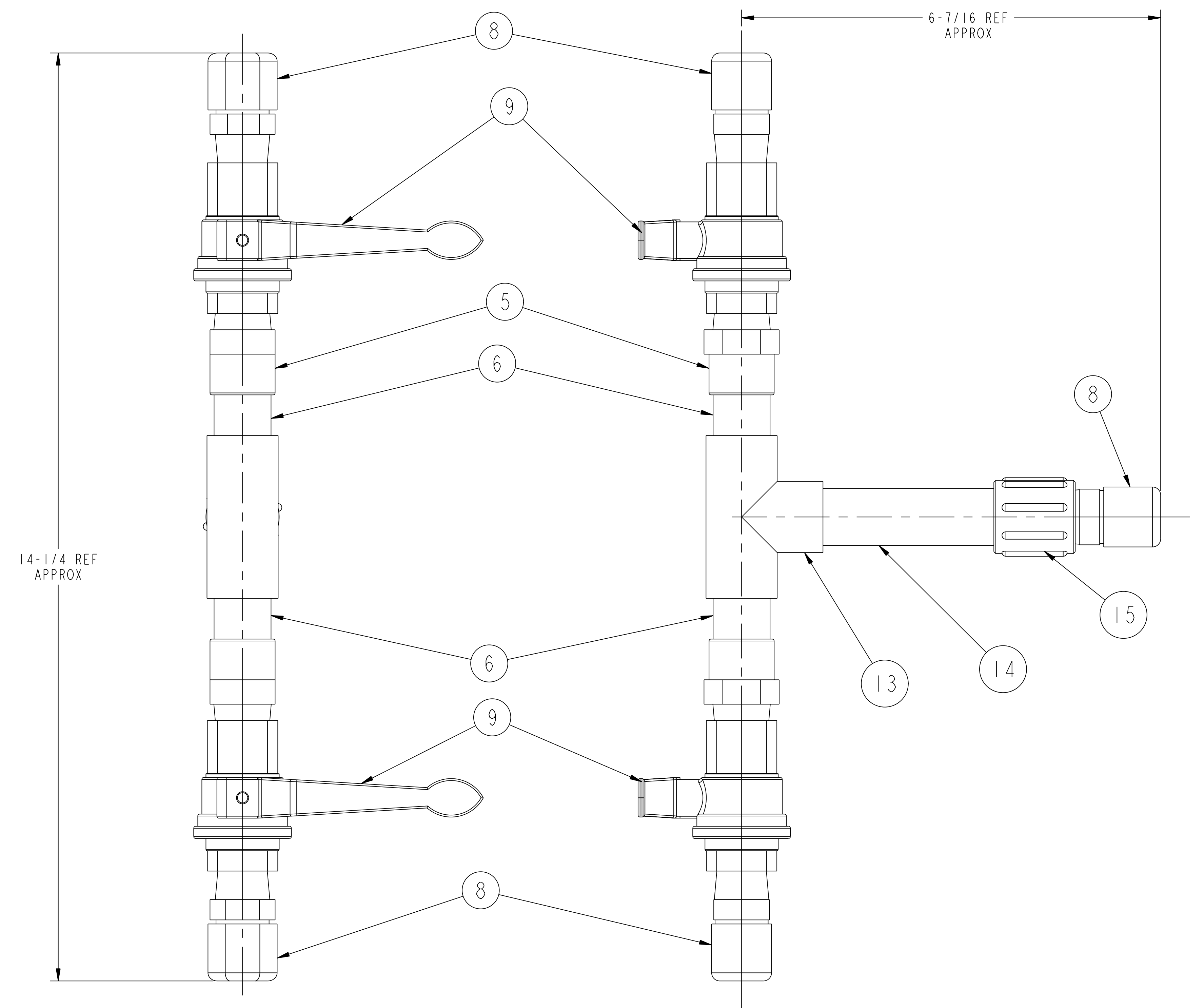


EPOXY FILTER ASS'Y
NO. REQ'D = 2 (03)

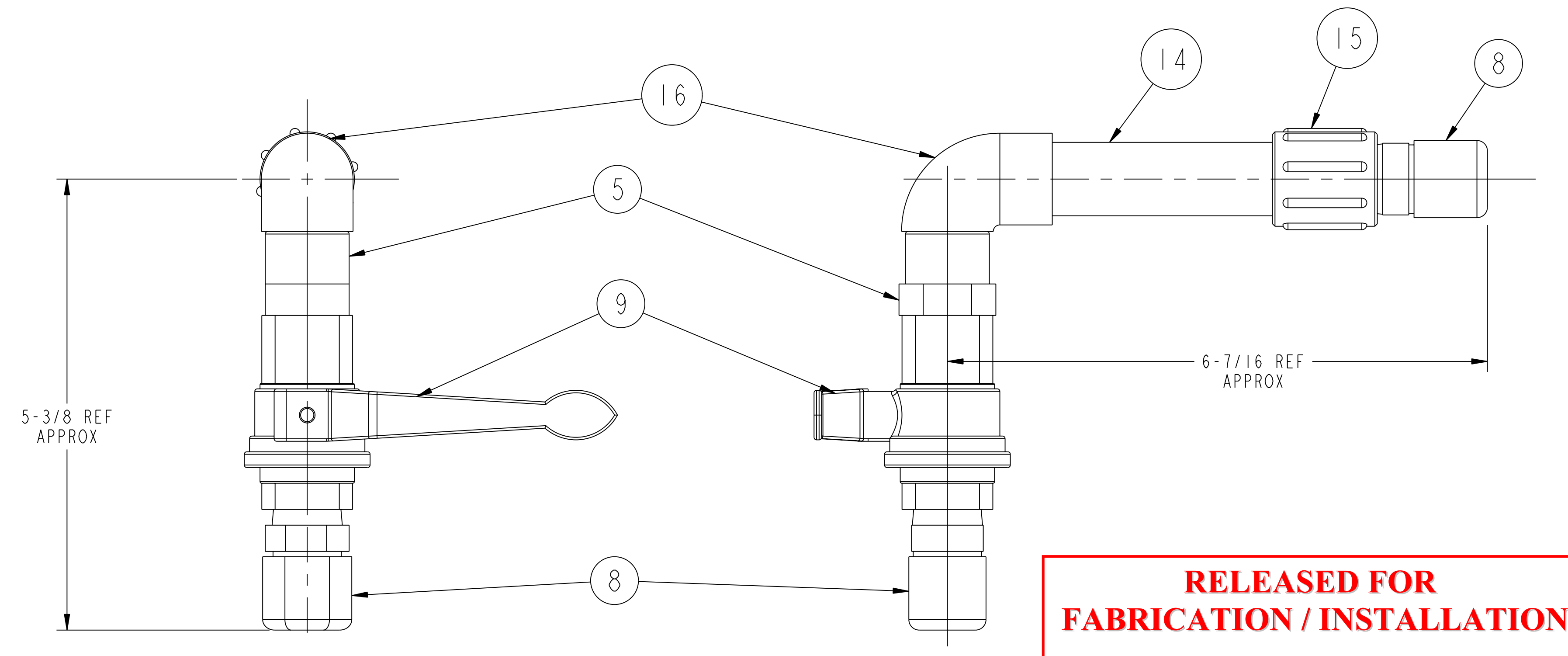
EXPLODED ISO VIEW



FILTER CAGE
NO. REQ'D = 2 (12)



TYP TWO VALVE ASS'Y
NO. REQ'D = 30 (04)



TYP ONE VALVE ASS'Y
NO. REQ'D = 12 (05)

RELEASED FOR FABRICATION / INSTALLATION
PPPL Drafting:

RELEASE LEVEL: Fabrication
DWG VERSION NO: 3

WEIGHT	[.] lbs
MODEL NAME	SE144-207-02
WELDING ENGINEER	

COMPUTER GENERATED DRAWING MANUAL CHANGES NOT PERMITTED Pro E	CENTRAL FILES: UNLESS OTHERWISE SPECIFIED DIMENSIONS ARE IN INCHES MACHINE SURFACES BREAK SHARP EDGES .005/.020	PRINCETON PLASMA PHYSICS LABORATORY PRINCETON UNIVERSITY NATIONAL COMPACT STELLARATOR EXPERIMENT	
DO NOT VERIFY INFORMATION BY SCALING DRAWING	TOLERANCES NON-CUMULATIVE DECIMAL-INCH FRACTIONS .XX +/- .000 .XXX +/- .005 ANGULAR +/- .05	DSN: B. PAUL 2/23/05 CHK: T. MEIGHAN 2/23/05 ENGR: J. CHRZANOWSKI 2/23/05 SUPV: J. SEIGEL 2/23/05	DRAWING NO: MODULAR COILS EPOXY FILL DELIVERY SYSTEM PIPING SUB-ASSEMBLIES WITH MISC DETAILS SE144-207 SHEET 2 OF 2 REV 0

NCSX-SE144-207