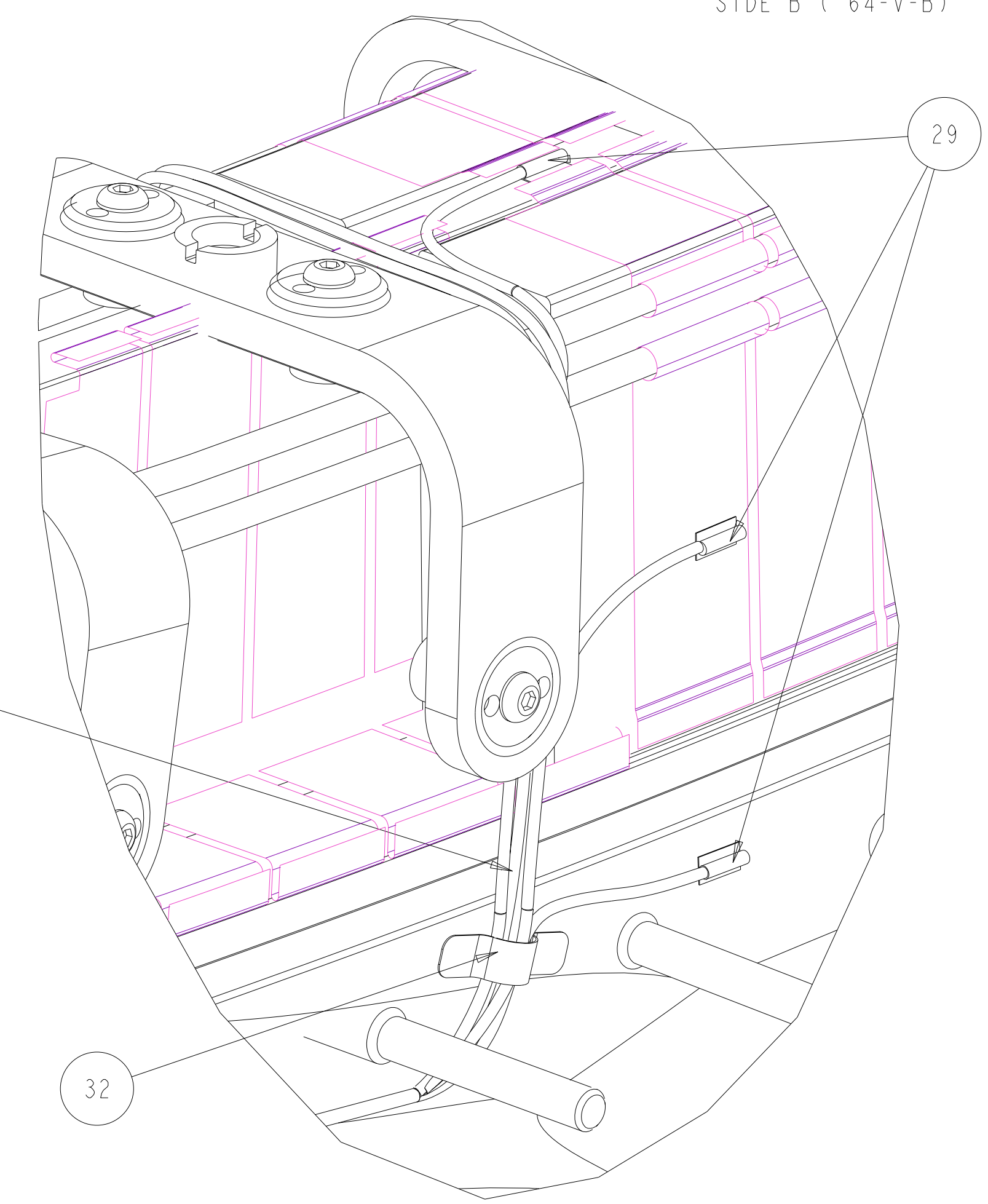


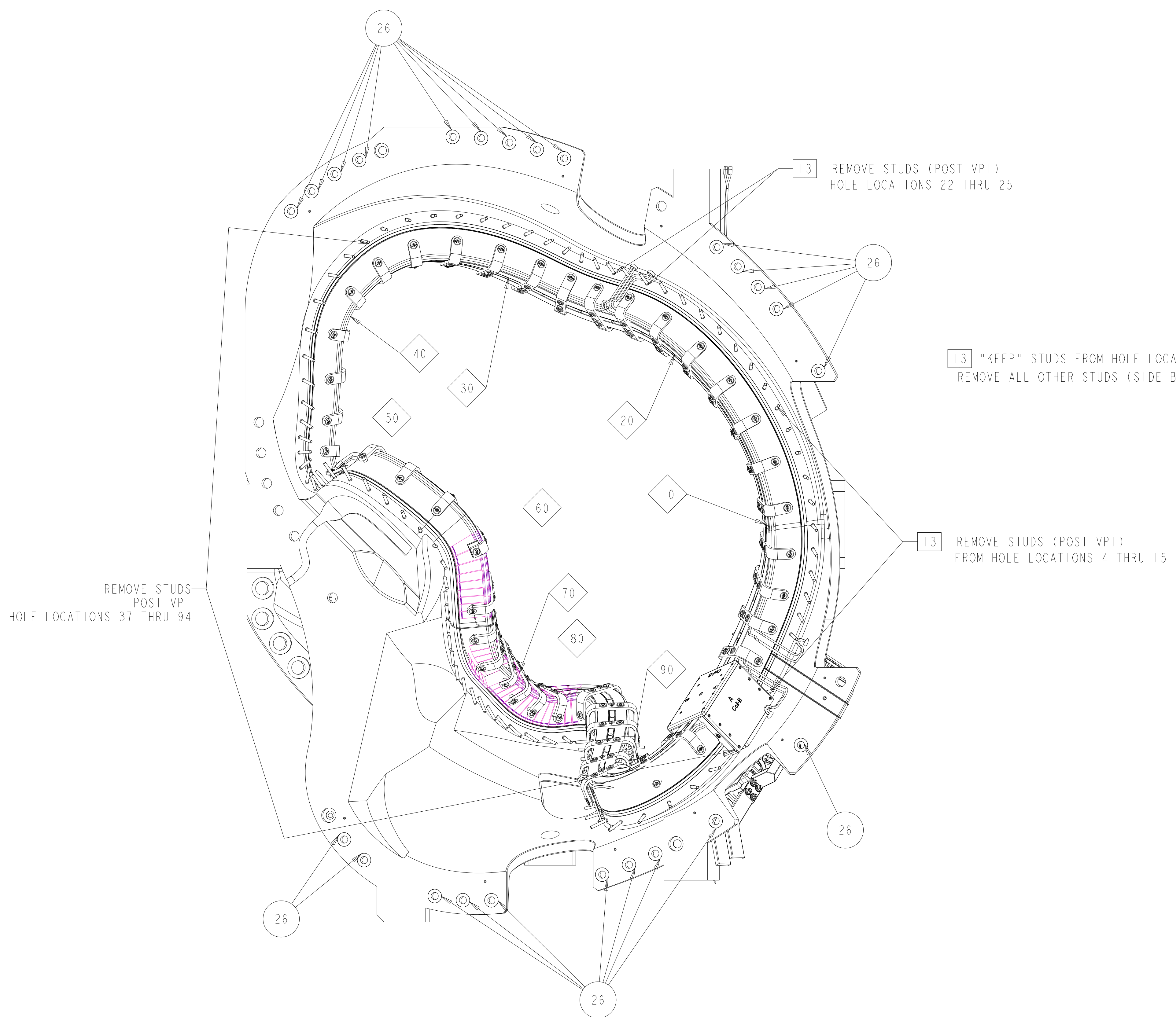
**CUT-AWAY VIEW SHOWING WINDING
 INSTALLATION SEQUENCE (SIDE B)**
 SCALE 0.500

COLOR CODE OR IDENTIFY CABLE WITH
 HOLE NUMBER ASSOCIATED AND LOCATION.
 BUNDLE FIBER OPTIC STRAIN SENSOR CABLE
 AND SECURE WITH CLAMP, F/N 33, AS REQUIRED.
 EXIT COIL WITH COOLING TUBES.

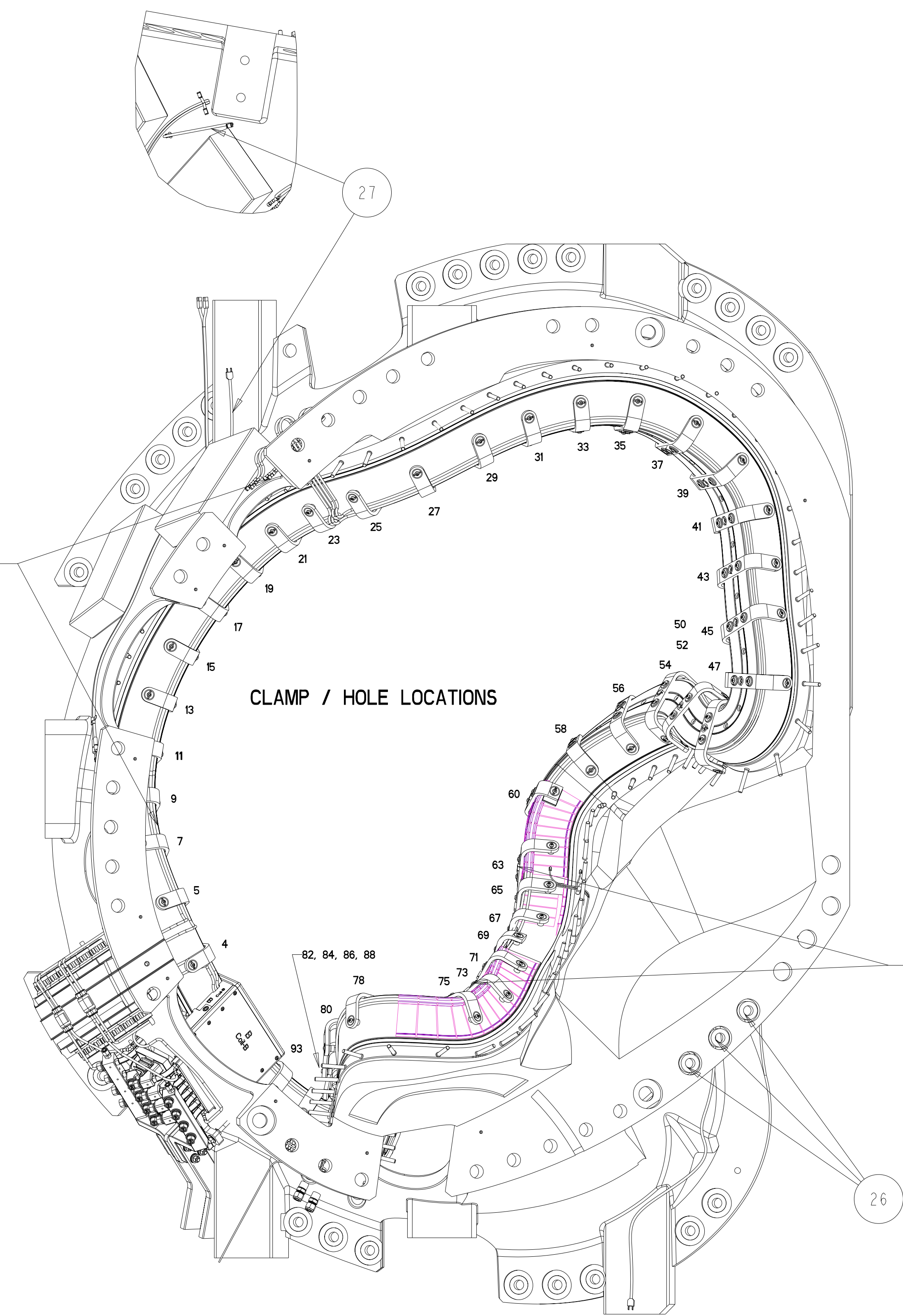


LOCATE STRAIN SENSORS AND LABEL AS SHOWN
 1 ON TOP OF TEE (64 T-TOP)
 2 EACH ON SIDE OF CHILL PLATES
 SIDE A (64-B-A)
 SIDE B (64-B-B)
 2 EACH ALONG FORM BELOW VP1 GROOVE
 SIDE A (64-V-A)
 SIDE B (64-V-B)

DETAIL A
 SCALE 1.000



SIDE "A" VIEW



SIDE "B" VIEW

SUGGESTED STRESS SENSOR LOCATION
 HIGH STRESS REGION ON PLANE
 NORMAL TO THE WINDING LAW
 BETWEEN HOLE LOCATIONS 63 - 73
 SEE DETAIL "A"

UT-BATTELLE		Oak Ridge National Laboratory managed for the DEPARTMENT OF ENERGY under U.S. GOVERNMENT contract DE-AC05-00OR22725 UT-BATTELLE, LLC, Oak Ridge, Tennessee	
NATIONAL COMPACT STELLARATOR EXPERIMENT			
MCWF TYPE "B" FULL COIL ASSEMBLY			
VERSION NO. 23+	PLANT X-10	BLDG 5700	FL SHT OF TYPE CLASS 3 2 2 S U
RELEASE LEVEL WIP	SEI40-102		REV 0

H
G
F
E
D
C
B
A