

RELEASED FOR
FABRICATION / INSTALLATION
PROPERTY OF Jerry Siegel

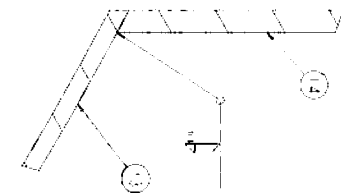
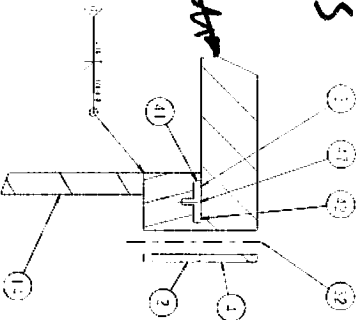
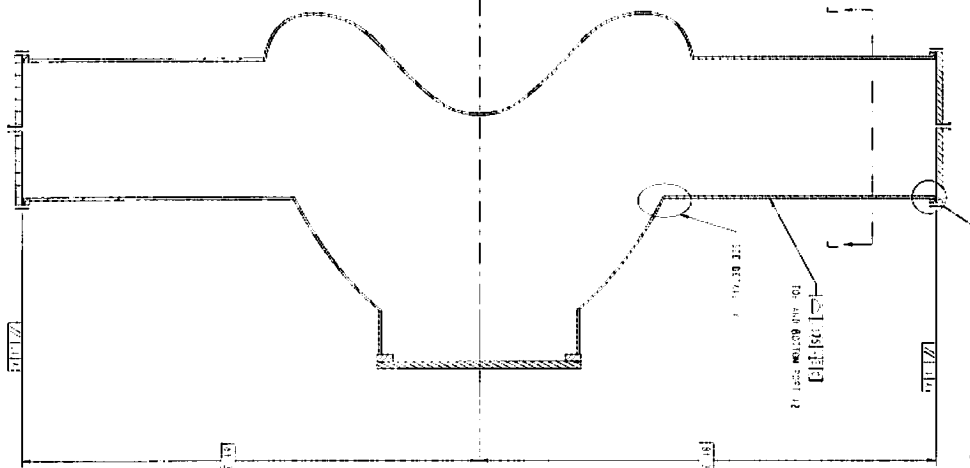
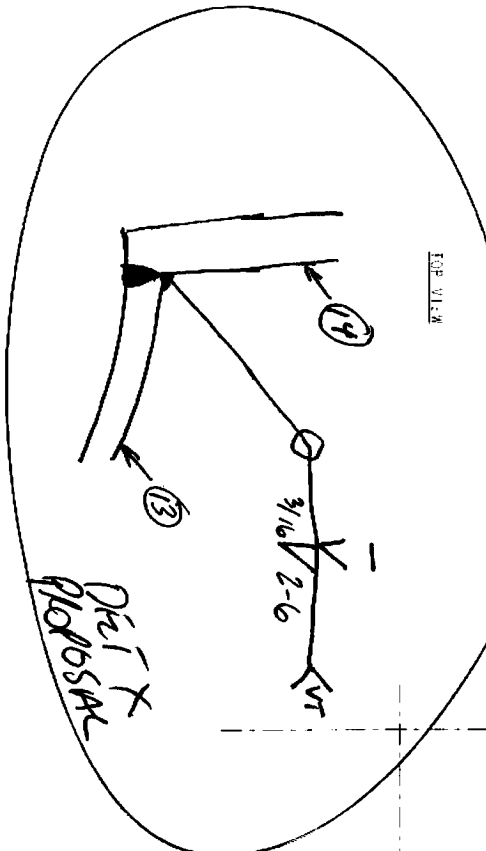
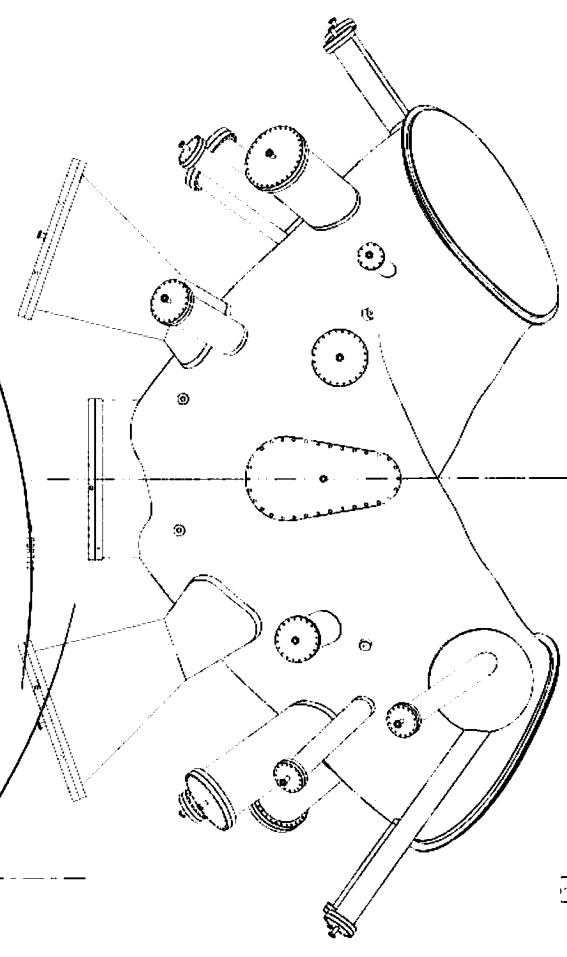
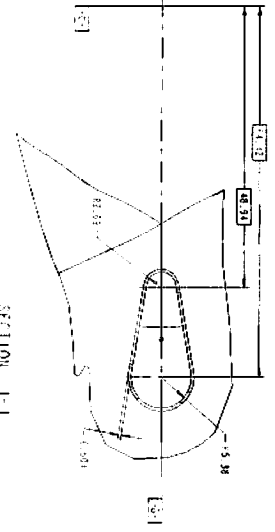
UT-BATTELLE	
4860 ROSS AVE, P.O. BOX 5327, BETHESDA, MD 20814	
NAT. BUREAU OF STANDARDS - GAITHERSBURG, MD 20899	
7810 101 VICTORY BLVD, FALLS CHURCH, VA 22046	
4850 W. CENTER ST., SUITE 103, FORT WORTH, TEXAS 76102	
DATE:	10/18/68
BY:	78101
CHKD BY:	8110
APP'D BY:	11120
UT-BATTELLE	

NB

8 7 6 5 4 3 2 1

FOR PARTS LIST AND NOTES, SEE SHEET 1

V P66LI
DETAILS

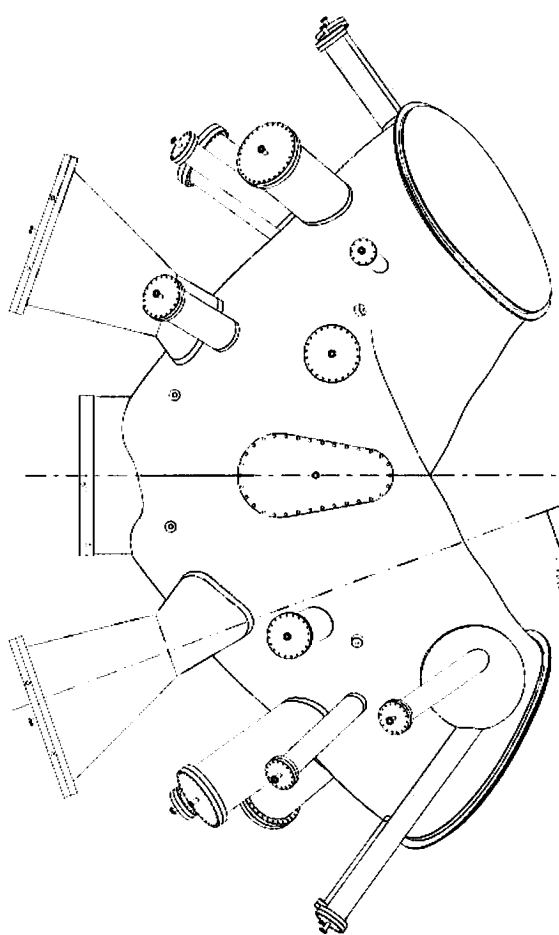


RELEASED FOR
FABRICATION / INSTALLATION
PPPL Drawing: Jerry Siegel

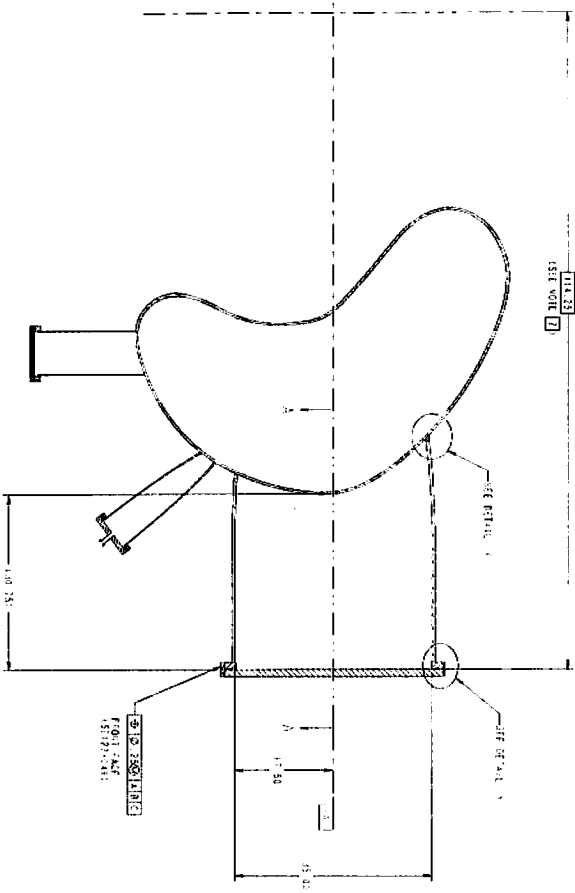
UN-BATTLE
MILWAUKEE COUNTY MILWAUKEE, WISCONSIN
VACUUM VESSEL
PERIOD INSPECTION AND LESS CHECK
ASSIGNMENT
5500 S 1319 A 10
SERIAL NO. 034
0

A B C D E F G H

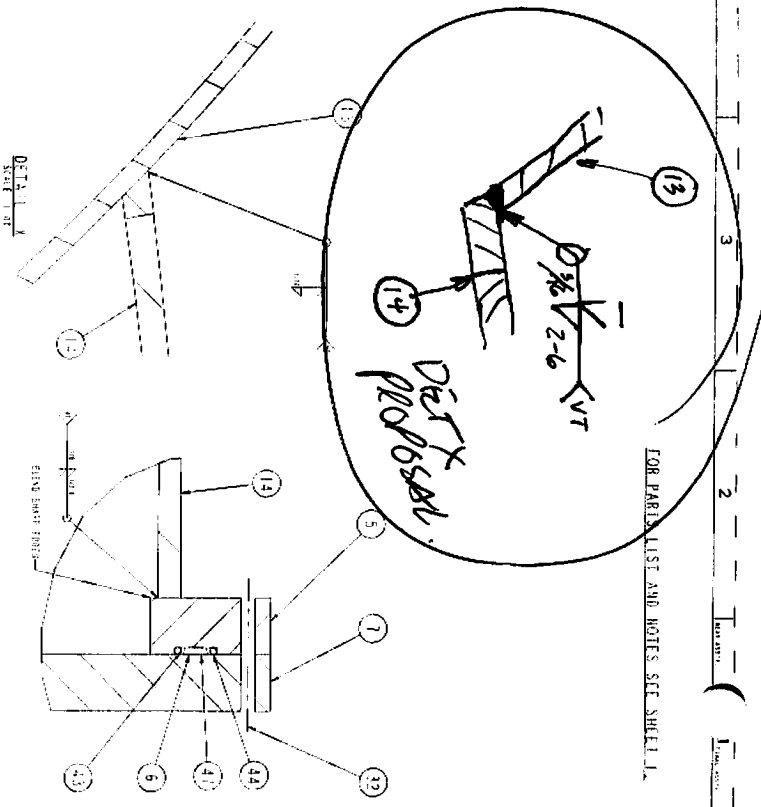
12-V



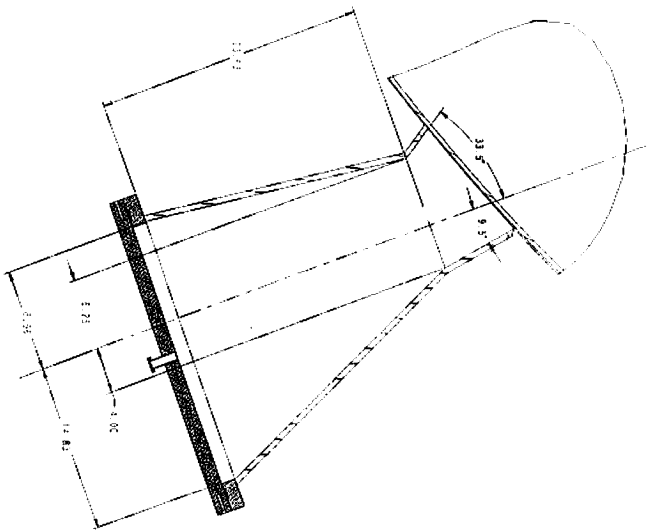
TOP VIEW



TYPICAL PORT AND AIR SECTION PORT AND AIR



DETAIL



SECTION A-A

*port #4
DETAILS*

FOR PARTIAL LIST AND NOTES SEE SHEET 1.

RELEASED FOR
FABRICATION/INSTALLATION
By: Jerry Siegel

LT-BATTLE	100-02115
NATIONAL COMPACT RESEARCH EXPERIMENT	
VACUUM VESSEL	
PERIOD INSPECTION AND LEAK CHECK	
ASSEMBLY	
INSPECTOR	DATE
JERRY SIEGEL	3 15 64
FOR APPROVAL	SH120-024